



Solis SOL-DLS-LAN Data Logger LAN Stick User Manual

[Home](#) » [solis](#) » Solis SOL-DLS-LAN Data Logger LAN Stick User Manual 



**SOL-DLS-LAN Data Logger LAN Stick
User Manual**



**Data Logger LAN Stick
Quick User Guide
DLS Version: 1.3**

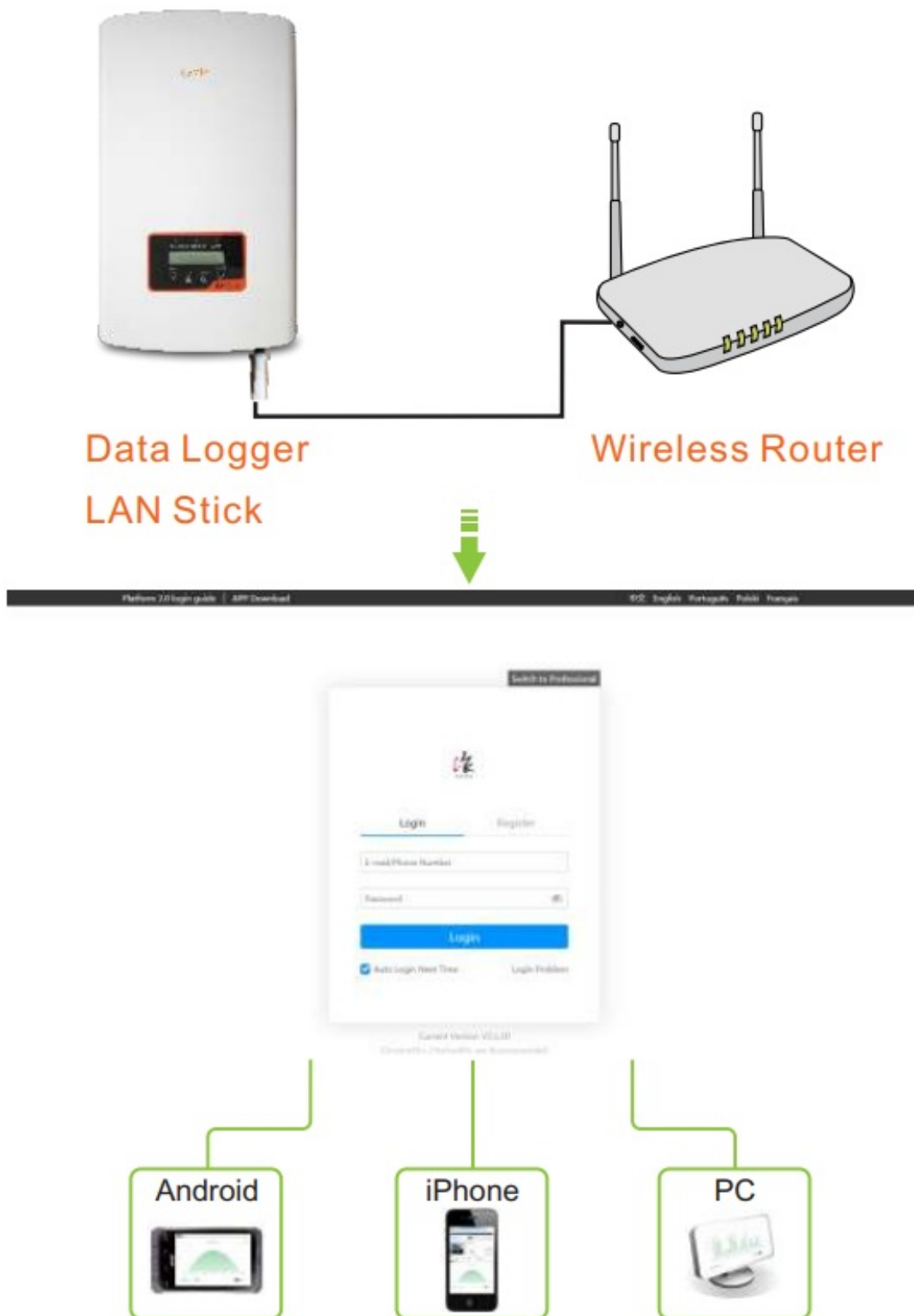
- 1 pc LAN Stick
- 1 pc Data Logger LAN Stick Quick User Guide

Contents

- [1 Introduction](#)
- [2 Electrical Connection](#)
- [3 LAN configuration](#)
- [4 Create Solis monitoring account](#)
- [5 Create plant](#)
- [6 Distrubutor/Installer create plant](#)
- [7 Link distributor/installer](#)
- [8 Documents / Resources](#)
- [9 Related Posts](#)

Introduction

Data Logger LAN Stick is mainly used in inverters to realize simple and quick access to Internet. Users can easily check device information by logging in the monitoring center. The communication topology is as shown below:



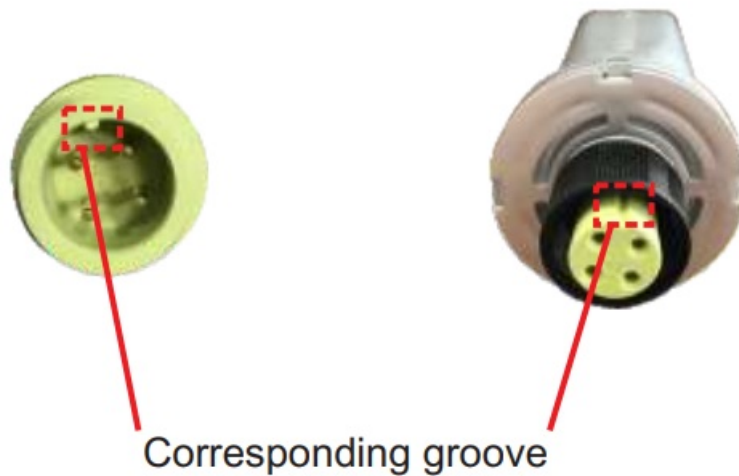
Description of Symbols

To ensure normal use of the datalogger, before using the datalogger, be sure that:

- The connected wireless router can normally access to Internet;
- The communication address of the inverter MUST BE " 01", which is default value.
- A computer is connected to this device for parameter setting.

Electrical Connection

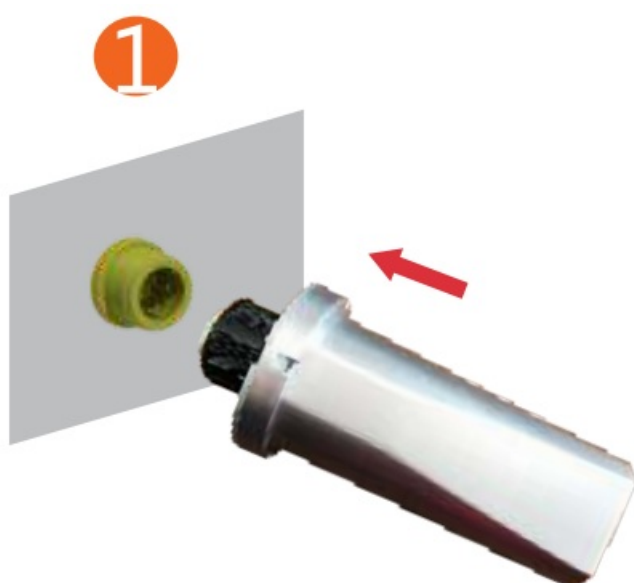
Connect LAN Stick to the corresponding interface on the inverter. Solis-1P5K-4G is used as an example in this manual. Please perform relevant operations as indicated below:



Data Logger LAN Stick Interface

Data Logger LAN Stick Installation

1. Insert LAN Stick to COM port.
2. Fasten the LAN Stick.



NOTES

LAN Stick automatically obtains IP by default.

If the network cable supports automatically obtains IP, please jump to "3" for APP registration.

If network cable do not support obtains IP automatically , please continue to follow “ 2 ” for IP settings.

LAN configuration

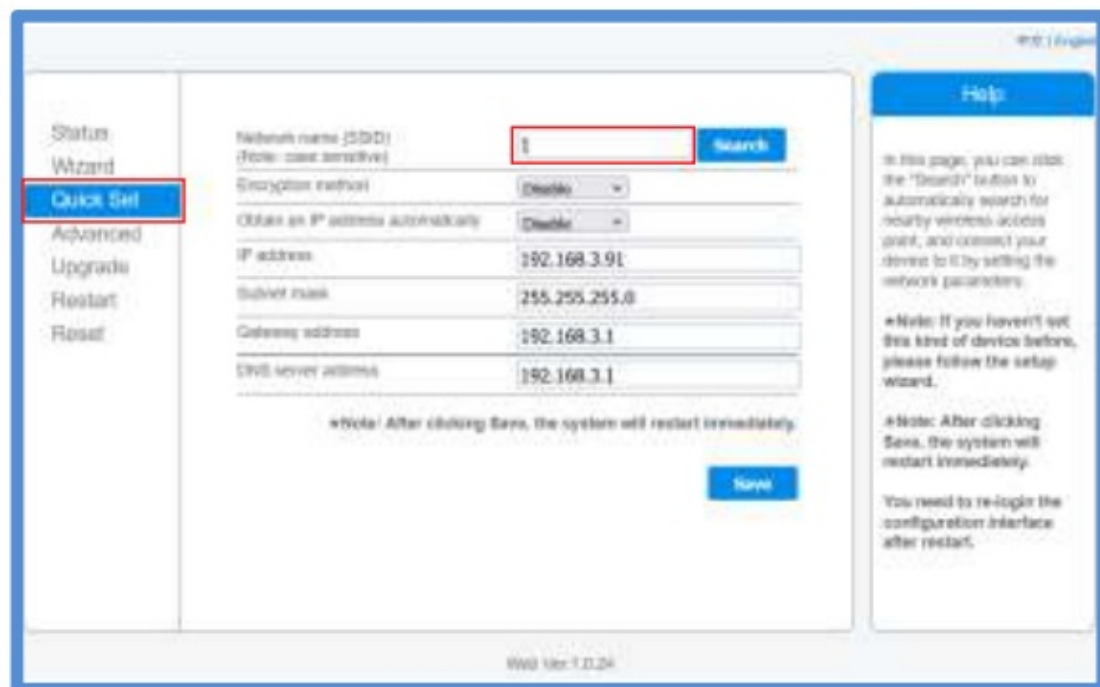
Step 1: Enter 169.254.173.207 in the web browser, open the following configuration interface. (If you can't open it, please skip to3) Enter username admin and password admin.



The image shows a web browser window with the address bar displaying 'http://169.254.173.207'. Below the address bar, a message states 'Your connection to this site is not private'. The main content area is titled 'Sign in' and contains two input fields: 'Username' with the text 'admin' and 'Password' with six asterisks. At the bottom right, there are two buttons: 'Sign in' (blue) and 'Cancel' (white with a blue border).

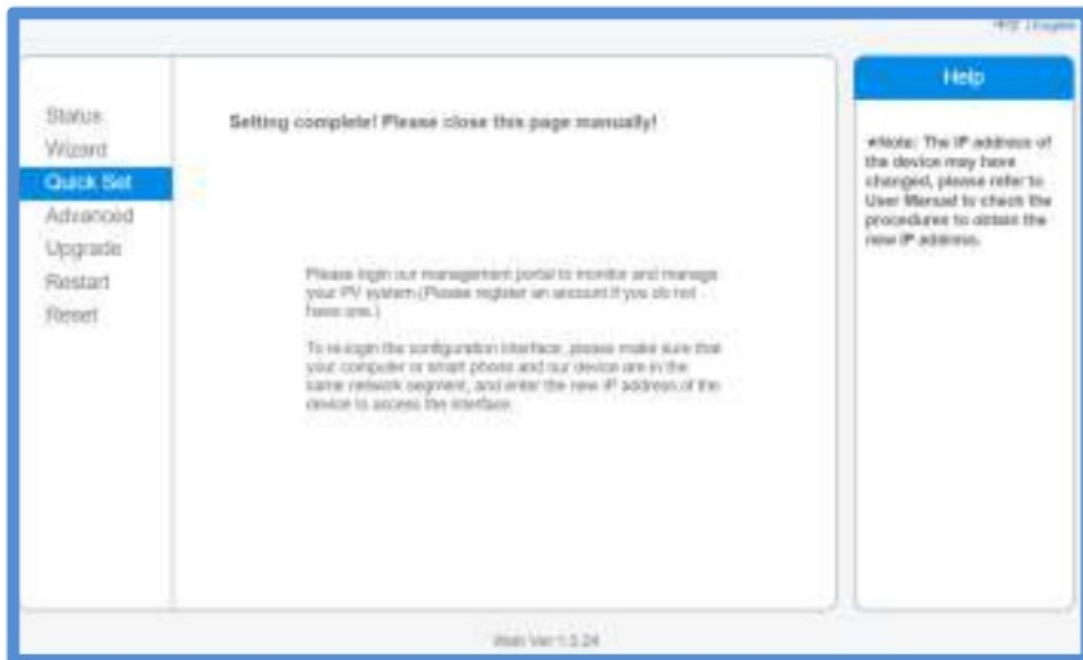
Step 2: Select the “ Quick Set ”.

Enter IP address Subnet mask Gateway address DNS server address for network cable. Then click the “ Save ” .
(Please enter in the “ 1 Network name ”, otherwise it cannot be saved)



The image shows a web interface for network configuration. On the left, there is a sidebar with a list of options: 'Status', 'Wizard', 'Quick Set' (highlighted with a red box), 'Advanced', 'Upgrade', 'Restart', and 'Reset'. The main area contains a form with the following fields: 'Network name (SSID)' (with a red box around the input field and a 'Search' button), 'Encryption method' (set to 'Disable'), 'Obtain an IP address automatically' (set to 'Disable'), 'IP address' (192.168.3.91), 'Subnet mask' (255.255.255.0), 'Gateway address' (192.168.3.1), and 'DNS server address' (192.168.3.1). Below the form, a note states: 'Note: After clicking Save, the system will restart immediately.' At the bottom right of the form is a 'Save' button. On the far right, there is a 'Help' section with text explaining the 'Search' button and providing notes about the system restart.

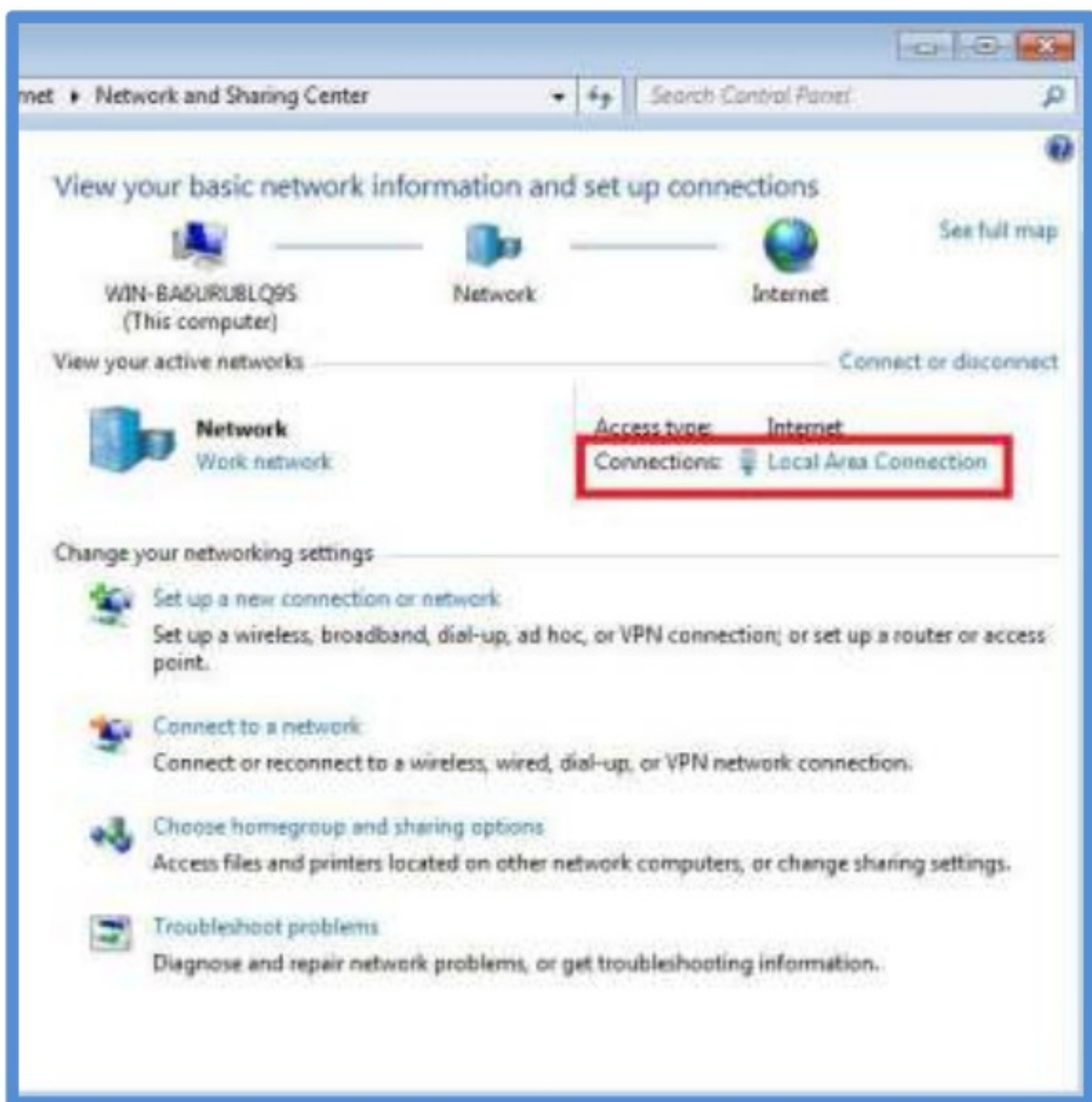
Step 3: The following interface pops up to indicate that the setting is successful, please skip to 4. Otherwise please try LAN configuration again .



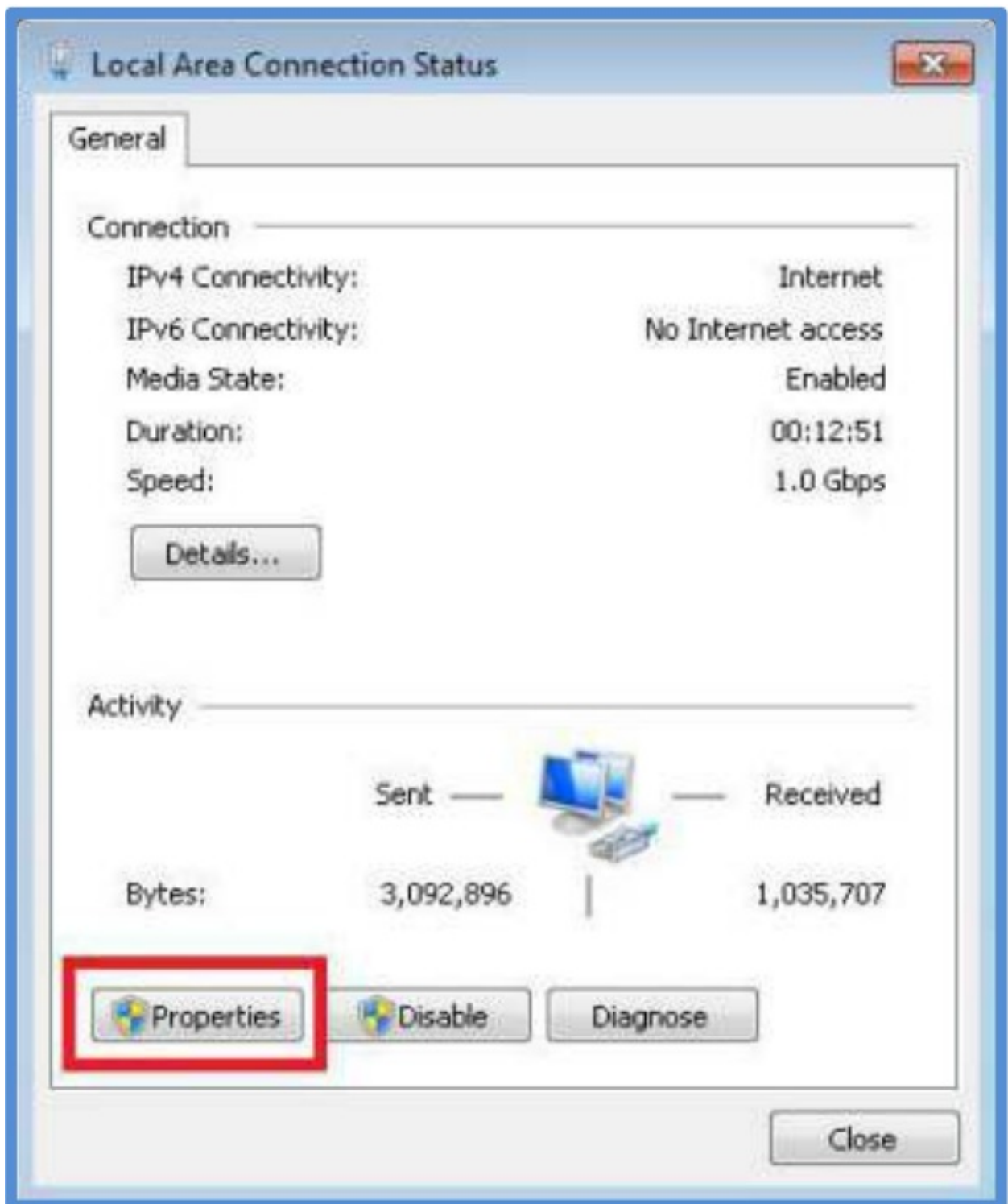
Step 1: With a network cable to connect the computer and LAN Stick, right-click the computer icon in the lower right corner of the computer, enter the network and sharing center.



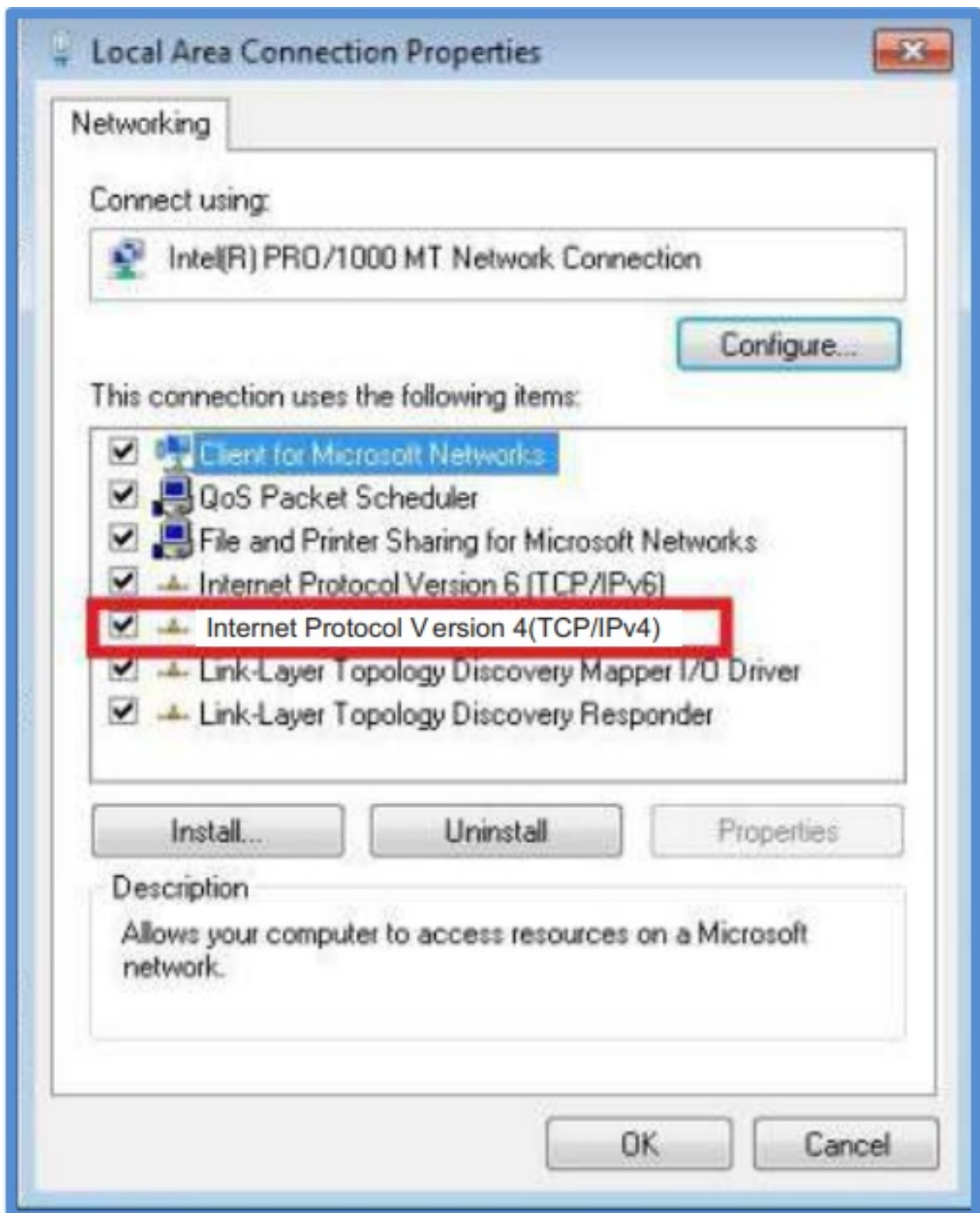
Step 2: Select the local connection options.



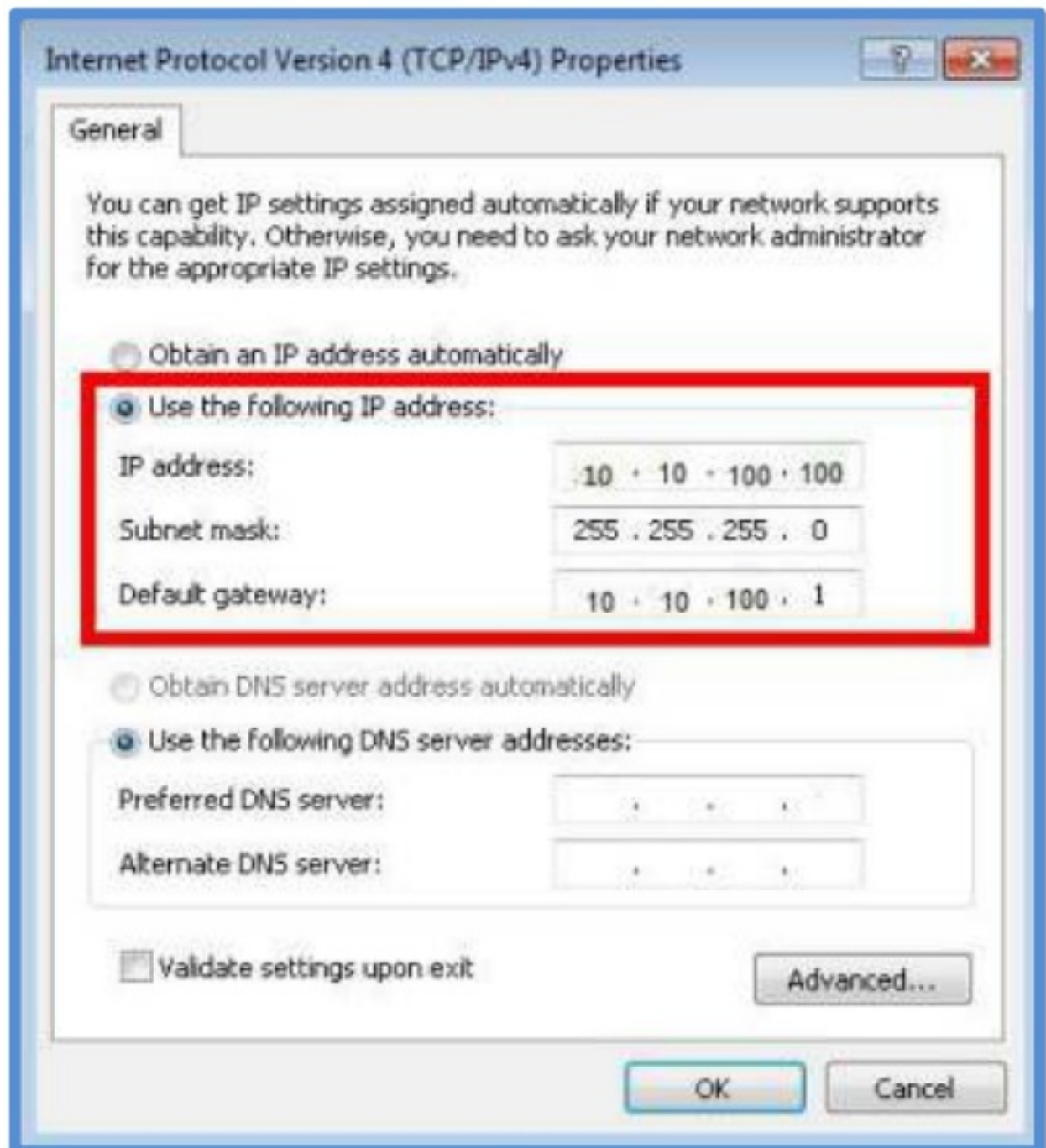
Step 3: Left double-click " Properties " into the " local connection status".



Step 4: Left double-click: "Internet Protocol version 4 (TCP / Ipv4) .



Step 5: While the computer's IP is configured as a static IP (as shown below) .



Step 6: Enter 10.10.100.254 in the web browser, open the following configuration interface. Select the " Network ".

System

Network

Manual

Restart

Reset

Upgrade

☐ Obtain IP address automatically
☒ Use the IP address below

IP address: 192.168.0.106

Subnet mask: 255.255.255.0

Default gateway: 192.168.0.1

☐ Obtain DNS address automatically
☒ Use the DNS address below

Preferred DNS server: 208.67.222.222

Optional DNS server: 208.67.222.222

Save

Ver.1.0.1

Step 7: Enter IP address Subnet mask Default gateway Preferred DNS server and Optional DNS server for network cable. Then click the “ Save ” and “ Restart ” to restart the LAN Stick.

System

Network

Manual

Restart

Reset

Upgrade

Saved successfully

Settings will be effective after restart the device.
 You should re-login the configuration page to continue other settings. It is recommended to restart after all settings are completed.
 Please click "restart" to restart now ; or click "Back" to continue the configuration.
 After completing all settings, you can click the "Restart" button in the left menu to restart .

Restart Back

Create Solis monitoring account

Step 1: Mobile phone scan the QR code to download the APP, or in the APP Store or Google Play search Solis Home or Solis Pro.



Solis Home
For End User

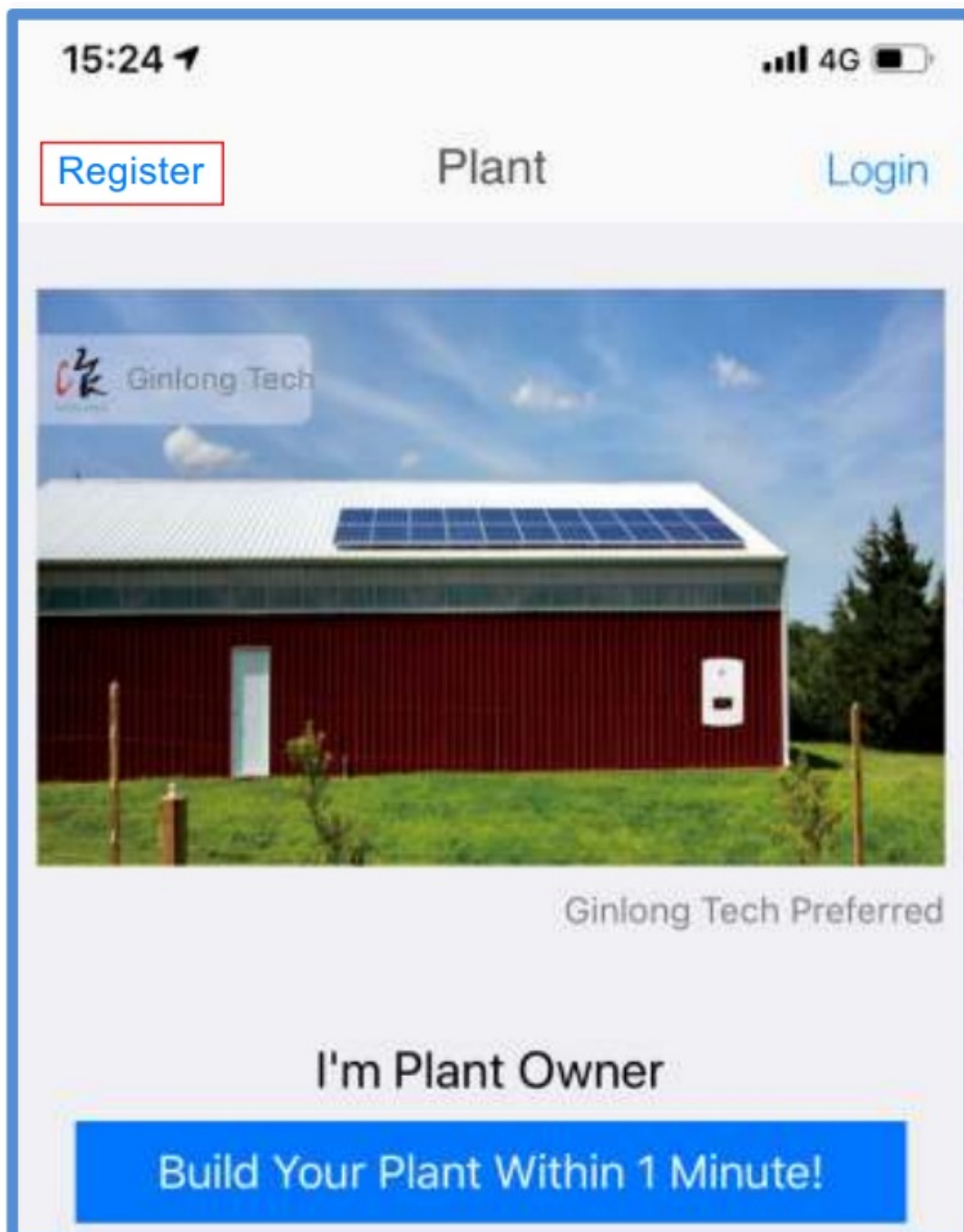
<http://www.ginlongmonitoring.com/GinLongHomeDownload/>



Solis Pro
For Distributer/Install

<http://www.ginlongmonitoring.com/GinLongProDownload/>

Step 2: Click on the “Register”.



Step 3: Fill in the form as required and click the “ Register ”.

15:25 4G

X Register

Username

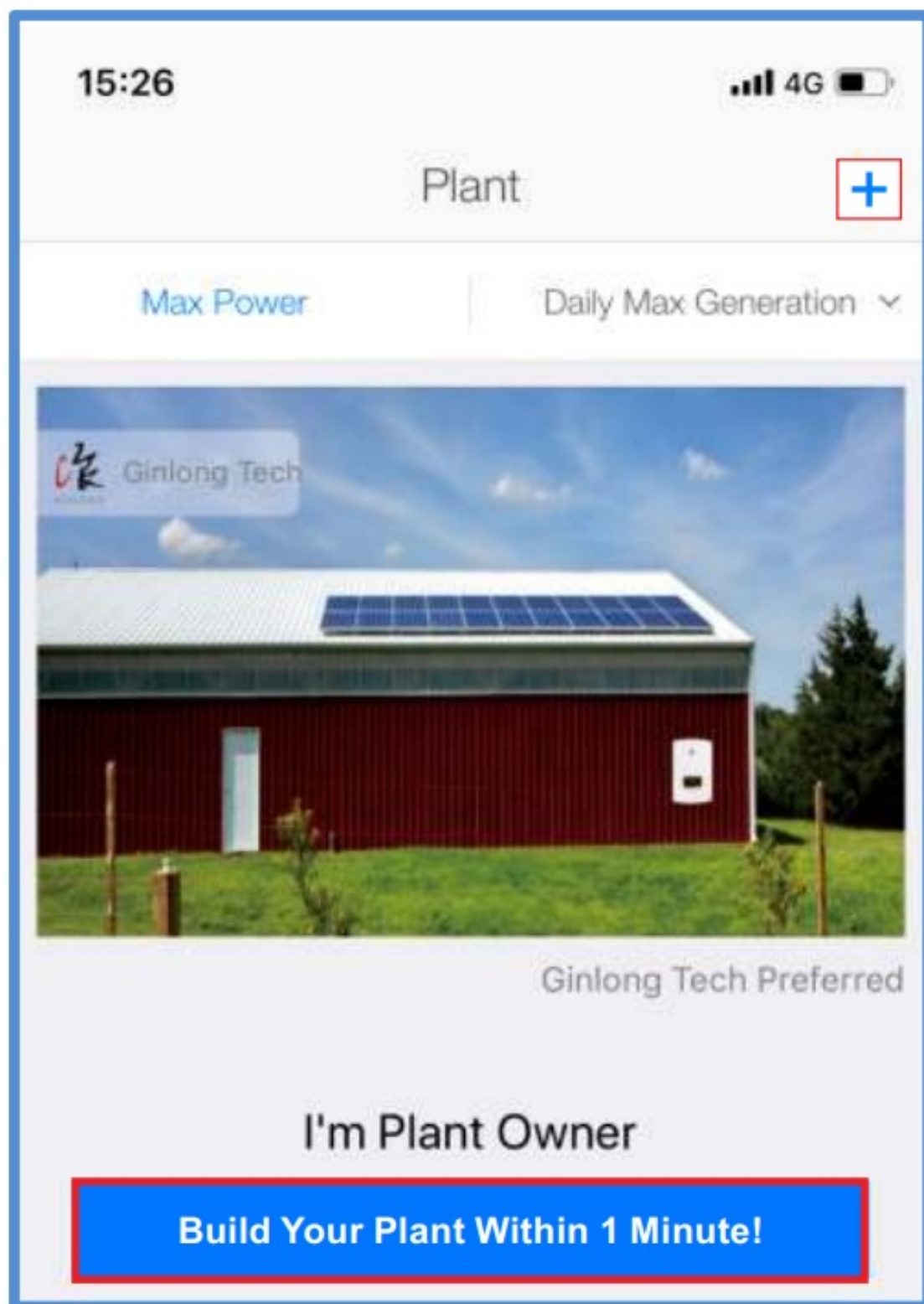
Email or Phone Number

Password(min 6 characters)

Register

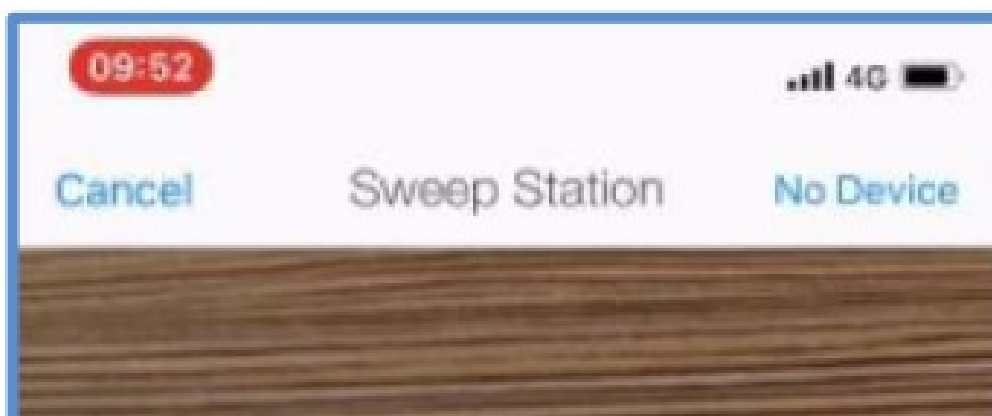
Create plant

Step 1 In the APP homepage and click “Build Your Plant Within 1 Minute!” in the middle of the screen. Or click the “+ ” in the upper right corner.



Step 2: Enter the SN of the datalogger.

The datalogger SN can be automatically scanned by placing the purchased device bar code in the scan box. If you can't scan, you can also manually enter the datalogger SN (just enter the digital serial number).





Note: Please scan the SN number on the datalogger, not the SN number on the inverter.



Step 3 :Enter the plant information.Then click the " Next ".

15:29

4G

←

Confirm Plant Info

Next

Plant Location

Longitude 121°54'57"

Latitude 29°22'58"

Locate

Map

Plant Address

Plant Type

Resi Roof

Industrial

Commercial

Utility

Grid Type

Partly On-grid

Distributed All Power on Grid

Storage System

Capacity(kWp) 5

Currency CNY >

Step 4 : Enter the plant name and contact information of the plant owner . Then click the “ Done”.

15:30 4G


Back Enter the plant name Done

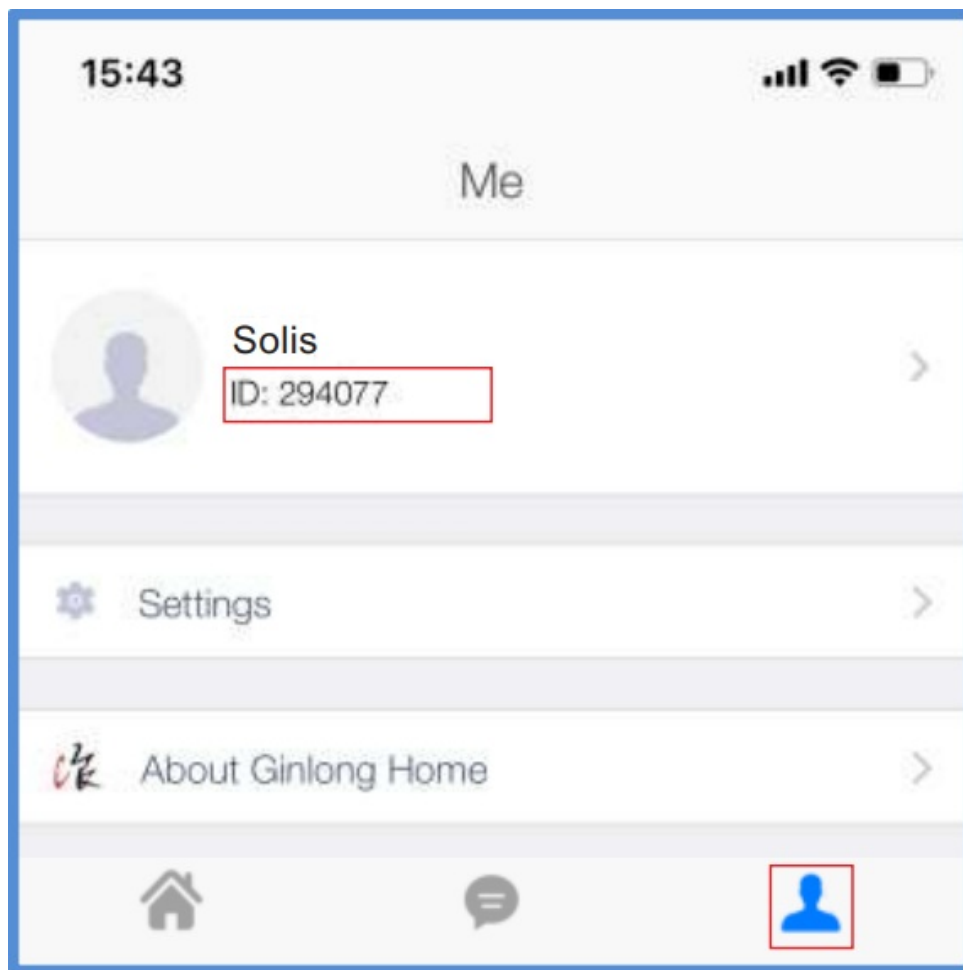
Plant Name

Phone number (Easy to contact you)

Distrubutor/Installer create plant

In order to easy registration and easy manage, you can also let the distributor/installer register the plant, then Link it to you .

Click the [] and tell the “ ” to your ID Distrubutor/installer to build the plant for you.
(Note: your Distrubutor/installer must have a Solis Pro account)



Link distributor/installer

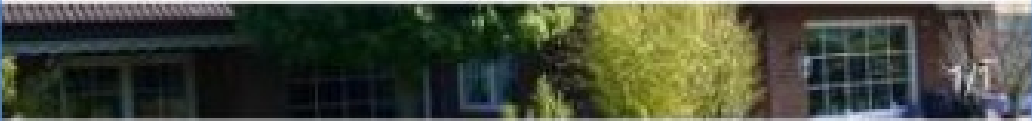
Step 1: In order to easy manage to your plant.
Select the plant and enter Intro . Click the " installer " or " distributor " .

15:43

←

Solis

...



Intro

Summary

Device

Plant basic information

Plant Name

Solis >

Telephone

>

Plant Address

Jinlang New Energy Technol... >

Timezone

UTC+08:00 >

Building Time

2019-02-27 15:36:06

Plant Info

Creator

锦浪

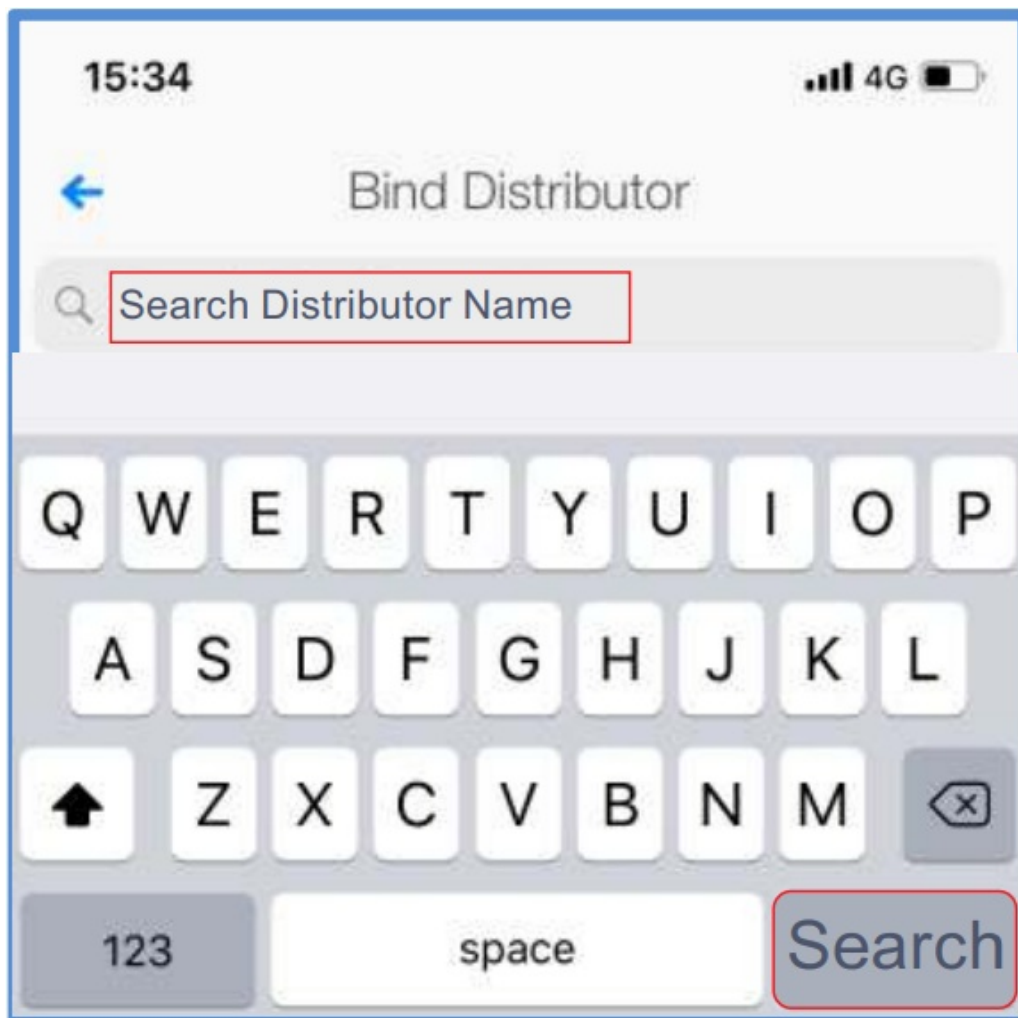
Installer

Disconnected Installer >

Distributor

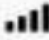


Disconnected Distributor >


Step 2: Enter the company name of the installer or distributor. Then click the “ Search ”.




Step 3: Click the [Bind Distributor/Installer] and the plant will appear in your installer/distributor monitoring interface.

(Note: your installer/distributor must have a Solis Pro account to appear in the search list)

15:44   

 Distributor Description



Company Name

company auto:49307-sustent...

Company Address

Company Type

Distributor

Bind Distributor

Contact

If you have any technical questions about our products, please contact us. Before contacting us, please confirm the following items:

Equipment model

Serial number of the datalogger

Problem description

Screenshot of the Status page in the configuration interface



Ginlong Technologies Co., Ltd.

No. 57 Jintong Road, Binhai Industrial Park,
Xiangshan, Ningbo, Zhejiang, 315712, P.R.China.

Tel: +86 (0)574 6578 1806

Fax: +86 (0)574 6578 1606

Email info@ginlong.com

Web www.ginlong.com

Documents / Resources



[Solis SOL-DLS-LAN Data Logger LAN Stick](#) [pdf] User Manual
SOL-DLS-LAN Data Logger LAN Stick, SOL-DLS-LAN, Data Logger LAN Stick, Logger LAN Stick, LAN Stick

Manuals+