

Solis S2 WiFi Data Logger



# Solis S2 WiFi Data Logger User Guide

[Home](#) » [solis](#) » Solis S2 WiFi Data Logger User Guide 

## Contents

- [1 Solis S2 WiFi Data Logger](#)
- [2 Specifications](#)
- [3 Product Usage Instructions](#)
- [4 FAQ](#)
- [5 WiFi Signal Strength](#)
- [6 Connection Method](#)
- [7 Resetting the Datalogger](#)
- [8 CONTACT](#)
- [9 Documents / Resources](#)
  - [9.1 References](#)



**Solis S2 WiFi Data Logger**



## Specifications

- **Product:** Solis WiFi Datalogger Stick
- **Models:** S2, S3, S4
- **WiFi Signal Strength Requirement:** Above Minimum Low Signal Zone
- **IP Address:** 10.10.100.254
- **Password:** 123456789

## Product Usage Instructions

### Setting Up the WiFi Datalogger Stick

1. Plug the WiFi stick into an inverter.
2. Find the wireless AP on a WiFi-enabled device.
3. Log on to wireless AP using password 123456789.
4. In an internet browser, browse to 10.10.100.254.
5. Login to the web interface with u: admin and p: 123456789.
6. Select the Quick Set option in the menu.
7. Search for the WiFi in range.
8. Select the correct WiFi AP from the list and add the password details.
9. Select the Save option and the datalogger should restart and connect.

### Connection Method

1. Find the AP with Solis\_xxxxxxxxx and connect with password: 123456789 on a WiFi-enabled device.
2. Open an Internet Browser and browse to IP address 10.10.100.254. Login with u: admin | p: 123456789.
3. Select the Quick Set link once logged in.
4. Select the Search option under WiFi settings.
5. Select the WiFi network to use and click OK.

6. Enter the WiFi password and save. The logger will restart and connect to the access point.

## FAQ

- **Q:** What should I do if my WiFi signal strength is below the minimum required?
- **A:** If the signal strength is low, consider installing a WiFi extender or using a LAN cable from the router to the logger if supported.
- **Q:** What issues may occur if using the system with low signal strength?
- **A:** Inconsistent and slow system updates to Solis Cloud.
  - System firmware updates will fail continuously.
  - Remote control of system settings will not be possible.

## Overview

The SOP document shows a step-by-step guide to setting up the latest Solis WiFi datalogger sticks. The note applies to the S2, S3, and S4 models of the datalogger sticks. NB. It is very important to ensure the WiFi signal strength is good, see the WiFi Signal Strength section below.

## Quick Steps

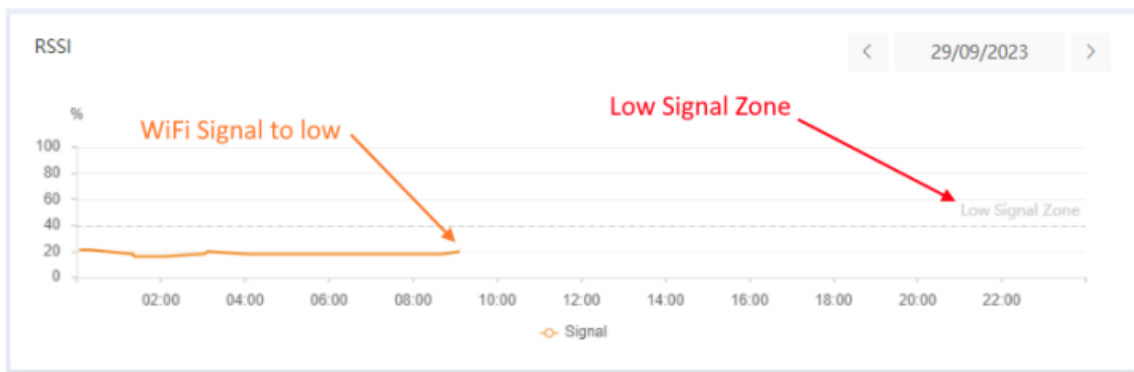
1. Plug the WiFi stick into an inverter.
2. Find the wireless AP on a WiFi-enabled device.
3. Login to wireless AP using password 123456789
4. In an internet browser, browse to 10.10.100.254
5. Login to the web interface with u: admin and p: 123456789
6. Select the Quick Set option in the menu
7. Search for the WiFi in range
8. Select the correct WiFi AP from the list and add the password details.
9. Select the Save option and the datalogger should restart and connect

## WiFi Signal Strength

It is very important to ensure that the WiFi signal strength is above the minimum “Low Signal Zone” as per the below image. Using the system with a signal strength below this low zone will not work correctly and will cause the following issues.

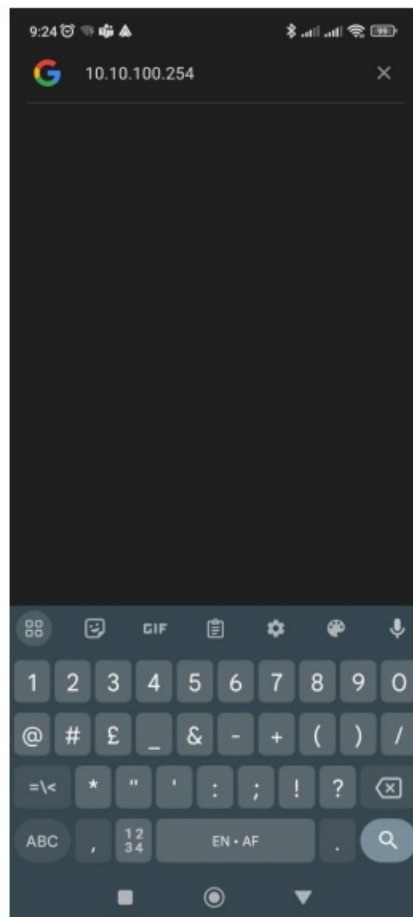
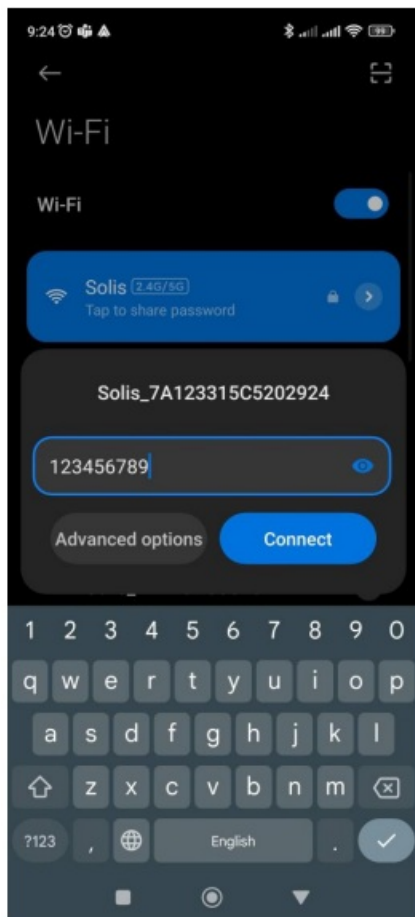
1. Inconsistent and slow system updates to Solis Cloud.
2. System firmware updates will not be possible and continuously fail.
3. Remote control of the system settings will not be possible and also fail.

If the signal is too low it may be required to install a WiFi extender or LAN cable from the router to the logger if this is supported.

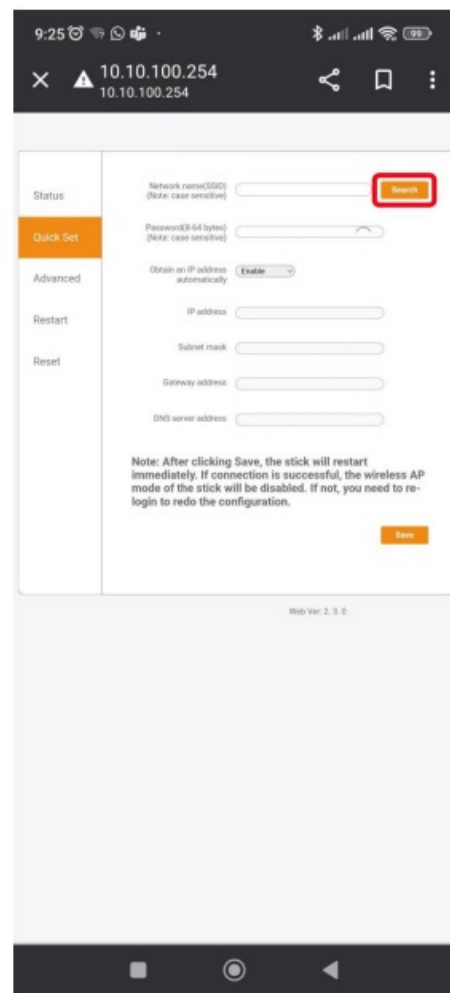
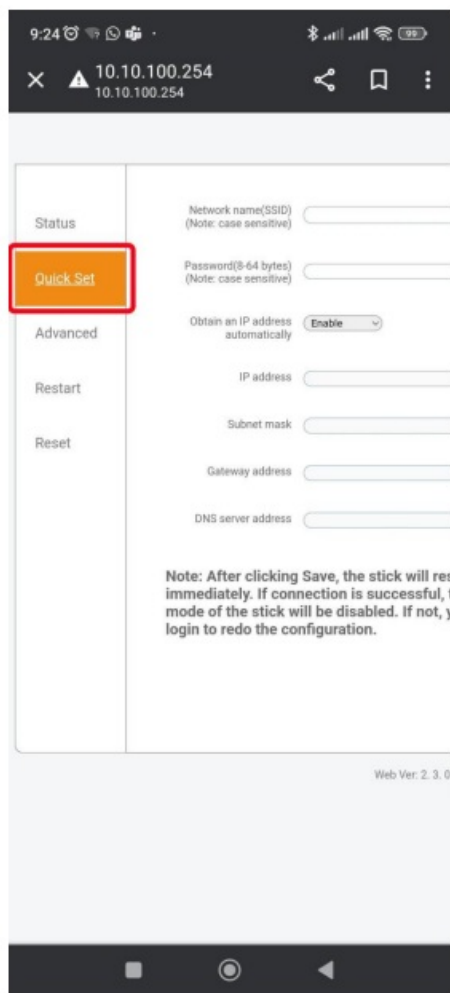


## Connection Method

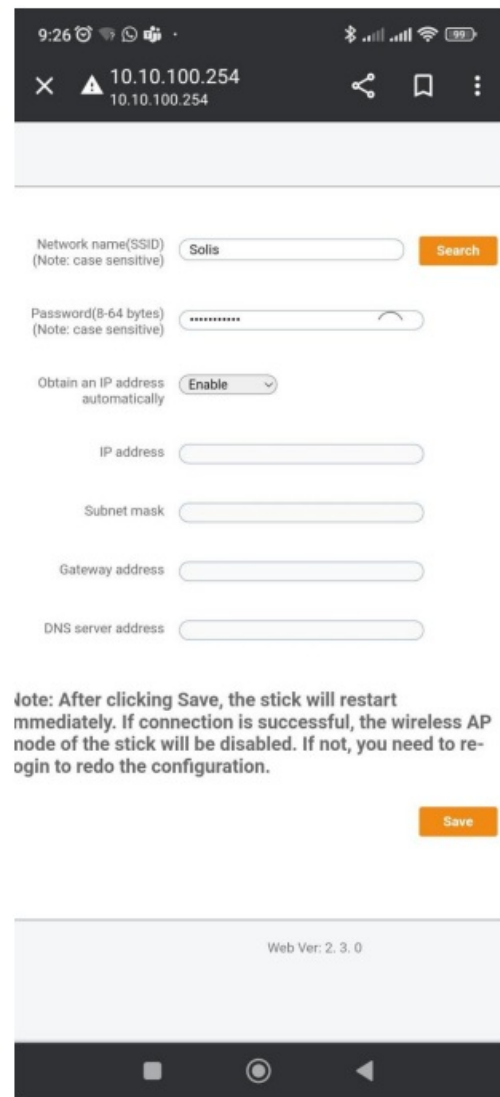
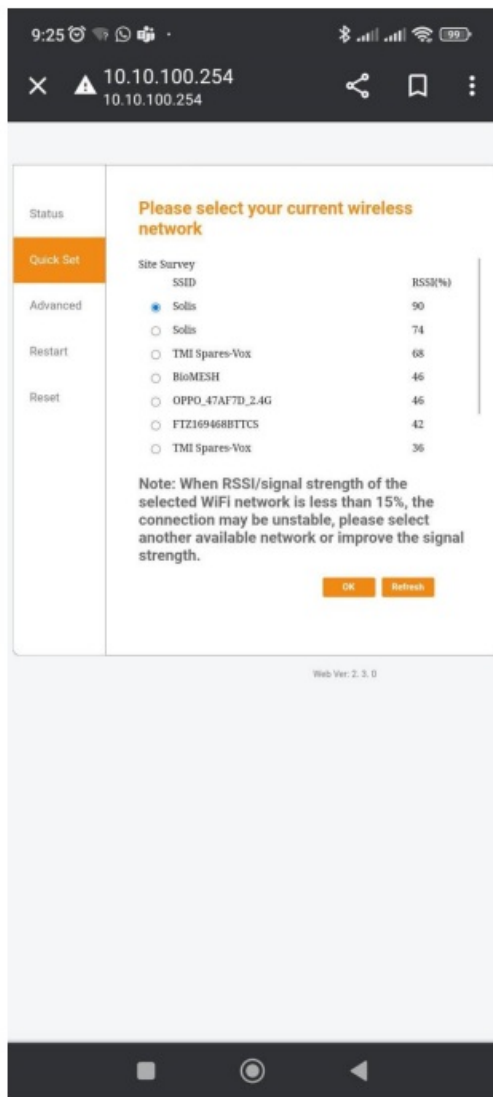
- **Step 1:** On a WiFi-enabled device find the AP with Solis\_xxxxxxxxx and connect with the password: 123456789
- **Step 2:** Open an Internet Browser and browse to IP address 10.10.100.254. At the web interface login screen use u: admin | p: 123456789



- **Step 3:** Once logged in to the web interface, select the Quick Set link
- **Step 4:** The below screen for WiFi will open and select the Search option.



- **Step 5:** Select the WiFi to use for the data connection and select the OK button.
- **Step 6:** Once the correct WiFi is selected enter the password for WiFi and select the Save option. Once the process is complete the logger will restart and connect to the access point.



## Resetting the Datalogger

### Reset Procedure




Once a WiFi connection has been established with the logger the AP gets hidden and you will no longer be able to log on to the logger stick again. In this case, you will need to reset the logger to be able to reconfigure it. All the latest versions of the WiFi data loggers have an external “Reset” button. To reset the logger, hold the “Reset” button for at least 10 seconds until all the LEDs go off and only the Power LED is illuminated. The data logger has now been successfully reset. You should be able to search for the Solis\_xxxxxx AP and log on again following Step 1 to reconfigure.

## CONTACT

- w: [solisinverters.com](http://solisinverters.com)
- [saservice@solisinverters.com](mailto:saservice@solisinverters.com)

## Documents / Resources

	<p><a href="#">Solis S2 WiFi Data Logger</a> [pdf] User Guide S2, S3, S4, S2 WiFi Data Logger, S2, WiFi Data Logger, Data Logger, Logger</p>
---	--

## References

- [User Manual](#)

### Manuals+ Privacy Policy

This website is an independent publication and is neither affiliated with nor endorsed by any of the trademark owners. The "Bluetooth®" word mark and logos are registered trademarks owned by Bluetooth SIG, Inc. The "Wi-Fi®" word mark and logos are registered trademarks owned by the Wi-Fi Alliance. Any use of these marks on this website does not imply any affiliation with or endorsement.