



Solinst 4001 Readout Unit User Guide

[Home](#) » [Solinst](#) » Solinst 4001 Readout Unit User Guide 

Contents

- 1 4001 Readout Unit
 - 1.1 Connect SRU to Datalogger
 - 1.2 SRU On/Off and Navigation
 - 1.3 SRU Menu Options
 - 1.4 Transferring Data to a PC
- 2 Documents / Resources
- 3 Related Posts

4001 Readout Unit

SRU (Solinst Readout Unit) Quick Start Guide
More Info | Instructions | Get Quote
Connect SRU to Datalogger
Model 4001



USB-C Connection for PC Communication LCD Screen
Menu Push-Buttons
Rugged Rubber
Outer Cover
Serial Number

Internal Barometric

Pressure Sensor Interface



Connect SRU to Datalogger

The SRU cable connects to a Levellogger's Direct Read Cable, LevelVent Wellhead or AquaVent Wellhead Connector Cable.

An L5 Threaded or Slip Fit Adaptor can also be used to connect the SRU cable to a Levellogger.

SRU On/Off and Navigation

Press and hold any button to turn the SRU on. The SRU has an auto-off after 2 minutes of inactivity.



Use the up/down arrows to scroll through menu items.

Use the left/right arrows to select the menu actions shown at the bottom left/right of the LCD (e.g. Next, Back, etc.)

SRU Menu Options

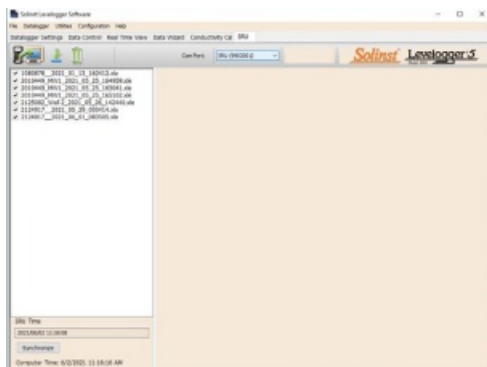
There are three main menu items for the SRU: Take a Reading: allows you to display an instant reading from the connected datalogger, turn on/off barometric

Transferring Data to a PC

Download the latest version of Levellogger Software from:

<https://www.solinst.com/downloads/>

Connect the SRU to the PC using a USB Cable. The SRU will automatically turn on and the LCD screen will show a message indicating the SRU is connected to the PC.



compensation, and start and save a real-time logging session. Download/View Files: allows you to download and save the data from the connected datalogger's current internal

logging session, and view all data files saved in the SRU. Status/Setup: allows you to view information about the SRU and connected datalogger, including battery level, memory, serial number, logging status and firmware version. You can also adjust the contrast of the LCD screen.



1. Start the Levellogger Software and open the SRU tab.
2. Select the appropriate Com Port for the connected SRU from the centre drop-down menu.
3. Click the 'Retrieve SRU Settings' icon. A window will open prompting you to select the location to save the data files.
4. Select the file(s) from the list that you want to download and click the 'Download Data' icon.
5. Data files can be viewed in the Data Control tab by selecting "Finish and Open all", or select "Finish" if you do not need to view the data right away – data can be viewed later by going to the Data Control tab and selecting the 'Open Files' icon.
6. All data files saved in the SRU can be erased by clicking the 'Erase Files' icon.

(Page 1 of 2) High Quality Groundwater and Surface Water Monitoring Instrumentation

Idle 99%

Take a Reading

Download/View Files

Idle 99%

Level (Comp): 10.045m Temperature: 28.234°C

Idle 99%

Turn Compensation:

On

Idle 99%

Sample Rate: 12 mins

Log 56 99%

Level (Comp): 10.045m Temperature: 28.234°C

Log 57 99%

Barometrically Compensated

Status/Setup

Conductivity: 125.4μS

Baro Reading: 98.89kPa

Compensation: On

Conductivity: 125.4μS

Data Saved

Next

Back Next

Back

Next

Off

Back Start

Idle 99%

Sample Rate: 12 mins Compensation: Off

Back Start

Stop Save

Log 56 99%

Level (Uncomp): 10.045m Temperature: 28.234°C Conductivity: 125.4μS

Stop Save

Home

Log 57 99%

Uncompensated Data Saved

Home

Idle 99% Idle 99%

Downloading 99% Download 99%

Take a Reading

Download/View Files Status/Setup

Next

Download Logger

View Files

Back Next

Downloading Logs: Cancel

55%

Logger Data

Saved to file

1081225-01.10.21-12.30.xle Home

Idle

Download Logger View Files

99%

3/11 Files 99%

1081225-01.10.21-12.30 D 1081225-01.15.21-15.56 C 1081225-01.16.21-22.50 U

Idle Status: indicates whether the SRU is idle, logging, or downloading/ viewing data logs.

Battery icon: represents the battery life remaining for the SRU.

Idle 99%

Take a Reading

Download/View Files Status/Setup

Next

Back Next

Idle 99%

SRU Status

Logger Status

LCD Contrast

Back Next

Home Next 3

Idle 99%

SRU Serial: 123456 SRU Memory: 50% Firmware: V1.000 Back

D = Downloaded Data File

C = Compensated Real-Time Data File

U = Uncompensated Real-Time Data File

Note: Real-time logging, saving, or downloading data will not stop/interrupt the datalogger from logging internally. The datalogger memory will not be erased.

Idle 99%

SRU Status

Logger Status

LCD Contrast

Idle 99%

Logger Serial: 1081234 Logger Memory: 50% Logger Battery: 85%

Idle 99%

Log Mode: Schedule Logging Rate: 15 secs Logger Status: Started

Idle 99%

Location: Wellhead 234 Name: Zanzibar 1 Firmware: V1.004

Back Next

Idle 99%

SRU Status

Logger Status

LCD Contrast

Back Next

Back Next

Idle 99%

Set LCD

Contrast: 55% Back Home


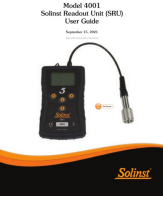
Back Next

Back Home

Solinst Canada Ltd. 35 Todd Road, Georgetown, Ontario Canada L7G 4R8 www.solinst.com E-mail: instruments@solinst.com Tel: +1 (905) 873-2255; (800) 661-2023 Fax: +1 (905) 873-1992 September 15, 2021

(#115926) (Page 2 of 2)

Documents / Resources

	<p>Solinst 4001 Readout Unit [pdf] User Guide 4001, Readout Unit</p>
	<p>Solinst 4001 Readout Unit [pdf] User Guide 4001, Readout Unit</p>