



Solight PP127 Built-in Power Socket with a Cable Instructions

[Home](#) » [Solight](#) » Solight PP127 Built-in Power Socket with a Cable Instructions 

Solight PP127 built-in power socket with a cable



Contents

- [1 Installation](#)
- [2 Mains supply](#)
- [3 USB charging output](#)
- [4 Documents / Resources](#)
- [5 Related Posts](#)

Installation

- a. specify the position on the table where you want to insert the socket module. Installation is not recommended too close to the edges to ensure board strength and load. If it is a chipboard table, wrap the area around the position with insulating tape. For a successful installation, there must be at least 80mm of space under the table or board.
- b. mark a round hole with a diameter of 60mm. Drill a hole using the most suitable tools, such as a jigsaw. Max. diameter created should not exceed 62-63mm.
- c. Insert the socket module and adjust the bottom nut. Adjust the desired height and tighten. It is best to seal the top cover before liquids leakage with a transparent silicone sealant.
- d. finally, plug the device power cable into an electrical outlet.

Mains supply

- a. 1 socket 230V AC, current load, and total power consumption max. 16A / max. 3680W.
- b. pop-up center as a power switch. The socket is disconnected from the electrical circuit until the movable center

is pushed into the perimeter cover. The power cord remains plugged in, the connected contacts are latched. Pressing the center again releases the latch and slides the moving center toward the socket-outlet surface. The electrical circuit is disconnected, the socket is switched off, the power cord remains plugged in. Maximum safety and protection increased with the safety shutters.

c. power cable type H05VV-F 3G 1.5mm², length 1.5m.

USB charging output

a. 1x Type-A – fast charging, max. charging current DC 5.0V-3.0A, 9.0V-2.0A, 12.0V-1.5A, max. 18.0W.

b. the charging time corresponds to the capacity and the state of charge of the battery of the connected device.

Do not dismantle the product or change the connection, do not exceed the permissible load, clean disconnected from the mains, allow to dry thoroughly.

Solight Holding s.r.o. in no event shall be liable for property damage or personal injury caused by the improper connection or improper use.

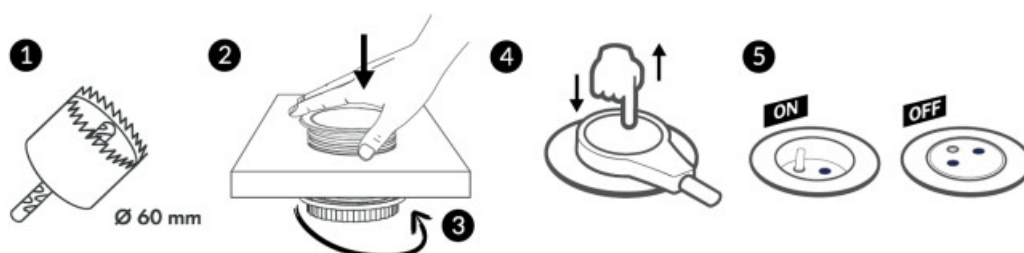
16A/250V~

Max.3680W 230V~

Input: 230V~ 50Hz

Output: USB Type-C: DC 5.0V/3.0A, 12.0V-1.5A, max. 18.0W

Working temp.: 0°C (32°F) 35°C (95°F)



Manufacturer: Solight Holding, s.r.o., Na Brn 1972, Hradec Králové 500 06,

USB charging efficiency

Average active efficiency

Efficiency at low load (10%)

No-load power consumption

Documents / Resources

