



SOLIGHT PP125USBC Pop-up Power Socket with Cable Instructions

[Home](#) » [Solight](#) » SOLIGHT PP125USBC Pop-up Power Socket with Cable Instructions 



Contents

- [1 PP125USBC Pop-up Power Socket with Cable](#)
- [2 Documents / Resources](#)
- [3 Related Posts](#)

PP125USBC Pop-up Power Socket with Cable

Solight pop-up power socket with a cable PP125USBC, PP125USBC-B

1. Installation

- a. specify the position on the table where you want to insert the socket module. Installation is not recommended too close to the edges to ensure board strength and load. If it is a chipboard table, wrap the area around the position with insulating tape. For a successful installation, there must be at least 250mm of space under the table or board
- b. mark a round hole with a diameter of 60mm. Drill a hole using the most suitable tools, such as a jigsaw. Max. diameter created should not exceed 62-63mm.
- c. Insert the socket module and adjust the bottom nut. Adjust the desired height and tighten. It is best to seal the top cover before liquids leak with a transparent silicone sealant.
- d. finally, plug the device's power cable into an electrical outlet.

2. Mains supply

- a. 3 sockets 230V AC, current load and total power consumption max. 10A / max. 2300W.
- b. power cable type H05VV-F 3G 1.0mm², length 2m (visible 1.9m).

3. USB charging outputs

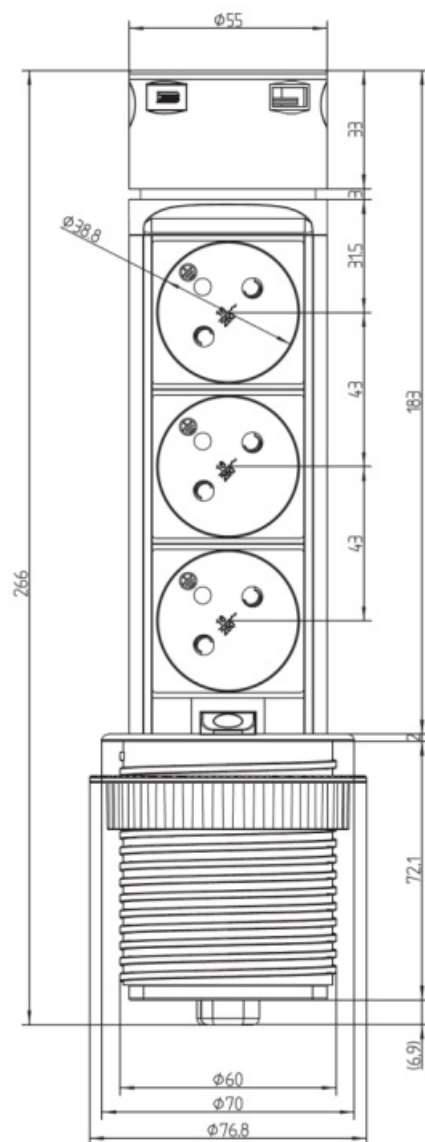
- a. 1x Type-C + 1x Type-A, DC 5.0V / 2.4A, max. 12.0W
- b. when two devices are connected to both USB ports (Type-A and Type-C) at the same time, the intelligent circuit detects their batteries, adjusts the charging current, and changes the charging speed depending on their capacity and state of charge. The maximum charging current is determined by the type of USB port, max. 2.4A in total.
- c. the charging time corresponds to the capacity and the state of charge of the battery of the connected device.

4. Usage

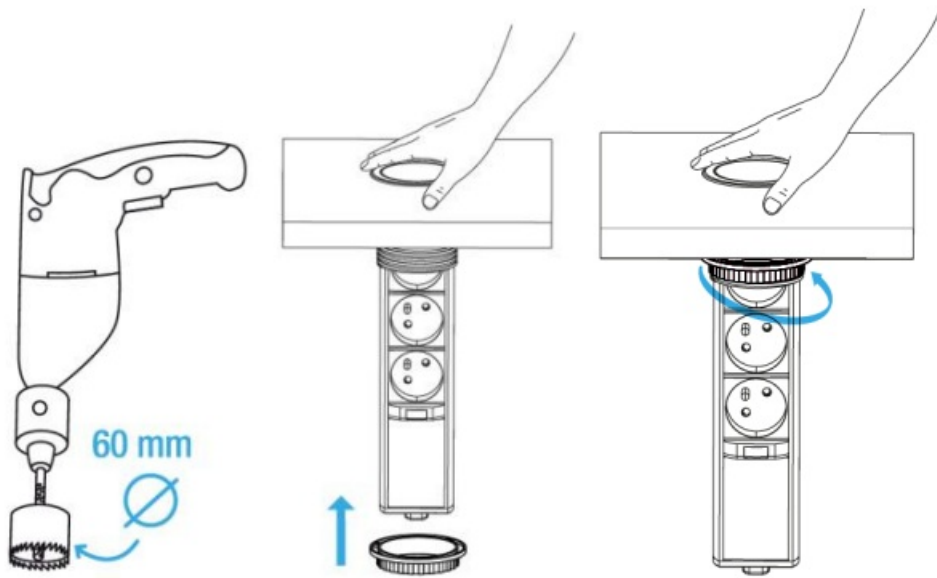
- a. press the top of the socket block cover to eject the USB charging adapter.
- b. pull out the ejected part of the USB adapter to eject the entire block until it engages with the automatic latch.
- c. to hide the socket block, hold the USB adapter with one hand and press the latch button with the second hand. The block is able to move down now. Be careful with this operation.

5. Do not dismantle the product or change the connection, do not exceed the permissible load, clean disconnected from the mains, and allow to dry thoroughly.

6. Solight Holding s.r.o. in no event shall be liable for property damage or personal injury caused by the improper connection or improper use.



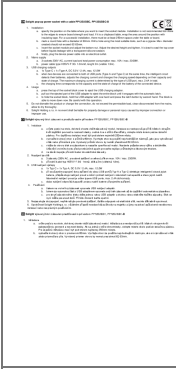
Input:	max. 16A / 250V~ ,50-60Hz
Output:	max. 2300W / 230V~ (max. 10A) USB 1x Type-C + 1x Type-A, DC 5.0V / 2,4A, max. 12.0W
Working temp.	0°C (32°F) – 35°C (95°F)
Manufacturer:	Solight Holding, s.r.o., Na Brně 1972, Hradec Králové 500 06, Česká republika



USB charging efficiency	
Average active efficiency	80.78%
Efficiency at low load (10%)	79.94%
No-load power consumption	0.06W

SOLIGHT

Documents / Resources

	<p>SOLIGHT PP125USBC Pop-up Power Socket with Cable [pdf] Instructions</p> <p>PP125USBC, PP125USBC-B, Pop-up Power Socket with Cable, Pop-up Power Socket, Power Socket, PP125USBC, Socket</p>
--	---