



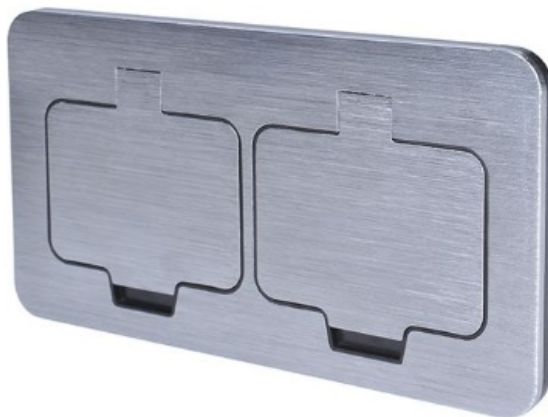
## SOLIGHT IP55 Floor Double Socket Instruction Manual

[Home](#) » [Solight](#) » SOLIGHT IP55 Floor Double Socket Instruction Manual 

### Contents

- [1 SOLIGHT IP55 Floor Double Socket Instruction Manual](#)
- [2 Instruction for assembly](#)
- [3 Read More About This Manual & Download PDF:](#)
- [4 Documents / Resources](#)
  - [4.1 References](#)

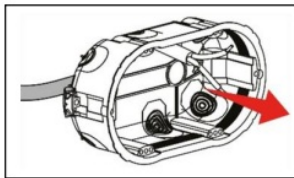
### SOLIGHT IP55 Floor Double Socket Instruction Manual



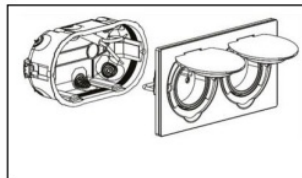
### Instruction for assembly

Thank you for purchasing our product. Please read this manual carefully and heed the safety warnings and instructions before installing, using or repairing the equipment. This will ensure not only the protection of persons, but also the long life of the equipment.

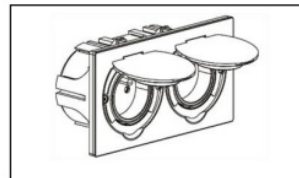
- Bring the installation box with a power cable to the desired place first.
- Disconnect mains from the power before the installation.
- Strip isolation max. 12mm ± 1mm from the end of each conductor.
- Maximum diameter of a conductor without isolation is 2mm.
- Insert L and N conductors correctly, follow the marks on cable inlets on the socket body.
- Make sure of inserted conductors are safety secured with the cable knobs.
- Attach the socket to the installation box with screws, tighten well.
- Installation must be carried by an authorized person only



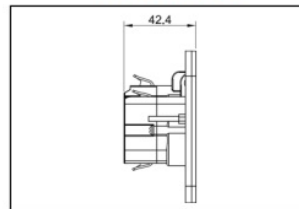
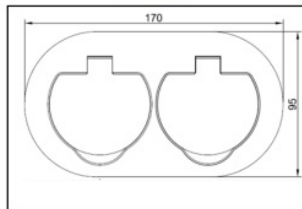
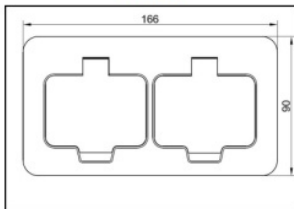
5B323



5B325

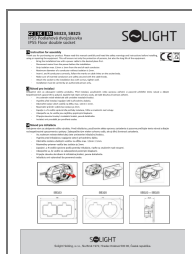


5B323 + 5B325



***Read More About This Manual & Download PDF:***

## Documents / Resources



**[SOLIGHT IP55 Floor Double Socket](#)** [pdf] Instruction Manual  
5B323, 5B325, IP55 Floor Double Socket, IP55, Floor Double Socket, Double Socket, Socket

## References

- [User Manual](#)