

SOLIGHT
SOLIGHT 1D100TH Smart Wi-Fi
Temperature and Humidity
Sensor



SOLIGHT 1D100TH Smart Wi-Fi Temperature and Humidity Sensor User Manual

[Home](#) » [Solight](#) » SOLIGHT 1D100TH Smart Wi-Fi Temperature and Humidity Sensor User Manual 

Contents

- [1 SOLIGHT 1D100TH Smart Wi-Fi Temperature and Humidity Sensor](#)
- [2 Product Information](#)
- [3 Product Usage Instructions](#)
- [4 Parameters](#)
- [5 Download the mobile app](#)
- [6 INTELLIGENT INTERCONNECTION](#)
- [7 Documents / Resources](#)
 - [7.1 References](#)
- [8 Related Posts](#)

SOLIGHT

SOLIGHT 1D100TH Smart Wi-Fi Temperature and Humidity Sensor



Product Information

Specifications

- Dimensions: 70x25x20mm
- Input Voltage: DC3V; 2x LR03 batteries
- Quiet Current: 6 uA
- Low Voltage: 2.5 V
- Wi-Fi: 802.11 b/g/n; 2.4GHz
- Working Temperature: Indoor use, 10% ~ 90% RH

Product Usage Instructions

Download the Mobile App

Download the Smart Life mobile app on Google Play for Android devices or on the App Store for iOS devices.

Registration

Register in the app using your email address. Once registered, click on Home and then + in the app interface or click on Add Device. Select Sensors and then choose Temperature and Humidity Sensor (Wi-Fi).3. Pairing Devices:

Pairing with Bluetooth Mode:

Turn on Bluetooth on your mobile phone, open the Smart Life app, select +, and press and hold the pairing button on the device for 5 seconds until the LED indicator flashes. The app will display Devices to be added, then press Go to add to automatically connect to the Wi-Fi network.

Pairing with EZ Mode

Press and hold the pairing button on the sensor for 5 seconds until the LED indicator flashes rapidly. Select EZ mode in the mobile app and press the Next button for automatic pairing.

FAQ

Q: Can I use the device outdoors?

A: No, the device is intended for indoor use only.

Parameters

Dimensions	70x25x20mm
Input voltage	DC3V; 2x LR03 batteries
Quiet current	≤ 6 uA
Low voltage	≤ 2.5 V
Wi-Fi	802.11 b/g/n; 2.4GHz
Working temperature	-10°C ~ 55°C
Working humidity	10% ~ 90% RH
The device is intended for indoor use	

Download the mobile app

Download the Smart Life mobile app on Google Play for Android devices or on the App Store for iOS devices.

**Registraon**

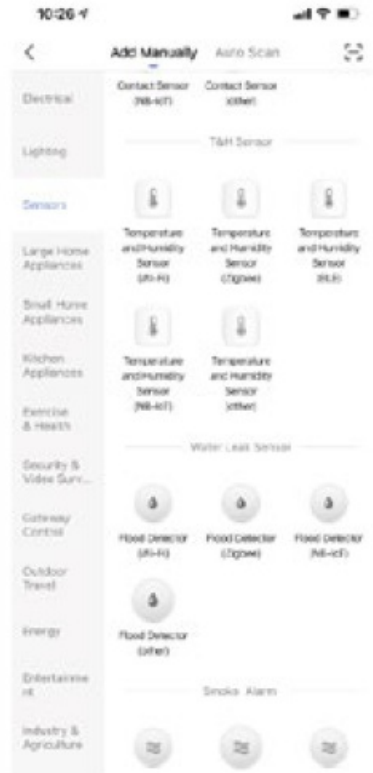
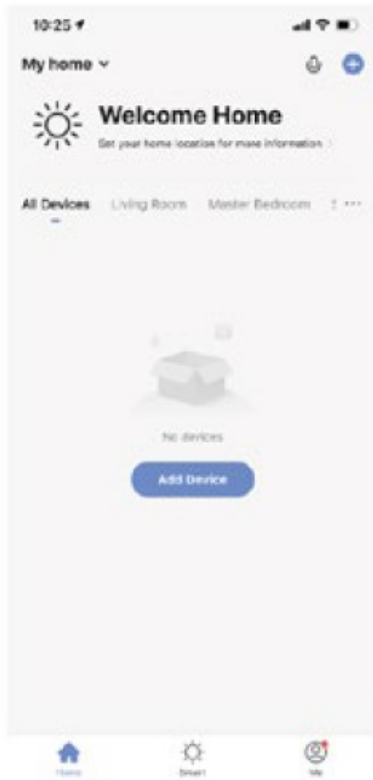
Register in the app using your email address and once you have completed the registration, click on “Home” and then “+” in the app interface or click on “Add Device”.

Then select “Sensors” and select “Temperature and Humidity Sensor (Wi-Fi)”.

Pairing devices

The user can connect to the WiFi network in the following ways:

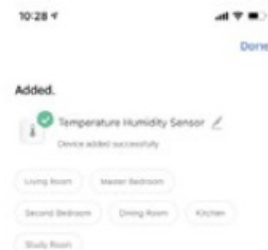
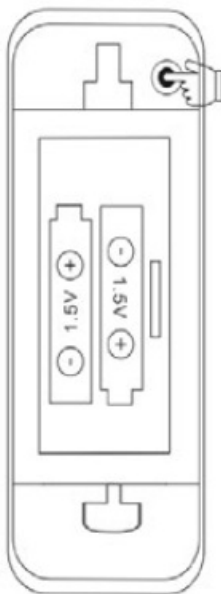
1. Bluetooth mode
2. EZ mode



1. Pairing with Bluetooth mode

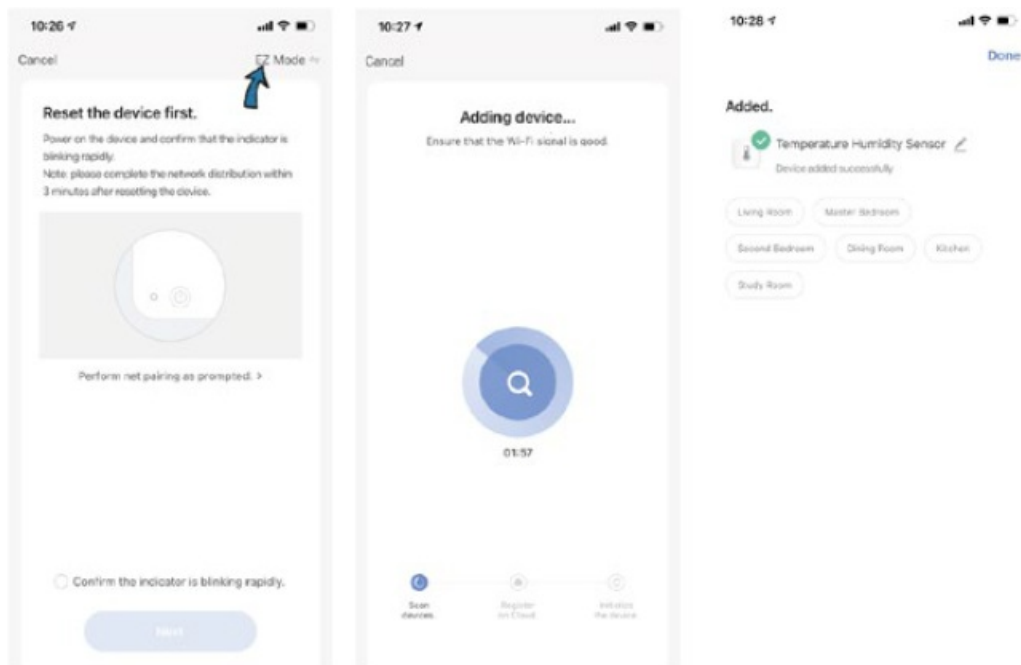
First turn on Bluetooth on your mobile phone, then open the Smart Life app and select “+”. Press and hold the pairing button for 5 seconds | the LED indicator flashes. The mobile app will then display “Devices to be added: 1”. Finally, press “Go to add” , it will automatically connect to the Wi-Fi network.

Pairing button↓



2. Pairing with “EZ” mode

EZ (Easy-Connect Network) mode is a simplified pairing. Press and hold the pairing button on the sensor for 5 seconds, the LED indicator will flash rapidly. Select “EZ mode” in the mobile app and press the “Next” button. The device will pair automatically.



When connected to WiFi:

Click on the sensor icon to enter the application interface and make further settings. Here you can preset the temperature and humidity value for the alert.

- **1 2 Temperature/humidity alarm:**

The first is the “higher temperature/humidity alarm”, the second is the “lower temperature/humidity alarm”, the third is the “lower temperature/humidity alarm” (the third means the temperature/humidity returns to the set range).

- **3 4 Temperature/humidity reporting cycle:**

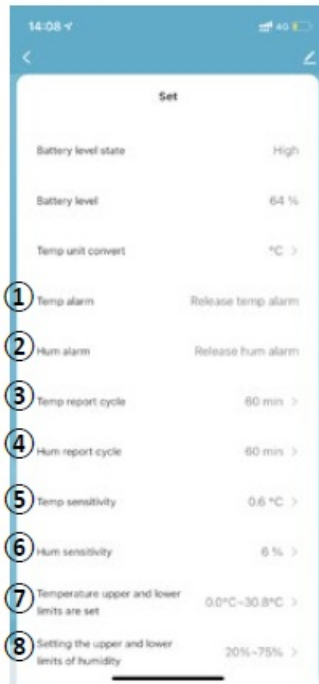
Set the time for synchronizing the sensor’s temperature and humidity values with the application. (The factory default setting is 120 minutes)

- **5 6 Temperature/humidity sensitivity:**

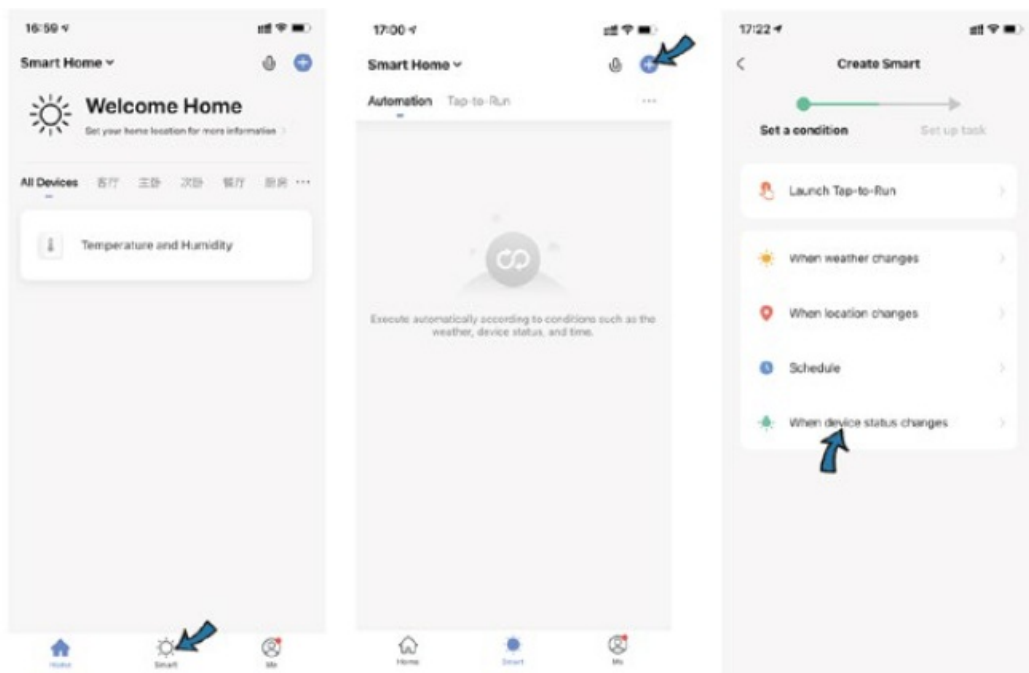
Sensor temperature/humidity sensitivity settings are synchronized with the app when the upper/lower temperature/humidity preset is set. For example, now the temperature is 28.0°C and the humidity is 70%, the temperature/humidity sensitivity is $\pm 0.6/6\%$, then the sensor temperature/humidity value is synchronized with the application when the temperature/humidity is 28.60°C or 27.40°C / 76% or 64%. (Factory default: temperature sensitivity is 0.60°C, humidity sensitivity is 6%).

- **7 8 Sets the upper and lower limits of temperature/humidity:**

Set the temperature/humidity range.



INTELLIGENT INTERCONNECTION



You can use smart connectivity when you change the environment. For example, the air conditioning automatically switches on when the room temperature exceeds 35 °C. And the humidifier will start if the humidity is below 20%.

Device sharing

You can share the added devices with family members so they can also monitor the status of their surroundings.

Temperature unit selection in the application

You can select °C or °F as the temperature unit via the app.


Third-party voice control

Compatible with Amazon Alexa, Google Assistant



The product has been issued with a CE Declaration of Conformity and a Declaration of Performance in accordance with the applicable regulations. On request from the manufacturer: info@solight.cz or download www.solight.cz

Documents / Resources

	<p>SOLIGHT 1D100TH Smart Wi-Fi Temperature and Humidity Sensor [pdf] User Manual 1D100TH Smart Wi-Fi Temperature and Humidity Sensor, 1D100TH, Smart Wi-Fi Temperature and Humidity Sensor, Wi-Fi Temperature and Humidity Sensor, Temperature and Humidity Sensor, Humidity Sensor, Sensor</p>
---	---

References

- [☺ SOLIGHT.cz | Váš B2B partner a velkoobchod pro Osvětlení, Elektro, Smart Home, Měřicí techniku a dalších 1500+ produktů](#)
- [User Manual](#)

Manuals+, Privacy Policy

This website is an independent publication and is neither affiliated with nor endorsed by any of the trademark owners. The "Bluetooth®" word mark and logos are registered trademarks owned by Bluetooth SIG, Inc. The "Wi-Fi®" word mark and logos are registered trademarks owned by the Wi-Fi Alliance. Any use of these marks on this website does not imply any affiliation with or endorsement.