

SOLIGHT
1D100PIR
Smart WiFi
PIR Sensor



Solight 1D100PIR Smart WiFi PIR Sensor Instruction Manual

[Home](#) » [Solight](#) » Solight 1D100PIR Smart WiFi PIR Sensor Instruction Manual 

Contents

- [1 Solight 1D100PIR Smart WiFi PIR Sensor](#)
- [2 Specifications](#)
- [3 Product Usage Instructions](#)
- [4 FAQ](#)
- [5 INTRODUCTORY INFORMATION](#)
- [6 PARAMETERS](#)
- [7 DESCRIPTION](#)
- [8 After a successful connection to the network](#)
- [9 Description of settings](#)
- [10 Documents / Resources](#)
 - [10.1 References](#)



Solight 1D100PIR Smart WiFi PIR Sensor



Specifications

- **Input voltage:** 2 x AAA batteries
- **Quiet current:** 20mA
- **Alarm current:** 60mA
- **Detection distance:** 6-8 m
- **Detection angle:** Not specified
- **Low voltage:** 2.4V
- **Working humidity:** 10%~90%RH
- **Wi-Fi:** IEEE 802.11b/g/n 2.4GHz
- **Intended for indoor use**

Product Usage Instructions

- Download the “Smart Life” mobile app from the Google Play Store or App Store.
- Turn on Bluetooth on your mobile device.
- In the app, click on the “+” sign to add a device.
- Press and hold the pairing button on the detector for about 5 seconds until the indicator flashes.
- Enter the correct Wi-Fi password in the app and press “Done” to connect.
- You can share the device with family members and connect it with other smart devices via Smart Life.
- The battery life depends on the frequency of motion detection. More triggers lead to shorter battery life.

FAQ

- **Q:** How do I change the Wi-Fi network for the device?
- **A:** To change the Wi-Fi network, reset the device by pressing and holding the pairing button until the indicator flashes rapidly. Then follow the pairing steps again with the new network.

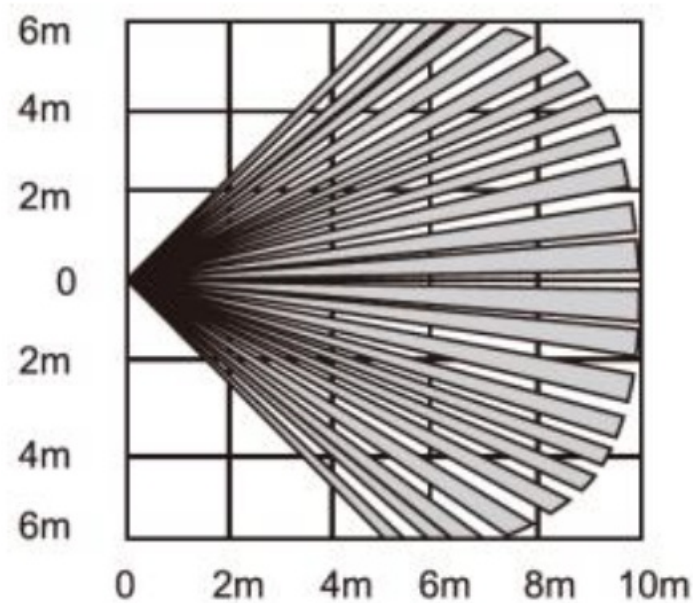
- **Q:** Can I adjust the detection sensitivity of the sensor?
- **A:** The detection sensitivity is preset and cannot be adjusted manually.
- **Q:** What should I do if the device is not connecting to the Wi-Fi network?
- **A:** Ensure that you are entering the correct Wi-Fi password and that the device is within range of the Wi-Fi signal. You may also try resetting the device and re-pairing it with the network.

INTRODUCTORY INFORMATION

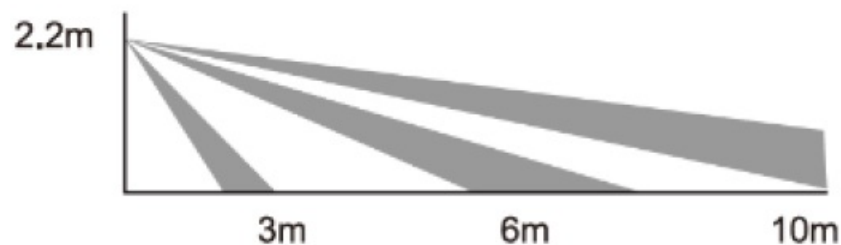
- The detector is used to detect the entry of people into the room thanks to a sensor that captures the infrared rays of the intruder.
- The device can then go into an alarm state and inform about the intrusion.

DETECTION AREA

- View from above



- Side view

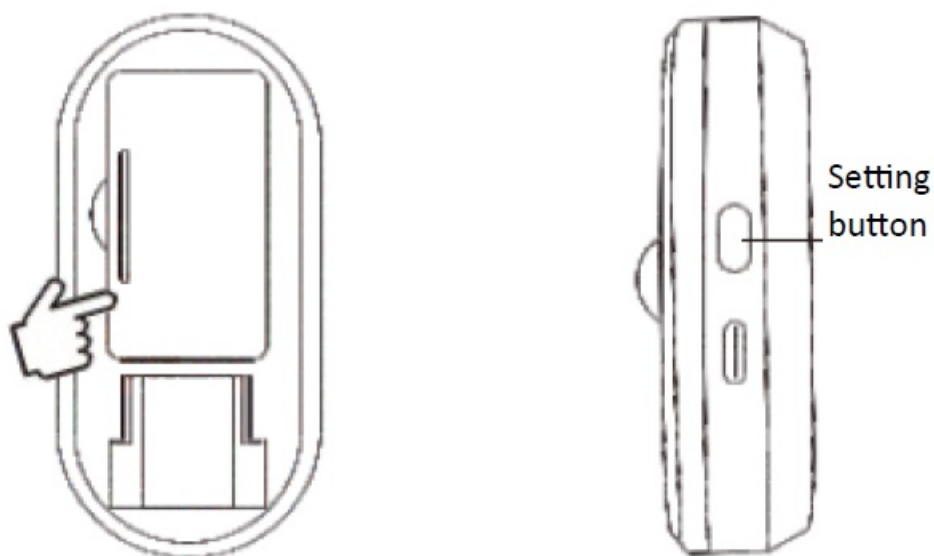


PARAMETERS

Input voltage	2 x AAA batteries
Quiet current	20mA
Alarm current	≤ 60mA
Detection distance	6-8 m
Detection angle	110°
Low voltage	≤2.4V
Working temperature	-10°C~55°F
Working humidity	10%~90%RH
Wi-Fi	IEEE 802.11b/g/n 2.4GHz
The device is intended for indoor use	

DESCRIPTION

- Open the back cover and place the batteries



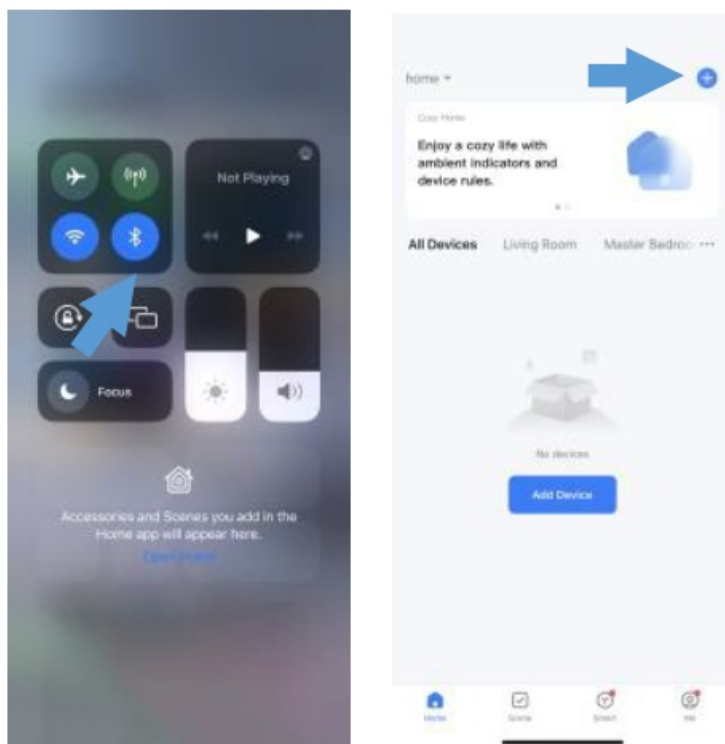
Download the mobile app

- Download the Smart Life mobile app on Google Play for Android devices or on the App Store for iOS devices.

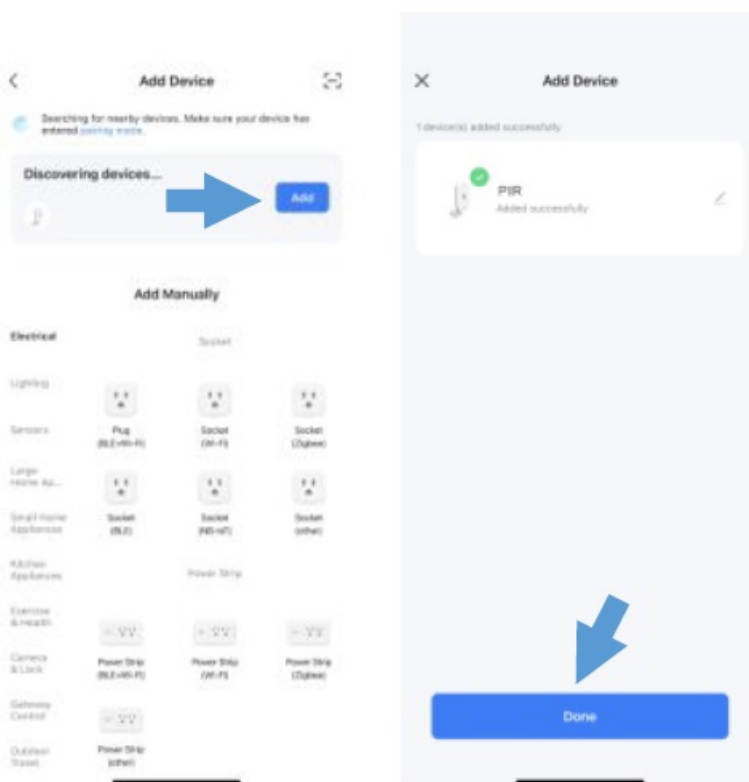


Pairing

First, turn on Bluetooth on your mobile device. Then open the Smart Life app and click “+”. On the detector, press and hold the pairing button (shown in the picture) for about 5 seconds and the indicator will flash.



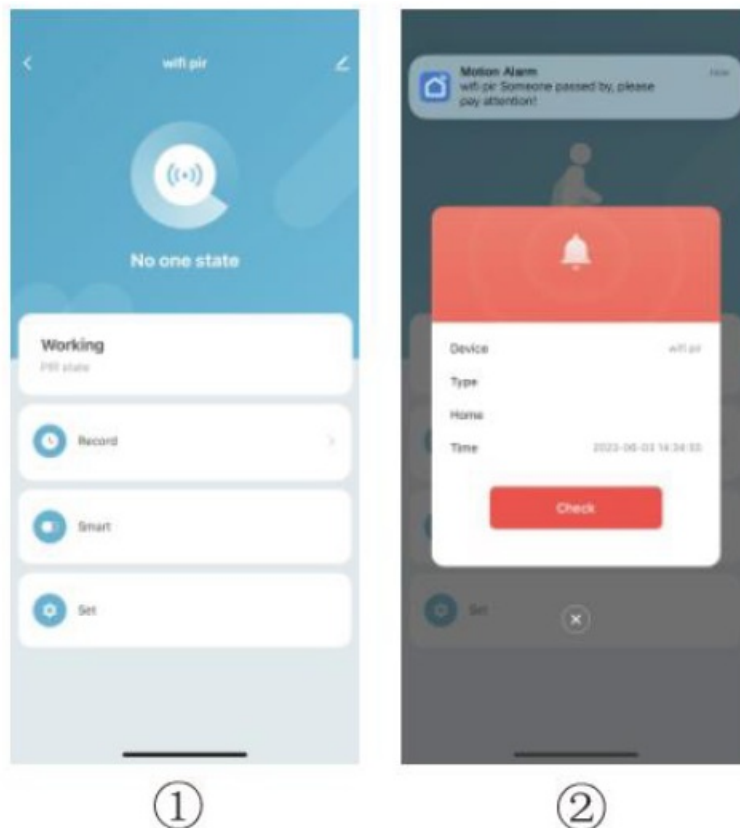
- The mobile app will display “Discovering devices”. Press the “Add” button, enter the correct WiFi password, and press the “Done” button – the WiFi network will eventually connect automatically.



After a successful connection to the network

It will display

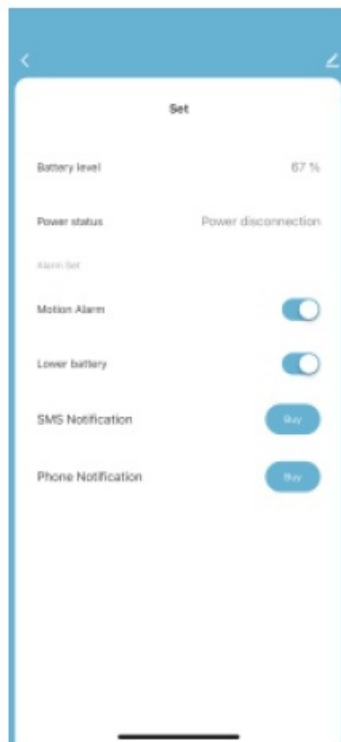
1. “No one state” – This means that the detector has not detected any movement of the person.
2. “Motion Alarm” – This means that the sensor has detected a person and an alarm (alert) is triggered, the app sends a “Someone passed by” alert.



Description of settings

- If you want to set an alarm when you leave the device, you can do so either in the app or by pressing the button on the alarm 4 times.
- The device will alarm, you will see this status in the app.

Description of settings in the app



Battery level

- Battery charge level

Motion alarm

- Enable/disable sending notifications when motion is detected

Lower battery

- Low battery warning on/off

Device sharing

- You can share added devices with family members so they can access the detector.

Intelligent interconnection

- If the sensor detects/does not detect a person, the sensor and other smart devices can be connected via Smart Life.

Battery life

- The more the sensor detects motion, the shorter the battery life (battery life will depend on the time the sensor is triggered).



The product has been issued with a CE Declaration of Conformity and a Declaration of Performance per the applicable regulations. On request from the manufacturer: info@solight.cz or download www.solight.cz.

Documents / Resources

 <p>Manual for Solight Smart WiFi PIR Sensor 1D100PIR</p>	<p>Solight 1D100PIR Smart WiFi PIR Sensor [pdf] Instruction Manual 1D100PIR Smart WiFi PIR Sensor, 1D100PIR, Smart WiFi PIR Sensor, WiFi PIR Sensor, PIR Sensor</p>
--	---

References

- [☺ SOLIGHT.cz | Váš B2B partner a velkoobchod pro Osvětlení, Elektro, Smart Home, Měřicí techniku a dalších 1500+ produktů](#)
- [User Manual](#)

Manuals+, Privacy Policy

This website is an independent publication and is neither affiliated with nor endorsed by any of the trademark owners. The "Bluetooth®" word mark and logos are registered trademarks owned by Bluetooth SIG, Inc. The "Wi-Fi®" word mark and logos are registered trademarks owned by the Wi-Fi Alliance. Any use of these marks on this website does not imply any affiliation with or endorsement.