



Solid State Logic Live Digital Console Instructions

[Home](#) » [Solid State Logic](#) » Solid State Logic Live Digital Console Instructions 

Solid State Logic Live Digital Console



Contents

- [1 Introduction](#)
- [2 Console Software & Firmware Overview](#)
- [3 Create the Flat Install USB Stick](#)
- [4 Install Console Software](#)
- [5 Additional Updates/Installations](#)
- [6 Updating TaCo on Android, iOS and macOS Devices:](#)
- [7 Software Licence Agreement](#)
- [8 Documents / Resources](#)
 - [8.1 References](#)
- [9 Related Posts](#)

Introduction

This document contains essential information – please read it carefully before making any attempt to upgrade the system. If any steps are unclear or your system does not meet the requirements stated below, contact your local SSL office prior to attempting this update.

This document describes the software and firmware installation for SSL Live consoles, MADI I/O and local/remote Dante routing hardware (Local Dante Expander, BL II Bridge and X-Light Bridge) where applicable. For Network I/O stagebox update instructions, refer to the download package linked below.

Document Revision History

V1.0	Initial release	EA	March 2022

Requirements

- Console running V4 software or later
- Blank USB drive – 8GB or larger – for Flat Install image
- Additional USB drive for backing up console files
- USB Keyboard
- [Live V5.1.6 software image file](#)
- [Rufus V3.5](#) software installed on a Windows PC
- [Optional] [SOLSA V5.1.6 installer](#)
- [Optional] [Network I/O Stagebox V4.3 Package](#) – applicable to Dante stageboxes
- [Optional] [WinMD5](#) checksum validation tool installed on a Windows PC
- [Optional] [TeamViewer Installer](#) and login credentials (service use only)

Important Notes

1. USB-based FPP Dante Control network interfaces installed in early Live consoles are no longer supported. If the console has not yet been upgraded to a PCIe-based network interface, [contact your local support office](#) prior to commencing the
2. The console must be running version V4.10.17 Control Software or later. If the console is running earlier software, [contact your local support office](#) prior to commencing the update.
3. Refer to the 'Known Issues' section of the V5.1.6 Feature Release Notes
4. The optional installer for TeamViewer is not included in this release. If reinstallation of TeamViewer is required, [contact your local support office](#) to extract the existing .exe installer file prior to commencing the update.

Once extracted, reinstallation can be completed at any time after the update.

5. Show files subsequently saved in V5.1.6 cannot be loaded in earlier console software.

Console Software & Firmware Overview

Numbers in bold denote new software and firmware versions for the release.

Control Software		V4.11.13	V4.11.18	V5.0.13	V5.1.6
Operating System		3.303.4.0	3.303.6.0	3.493.4.0	3.493.6.0
OCP Software	L650	N/A		5.607.01.14	5.615.01.14
	L550	4.585.10.11	4.585.10.11	5.607.01.11	5.615.01.11
	L450	N/A		5.607.01.14	5.615.01.14
	L350	4.484.10.8	4.484.10.8	5.607.01.8	5.615.01.8
	L500 Plus	4.585.10.2	4.585.10.2	5.607.01.2	5.615.01.2
	L500/L300	4.585.10.1	4.585.10.1	5.607.01.1	5.615.01.1
	L200/L100	4.585.10.7	4.585.10.7	5.607.01.7	5.615.01.7
Internal I/O 023 Card		2535	2535/2538*	2535/2538*	2535/2538*
OCP 020 Card	L350/L450/L550/L650	500778	500778	500778	500778
	L500/L500 Plus	6123	6123	6123	6123
	L100/L200/L300	500778	500778	500778	500778
L100/L200/L300 Internal 051 Card		6050	6050	6050	6050
L350/L450/L550/L650 Internal 051 Card(s)		6050	6050	6050	6050
022 Sync Card Main (excludes L100)		264	264	264	264
022 Sync Card Core (excludes L100)		259	259	259	259
L500/L500 Plus 034 Mezzanine Card		20720	20720	20720	20720
Dante Expander Card (Brooklyn) L100/L200/L300/L350/L550		V4.1.25701	V4.1.25701	V4.1.25701	V4.1.25701
Dante Expander Card (Brooklyn) L500/L500 Plus		V4.1.25701	V4.1.25701	V4.1.25701	V4.1.25701
Fader / Master / Control Tile		25191	25191	26334	26334

*IO Card firmware version 2538 for consoles with both upper and lower 626023X5 cards fitted.

Please Note: The Update button next to the OCP Brooklyn Software entry in the system list will transfer the .dnt file to an attached USB stick. This Update button function is always active regardless of whether an update is required or not. Page

MADI I/O Firmware Overview

Released with Console Software	V4.11.13	V4.11.18	V5.0.13	V5.1.6
Live I/O ML 023 Card	2535	2535	2535	2535
Live I/O ML 041 Card	2521	2521	2521	2521
Live I/O D32.32 041 Card	2521	2521	2521	2521
Live I/O D32.32 053 Card	2494	2494	2494	2494
BLII Concentrator 051 Card (Twin)	6036	6036	6036	6036
BLII Concentrator 051 Card (Single)	6050	6050	6050	6050

Network I/O Firmware

Released with Console Software	V4.11.13	V4.11.18	V5.0.13	V5.1.6
Stage box Update Package	4.2	4.2	4.3	4.3
Net I/O Controller	1.11.6.44902	1.11.6.44902	1.11.6.44902	1.11.6.44902
Net I/O Updater	1.10.42678	1.10.42678	1.10.6.49138	1.10.6.49138
SB 32.24 SSL Firmware	26181	26181	26621	26621
SB 32.24 Dante Firmware Main (A)	4.1.26041	4.1.26041	4.1.26041	4.1.26041
SB 32.24 Dante Firmware Comp (B)	4.1.26041	4.1.26041	4.1.26041	4.1.26041
SB 8.8 & SB i16 SSL Firmware	23927	23927	23927	23927
SB 8.8 & SB i16 Dante Firmware	4.1.25840	4.1.25840	4.1.25840	4.1.25840
A16.D16, A32, D64 SSL Firmware	25547	25547	26506	26506
A16.D16, A32, D64 Dante Firmware	4.1.25796	4.1.25796	4.1.25796	4.1.25796
BLII Bridge SSL Firmware	23741	23741	23741	23741
BLII Bridge Dante Firmware	2.4.25703	2.4.25703	2.4.25703	2.4.25703
X-Light 151 SSL Firmware	23741	23741	23741	23741
X-Light 151 Dante Firmware	2.4.25703	2.4.25703	2.4.25703	2.4.25703
GPIO 32 SSL Firmware	25547	25547	25547	25547
GPIO 32 Dante Firmware	4.1.25796	4.1.25796	4.1.25796	4.1.25796
PCIe-R Dante Firmware	4.2.0.9	4.2.0.9	4.2.0.9	4.2.0.9
MADI Bridge SSL Firmware	24799	24799	24799	24799
MADI Bridge Dante Firmware	4.1.25700	4.1.25700	4.1.25700	4.1.25700

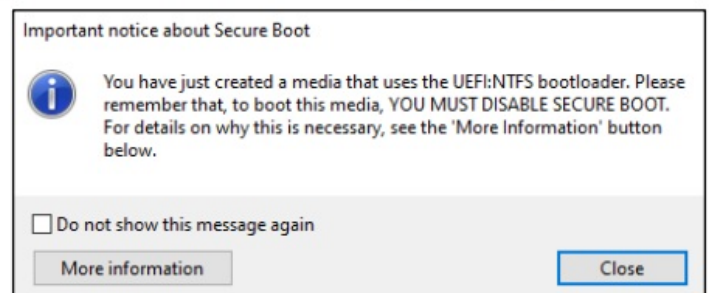
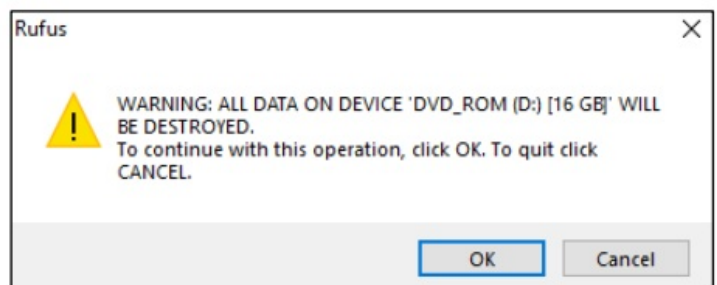
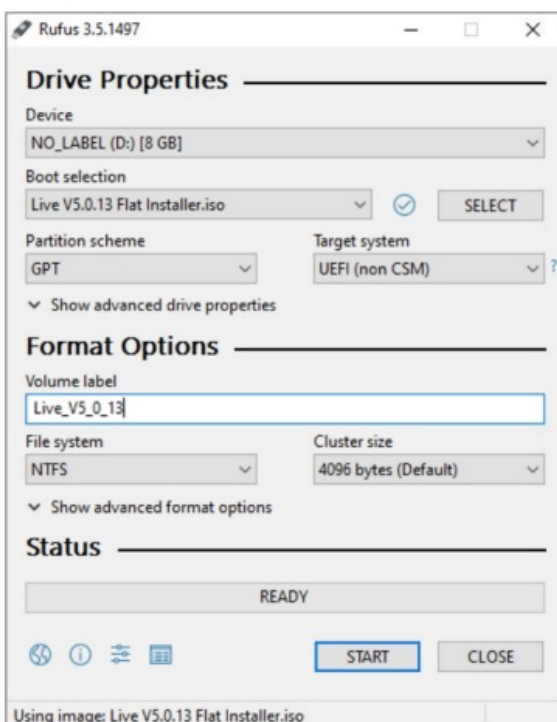
App Version Overview

Released with Console Software	V4.11.13	V4.11.18	V5.0.13	V5.1.6
TaCo App – Android and iOS	4.5.1	4.5.1	4.6.0	4.6.0
TaCo App – macOS	4.5.1	4.5.1	4.6.1	4.6.1
Help App	14.0.3	14.0.3	14.0.3	14.0.3

Create the Flat Install USB Stick

Create the Flat Install USB Stick

1. Download the Live V5.1.6 software image file using the link above.
2. Optional] Run a checksum on the downloaded file using WinMD5. The checksum value is:
cef30720a6c0e991f3fd8101d3dc40f2
3. Download Rufus 3.5 and run the .exe application. Select the software image file in Boot selection, choose the correct USB drive under Device, and ensure the Partition scheme is set to GPT.
4. Enter a suitable Volume label so that the drive can be identified in future. e.g. Live V5.1.6 Flat Installer
5. Select Start and Confirm that you wish to erase all data on the USB drive by clicking OK. Rufus will now partition your device and copy the files. (USB2 will take approximately 40mins, USB3 5mins)
6. Once the process is complete there will be an 'Important notice about Secure Boot'. This can be ignored – press Close. The USB Flat Installer is now ready to be used.



Please Note: A USB memory stick that identifies itself as a fixed hard disk will not be suitable for this update. Use a USB stick that identifies itself as a removable storage device.

Install Console Software

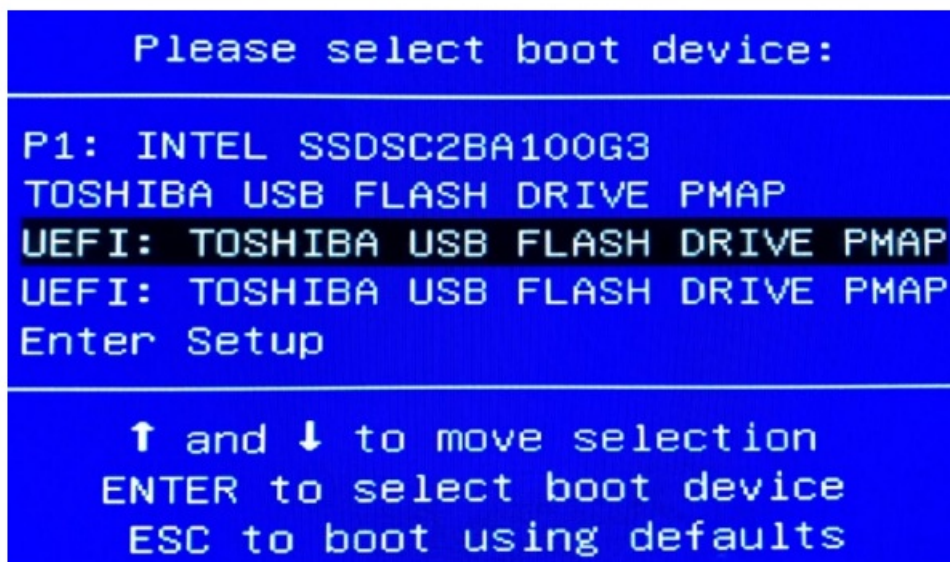
Preparation and Update Order

1. Backup of system files – insert a spare USB drive (not Flat Installer) then navigate to Menu>Setup>System/Power to use the Backup Data function.

2. Load a blank showfile template – clears routing and relinquishes any ownership.
3. Set console to Internal clock and 96 kHz operational mode.
4. Power off the console.
5. Remove external screen connections.
6. Remove or power off ancillary I/O, network and USB devices not required for the update.
7. Update console FPP Control Software (flat install).
8. Automatic OCP (DSP Engine) software updates.
9. Update Control Surface tiles/assembly firmware from GUI. 10. Network I/O updates using Network I/O V4.3 Package (if not already updated). 11. Other updates including SOLSA and TeamViewer TeamViewer re-installation where relevant.

Operating System & Control Software Update

1. Insert the USB install stick and a keyboard to any available USB ports.
2. Power on the console and tap F7 on the keyboard continuously to open the boot menu.
3. Use the Up/Down arrow keys on the keyboard to select the UEFI device (USB Flat Installer) then press Enter. If there are two devices listed as per screenshot below, select the upper UEFI option. The console will now boot from the USB Flat Installer.



4. A screen showing 'Windows is Loading Files....' will appear for a few minutes, then a Command Prompt window 'Solid State Logic Tempest Installer' will be shown with a list of selection options numbered 1-6. Choose option 1) Install image and KEEP user data. This retains the existing console configuration

```

=====
Solid State Logic Tempest Installer
=====

SystemT_MB Main Menu
Please choose from the options below

1> Install image and KEEP user data
2> Install image and ERASE user data
3> Restore user data
4> Factory reset
5> Goto command prompt
6> Do nothing and reboot

[1,2,3,4,5,6]?_

```

5. Progress will be shown at the bottom of the window as a percentage, taking approximately five minutes to complete. Upon completion, the message 'The operation completed successfully. Please press 1 to REBOOT.' is displayed. Follow the onscreen instruction and press number 1 on the keyboard to reboot:

```

Installing image on C:

ImageX Tool for Windows
Copyright (C) Microsoft Corp. All rights reserved.
Version: 6.1.7600.16385

[ 100% ] Applying progress
Successfully applied image.
Total elapsed time: 4 min 17 sec

The operation completed successfully.
The operation completed successfully.
The operation completed successfully.

Please press 1 to REBOOT

```

6. Windows Setup will begin with various progress screens and automatic restarts during this process. At times it may look like the installer is not active. Be patient and DO NOT power cycle the console during this process. When complete the console will boot into the usual Front Panel display/console GUI.
7. Navigate to MENU>Setup>System and verify that the Current Version numbers for the Control Software and Operating System match those listed in the table above.
8. Restart the console once more to permit the console name file to be read

OCP Software (automatic)

This process is automatic and will happen within three minutes of the FPP booting into the new software. Menu>Setup>System/Power will show 'Automatic Update Pending' next to the OCP Software entry, followed by 'Error: Connection Lost' for both this and OCP 020 Card. This is a result of code being downloaded and the OCP rebooting itself. Connection will reestablish itself shortly afterwards. Upon reconnection both the OCP and OCP 020 card will display their current version. Refer to the 'Console Software & Firmware Overview' table earlier in this document to confirm these.

OCF 020 Card (as required)

No update is required if the console was already running V4.11.x previously. If updating a console from V4.10.17 software the OCF 020 card will show a required update. Press-and-hold the Update button. Upon completion, restart the console and confirm the programmed version is correct, referencing the Console Software & Firmware Overview' table.

Update Surface Tiles

The Menu>Setup>System/Power page lists all connected control surface tiles and internal card assemblies that can be programmed. Required control surface updates are automatically prompted and can be completed in any order. Press-and hold the active Update button(s). The screen and surface will be locked out while each update is in progress. Control surface tiles will automatically restart and reconnect upon completion. Repeat the process for all required tiles.

Additional Updates/Installations

Network I/O V4.3 Package [Download the package](#) then refer to the included installation notes.

Live SOLSA Software

[Download the package](#) then refer to the included installation notes.

Installing TeamViewer

Contact your local [SSL Distributor](#) or [SSL Support office](#) to obtain a service code and full instructions if this feature is required. The installer file can be [downloaded here](#).

Installing/Updating SSL Live TaCo Apps TaCo's version number is displayed in the bottom right corner of the TaCo app. A new version of TaCo is released for V5.0 console software – refer to the tables above for more information.

The TaCo app can be found in the app stores by searching “SSL Live TaCo” or from these links:

[Download SSL Live TaCo from the iOS App Store](#)

[Download SSL Live TaCo from the macOS App Store](#)

[Download SSL Live TaCo from the Google Play Store](#)

If already installed and automatic app updates on your device are set to “Off” (recommended), the SSL Live TaCo app will need to be updated manually as below.

Updating TaCo on Android, iOS and macOS Devices:

1. Connect your device to the internet and open the App Store (Apple devices) or Google Play Store (Android devices).
2. Search for ‘SSL Live Taco’ then select it to open the App details
3. Select **Update**

Software Licence Agreement

By using this Solid State Logic product and the software within it you agree to be bound by the terms of the relevant End User Licence Agreement (EULA), a copy of which can be found at <https://www.solidstatellogic.com/legal>. You agree to be bound by the terms of the EULA by installing, copying, or using the software.

Written Offer for GPL and LGPL Source Code Solid State Logic uses Free and Open Source Software (FOSS) in some of its products with corresponding open source declarations available at <https://www.solidstatellogic.com/legal/general-end-user-license-agreement/free-open-source-software-documentation>. Certain FOSS licenses require Solid State Logic to make available to recipients the source code corresponding to the FOSS binaries distributed under those licenses. Where such specific license terms entitle you to the source code of such software, Solid State Logic will provide to anyone upon written request via e-mail and/or traditional paper mail within three years after the distribution of the product by us the applicable source

code via CD-ROM or USB pen drive for a nominal cost to cover shipping and media charges as allowed under the GPL and LGPL.

Please direct all enquiries to: support@solidstatellogic.com

Visit SSL at: www.solidstatellogic.com

© Solid State Logic

All rights reserved under International and Pan-American Copyright Conventions SSL®, Solid State Logic® and Tempest® are ® registered trademarks of Solid State Logic. Live L100™, Live L100 Plus™, Live L200™, Live L200 Plus™, Live L300™, Live L350™, Live L350 Plus™, Live L450™, Live L500™, Live L500 Plus™, Live L550™, Live L550 Plus™, Live L650™, Blacklight™, X- Light™, ML32:32™, Network I/O™ are ™ trademarks of Solid State Logic. Dante™ and Audinate™ are trademarks of Audinate Pty Ltd. All other product names and trademarks are the property of their respective owners and are hereby acknowledged. No part of this publication may be reproduced in any form or by any means, whether mechanical or electronic, without the written permission of Solid State Logic, Oxford, OX5 1RU, England As research and development is a continual process, Solid State Logic reserves the right to change the features and specifications described herein without notice or obligation. Solid State Logic cannot be held responsible for any loss or damage arising directly or indirectly from any error or omission in this manual. E&OE October 2021

Live

Solid State Logic

O X F O R D • E N G L A N D

Documents / Resources

<div><div>Solid State Logic</div><div>O X F O R D • E N G L A N D</div><div>Live</div><div>VS-1.6</div><div>Update Instructions</div></div>	<div><div>Solid State Logic Live Digital Console [pdf] Instructions</div><div>Live Digital Console, Live, Digital Console, Console</div></div>
---	--

References

- ^{SSL} [Solid State Logic | Leading the way in Sound](#)
- ^{SSL} [Legal | Solid State Logic](#)