

## Solarman Application User Guide

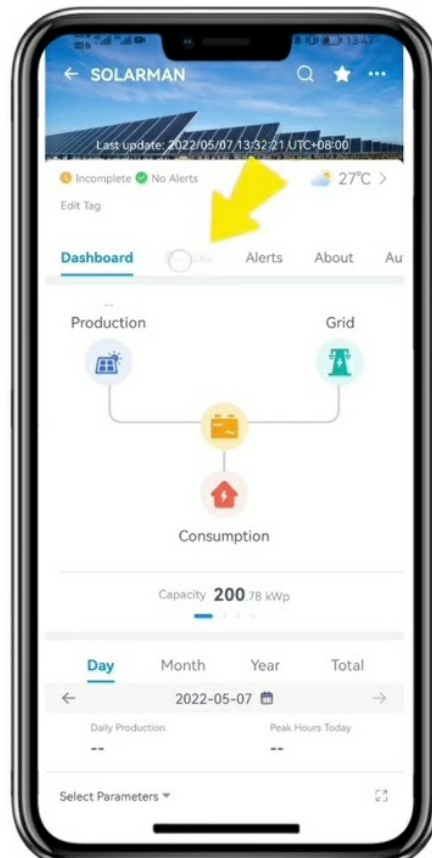
[Home](#) » [SOLARMAN](#) » Solarman Application User Guide 

### Contents

- 1 Solarman Application
- 2 Product Information
- 3 Product Usage
- 4 Downloading the application
- 5 Registration
- 6 Creation of an installation
- 7 WiFi connection setup
  - 7.1 Configuration for Android users
  - 7.2 Configuraja for iOS users
- 8 Documents / Resources
- 9 Related Posts



### Solarman Application



## Product Information

### SOLARMAN Application User Manual

The SOLARMAN Application is a mobile application that allows users to manage their solar power installations. It is developed by IGEN Tech. Co., Ltd. and can be downloaded from the Apple Store for iPhone users and Google Play for Android users.

### Registration

To use the application, users need to create a new account by clicking on the “Register” button and providing their email address.

## Product Usage

### Creation of an Installation

To create a new installation, click on the “+” button and select “Create Plant”. Then, scan the serial number of the recorder or enter it manually. Enter the installation information such as location, type of installation, type of network, and capacity. Users can leave energy prices and surcharges at their default values as the application takes local values for them. Users should also enter a name for the installation according to the scheme location + name + capacity (e.g., Wuxi IGEN 8.1 KW).

### WiFi Connection Setup

To connect to WiFi, select the installation and choose the “Connect Again” option in the devices tab. Select the device and click “Done” to proceed to the next step. For Android users, the application will automatically detect the connection to the WiFi network, and users need to enter the WiFi password to continue the configuration. If the wrong network is selected, users should select “Switch Network” and search or manually enter the network ID. The connection will be automatically established under successful login into the network. The setup usually takes 3-5 minutes. IOS users, they need to go to the network settings interface on their iPhone and select the network number AP\_XXXXX(S/N) of the data logger. Then, go back to the SOLARMAN app, and the logger will start the configuration. If the network with the ID according to the scheme AP\_XXXXX(S/N) cannot be found in the list of wireless networks, users should reduce the distance between WiFi routers and the DVR to less than 10 meters. Otherwise, a connection error may occur. If users have followed the above recommendation and the AP\_XXXXX

network is still not available, they should refer to the Data Recorder Manual to identify the error or contact customer service.

## IGEN Tech. Co., Ltd.

- **Address:** A2-B-4, Tian'an iPark, No.228 Linghu Avenue, New District, Wuxi, Jiangsu Province, China
- **Customer service:** +86 400 181 0512
- **Customer service email:** [customerservice@solarmanpv.com](mailto:customerservice@solarmanpv.com).

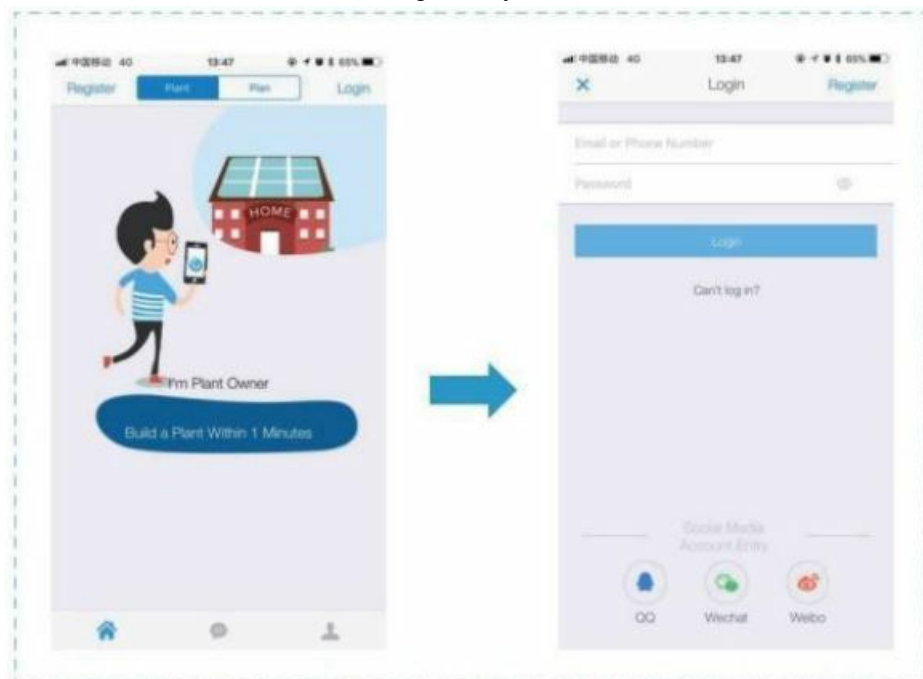


## Downloading the application

- **iPhone:** Search for “SOLARMAN” in the Apple Store.
- **Android:** Search for “SOLARMAN” on Google Play.

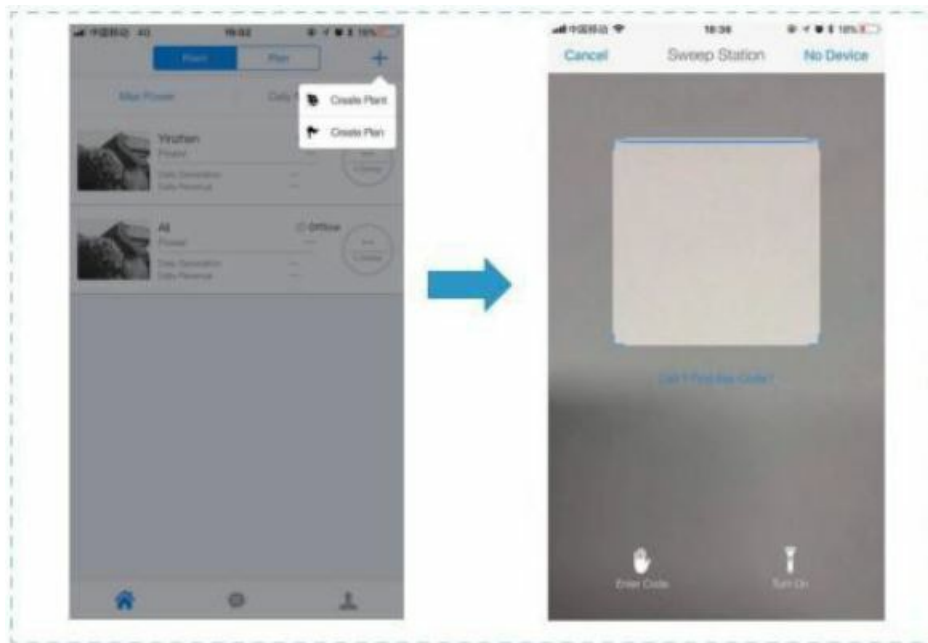
## Registration

Click [Register] to create a new account. You can register by email.



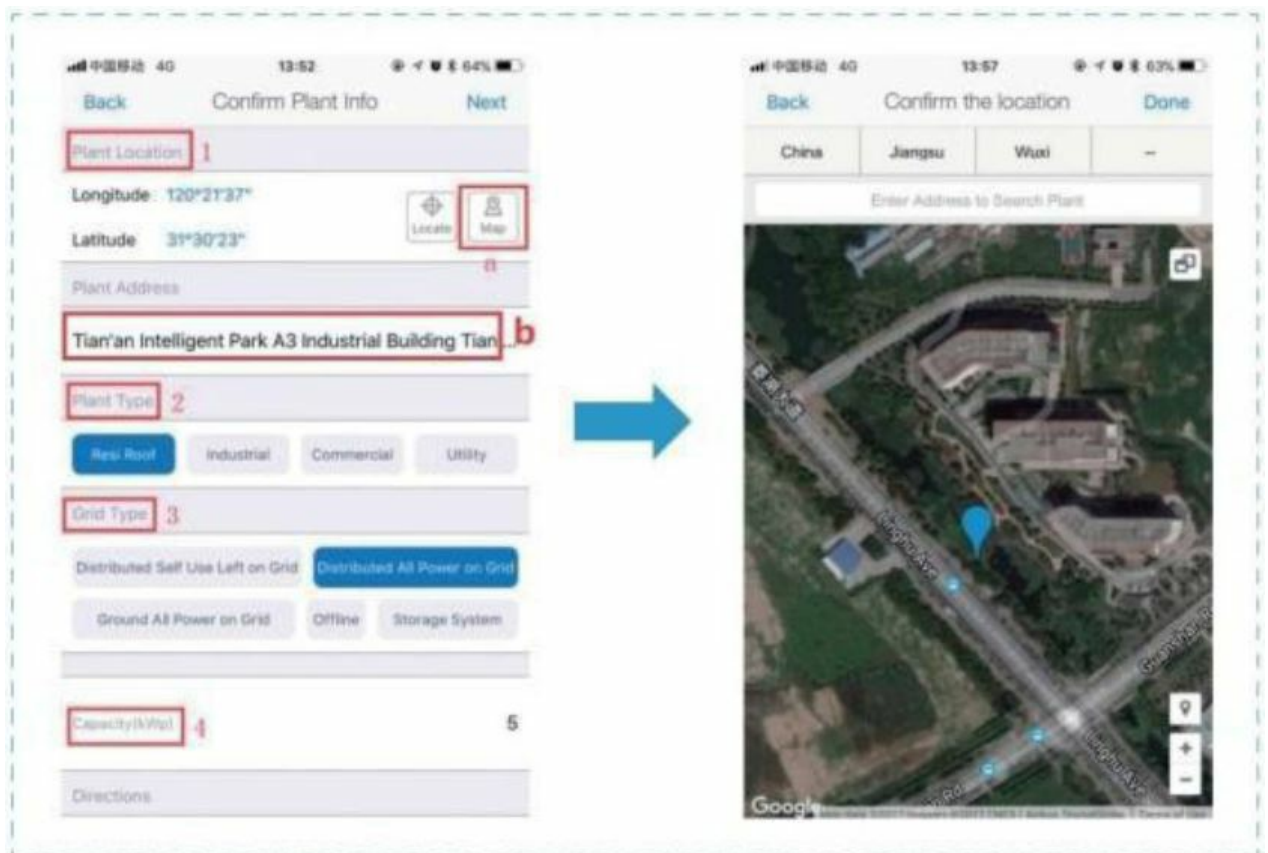
## Creation of an installation

1. Click [+] and select [Create Plant]. Then scan the serial number of the recorder or enter it manually.



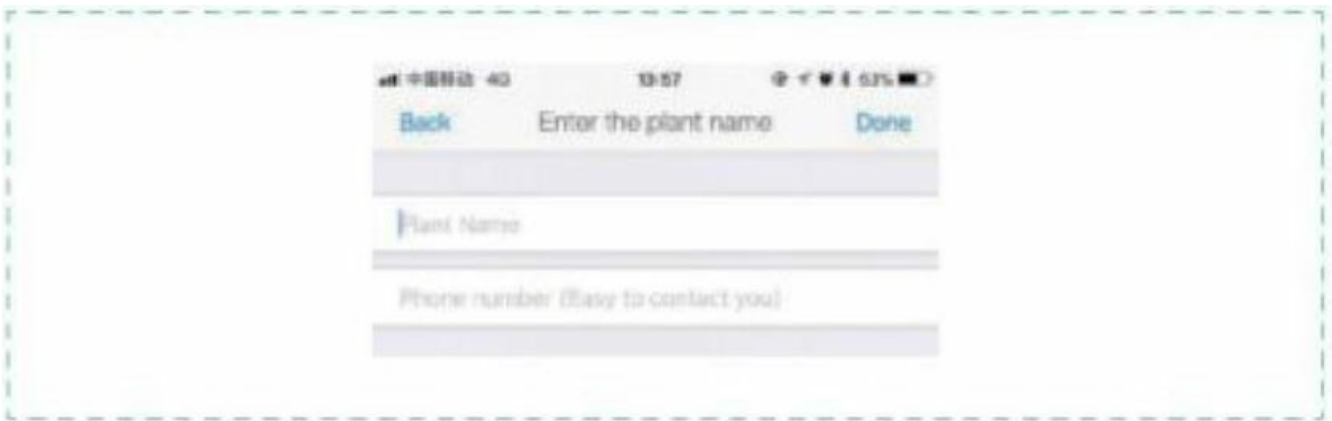
## 2. Enter installation information

1. Confirm the location of the installation (The GPS function will automatically determine the location; if you want to change it, click on the map icon and enter the address manually in the b field)
2. Select the type of installation
3. Select the type of network
4. Specify the capacity of the installation (In the other empty fields, you can leave the values at the defaults, since the application takes local values for energy prices and surcharges)

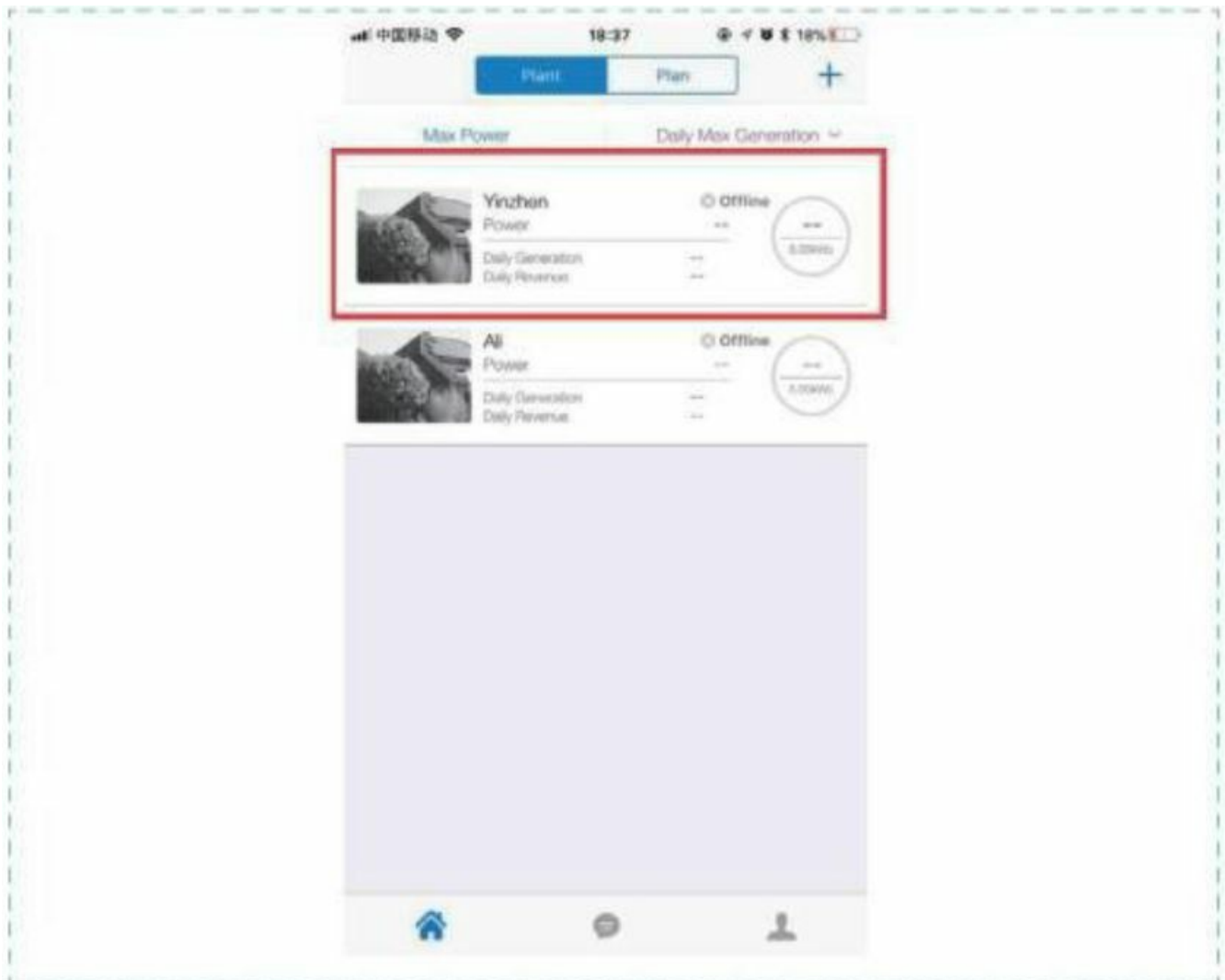


## 3. Enter the name of the installation

We recommend that you create the name of the installation according to the scheme "location + name + capacity" (e.g., Wuxi IGEN 8.1 KW), then confirm by clicking [Done].

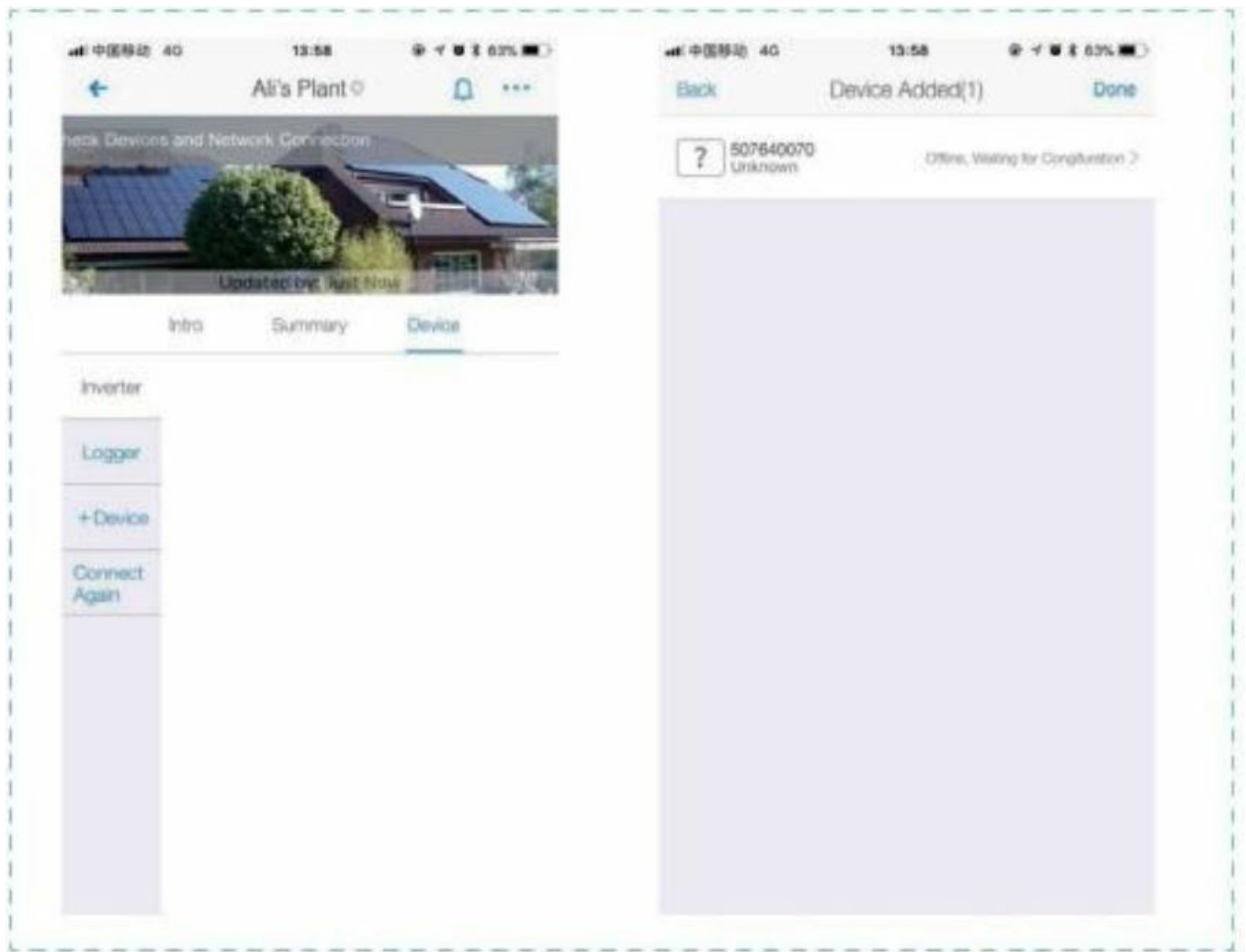


4. Now the new installation will be visible on the home page.



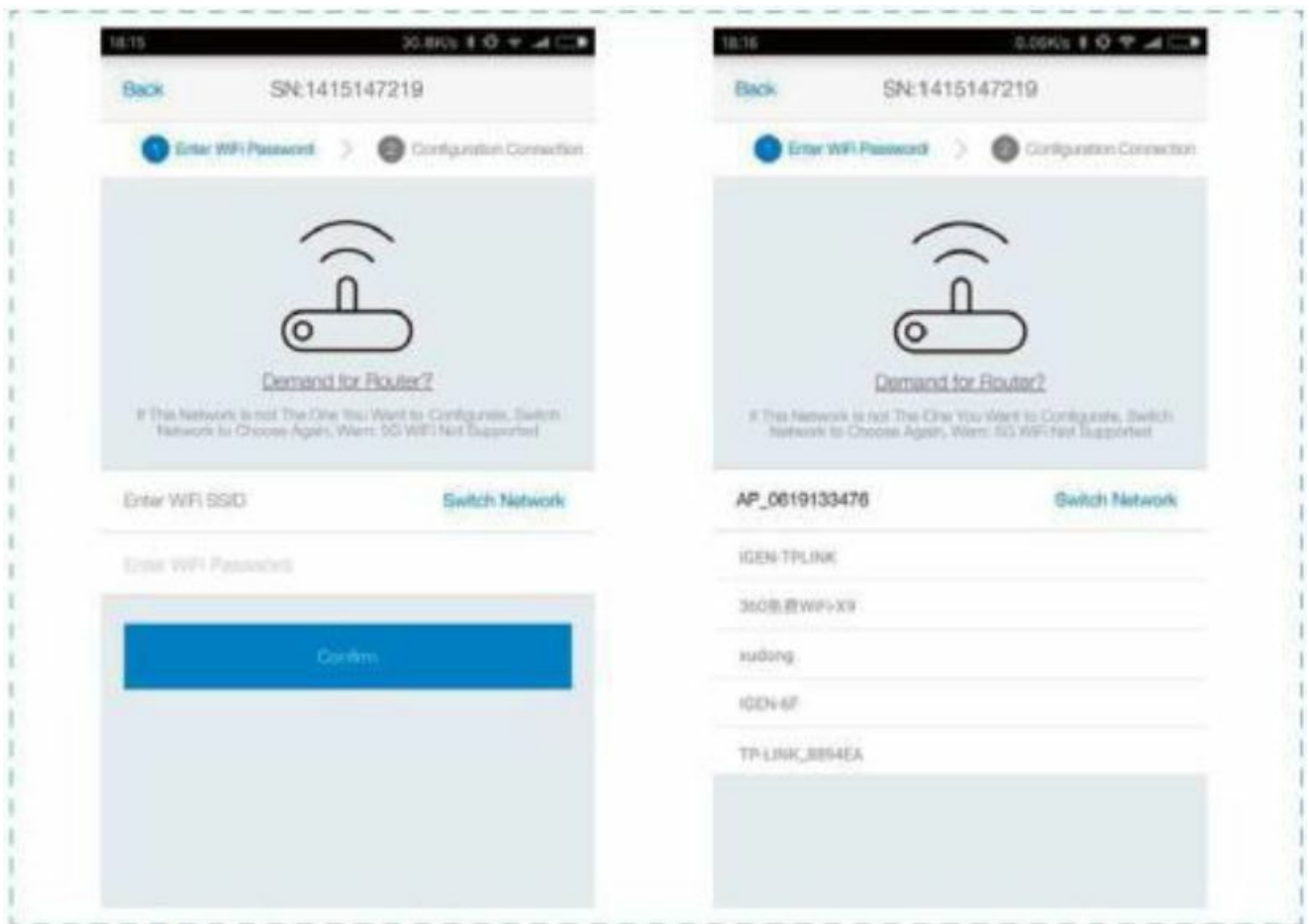
## WiFi connection setup

Select the installation and choose the Connect Again option in the devices [Device] tab. Select the device and click [Done] to proceed to the next step.



### Configuration for Android users

1. The application will automatically detect the connection to the WiFi network, just enter the WiFi password to continue the configuration. If the wrong network is selected, select [switch network] and search or manually enter the network ID.

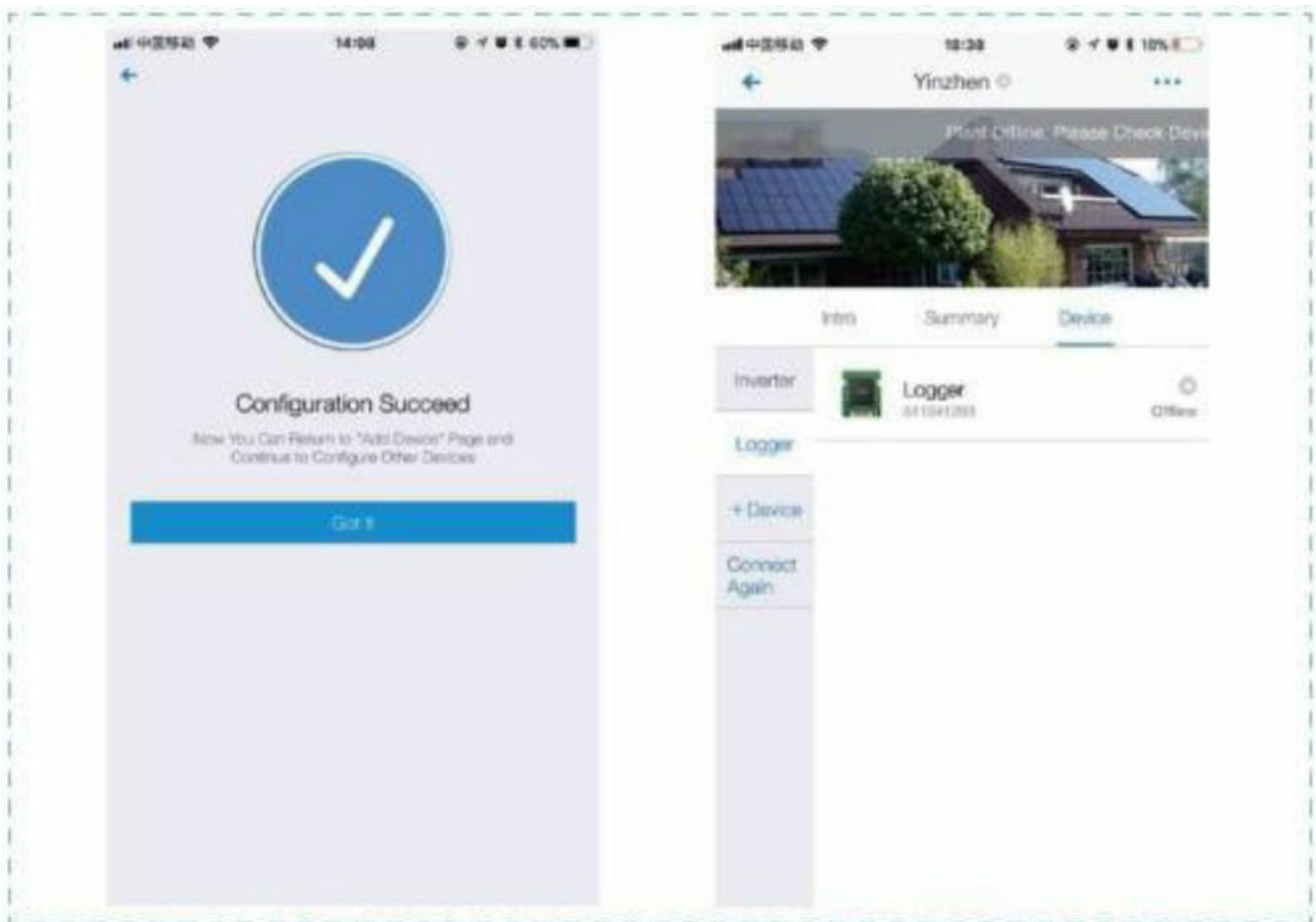


2. The connection will be automatically established under successful login into the network.



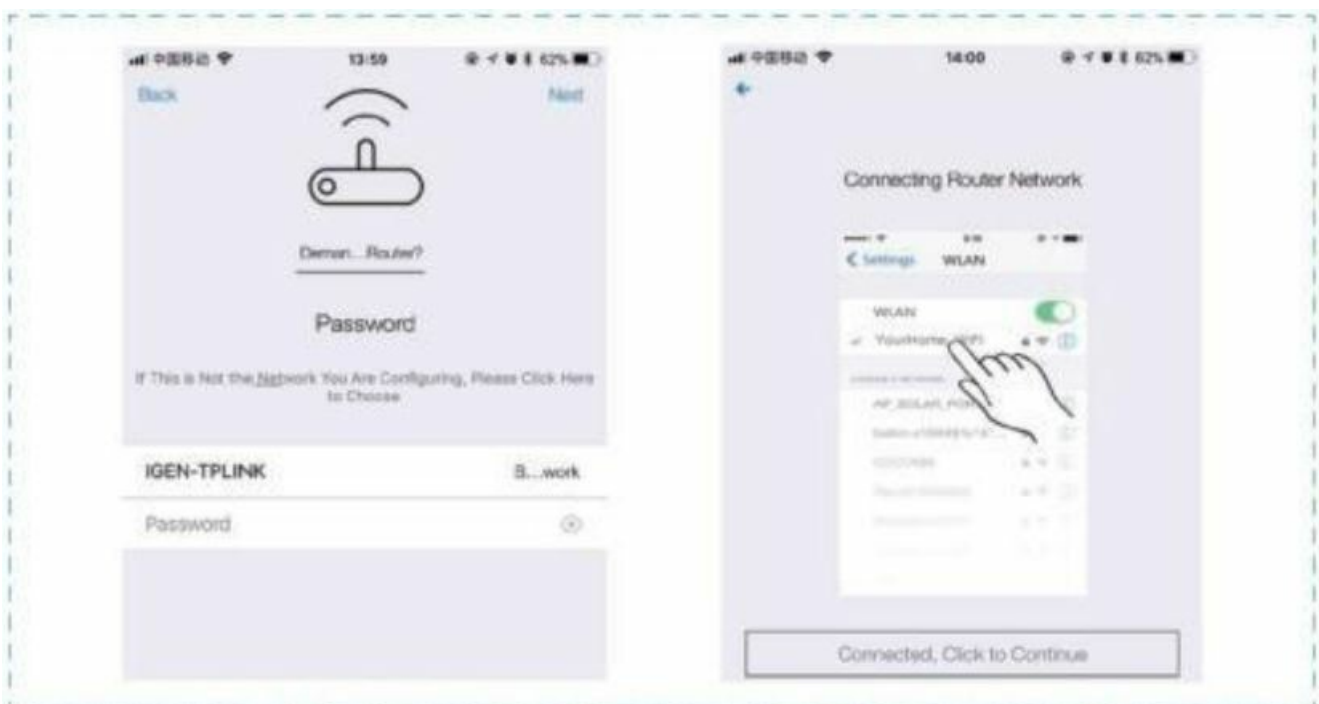
3. Usually, the setup takes 3-5 minutes. Then return to the [Device] tab and click the [+Device] option to add more devices.





#### Configuraja for iOS users

1. The application will automatically detect the connection to the WiFi network, just enter the WiFi password to continue the configuration. If the wrong network is selected, select [switch network] and search or manually enter the network ID.



2. Go to the network settings interface on your iPhone [Network Settings], and select the network number AP\_XXXXX(S/N) of the data logger. Then, go back to the SOLARMAN app, the logger will start configuration.

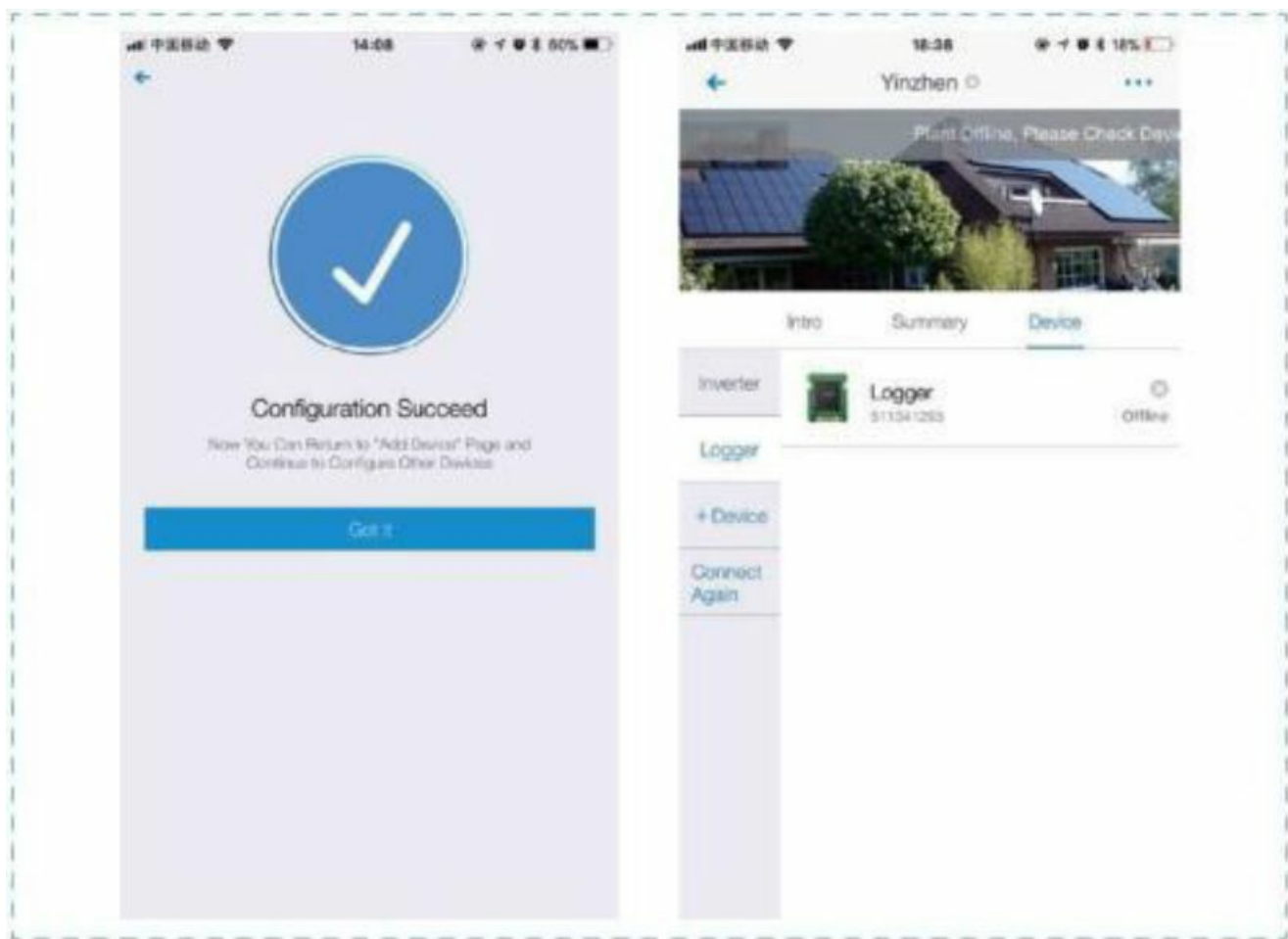




### Note

If the network with the ID according to the scheme AP\_XXXXX(S/N) cannot be found in the list of wireless networks, please reduce the distance between WiFi routers and the DVR to less than 10 meters. Otherwise, a connection error may occur, if you have followed the above recommendation and the AP\_XXXXX network is still not available, please refer to the Data Recorder Manual to identify the error, or contact our Customer Service.

- Usually, the setup takes 3-5 minutes. Then return to the [Device] tab and click the [+Device] option to add more devices.




**If the configuration fails, the reasons may be as follows:**

1. Wrong router password. Click [Retry] and verify that the correct password has been entered.
2. Poor network signal of the router, the data logger is too far from the router. Please reduce the distance between the router and the data logger.
3. You clicked too quickly when logging in to the DVR AP. Please wait a few seconds after the connection is established before proceeding to the DVR configuration.

**In the situations listed below, you will be required to reconfigure the DVR network:**

1. Router replacement
2. WiFi password change
3. Changing the router's SSID
4. Company routers may limit WiFi connection.

## Documents / Resources

	<p><a href="#">SOLARMAN Solarman Application</a> [pdf] User Guide Solarman Application, Solarman, Application</p>
---	---