




# SOLARIS Flare LR Q+ Strobe and Blinder Lighting User Guide

[Home](#) » [SOLARIS](#) » SOLARIS Flare LR Q+ Strobe and Blinder Lighting User Guide 

## SOLARIS Flare LR Q+ Strobe and Blinder Lighting User Guide



### Contents

- 1 **SETUP**
- 2 **UNPACKING INSTRUCTIONS**
- 3 **POWER REQUIREMENTS**
- 4 **RIGGING SOLARIS FLARE Q+ LR**
- 5 **SOLARIS FLARE Q+ LR ATTACHABLE FEET**
- 6 **NAVIGATION OVERVIEW**
- 7 **MENU MAP**
- 8 **FLARE Q+ LR PIXEL MAP**
- 9 **BASIC CONTROL MODES**
- 10 **STROBE MODES**
- 11 **ADVANCED RGB STROBE MODES**
- 12 **RDM SENSORS AND FUNCTIONS**
- 13 **LIMITED WARRANTY**
- 14 **CONTACT INFORMATION**
- 15 **Documents / Resources**
  - 15.1 **References**
- 16 **Related Posts**

## SETUP

## SAFETY INSTRUCTIONS



Please read these instructions carefully. This user guide contains important information about the installation, usage, and maintenance of this product

- Keep this Quick Start Guide for future reference. If unit is sold to another user, make sure they also receive this instruction booklet.
- Ensure the unit is connected to proper voltage, and that line voltage is not higher than that stated on the device.
- Make sure there are no flammable materials close to the unit while operating.
- Always disconnect from the power source before servicing or fuse replacement. Always use the fuse specified in this manual.
- Maximum ambient temperature (Ta) is 40°C (104°F). Do not operate unit at temperatures above this rating.
- In the event of a serious operating problem, stop using the unit immediately. Repairs must be carried out by trained, authorized personnel. Contact the nearest authorized technical assistance center. Only OEM spare parts should be used.
- Do not connect the device to a dimmer pack.
- Make sure power cord is never crimped or damaged.
- Never disconnect power cord by pulling or tugging on the cord.

**Caution!** There are no user serviceable parts inside the unit. Do not open the housing or attempt any repairs yourself. In the unlikely event your unit may require service, please contact your distributor.

## UNPACKING INSTRUCTIONS

Upon receipt of the unit, carefully unpack the carton and check the contents to ensure that all parts are present and in good condition. Notify the shipper immediately and retain packing material for inspection if any parts appear to be damaged from shipping or if the carton itself shows signs of mishandling. Save the carton and all packing materials. In the event that a unit must be returned to the factory, it is important that it be returned in the original factory box and packing.

## POWER REQUIREMENTS

Before powering the unit, make sure the line voltage is within the range of accepted voltages. This unit accommodates 100-240VAC, 50/60Hz. All units must be powered directly from a switched circuit and cannot be operated with a rheostat (variable resistor) or dimmer circuit, even if the rheostat or dimmer channel is used solely for a 0-100% switch.

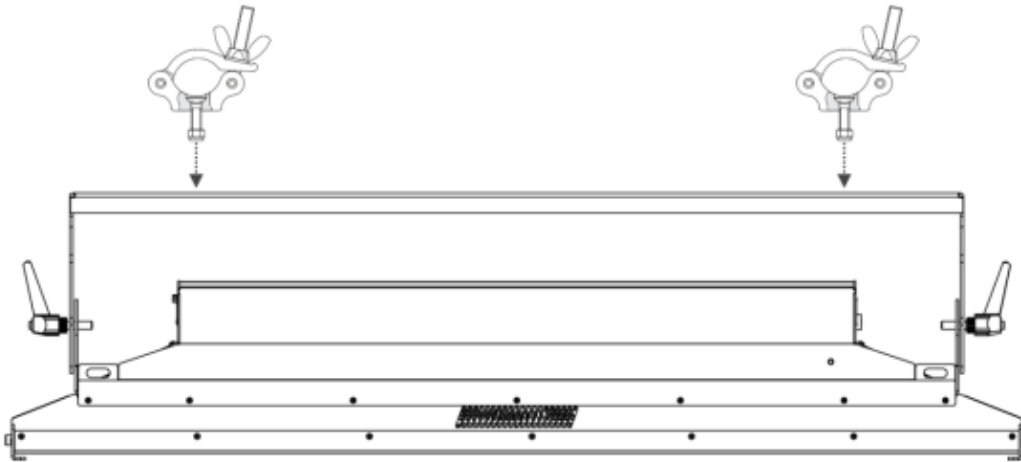
## RIGGING SOLARIS FLARE Q+ LR



Always consult a certified rigging specialist before suspending any device overhead.

Solaris Flare Q+ LR weighs approx. 24.3 lbs (11 kg) and requires multiple attachment points for safety. Use ProBurger® couplers or equivalent C- or O-type clamps for attaching to truss, rated for fixture weight. After establishing the desired position, tighten all appropriate bolts.

- Always use safety cables!
- When selecting installation location, consider routine maintenance.
- Team lift the fixture into mounting location, never try to mount fixture with one person.
- Never mount fixture where it will be exposed to excess moisture, high humidity, extreme temperatures, or restricted ventilation for long periods of time



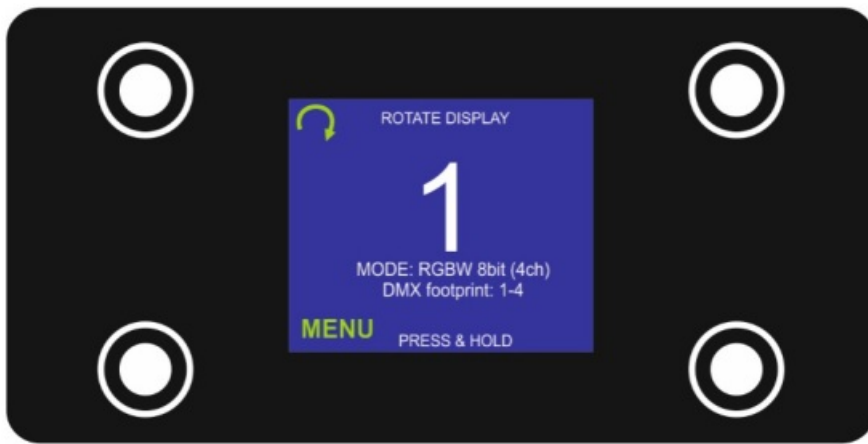
## SOLARIS FLARE Q+ LR ATTACHABLE FEET

Solaris Flare Q+ LR has optional feet attachments which allow for floor mounting applications. The PreSet™ Yoke automatically snaps to 15° increments from -45° to +135° for ease of use and focusing.

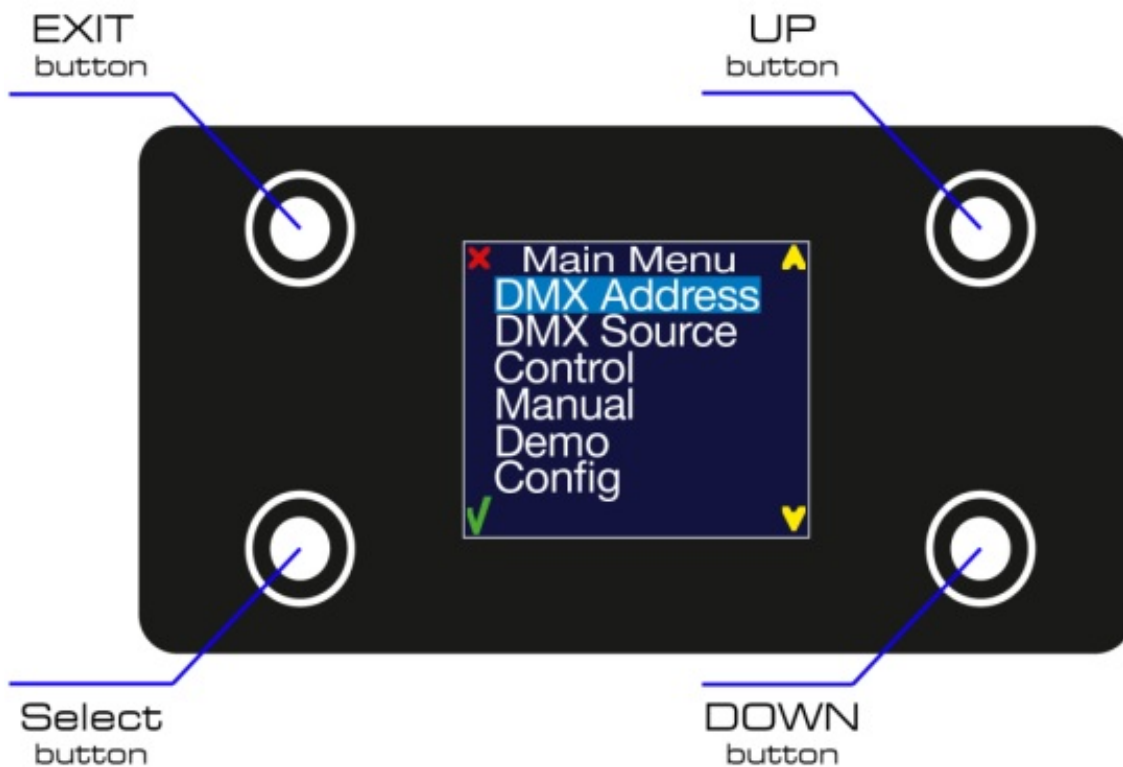


## NAVIGATION OVERVIEW

The default menu display shows the current DMX address, mode and footprint, as well as the option to rotate the screen and enter further menu options. Four control panel buttons are located near each corner of the LCD Display.



Press and hold the **<MENU>** button to scroll through the top-level menu items. Use the **UP** and **DOWN** buttons, located to the right of the LCD screen, to navigate the menu map and menu options. Press the **<✓>** button to access the menu function currently displayed or to enable a menu option. To return to the top of the menu map or menu without changing the value, press the **<X>** button.



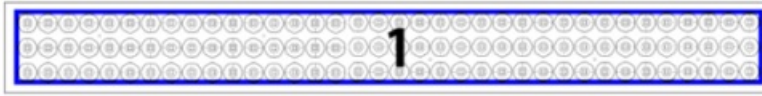
## MENU MAP

- 
- ```

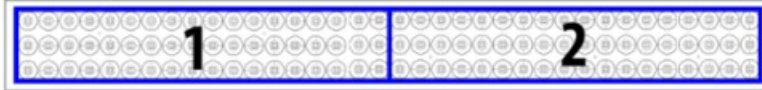
graph TD
    DMX[DMX Address] --> Control[Control]
    DMX --> 1_512[1-512]
    Control --> Basic[Basic]
    Control --> Advanced[Advanced]
    Basic --> RGB8[RGB 8 bit]
    Basic --> RGB16[RGB 16b bit]
    Basic --> RGBW8[RGBW 8 bit]
    Basic --> RGBW16[RGBW 16 bit]
    Basic --> StrobeOnly[Strobe Only]
    Basic --> RGBStrobe[RGB Strobe]
    Basic --> RGBWStrobe[RGBW Strobe]
    Advanced --> 1[1]
    1 --> 2V_2H[2V, 2H]
    1 --> 3_4[3, 4]
    1 --> 6V_6H[6V, 6H]
    1 --> 12[12]
    Manual[Manual] --> WashColor[Wash Color]
    WashColor --> Red0_255[Red 0-255]
    WashColor --> Green0_255[Green 0-255]
    WashColor --> Blue0_255[Blue 0-255]
    WashColor --> White0_255[White 0-255]
    Manual --> StrobeColor[Strobe Color]
    StrobeColor --> Red0_255_2[Red 0-255]
    StrobeColor --> Green0_255_2[Green 0-255]
    StrobeColor --> Blue0_255_2[Blue 0-255]
    StrobeColor --> White0_255_2[White 0-255]
    Manual --> StrobeControl[Strobe Control]
    StrobeControl --> Intensity0_255[Intensity 0-255]
    StrobeControl --> Duration0_255[Duration 0-255]
    StrobeControl --> Rate0_255[Rate 0-255]
    StrobeControl --> FX0_255[FX 0-255]
    Manual --> Save[Save]
    Demo[Demo] --> Demo1[Demo 1]
    Demo --> Demo2[Demo 2]
    Demo --> Demo3[Demo 3]
    Demo --> Demo4[Demo 4]
    Demo --> Demo5[Demo 5]
    Demo --> Demo6[Demo 6]
    Demo --> Demo7[Demo 7]
    Demo --> Demo8[Demo 8]
    Demo --> Demo9[Demo 9]
    Demo --> Demo10[Demo 10]
    Demo --> Demo11[Demo 11]
    Demo --> Demo12[Demo 12]
    Demo --> Demo13[Demo 13]
    Demo --> Demo14[Demo 14]
    Demo --> Demo15[Demo 15]
    Demo --> Demo16[Demo 16]
    Demo --> Demo17[Demo 17]
    Demo --> Demo18[Demo 18]
    Demo --> Demo19[Demo 19]
    Demo --> Demo20[Demo 20]
    Demo --> Demo21[Demo 21]
    Demo --> Auto[Auto]
    Config[Config] --> DMXLOSS[DMX LOSS]
    DMXLOSS --> HOLD[HOLD]
    Config --> Fan[Fan]
    Fan --> AUTO[AUTO]
    Config --> Display[Display]
    Display --> ON_10s_30s[ON, 10s, 30s]
    Config --> FadeTime[Fade Time]
    FadeTime --> OFF[OFF]
    OFF --> SmartFade[Smart Fade]
    SmartFade --> FixedFade[Fixed Fade]
    FixedFade --> 0_2_5[0-2.5 sec]
    Config --> Gamma[Gamma]
    Gamma --> Gamma8[Gamma 8]
    Gamma8 --> 1_0_5_0[1.0-5.0]
    Gamma --> Gamma16[Gamma 16]
    Config --> AsyncStrobe[Async Strobe]
    AsyncStrobe --> ON_OFF[ON, OFF]
    Config --> Thermometer[Thermometer]
    Thermometer --> C_F[°C °F]
    Config --> Upload[Upload]
    Upload --> Password[Password]
    Config --> LineFreq[Line Freq]
    LineFreq --> 50_60Hz[50/60Hz]
    Config --> Reset[Reset]
    Reset --> NO[NO]
  
```

- 3-pixel unit – 3 groups of 36 LEDs
- 4-pixel unit – 4 groups of 27 LEDs
- 6-pixel unit – 6 groups of 18 LEDs
- 12-pixel unit – 12 groups of 9 LEDs

1 pixel



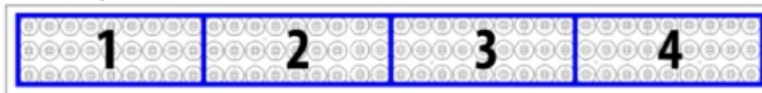
2 pixel



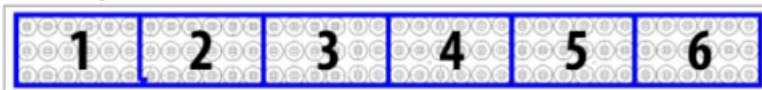
3 pixel



4 pixel



6 pixel



12 pixel



**Note!** Each mode can be inverted when last pixel becomes the first.

## BASIC CONTROL MODES

Basic control modes for RGB and RGBW control the Flare Q+ LR as 1-pixel mode for color wash applications.

| Mode         | Channel | DMX values | Preset  | Function                 |
|--------------|---------|------------|---------|--------------------------|
| RGB<br>8bit  | 1       | 0 – 255    | 0 – 100 | Red Intensity            |
|              | 2       | 0 – 255    | 0 – 100 | Green Intensity          |
|              | 3       | 0 – 255    | 0 – 100 | Blue Intensity           |
| RGB<br>16bit | 1       | 0 – 255    | 0 – 100 | Red Intensity HI Byte    |
|              | 2       | 0 – 255    | 0 – 100 | Red Intensity LOW Byte   |
|              | 3       | 0 – 255    | 0 – 100 | Green Intensity HI Byte  |
|              | 4       | 0 – 255    | 0 – 100 | Green Intensity LOW Byte |
|              | 5       | 0 – 255    | 0 – 100 | Blue Intensity HI Byte   |
|              | 6       | 0 – 255    | 0 – 100 | Blue Intensity LOW Byte  |

| Mode          | Channel | DMX values | Preset  | Function                 |
|---------------|---------|------------|---------|--------------------------|
| RGBW<br>8bit  | 1       | 0 – 255    | 0 – 100 | Red Intensity            |
|               | 2       | 0 – 255    | 0 – 100 | Green Intensity          |
|               | 3       | 0 – 255    | 0 – 100 | Blue Intensity           |
|               | 4       | 0 – 255    | 0 – 100 | White Intensity          |
| RGBW<br>16bit | 1       | 0 – 255    | 0 – 100 | Red Intensity HI Byte    |
|               | 2       | 0 – 255    | 0 – 100 | Red Intensity LOW Byte   |
|               | 3       | 0 – 255    | 0 – 100 | Green Intensity HI Byte  |
|               | 4       | 0 – 255    | 0 – 100 | Green Intensity LOW Byte |
|               | 5       | 0 – 255    | 0 – 100 | Blue Intensity HI Byte   |
|               | 6       | 0 – 255    | 0 – 100 | Blue Intensity LOW Byte  |
|               | 7       | 0 – 255    | 0 – 100 | White Intensity HI Byte  |
|               | 8       | 0 – 255    | 0 – 100 | White Intensity LOW Byte |

## STROBE MODES



|                  |   |         |         |                  |
|------------------|---|---------|---------|------------------|
| Strobe Only Mode | 1 | 0 – 255 | 0 – 100 | Strobe Intensity |
|                  | 2 | 0 – 255 | 0 – 100 | Strobe Duration  |
|                  | 3 | 0 – 255 | 0 – 100 | Strobe Rate      |
|                  | 4 | 0 – 255 | 0 – 100 | Strobe FX        |

### Strobe Value Breakdown:

| DMX Value | DMX Percent | Strobe Intensity                           |
|-----------|-------------|--------------------------------------------|
| 0 – 5     | 0 – 2       | Blackout                                   |
| 6 – 255   | 3 – 100     | Intensity level                            |
|           |             | Strobe Duration                            |
| 0 – 254   | 0 – 99      | 0 – 650ms (50Hz AC)                        |
| 255       | 100         | HYPER                                      |
|           |             | Strobe Rate                                |
| 0 – 5     | 0 – 2       | No flash                                   |
| 6 – 255   | 3 – 100     | 0.5 – 25Hz (50Hz AC); 0.6 – 30Hz (60Hz AC) |
|           |             | Strobe effects                             |

|           |          |                                                                      |
|-----------|----------|----------------------------------------------------------------------|
| 0 – 4     | 0 – 2    | No effect                                                            |
| 5         | 3        | Wash Override (only available in RGB Strobe and RGBW Strobe modes) 1 |
| 6 – 42    | 4 -16    | Ramp up                                                              |
| 43 – 85   | 17 – 33  | Ramp down                                                            |
| 86 – 128  | 34 – 50  | Ramp up – down                                                       |
| 129 – 171 | 51 – 67  | Random                                                               |
| 172 – 214 | 68 – 84  | Lighting                                                             |
| 215 – 240 | 85 – 92  | Spikes                                                               |
| 241 – 245 | 93 – 95  | Burst (use Rate at full) 2                                           |
| 246 – 250 | 96 – 98  | “Meltdown” Random Pixels w/ Solid Background 3                       |
| 251 – 255 | 99 – 100 | “Meltdown” Random Pixels w/ Burst Background4                        |

| Mode | Channel | DMX Value | Percent | Function               |
|------|---------|-----------|---------|------------------------|
|      | 1       | 0 – 255   | 0 – 100 | Red Strobe Intensity   |
|      | 2       | 0 – 255   | 0 – 100 | Green Strobe Intensity |
|      |         |           |         |                        |

|                |   |         |         |                        |
|----------------|---|---------|---------|------------------------|
| RGB<br>Strobe  | 3 | 0 – 255 | 0 – 100 | Blue Strobe Intensity  |
|                | 4 | 0 – 255 | 0 – 100 | Strobe Intensity       |
|                | 5 | 0 – 255 | 0 – 100 | Strobe Duration        |
|                | 6 | 0 – 255 | 0 – 100 | Strobe Rate            |
|                | 7 | 0 – 255 | 0 – 100 | Strobe FX              |
| RGBW<br>Strobe | 1 | 0 – 255 | 0 – 100 | Red Strobe Intensity   |
|                | 2 | 0 – 255 | 0 – 100 | Green Strobe Intensity |
|                | 3 | 0 – 255 | 0 – 100 | Blue Strobe Intensity  |
|                | 4 | 0 – 255 | 0 – 100 | White Strobe Intensity |
|                | 5 | 0 – 255 | 0 – 100 | Strobe Intensity       |
|                | 6 | 0 – 255 | 0 – 100 | Strobe Duration        |
|                | 7 | 0 – 255 | 0 – 100 | Strobe Rate            |
|                | 8 | 0 – 255 | 0 – 100 | Strobe FX              |

## ADVANCED RGB STROBE MODES

RGBW PIXEL MODE 11 RGBW PIXEL MODE 213 RGBW PIXEL MODE 317 RGBW PIXEL MODE 421 RGBW  
PIXEL MODE 625 RGBW PIXEL MODE 1233

| PIXEL MODE           | CHANNEL | DMX VALUE | PERCENT | FUNCTION               |
|----------------------|---------|-----------|---------|------------------------|
| RGB PIXEL M<br>ODE 1 | 1       | 0 – 255   | 0 – 100 | Red Strobe Intensity   |
|                      | 2       | 0 – 255   | 0 – 100 | Green Strobe Intensity |
|                      | 3       | 0 – 255   | 0 – 100 | Blue Strobe Intensity  |
|                      | 4       | 0 – 255   | 0 – 100 | Strobe Intensity       |
|                      | 5       | 0 – 255   | 0 – 100 | Strobe Duration        |
|                      | 6       | 0 – 255   | 0 – 100 | Strobe Rate            |
|                      | 7       | 0 – 255   | 0 – 100 | Strobe FX              |
|                      | 8       | 0 – 255   | 0 – 100 | 1 pix Red intensity    |
|                      | 9       | 0 – 255   | 0 – 100 | 1 pix Green intensity  |
|                      | 10      | 0 – 255   | 0 – 100 | 1 pix Blue intensity   |
| RGB PIXEL M<br>ODE 2 | 11      | 0 – 255   | 0 – 100 | 2 pix Red intensity    |
|                      | 12      | 0 – 255   | 0 – 100 | 2 pix Green intensity  |
|                      | 13      | 0 – 255   | 0 – 100 | 2 pix Blue intensity   |
|                      |         |           |         |                        |

|                      |    |         |         |                       |
|----------------------|----|---------|---------|-----------------------|
| RGB PIXEL M<br>ODE 3 | 14 | 0 – 255 | 0 – 100 | 3 pix Red intensity   |
|                      | 15 | 0 – 255 | 0 – 100 | 3 pix Green intensity |
|                      | 16 | 0 – 255 | 0 – 100 | 3 pix Blue intensity  |
| RGB PIXEL M<br>ODE 4 | 17 | 0 – 255 | 0 – 100 | 4 pix Red intensity   |
|                      | 18 | 0 – 255 | 0 – 100 | 4 pix Green intensity |
|                      | 19 | 0 – 255 | 0 – 100 | 4 pix Blue intensity  |
| RGB PIXEL M<br>ODE 6 | 20 | 0 – 255 | 0 – 100 | 5 pix Red intensity   |
|                      | 21 | 0 – 255 | 0 – 100 | 5 pix Green intensity |
|                      | 22 | 0 – 255 | 0 – 100 | 5 pix Blue intensity  |
|                      | 23 | 0 – 255 | 0 – 100 | 6 pix Red intensity   |
|                      | 24 | 0 – 255 | 0 – 100 | 6 pix Green intensity |
|                      | 25 | 0 – 255 | 0 – 100 | 6 pix Blue intensity  |
|                      |    |         |         |                       |
|                      | 26 | 0 – 255 | 0 – 100 | 7 pix Red intensity   |
|                      | 27 | 0 – 255 | 0 – 100 | 7 pix Green intensity |
|                      |    |         |         |                       |

|    |         |         |                        |
|----|---------|---------|------------------------|
| 28 | 0 – 255 | 0 – 100 | 7 pix Blue intensity   |
| 29 | 0 – 255 | 0 – 100 | 8 pix Red intensity    |
| 30 | 0 – 255 | 0 – 100 | 8 pix Green intensity  |
| 31 | 0 – 255 | 0 – 100 | 8 pix Blue intensity   |
| 32 | 0 – 255 | 0 – 100 | 9 pix Red intensity    |
| 33 | 0 – 255 | 0 – 100 | 9 pix Green intensity  |
| 34 | 0 – 255 | 0 – 100 | 9 pix Blue intensity   |
| 35 | 0 – 255 | 0 – 100 | 10 pix Red intensity   |
| 36 | 0 – 255 | 0 – 100 | 10 pix Green intensity |
| 37 | 0 – 255 | 0 – 100 | 10 pix Blue intensity  |
| 38 | 0 – 255 | 0 – 100 | 11 pix Red intensity   |
| 39 | 0 – 255 | 0 – 100 | 11 pix Green intensity |
| 40 | 0 – 255 | 0 – 100 | 11 pix Blue intensity  |
| 41 | 0 – 255 | 0 – 100 | 12 pix Red intensity   |

|         |         |                      |                        |
|---------|---------|----------------------|------------------------|
| 42      | 0 – 255 | 0 – 100              | 12 pix Green intensity |
| 43      | 0 – 255 | 0 – 100              | 12 pix Blue intensity  |
| 0 – 255 | 0 – 100 | Red Strobe Intensity |                        |
| 2       | 0 – 255 | 0 – 100              | Green Strobe Intensity |
| 3       | 0 – 255 | 0 – 100              | Blue Strobe Intensity  |
| 4       | 0 – 255 | 0 – 100              | White Strobe Intensity |
| 5       | 0 – 255 | 0 – 100              | Strobe Intensity       |
| 6       | 0 – 255 | 0 – 100              | Strobe Duration        |
| 7       | 0 – 255 | 0 – 100              | Strobe Rate            |
| 8       | 0 – 255 | 0 – 100              | Strobe FX              |
| 9       | 0 – 255 | 0 – 100              | 1 pix Red intensity    |
| 10      | 0 – 255 | 0 – 100              | 1 pix Green intensity  |
| 11      | 0 – 255 | 0 – 100              | 1 pix Blue intensity   |
| 12      | 0 – 255 | 0 – 100              | 1 pix White intensity  |
|         |         |                      |                        |

RGB PIXEL M  
ODE 12

|         |         |                     |                       |
|---------|---------|---------------------|-----------------------|
| 0 – 255 | 0 – 100 | 2 pix Red intensity |                       |
| 14      | 0 – 255 | 0 – 100             | 2 pix Green intensity |
| 15      | 0 – 255 | 0 – 100             | 2 pix Blue intensity  |
| 16      | 0 – 255 | 0 – 100             | 2 pix White intensity |
| 0 – 255 | 0 – 100 | 3 pix Red intensity |                       |
| 18      | 0 – 255 | 0 – 100             | 3 pix Green intensity |
| 19      | 0 – 255 | 0 – 100             | 3 pix Blue intensity  |
| 20      | 0 – 255 | 0 – 100             | 3 pix White intensity |
| 0 – 255 | 0 – 100 | 4 pix Red intensity |                       |
| 22      | 0 – 255 | 0 – 100             | 4 pix Green intensity |
| 23      | 0 – 255 | 0 – 100             | 4 pix Blue intensity  |
| 24      | 0 – 255 | 0 – 100             | 4 pix White intensity |
| 0 – 255 | 0 – 100 | 5 pix Red intensity |                       |
| 26      | 0 – 255 | 0 – 100             | 5 pix Green intensity |



|         |         |                     |                       |
|---------|---------|---------------------|-----------------------|
| 27      | 0 – 255 | 0 – 100             | 5 pix Blue intensity  |
| 28      | 0 – 255 | 0 – 100             | 5 pix White intensity |
| 29      | 0 – 255 | 0 – 100             | 6 pix Red intensity   |
| 30      | 0 – 255 | 0 – 100             | 6 pix Green intensity |
| 31      | 0 – 255 | 0 – 100             | 6 pix Blue intensity  |
| 32      | 0 – 255 | 0 – 100             | 6 pix White intensity |
| 0 – 255 | 0 – 100 | 7 pix Red intensity |                       |
| 34      | 0 – 255 | 0 – 100             | 7 pix Green intensity |
| 35      | 0 – 255 | 0 – 100             | 7 pix Blue intensity  |
| 36      | 0 – 255 | 0 – 100             | 7 pix White intensity |
| 37      | 0 – 255 | 0 – 100             | 8 pix Red intensity   |
| 38      | 0 – 255 | 0 – 100             | 8 pix Green intensity |
| 39      | 0 – 255 | 0 – 100             | 8 pix Blue intensity  |
| 40      | 0 – 255 | 0 – 100             | 8 pix White intensity |
|         |         |                     |                       |

|    |         |         |                        |
|----|---------|---------|------------------------|
| 41 | 0 – 255 | 0 – 100 | 9 pix Red intensity    |
| 42 | 0 – 255 | 0 – 100 | 9 pix Green intensity  |
| 43 | 0 – 255 | 0 – 100 | 9 pix Blue intensity   |
| 44 | 0 – 255 | 0 – 100 | 9 pix White intensity  |
| 45 | 0 – 255 | 0 – 100 | 10 pix Red intensity   |
| 46 | 0 – 255 | 0 – 100 | 10 pix Green intensity |
| 47 | 0 – 255 | 0 – 100 | 10 pix Blue intensity  |
| 48 | 0 – 255 | 0 – 100 | 10 pix White intensity |
| 49 | 0 – 255 | 0 – 100 | 11 pix Red intensity   |
| 50 | 0 – 255 | 0 – 100 | 11 pix Green intensity |
| 51 | 0 – 255 | 0 – 100 | 11 pix Blue intensity  |
| 52 | 0 – 255 | 0 – 100 | 11 pix White intensity |
| 53 | 0 – 255 | 0 – 100 | 12 pix Red intensity   |
| 54 | 0 – 255 | 0 – 100 | 12 pix Green intensity |

|  |    |         |         |                        |
|--|----|---------|---------|------------------------|
|  | 55 | 0 – 255 | 0 – 100 | 12 pix Blue intensity  |
|  | 56 | 0 – 255 | 0 – 100 | 12 pix White intensity |

## RDM SENSORS AND FUNCTIONS

Solaris Flare Q+ LR can be operated via Remote Device Management (RDM) that will assist with fixture setup and maintenance.

| PID                                   | Name                     |
|---------------------------------------|--------------------------|
| <i>Category – Status Collection</i>   |                          |
| 0x0020                                | QUEUED_MESSAGE           |
| <i>Category – RDM Information</i>     |                          |
| 0x0050                                | SUPPORTED_PARAMETERS     |
| 0x0051                                | PARAMETER_DESCRIPTION    |
| <i>Category – Product Information</i> |                          |
| 0x0060                                | DEVICE_INFO              |
| 0x0080                                | DEVICE_MODEL_DESCRIPTION |
| 0x0081                                | MANUFACTURER_LABEL       |
| 0x0082                                | DEVICE_LABEL             |

|                                |                             |
|--------------------------------|-----------------------------|
| 0x0090                         | FACTORY_DEFAULTS            |
| 0x00C0                         | SOFTWARE_VERSION_LABEL      |
| <i>Category – DMX512 Setup</i> |                             |
| 0x00E0                         | DMX_PERSONALITY             |
|                                | DMX_PERSONALITY_DESCRIPTION |
| 0x00F0                         | DMX_START_ADDRESS           |
| <i>Category – Sensors</i>      |                             |
| 0x0200                         | SENSOR_DEFINITION           |
| 0x0201                         | SENSOR_VALUE                |
| 0x0202                         | RECORD_SENSORS              |
| <i>Category – Control</i>      |                             |
| 0x1000                         | IDENTIFY_DEVICE             |
| 0x1001                         | RESET_DEVICE                |

## LIMITED WARRANTY

Solaris fixtures are warranted by TMB against defective materials or workmanship for a period of two (2) years from the date of original sale by TMB.

TMB's warranty shall be restricted to the repair or replacement of any part that proves to be defective and for which a claim is submitted to TMB before the expiration of the applicable warranty periods.

This Limited Warranty is void if the defects of the Product are the result of:

- Opening the casing, repair, or adjustment by anyone other than TMB or persons specifically authorized by TMB
- Accident, physical abuse, mishandling, or misapplication of the product.
- Damage due to lightning, earthquake, flood, terrorism, war, or act of God.

TMB will not assume responsibility for any labor expended, or materials used, to replace and/or repair the Product without TMB's prior written authorization. Any repair of the Product in the field, and any associated labor charges, must be authorized in advance by TMB. Freight costs on warranty repairs are split 50/50: Customer pays to ship defective product to TMB; TMB pays to ship repaired product, ground freight, back to Customer.

This warranty does not cover consequential damages or costs of any kind.

A Return Merchandise Authorization (RMA) Number must be obtained from TMB prior to return of any defective merchandise for warranty or non-warranty repair. For all repairs please contact TMB Tech Support Repair using the contact information below or email [TechSupportRepairNA@tmb.com](mailto:TechSupportRepairNA@tmb.com).

## **US**

527 Park Ave  
San Fernando, CA 91340  
Tel: +1 818.899.8818  
Fax: +1 818.899.8813  
[tmb-info@tmb.com](mailto:tmb-info@tmb.com)  
[www.tmb.com](http://www.tmb.com)

## **UK**

21 Armstrong Way  
Southall, UB2 4SD England  
Tel: +44 (0)20.8574.9700  
Fax: +44 (0)20.8574.9701  
[tmb-info@tmb.com](mailto:tmb-info@tmb.com)  
[www.tmb.com](http://www.tmb.com)

Solaris Flare LR Q+ Quick Start Guide  
Solaris-Flare-LRQ+QSG-v1.0  
Effective 14 April 2021

© Copyright 2021, TMB

All rights reserved

TMB authorizes its customers to download and print this electronically published Quick Start Guide for professional use only.

TMB prohibits reproduction, modification or distribution of this document for any other purposes, without express written consent.

Specifications are subject to change without notice. The information in this document supersedes all previously supplied information before the effective date listed above. TMB has confidence in the accuracy of the document information herein but assumes no responsibility or liability for any loss occurring as a direct or indirect result of

errors or exclusions whether by accident or any other cause.

## CONTACT INFORMATION

### LOS ANGELES HEADQUARTERS

527 Park Avenue | San Fernando, CA 91340, USA

Tel: +1 818.899.8818 | Fax: +1 818.899.8813

[sales@tmb.com](mailto:sales@tmb.com)

### TMB 24/7 TECH SUPPORT

US/Canada: +1.818.794.1286

Toll Free: 1.877.862.3833 (1.877.TMB.DUDE)

UK: +44 (0)20.8574.9739

Toll Free: 0800.652.5418

[techsupport@tmb.com](mailto:techsupport@tmb.com)

LOS ANGELES +1 818.899.8818

LONDON +44 (0)20.8574.9700

NEW YORK +1 201.896.8600

BEIJING +86 10.8492.1587


CANADA +1 519.538.0888



A full service company providing technical support, customer service, and follow-up. Providing products and services for the industrial, entertainment, installation, defense, broadcast, research, telecommunications, and signage industries. Servicing the global market from offices in Los Angeles, London, New York, Toronto, and Beijing.



## Documents / Resources

|                                                                                     |                                                                                                                                     |
|-------------------------------------------------------------------------------------|-------------------------------------------------------------------------------------------------------------------------------------|
|  | <p><a href="#">SOLARIS Flare LR Q+ Strobe and Blinder Lighting</a> [pdf] User Guide<br/>Flare LR Q, Strobe and Blinder Lighting</p> |
|-------------------------------------------------------------------------------------|-------------------------------------------------------------------------------------------------------------------------------------|

## References

