

Software FirmWare Installation Guide

[Home](#) » [Software](#) » Software FirmWare Installation Guide 



Contents

1

Firmware Installation Update

2

Documents / Resources

3

Related Posts

Firmware Installation Update

1. Decompressing the files

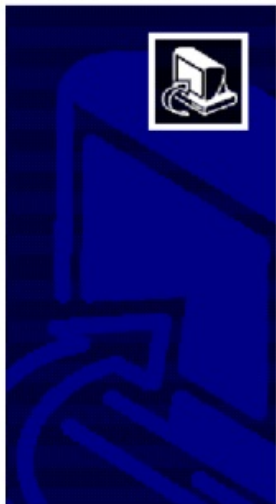
<input type="checkbox"/> 名称	修改日期	类型	大小
 UC235C-FW-2022-7-13	2022/7/14 13:39	WinRAR 压缩文件	1,822
 UC235C-FW-2022-7-13	2022/7/14 13:38	文件夹	

<input type="checkbox"/> 名称	修改日期	类型	大小
 2-HUB	2022/7/14 13:38	文件夹	
 UC235C-FW	2022/7/14 13:37	文件夹	

2. Open the HublspTool_Install

<input type="checkbox"/> 名称	修改日期	类型	大小
 HublspTool_Install_20190625	2019/6/25 16:52	应用程序	

3. Run HublspTool_Install_20190625



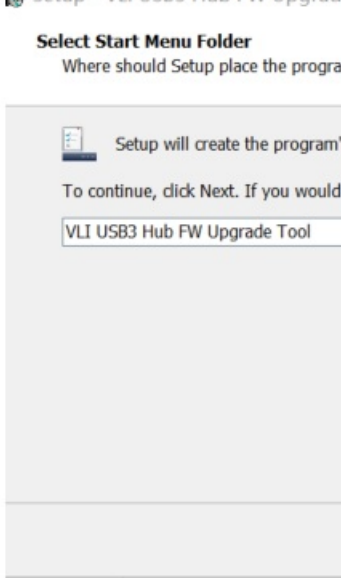
Welcome to the VLI USB3 Hub FW Upgrade Tool Setup Wizard

This will install VLI USB3 Hub FW Upgrade Tool version 3.3B on your computer.

It is recommended that you close all other applications before continuing.

Click Next to continue, or Cancel to exit Setup.

Next > Cancel



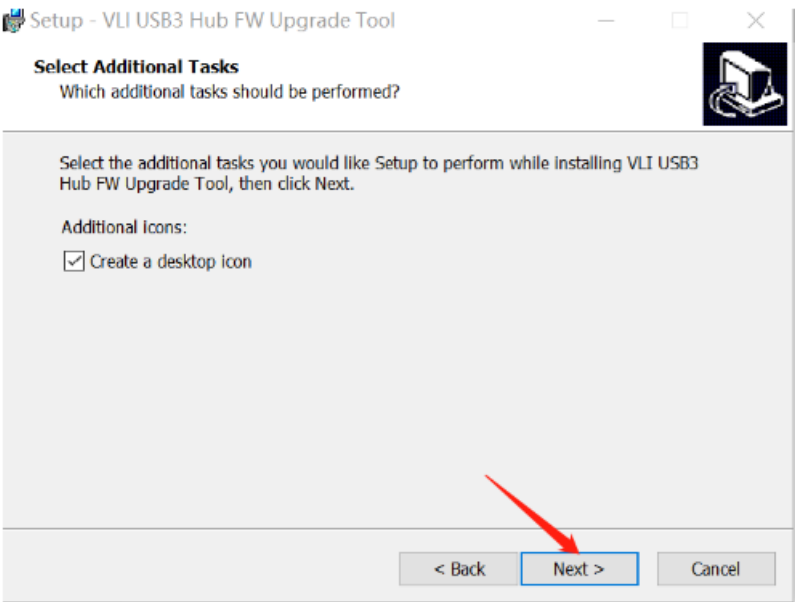
Select Start Menu Folder

Where should Setup place the program?

Setup will create the program's Start menu folder.

To continue, click Next. If you would like to change the folder, click on the folder name.

VLI USB3 Hub FW Upgrade Tool



Select Additional Tasks

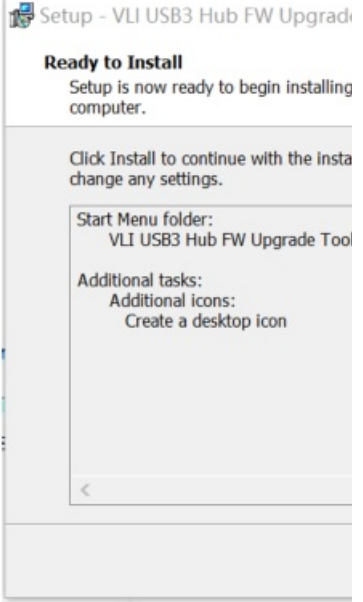
Which additional tasks should be performed?

Select the additional tasks you would like Setup to perform while installing VLI USB3 Hub FW Upgrade Tool, then click Next.

Additional icons:

☒ Create a desktop icon

< Back **Next >** Cancel



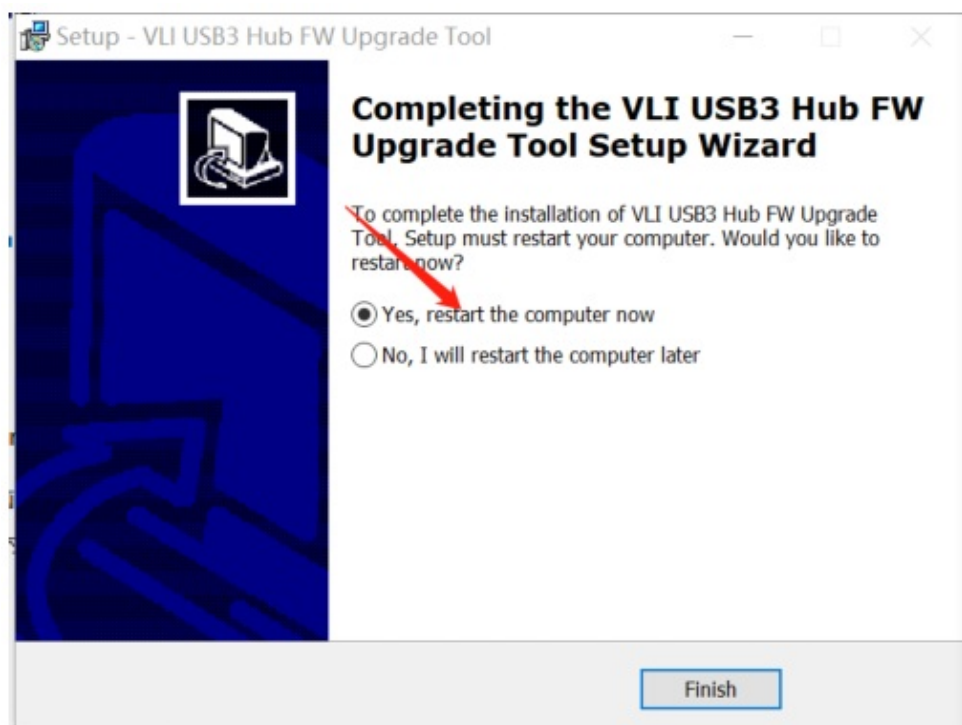
Ready to Install

Setup is now ready to begin installing the program on your computer.

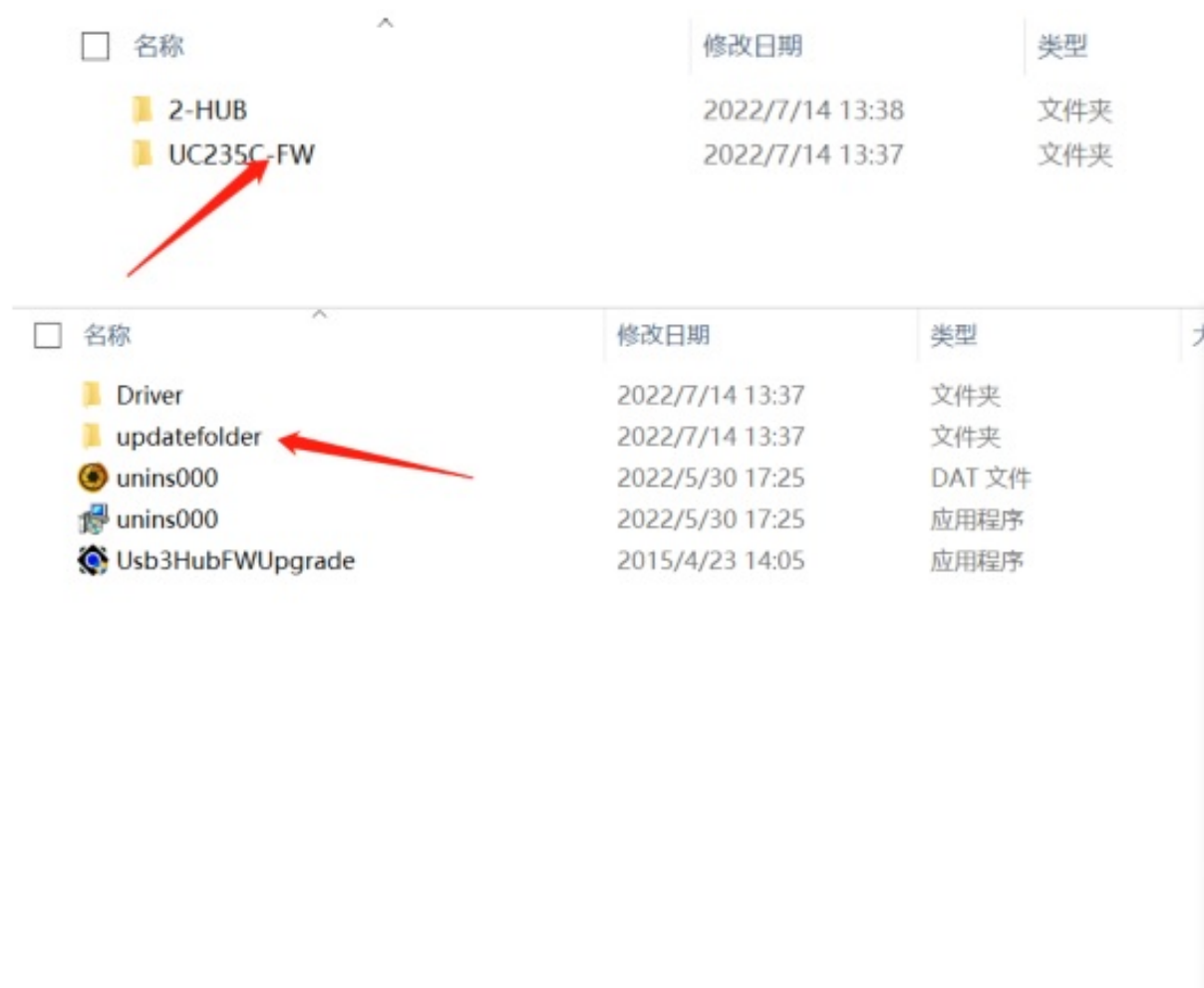
Click Install to continue with the installation. You can click Cancel to change any settings.

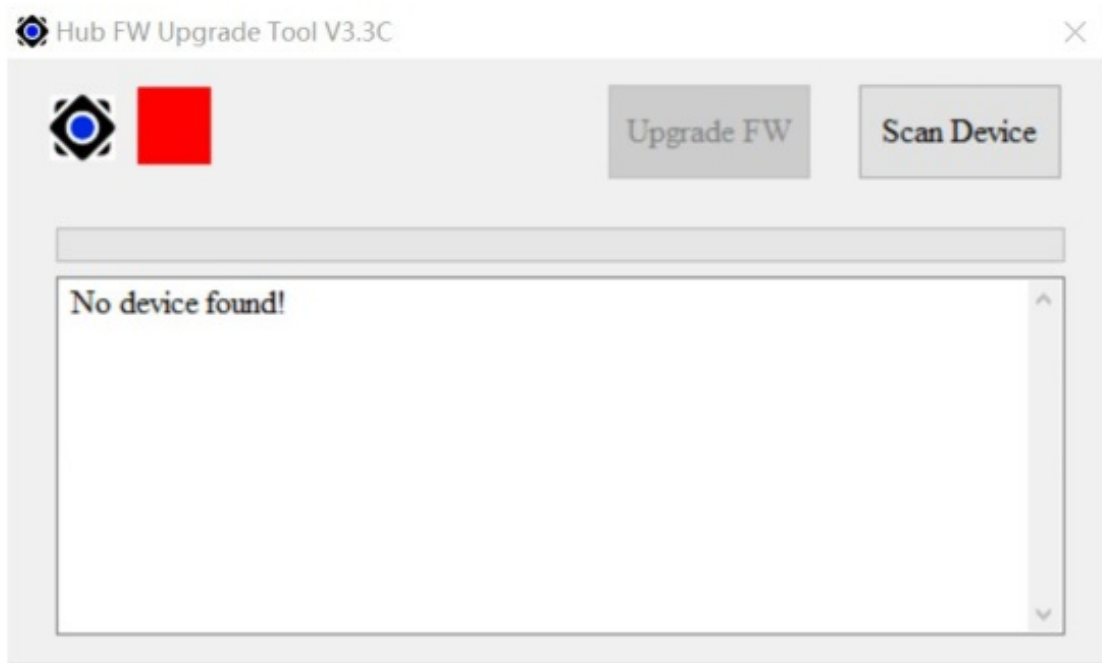
Start Menu folder:
VLI USB3 Hub FW Upgrade Tool

Additional tasks:
Additional icons:
Create a desktop icon



4. Follow the arrow to open the file

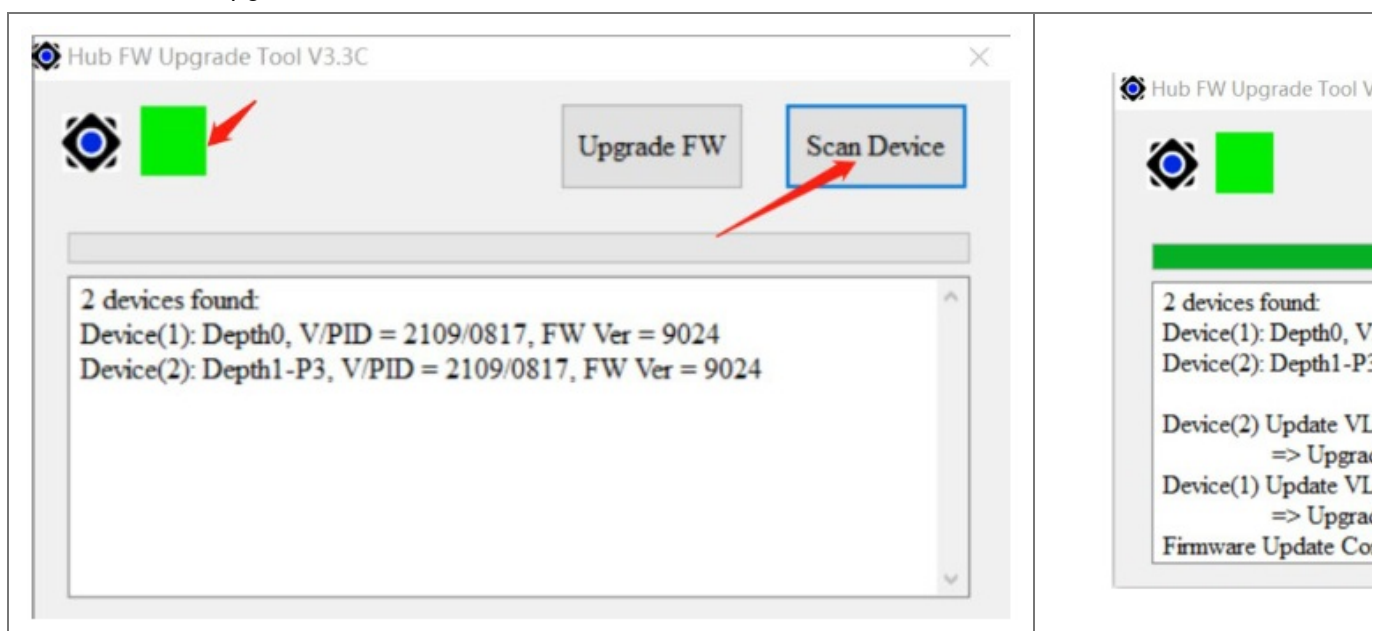




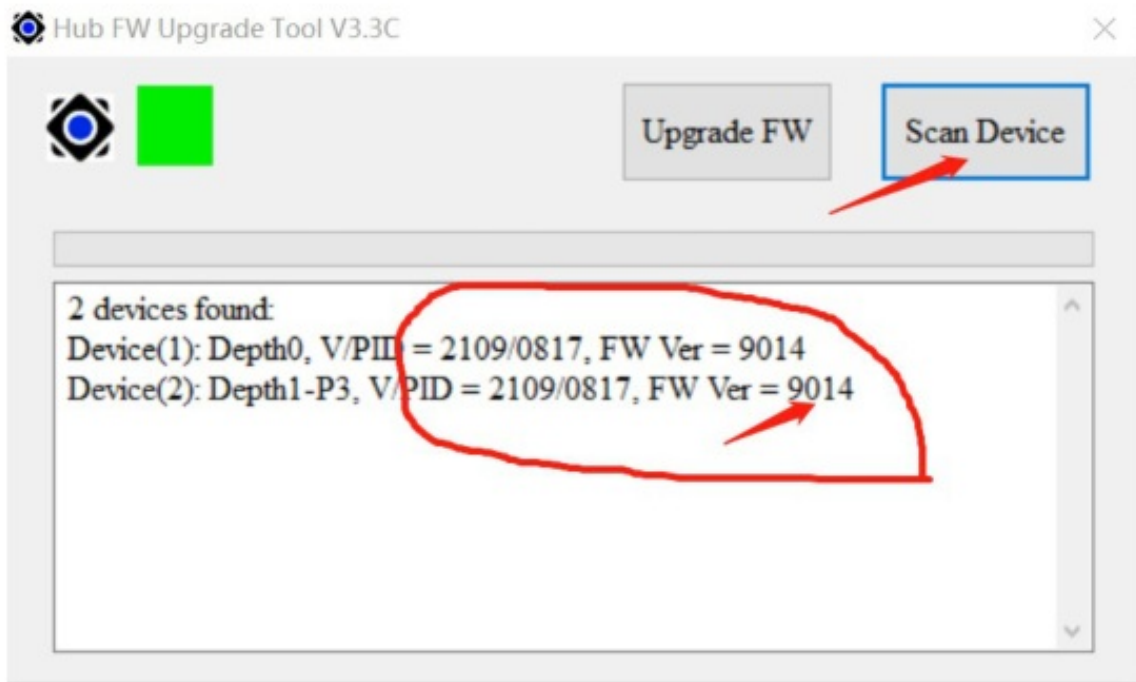
5. Connect the dock to the laptop (Windows)




6. Green indicates successful identification whereby the FW version is "9024". This is the old version so click "Scan Device" to upgrade to the new version.



7. After completion, wait a few seconds and click "Scan Device" again to verify the FW version. It should show "9014" which is the new version and indicates we have installed the new FW correctly.



Documents / Resources

	<p>Software FirmWare [pdf] Installation Guide FirmWare</p>
------------------------------------------------------------------------------------	--------------------------------------------------------------------------------

Manuals+.