



Software s S4 MK3 Silent Echo Mod Installation Guide

[Home](#) » [Software s](#) » Software s S4 MK3 Silent Echo Mod Installation Guide 

Contents

- [1 Software s S4 MK3 Silent Echo Mod](#)
- [2 Configure IAC Driver](#)
- [3 Configure Traktor Mapping Devices](#)
- [4 INSTALLATION](#)
- [5 Documents / Resources](#)
- [6 Related Posts](#)

SOFTWARE

Software s S4 MK3 Silent Echo Mod



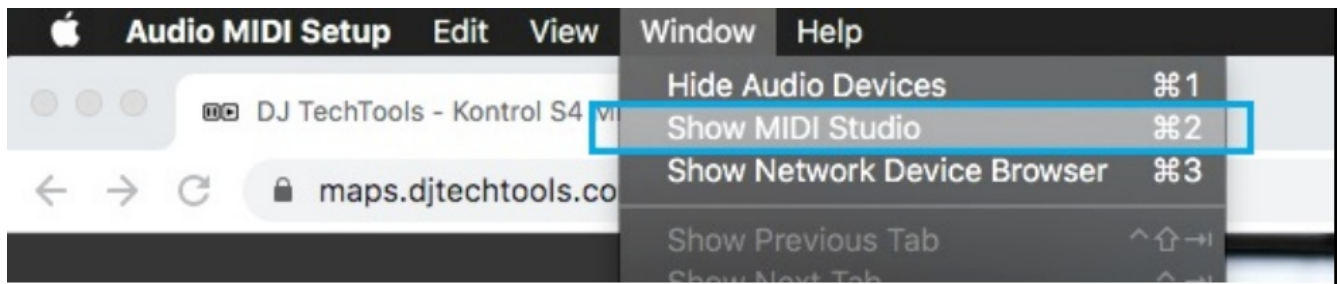
Configure IAC Driver

The IAC (inter-application-communication) Driver is already built into macOS. By enabling this driver, you are creating a virtual MIDI cable which is required for the “Vinyl” button function.

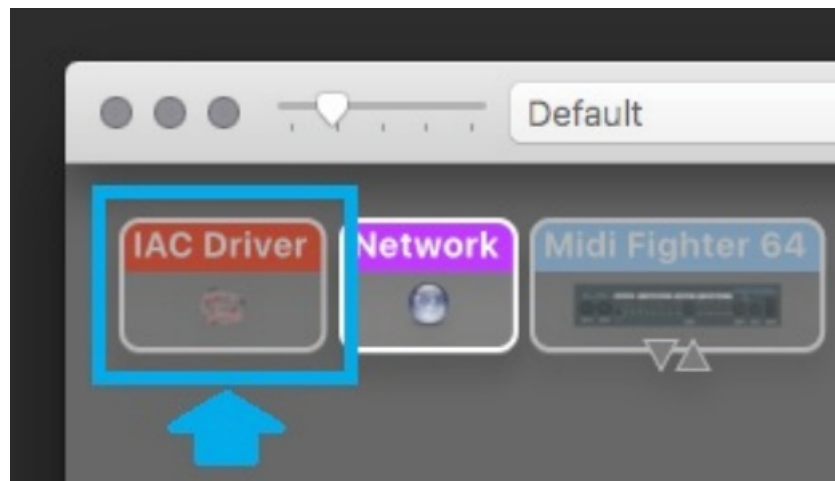
1. Open Audio MIDI Setup (Applications → Utilities → Audio MIDI Setup)

▼ Utilities	Oct 23, 2019, 5:47 PM	--	Folder
Activity Monitor	Oct 30, 2019, 7:47 AM	10.4 MB	Application
▶ Adobe Application Manager	Oct 23, 2019, 5:47 PM	--	Folder
▶ Adobe Installers	Oct 23, 2019, 5:47 PM	--	Folder
AirPort Utility	Oct 30, 2019, 7:47 AM	50.2 MB	Application
Audio MIDI Setup	Oct 30, 2019, 7:47 AM	4.2 MB	Application
Bluetooth File Exchange	Nov 29, 2019, 5:53 AM	1.1 MB	Application
Boot Camp Assistant	Oct 30, 2019, 7:47 AM	3.7 MB	Application

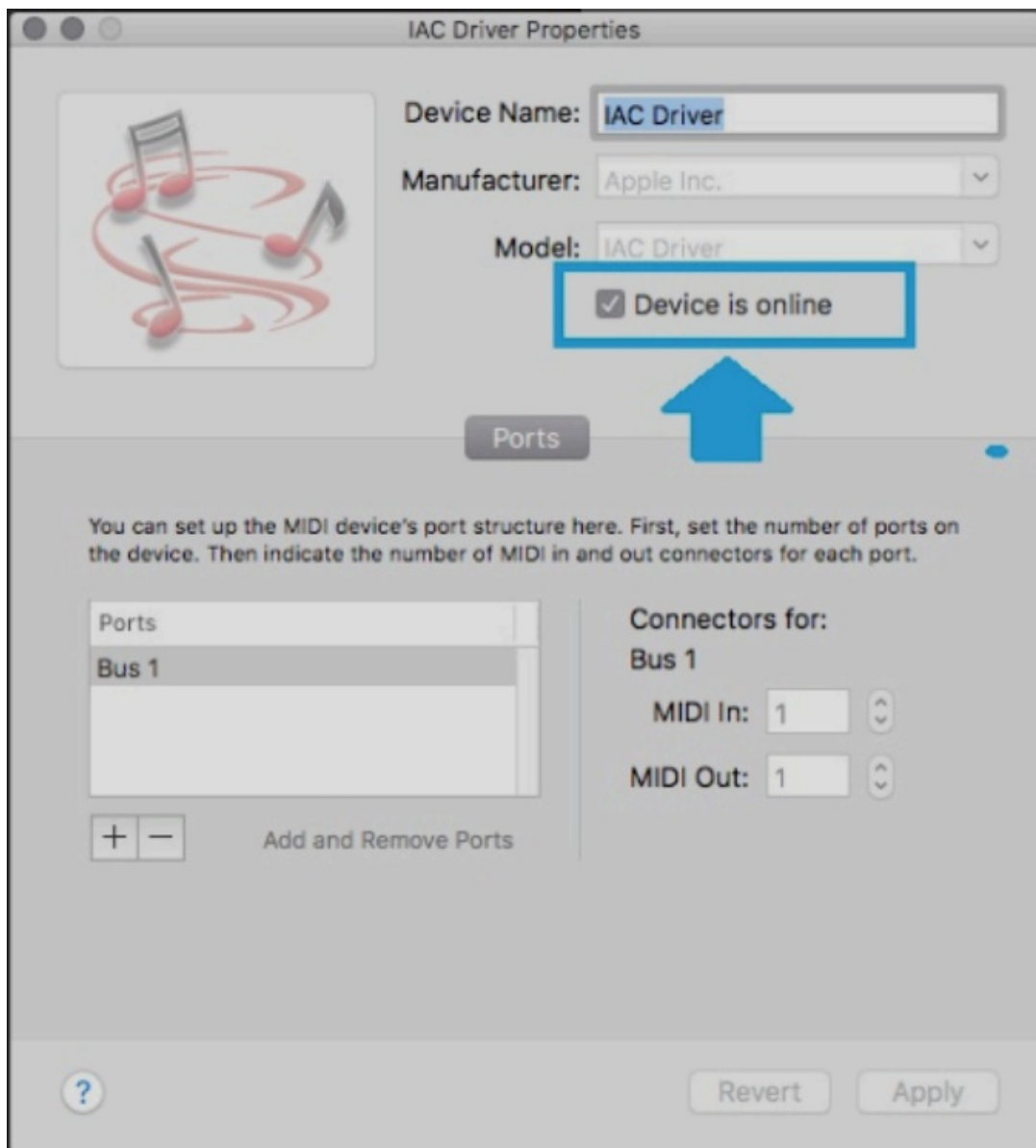
2. Click on “**Window**” menu and select “Show MIDI Studio”. The new window will appear.



3. Double-click on the “IAC Driver” device to open settings.



4. Check the “Device is online” box to activate IAC Driver.

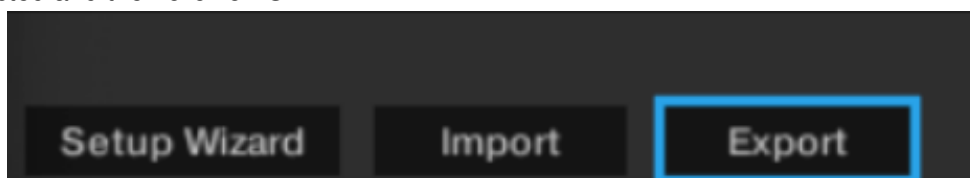


5. Close the Audio MIDI Studio and with your Control S4 MK3 connected, start Traktor.



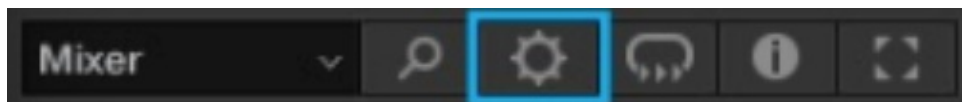
Configure Traktor Mapping Devices

Before you continue, it is strongly recommended to backup your mappings and settings in case you will need them again because those will be overwritten in Step 3. To do so, click on bigger Export button, leave all categories selected and then click on OK.

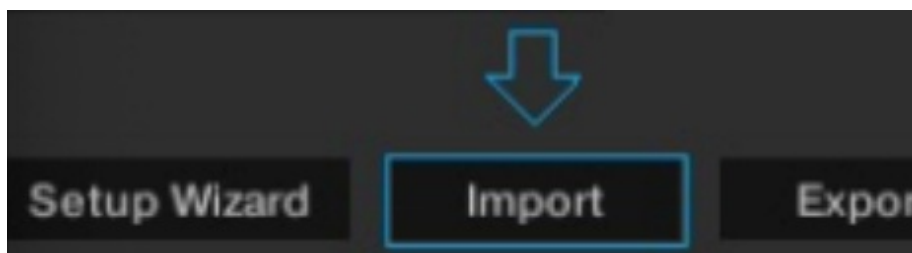


INSTALLATION

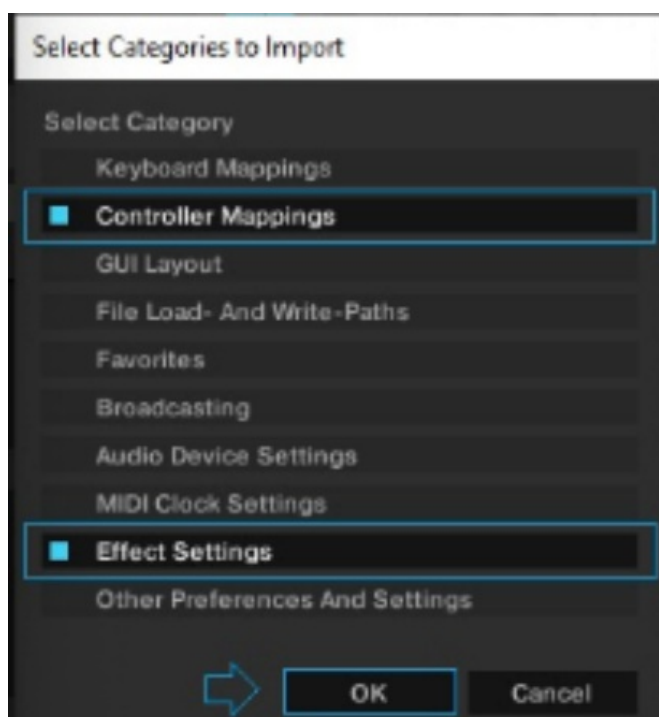
1. Start Traktor and click on gear symbol to open Preferences.



2. Click on bigger Import button.



3. Navigate to the place on your Mac where mapping file is saved and double click to open it. When the new window ask which categories should be imported, only "controller mappings" and "effect settings" should be selected automatically. Then click on OK.



Important Note: Repeat steps 2 and 3 once again to successfully import new effect settings. Otherwise you will see wrong effects go PAD FX modes.

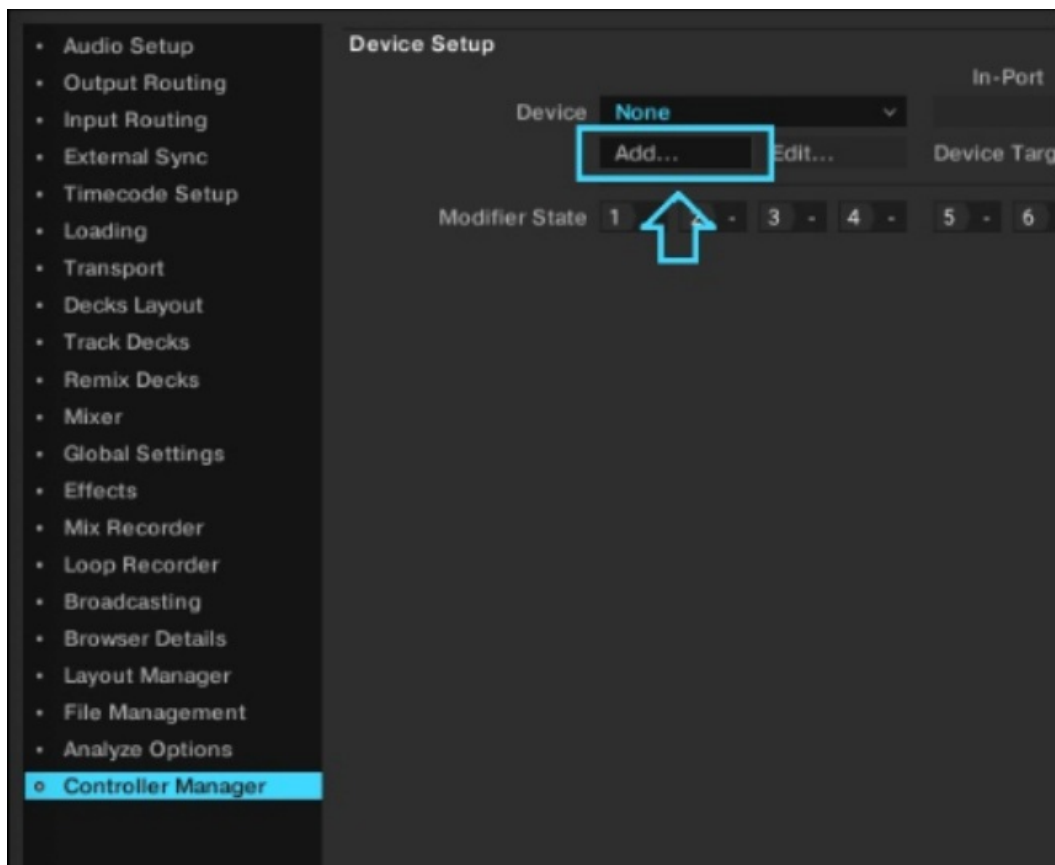
Once the mapping is imported you will see 3 different Mapping Devices in the Devices menu.

Make sure that In-Port and Out-Port for each of 3 Mapping Devices are assigned as the following image illustrates.

Mapping Device	In-Port	Out-Port
1_S4.MK3.Smooth.Echo v1.0	Kontrol S4 MK3	Kontrol S4 MK3
2_S4.MK3.Smooth.Echo v1.0	None	IAC Driver
3_S4.MK3.Smooth.Echo v1.0	IAC Driver	None

4. This step is optional. In case that you wish to add and use some other mappings along side this one you can use smaller "ADD..." button.

Preferences → Controller Manager → Device Setup → Device → Add... → Import TSI → Import Other.



That is all Feel free to send feedback about this mapping to vstimidi@gmail.com

TRAKTORMAPS.COM

Documents / Resources

	<p>Software s S4 MK3 Silent Echo Mod [pdf] Installation Guide S4 MK3 Silent Echo Mod, S4 MK3 Echo Mod, Silent Echo Mod, Echo Mod, Mod</p>
--	--

[Manuals+.](#)