



Software s Excel to Metrel ESM File Converter Software Instructions

[Home](#) » [Software s](#) » Software s Excel to Metrel ESM File Converter Software Instructions 

Contents

- [1 Excel to Metrel ESM file converter](#)
- [2 Welcome!](#)
 - [2.1 Continue](#)
- [3 Excel to Metrel ESM file converter instructions](#)
- [4 1 Dashboard screen](#)
- [5 2 Importing example](#)
- [6 Documents / Resources](#)
 - [6.1 References](#)
- [7 Related Posts](#)

Excel to Metrel ESM file converter

Welcome!

This tool will help you convert your data in a .xlsx (Excel) file format to Metrel .padfx file format. You can then easily edit and/or view your data using the Metrel ES Manager or Metrel SDK software.

Continue

Excel to Metrel ESM file converter instructions



Distributor:

Manufacturer:
METREL d.d.
Ljubljanska cesta 77
1354 Horjul
Slovenia

web site: <http://www.metrel.si>
e-mail: metrel@metrel.si

© 2022 METREL



Mark on your equipment certifies that this equipment meets the requirements of the EU (European Union) concerning safety and electromagnetic compatibility regulations.

No part of this publication may be reproduced or utilized in any form or by any means without permission in writing from METREL.

MESM file converter

1 Dashboard screen

Wizard

General Settings

Number of lines to skip from top	:	<input type="text" value="0"/>
Master Work scope	:	<input type="text" value="Safety of Electrical Equipment I"/> ▼
Child Work scope	:	<input type="text" value="PAT (new instruments)"/>

Structure objects Settings

>_ Node

Structure object type:

▼

Row Settings

Structure object type

:

Appliance_FD

Parameter links

Parameter

:

Appliance ID

Column letter

:

A

Allow null or empty

:

False

Column type

:

Text

Add new...

Load configuration

Save configuration

Select an excel file and start conversion

Figure 1 Dashboard screen of web service wizard – fixed part

General Settings		
Enables basic settings for creation of .padfx files.		
Number of lines to skip from top	Defines how many lines in the excel file will be skipped (starting, line 1).	
Master Work scope	Defines the master and child Work scope for created .padfx file. Correct Work scope must be selected in order to enable files transfer to the desired instrument.	
Child Work scope		
Structure objects Settings		
Enables the creation of a basic structure, where the structural elements with relevant data will be imported.		

Structure object type	Enables selection of corresponding structural elements for the relevant structural level.
Row Settings	
Enables to define data structure from excel file, to be linked to the corresponding parameters of the selected structural element.	
Parameter links	
Each configuration is corresponding to relevant column from source excel file.	
Parameter	Enables selection of parameter linked to the corresponding structural element. Each parameter can be linked only to one column letter in the source excel file.
Column letter	Defines the column in the source excel file.
Allow null or empty	Defines criteria for specific cell. <u>True</u> = allows empty cells in specific column. <u>False</u> = forbids empty cells in specific column.
Column type	Defines criteria for specific cell. <u>Text</u> = cell data can contain letters, numbers, and special characters such as ! or &. <u>Date & time</u> = cell data shall be in following format dd.mm.yyyy hh:mm:ss.
Add new...	Allows adding of the set parameters to the list.
Load configuration	Enables to load user configuration from file.
Save configuration	Enables to save set configuration to file.
Select an excel file and start conversion	Enables selection of source excel file, conversion to .pdfx is started automatically if no exceptions are found.

Parameter
Column letter
Allow null or empty
Column type

:
:
:
:

Group

True
Text

Add new...

Parameter ID
Column letter
Allow null or empty
Column type

:
:
:
:

Producer / Make [Id: 198]
D
True
Text

Parameter ID
Column letter
Allow null or empty
Column type

:
:
:
:

Inventory No. [Id: 193]
C
True
Text

Parameter ID
Column letter
Allow null or empty
Column type

:
:
:
:


Name [Id: 195]
B
True
Text

Parameter ID
Column letter
Allow null or empty
Column type

:
:
:
:

Appliance ID [Id: 194]
A
True
Text

Figure 2 Dashboard screen of web service wizard – user defined part

<div> <div> Parameter ID Column letter Allow null or empty Column type </div> <div> : : : : </div> <div> Producer / Make [Id: 198] D True Text </div> </div>	A field with user-set parameters, each section defines its own column in excel.
	Allows removal of specific section.

2 Importing example

First prepare the excel file, put the data into the correct format. Data shall be arranged in columns, all cells except dates shall be categorized as General. Cells containing dates shall be categorized as Date and formatted as dd.mm.yyyy.

	A	B	C	D	E	F	G
1	ID number	Name	Inventory number	Producer / Make	Test Date	Retest period (in months)	Next Test
2	ID = 194	ID = 195	ID = 196	ID = 198	ID = 261	ID = 215	ID = 257
3	12830	Agregat malarski GX 21	HDGDD661611DDDD	GRACO	15.3.2021	12	15.3.2022
4	12831	Agregat malarski GX 21	HSJJNNCD5515457	GRACO	15.3.2021	12	15.3.2022
5	12832	Agregat malarski GX 21	JDBZZG554SD455D	GRACO	15.3.2021	12	15.3.2022
6	12833	Agregat malarski GX 21	HSJJNNCD5515455	GRACO	15.3.2021	12	15.3.2022
7	12834	Agregat malarski GX 21	HSJJNNCD5515112	GRACO	16.3.2021	12	16.3.2022
8	12835	Agregat malarski GX 21	A21B17G183030295	GRACO	17.3.2021	12	17.3.2022
9	12836	Agregat malarski GX 21	L20B17G183029724	GRACO	16.3.2021	12	16.3.2022
10	12837	Agregat malarski GX 21	A21B17G183030328	GRACO	17.3.2021	12	17.3.2022
11	12838	Agregat malarski GX 21	L20B17G183029911	GRACO	16.3.2021	12	16.3.2022
12	12839	Agregat malarski GX 21	A21B17G183030814	GRACO	17.3.2021	12	17.3.2022
13	12840	Agregat malarski GX 21	A21B17G183030809	GRACO	17.3.2021	12	17.3.2022
14	12841	Agregat malarski GX 21	A21B17G183030597	GRACO	15.3.2021	12	15.3.2022
15	12875	Agregat malarski GX 21	C21B17G183033207	GRACO	15.3.2021	12	15.3.2022
16	12876	Agregat malarski GX 21	C21B17G183033211	GRACO	15.3.2021	12	15.3.2022
17	12877	Agregat malarski GX 21	C21B17G183033208	GRACO	15.3.2021	12	15.3.2022
18	12878	Agregat malarski GX 21	C21B17G183033205	GRACO	16.3.2021	12	16.3.2022
19	12879	Agregat malarski GX 21	D21B17G183035332	GRACO	17.3.2021	12	17.3.2022
20	12880	Agregat malarski GX 21	C21B17G183033198	GRACO	16.3.2021	12	16.3.2022
21	12881	Agregat malarski GX 21	C21B17G183033193	GRACO	17.3.2021	12	17.3.2022
22	12882	Agregat malarski GX 21	C21B17G183033212	GRACO	16.3.2021	12	16.3.2022
23	12883	Agregat malarski GX 21	C21B17G183033210	GRACO	17.3.2021	12	17.3.2022
24	12884	Agregat malarski GX 21	C21B17G183033206	GRACO	17.3.2021	12	17.3.2022
25	12885	Agregat malarski GX 21	C21B17G183033075	GRACO	15.3.2021	12	15.3.2022
26	12886	Agregat malarski GX 21	C21B17G183033204	GRACO	15.3.2021	12	15.3.2022
27	13079	Agregat malarski GX 21	L20B17G183030091	GRACO	15.3.2021	12	15.3.2022
28	13082	Agregat malarski GX 21	C21B17G183033202	GRACO	15.3.2021	12	15.3.2022

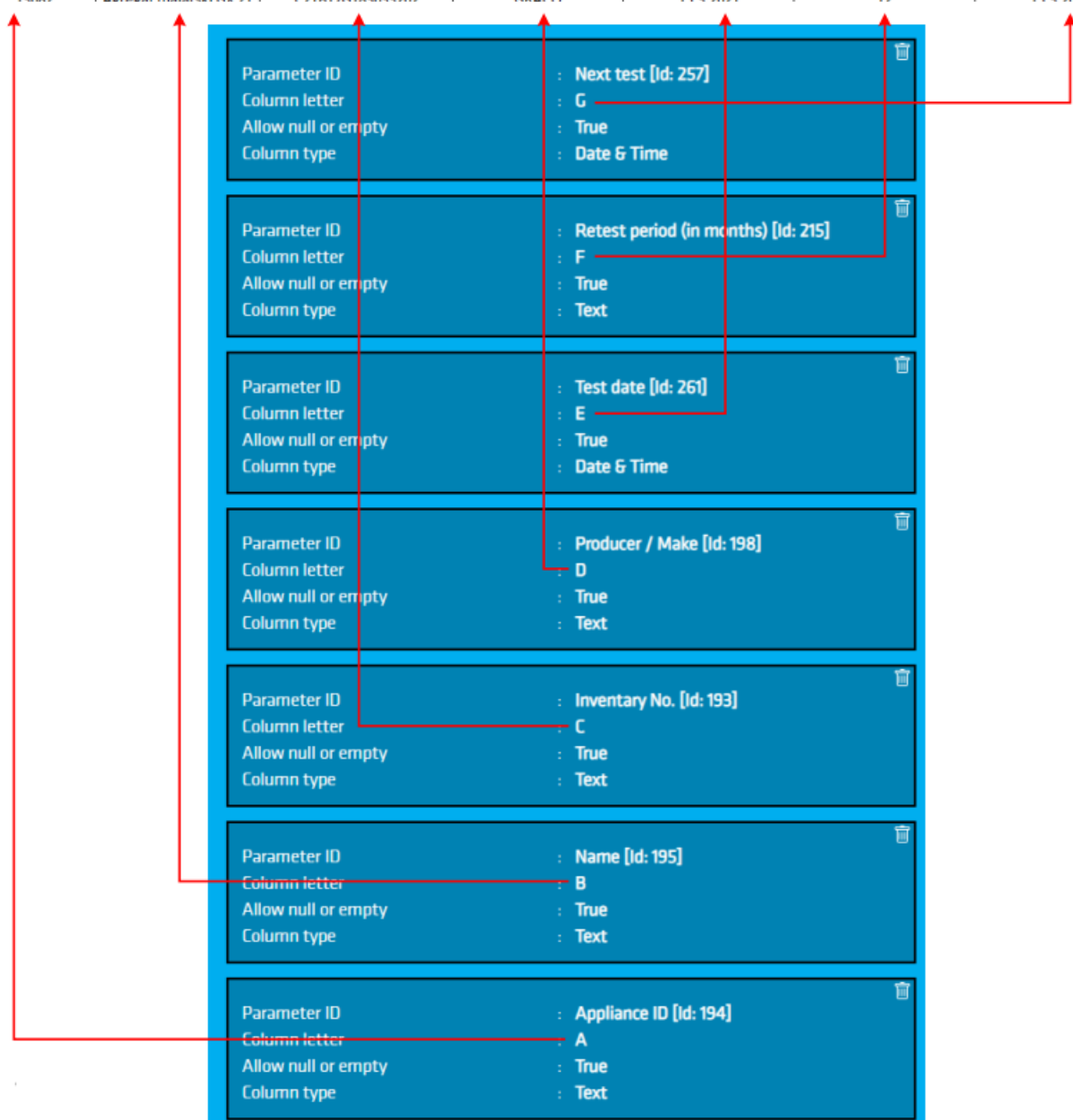


Figure 3 Correlation between Excel & Parameter links

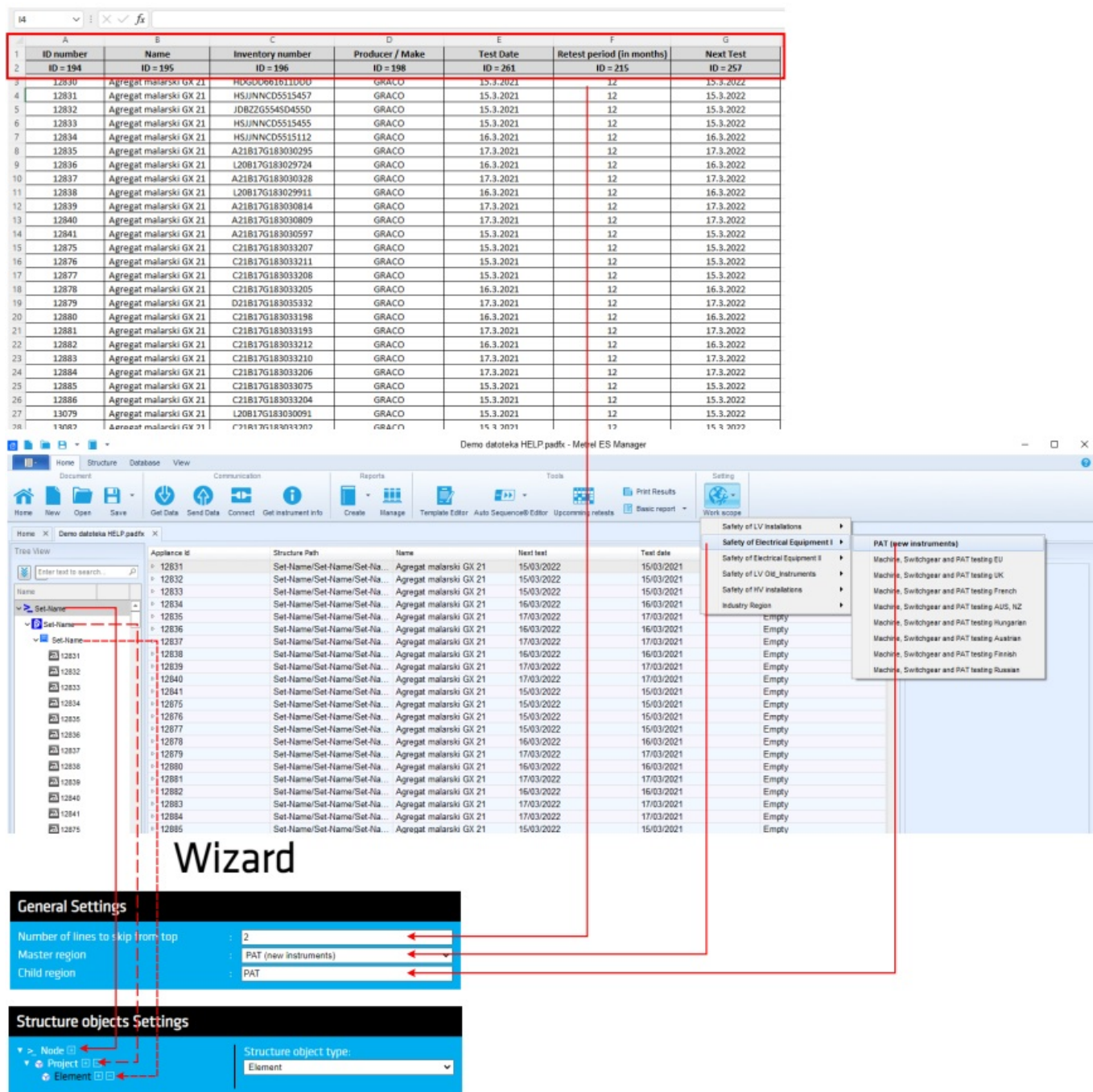


Figure 4 Correlation between MESM, Excel, and Wizard

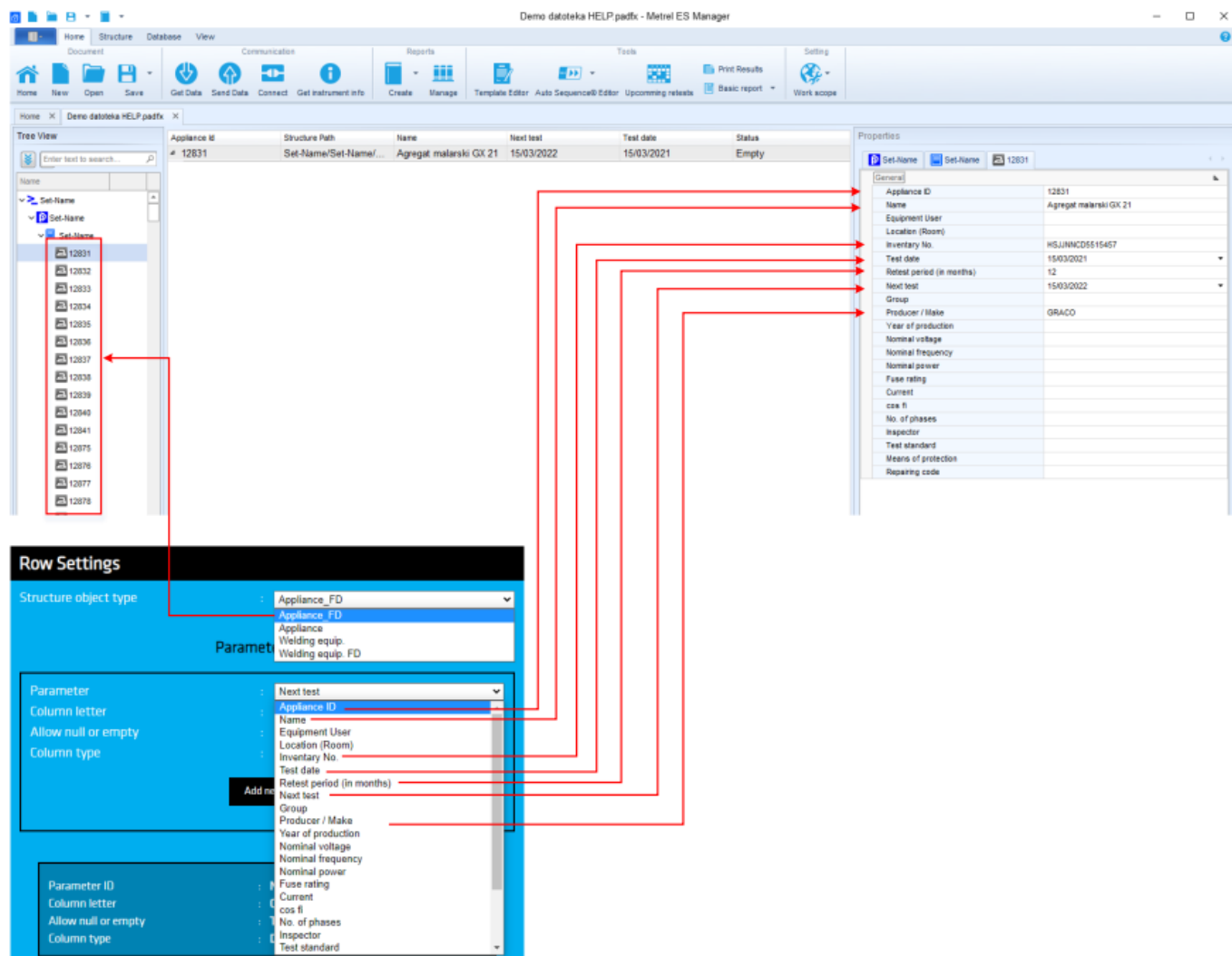


Figure 5 Correlation between MESM & Wizard

Documents / Resources

<p>Excel to Metrel ESM File Converter Software</p>	<p>Software s Excel to Metrel ESM File Converter Software [pdf] Instructions</p> <p>Excel to Metrel ESM File Converter Software</p>
--	---

References

- [Metrel d.o.o.](#)