



softing HW-DP SmartLink User Guide

[Home](#) » [softing](#) » softing HW-DP SmartLink User Guide 

Contents

- 1 [softing HW-DP SmartLink](#)
- 2 [Product Information: smartLink HW-DP](#)
- 3 [Product Usage Instructions](#)
- 4 [How to use smartLink HW-DP with PDM](#)
- 5 [Configuration of smartLink HW-DP](#)
- 6 [Installation of PROFIBUS-Driver](#)
- 7 [Configuration in the Siemens Software \(e.g. SIMATIC PDM stand alone\)](#)
- 8 [Documents / Resources](#)
 - 8.1 [References](#)
- 9 [Related Posts](#)



softing HW-DP SmartLink



Product Information: smartLink HW-DP

The smartLink HW-DP is a device that allows the integration of PROFIBUS networks with Siemens software, such as SIMATIC PDM. It provides a seamless connection between the PROFIBUS network and the software, enabling efficient communication and configuration.

- **Manufacturer:** Softing Industrial Automation GmbH
- **Address:** Richard-Reitzner-Allee 6, 85540 Munich
- **Version:** 1.1
- **Date:** 07.08.2023

Product Usage Instructions

Configuration of smartLink HW-DP

1. Log on to the web server of smartLink HW-DP.
2. Navigate to PROFIBUS and open Segment DP1.
3. Adjust the PROFIBUS parameters as needed, click OK, and click Apply Configuration.

Installation of PROFIBUS-Driver

1. Download and install the latest PROFIBUS-Driver (Universal PROFIBUS Driver V5.47.4 or higher version) from the Softing website.
2. Start the Driver Configurator from the start menu.
3. Add a new Node under smartLink HW-DP.
4. Follow the instructions on the screen and finally press Apply. A green check mark will show up beside the new Node. The Interface Number will later show up in the Siemens Software.

Configuration in the Siemens Software (e.g., SIMATIC PDM stand alone)

1. Download and install the PDM libraries from the Softing website.
2. In the interface dialog of PDM, choose Softing PROFIBUS Interface.PROFIBUS.1.
3. In the Properties, choose the Board number (Refer to Interface number in the PROFIBUS Control Panel here 0).
4. Do not try to adjust the Bus parameter in this dialog, as the Bus parameters from the smartLink HW-DP web interface will apply.

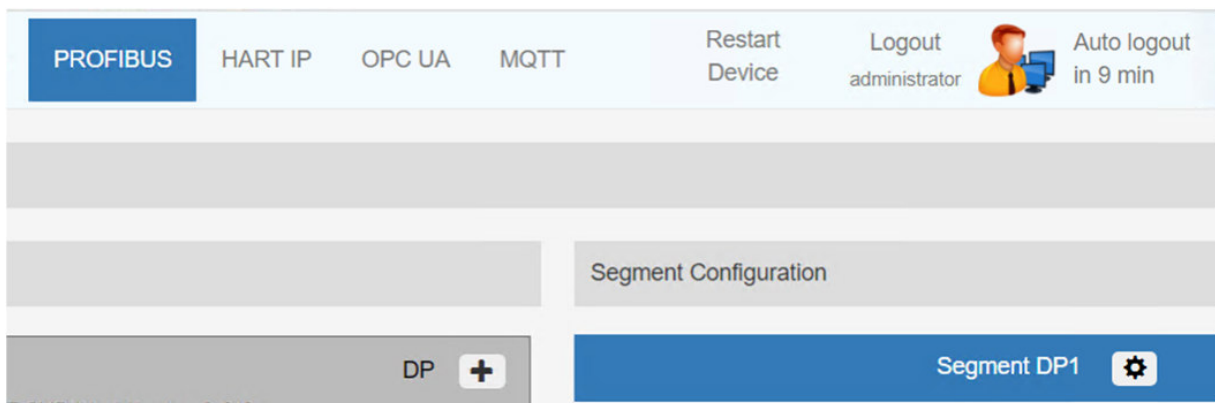
Note: Within PDM, you must use a PROFIBUS-Network even though smartLink HW-DP is connected via Ethernet.

How to use smartLink HW-DP with PDM

1. Configuration of smartLink HW-DP
2. Installation of PROFIBUS-Driver
3. Configuration in the Siemens Software (e.g. SIMATIC PDM stand alone)

Configuration of smartLink HW-DP

1. Log on to the web server of smartLink HW-DP
2. Navigate to PROFIBUS and open “Segment DP1”



3. Adjust the PROFIBUS-Parameters as needed, click “OK” and click “Apply Configuration”.

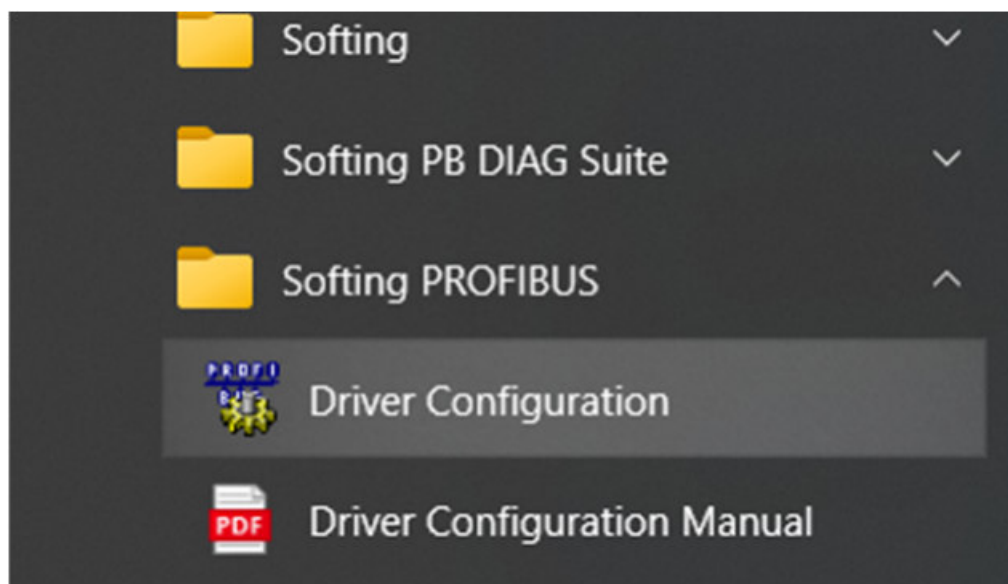
Bus parameter

	Project Settings		Effective Settings
Baudrate	<input type="text" value="1.5 MBaud"/>		<input type="text" value="1.5 MBaud"/>
Tsl [t/bit]	<input type="text" value="300"/>	✓	<input type="text" value="300"/>
Min Tsdr [t/bit]	<input type="text" value="11"/>	✓	<input type="text" value="11"/>
Max Tsdr [t/bit]	<input type="text" value="150"/>	✓	<input type="text" value="150"/>
Ttr [t/bit]	<input type="text" value="20000"/>	✓	<input type="text" value="20000"/>
Highest Station Address	<input type="text" value="126"/>	✓	<input type="text" value="126"/>
Tset [t/bit]	<input type="text" value="1"/>	✓	<input type="text" value="1"/>
Max Retry Limit	<input type="text" value="3"/>	✓	<input type="text" value="3"/>
Station Address	<input type="text" value="0"/>	✓	<input type="text" value="0"/>

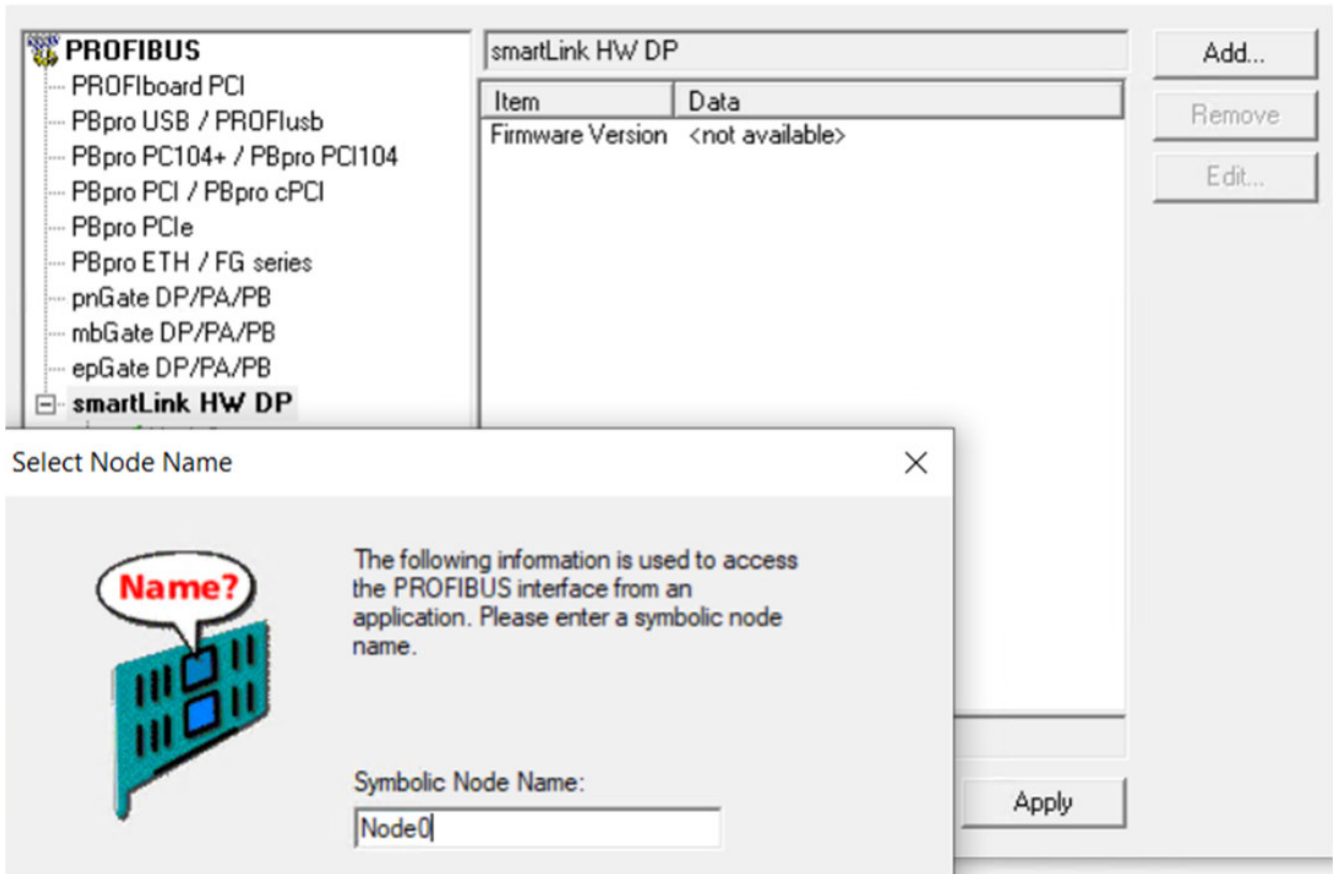
Please note: The busparameters only get effective with the action "Apply Configuration".

Installation of PROFIBUS-Driver

1. Download and install the latest PROFIBUS-Driver "Universal PROFIBUS Driver V5.47.4" (or higher version) from the Softing web site.
2. Start the Driver Configurator from the start menu

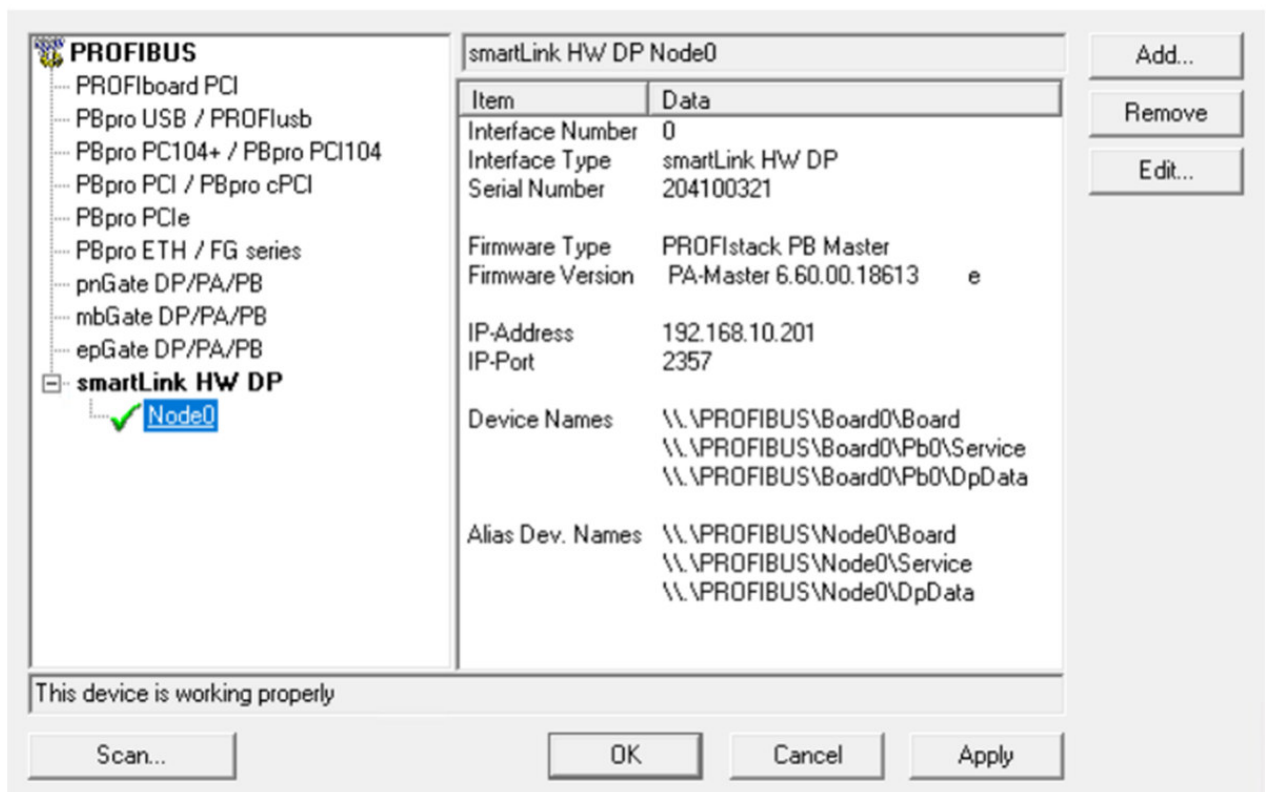


3. Add a new Node under "smartLink HW-DP"



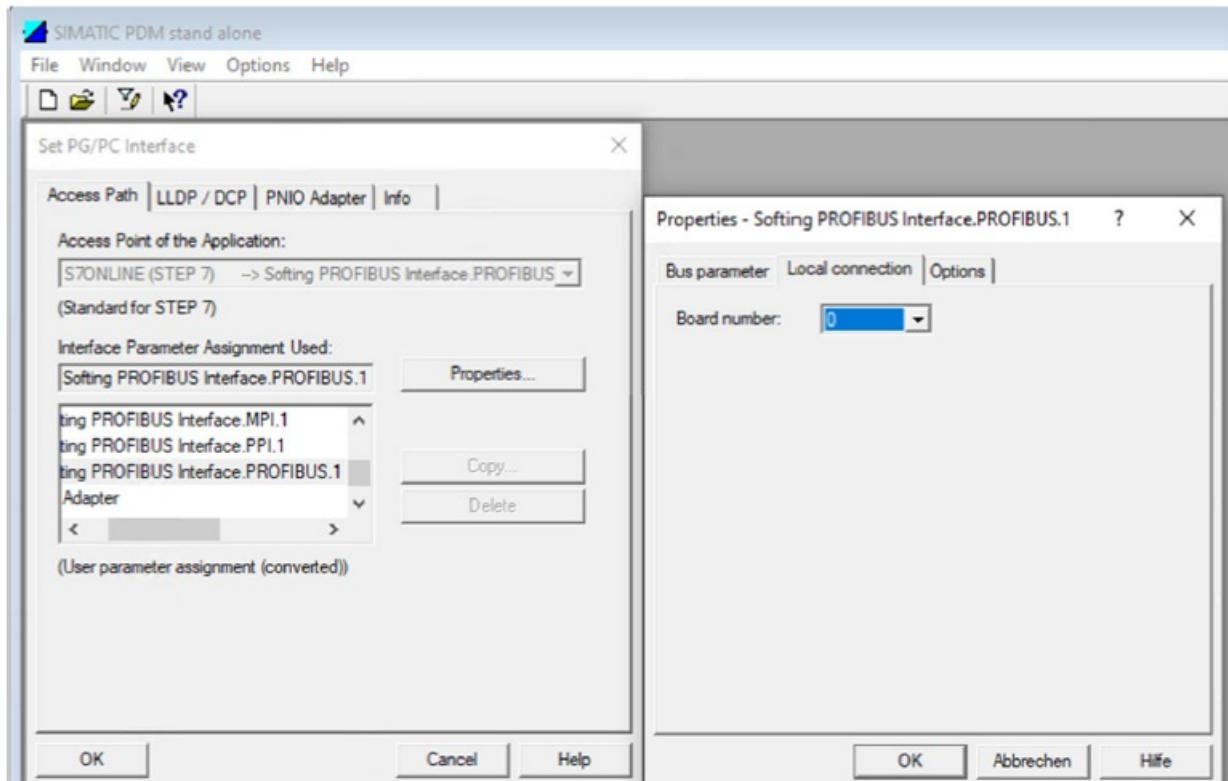
4. Follow the instructions on the screen and finally press “Apply”.

1. A green check mark will show up beside the new Node.
2. The Interface Number will later show up in the Siemens Software.



Configuration in the Siemens Software (e.g. SIMATIC PDM stand alone)

1. Download and install the PDM libraries from softing web site:
2. In the interface dialog of PDM you must choose “Softing PROFIBUS Interface.PROFIBUS.1”
3. In the Properties you can choose the Board number (Refer to Interface number in the PROFIBUS Control Panel here “0”)
4. Do not try to adjust the Bus parameter in this dialog, as the Bus parameters from the smartLink HW-DP web interface will apply.



Note:


Within PDM you must use a PROFIBUS-Network even though smartLink HW-DP is connected via Ethernet

Softing Industrial Automation GmbH Richard-Reitzner-Allee 6

85540 Munich

Version: 1.1 Date: 07.08.2023

Documents / Resources

	<p>softing HW-DP SmartLink [pdf] User Guide HW-DP SmartLink, HW-DP, SmartLink</p>
---	---

References

- [User Manual](#)

Manuals+.