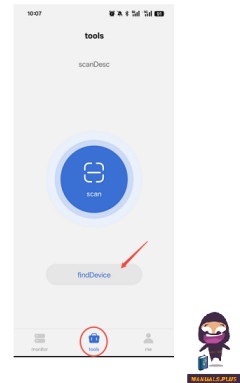


SOFAR
Built in Wi-Fi
Inverter App



SOFAR Built in Wi-Fi Inverter App Instruction Manual

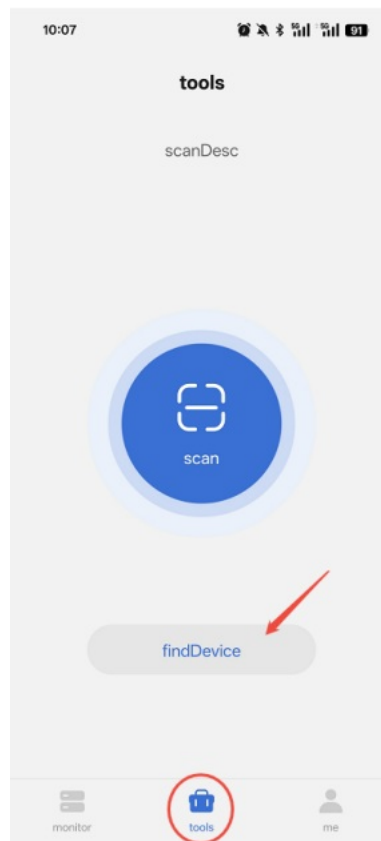
[Home](#) » [SOFAR](#) » SOFAR Built in Wi-Fi Inverter App Instruction Manual 

Contents

- 1 SOFAR Built in Wi-Fi Inverter App
- 2 Introduction
- 3 Network Connection operation procedure
- 4 Statement
- 5 FAQs
- 6 Documents / Resources
 - 6.1 References

SOFAR

SOFAR Built in Wi-Fi Inverter App



Introduction

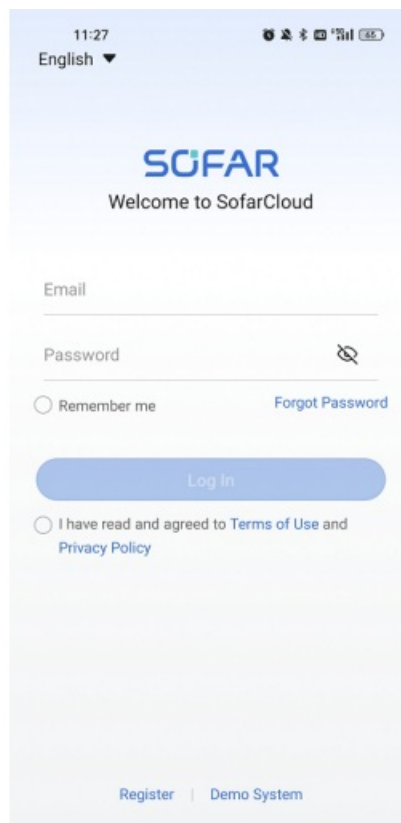
This document describes the procedure and instructions for connecting to the network when the inverter unit uses built-in Wi-Fi. This document is intended to be used by the specific addressees. No part of this document may be reproduced or distributed in any form or by any means without the prior written permission of Shenzhen SOFARSOLAR Co., Ltd.

Network Connection operation procedure

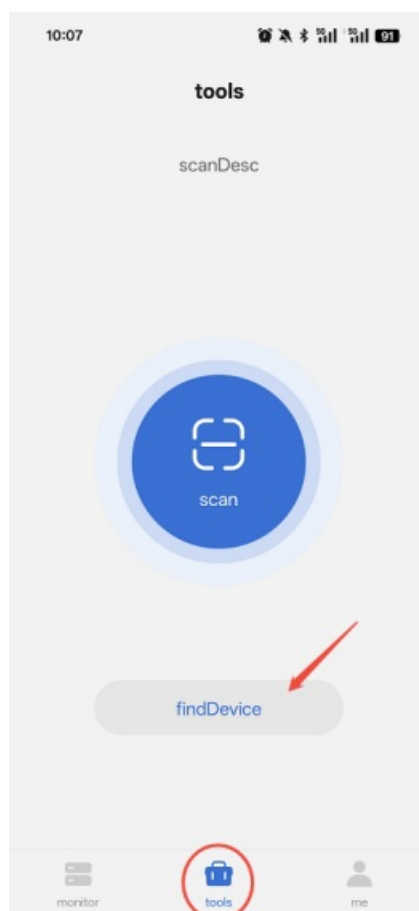
Please make sure the inverter has been installed and connected, switching on the inverter. Make sure you have a good Wi-Fi network signal in your location. The device supports network access only on the 2.4GHz band.

1. Use the smartphone to scan the QR code below to download the “SofarCloud” App and install it, complete the account registration and enter your account password to login.

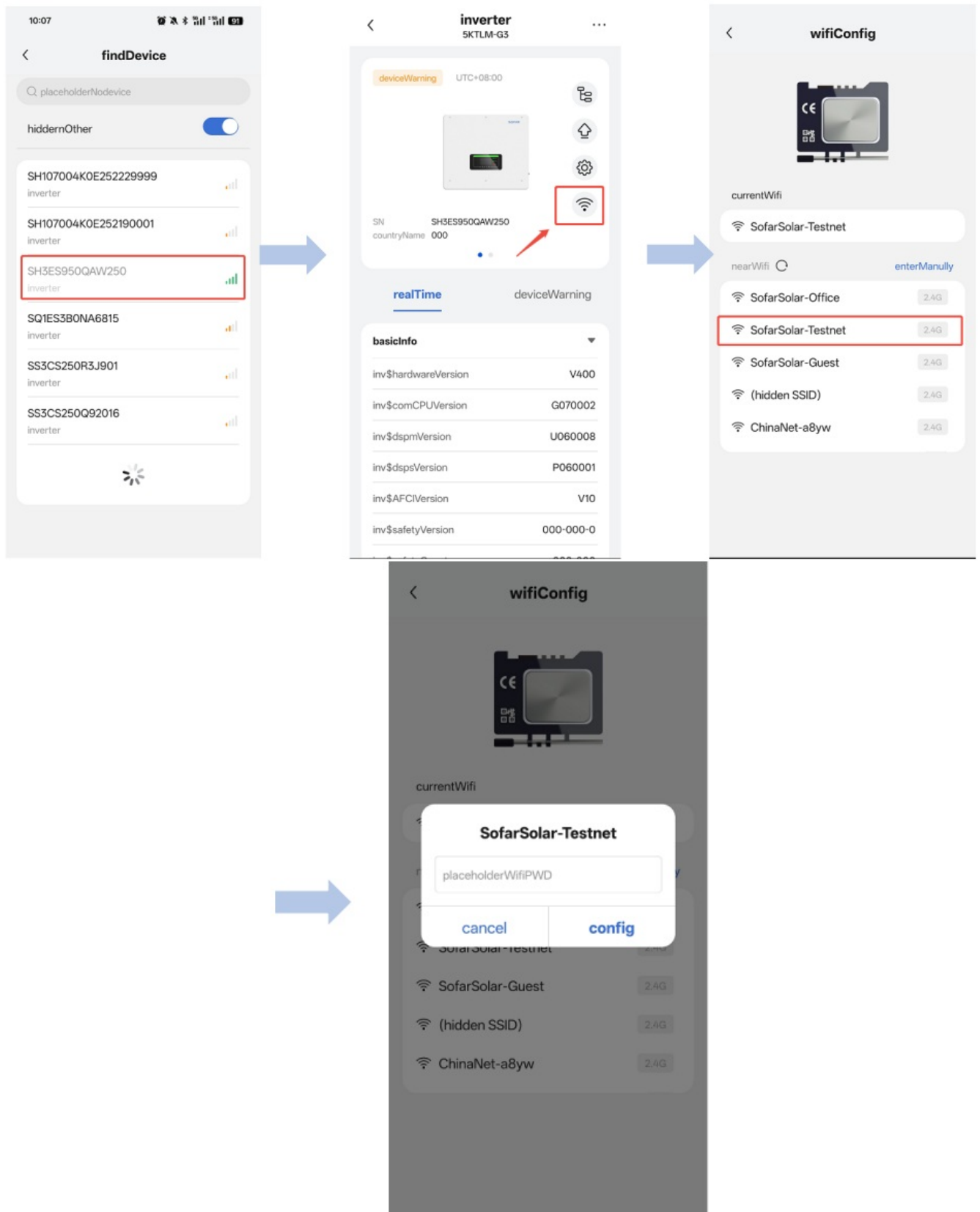




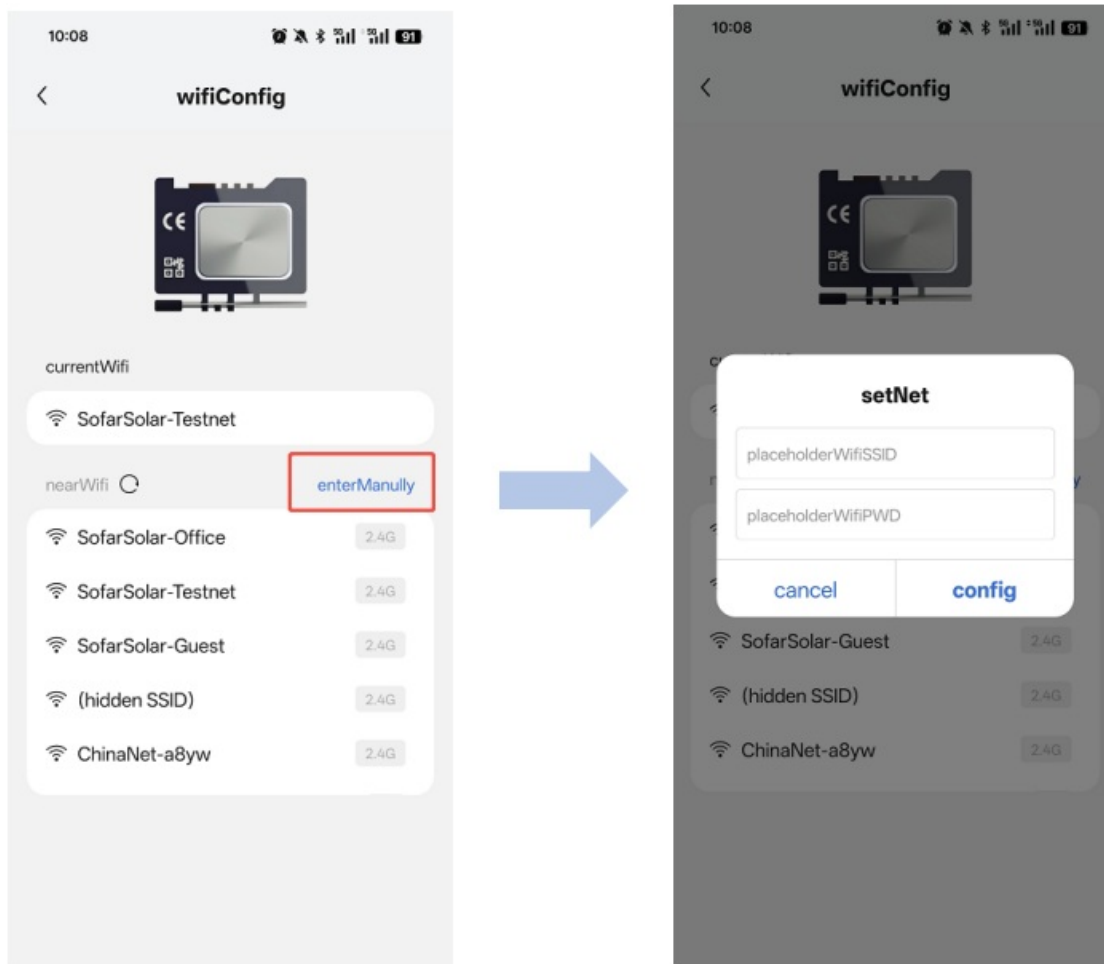
2. Open the SofarCloud App on your smartphone. Go to the Operations and tools screen, then click find Device.



3. Ensure Bluetooth is enabled on your smartphone. The app will automatically search for near by devices and display the unit's serial number. Click the right serial number to enter the Connect Device interface.
4. Select the correct Wi-Fi network and enter the password to enable the inverter to connect to the network.



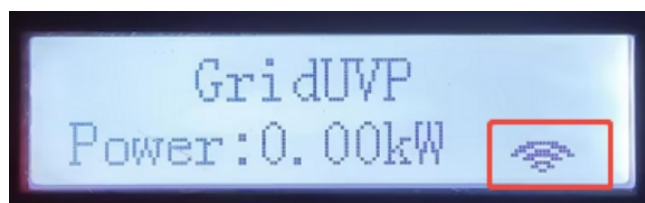
5. If the correct Wi-Fi is not found, you can click Manual Input to pair the inverter by manually entering the Wi-Fi name and password.

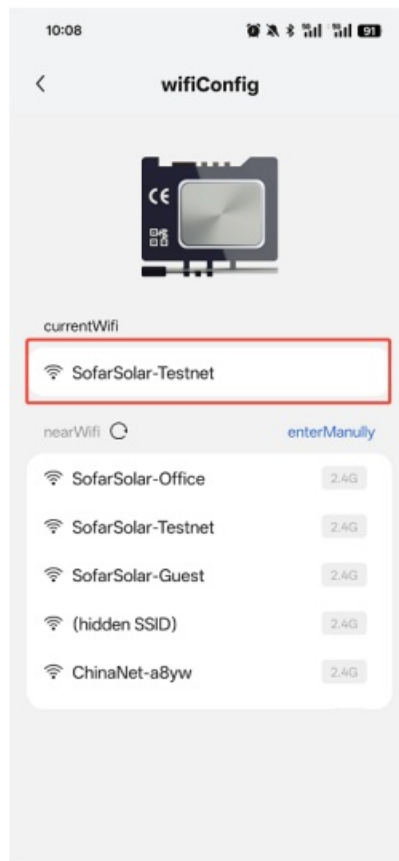


If the inverter fails to pair with SofarCloud, please check for the following issues:

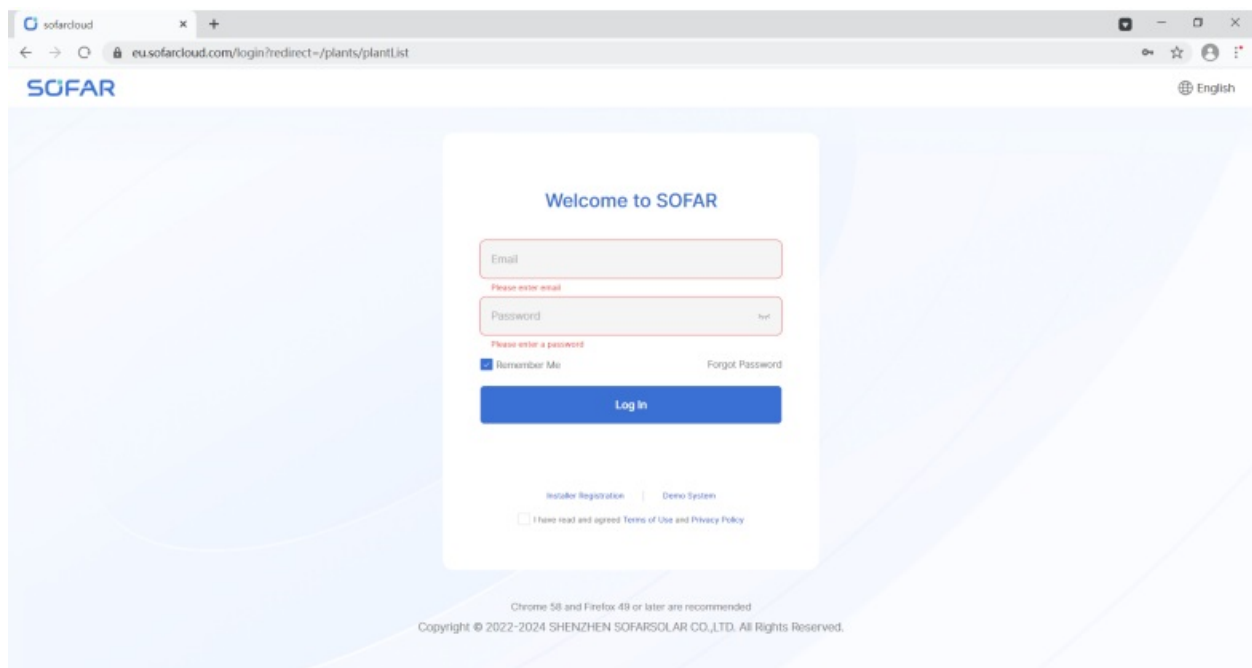
- Make sure your smartphone is as close to the inverter as possible.
- Please ensure that the WiFi signal is stable.
- Please check the firmware version of the inverter.

6. When the inverter is connected to Wi-Fi, the Wi-Fi icon will be shown on the LCD display screen of the inverter, which indicates that the inverter has established a connection with SofarCloud via the Wi-Fi network. The SofarCloud App also displays connected Wi-Fi in the 'Connecting Device' screen.

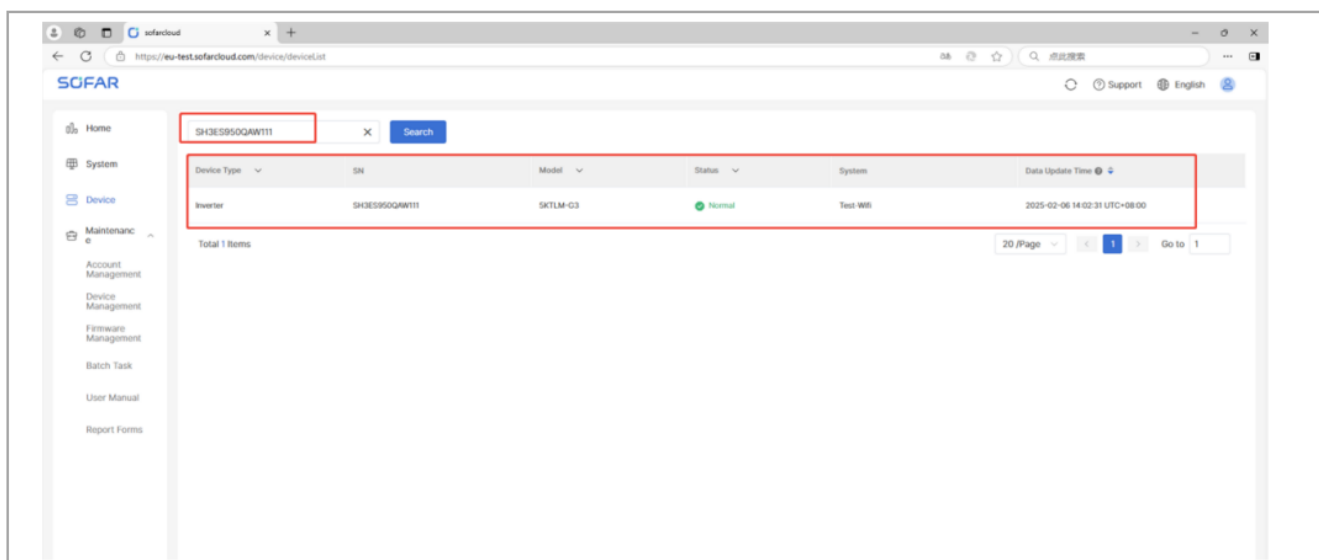




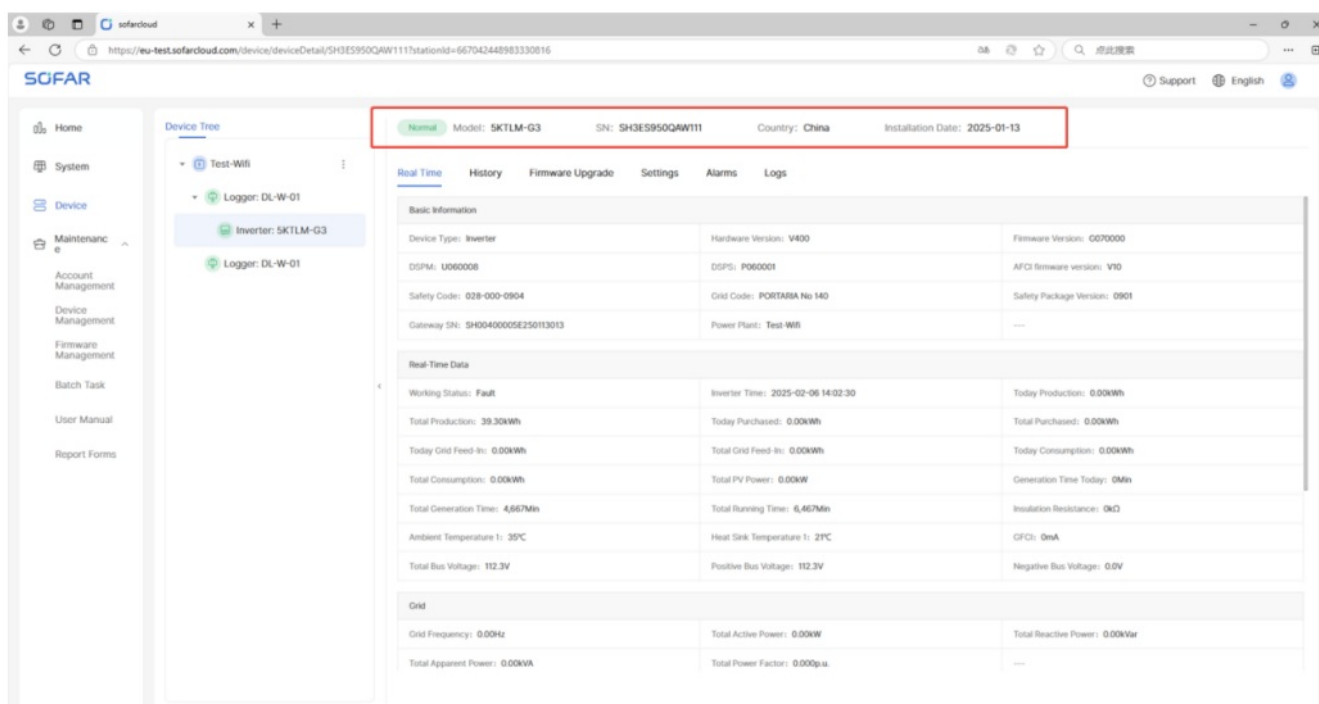
7. Consult the website at: <http://eu.sofarcloud.com>, then enter the account and password to enter the SofarCloud Platform



8. Click “Device” in the catalogue column, search the serial number of the inverter in this interface, you can show the real-time status of the inverter.



9. By clicking on a searched device, you can view various information such as real-time data of the inverter. At the same time, you can also control it remotely, such as software upgrade.



Statement

This document provides information for reference purpose, SOFARSOLAR may change the information at any time without notice. If you have any questions or problems with the practical operation, please contact SOFARSOLAR.

ADDRESS

Shenzhen SOFARSOLAR co., Ltd. II/F, Gaoxinqi Technology Building, District 67, XingDong Community, XinAn Street, Bao District, Shenzhen, China

- EMAIL info@sofarsolar.com
- WEBSITE www.sofarsolar.com

Shenzhen SOFARSOLAR Co., Ltd. 11/F, Gaoxinqi Technology Building, District 67, XingDong Community, XinAn Street, Bao'An District, Shenzhen, China

- Email: service.uk@sofarsolar.com
- Web: www.sofarsolar.com
- Document number Issue 01 | 03.2025 English

FAQs

Q: What should I do if my inverter fails to pair with SofarCloud?

A: If pairing fails, make sure your smartphone is close to the inverter, check Wi-Fi signal stability, and verify the inverter’s firmware version.

Documents / Resources

	SOFAR Built in Wi-Fi Inverter App [pdf] Instruction Manual Built in Wi-Fi Inverter App, Wi-Fi Inverter App, Inverter App, App
---	--

References

-  [SOFAR-Energy to Power Your Life](#)
- [User Manual](#)

[Manuals+](#), [Privacy Policy](#)

This website is an independent publication and is neither affiliated with nor endorsed by any of the trademark owners. The "Bluetooth®" word mark and logos are registered trademarks owned by Bluetooth SIG, Inc. The "Wi-Fi®" word mark and logos are registered trademarks owned by the Wi-Fi Alliance. Any use of these marks on this website does not imply any affiliation with or endorsement.