



Sofabaton U2 Bluetooth Remote Controller User Manual

[Home](#) » [sofabaton](#) » Sofabaton U2 Bluetooth Remote Controller User Manual 



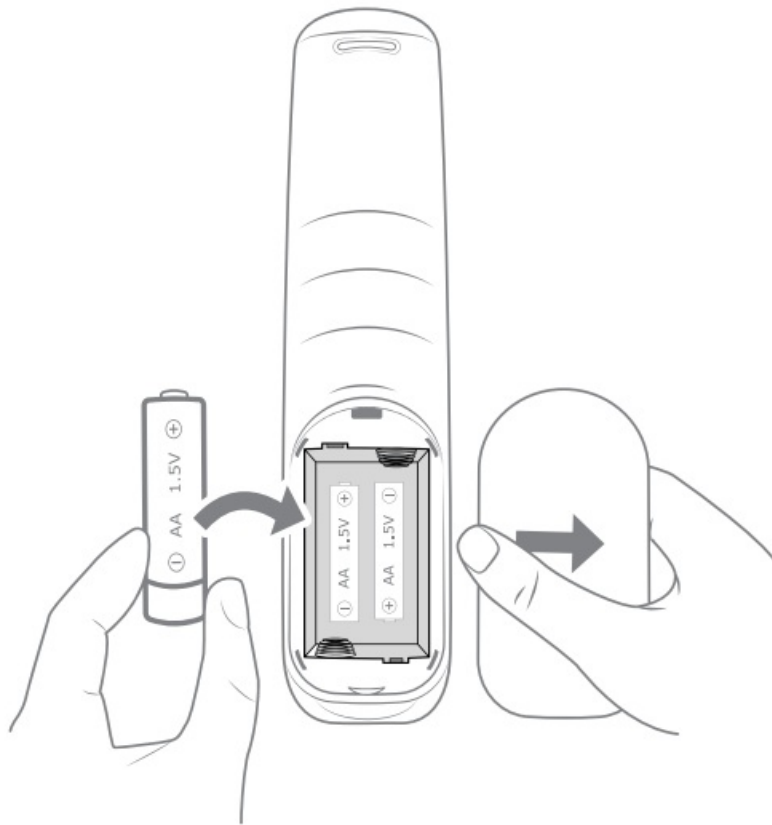
U2 Bluetooth Remote Controller



Contents

- 1 Load Batteries
- 2 Download “SofaBaton” App
- 3 Connect Remote
- 4 Add Device
- 5 Via IR Learning Mode
- 6 Via IR Matching Mode
- 7 Via Bluetooth Mode
- 8 Upon adding new devices
- 9 Start Using
- 10 Documents / Resources
 - 10.1 References

Load Batteries



Download “SofaBaton” App

Search “SofaBaton” on App Store or Google Play

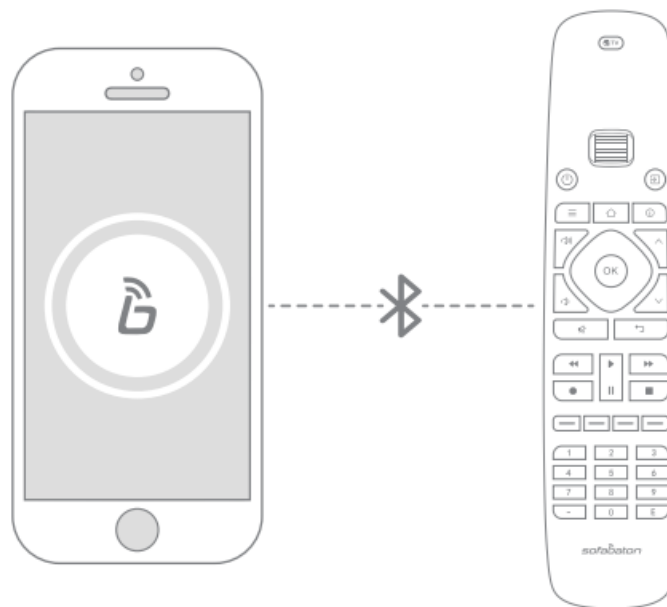


<https://apps.apple.com/us/app/sofabaton/id1456346952>

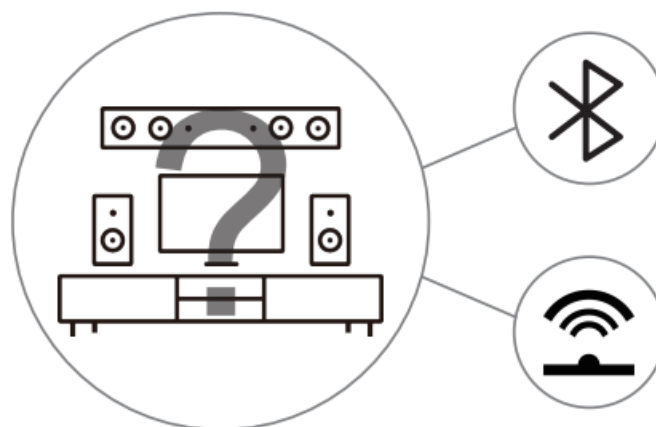


<https://play.google.com/store/apps/details?id=www.romateck.com.u1>

Connect Remote



Add Device



1. Does not support Wifi devices.
2. Some devices are compatible with both IR and Bluetooth

* Determine if your devices support IR or Bluetooth?

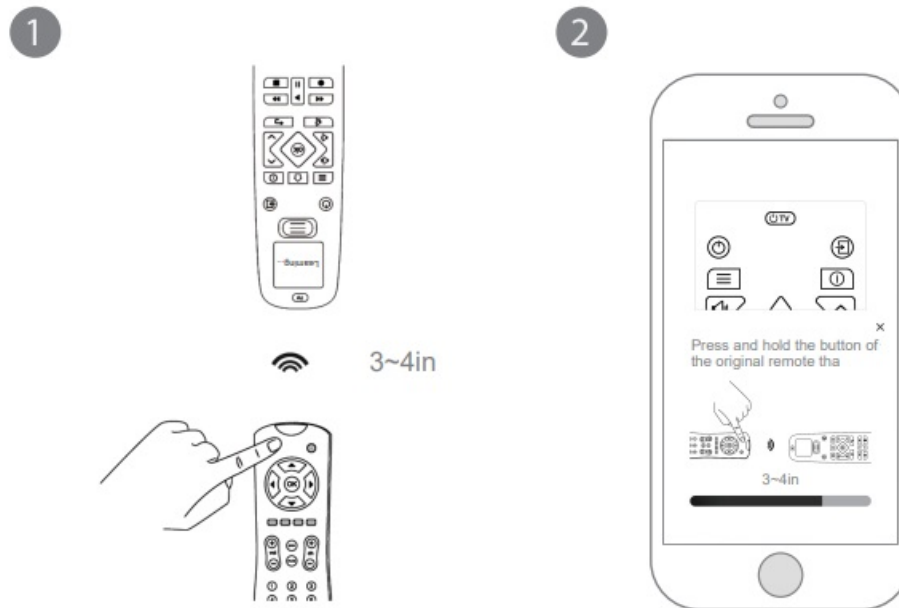
IR:

If you have the original remote, we suggest you jump to step 5, otherwise jump to step 6.

Bluetooth:

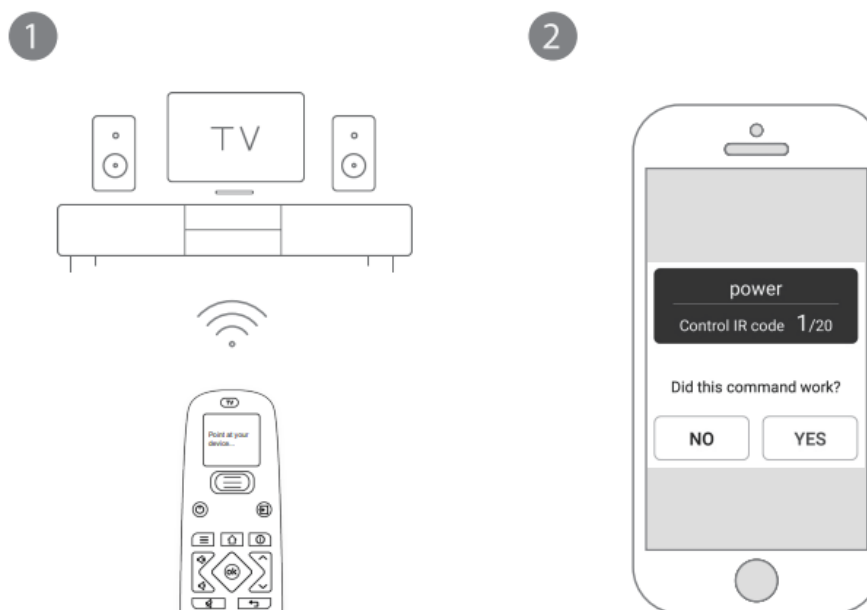
Bluetooth devices users please go to step 7 directly.

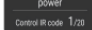
Via IR Learning Mode



* Keep the U2 remote in line-of-sight with your original remote. Select the icon for the function key that needs to be copied, then long press the corresponding function key on the original remote. If the app notifies you that the process was successful, it means the copying is complete. If not, please try again.

Via IR Matching Mode



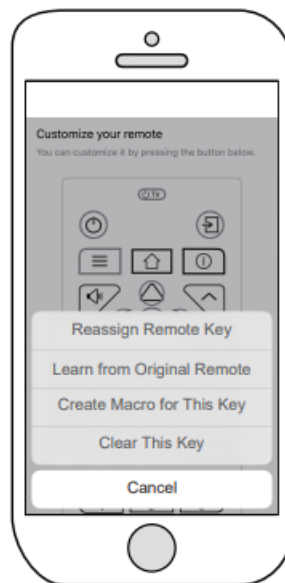
* Keep the U2 remote in line-of-sight with your device. Clicks the  first, then choose Yes or No to see if it works. During the process, the U2 remote control will emit infrared signals to the device. And U2 will be able to find proper code set after searching database.

Via Bluetooth Mode



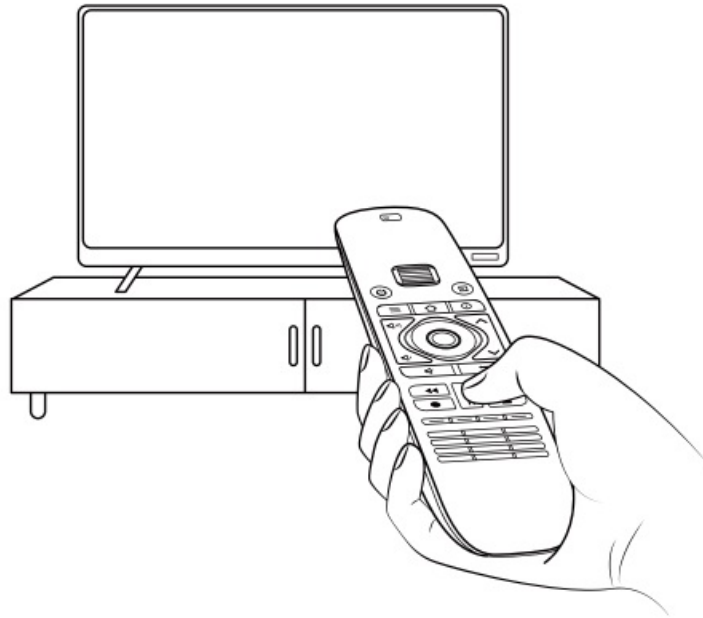
* If you add a new Bluetooth device, the app will first disconnect from your U2. Meanwhile, you can connect your U2 with your phone to complete the remaining steps of adding a new device.

Upon adding new devices



Reassign Remote Keys
Configure Macro Keys

Start Using



* Scroll to the desired device on the app and start using it.

Product Name Bluetooth Remote Controller
Model U2
FCC ID 2AXDU-U2
FCC WARNING

This device complies with part 15 of the FCC Rules.

Operation is subject to the following two conditions: (1) this device may not cause harmful interference, and (2) this device must accept any interference received, including interference that may cause undesired operation. Any changes or modifications not expressly approved by the party responsible for compliance could void the user's authority to operate the equipment.

NOTE

This equipment has been tested and found to comply with the limits for a Class B digital device, pursuant to Part 15 of the FCC Rules. These limits are designed to provide reasonable protection against harmful interference in a residential installation. This equipment generates, uses and can radiate radio frequency energy and, if not installed and used in accordance with the instructions, may cause harmful interference to radio communications.

However, there is no guarantee that interference will not occur in a particular installation.

If this equipment does cause harmful interference to radio or television reception, which can be determined by turning the equipment off and on, the user is encouraged to try to correct the interference by one or more of the following measures:

- Reorient or relocate the receiving antenna.
- Increase the separation between the equipment and receiver.
- Connect the equipment into an outlet on a circuit different from that to which the receiver is connected.
- Consult the dealer or an experienced radio/TV technician for help.
- Connect the equipment into an outlet on a circuit different from that to which the receiver is connected.
- Consult the dealer or an experienced radio/TV technician for help.

The device has been evaluated to meet general RF exposure requirement. The device can be used in portable exposure condition without restriction.

IC Caution:

RSS-Gen Issue 5 “&” RSS-Gen numéro 5

This device contains licence-exempt transmitter(s)/receiver(s) that comply with Innovation, Science and Economic Development Canada's licence-exempt RSS(s).

Operation is subject to the following two conditions: (1) This device may not cause interference. (2) This device must accept any interference, including interference that may cause undesired operation of the device.

Any changes or modifications not expressly approved by the party responsible for compliance could void the user's authority to operate the equipment. RF exposure statement:

The equipment complies with IC Radiation exposure limit set forth for uncontrolled environment. This equipment should be installed and operated with minimum distance 20cm between the radiator and your body.



Contact Support Team

Submit a Ticket



https://furuiqi.s5.udesk.cn/ticket_sdk/feedback.html?form=3&language=en-us

Live Chat



https://furuiqi.s5.udesk.cn/im_client/?web_plugin_id=1821&language=en-us

Advice and Complaints:

✉ Service@sofabaton.com


Our friendly customer service team will work hard to put a smile back on your face.

Visit sofabaton.com for more information



PNU21503040037

Documents / Resources

	<p>Sofabaton U2 Bluetooth Remote Controller [pdf] User Manual</p> <p>U2 Bluetooth Remote Controller, U2, Bluetooth Remote Controller, Remote Controller, Controller</p>
---	---

References

- [User Manual](#)

[Manuals+](#), [Privacy Policy](#)

This website is an independent publication and is neither affiliated with nor endorsed by any of the trademark owners. The "Bluetooth®" word mark and logos are registered trademarks owned by Bluetooth SIG, Inc. The "Wi-Fi®" word mark and logos are registered trademarks owned by the Wi-Fi Alliance. Any use of these marks on this website does not imply any affiliation with or endorsement.