



sofabaton U1 All-in-One Universal Remote Control User Guide

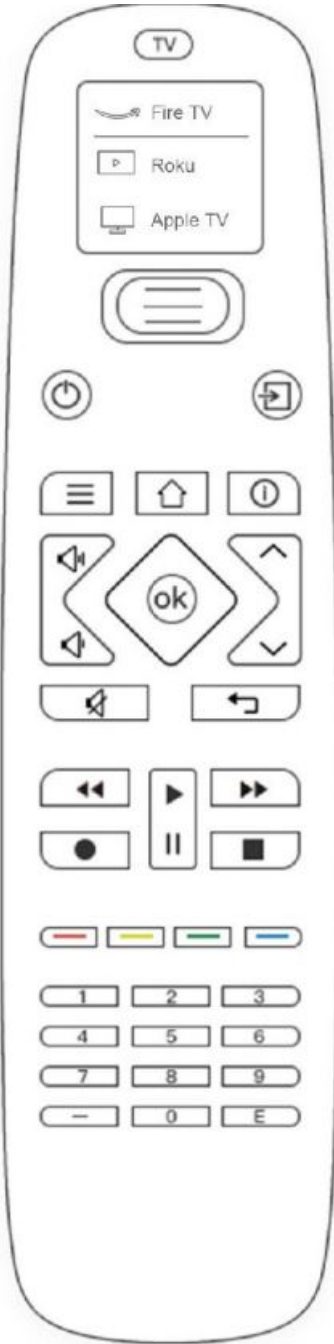
[Home](#) » [sofabaton](#) » **sofabaton U1 All-in-One Universal Remote Control User Guide**



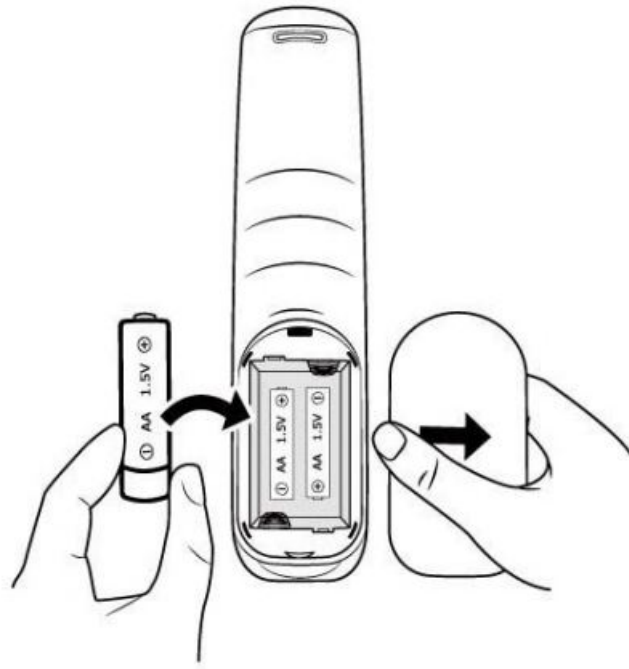
Contents [[hide](#)

- 1 sofabaton-U1-All-in-One-Universal-Remote-Control-7
- 2 Load Batteries
- 3 Download “SofaBaton” App
- 4 Connect Remote
- 5 Add Device
- 6 Via IR Learning Mode
- 7 Via IR Matching Mode
- 8 Via Bluetooth Mode
- 9 Upon adding new devices
- 10 Start Using
- 11 Documents / Resources
- 12 Related Posts

sofabaton-U1-All-in-One-Universal-Remote-Control-7



Load Batteries



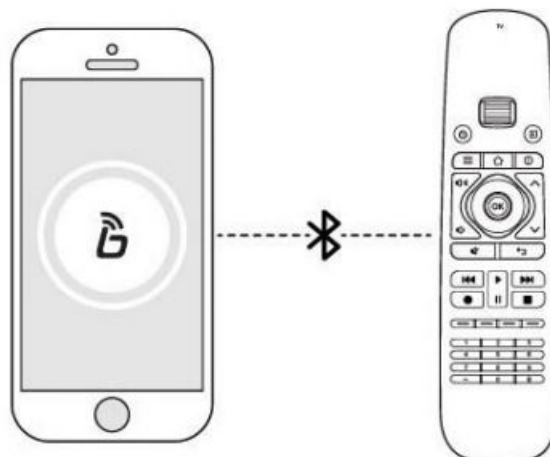
Download “SofaBaton” App



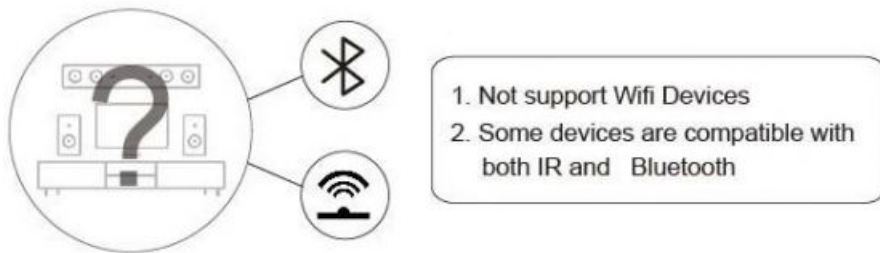
SofaBaton



Connect Remote



Add Device



Determine if your devices support IR or Bluetooth?

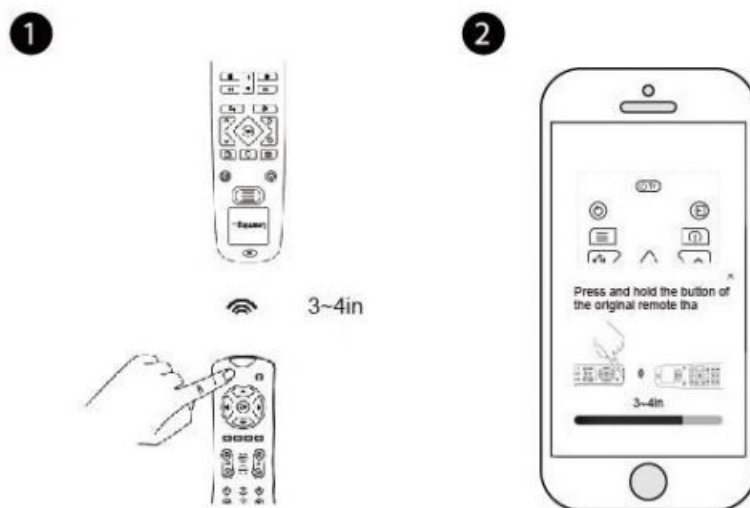
IR:

If you have the original remote, we suggest you jump to step 5, otherwise jump to step 6.

Bluetooth:

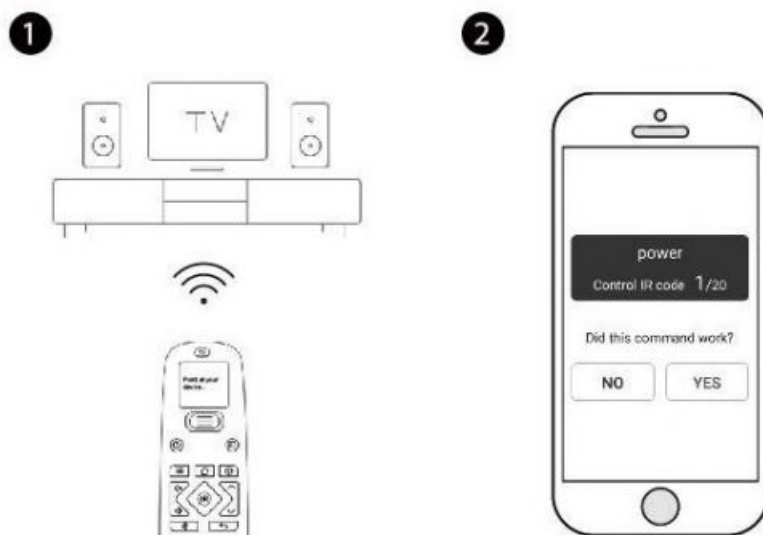
Bluetooth devices users please go to step 7 directly.

Via IR Learning Mode



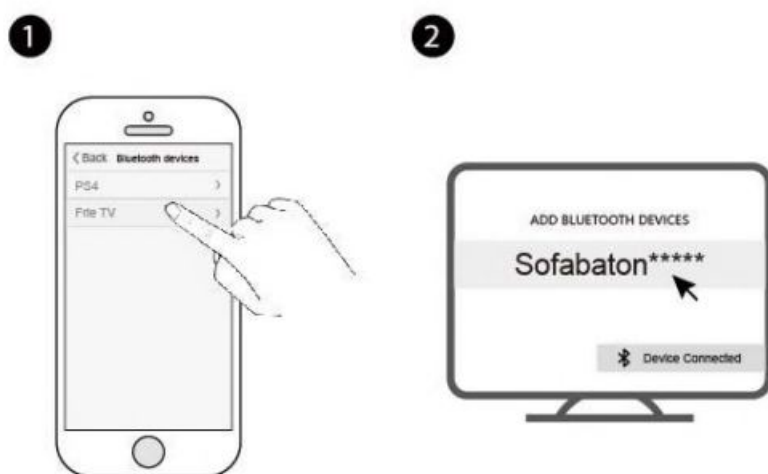
Keep U1 Line-of-Sight with your original remote, and select the Icon of the function key that needs to be copied. Meanwhile, long-press the corresponding function key of the original remote. If the App notifies you it's successful, means completed. If not, please try again.

Via IR Matching Mode



Keep U 1 Line-of-Sight with your device, clicks the firstly, and then choose (Yes) or (Bi) to see if it works. During the process, the U 1 remote control will emit infrared signals to the device. And U1 will be able to find proper code set after searching the database.

Via Bluetooth Mode



If you add a new Bluetooth Device, the App would be disconnected from your U1 first. Meanwhile, you can connect your U1 with your phone to complete the remaining steps of adding a new device.

Upon adding new devices



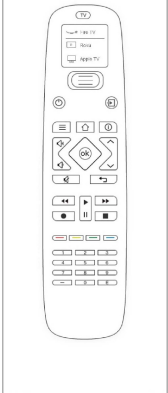
Reassign Remote Keys
Configure Macro Keys

Start Using



Scroll to the desired device and start using it.

Documents / Resources

	<p>sofabaton U1 All-in-One Universal Remote Control [pdf] User Guide U1, All-in-One Universal Remote Control, U1 All-in-One Universal Remote Control</p>
---	--