



# sodastream Source Sparkling Water Maker User Guide

[Home](#) » [Sodastream](#) » sodastream Source Sparkling Water Maker User Guide 

## Contents

[1 sodastream Source Sparkling Water Maker User Guide](#)

[2 OVERVIEW](#)

[3 SET UP](#)

[4 SODASTREAM®/MD CO2 SCREW SYSTEM CYLINDER](#)

[5 CREATE THE BUBBLES](#)

[6 CARE](#)

[6.1 SPARKLING WATER MAKER CARE](#)

[6.2 Note: when inserted correctly, there is a small gap between the bottom of the Carbonating Bottle and the base. Do not carbonate if the Carbonating Bottle is resting on the base, or water will splash out](#)

[6.3 CARBONATING BOTTLE CARE](#)

[6.4 FOR YOUR SAFETY](#)

[6.5 BOTTLE WARNING ICONS](#)

[6.6 Read More About This Manual & Download PDF:](#)

[7 Documents / Resources](#)

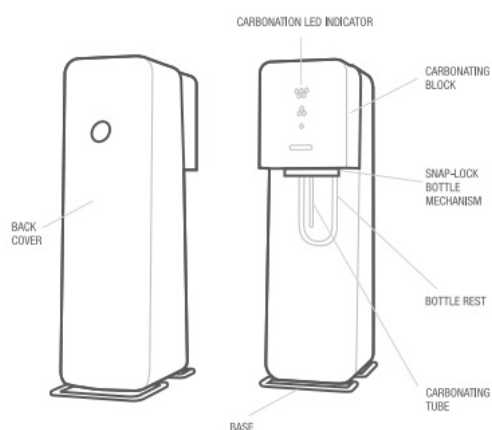
[7.1 References](#)

[8 Related Posts](#)

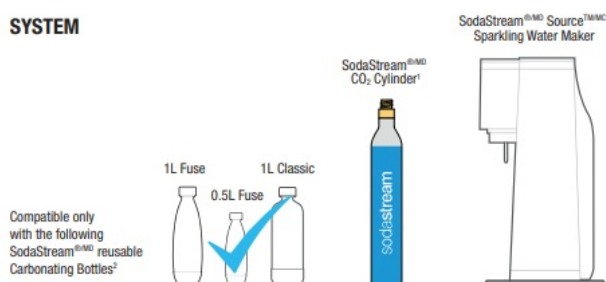
# sodastream Source Sparkling Water Maker User Guide



## OVERVIEW



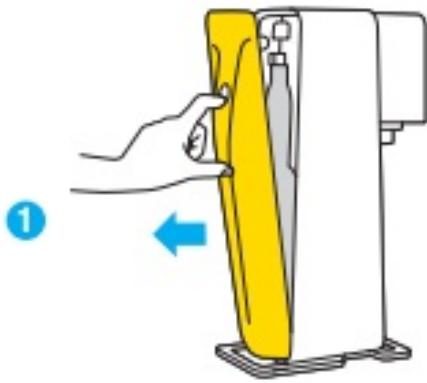
## SYSTEM



## SET UP

### INSTALLING THE CO2 CYLINDER

1. Place the Sparkling Water Maker on a flat sturdy surface and remove the back cover.

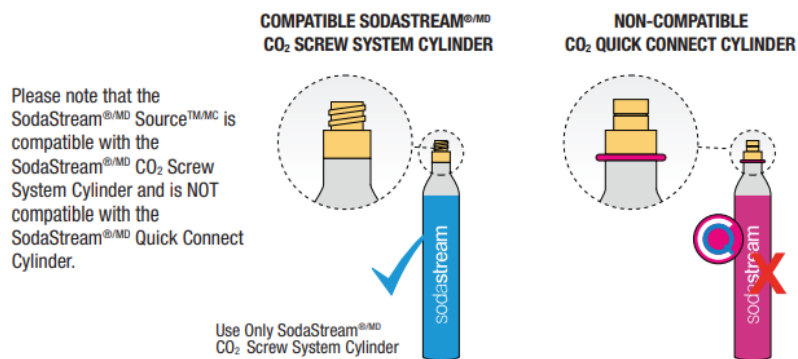


2. Remove seal and cap from the SodaStream CO2 Cylinder. **WARNING!** Never insert or replace the CO2 Cylinder while a Carbonating Bottle is installed in the Sparkling Water Maker. This can cause the Carbonating Bottle to be ejected or burst. Tilt the Sparkling Water Maker forward and insert the CO2 Cylinder in the back of the Sparkling Water Maker. Gently raise the CO2 Cylinder and tighten by turning to the right until it is firmly held in place.
- WARNING!** Hand-tighten only. **DO NOT** use tools; this can damage the Sparkling Water Maker or CO2 Cylinder. This may result in an uncontrolled flow of CO2 gas, causing the Carbonating Bottle to burst and result in personal injury or property damage.



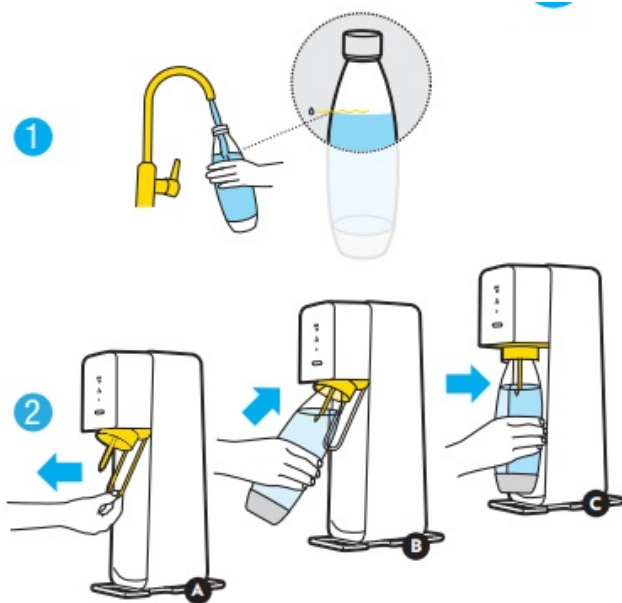
3. Reinstall the back cover. Now you are ready to create the bubbles.





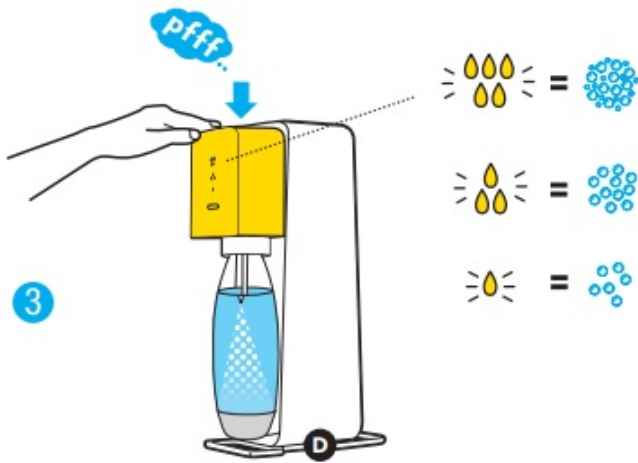
## CREATE THE BUBBLES

1. Fill the Carbonating Bottle with cold water up to the fill line.

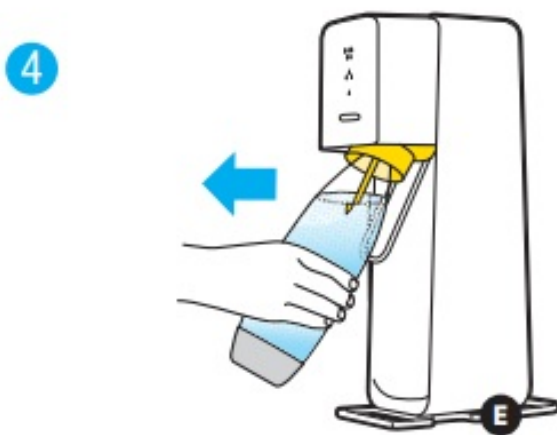


**WARNING!** Do not carbonate anything other than water. Other liquids can contaminate and clog internal parts, potentially resulting in excessive pressure, bottle failure during carbonation and serious injury. Never carbonate after flavoring has been added.

2. To insert the Carbonating Bottle, make sure that the Carbonating Bottle rest is angled forward. Please make sure you do not pull the carbonating tube. **WARNING!** Never use a Sparkling Water Maker with a broken carbonating tube. This can cause excessive pressure, bottle failure and serious injury. Insert the Carbonating Bottle neck into the Snap-Lock. Push the Carbonating Bottle up and back. The Snap-Lock will hold the Carbonating Bottle.



3. . When the desired level of carbonation is achieved, gently pull the Carbonating Bottle towards you until it reaches its fully forward position. This will release the pressure in the Carbonating Bottle and allow the Carbonating Bottle to be released from the Snap-Lock.
- WARNING!** Do not remove Carbonating Bottle until after hearing the sound of excess CO<sub>2</sub> being released. Never force the Carbonating Bottle out of the Snap-Lock. Always allow the Sparkling Water Maker to release the Carbonating Bottle. If the Carbonating Bottle does not immediately release from the Snap-Lock wait a few moments. If it still does not release, then push the Carbonating Bottle back into the vertical position and gently pull it towards you again. Attempting to remove the Carbonating Bottle while it is still pressurized can cause uncontrolled ejection of the Carbonating Bottle and may result in serious injury



## CARE

### SPARKLING WATER MAKER CARE

**Note:** when inserted correctly, there is a small gap between the bottom of the Carbonating Bottle and the base. Do not carbonate if the Carbonating Bottle is resting on the base, or water will splash out

**Note:** You may see small pieces of ice appear in the water during carbonation of very cold water. Any ice created will simply melt.

- Never use abrasive cleaners or sharp tools to If needed, use a mild liquid dish soap and a soft damp cloth to gently clean.
- Wipe spills to keep base

- Do not place in water or wash in a dishwasher, doing so will seriously damage your Sparkling Water

## CARBONATING BOTTLE CARE

- For Carbonating Bottles which are not “dishwasher safe”, to clean, rinse Carbonating Bottles with cold or lukewarm **WARNING! Do not expose to heat above 120°F / 50°C. Never wash or rinse in hot water. Do not wash in dishwasher.**
- For “dishwasher safe” Carbonating Bottles, to clean, either wash in dishwasher or rinse Carbonating Bottles with cold or lukewarm **WARNING! Do not expose to heat above 158°F / 70°C.**

## FOR YOUR SAFETY

SAVE THESE INSTRUCTIONS AND PROVIDE THEM TO ANY SUBSEQUENT USERS.

**WARNING! Before using the Sparkling Water Maker, to reduce risk of personal injury and damage to your product, please read this important safety information.**

Before allowing anyone to use your Sparkling Water Maker, please be sure they understand how to do so safely. Any servicing or repair should be performed by a SodaStream-authorized service representative.

The Sparkling Water Maker is only intended for use by people over the age of 12. People with reduced physical or mental capabilities should only use the product if they are supervised by an adult responsible for their safety and after they have been given instruction concerning the safe use of the product.

TO REDUCE THE RISK OF EITHER SERIOUS INJURY OR DAMAGE TO THE SPARKLING WATER MAKER DURING CARBONATION:

- Only use your Sparkling Water Maker in its upright position, on a flat, stable
- Do not place your Sparkling Water Maker on a hot surface (e.g. kitchen oven/stove) and never use it close to a flame or leave in direct
- Carbonate water
- Do not add flavor before Other liquids (except water) can contaminate and clog internal parts, potentially resulting in excessive pressure and bottle failure during carbonation.
- Do not use the machine if the carbonating tube is broken or
- Check that your Plastic Carbonating Bottle is properly connected before
- Do not move your Sparkling Water Maker or remove the Plastic Carbonating Bottle during
- Do not carbonate an empty Plastic Carbonating

## CARBON DIOXIDE CO2 CYLINDER

To reduce the risk of a CO2 leak, personal injury and property damage:

- Do not insert a CO2 Cylinder into the Sparkling Water Maker when a Plastic Carbonating Bottle is
- Do not use if Inspect the CO2 Cylinder and CO2 Cylinder valve prior to use for dents, punctures, or other damage. If damaged, contact a SodaStream-authorized service representative.
- Do not tamper with the CO2 Cylinder in any way, including puncturing, incinerating or removing the

- Do not expose the CO2 Cylinder to heat above 120°F / 50°C. Protect from Store in a well-ventilated area.
- Do not remove a CO2 Cylinder from the Sparkling Water Maker when it is being
- Do not handle or remove a CO2 Cylinder while it is discharging CO2.
- In the event of a CO2 leak, ventilate the area, breathe fresh air and if feeling unwell seek immediate medical

## PLASTIC CARBONATING BOTTLE

To reduce the risk of bottle failure which can result in personal injury and property damage:

- For Plastic Carbonating Bottles not marked as “dishwasher safe”, do not expose to heat above 120°F/50°C. Never wash or rinse in hot Do not wash in dishwasher.
- For “dishwasher safe” Plastic Carbonating Bottles, do not expose to heat above 158°F / 70°C.
- Do not place the Plastic Carbonating Bottle next to a heat source such as your kitchen oven/stove.
- Do not leave the Plastic Carbonating Bottle in your
- Do not place the Plastic Carbonating Bottle in the freezer or in extreme cold below 34°F / 1°C.
- Do not use the Plastic Carbonating Bottle if damaged, deformed, changes in shape, scratched, worn, or
- Do not use a Plastic Carbonating Bottle after its expiration

Only carbonate with Plastic Carbonating Bottles specifically designed to work with this Sparkling Water Maker, as shown on page 4

## BOTTLE WARNING ICONS



Read the manual



Bottle failure may result  
in personal injury



Never use after  
expiry date



Never wash  
in dishwasher



Never expose to temperatures  
above 120°F / 50°C  
or below 34°F / 1°C



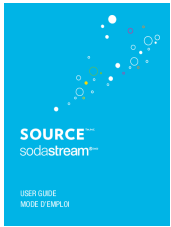
Carbonate  
water only



Never use if damaged  
or deformed

***Read More About This Manual & Download PDF:***

**Documents / Resources**



[sodastream Source Sparkling Water Maker](#) [pdf] User Guide  
Source Sparkling Water Maker, Source, Sparkling Water Maker, Water Maker, Maker

## References

- [More Than Just Sparkling Water Makers – SodaStream Canada](#)
- [SodaStream Official: Sparkling Water Makers, Carbonating Gas Cylinders](#)