



soda stream Fizzi Sparkling Water Maker with 2 My Only Bottles User Guide

[Home](#) » [soda stream](#) » soda stream Fizzi Sparkling Water Maker with 2 My Only Bottles User Guide 

Contents

- 1 [soda stream Fizzi Sparkling Water Maker with 2 My Only Bottles](#)
- 2 [USER LICENSE](#)
- 3 [SET UP](#)
- 4 [OVERVIEW](#)
- 5 [CARE](#)
- 6 [FOR YOUR SAFETY](#)
 - 6.1 [SAVE THESE INSTRUCTIONS AND PROVIDE THEM TO ANY SUBSEQUENT USERS.](#)
- 7 [SODASTREAM LIMITED WARRANTY](#)
- 8 [TERMS AND CONDITIONS](#)
 - 8.1 [DISPUTE RESOLUTION BY BINDING ARBITRATION](#)
- 9 [PRODUCT DISPOSAL INSTRUCTIONS](#)
- 10 [Documents / Resources](#)
 - 10.1 [References](#)
- 11 [Related Posts](#)

sodastream

soda stream Fizzi Sparkling Water Maker with 2 My Only Bottles



USER LICENSE

FOR ONE SODASTREAM CYLINDER NOT FOR SALE

PROPERTY OF SODA-CLUB (CO2) ATLANTIC GMBH OR ITS AFFILIATES PROVIDED UNDER LICENSE

This is a legally binding document between Soda-Club (CO2) Atlantic GmbH of Switzerland or its affiliates ("SodaStream") and the consumer regarding the right to use a SodaStream CO2 Cylinder (the "Cylinder"). To protect users' safety and health, various directives and regulations govern and regulate the use, refilling, maintenance, retesting and repair of the Cylinder. SodaStream possesses the legally required knowledge and expertise to be responsible for strict legal compliance. This can only be guaranteed if the Cylinder is maintained, examined, retested and refilled by it. Thus, the Cylinder remains the property of SodaStream and is provided under the License.

1. When empty, please return the Cylinder to either SodaStream or an authorized SodaStream distributor in exchange for a full Cylinder, for the price of the gas refill only. This License will continue to bind the use of each subsequent Cylinder.
2. Refilling an empty Cylinder by third parties could be risky. Unauthorized refilling may violate the law and infringes on SodaStream's rights. SodaStream only warrants the safety of Cylinders refilled by it, bearing a Soda-Club/SodaStream tamper-proof valve seal.
3. If you return the Cylinder to SodaStream or an authorized SodaStream distributor, in good condition, without exchanging it for a full one, you will be entitled to a return fee of \$1.
4. The Cylinder, together with this User License, may be transferred to a third party provided the third party agrees to be bound by the conditions and ownership rights expressed herein. Possession of this User License proves the right of its holder to use one Cylinder under the terms herein.

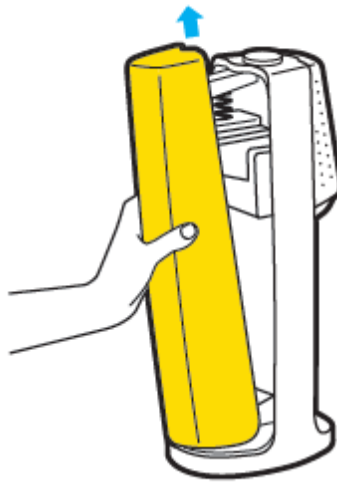
The laws of Switzerland govern this License. For questions, please contact SodaStream International BV, Provinciënbaan 16, 5121 DL RIJEN, The Netherlands.

SET UP

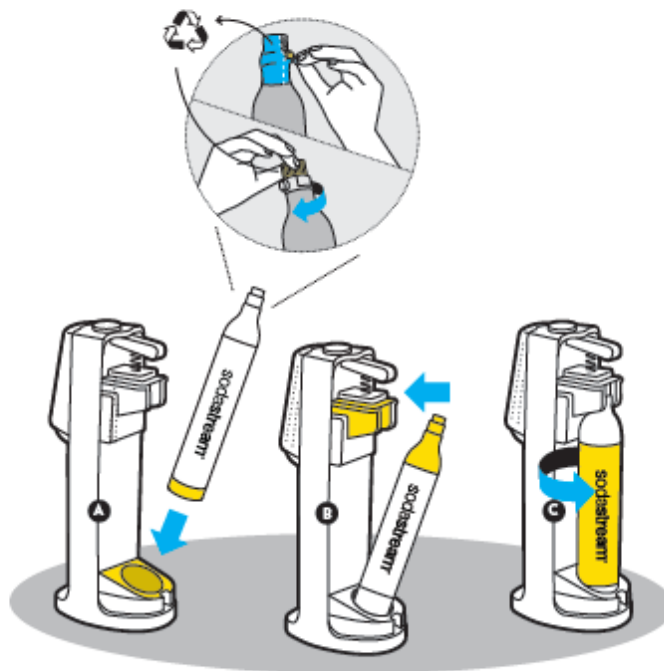
INSTALLING THE CO2 CYLINDER

1. Place the SodaStream® Fizzi™ Sparkling Water Maker on a flat sturdy surface and remove the back cover.
2. Remove seal and cap from the SodaStream CO2 Cylinder. Never insert or replace the CO2 Cylinder while a Carbonating Bottle is installed in the Sparkling Water Maker. This can cause the Carbonating Bottle to be ejected or burst. Tilt the Sparkling Water Maker forward and insert the CO2 Cylinder in the back of the Sparkling Water Maker. Gently raise the CO2 Cylinder and tighten by turning to the right until it is firmly held in place. Hand-tighten only. DO NOT use tools; this can damage the Sparkling Water Maker or CO2 Cylinder. This may result in an uncontrolled flow of CO2 gas, causing the Carbonating Bottle to burst and result in personal injury or property damage.
3. Reinstall the back cover. Now you are ready to create the bubbles.

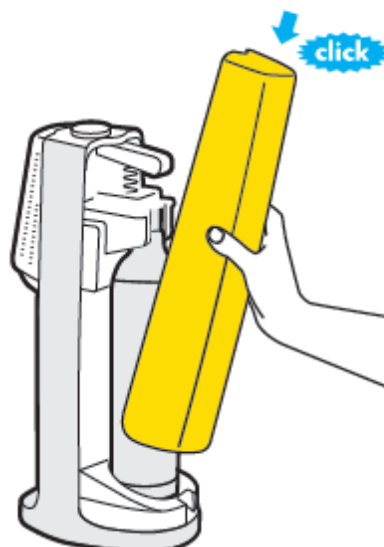
1



2

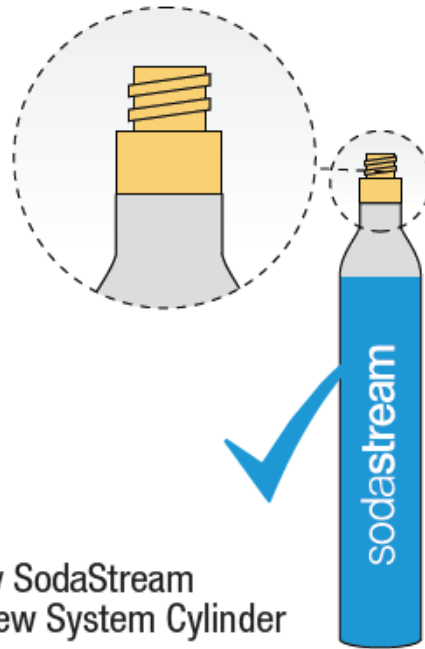


3



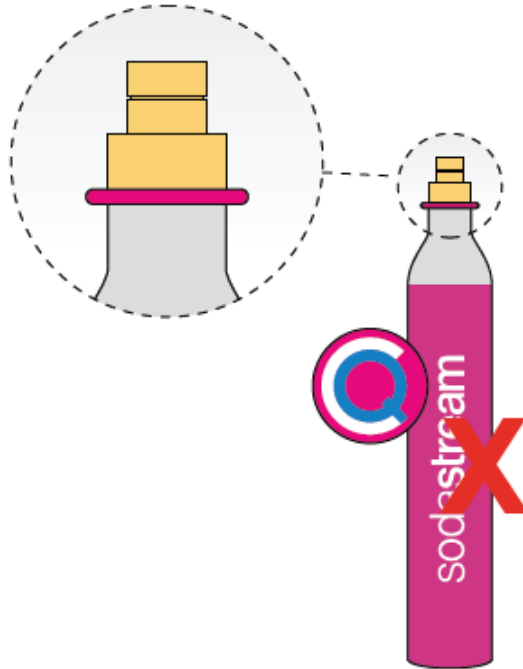
SODASTREAM® CO2 SCREW SYSTEM CYLINDER

- Please note that the SodaStream® Fizzi™ is compatible with the SodaStream® CO2 Screw System Cylinder and is NOT compatible with the SodaStream® Quick Connect Cylinder.
- COMPATIBLE SODASTREAM® CO2 SCREW SYSTEM CYLINDER

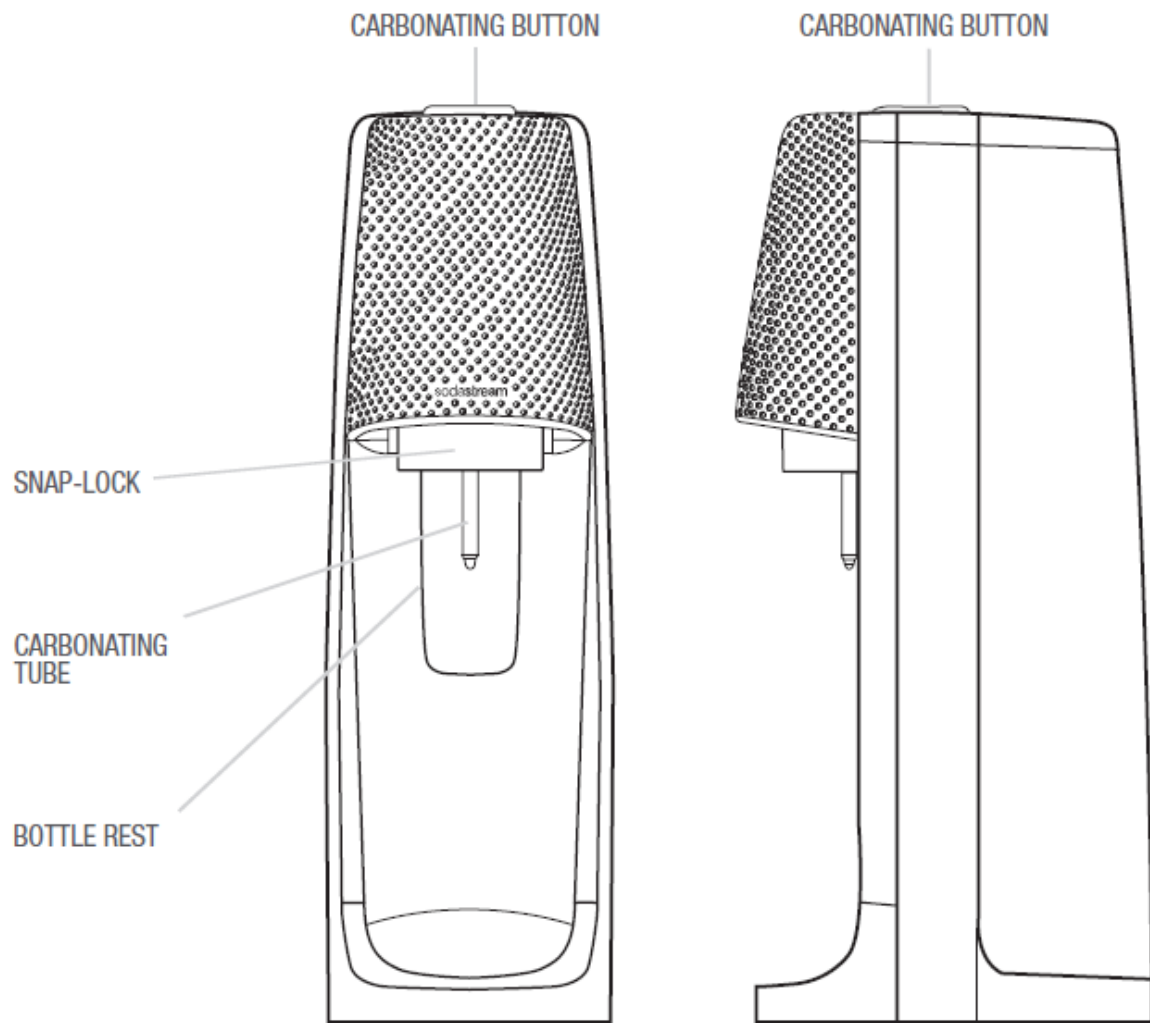


Use Only SodaStream
CO₂ Screw System Cylinder

- NON-COMPATIBLE CO2 QUICK CONNECT CYLINDER



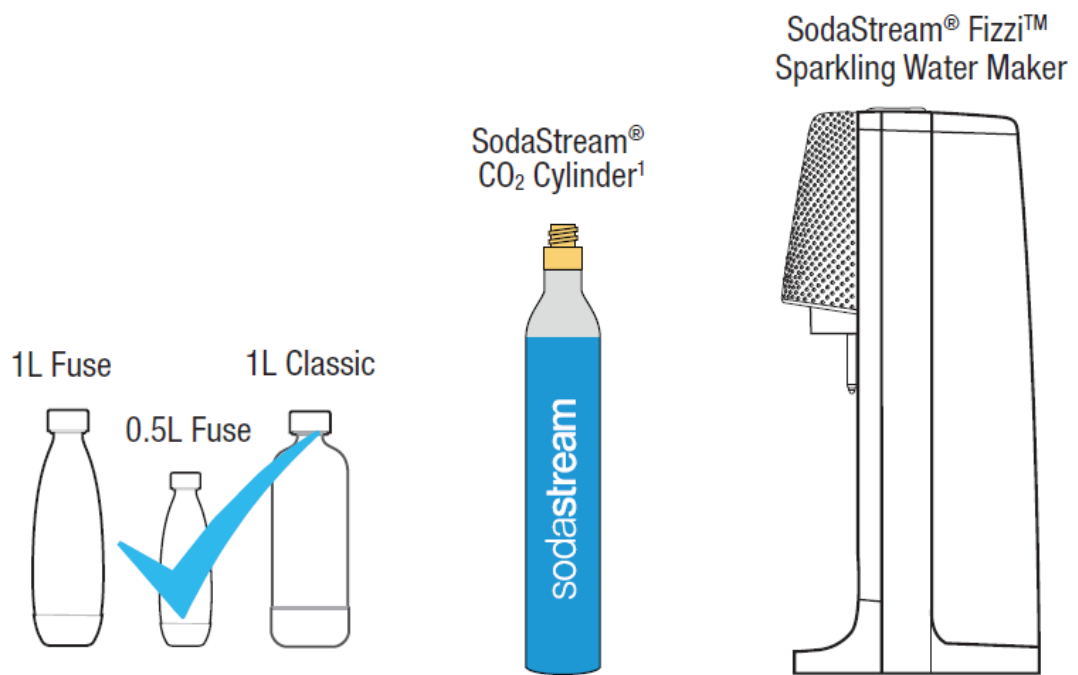
OVERVIEW



SYSTEM

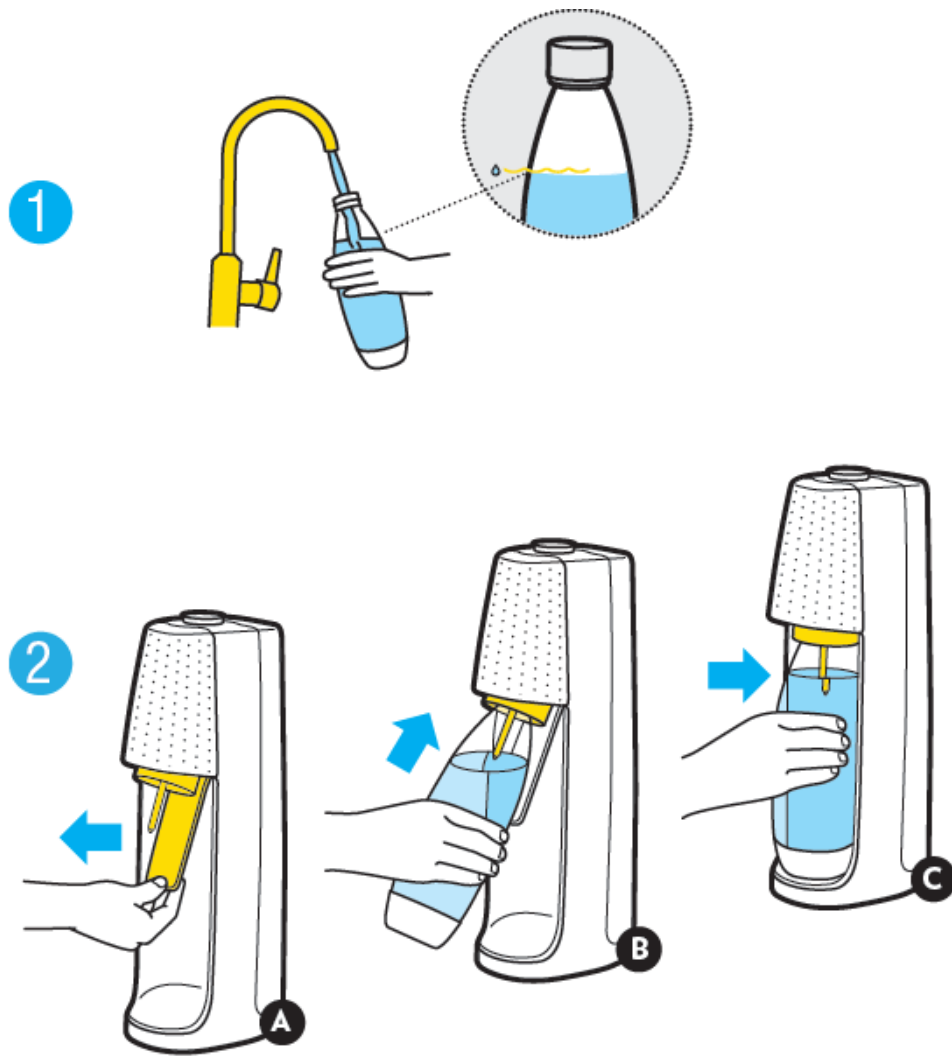
Compatible only with the following SodaStream reusable Carbonating Bottles2

1. 60 L SodaStream® CO2 Cylinder (under license) makes up to 60 L of sparkling water depending on the level of carbonation and type of Sparkling Water Maker.
2. The actual shape of the bottle may differ.



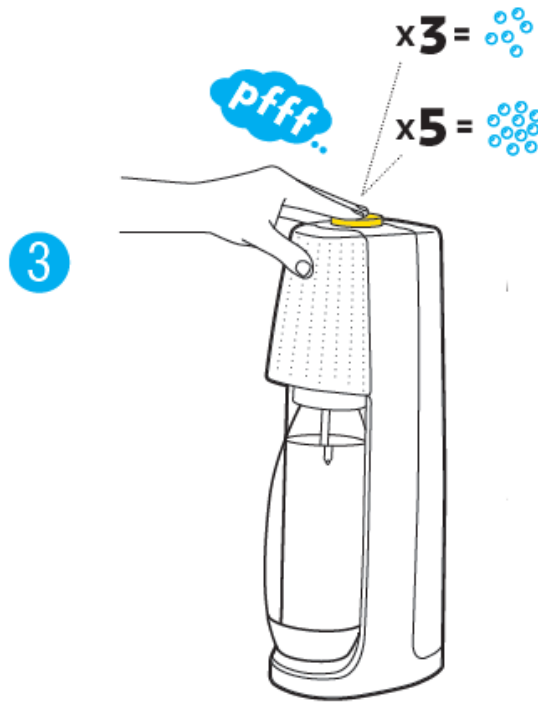
CREATE THE BUBBLES

1. Fill the Carbonating Bottle with cold water up to the fill line. Do not carbonate anything other than water. Other liquids can contaminate and clog internal parts, potentially resulting in excessive pressure, bottle failure during carbonation and serious injury. Never carbonate after flavoring has been added.
2. To insert the Carbonating Bottle, make sure that the Carbonating Bottle rest is angled forward. Please make sure you do not pull the carbonating tube. Never use a Sparkling Water Maker with a broken carbonating tube. This can cause excessive pressure, bottle failure and serious injury. Insert the Carbonating Bottleneck into the Snap-Lock. Push the Carbonating Bottle up and back. The Snap-Lock will hold the Carbonating Bottle.



Note: when inserted correctly, there is a small gap between the bottom of the Carbonating Bottle and the base. Do not carbonate if the Carbonating Bottle is resting on the base, or water will splash out.

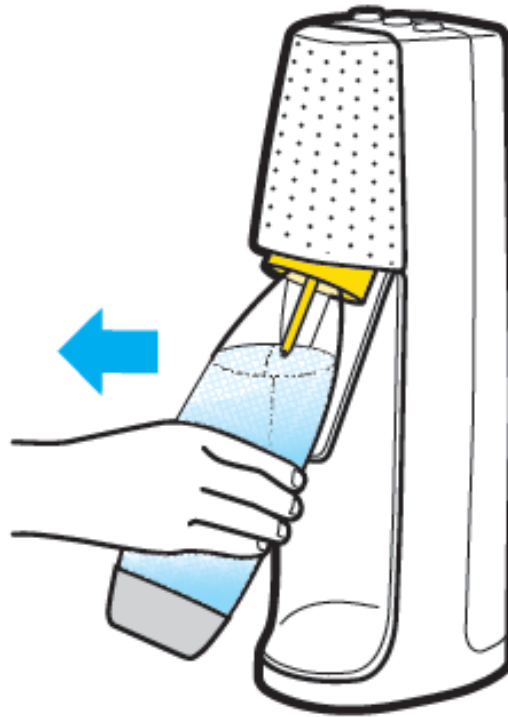
1. To carbonate, press the carbonating button in short 1-second presses; 3 presses for standard carbonation and 5 presses for strong carbonation.



Note: You may see small pieces of ice appear in the water during the carbonation of very cold water. Any ice created will simply melt.

1. When the desired level of carbonation is achieved, gently pull the Carbonating Bottle towards you until it reaches its fully forward position. This will release the pressure in the Carbonating Bottle and allow the Carbonating Bottle to be released from the Snap-Lock. Do not remove Carbonating Bottle until after hearing the sound of excess CO₂ being released. Never force the Carbonating Bottle out of the Snap-Lock. Always allow the Sparkling Water Maker to release the Carbonating Bottle. If the Carbonating Bottle does not immediately release from the Snap-Lock wait a few moments. If it still does not release, then push the Carbonating Bottle back into the vertical position and gently pull it towards you again. Attempting to remove the Carbonating Bottle while it is still pressurized can cause uncontrolled ejection of the Carbonating Bottle and may result in serious injury.

4



CARE

SPARKLING WATER MAKER CARE

- Never use abrasive cleaners or sharp tools to clean. If needed, use mild liquid dish soap and a soft damp cloth to gently clean.
- Wipe spills to keep base dry.
- Do not place in water or wash in a dishwasher, doing so will seriously damage your Sparkling Water Maker.

CARBONATING BOTTLE CARE

- For Carbonating Bottles that are not “dishwasher safe”, to clean, rinse Carbonating Bottles with cold or lukewarm water. **WARNING!** Do not expose to heat above 50°C. Never wash or rinse in hot water. Do not wash in the dishwasher.
- For “dishwasher safe” Carbonating Bottles, to clean, either wash in the dishwasher or rinse Carbonating Bottles with cold or lukewarm water. **WARNING!** Do not expose to heat above 70°C.

FOR YOUR SAFETY

SAVE THESE INSTRUCTIONS AND PROVIDE THEM TO ANY SUBSEQUENT USERS.

WARNING

Before using the Sparkling Water Maker, to reduce risk of personal injury and damage to your product, please read this important safety information.

Before allowing anyone to use your Sparkling Water Maker, please be sure they understand how to do so safely. Any servicing or repair should be performed by a SodaStream-authorized service representative. The Sparkling Water Maker is only intended for use by people over the age of 12. People with reduced physical or mental capabilities should only use the product if they are supervised by an adult responsible for their safety and after

they have been given instruction concerning the safe use of the product.

TO REDUCE THE RISK OF EITHER SERIOUS INJURY OR DAMAGE TO THE SPARKLING WATER MAKER DURING CARBONATION

- Only use your Sparkling Water Maker in its upright position, on a flat, stable surface.
- Do not place your Sparkling Water Maker on a hot surface (e.g. kitchen oven/stove) and never use it close to a flame or leave in direct sunlight.
- Carbonate water only.
- Do not add flavor before carbonation. Other liquids (except water) can contaminate and clog internal parts, potentially resulting in excessive pressure and bottle failure during carbonation.
- Do not use the machine if the carbonating tube is broken or missing.
- Check that your Carbonating Bottle is properly connected before carbonating.
- Do not move your Sparkling Water Maker or remove the Carbonating Bottle during carbonation.
- Do not carbonate an empty Carbonating Bottle.

CARBON DIOXIDE CO2 CYLINDER

To reduce the risk of a CO2 leak, personal injury and property damage:

- Do not insert a CO2 Cylinder into the Sparkling Water Maker when a Carbonating Bottle is installed.
- Do not use if damaged. Inspect the CO2 Cylinder and CO2 Cylinder valve prior to use for dents, punctures, or other damage. If damaged, contact a SodaStream-authorized service representative.
- Do not tamper with the CO2 Cylinder in any way, including puncturing, incinerating or removing the valve.
- Do not expose the CO2 Cylinder to heat above 120°F / 50°C. Protect from sunlight. Store in a well-ventilated area.
- Do not remove a CO2 Cylinder from the Sparkling Water Maker when it is being operated.
- Do not handle or remove a CO2 Cylinder while it is discharging CO2.
- In the event of a CO2 leak, ventilate the area, breathe fresh air and if feeling unwell seek immediate medical attention.

CARBONATING BOTTLE

To reduce the risk of bottle failure which can result in personal injury and property damage:

- For Carbonating Bottles not marked as “dishwasher safe”, do not expose to heat above 50°C. Never wash or rinse in hot water. Do not wash in dishwasher.
- For “dishwasher safe” Carbonating Bottles, do not expose to heat above 70°C.
- Do not place the Carbonating Bottle next to a heat source such as your kitchen oven/stove.
- Do not leave the Carbonating Bottle in your car.
- Do not place the Carbonating Bottle in the freezer or in extreme cold below 1°C.
- Do not use the Carbonating Bottle if damaged, deformed, changes in shape, scratched, worn, or discolored.
- Do not use a Carbonating Bottle after its expiration date.
- Only carbonate with Carbonating Bottles specifically designed to work with this Sparkling Water Maker, as shown on page 4 above.

SODASTREAM LIMITED WARRANTY

SODASTREAM SPARKLING WATER MAKERS

Great care has been taken to ensure that your Sparkling Water Maker was delivered to you in good condition. SodaStream warrants, subject to the terms and conditions set forth in this limited warranty, that your Sparkling Water Maker will be free of defects in materials and workmanship under normal home use for 2 (two) years following the date of purchase. It is recommended that you register your Sparkling Water Maker online by visiting www.sodastream.com and completing the product registration form available on the website.

If your Sparkling Water Maker malfunctions within the warranty period, and we determine the problem is due to faulty workmanship or materials, SodaStream will repair or replace it free of charge at SodaStream's discretion within the limitations set out in this warranty. SodaStream may replace your Sparkling Water Maker with a reconditioned Sparkling Water Maker, or an equivalent one if the model you purchased is no longer available. No refunds shall be given. This limited warranty is available to consumers who purchased the Sparkling Water Maker for personal, family or household use.

This warranty DOES NOT cover damages to Sparkling Water Maker resulting from

- Abuse, misuse, alteration of the Sparkling Water Maker, or commercial use.
- carbonating liquids other than water.
- Normal wear and tear (e.g. discoloration).
- Product malfunctions that were a result, in whole or in part, by alteration, disassembly, or repair of the Sparkling Water Maker by a servicer other than an authorized SodaStream Service Center.
- the use of CO2 Cylinders or carbonating bottles other than those approved by SodaStream for use with your Sparkling Water Maker.
- the use of the Sparkling Water Maker with an adapter connected to the Cylinder valve or to the Sparkling Water Maker.
- the use of an expired Carbonating Bottle.
- accident, shipment or anything other than normal household use.

This warranty DOES NOT cover the Carbonating Bottles and CO2 Cylinders

SodaStream is not liable for incidental or consequential damages. The consumer's sole and exclusive remedy shall be repair or replacement according to the terms and conditions of this warranty. Some local laws do not allow the exclusion or limitation of these damages, so these exclusions may not apply to you. To the extent that this warranty is inconsistent with local law, this warranty shall be deemed modified to be consistent with such local law.

You may also have other rights, which vary in accordance with local laws. The benefits given to the consumer by this warranty are in addition to other rights and remedies that may be afforded to the consumer by law in relation to this Sparkling Water Maker.

TO OBTAIN WARRANTY SERVICE FOR YOUR SPARKLING WATER MAKER

If your Sparkling Water Maker is in need of warranty service, please contact SodaStream Customer Service by visiting www.sodastream.com. A SodaStream representative will give you specific instructions on how to arrange for the shipment of your Sparkling Water Maker, at your expense, to one of our authorized service centers. Only SodaStream, or its agents, are authorized to provide warranty repairs or service to your Sparkling Water Maker.

NON-WARRANTY SERVICE

If SodaStream or its authorized agents determine that the malfunction or damage to your Sparkling Water Maker is not covered by the warranty, SodaStream will repair the Sparkling Water Maker only upon payment of the

determined repair charge.

FOR CALIFORNIA RESIDENTS

California residents may also obtain warranty service by returning any malfunctioning Sparkling Water Maker directly to a retail store that sells similar SodaStream products. At the retail store's discretion, it may either replace the Sparkling Water Maker or arrange for shipment to a SodaStream repair facility. Sparkling Water Maker registration is not a prerequisite for warranty protection.

SODASTREAM CO2 CYLINDERS

Your Sparkling Water Maker has been designed to operate with a SodaStream CO2 Cylinder. The use of other CO2 Cylinders is not recommended as they may not be compatible with a SodaStream Sparkling Water Maker. Damages resulting from the use of a cylinder other than a the SodaStream CO2 Cylinder or use of the SodaStream CO2 Cylinder not in accordance with the instructions included in this User Guide are not covered by the warranty.

The SodaStream CO2 Cylinder is provided to you under license. The license allows you to exchange your empty Cylinder for a full one for the price of the CO2 only.

SODASTREAM CARBONATING BOTTLES

Your Sparkling Water Maker has been designed to operate with a compatible SodaStream Carbonating Bottle. Damages resulting from the use of a carbonating bottle other than a compatible SodaStream Carbonating Bottle or use of Carbonating Bottles not in accordance with the instructions included in this User Guide are not covered by the warranty. SodaStream Carbonating Bottles are available from authorized SodaStream retailers.

TERMS AND CONDITIONS

Any and all claims, complaints, demands for judgment or legal actions brought hereunder relating in any way to your Sparkling Water Maker, Carbonating Bottle or CO2 Cylinder shall be governed by, and construed in accordance with, the laws of the State in which the SodaStream Sparkling Water Maker was purchased and will be subject to binding arbitration as set out under the heading "Dispute Resolution by Binding Arbitration".

DISPUTE RESOLUTION BY BINDING ARBITRATION

PLEASE READ CAREFULLY. IT AFFECTS YOUR RIGHTS

1. Any dispute, controversy or claim arising out of or relating to any SodaStream product including, but not limited to, claims of personal injury and/or property damage, shall be submitted to arbitration administered by the American Arbitration Association in accordance to its then existing Consumer Arbitration Rules. The AAA Rules are available online at www.adr.org, or by calling the AAA at 800.778.7879.
2. The Federal Arbitration Act (Title 9 of the U.S. Code) shall govern the interpretation, enforcement, and proceedings relating to this arbitration.
3. Arbitration is more informal than a lawsuit in court. It uses a neutral arbitrator instead of a judge or jury, allows for more limited discovery than in court, and is subject to very limited review by courts. Arbitrators can award the same damages and relief that a court can award. By agreeing to arbitration, the parties understand and agree that they are waiving their rights to maintain other available resolution processes, such as a court action or administrative proceeding, to settle their disputes.
4. Any claim shall be brought only in the party's individual capacity, and shall not in any case be brought by the party as a plaintiff or class member in any purported class or representative proceeding.
5. A party who intends to seek arbitration must first send to the other, by certified mail, a written Notice of Dispute ("Notice"). The Notice to SodaStream should be addressed to SodaStream's Corporate Office set out on www.sodastream.com ("Notice Address"). The Notice must (a) describe the nature and basis of the claim or

- dispute; and (b) set forth the specific relief sought. If an agreement to resolve the claim is not reached within 30 days after the Notice is received, any party may commence an arbitration proceeding. During the arbitration, the amount of any settlement offer made by a party shall not be disclosed to the arbitrator.
6. There shall be one arbitrator. The arbitrator shall have the power to rule on his or her own jurisdiction, including, but not limited to, any objections with respect to the existence, scope, or validity of the arbitration provision or to the arbitrability of any claim or counterclaim.
 7. The arbitrator's award shall be binding on all parties, and judgment upon the award may be entered by any court of competent jurisdiction.

PRODUCT DISPOSAL INSTRUCTIONS

Please recycle your expired and damaged Carbonating Bottles in accordance with local recycling laws. The packaging in which SodaStream products are supplied is made of recyclable materials. Contact your local authority for further information on recycling.

MACHINE RATING INFORMATION

Maximum Working Pressure

- 116 psi/8 bar

Maximum Allowed Operating Temperature

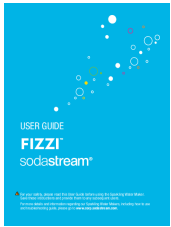
- 104°F/40°C

SodaStream is a registered trademark of Soda-Club (CO2) GmbH or its affiliates.

USA




- Imported by/Importado por
- SodaStream USA, Inc.
- White Plains, NY 10601
- **Customer Support Information**
- 1.800.763.2258
- **Email:** info@sodastreamsupport.com
- www.sodastreamusa.com

Documents / Resources



[soda stream Fizzi Sparkling Water Maker with 2 My Only Bottles](#) [pdf] User Guide
Fizzi Sparkling Water Maker with 2 My Only Bottles

References

-  [American Arbitration Association | ADR.org](#)
-  [SodaStream Official: Sparkling Water Makers, Carbonating Gas Cylinders](#)
-  [SodaStream Official: Sparkling Water Makers, Carbonating Gas Cylinders](#)