



## SOCKET S550 NFC Reader/Writer User Guide

[Home](#) » [Socket](#) » SOCKET S550 NFC Reader/Writer User Guide 



Get Started with your  
SocketScan® S550

Thank you for purchasing the S550, the NFC reader/writer for your app!



- Made for tap-and-go, smart card, and NFC applications
- Reads HF tags and writes lock/unlock tags

- Works with supported applications over Bluetooth Low Energy BLE
- Programmable audible feedback
- Intuitive changeable LEDs



Learn More

Go Green – For manuals, go to [socketmobile.com/downloads](https://socketmobile.com/downloads)

Let's get started with your S550 and compatible app!



\*Compatible apps are created with Socket Mobile's Capture SDK.

## Contents

- 1 Package Contents
- 2 S550 Set Up
- 3 Optional Customization
- 4 Optional Customization
- 5 Attach Security Cable
- 6 Documents / Resources
  - 6.1 References
- 7 Related Posts

## Package Contents



SocketScan  
S550

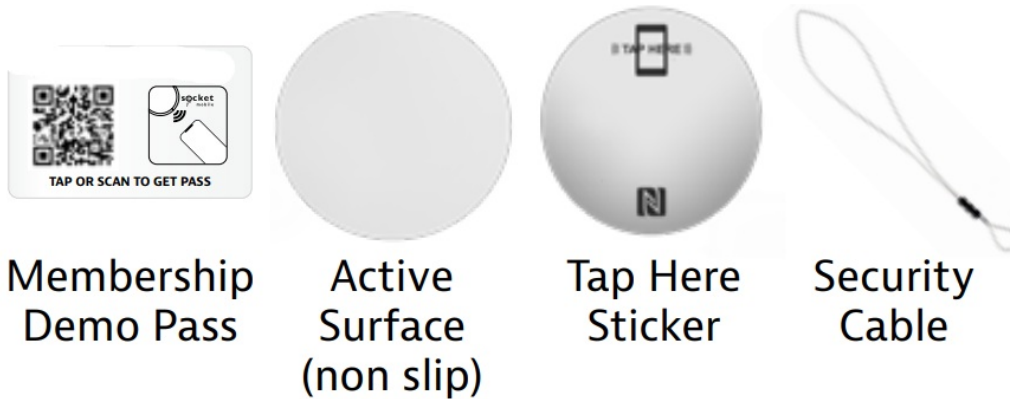


Charging  
Cable

## Bonus items:

Socket Mobile New Membership Pass

<https://socketmobile.com/new-member-passes>

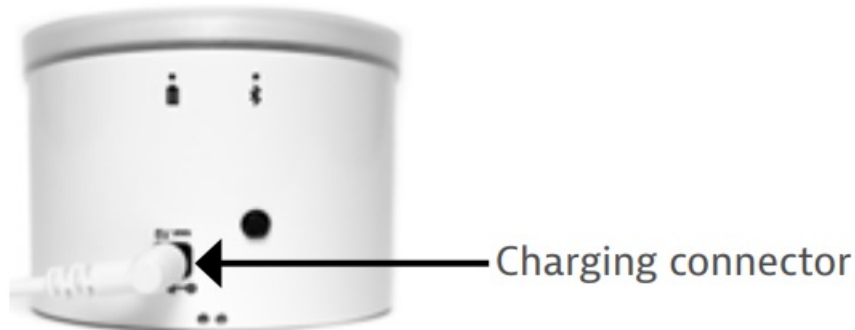


For the complete user guide: [socketmobile.com/warranty](https://socketmobile.com/warranty)

## S550 Set Up

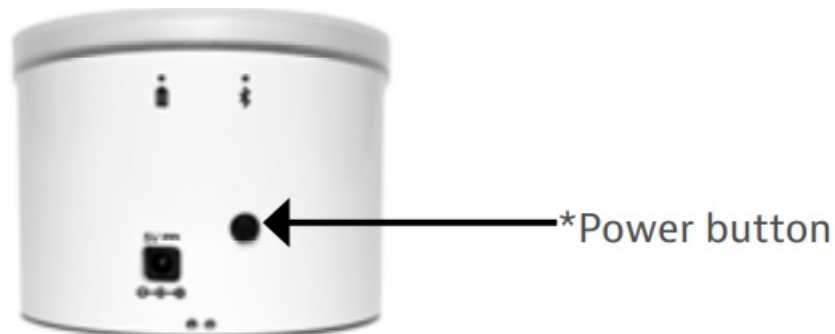
### 1. Charge Your S550

Connect to power using the charging cable and charge the battery.



### 2. Power On

Press the power button to turn on when S550 is battery operated.



\*Automatically turns on when connected to power.

### 3. Pair Your S550

The S550 will announce the mode "Reader"

**Step 1:** Open your app, wait until you hear "connected", then you are ready to go! (Your app is designed to

connect automatically to the S550) To register, download the Socket Mobile Companion app.



No app? Download Nice 2CU from the app store. This simple app will demonstrate a quick check-in/check-out



#### 4. Read NFC Data

Launch your app and place a membership card or mobile pass on top of the reader.



**Congratulations, your S550 is set up!**

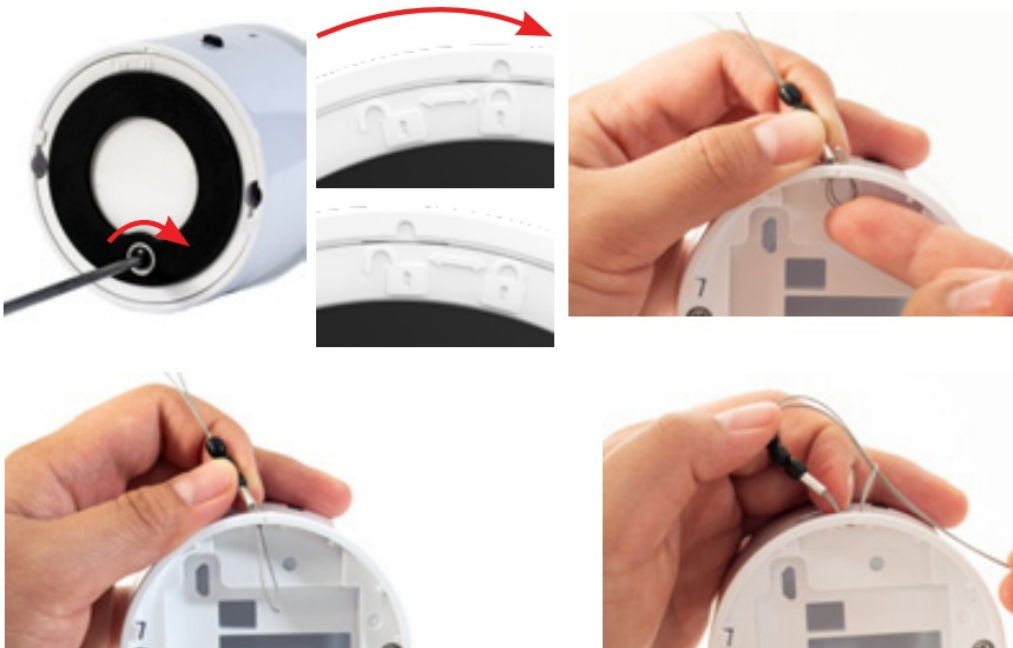
#### Optional Customization

##### Place the Active Surface and/or TAP HERE sticker

Step 1: Peel plastic off to place on top of the S550.



## Optional Customization



## Attach Security Cable

**Step 1:** Remove the battery door.

**Step 2:** Feed the string loop through the eyelet.

**Step 3:** Pull the gimbal through the string loop.

**Step 4:** Pull tight so the string loop is secure.

## Important Information

Safety, Compliance, and Warranty

Safety and Handling:

See Safety and Handling in the User Guide and Regulatory Compliance.

[www.socketmobile.com/regulatory-compliance](http://www.socketmobile.com/regulatory-compliance)

Regulatory:

Regulatory information, certification, and compliance mark specific to the Socket Mobile Barcode scanner is available in the User Guide or Regulatory Compliance at: [www.socketmobile.com/regulatory-compliance](http://www.socketmobile.com/regulatory-compliance).

IC and FCC Compliance Statement:

This device complies with Industry Canada license-exempt RSS standard(s). This device complies with part 15 of

the FCC rules. Operation is subject to the following two conditions: (1) this device may cause interference, and (2) this device must accept any interference, including interference that may cause undesired operation.

#### EU Compliance Statement:

Socket Mobile hereby declares that this wireless device is in compliance with the essential requirements and other relevant provisions of the R&TTE Directive.



#### Battery and Power Supply:

The scanner contains Battery Friendly® technology-rechargeable, replaceable batteries lasting over 8 hours.

Rechargeable batteries may present a risk of fire or chemical burn if mistreated. Do not charge or use the unit in a car or similar place where the inside temperature may be over 60 degrees C or 140 degrees F. For the full battery and battery charging warning statement and disposal information, go to User Guide or Regulatory Compliance:

[www.socketmobile.com/regulatory-compliance](http://www.socketmobile.com/regulatory-compliance)

#### Limited Warranty Summary:

Socket Mobile Incorporated (Socket) warrants this product against defects in material and workmanship, under normal use and service, for

one (1) year from the date of purchase. The product must be purchased new from a Socket Authorized Distributor or Reseller. Used products and products purchased through non-authorized channels are not eligible for this warranty support. Warranty benefits are in addition to rights provided under local consumer laws. You may be required to furnish proof of purchase details when making a claim under this warranty.

Consumables such as batteries, removable cables, cases, straps, and chargers: 90-day coverage only.

For more warranty information, visit:

<https://www.socketmobile.com/warranty>



6430-00406A

## Documents / Resources

 <p><b>socket</b> Get Started with your <b>SocketScan® S550</b> Thank you for purchasing the S550, the NFC reader/writer for your app! Check for app updates about scan and NFC capabilities. Scan up to 100 tags and write data to NFC tags. Works with supported applications and devices. Energy Efficient Highly portable and flexible Fast Scan Rechargeable battery LEDs</p>	<p><a href="#">SOCKET S550 NFC Reader/Writer</a> [pdf] User Guide</p> <p>S550, NFC reader writer</p>
---	--

## References

- [🔗 Mobile Data Capture Solutions - Socket Mobile](#)
- [🔗 Product Support Manuals & Image Downloads - Socket Mobile](#)
- [🔗 socketmobile.com/new-member-passes](#)