



Snailfly 2022 MDX Acura Running Board Installation Guide

[Home](#) » [Snailfly](#) » Snailfly 2022 MDX Acura Running Board Installation Guide 

SnailFly

INSTALLATION INSTRUCTION
FIT FOR ACURA MDX 2022+ AND HONDA PILOT 2023+

Contents

- [1 2022 MDX Acura Running Board](#)
- [2 Documents / Resources](#)
 - [2.1 References](#)
- [3 Related Posts](#)

2022 MDX Acura Running Board

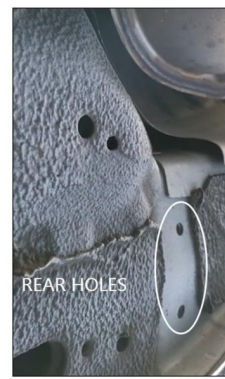
Search “2022 MDX Acura Running Board Installation” on Youtube for video.

<https://www.youtube.com/watch?v=XfrldtvQWWo>

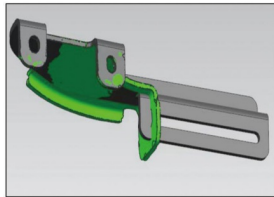
ACCESSORIES

1. 2 Side Steps
2. 6 Brackets
3. 12 Screws

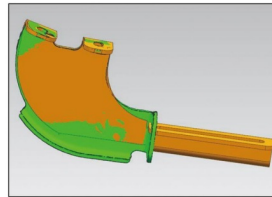
Find the mounting holes as the following pictures.



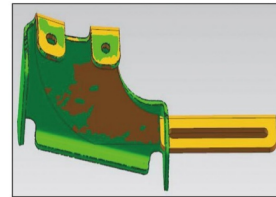
Fix the brackets to the mounting holes.



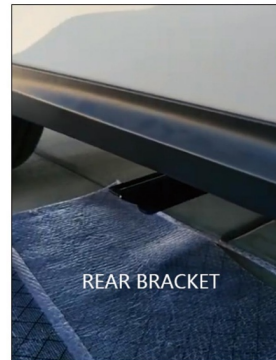
FRONT



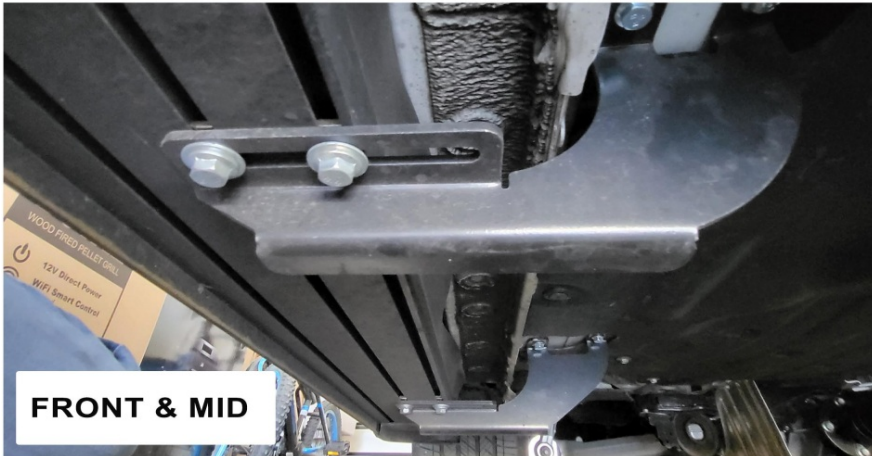
MID

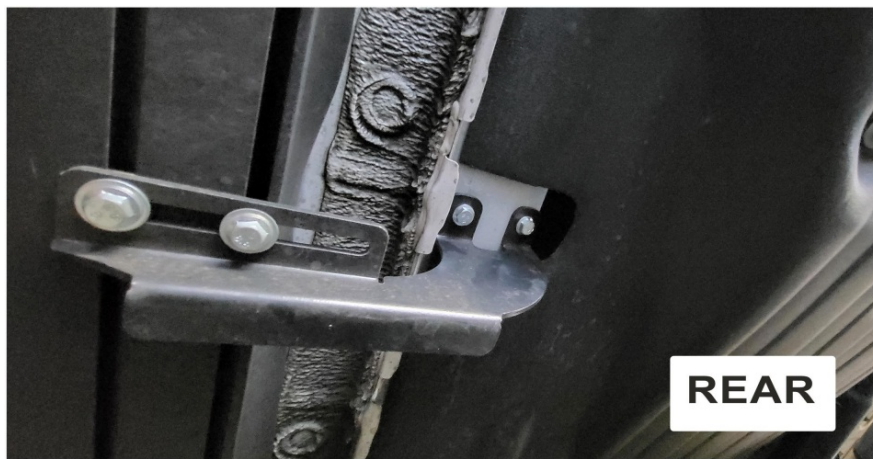


REAR



Fix the running board to the brackets.

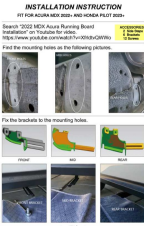




NOTE: If you don't want to remove the plate in the driver side, you can cut it to mount the bracket.
Please feel free to contact seller for any installation or product issue.
THANK YOU FOR YOUR SUPPORT.

SnailFly

Documents / Resources

	<p>Snailfly 2022 MDX Acura Running Board [pdf] Installation Guide 2022, 2022 MDX Acura Running Board, MDX Acura Running Board, Acura Running Board, Running Board, Board</p>
---	--

References

- [User Manual](#)

[Manuals+](#), [Privacy Policy](#)

This website is an independent publication and is neither affiliated with nor endorsed by any of the trademark owners. The "Bluetooth®" word mark and logos are registered trademarks owned by Bluetooth SIG, Inc. The "Wi-Fi®" word mark and logos are registered trademarks owned by the Wi-Fi Alliance. Any use of these marks on this website does not imply any affiliation with or endorsement.