



Snailax SL-234 Shiatsu Back Massager User Manual

[Home](#) » [SNAILAX](#) » Snailax SL-234 Shiatsu Back Massager User Manual 

Contents

- [1 Snailax SL-234 Shiatsu Back Massager](#)
- [2 Safety Instructions](#)
- [3 FEATURES](#)
- [4 TECHNICAL DATA](#)
- [5 Setup and Operation](#)
- [6 Controller Instructions](#)
- [7 Care and Cleaning Instructions](#)
- [8 TROUBLESHOOTING GUIDE](#)
- [9 Warranty](#)
- [10 FCC STATEMENT](#)
- [11 FREQUENTLY ASKED QUESTIONS](#)
- [12 References](#)
- [13 Related Posts](#)



Snailax SL-234 Shiatsu Back Massager



Safety Instructions

Please read the following instructions carefully before putting your massage device A into use to ensure trouble-free operation and optimum efficiency. Please retain these operating instructions for further use!

- The massage device conforms to recognized technical principles and the latest safety regulations.
- Do not wet, do not use pins, and never remove the cover.
- This item is NOT A TOY. Close supervision is necessary when this appliance is used by, on, or near children or disabled persons.
- This appliance should never be left unattended when plugged in.
- Never use any power sources other than the home adapter provided as original equipment with this unit.
- Any possible repairs may only be carried out by authorized expert staff. Improper use and unauthorized repairs are not permitted for safety reasons and lead to loss of warranty.
- Never touch the power plug with wet hands.
- Please avoid contact of the device with water, high temperatures, and direct sunlight.
- Do not use any damaged cables, plugs or loose sockets.
- Never operate under blankets where the air opening may be blocked.
- If plugs or cords are damaged, they must be replaced by the manufacturer, a service representative or qualified personnel.
- In case of malfunction, disconnect immediately from the mains.
- Do not use if you have skin disorders, open wounds, or swollen or inflamed areas.
- Misuse or incorrect use excludes any liability for damage.
- Do not use this device while driving.

- Do not use it while you sleep.
- In order to avoid excessively stimulating the muscles and nerves, the recommended massage time should not exceed 15 minutes at a time.
- The device is equipped with protection against overheating for safe use.
- Each massage – even a hand massage – must be refrained from during pregnancy or if one or more of the following complaints are present in the massage area: recent injuries, thrombotic diseases, all kinds of inflammations and swellings, and cancer. It is recommended to consult a doctor before having a massage for the treatment of ailments and illnesses.
- If you are dependent on electrical aids e.g. pacemakers, please be sure to consult your doctor for medical advice before taking a massage.
- The packaging material supplied should not be used as a toy.
- Do not use this product for medical treatment.

Failure to observe the above instructions may constitute misuse of the product and can cause serious injury or burns.

Instruction

Thank you for purchasing the Shiatsu Neck & Back massager with heat by Snailax Corporation. With normal care and proper treatment, it will provide years of reliable service. Please read all instructions carefully before using this product. Please retain this manual for future reference.

FEATURES

- Electrically height-adjustable Shiatsu neck massage
- **Selectable direction:** clockwise/anticlockwise
- Shiatsu back massage
- Adjustable Shiatsu intensity: High, Low
- Customize Spot Massage
- With an optional heat function
- Massage areas can be selected (upper, lower, full back)
- Seat vibration massage
- PU leather and breathable mesh

CONTENTS

- SL-234 Shiatsu Neck & Back Massager with Heat
- 12V home adapter

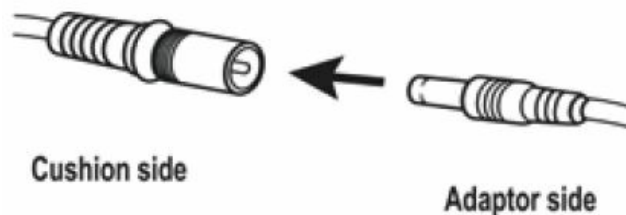


TECHNICAL DATA

- **Measurements:** 31×17.3 inches (Back) 16.1×13.8inches (Seat)
- **Weight:** 10.8lbs
- **Voltage:**
 - **Input:** AC 100-240V ~50/60Hz
 - **Output:** 12VDC 3.0A
- **Nominal Power:** max. 36Watt
- **Default Automatic runtime:** 15 minutes

Setup and Operation

1. Attach the massager to a chair with elastic straps or place it on other support.
2. Connect the adapter cable to the corresponding cable on the cushion.



3. Plug the home adapter into an electric outlet.
4. Turn on the device using the controller (instructions on page 5).
5. When finished place the controller in the pouch at the side of the cushion.
6. The detachable intensity control flap for the back lets you choose a softer or more intense massage.
7. A detachable cover for the neck lets you choose a softer or more intense massage.

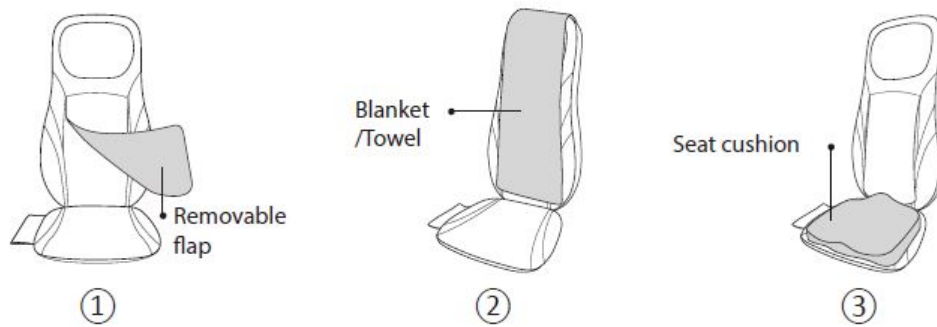
!Attention

If the Shiatsu is too strong,

1. Install the flap onto the cushion to get a softer massage.
2. Place a blanket or towel between you and the massager to achieve a far softer massage intensity if you still feel too strong shiatsu after installing the flap onto the cushion.

If the shiatsu can't reach neck, shoulder, your lower back area

3. If you want to massage your neck, shoulder or lower back, but the shiatsu nodes can not reach the area in need. You may adjust the height of your back when sitting, by placing a seat cushion or a pillow on the sitting part.

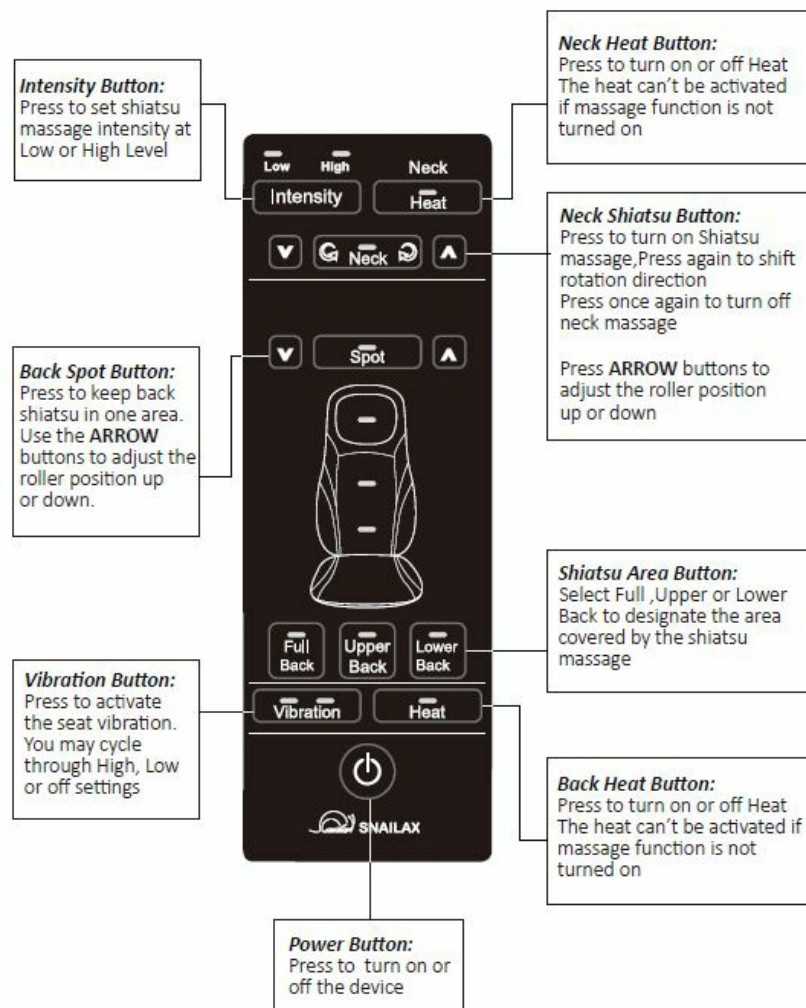


- Remove the adapter from the outside when use
- The device will automatically switch off after 15 minutes timer runs out.
- Do not set up or use the massager in a bathroom or similar wet/damp areas.

Attention

- You should allow your body some rest periods. To avoid straining your muscles too much, we recommend Not exceeding a continuous massage of 15 Minutes per time and Not exceeding 3 times use one day.

Controller Instructions



Care and Cleaning Instructions

1. Do not wash in the washing machine or immerse the product or the adapter in water.
2. Always switch off before cleaning and remove the adapter from the socket with clean, dry hands.
3. The massager should be wiped with a slightly moist cloth and dried thoroughly. Do not wipe the product with alcohol or harsh chemicals such as thinner or bleach.
4. The Cover for the neck is detachable and washable.
5. Do not overstretch the elastic back straps.
6. Keep away from heat, fire or exposure to direct sunlight.
7. Do not apply excessive pressure or impact onto massager/massage heads. Application of a direct force in excess of 110 lbs. may damage your massager and invalidate your warranty. Refrain from over usage of the device.
8. Store the massager in a cool, dry place out of reach of children.
9. Avoid contact with sharp edges or pointed objects that might cut or puncture the cover of the massager.

TROUBLESHOOTING GUIDE

Fault	Solutions
Massage heads rotating at reduced speed.	The load on the massage heads is excessive. Reduce the load and try again.
Massage heads only rotate in the upper or lower region.	The massage has been activated for the upper or lower back region. Press the 'Full Back' button for the massage to cover both regions.
Device switches off suddenly	The device may have been in use for 15 minutes. Auto-shut-off function activated. Continue using by pressing the 'power' button after resting the unit for 15 minutes.
	Over-heat protection function activated. The device is switched off for your safety. Please rest the device for 15- 30 minutes before restarting.
The device fail to start	Check if the device has been used for more than 15 minutes. If so, let the device rest for 15 minutes before continuing. The device may require a longer time to cool in warmer environments.
	Check if the adapter is plugged into the socket.
	Check if the adapter output is connected to the device power inlet wire.
Jerky motion of massage heads/ Vibrations from the device	Excessive pressure may have been applied to the device. Reduce the load and try again.
Infra-red lights are on but no motion from massage heads	The device may be jammed. Remove pressure/load from the device and press the 'Full Back' button to try again.

Warranty

If you have any issue about the product, please feel free to contact us by sending email to support@snailax.com. We will strive to provide the best service possible within 24 hours.

- **30 days unconditionally Return**

Snailax product can be returned to receive a full refund for any reason within 30 days. Please contact our customers service (support@snailax.com), our staff will contact you within 24 hours.

- **90 days refund/replace**

Snailax product can be returned / replaced within 90 days if the product break down in the period of proper

use.

- **12 months Warranty**

If the product break down within 12 months in the period of proper use, customers can enjoy the relevant warranty to get them replaced.

- **Attention!**

No warranty will be given to any force majeure and man-made causes to a defective product, such as improper care, personal tear down and willful damage, etc.

Extend Warranty for Free



- Enter the following URL or scan the QR code below to find Snailax Facebook page and like it, enter "Warranty" to messenger to extend your warranty from 1 year to 3 years. <https://www.facebook.com/snailax>
- Send message "Warranty" and email us support@snailax.com to extend your warranty from 1 year to 3 years.

Have question?

- **Tel:** 734-709-6982
- Monday-Friday 9:00AM-4:30PM
- **Email:** support@snailax.com

FCC STATEMENT

NOTE: This equipment has been tested and found to comply with the limits for a Class B digital device, pursuant to Part 15 of the FCC Rules. These limits are designed to provide reasonable protection against harmful interference in a residential installation. This equipment generates, uses and can radiate radio frequency energy and, if not installed and used in accordance with the instructions, may cause harmful interference to radio communications. However, there is no guarantee that interference will not occur in a particular installation. If this equipment does cause harmful interference to radio or television reception, which can be determined by turning the equipment off and on, the user is encouraged to try to correct the interference by one or more of the following measures:

- Reorient or relocate the receiving antenna.
- Increase the separation between the equipment and the receiver.
- Connect the equipment into an outlet on a circuit different from that to which the receiver is connected.
- Consult the dealer or an experienced radio / TV technician for help.

This device complies with Part 15 of the FCC Rules. Operation is subject to the following two conditions: (1) this device may not cause harmful interference, and (2) this device must accept any interference received, including interference that may cause undesired operation.

WARNING: Changes or modifications to this unit is not expressly approved by the party responsible for compliance could void the user's authority to operate the equipment.

FREQUENTLY ASKED QUESTIONS

What is the brand of the Shiatsu Back Massager?

The brand is Snailax.

Can you provide the specific model number for the Snailax Shiatsu Back Massager?

The model number is SL-234.

What is the intended use for the Snailax SL-234 Shiatsu Back Massager?

It is designed for use on the Whole Body.

What is the power source for the Snailax SL-234 Shiatsu Back Massager?

The power source is Corded Electric.

How much does the Snailax SL-234 Shiatsu Back Massager weigh?

The weight is 14 Pounds.

What are the product dimensions of the Snailax SL-234 Shiatsu Back Massager?

The product dimensions are 32.44 x 17.8 x 7.24 inches.

How many rotation shiatsu nodes does the Snailax SL-234 Shiatsu Back Massager have for neck and shoulder massages?

It has 4 rotation shiatsu nodes for neck and shoulder massages.

How many shiatsu nodes are dedicated to the full back in the Snailax SL-234 Shiatsu Back Massager?

There are 4 shiatsu nodes for the full back.

Are there multiple intensity levels for the shiatsu massage in the Snailax SL-234 Shiatsu Back Massager?

Yes, there are 2 levels of shiatsu intensity for options.

Does the Snailax SL-234 Shiatsu Back Massager feature a customizable spot massage function?

Yes, it has a customized spot massage function that allows you to focus the kneading massage nodes on one area for pin-point relaxation.

What areas of the back can be targeted with the spot massage function in the Snailax SL-234 Shiatsu Back Massager?

You can choose Full back, Upper back, or Lower back to massage the target area as desired.

Is there a heating therapy feature in the Snailax SL-234 Shiatsu Back Massager?

Yes, it delivers soothing warmth for the body to relax knots and tension muscles across the neck to the full back and lumbar.

How does the heating therapy contribute to the massage experience in the Snailax SL-234 Shiatsu Back Massager?

The heating therapy provides soothing warmth while simultaneously improving blood circulation, with an overheating protection system for safe use.

Can the Snailax SL-234 Shiatsu Back Massager be used on various types of chairs?

Yes, it can be used on a sofa, couch, recliner, office chair, or dining chair to create the ultimate comfort seat.

Does the Snailax SL-234 Shiatsu Back Massager come with an integrated strapping system for securing it in place on chairs?

Yes, it comes with an integrated strapping system to secure it in place on chairs.

DOWNLOAD THE PDF LINK: [Snailax SL-234 Shiatsu Back Massager User Manual](#)

REFERENCE: [Snailax SL-234 Shiatsu Back Massager User Manual-Device.Report](#)

References

- [User Manual](#)