



# Snailax SL-498 CORDLESS HANDHELD MASSAGER WITH HEAT User Manual

[Home](#) » [SNAILAX](#) » Snailax SL-498 CORDLESS HANDHELD MASSAGER WITH HEAT User Manual 

## Contents

- [1 Snailax SL-498 CORDLESS HANDHELD MASSAGER WITH HEAT](#)
- [2 Features](#)
- [3 TECHNICAL DATA](#)
- [4 Instructions for use](#)
- [5 Battery Charging](#)
- [6 Safety Instructions](#)
- [7 Care and Maintenance](#)
- [8 TROUBLESHOOTING](#)
- [9 Warranty](#)
- [10 Documents / Resources](#)
- [11 Related Posts](#)

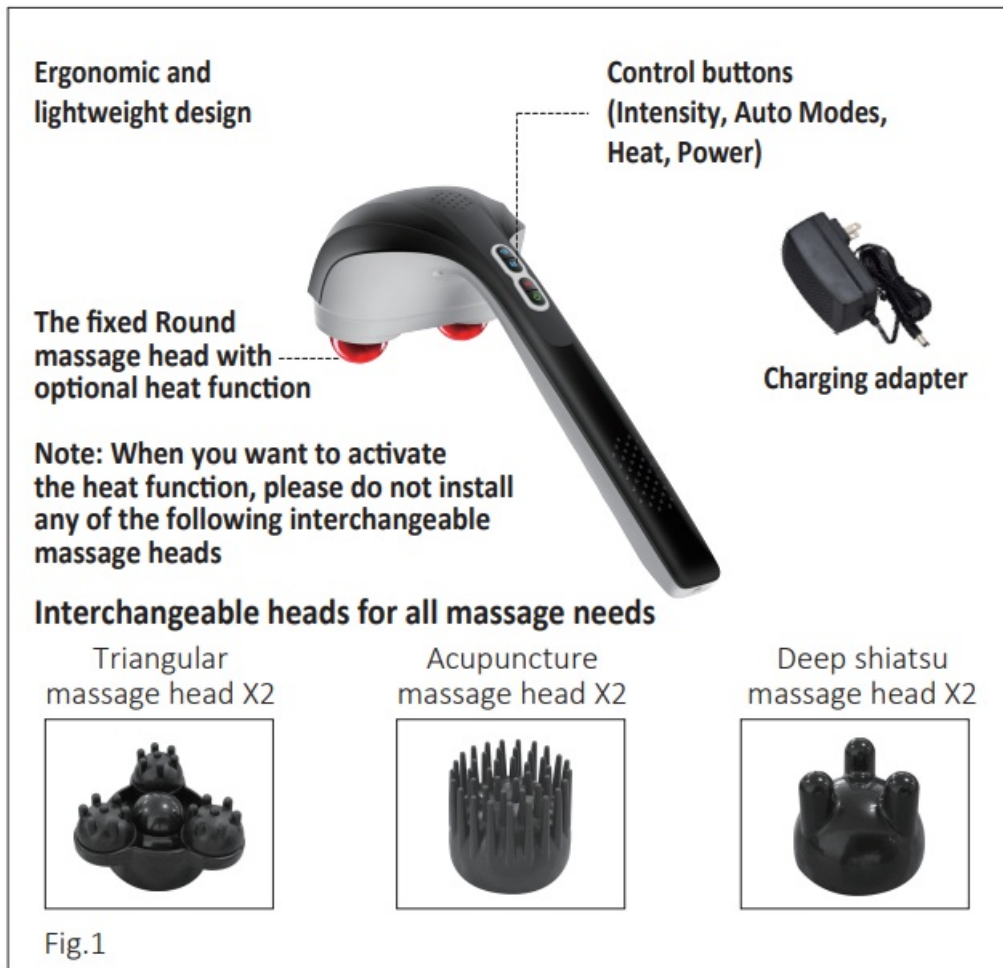


**Snailax SL-498 CORDLESS HANDHELD MASSAGER WITH HEAT**



## Features

Thank you for purchasing Snailax cordless handheld massager with heat. With normal care and proper treatment, it will provide years of reliable service.



## TECHNICAL DATA

- Model: SL-498
- Rated Voltage: DC 9.0V
- Rated Power: 13 Watt
- Battery Max.runtme: 80 minutes

## Instructions for use

1. Turn off the massager before replacing another massage head.
2. Your massager comes equipped with 3 attachments (Figure 1). Attach the different heads by twisting clockwise (Figure 2), detach the installed massage head by twisting anti-clockwise and pulling out (Figure 3). Always turn off the device while replacing the heads

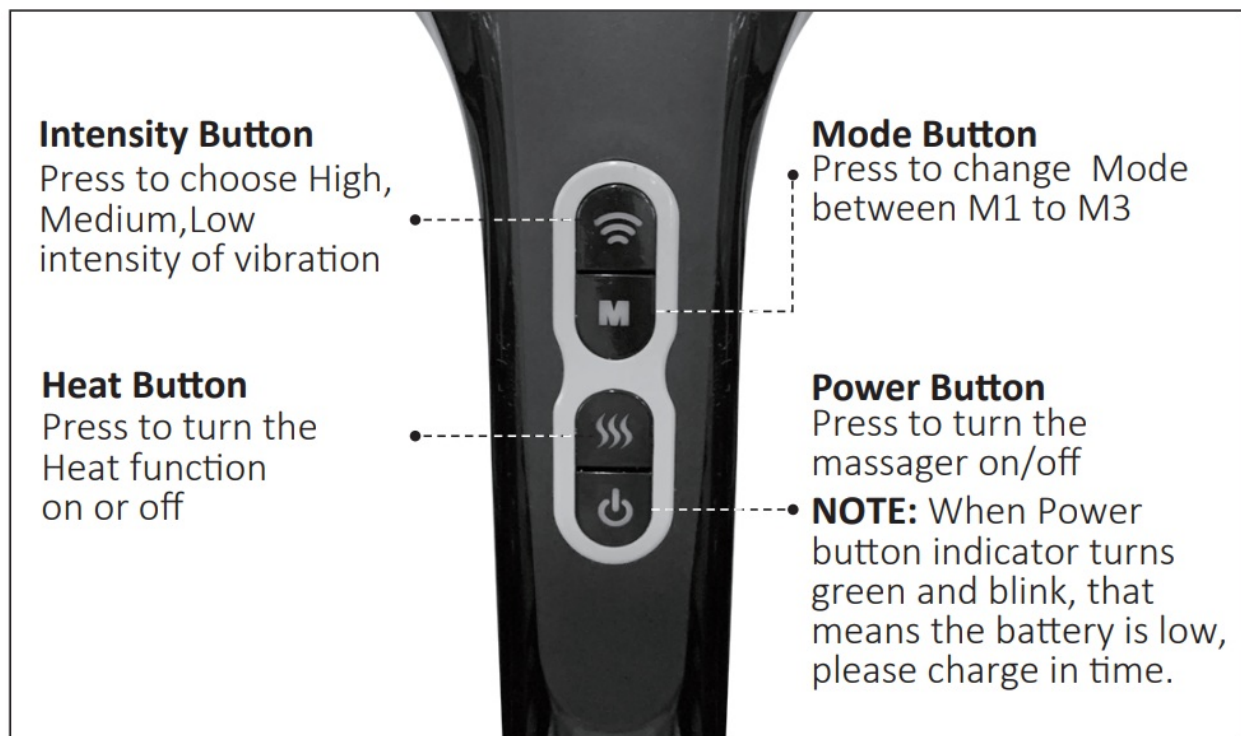


Fig.2



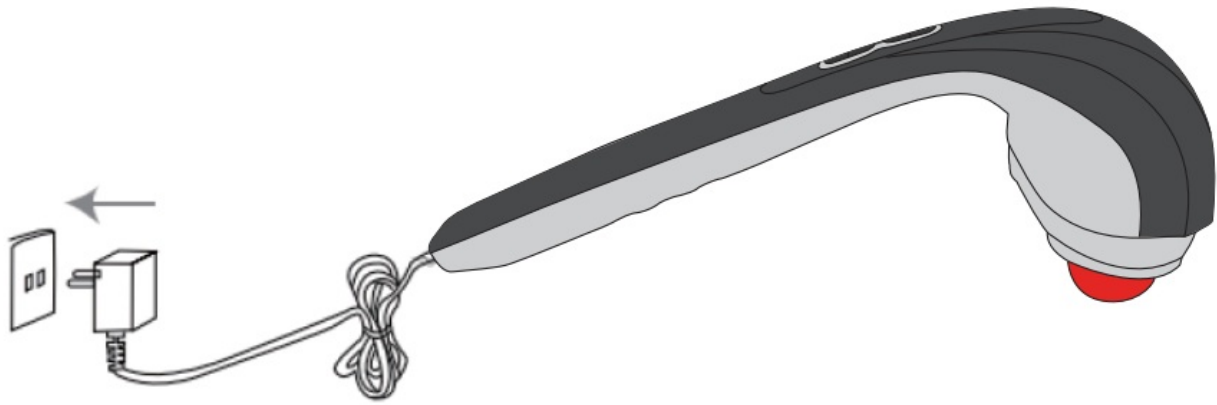
Fig.3

3. Turn on the massager by operating the control buttons (instructions as below)
4. Apply the massager head lightly to the area you wish to treat. Move the unit slowly, holding it over the targeted area. Treat the area for a short period of time and move to another area. NEVER treat the same area for longer than 3 minutes.
5. To turn the unit off by pressing the power button. For your safety the device will automatically turn off after 15 minutes of continuous use.



## Battery Charging

1. Connect the charging adapter cable to the corresponding port on the massager



2. Plug the charging adapter into an outlet.
3. Normally it takes 2.5-3 hours to fully charge the battery.
4. Indicator light on POWER Button :
  - When POWER button indicator turns green and blink, that means the battery is low, please charge in time.
  - While charging, the POWER button indicator light will turn 'RED' and blink.
  - When fully charged, the POWER button indicator will keep 'RED' and not blink
  - If the battery is full, the massager can work continuously for around 80 minutes.
5. It is safe to use the massager while charging.

**NOTE:** Please only use provided charging adapter.

## **Safety Instructions**

READ ALL INSTRUCTIONS BEFORE USE. SAVE THESE INSTRUCTIONS FOR FUTURE REFERENCE.

### **IMPORTANT SAFEGUARDS:**

WHEN USING ELECTRICAL PRODUCTS, ESPECIALLY WHEN CHILDREN ARE PRESENT, BASIC SAFETY PRECAUTIONS SHOULD ALWAYS BE FOLLOWED,

### **INCLUDING THE FOLLOWING:**

- ALWAYS unplug the appliance from the electrical outlet immediately after using and before cleaning. To disconnect, turn all controls to the 'OFF' position, then remove plug from outlet.
- NEVER leave an appliance unaattended when plugged in. Unplug from the mains outlet and turn off the massager when not in use and before putting on or taking off parts or attachments.
- DO NOT reach for an appliance that has fallen in water or other liquids. Switch off at the mains and unplug it immediately. Keep dry – DO NOT operate in wet or moist conditions.
- NEVER insert pins or other metallic fasteners into the appliance.
- Use this appliance for the intended use as described in this booklet. DO NOT use attachments not recommended by SNAILAX.
- NEVER operate the appliance if it has a damaged cord or plug, if it is not working properly, if it has been dropped or damaged, or dropped into water. Return it to the SNAILAX Service Centre for examination and repair.

- Keep cord away from heated surfaces.
- Excessive use could lead to the product's excessive heating and shorter life. Should this occur, discontinue use and allow the unit to cool before operating.
- NEVER drop or insert any object into any opening.
- DO NOT operate where aerosol (spray) products are being used or where oxygen is being administered.
- DO NOT operate under a blanket or pillow. Excessive heating can occur and cause fire, electrocution or injury to persons.
- DO NOT carry this appliance by the cord or use cord as a handle.
- DO NOT attempt to repair the appliance. All servicing of this appliance must be performed by authorised Snailax service personnel only.
- Never block the air openings of the appliance or place it on a soft surface, such as a bed or couch. Keep air openings free of lint, hair etc.
- Do not place or store appliance where it can fall or be pulled into a bath or sink. Do not place in or drop into water or other liquid.
- Failure to follow the above may result in the risk of fire or injury

### **Safety Cautions:**

PLEASE READ THIS SECTION CAREFULLY BEFORE USING THE APPLIANCE.

- If you have any concerns regarding your health, consult a doctor before using this appliance.
- Individuals with pacemakers and pregnant women should consult a doctor before using this appliance. Not recommended for use by Diabetics
- DO NOT use on an infant, invalid or on a sleeping or unconscious person.
- DO NOT use on insensitive skin or on a person with poor blood circulation.
- This appliance should NEVER be used by any individual suffering from any physical ailment that would limit the user's capacity to operate the controls or who has sensory deficiencies in the lower half of their body.
- NEVER use directly on swollen or inflamed areas or skin eruptions.
- If you feel any discomfort whilst using this appliance, discontinue use and consult your doctor.
- This is a non-professional appliance, designed for personal use and intended to provide a soothing massage to worn muscles. DO NOT use as a substitute for medical attention.
- Do not use for longer than the recommended time.
- If the product feels excessively hot, switch off at mains immediately.
- You may soften massage force by placing a towel between yourself and the unit.
- Please ensure that all hair, clothing and jewellery are kept clear of the massage mechanism or any other moving parts of the product at all times.
- Do not use this product for medical treatment.

### **Care and Maintenance**

- For maintenance and repair of this product, please contact our service center.
- Please turn off the device immediately when not in use.
- Place this product in a dry, dust-free place.
- Do not store this product near high temperature or open flame.

- Do not expose it to direct sunlight, it will cause discoloration and damage.
- Avoid the use of benzene, thinners, or any other corrosive solvents, or liquid on this product and its accessories.
- Always unplug from electrical outlet and turn off the device before cleaning this product and its accessories,
- Wipe the product with a soft, dry cloth to clean the machine.

## TROUBLESHOOTING

### FAULT

### SOLUTION

- THE DEVICE FAIL TO START: CHECK IF THE BATTERY IS OUT OF POWER  
CHECK IF THE MODE OR HEAT BUTTON IS TURNED ON.
- THE VIBRATION BECOMES WEAK: THE BATTERY IS LOW, PLEASE CHARGE IN TIME
- THE DEVICE SWITCHES OFF SUDDENLY: BATTERY POWER RUN OUT, PLEASE RECHARGE IN TIME

## Warranty

### 30-Day Money Back Guarantee for any reason

Snailax product can be returned to receive a full refund for any reason within 30days. Please contact our customers service ([support@snailax.com](mailto:support@snailax.com)), our staff will contact you within 48 hours.

### 90-Day Money Back Guarantee for quality related issue

Snailax product can be returned / replaced within 90 days if the product break down in the period of proper use.

### 24-Month Warranty for quality related issue

If the product break down within 24 months in the period of proper use, customers can enjoy the relevant warranty to get them replaced.

### Attention!

No warranty will be given to any force majeure and man-made causes to a defective product, such as improper care, personal tear down and willful damage,etc.

### Gratitude

We are quite thankful for your trust in our Snailax brand. Snailax will continuously bring you a better user experience.

To learn more information about Snailax's healthy products, please visit: [www.snailax.com](http://www.snailax.com)  
[www.facebook.com/Snailax](https://www.facebook.com/Snailax)

## WARRANTY REGISTRATION !

1. Send message "WARRANTY" to [support@snailax.com](mailto:support@snailax.com) to activate the 2-year FREE warranty OR
2. Find Snailax Facebook page and like it: [www.facebook.com/Snailax](https://www.facebook.com/Snailax)  
Enter "WARRANTY" to messenger to activate 2-years FREE warranty

2750 Carpenter Road, Suite 1 B, Ann Arbor, 48108 Tel.+1.734.709.6982 [support@snailax.com](mailto:support@snailax.com)  
[www.snailax.com](http://www.snailax.com)

## Documents / Resources

Use 5. core manual  
CORDLESS HANDHELD  
MASSAGER WITH HEAT  
SL-498



SNAILAX®

**[Snailax SL-498 CORDLESS HANDHELD MASSAGER WITH HEAT](#)** [pdf] User Manual  
CORDLESS HANDHELD MASSAGER, HANDHELD MASSAGER WITH HEAT, SL-498, HAND  
HELD MASSAGER