



# Smof 30pin-4871 Bluetooth Adapter for Sounddock Instruction manual

[Home](#) » [Smof](#) » Smof 30pin-4871 Bluetooth Adapter for Sounddock Instruction manual 

## Contents

- 1 Smof 30pin-4871 Bluetooth Adapter for Sounddock
- 2 What's in the Box
- 3 Product Specification
- 4 connection type
- 5 How It Works
- 6 FEATURES
- 7 PRODUCT USAGE
- 8 FREQUENTLY ASKED QUESTIONS
- 9 VIDEO – PRODUCT OVERVIEW



**Smof 30pin-4871 Bluetooth Adapter for Sounddock**



## What's in the Box

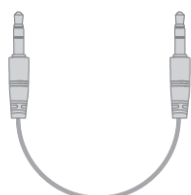
Products \* 1



Instruction manual \* 1



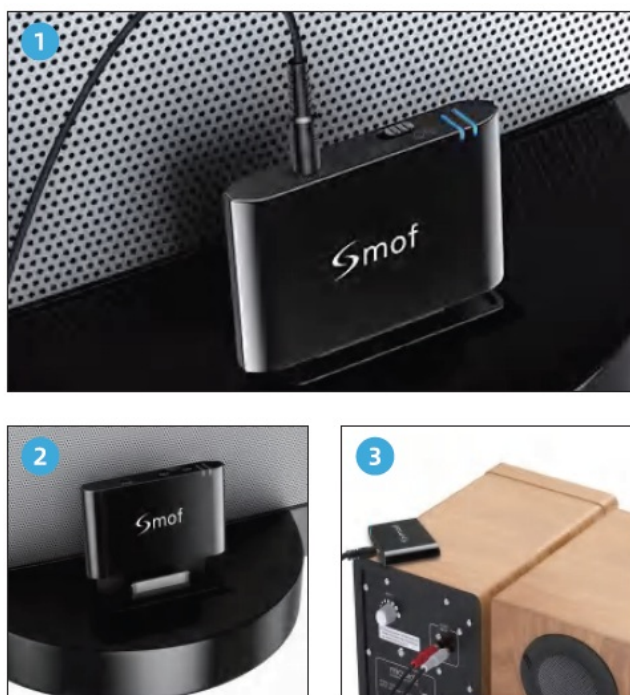
3.5mm audio cable \* 1



## Product Specification

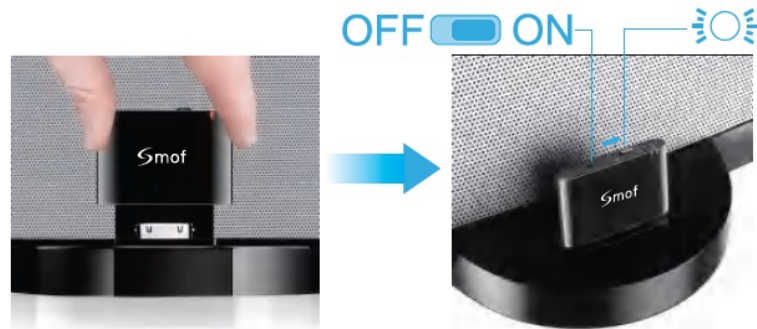
Specifications Bluetooth Version:	Bluetooth V4.1
Frequency Range:	2.4GHz-2.480GHZ
Uperat1on:	II.Ao 2
Bluetooth Distance :	upto33feet (70M)
Bluetooth Protocol:	HFPI6 HSPI.I A2D.P.2 AI/RCPI.5 SPPI.O
External supply voltage:	DC+S~DC+16V(30 pin Apple speaker power)
External Powe- Stipply Oper:3ting Curren::	36mA

## connection type

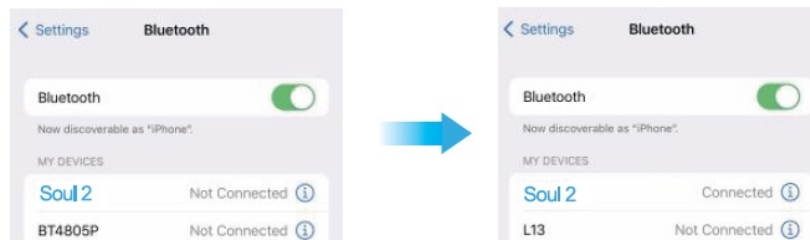


## How It Works

- Plug in the 30-pin base, turn it on, and the blue light flashes. The speaker will turn to “pod mode automatically. (If the speakers could not turn themselves automatically, you can change them to “(pod mode” by the mode key)



- Click Settings on your phone, open Bluetooth to search for “Soul 2” and click Pairing.



### Oh~No sound? Try PlanB

- Connect 3.5mm audio cable, plug into AUX or AUDIO IN



- audio source set to AUX or AUDIO IN (this step is very important, did not do the right sound).



- Play the music again on the sound



- No solution? Don't worry, ask our after-sales support.

### Caution

Energy-saving design, if the product is not used within 10 minutes, it will automatically switch off

### Support

If you encounter any problems during the use of the product, please contact our professional after-sales support and we will get back to you within 1 working day.

[support@smofdirect.com](mailto:support@smofdirect.com)



Thank you for choosing us. [www.Smofdirect.com](http://www.Smofdirect.com)



## FEATURES

- **Activate the Bose SoundDock on your computer**

A Smof 30-pin to Bluetooth adapter may transform your traditional wired music docking station into a wireless player, breathing new life into your favorite old Bose Dock and enabling you to enjoy high-quality wireless music whenever and wherever you like. (NOT FOR AUTOMOBILE)

- **Simple in Operation**

Plug & play, simple to use, compatible with the vast majority of iPhone models, Android phones, and any other

Bluetooth-enabled devices; in addition, our Bluetooth adapter supports two devices being paired at once, allowing you to pair bluetooth with both an iPhone and an iPad at the same time.

- **Portable Design**

Tiny size, better sturdy You can take this Bluetooth stereo receiver with you everywhere you go because it has a 30-pin Plug. In the open air, the range of a Bluetooth device is 33 feet.

- **“Plan B” in Case There Is No Sound**

If, after pairing successfully, the speaker still does not produce any sound, you will need to switch the device to AUX Audio Mode, connect the speaker to the AUX cable that was included in our delivery, and then pair the speaker with your phone once more.

- **COMPATIBILITY**

Please consult the following list of compatible and incompatible player models before making a purchase. It is NOT RECOMMENDED to use this Bluetooth adapter with 30 pins in a vehicle. Each Bluetooth adapter comes with a warranty that is good for a year, and if you have any issues, don't hesitate to get in touch with the customer care staff for our brand.

**Note:**

Products that are equipped with electrical plugs are suitable for use in the United States. Because power outlets and voltage levels vary from country to country, it is possible that you will need an adaptor or converter in order to use this device in your destination. Before making a purchase, you should make sure everything is compatible.

## **PRODUCT USAGE**

**The following is a list of the product applications for the Smof 30pin-4871 Bluetooth Adapter for Sounddock:**

- **Audio streaming over wireless networks:**

The SoundDock speaker system can receive wireless transmissions of music and other audio content from Bluetooth-enabled devices thanks to the Bluetooth adapter. This is the adapter's principal function.

- **Compatibility with Previous Generations of SoundDock:**

Users are able to update their speaker systems with Bluetooth capability by using an adapter that is designed to operate exclusively with older SoundDock versions that feature the 30-pin Apple connector.

- **Solution for Transportable Audio Devices:**

Users who wish to enjoy wireless audio while they are on the move will find the Bluetooth adapter to be a practical alternative because of its portability and its ease of carrying because of its compact size.

- **Calling with No Hands Necessary:**

When linked to a smartphone, certain Bluetooth adapters may come equipped with a built-in microphone that enables users to answer incoming phone calls without physically picking up the device.

- **The ability to pair multiple devices:**

It is common for the adapter to be able to pair with numerous Bluetooth devices, which enables multiple users to connect and play their music without any interruptions.

- **Simple Config:**

Plugging the adapter into the 30-pin socket on the SoundDock and then pairing it with the Bluetooth device is typically all that is required for the straightforward and uncomplicated setup process.

- **Powered by a battery or a USB port:**

The Bluetooth adapter can get its power from either an internal battery that can be recharged or from a USB

connection that can be made to either the SoundDock or another source of power.

- **Adjusting the Music:**

Users can immediately manage the playback, level, and track selection of their audio content from their Bluetooth devices, which they can pair together.

- **Compatible with Music Streaming Applications:**

Users will be able to stream material from services such as Spotify, Apple Music, and YouTube thanks to the Bluetooth adapter's compatibility with widely used music streaming apps.

- **Home Entertainment:**

The adapter expands the capabilities of SoundDock, transforming it into a flexible home entertainment system that is able to play audio from a variety of different sources.

- **Compatibility with a Variety of Electronic Gadgets:**

The adapter is compatible with a wide variety of Bluetooth-enabled devices, such as mobile phones and tablets, laptop computers, and other Bluetooth audio sources.

- **The Quality of the Audio:**

The adapter normally delivers audio transmission of high quality, ensuring that the sound output keeps its clarity and fidelity.

- **Convenience Without the Need for Cable:**

Users are free to roam around with their Bluetooth devices while listening to music thanks to the Bluetooth adaptor, which does away with the requirement for physical cords and frees them up to do so.

- **Compatibility with Apple and Google's Mobile Operating Systems:**

The adapter is compatible with devices running the iOS and Android operating systems, making it useful for users who have a variety of mobile devices such as smartphones and tablets.

- **Improving the Performance of Older Devices:**

The Bluetooth adapter gives older SoundDock devices that may not have Bluetooth capability a new lease of life, hence extending the utility and relevance of these SoundDock models.

- **Audio Transmission Without Wires at Parties and Other Gatherings:**

Users are able to play music wirelessly during get-togethers and parties thanks to the Bluetooth adaptor, which also makes it simpler for users to control the playlist and exchange music with one another.

- **Travel Companion:**

Because of its portable nature, the adapter is an excellent travel companion. It enables customers to continue listening to their preferred music on the SoundDock even while they are away from home.

- **Upgrading SoundDock Systems:**

Existing SoundDock systems can be upgraded at a low cost with the help of the Bluetooth adapter, which eliminates the need to make an investment in a new speaker that is Bluetooth-enabled.

- **Compatibility with Every Device:**

Because it is compatible with a wide variety of SoundDock models, the adapter is a flexible attachment that may be utilized by a wide variety of end users.

- **Improving the Experience of the User:**

A better user experience may be had with older SoundDock systems by adding the Smof 30pin-4871 Bluetooth Adapter for Sounddock. This adapter makes the systems more user-friendly and ensures that they are compatible with newer audio devices.

## FREQUENTLY ASKED QUESTIONS

What is the Smof 30pin-4871 Bluetooth Adapter for Sounddock used for?

The Smof 30pin-4871 Bluetooth Adapter is used to enable Bluetooth connectivity for older SoundDock speaker systems with a 30-pin Apple connector.

Does the Smof 30pin-4871 Bluetooth Adapter work with all SoundDock models?

The adapter is designed to work with SoundDock models that have a 30-pin Apple connector, ensuring compatibility with a wide range of older SoundDock systems.

How does the Smof 30pin-4871 Bluetooth Adapter connect to the SoundDock?

The adapter plugs directly into the 30-pin connector of the SoundDock, allowing for easy and straightforward installation.

Can I use the Smof 30pin-4871 Bluetooth Adapter with other non-SoundDock audio systems?

The adapter is specifically designed for SoundDock systems with a 30-pin connector and may not be compatible with other audio systems.

What devices can I connect to the Smof 30pin-4871 Bluetooth Adapter via Bluetooth?

The adapter can be paired with various Bluetooth-enabled devices, such as smartphones, tablets, laptops, and other Bluetooth audio sources.

Is the Smof 30pin-4871 Bluetooth Adapter battery-powered or USB-powered?

The adapter may come with an internal rechargeable battery, or it can be powered via a USB connection to the SoundDock or another power source.

How is the audio quality when using the Smof 30pin-4871 Bluetooth Adapter?

The adapter typically provides high-quality audio transmission, ensuring clear and reliable sound output.

Can I control the music playback and volume from my Bluetooth device?

Yes, users can control the music playback, volume, and track selection directly from their paired Bluetooth devices.

Does the Smof 30pin-4871 Bluetooth Adapter support Bluetooth version 5.0?

The adapter may support different Bluetooth versions, with some models offering Bluetooth 4.1 or higher.



Can the Smof 30pin-4871 Bluetooth Adapter be used with both iOS and Android devices?

Yes, the adapter is generally compatible with both iOS and Android devices, making it versatile for users with different smartphones and tablets.

Is the Smof 30pin-4871 Bluetooth Adapter compatible with music streaming apps like Spotify and Apple Music?

Yes, the adapter is compatible with popular music streaming apps, allowing users to stream content from various platforms.

Can I use the Smof 30pin-4871 Bluetooth Adapter for hands-free calling?

Some models of the adapter may come with a built-in microphone, allowing users to answer phone calls wirelessly when connected to a smartphone.

Is the Smof 30pin-4871 Bluetooth Adapter easy to set up and use?

Yes, the adapter is generally easy to set up and use, with straightforward installation instructions provided in the user manual.

Can I use the Smof 30pin-4871 Bluetooth Adapter for outdoor activities and travel?

Yes, the portable design of the adapter makes it suitable for outdoor activities and travel, allowing users to enjoy wireless audio on the go.

Can the Smof 30pin-4871 Bluetooth Adapter be used with other Bluetooth audio receivers or speakers?

The adapter is specifically designed for SoundDock systems with a 30-pin connector and may not be compatible with other Bluetooth audio devices.

## VIDEO – PRODUCT OVERVIEW



[Download the PDF link Smof 30pin-4871 Bluetooth Adapter for Sounddock Instruction manual Adapter-for-Sounddock-Instruction-manual.mp4](#)