

Smart**Wise** 

**T1R1W 1
Button
SmartWise
Touch Switch**



T1R1W 1 Button SmartWise Touch Switch Instruction Manual

[Home](#) » [SmartWise](#) » T1R1W 1 Button SmartWise Touch Switch Instruction Manual 

Contents

- 1 T1R1W 1 Button SmartWise Touch Switch
- 2 Safety Instructions
- 3 General Wiring Instructions
- 4 Installation Steps
- 5 Disassemble Precautions
- 6 Wiring Diagram
- 7 Wiring Connection
- 8 FAQ
- 9 Documents / Resources
 - 9.1 References
- 10 Related Posts

Smart**Wise** 

T1R1W 1 Button SmartWise Touch Switch



Safety Instructions

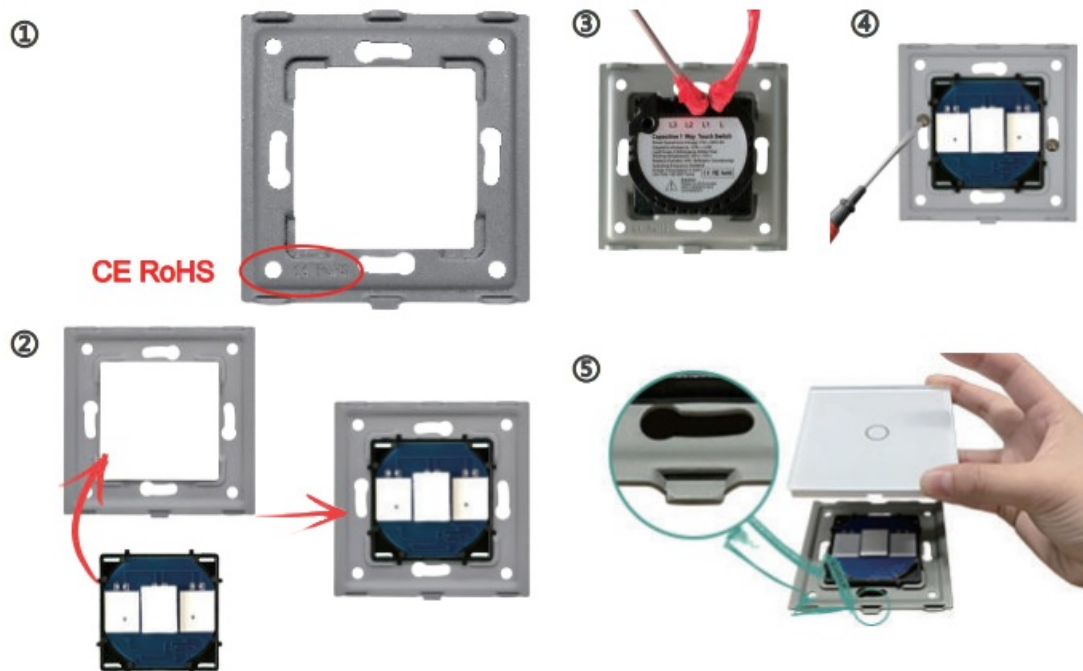
- Keep The Power Off During Installation (Before You Cover The Panel)
- Check The Terminal Connections Before Wiring
- Connect The Device In Accordance With The Relevant Diagrams
- Ensure That No Bare Wires From The Terminals In Case Of Electric Shock

General Wiring Instructions

1. L Terminal Connect To Live Wire
2. N Terminal Connect To Neutral Wire
3. L1 L2 L3 Terminals Connect To Light Wire
4. 2-Way Terminal Connect To Another 2 Way Terminal

Warning: Don't Switch On The Appliance Before Installation Is Finished Completely

Installation Steps



1. Open The Box, Take Out The Parts, Distinguish The Front And Back Of The Metal Plate
(Note: The Side With CE And RoHS Is The Back Side)
2. Assemble Insert Parts And Metal Plate
(Note: Push The Insert Parts Into Metal Plate From The Front Side)
3. Follow The Wiring Instructions To Connect The Wires
4. Screw To Fix The Switch To The Wall Box
5. Push The Glass Panel Onto The Device And Finish The Installation

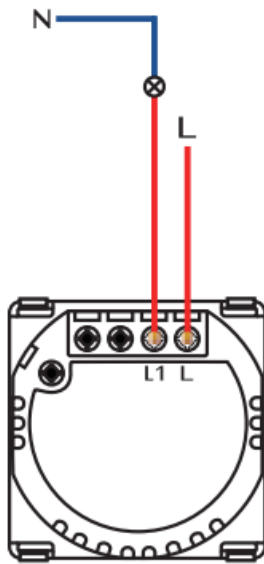
Disassemble Precautions



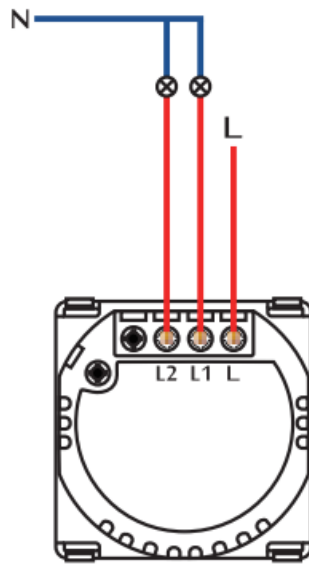
Separate The Glass Panel And Metal Plate From The Groove With A Screwdriver (Just In Case The Glass Panel Is Scratched)

Wiring Diagram

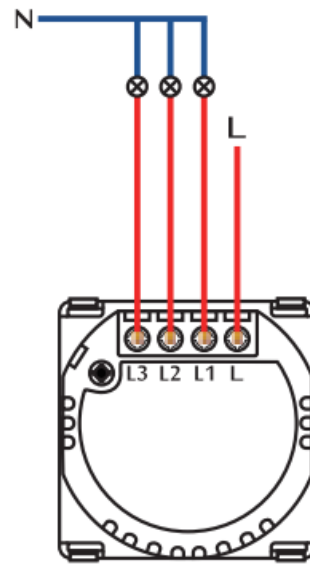
1-Way Light Switch 1-Way Light Switch Is Used To Control A Light Only From 1 Position



1Gang 1Way



2Gang 1Way

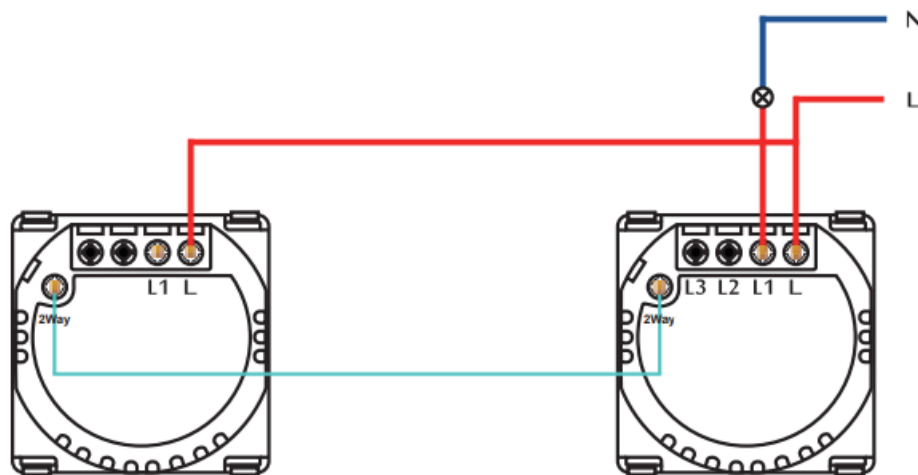


3Gang 1Way

2-Way Light Switch

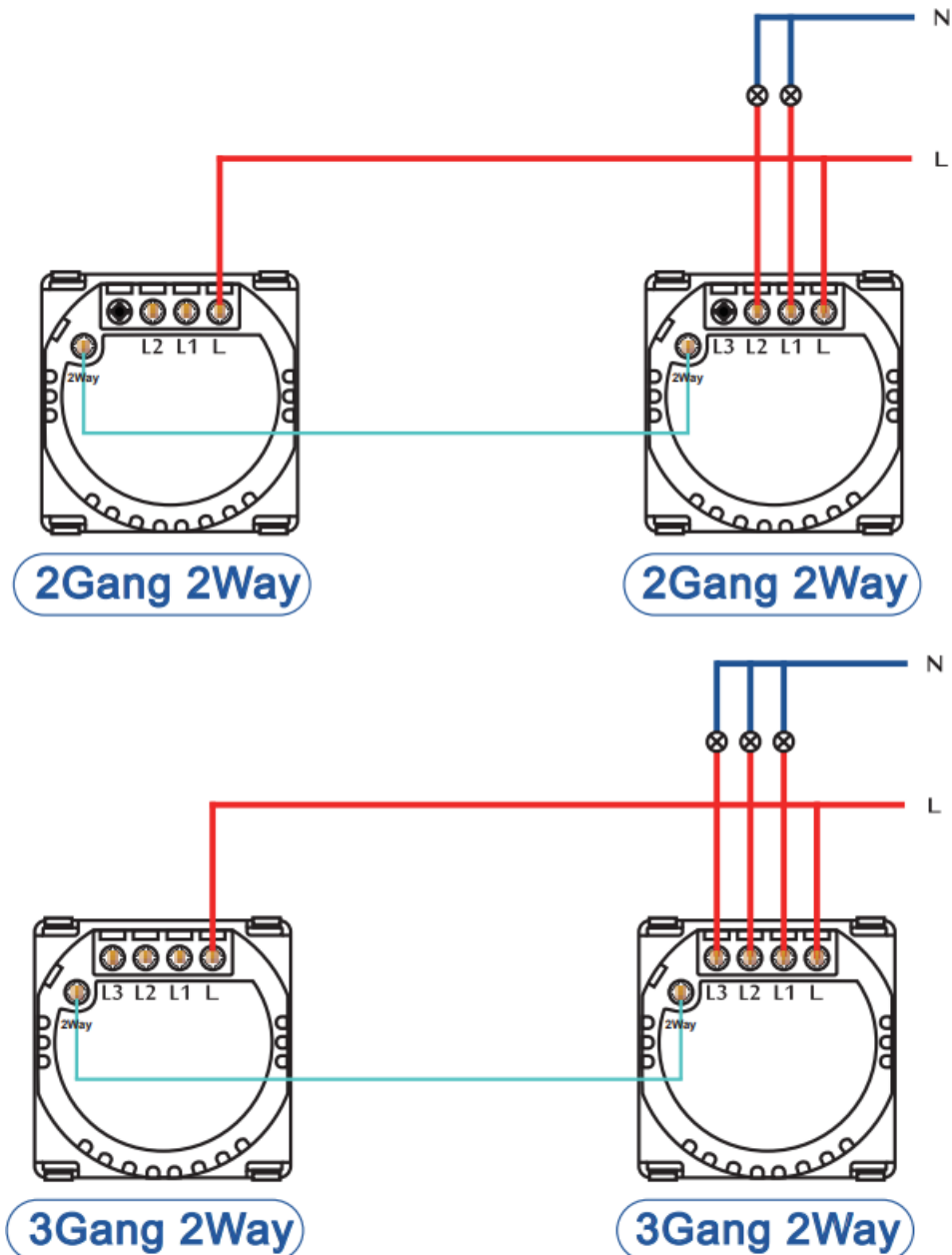
2-Way Light Switch Is Used To Control A Light From 2 Different Position Like Upstairs And Downstairs

Note: BSEED Brand 2 Way Light Switch Can Only Work Together With The Same Brand 2 Way Light Switch. It Can Not Match With Other Brand's Switch



1Gang 2Way

1Gang 2Way

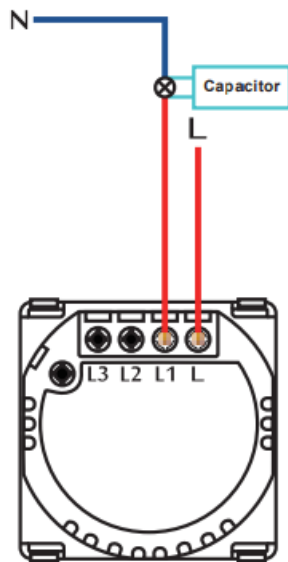


Wiring Connection

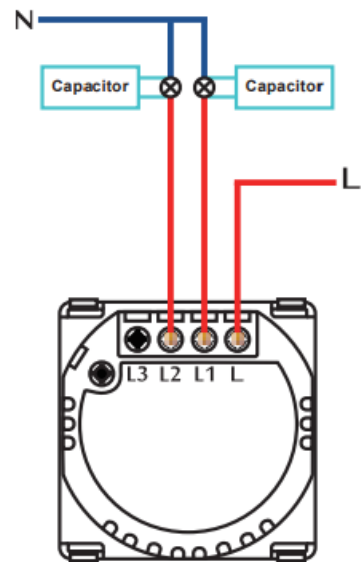
1-Way Dimmer Switch

1 Way Dimmer Switch Is Used To Adjust The Brightness Of The Lights Only From 1 Position

Note: The Capacitor Should Be Installed To The Light Bulbs



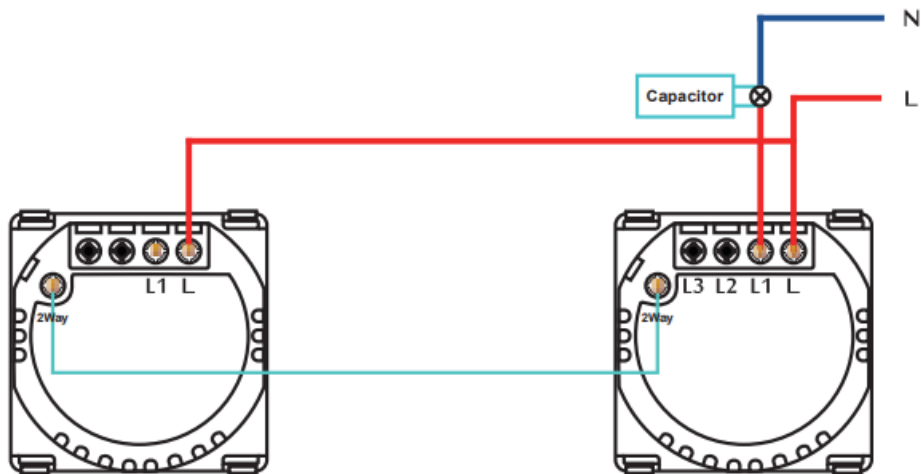
1Gang 1Way



2Gang 1Way

2-Way Dimmer Switch

2 Way Dimmer Switch Is Used To Adjust The Brightness Of The Lights From 2 Different Position Like Upstairs And Downstairs



1Gang 2Way

1Gang 2Way

Dimmer Switch Default Operation:



① On/Off



② Brighten



③ Dimming



The Switch Is Activated By Pressing And Holding On The Front Panel To Adjust The

Lighting Intensity Of The Lights Bulbs

1. Click The Middle Button To Turn On/Off
2. Long Press The Middle Button To Brighten Your Light Bulbs
3. Release And Long Press Again The Middle Button To Dim The Light Bulbs

Tip: To Avoid Any Damage May Leads To The Glass Panel and The Plastic Border, Carefully Lift Up The Screwdriver during the removal process

The Dimmer Switch Has A Memory function keeps The Level Of Dim. When You Turn 'OFF' Then 'ON' It Remembers The Adjustment Intensity By Decreasing And Increasing The Lights Bulbs

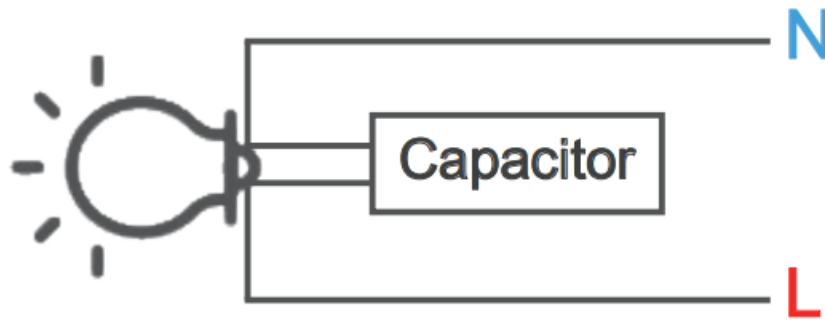
Compatible Bulbs(Min. 5W):

1. Incandescent Bulb,
2. Dimmable LED Bulb

Incompatible Bulbs:

1. Fluorescent Bulb,
2. Compact Fluorescent Bulb,
3. Normal LED Bulb,
4. Energy Saving Bulb

Capacitor: Designed To Eliminate The Current Leak And Stop The Flickering. It Installed To The Light Bulb As Below:



FAQ

- **Q: How does the dimmer switch work?**

- A: The dimmer switch is activated by pressing and holding on the front panel to adjust the lighting intensity of the light bulbs. Click the middle button to turn on/off, long press to brighten, release and long press again to dim.

- **Q: What is the purpose of the capacitor?**

- A: The capacitor is designed to eliminate current leaks and stop flickering. It should be installed with light bulbs for proper operation.

Documents / Resources

	SmartWise T1R1W 1 Button SmartWise Touch Switch [pdf] Instruction Manual 1 Way, 2 Way, 3 Way, T1R1W 1 Button SmartWise Touch Switch, T1R1W, 1 Button SmartWise Touch Switch, SmartWise Touch Switch, Touch Switch
---	--

References

- [User Manual](#)

[Manuals+](#), [Privacy Policy](#)

This website is an independent publication and is neither affiliated with nor endorsed by any of the trademark owners. The "Bluetooth®" word mark and logos are registered trademarks owned by Bluetooth SIG, Inc. The "Wi-Fi®" word mark and logos are registered trademarks owned by the Wi-Fi Alliance. Any use of these marks on this website does not imply any affiliation with or endorsement.