

smartwares
SH4-90155
Wireless Door
Window Sensor



smartwares SH4-90155 Wireless Door Window Sensor Instruction Manual

[Home](#) » [smartwares](#) » smartwares SH4-90155 Wireless Door Window Sensor Instruction Manual 

Contents

- [1 smart wares SH4-90155 Wireless Door Window Sensor](#)
- [2 Specifications](#)
- [3 Operation of the Sender](#)
- [4 Installing the Sender](#)
- [5 Inserting the battery](#)
- [6 PAIRING THE SENDER WITH A RECEIVER](#)
- [7 FAQs](#)
- [8 Documents / Resources](#)
 - [8.1 References](#)
- [9 Related Posts](#)

smartwares

smart wares SH4-90155 Wireless Door Window Sensor



Specifications

- Battery: 1 x 3VDC, type CR 2032 (incl.)
- Frequency: 433.92MHz
- Maximum range: 30 m
- Maximum RF output: 0dBm
- Time adjustment: 0 – 20 min

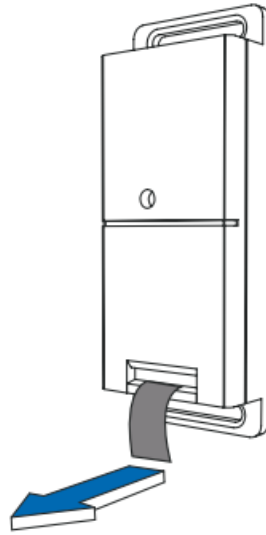
Operation of the Sender

With this door/window sensor, you can control a light or other device by opening a door or window. The receiver automatically turns off when the pre-set time duration expires or when the door/window closes.

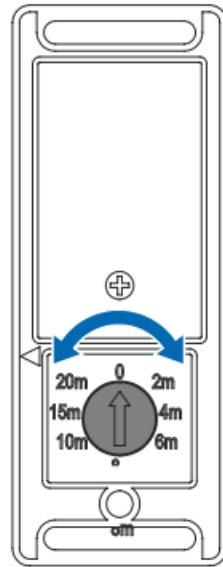
Installing the Sender

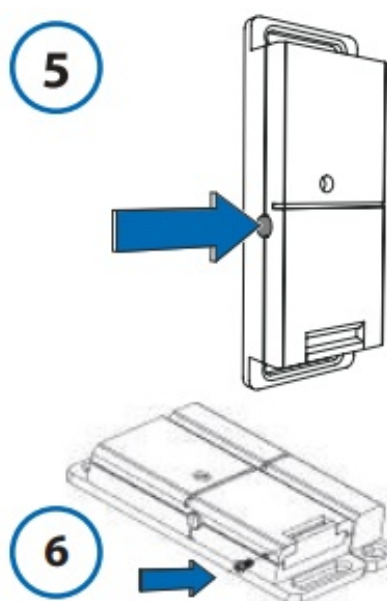
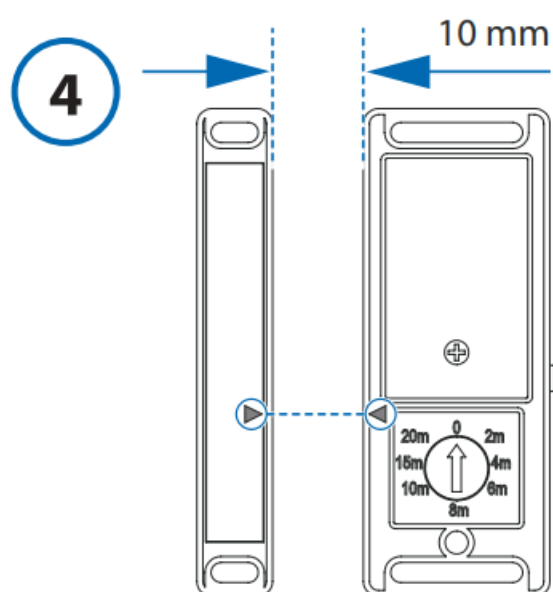
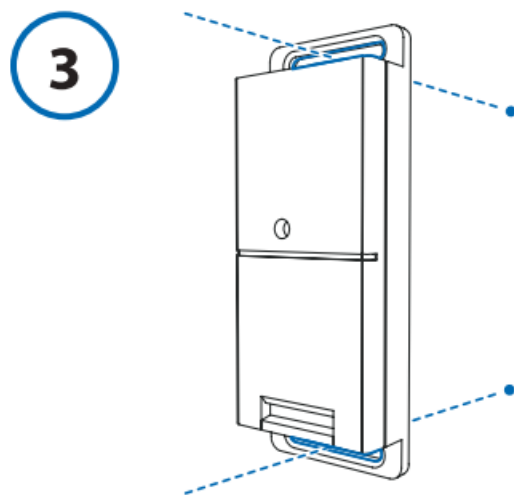
- **A.** Activate the battery by pulling out the tab from the sender (1).

1



2





- **B.** Set the switch-off time to the preferred position by rotating the rotary switch between 0 and 20 min (2). 2-20 min: After the set time has expired, the receiver will automatically switch off.
0 min: The receiver remains switched on until the door or window is closed.

- **C.** Mount the sender (3.B) on the door frame or window frame, where the door or window opens. Use the supplied screws and plugs or double-sided tape.
- **D.** Mount the magnetic component (3.A) on the moving part of the door or window, opposite of the sender with a maximum distance of 1 cm.

Attention: The arrow of the magnet must point to the arrow of the sender and must be aligned.

Inserting the battery

The battery is located at the bottom of the sensor. Use a screwdriver to remove the screw for the back cover. Insert the battery (check polarity) and restore the screw and back cover to the sensor. (6).

PAIRING THE SENDER WITH A RECEIVER

- A. Follow the instructions of the receiver to put it in pairing mode.
- B. Press and hold the "ON" button on the sender for 2 seconds (5) to pair it with a receiver. The LED on the receiver will light up.
- C. Repeat these steps for any other receiver.

FAQs

How do I activate the battery?

To activate the battery, pull out the tab from the sender.

How far is the maximum range of the product?

The maximum range of the product is 30 meters.

How do I pair the sender with the receiver?

To pair the sender with a receiver, follow the receiver's instructions to put it in pairing mode, then press and hold the ON button on the sender for 2 seconds to complete the pairing process.

EU address: smart wares

Europe

Swaardvenstraat 65

5048 AV Tilburg

The Netherlands

www.smartwares.eu

UK address

smart wares

Safety and Lighting Ltd.

Meriden House, 6

Great Cornbow Halesowen

West Midlands, B63 3AB

United Kingdom

Documents / Resources



[smartwares SH4-90155 Wireless Door Window Sensor](#) [pdf] Instruction Manual
SH4-90155 Wireless Door Window Sensor, SH4-90155, Wireless Door Window Sensor, Window Sensor

References

- [User Manual](#)

[Manuals+.](#) [Privacy Policy](#)

This website is an independent publication and is neither affiliated with nor endorsed by any of the trademark owners. The "Bluetooth®" word mark and logos are registered trademarks owned by Bluetooth SIG, Inc. The "Wi-Fi®" word mark and logos are registered trademarks owned by the Wi-Fi Alliance. Any use of these marks on this website does not imply any affiliation with or endorsement.