



## smartwares Luton/Bolton Instructions

[Home](#) » [smartwares](#) » smartwares Luton/Bolton Instructions 

### Contents

- [1 smartwares Luton/Bolton](#)
- [2 DIMENSION](#)
- [3 OVERVIEW](#)
- [4 INSTALLATION](#)
- [5 Documents / Resources](#)
- [6 Related Posts](#)



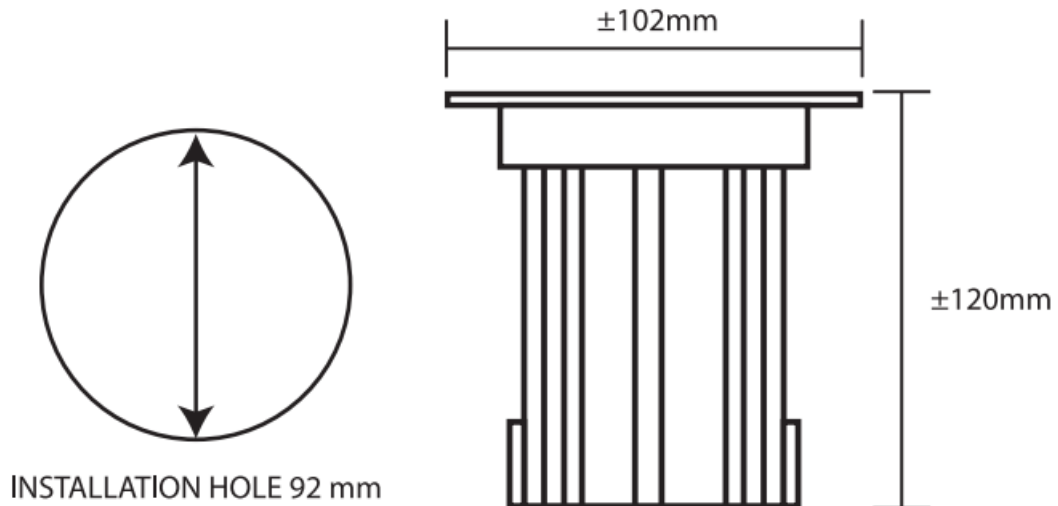
### smartwares Luton/Bolton



- Protection class 1: the Fitting must be earthed.

- Strip the wire to the indicated length.
- Connect using the specified cable.
- Any broken safety glass must be replaced immediately.

## DIMENSION

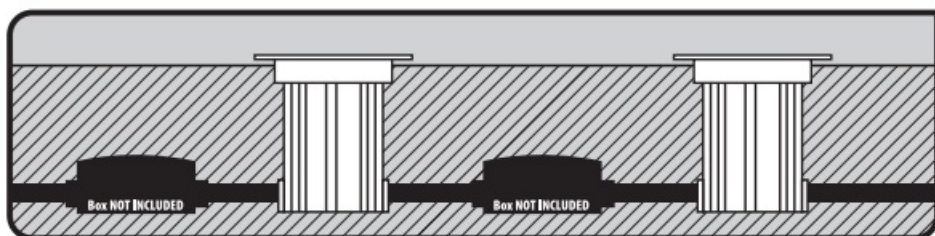
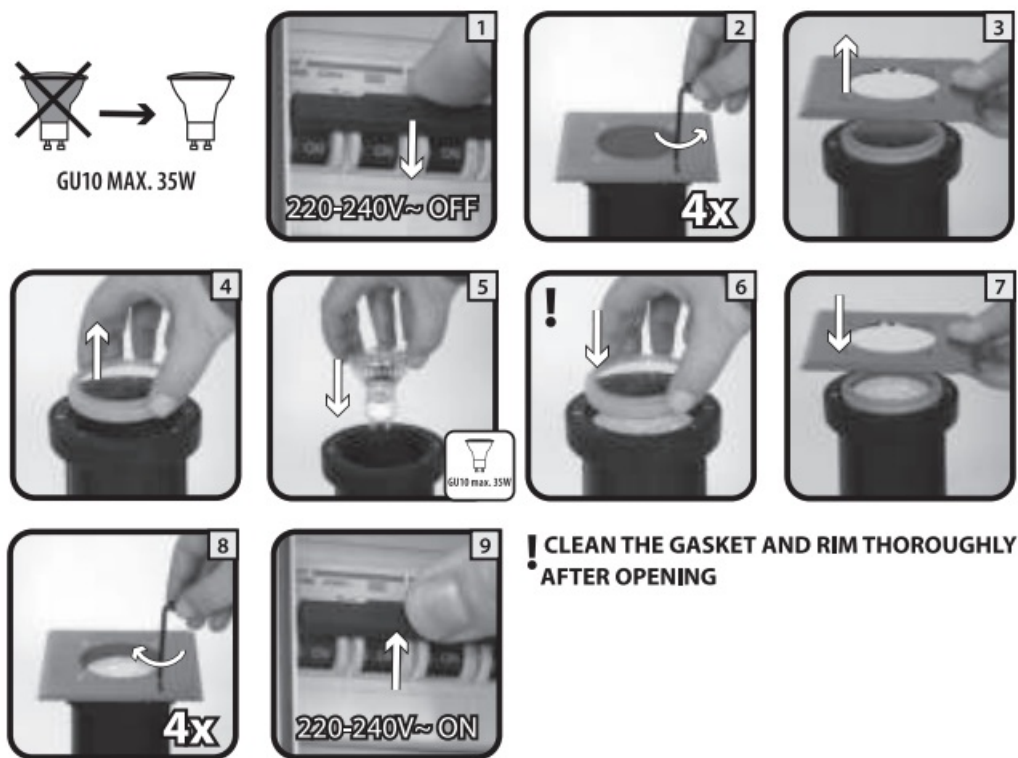
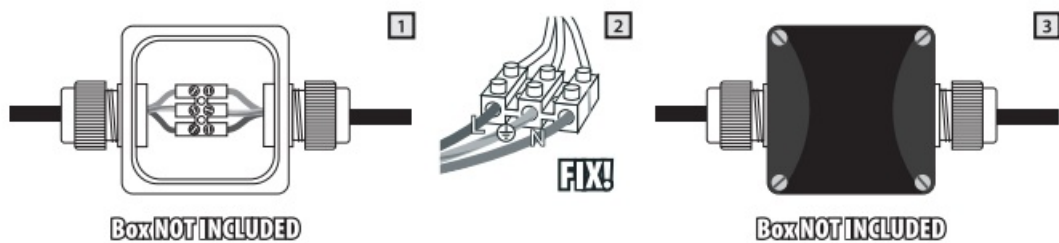


## OVERVIEW

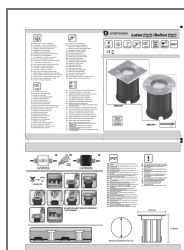
This fixture is dust tight and is protected against water immersion up to 1m for 30mins



## INSTALLATION



## Documents / Resources



[smartwares Luton/Bolton](#) [pdf] Instructions  
Luton Bolton, Luton, Bolton, 5000.459, 5000.461, 01.586.20, 01.586.21