



smartwares CS72SEC 4.3 Inch TFT Colour Camera System User Manual

[Home](#) » [smartwares](#) » smartwares CS72SEC 4.3 Inch TFT Colour Camera System User Manual 



CS72SEC
4.3" TFT Colour Camera System



User Manual

Contents

[1 SPECIFICATIONS](#)

[2 INSTALLATION](#)

[3 PRODUCT](#)

[GUARANTEE](#)

[4 DISPOSAL](#)

[5 MAINTENANCE](#)

[6 SAFETY](#)

[7 Documents / Resources](#)

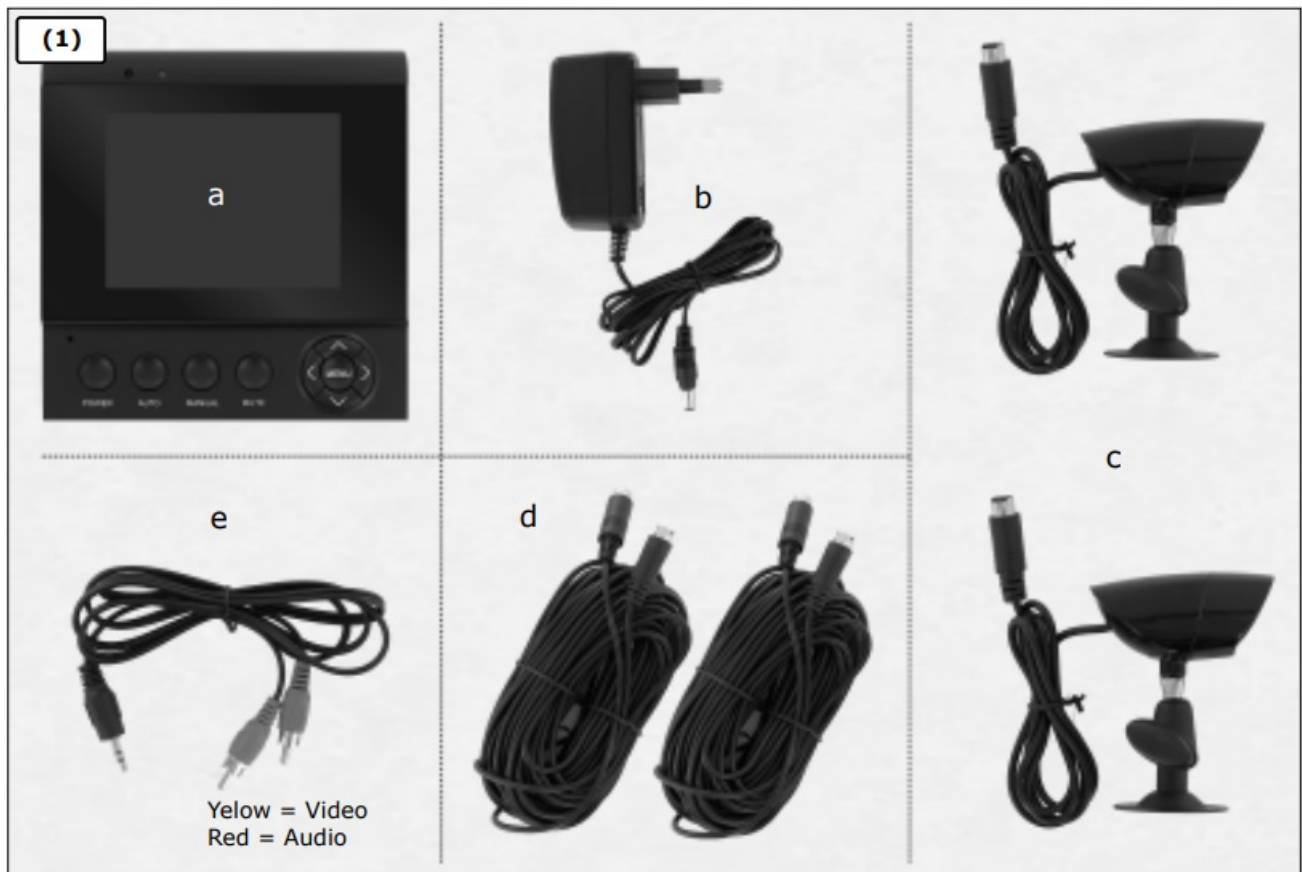
[8 Related Posts](#)

SPECIFICATIONS

Screen	: 4.3" colour TFT
Resolution	: 320X240
Viewing angle	: 62 degrees
Camera resolution	: 640X480
Min. Illumination	: 0.5 lux
Voltage monitor	: Input 12VDC 1000mA
Operating temperature	: -10°C ~ +50°C

Adaptor:

Input	: 100-240V~50/60Hz
Output	: 12V DC, 1000mA



CS72SEC TFT COLOUR CAMERASYSTEM

With the CS72SEC camera system you can monitor 2 cameras to help you feel safe and keep an eye out on your surroundings. The wired cameras will give you a secure image and with the one way intercom you can also hear what is going on.

CONTENT OF THE PACKAGING (1)

- a. LCD monitor
- b. Power adapter
- c. 2x camera
- d. 2x extension cable
- e. AV cable

INSTALLATION

- Plug the power adapter (1b) in an power outlet and then connect it to the monitor (1a) (2)
- The LED is turned on to red when the monitor has power, and to blue when the monitor is working (3)

- Connect both cameras (1c) to the extension cables ((1d) (4) and then plug the cables into sockets on the backside of the monitor
- Before mounting the cameras on desired positions, check for correct working and make sure you have a good image

USE

- Press the POWER button to turn on and off the monitor (5a)
- With the AUTO button the images of the 2 cameras are switched continuously (5b)
- The MANUAL button can be used to switch between the cameras images by hand (5c)
- Press the MUTE button to mute the sound of the intercom (5d) (5)

SETTINGS (6)

- Press the MENU button to open the monitors menu
- Use the UP and DOWN arrows to choose between Brightness, Contrast, Saturation and Volume
- Use the LEFT and RIGHT arrows to adjust the desired setting

TIPS

- To connect to your video recorder or other monitor or TV, use the AV cable (1e)

PRODUCT GUARANTEE

This product has factory warranty according to EU regulations. Guarantee lasts for the number of years shown on the packaging, starting from the date of purchase. Keep the receipt – proof of purchase is required in order to rely on guarantee. In the case of problems, please contact with the store where you purchased the product. For further product information call to our Hotline or visit our website: www.elro.eu . You can also register your product there.

DISPOSAL

Correct Disposal of This Product (Waste Electrical & Electronic Equipment) (Applicable in the European Union and other European countries with separate collection systems)



This marking shown on the product or its literature, indicates that it should not be disposed with other household wastes at the end of its working life. To prevent possible harm to the environment or human health from uncontrolled waste disposal, please separate this from other types of wastes and recycle it responsibly to promote the sustainable reuse of material resources. Household users should contact either the retailer where they purchased this product, or their local government office, for details of where and how they can take this item for environmentally safe recycling. Business users should contact their supplier and check the terms and conditions of the purchase contract. This product should not be mixed with other commercial wastes for disposal.

* Always throw empty batteries to the battery recycling bin.

* If the battery is built-in inside the product, open the product and remove the battery.

MAINTENANCE



The devices are maintenance-free, so never open them. The guarantee becomes void when you open the appliance. Only clean the outside of the devices with a soft, dry cloth or a brush. Prior to cleaning, remove the devices from all voltage sources. Do not use any carboxylic cleaning agents or petrol, alcohol or similar. These attack the surfaces of the devices. Besides, the vapors are hazardous to your health and explosive. Do not use any sharp edged tools, screw drivers, metal brushes or similar for cleaning.

Warning: Protect the battery against fire, too much heat and sunshine

SAFETY

- * Make sure that all electric connections and connection cables meet the pertaining regulations and are in conformity with the operating instructions.
- * Do not overload electrical outlets or extension cords, fire or electric shocks can be the result
- * Please contact an expert in case you have any doubts about the mode of operation, the safety or connecting the appliances.
- * Keep all parts away from young children's reach
- * Do not store this item on wet, very cold or warm places, this can damage the electronic circuit boards.
- * Avoid dropping or shocks, this can damage the electronic boards
- * Never replace damaged power cables yourself! In such a case, remove them from the net and take the devices to a workshop.
- * Repairs or opening of this item may only be performed by an authorised workshop.
- * Wireless systems are subject to interference from cordless phones, microwaves, and other wireless devices operating in the 2.4GHz range. Keep the system AT LEAST 10 ft away from the devices during installation and operation.
- * Do not swallow batteries. Keep batteries out of the reach of children.



<http://www.elro.eu/support/manuals>

Hereby, Smartwares declares that this equipment is in compliance with the essential requirements and other relevant provisions of Directive 1999/5/EC. For the document of conformity go to www.elro.eu or scan the QR code.

Smartwares Safety & Lighting B.V.
P.O. Box 117 - 5126 ZJ Gilze - The Netherlands
Broekakkerweg 15 - 5126 BD Gilze - The Netherlands
T +31 161 455 363
F +31 161 452 991
W www.smartwares.eu

Authorized representative:
Mr. Ad Netten
Quality Manager
Date: 01.02.2013

smartwares safety & lighting Broekakkerweg 15 5126 BD Gilze The Netherlands WWW.SMARTWARES.EU	NL : 0900-2088888	lokaal tarief
	BE : 070-233031	lokaal tarief
	FR : 0825 560 650	15Ct/min.
	DE : +49 (0) 1805 010762	14Ct./Min. dt. Festnetz, Mobil max. 42Ct./Min
	UK : +44 (0) 845 230 1231	
	ES : +34 938427589	

CUSTOMER SERVICE



[smartwares CS72SEC 4.3 Inch TFT Colour Camera System](#) [pdf] User Manual
CS72SEC 4.3 Inch TFT Colour Camera System, CS72SEC, 4.3 Inch TFT Colour Camera System, TFT Colour Camera System, Colour Camera System, Camera System