

SmartThings s48 C Flush Mountable Single Port USB Charger



SmartThings s48 C Flush Mountable Single Port USB Charger Instruction Manual

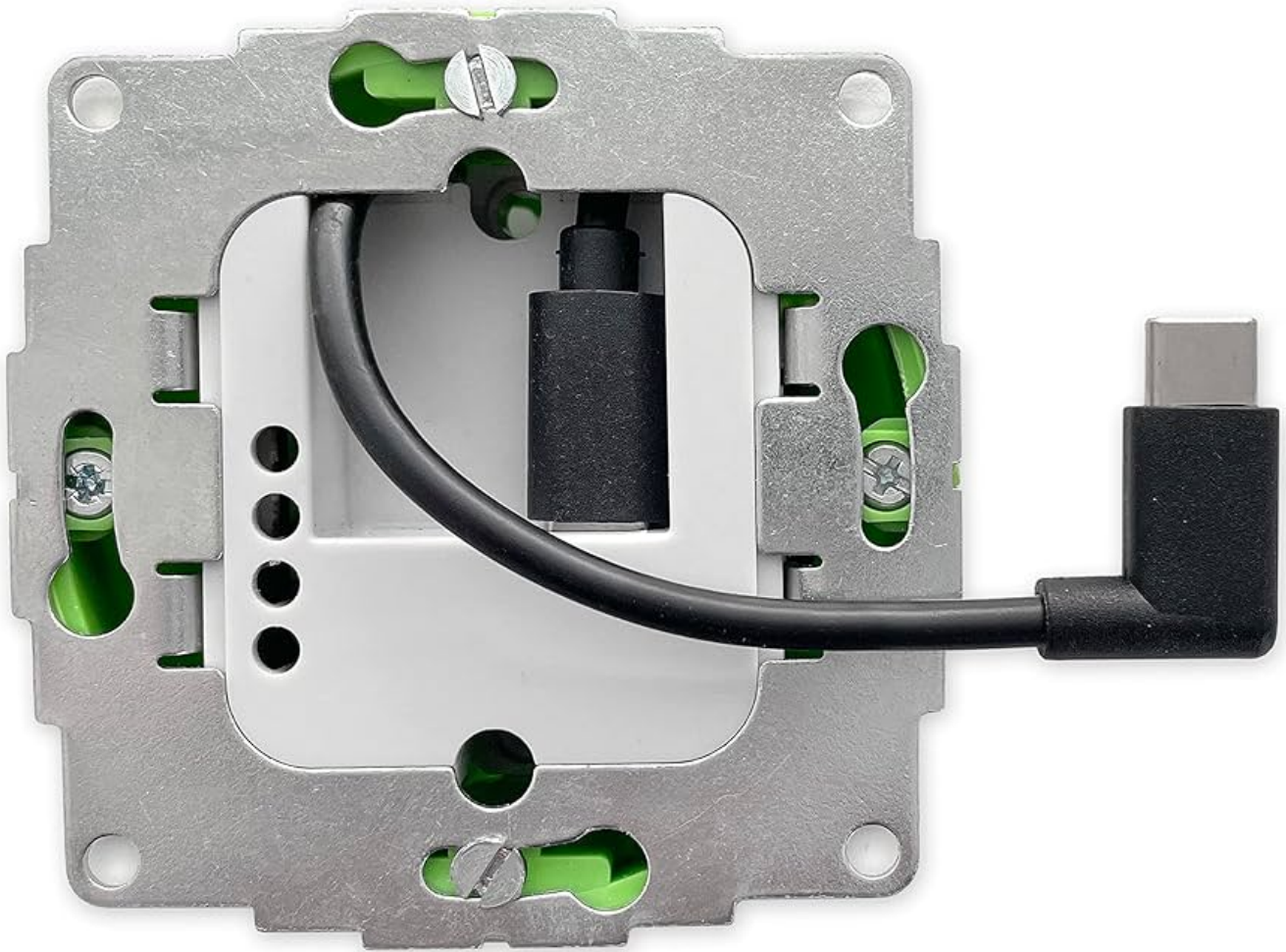
[Home](#) » [SmartThings](#) » SmartThings s48 C Flush Mountable Single Port USB Charger Instruction Manual 

Contents

- [1 SmartThings s48 C Flush Mountable Single Port USB Charger](#)
- [2 Product Information](#)
- [3 Product Usage Instructions](#)
- [4 FAQs](#)
- [5 Dimension](#)
- [6 Installation USB-C cable](#)
- [7 USB power supply](#)
- [8 Instructions for use](#)
- [9 Installation And Using Instruction](#)
- [10 Maintenance and cleaning](#)
- [11 Technical Specifications](#)
- [12 Documents / Resources](#)
 - [12.1 References](#)



SmartThings s48 C Flush Mountable Single Port USB Charger



Product Information

- **Specifications:**

- **Input voltage:** 100 – 250 V~ 50/60 Hz
- **Input current:** Max. 1.5 A
- **Output:**
 - USB 5 V, 3 A max.
 - USB 9V, 2.22 A max.
- **Output power:** 20 Watt max
- **Power loss (Standby consumption):** 50 mW

Product Usage Instructions

- **Installation:**

- Ensure the USB charger is only installed by persons with relevant electrical qualifications and experience to prevent risks to life and property.
- Contact a qualified electrical engineer for installation.

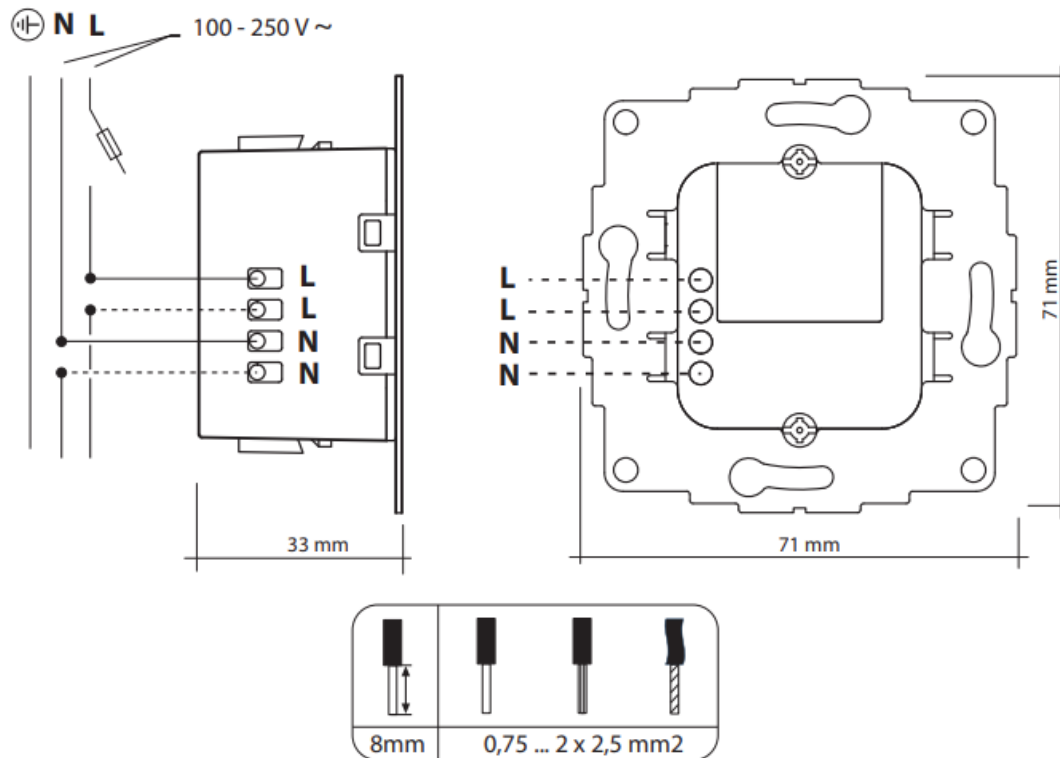
- **Maintenance and Cleaning:**

- This USB Charger is maintenance-free. Repairs should only be carried out by a qualified electrician.
- Clean the unit with a soft, clean, dry, lint-free cloth only.
- Avoid using solvent-based cleaning agents as they may damage the plastic housing. Do not use wet cloths or sponges to clean the socket outlet.

FAQs

- **Q: What should I do if I encounter technical issues with the USB charger?**
 - **A:** In case of technical issues, please contact a qualified electrician for assistance or visit our website at www.smart-things.com for the latest information.

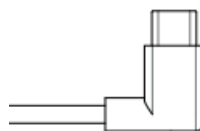
Dimension

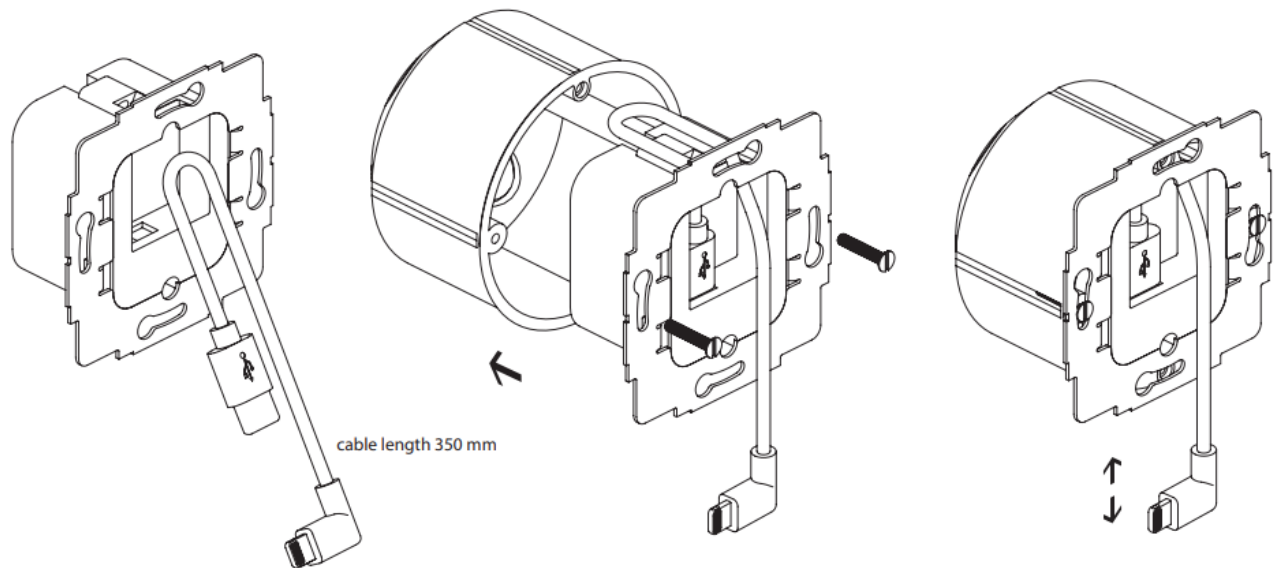


Installation USB-C cable

charge with USB-C cable

- MPNo. sCh-20W-USB-C-1.0
- EAN 4260258612486





USB power supply

- **Type:** JP – 3503 UP-ST
- **Input:** 100 – 250 V~ / 50 – 60 Hz,
- **Output:**
 - USB 5 V , 3 A max.
 - USB 9V , 2,22 A max.
 - WEEE DE 64398562

Instructions for use

Function

- This flush-mountable single-port USB charger charges the batteries of mobile devices.
- The USB charger is ideally suited for charging tablets that are installed on the wall, using commercially available wall mounts.
- The maximum permissible voltage is 250V~ 50/60Hz. 16A.
- Only install and use this IP20-protected product in protected locations with an ambient temperature between 5°C and 35°C.
- Avoid the influence of moisture, dust, sun or other heat radiation.
- For prolonged use, the housing of this product may become warm. This is normal.

HAZARD WARNING!

- Operate this device only in indoor areas. Avoid the influence of moisture, dust, sun or other heat radiation.
- This USB charger is part of the building installation. The relevant standards and directives of the country must be observed during planning and construction. The operation of the device is permissible only on the 230V / 50 Hz alternating current network.
- Work on the 230V mains may only be carried out by a certified electrician qualified in your country. The applicable accident prevention regulations must be observed.

- To avoid an electric shock on the device, please disconnect the mains voltage to the device (switch off the circuit breaker). Failure to comply with the installation instructions may cause fire or other hazards.
- The installation may only be carried out in commercially available flush-mounted wall boxes (installation boxes), with a minimum depth of 40mm.
- When connecting the device terminals, observe the type of cabling which are permissible for this purpose.
- Pay close attention to the wiring diagram!

Mandatory information following the equipment safety standard:

- **Note!** Only to be installed by persons with relevant electrical qualifications and experience!*)
- Improper installation will result in risk to your own life and risk to the life of persons using the electrical installation.
- With an improper installation, you risk serious material damages, for example, a fire. You are personally responsible for personal injury and material damages. Please contact a qualified electrical engineer.

Installation And Using Instruction

Specialist skills required for installation

In particular, the following special knowledge is required for the installation:

- The applicable e“5 Safety Rules”: disconnect; protect against switching on; verify mains power disconnect; earthing and short-circuiting; covering adjacent current-carrying components or making them inaccessible.
- Selection of suitable tools, measuring equipment and – if necessary – personal protection equipment;
- Evaluation of measurement results;
- Selection of the electrical installation material to ensure compliance with the shut-down conditions;
- IP-Protection classes;
- Installation of electrical installation material;
- the resulting connection conditions (conventional protective multiple earthing, safety earthing, additional measures required etc.).

Maintenance and cleaning

This USB charger is maintenance-free. Any repairs should only be carried out by a qualified electrician. Clean the unit with a soft, clean, dry, lint-free cloth only. Please do not use solvent-based cleaning agents. The plastic housing could be affected by this. Do not use wet cloths or sponges to clean the socket outlet. RoHS/WEEE Compliance Statement (Recycling Instructions) European Directive 2012/19/EU requires that equipment bearing the trashcan symbol on the product and/or its packaging must not be disposed of with unsorted municipal waste. The symbol indicates that this product should be disposed of separately from regular household waste streams. It is your responsibility to dispose of this via designated collection facilities appointed by the government or local authorities. Correct disposal and recycling will help prevent potential negative consequences to the environment and human health. For more detailed information about the disposal of your old equipment, please contact your local authorities, waste disposal service, or the shop where you purchased the product.

Technical Specifications

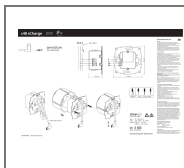
Technical Specifications USB Charger

- **Input voltage** 100 – 250 V~ 50/60 Hz
- **Input current Max.** 1,5 A
- **Output:**
 - USB 5 V , 3 A max
 - USB 9V , 2,22 A max.
- **Output power** 20 Watt max
- **Power loss (Standby consumption)** ≤50 mW

Documentation

- © Smart Things, Germany.
- All rights reserved.
- We accept no liability for technical or printing errors and their consequences.
- All trademarks and property rights are acknowledged.
- Changes in the sense of technical progress may be made without prior notice.
- www.smart-things.com. Made in China
- s48 -04-0100 sCharge 20 W manual
- smart things solutions GmbH
- Grubmühlerfeldstr. 54
- 82131 Gauting, GERMANY
- info@smart-things.com.
- **For the latest information please visit** www.smart-things.com.

Documents / Resources



[SmartThings s48 C Flush Mountable Single Port USB Charger](#) [pdf] Instruction Manual
s48 C, s48 C Flush Mountable Single Port USB Charger, Flush Mountable Single Port USB Charger, Mountable Single Port USB Charger, Single Port USB Charger, Port USB Charger, USB C harger, Charger

References

- [📱 Tablet und Smartphone Wandhalterungen mit Unterputz-Netzteil](#)
- [User Manual](#)

[Manuals+ Privacy Policy](#)

This website is an independent publication and is neither affiliated with nor endorsed by any of the trademark owners. The "Bluetooth®" word mark and logos are registered trademarks owned by Bluetooth SIG, Inc. The "Wi-Fi®" word mark and logos are registered trademarks owned by the Wi-Fi Alliance. Any use of these marks on this website does not imply any affiliation with or endorsement.