

SmartSetup Matter Thread Smart Switch User Manual



Contents

- 1 Smart Setup Matter Thread smart switch**
 - 1.1 1 Product Description**
 - 1.2 2 Basic Product Functions**
 - 1.3 3 Reset**
 - 1.4 4 Add to Alexa via matter**
 - 1.5 5 Add to Apple via Matter**
 - 1.5.1 1 Check the environment**
 - 1.5.2 2 Network configuration**
 - 1.6 6 Add to Google via Matter**
 - 1.6.1 1 Check the environment**
 - 1.6.2 2 App Distribution Network**
 - 1.7 US Switch**
 - 1.8 AU Switch**
- 2 Documents / Resources**
 - 2.1 References**
- 3 Related Posts**

Smart Setup Matter Thread smart switch

1 Product Description

Smart Switch is developed according to the Matter standard protocol, and have passed Matter certification of CSA. They can be bound and controlled through ecosystem platforms such as Alexa App/Echo, Apple Home App/Home Pod Mini, Google Home App/Google Nest Hub and Smart things App/Samsung Smart home Hub.

2 Basic Product Functions

Voice control: The device can be controlled by voice through Alexa, Siri, Google Assistant, or other devices that have passed Matter certification App control: Device control can be achieved through Alexa, Apple Home, Google Home, SmartThings or other apps that have already solved the Matter SDK.

Device reset: Press and hold the switch button for 10 seconds to reset, with the indicator light flashing 3 times to indicate a reset.

Device pairing: There is a Matter QR code and an 11-digit short code on each device. To bind a device, you can use the matching App to scan the QR code or enter the 11-digit short code for pairing and binding.

3 Reset

Press to turn the socket ON or OFF.

Press and hold(for 10 seconds) until the LED flashes to initiate the factory reset the Smart Switch.

4 Add to Alexa via matter

1. Check the environment

- 1) The version of the Alexa App is greater than or equal to 2.2.491118.0.
- 2) Having a Matter control hub, any of the following devices can be used:

Device	Version
Echo	Echo (4th gen) Echo Hub Echo Plus (2nd gen) Echo Show 8 (3rd gen) Echo Show 10 (3rd gen) Echo Studio Eero 6, eero 6+, eero Pro 6, eero Pro 6E, eero Max 7

5 Add to Apple via Matter

1 Check the environment

1. The system version of the Apple phone is greater than or includes version 16.2.
2. Having a Matter control hub, any of the following devices can be used: Home Pod, Home Pod mini, Apple TV.

2 Network configuration

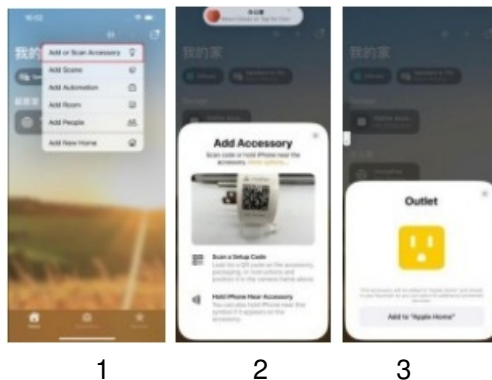
Step 1:Put the device in pairing mode.

Step 2:Launch your Home App. TAP the “+” and tap “Add or Scan Accessory”.

Step 3: Scan the setup QR code on your device.

Step 4: Choose a location for your deice and give it a name.

QR code pairing interface:

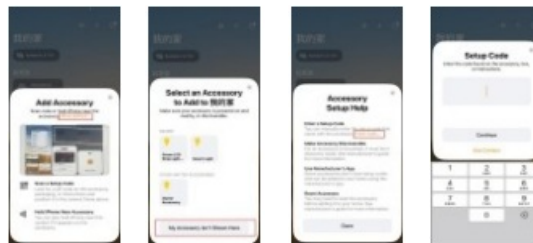


Pairing code pairing interface:

Step 1: Launch your Home App. TAP the “+” and tap “Add or Scan Accessory”.

Step 2: Choose “More Options”, click “My Accessories” to display it here.

Step 3: Choose “Enter Code” to enter the pairing code pairing interface. then follow the prompts to add it.



6 Add to Google via Matter

1 Check the environment

- 1, Install the Google Home app.
2. Have a control hub that supports Matter, and any of the following devices will suffice: Nest Hub (2nd gen), Nest Hub Max, Nest Wifi Nest Wifi Pro

2 App Distribution Network

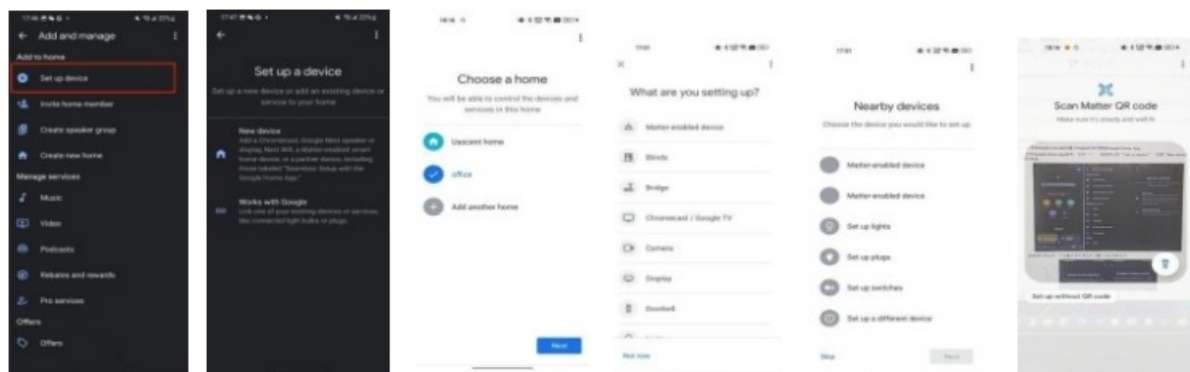
Step 1: Launch your Google Home App and tap “+”.

Step 2: Choose “Set up device” and tap “New device” to add a new device

Step 3: Choose Matter and tap “Yes” on the confirming page

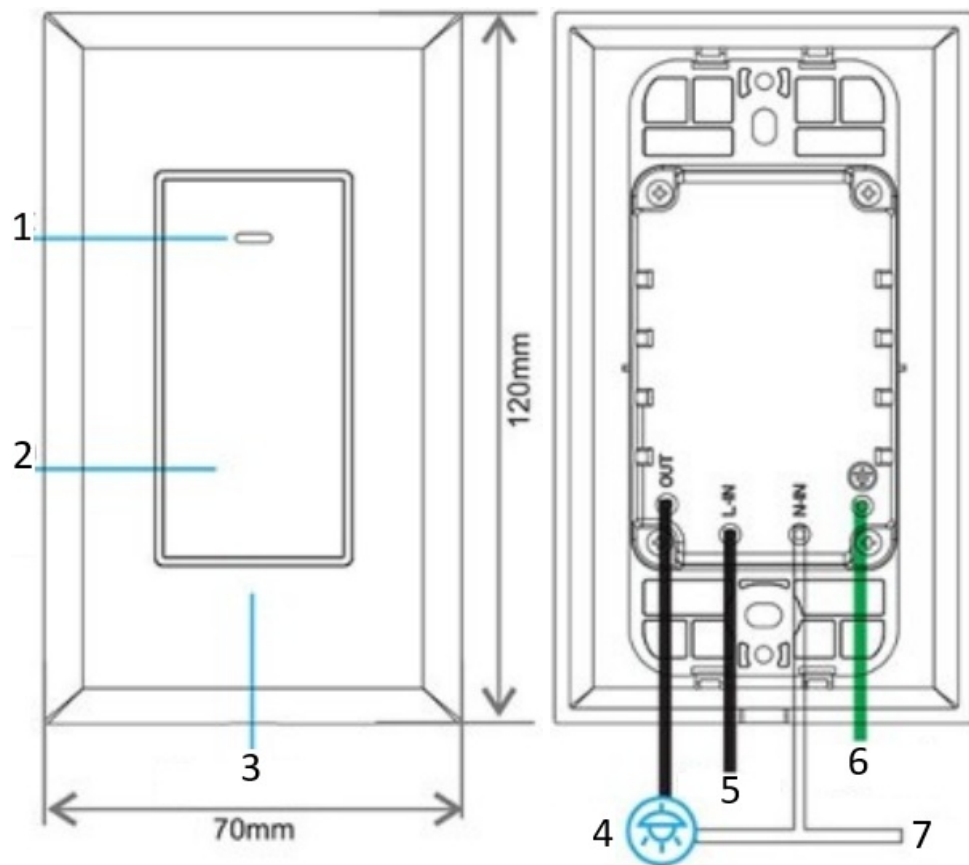
Step 4: Scan the setup QR code on your device. If your device comes with out a QR code but a numeric code, you can tap “Set up” without QR code and enter the numeric code.

Step 5: Tap Done when the device is connected.



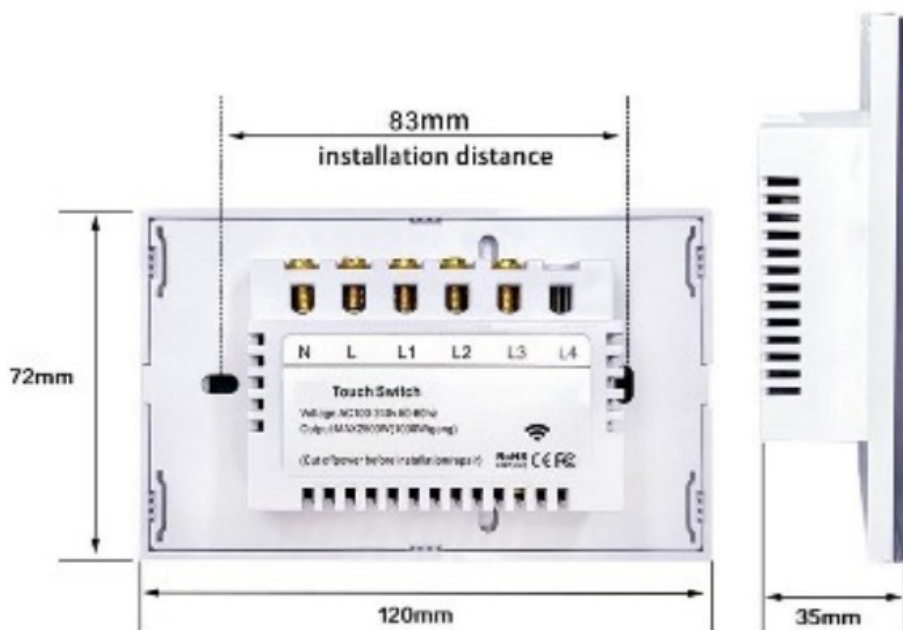
US Switch

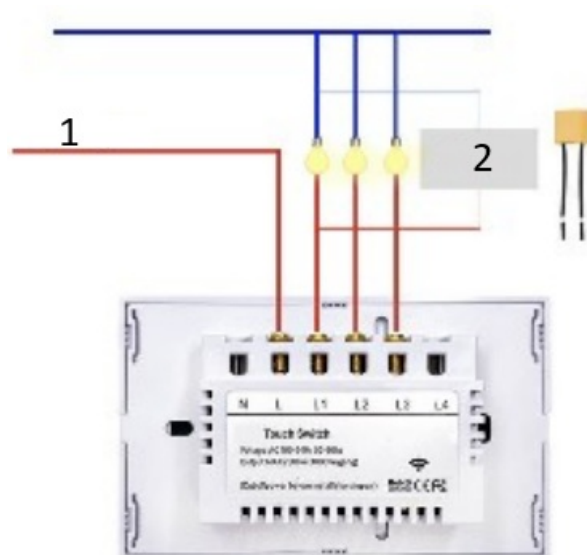
Circuit Connection Diagram



1. Indicator light
2. ON/OFF Button
3. Face Plate
4. Load
5. Live wire
6. Ground
7. Neutral Wire

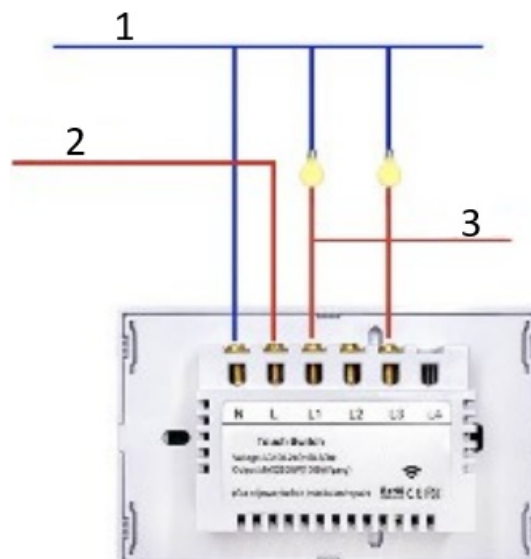
AU Switch





Zero fire wiring diagram

1. Live Wire
2. Capacitor



Single fire version wiring diagram

1. Neutral Wire
2. Fire wire
3. Light line

Documents / Resources

	SmartSetup Matter Thread Smart Switch [pdf] User Manual Matter Thread Smart Switch, Matter Thread Smart Switch, Thread Smart Switch, Smart Switch, Switch
---	--

References

- [User Manual](#)

Manuals+. Privacy Policy

This website is an independent publication and is neither affiliated with nor endorsed by any of the trademark owners. The "Bluetooth®" word mark and logos are registered trademarks owned by Bluetooth SIG, Inc. The "Wi-Fi®" word mark and logos are registered trademarks owned by the Wi-Fi Alliance. Any use of these marks on this website does not imply any affiliation with or endorsement.