



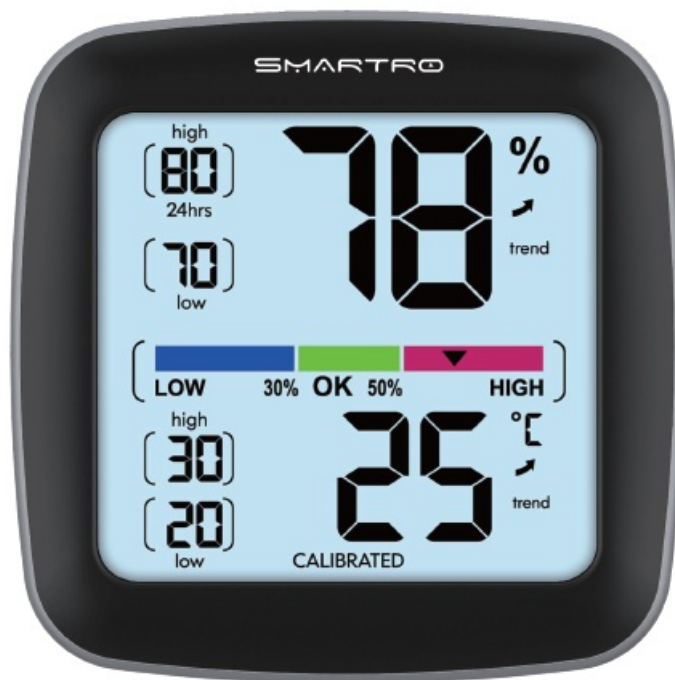
Smartro SC42 Temperature and Humidity Monitor User Manual

[Home](#) » [Support](#) » Smartro SC42 Temperature and Humidity Monitor User Manual 

Contents

- 1 Smartro SC42 Temperature and Humidity Monitor User Manual
- 2 Know Your Device
 - 2.1 FRONT
 - 2.2 BACK
- 3 TABLE STAND
- 4 SET UP
 - 4.1 Install or Replace Batteries
 - 4.2 Toggle Fahrenheit or Celsius
 - 4.3 Placement for Maximum Accuracy
- 5 OPERATION
 - 5.1 Using the Humidity Monitor
 - 5.2 High and Low Records
 - 5.3 Backlight
 - 5.4 Calibration
- 6 Specifications
- 7 After-sales Support
- 8 DOWNLOAD
- 9 References
- 10 Related Posts

Smartro SC42 Temperature and Humidity Monitor User Manual



Instruction Manual
Temperature and Humidity Monitor
Model Number: SC42



Temperature



Humidity

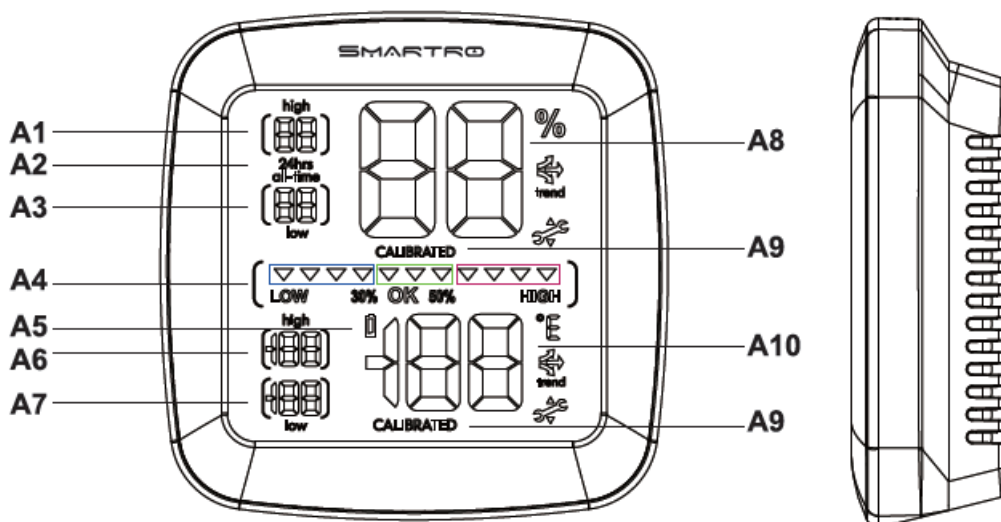


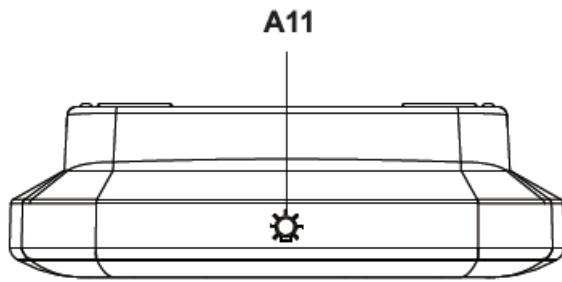
°C/°F



Backlight

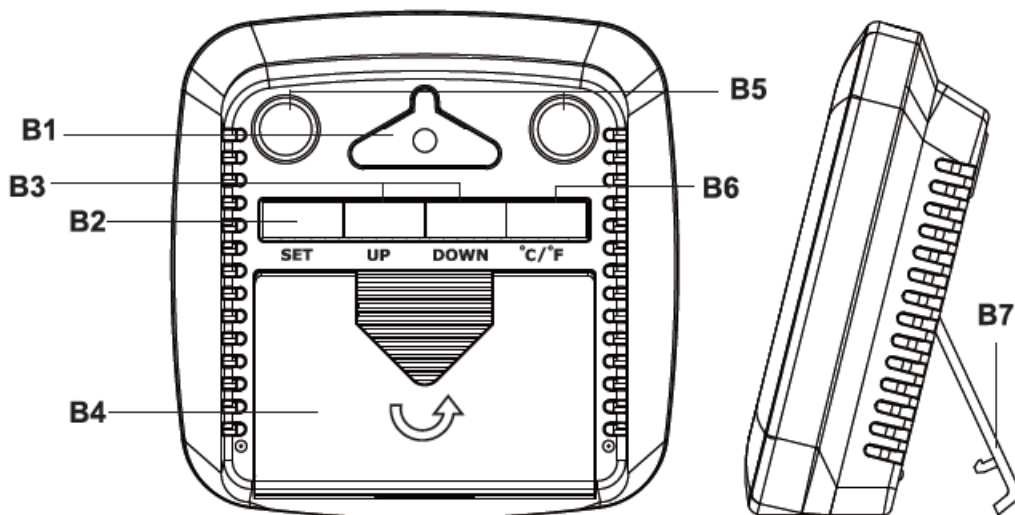
Know Your Device





FRONT

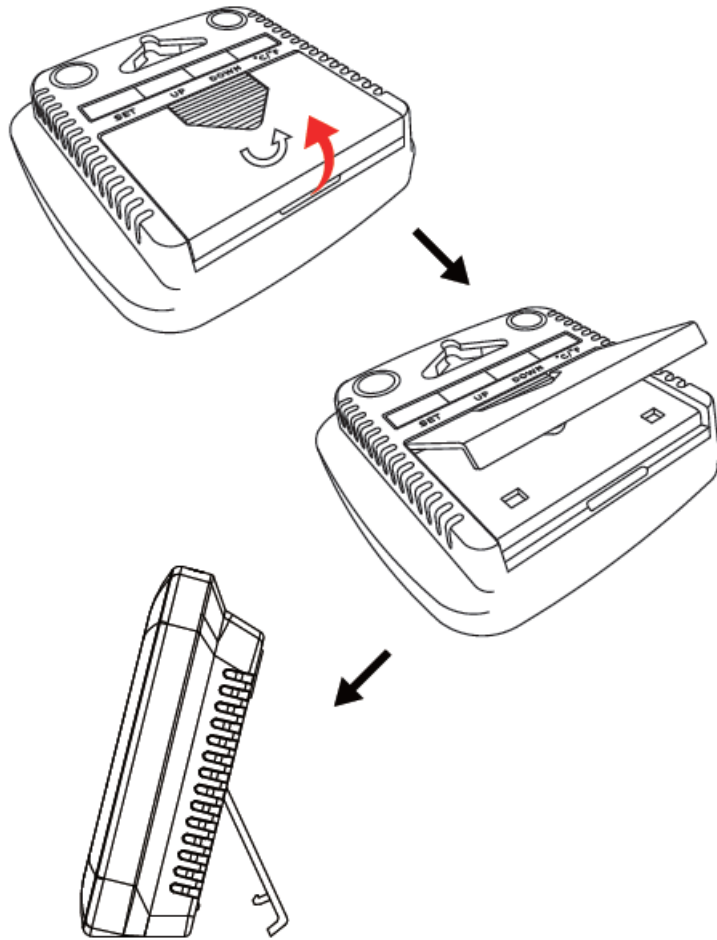
- A1. Highest Humidity Record
- A2. Record Time Span Indicates viewing records for last 24 hours or all-time.
- A3. Lowest Humidity Record
- A4. Humidity Level Indicator Indicates a high, low or ideal humidity comfortable level.
- A5. Low Battery Indicator • A6. Highest Temperature Record
- A7. Lowest Temperature Record
- A8. Current Humidity Arrow icon indicates trend of humidity.
- A9. CALIBRATED Indicator
- A10. Current Temperature Arrow icon indicates trend of temperature.
- All. Backlight Touch the t button to temporarily activate the backlight.



BACK

- B1. Integrated Hanger Opening
- B2. SET Button For calibration setup.
- B3. UP & DOWN Button For calibration and toggling records being shown.
- B4. Battery Compartment
- B5. Magnetic Attachments
- B6. °C/°F Button For toggling temperature units.
- B7. Table Stand

TABLE STAND



SET UP

Install or Replace Batteries

Batteries must be installed for this product to operate.

1. Slide off the battery cover.
2. Insert 2xAM batteries into the battery compartment. Ensure that the battery polarities ["+" and "-"] are correct.
3. Close the battery compartment.
4. The monitor will automatically enter into normal service mode.

Toggle Fahrenheit or Celsius

To select Fahrenheit (° F) or Celsius (°C), press "°C/°F" button located on the back of the monitor.

Placement for Maximum Accuracy

Because it is equipped with high performance sensor, this device is sensitive to surrounding environment conditions. Placement in a proper location is critical to the accuracy and performance of this product. Place the monitor in a dry area, free of dirt and dust. To ensure accurate temperature measurement, place monitor out of direct sunlight and away from any heat source or vents. To ensure accurate humidity measurement, place monitor away from humidity sources.

The monitor comes with built in magnets to attach to a metal surface.

OPERATION

Using the Humidity Monitor


The Humidity Level Indicator easily conveys a low, high or ideal indoor humidity level for your home and health.

High and Low Records

- High and low records are displayed for temperature and humidity.
- 24hrs records are the maximum and minimum readings recorded of the last 24 hours.
- All-time records are the maximum and minimum readings recorded since the batteries were installed.
- Press the " UP " or " DOWN " button in normal mode to enter the 24hrs or All-time mode of the maximum and minimum values.
- Hold " UP " button to manually clear the high records of temperature and humidity currently being viewed.
Dashes display to confirm you have cleared.
- Hold " DOWN " button to manually clear the low records of temperature and humidity currently being viewed.
Dashes display to confirm you have cleared.

Note: Records will be erased if the batteries are removed.

Backlight

Touch the  or press any button to temporarily activate the backlight.

Note: The backlight can't be set to be on permanently.

Calibration

The temperature and humidity readings can be calibrated on the display to improve accuracy. Calibration can improve accuracy when product placement or environmental factors impact your data accuracy.

- To access calibration mode, hold " SET " button for 3 seconds. The display of the humidity flashes.
- Press " UP " or " DOWN " button to correct the display of the humidity.
CALIBRATED appears on the display.
- Press "SET" button to confirm the setting.
The temperature display flashes.
- Press " UP " or " DOWN " button to correct the display of the temperature.
CALIBRATED appears on the display.
- Press "SET" button to confirm the setting.

Note:

- 10 seconds of inactivity during setting, the display will save the adjustments and exit calibration mode.
- Calibrations will be erased if the batteries are removed.

- This product has passed professional testing and calibration. No extra calibration is required before using.

Specifications

Temperature Range	-4 ° F to 158 ° F (-20° C to 70 ° C)
Temperature Accuracy	±0.5° F
Humidity Range	1% – 99% RH (relative humidity)
Humidity Accuracy	±2%RH
Power Supply	2x 1.5v AAA batteries

After-sales Support

If your device fails to work or your experience with this product less than satisfactory in anyway, please do not hesitate to contact us. Join our Instagram or Facebook group for more support and discount information.

Phone: +1(323)287-5798

E-Mail: support@smartro.co

Facebook: http://bit.ly/smartro_01

Instagram: smartro_01

Website: <https://www.smartro.co/>

DOWNLOAD

Smartro SC42 Temperature and Humidity Monitor User Manual – [[Download PDF](#)]

References

- [User Manual](#)