



SMARTMESH 10A Smart Plug Powered by Jio IoT with Energy Monitoring User Guide

[Home](#) » [SMARTMESH](#) » SMARTMESH 10A Smart Plug Powered by Jio IoT with Energy Monitoring User Guide



SMARTMESH

Elevate your Lifestyle
SMART PLUG

Contents

- [1 10A Smart Plug Powered by Jio IoT with Energy Monitoring](#)
- [2 STEP 1 Download and Register](#)
- [3 STEP 2 Initial Set-up](#)
- [4 STEP 3 Add Device](#)
- [5 Documents / Resources](#)
 - [5.1 References](#)
- [6 Related Posts](#)

10A Smart Plug Powered by Jio IoT with Energy Monitoring



Quick User Guide

Important: Please read before using this product

STEP 1 Download and Register

1.1 Download SMARTMESH app from App Store or Google Play Store.



Scan the QR code
to download

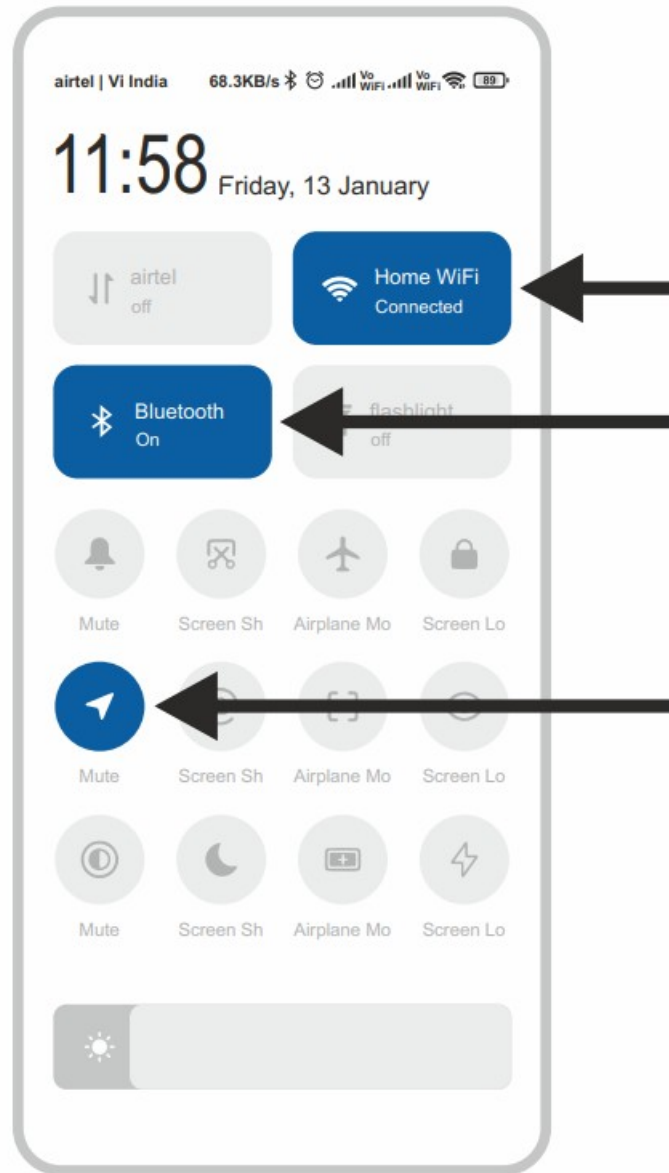
<https://smartmesh.tech/sm/app/>

1.2 Open App and register your account



STEP 2 Initial Set-up

2.1 Connect your mobile with home Wi-Fi(2.4GHz)

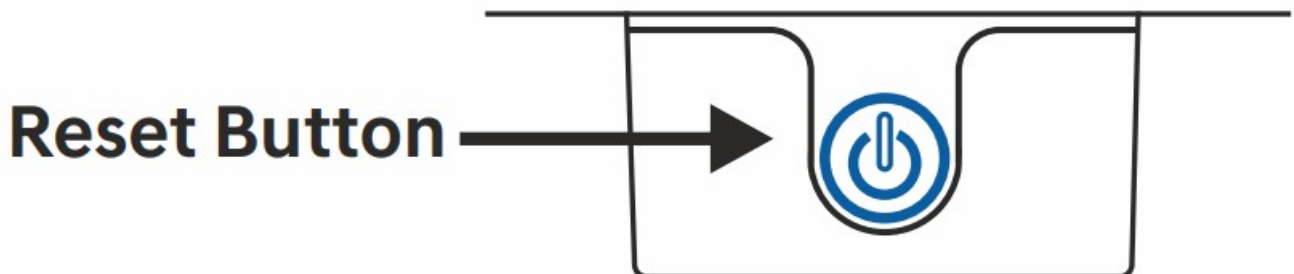


2.2 Allow Bluetooth and Location in your mobile.

2.3 Fit SMARTMESH smart plug in socket and turn on power.

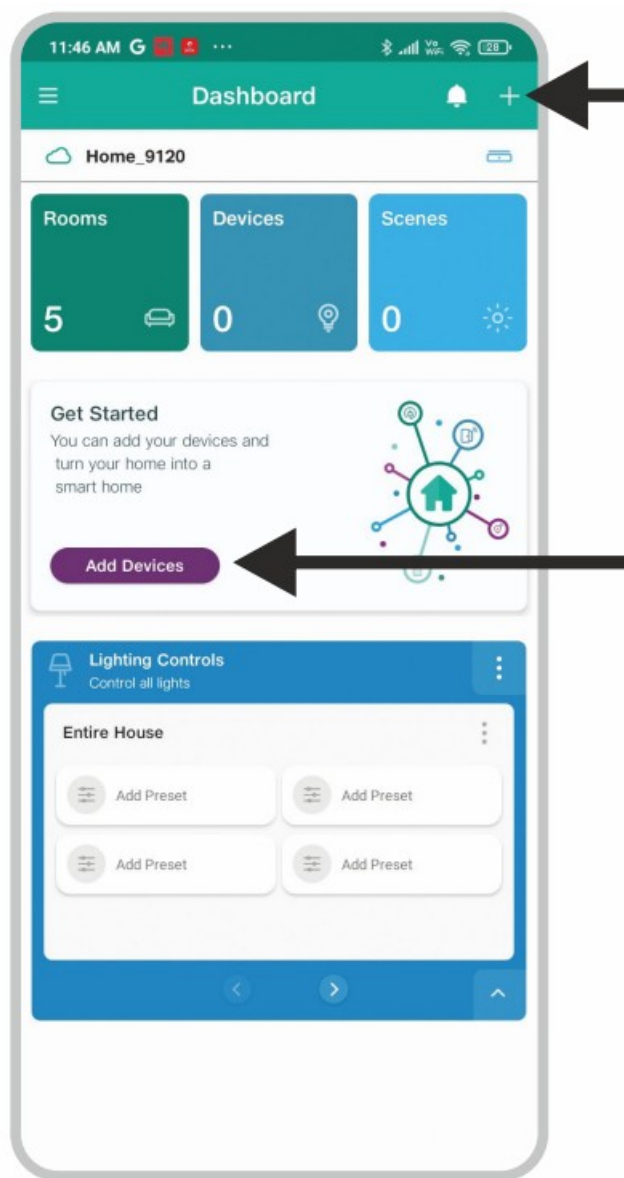
STEP 3 Add Device

3.1 Make Sure that Smart plug Indicator blinks quickly and then tap next step. If the indicator is not blinking quickly, then factory reset the device by turning the Push button OFF > ON 7 times. i.e. (7 On **Cycles**).

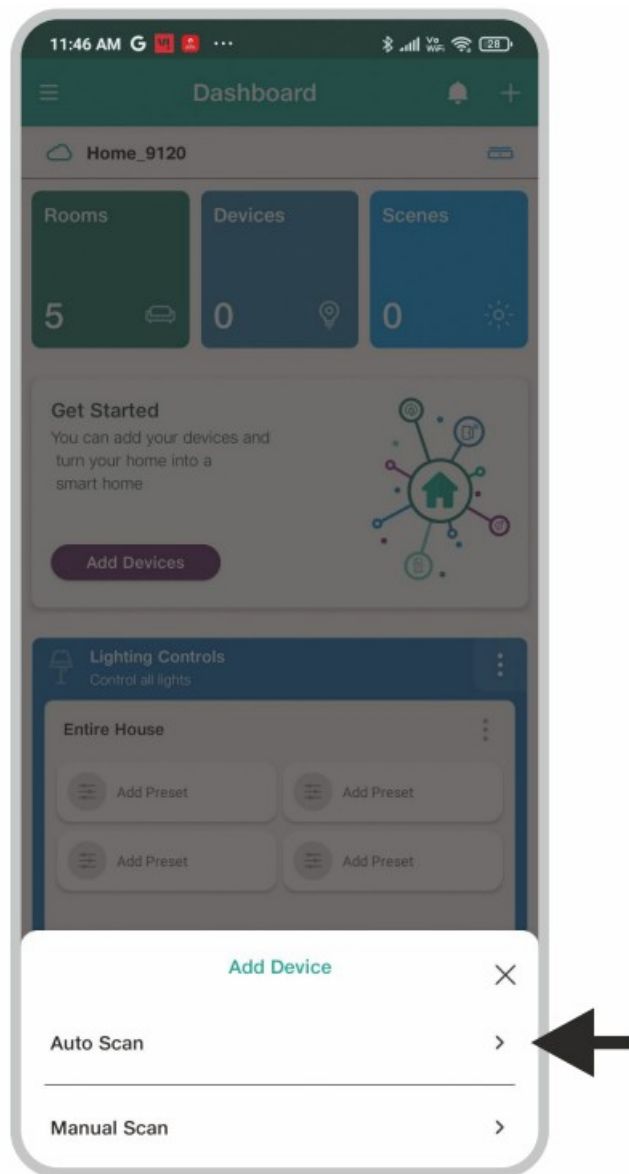


Caution: RISK OF ELECTRONIC SHOCK OR BURNS. USE IN DRY LOCATION ONLY. Do not use outdoors, with wet hands, or when standing on wet or damp surfaces.

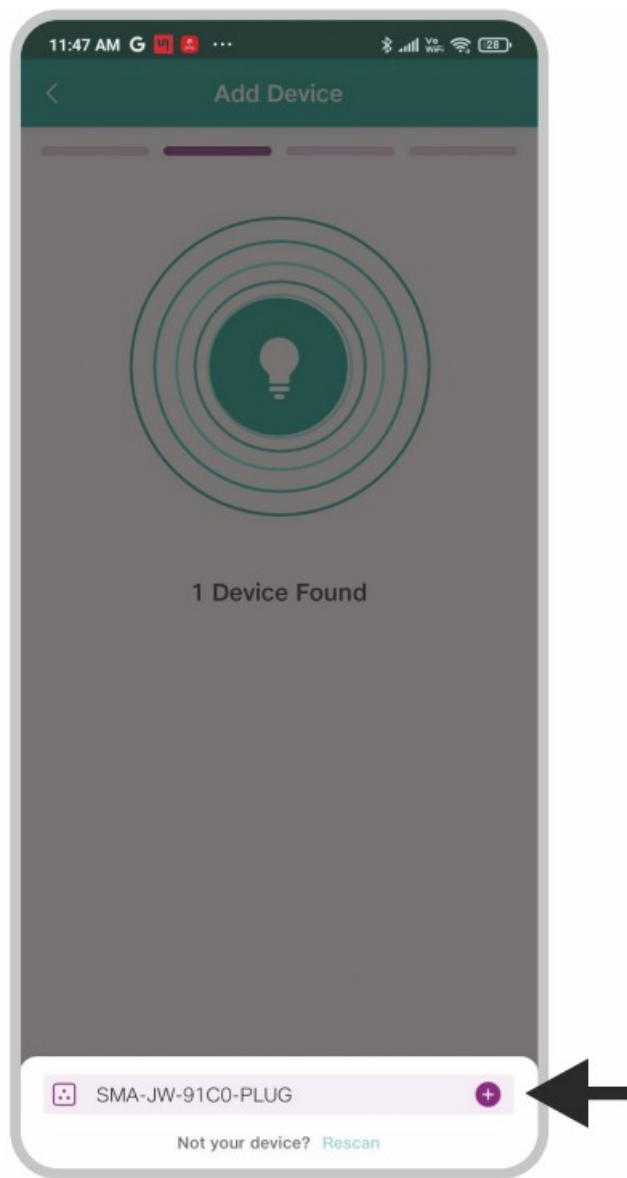
3.2 Tap '+' at the right corner or 'add device' button.



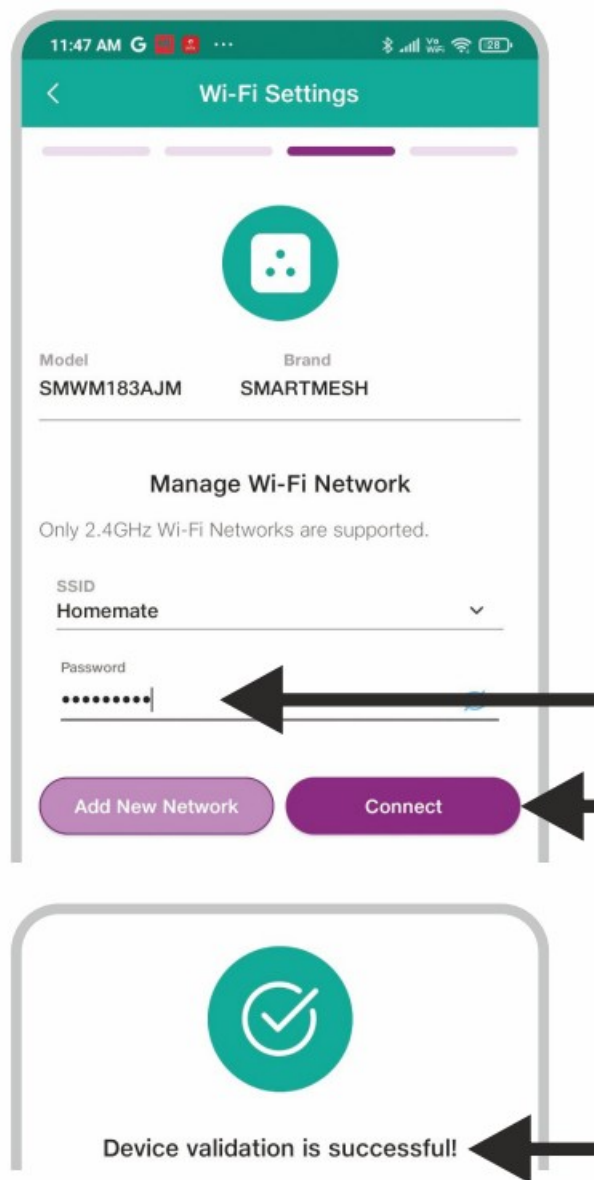
3.3 It will show two options:
Auto Scan and Manual Scan Select Auto Scan.



3.4 You will find new device (1 device found).
Tap on '+'.

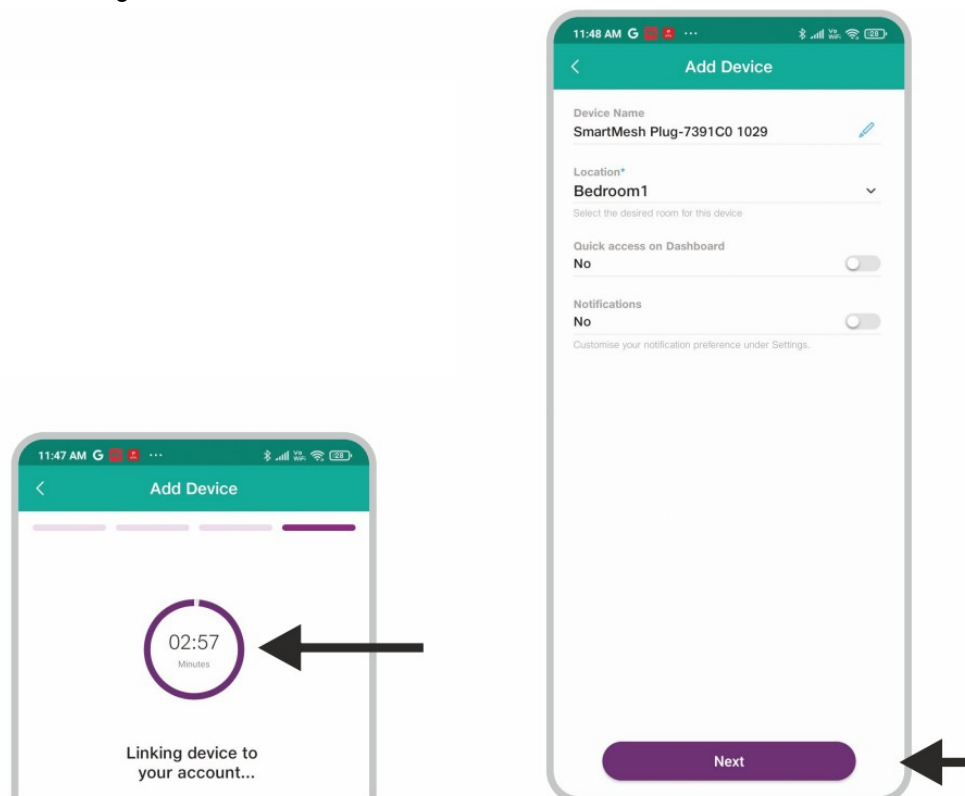


3.5 Enter Wi-Fi Password then tap on Connect.

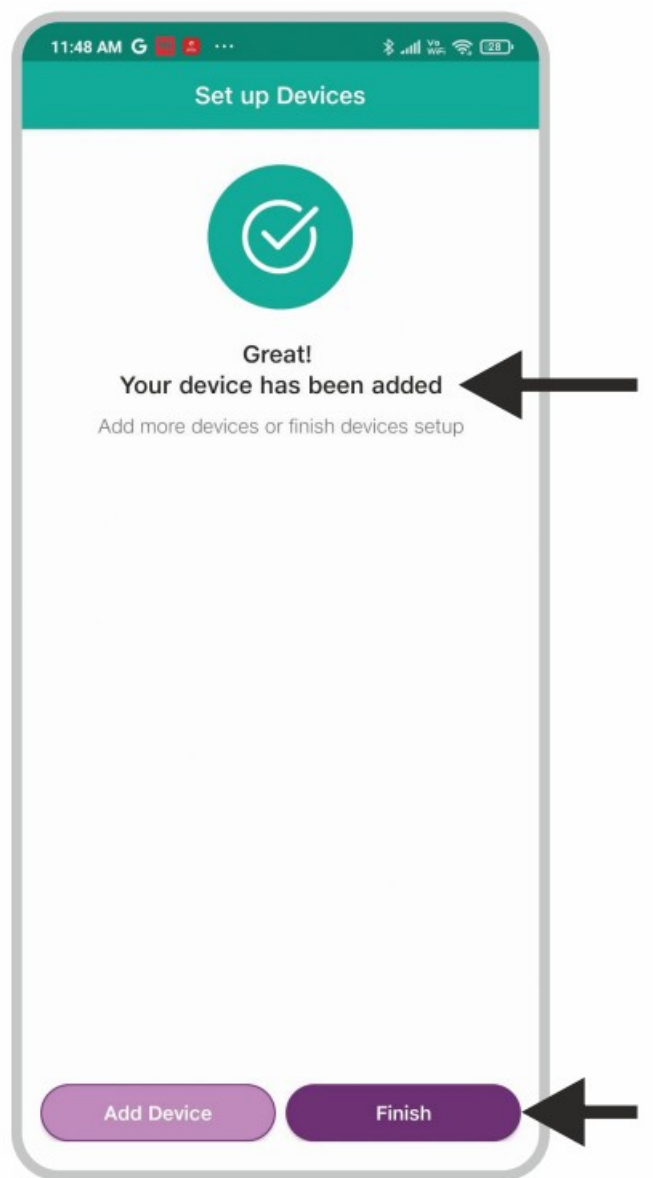


Device validation is successful!

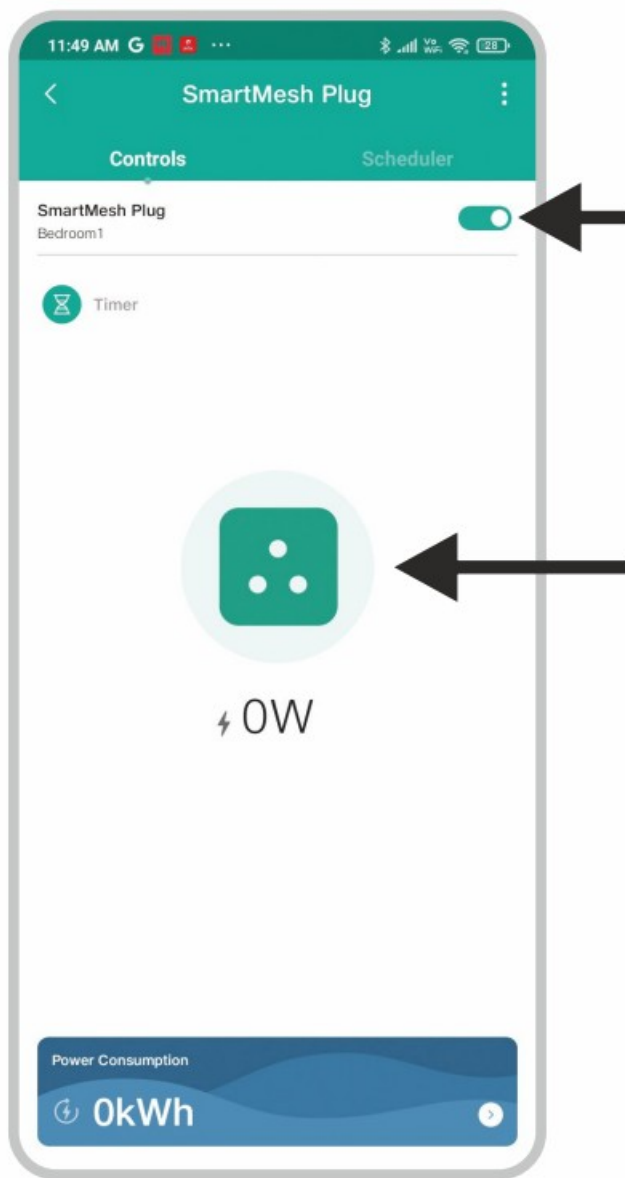
3.6 Time will start to linking device with account.



3.7 Device has been added successfully.



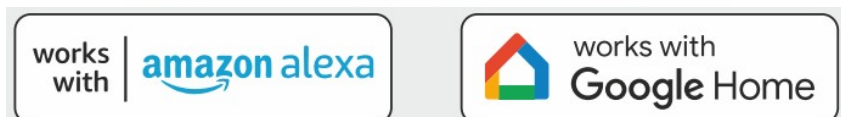
3.8 Now you can control and monitor energy consumption of your appliance from app.



Steps to link with voice assistant

1. Download the Alexa or Google Home App from play/iOS store.
2. Register/ Login the app and add voice assistant (if any).
3. Open SMARTMESH app, tap on Menu '☰' -> Tap on 'Voice Assistant'.
-> Select 'Amazon Alexa / Google Assistant' & tap on 'Connect' for app to app linking.

SMARTMESH





[SMARTMESH 10A Smart Plug Powered by Jio IoT with Energy Monitoring](#) [pdf] User Guide

10A Smart Plug Powered by Jio IoT with Energy Monitoring, 10A, Smart Plug Powered by Jio IoT with Energy Monitoring, Jio IoT with Energy Monitoring, Energy Monitoring, Monitoring

References

- [User Manual](#)

[Manuals+](#).