



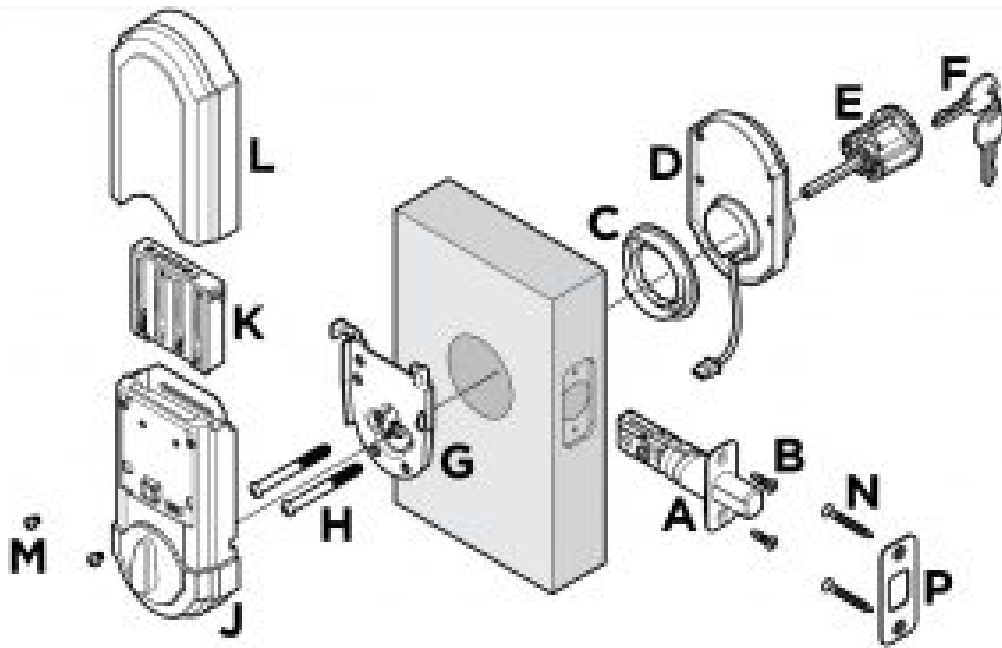
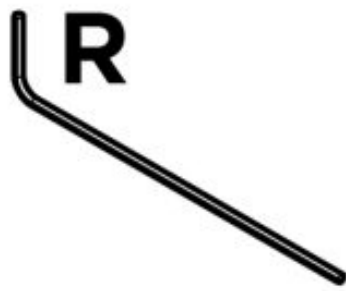
Smart Code Touchpad Electronic Deadbolt Quick Installation Guide

[Home](#) » [SmartCode](#) » Smart Code Touchpad Electronic Deadbolt Quick Installation Guide 

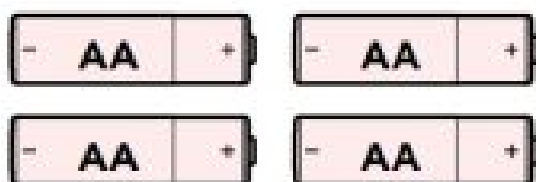
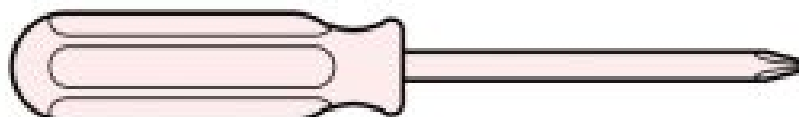
Smart Code Touchpad Electronic Deadbolt Quick Installation Guide
Models #49709 / 02 909



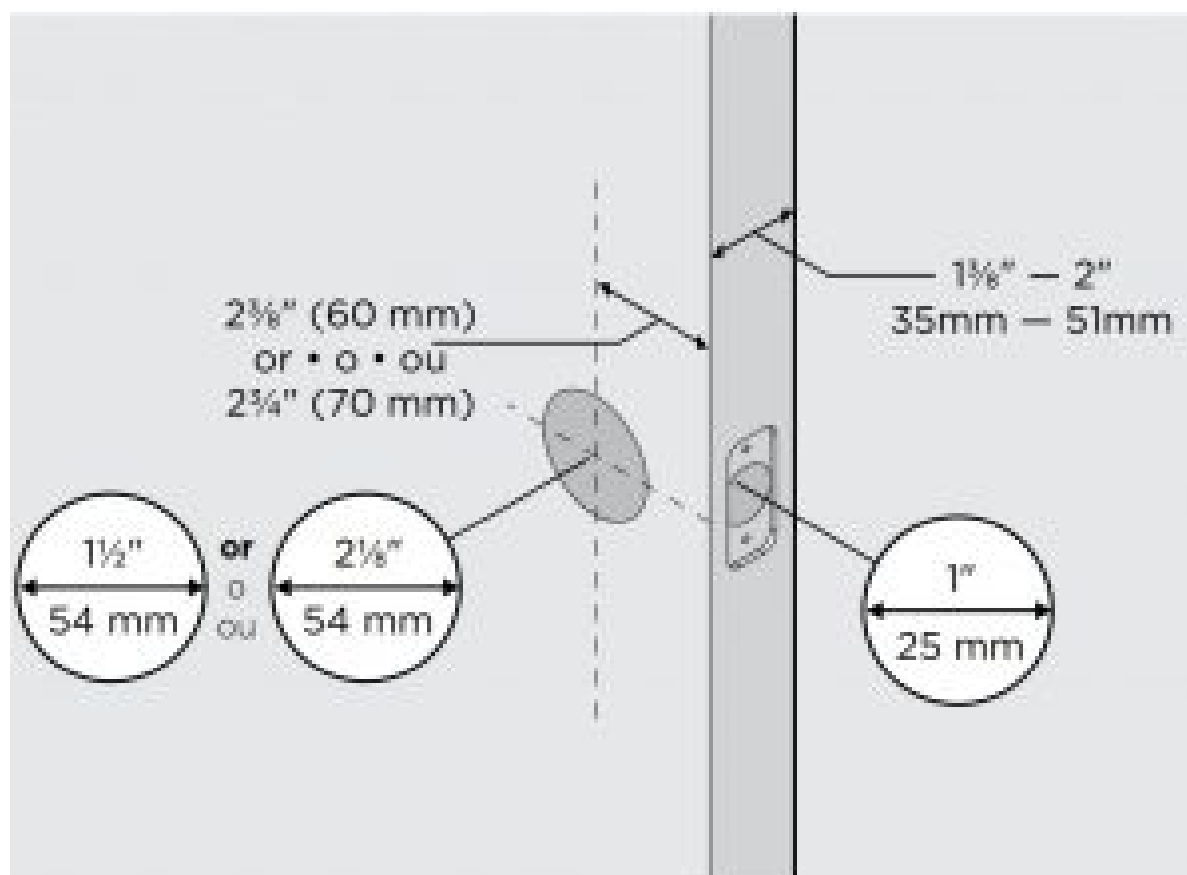
For select models only.

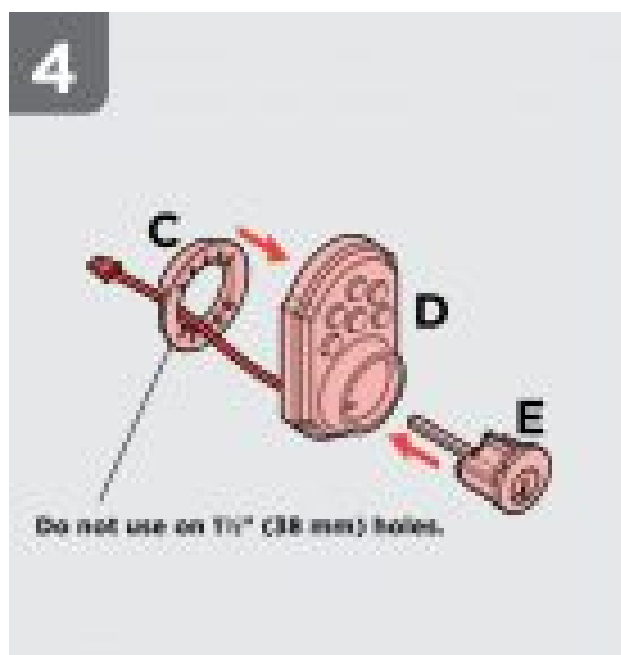
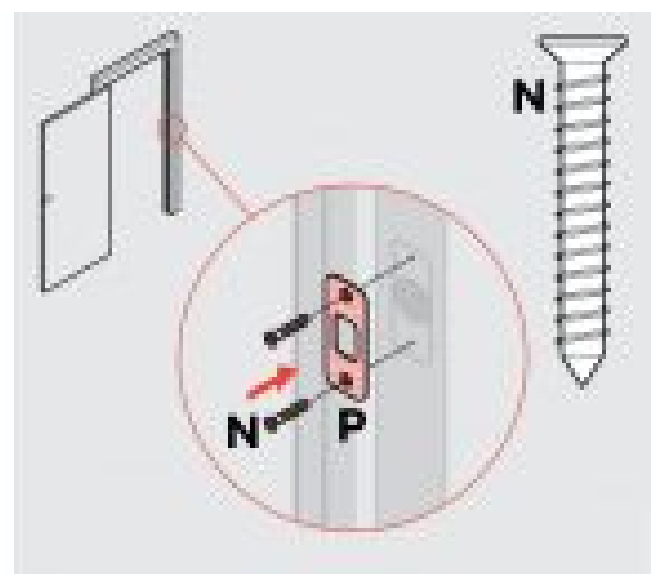
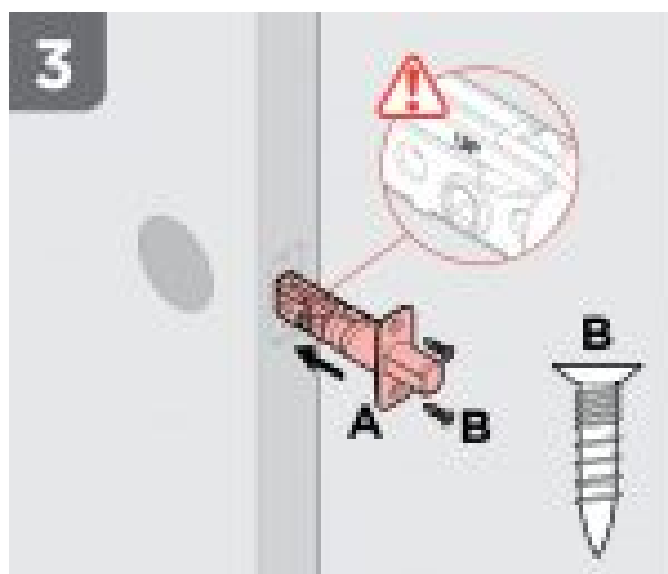
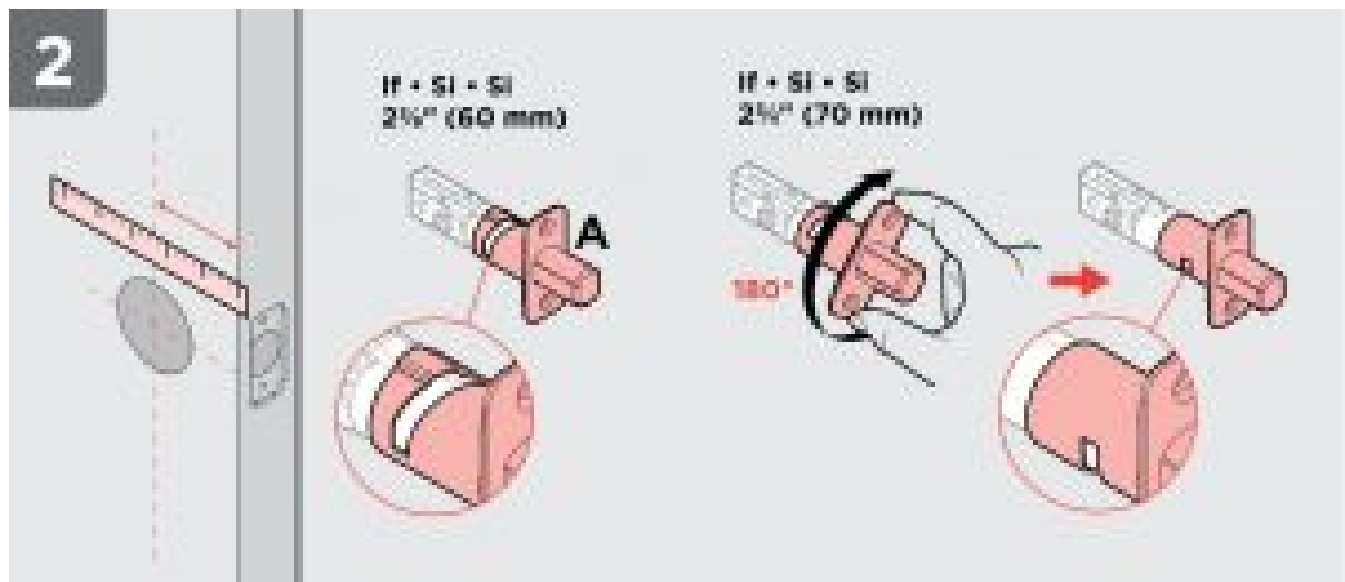


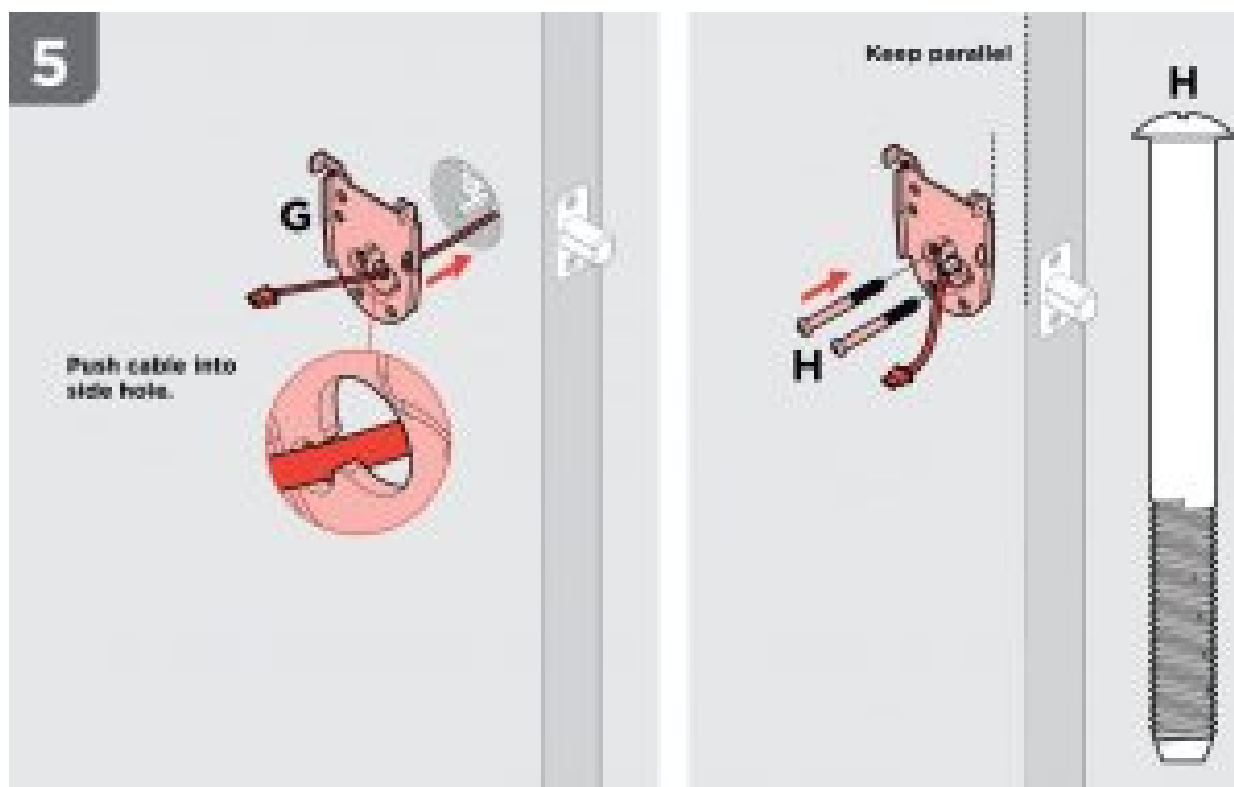
Tools Needed



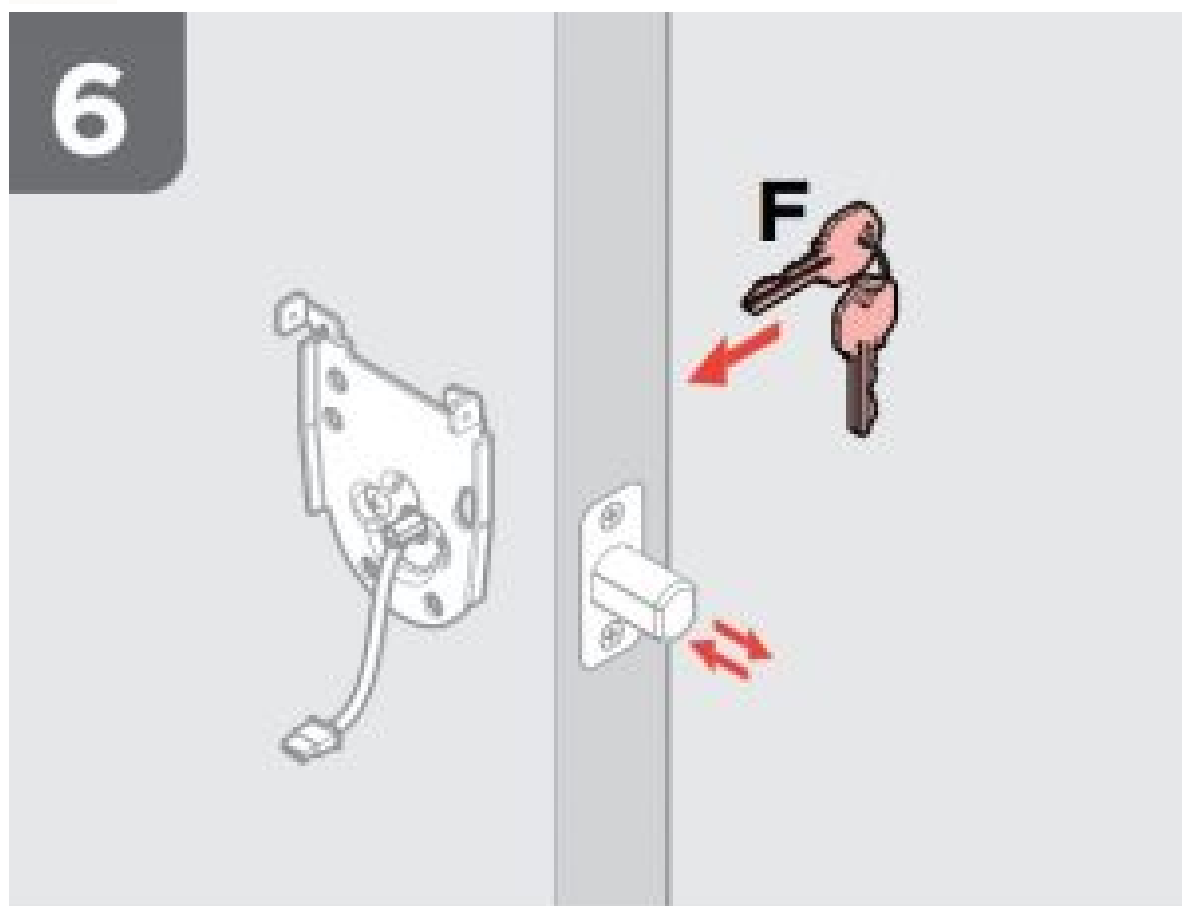
Check Dimensions





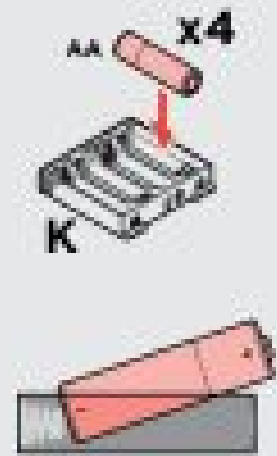


Do not use electric drill or electric screwdriver to tighten screws.

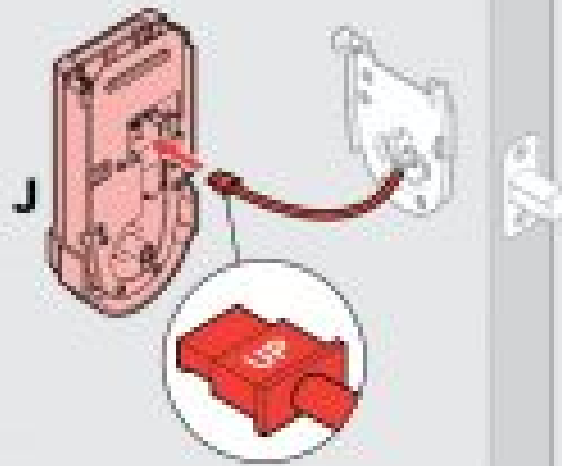


Insert key and test latch. If latch does not extend or retract smoothly, adjust screws (H). Remove key when finished.

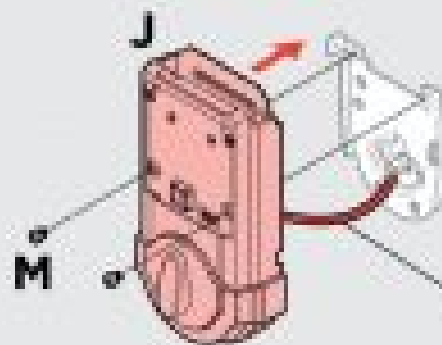
7



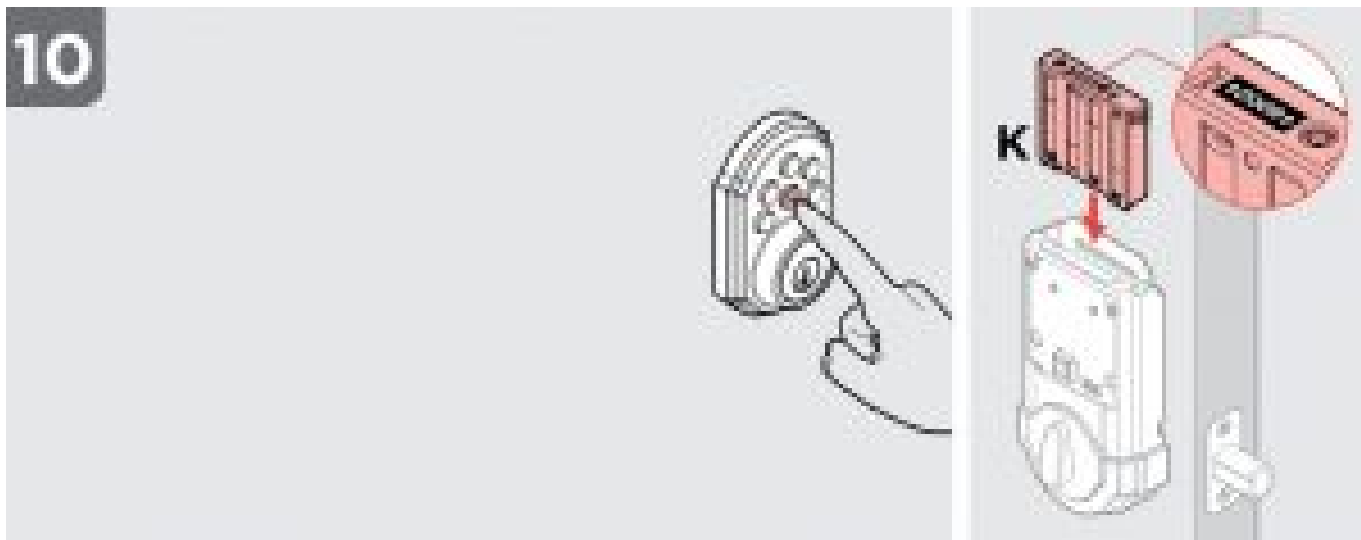
8



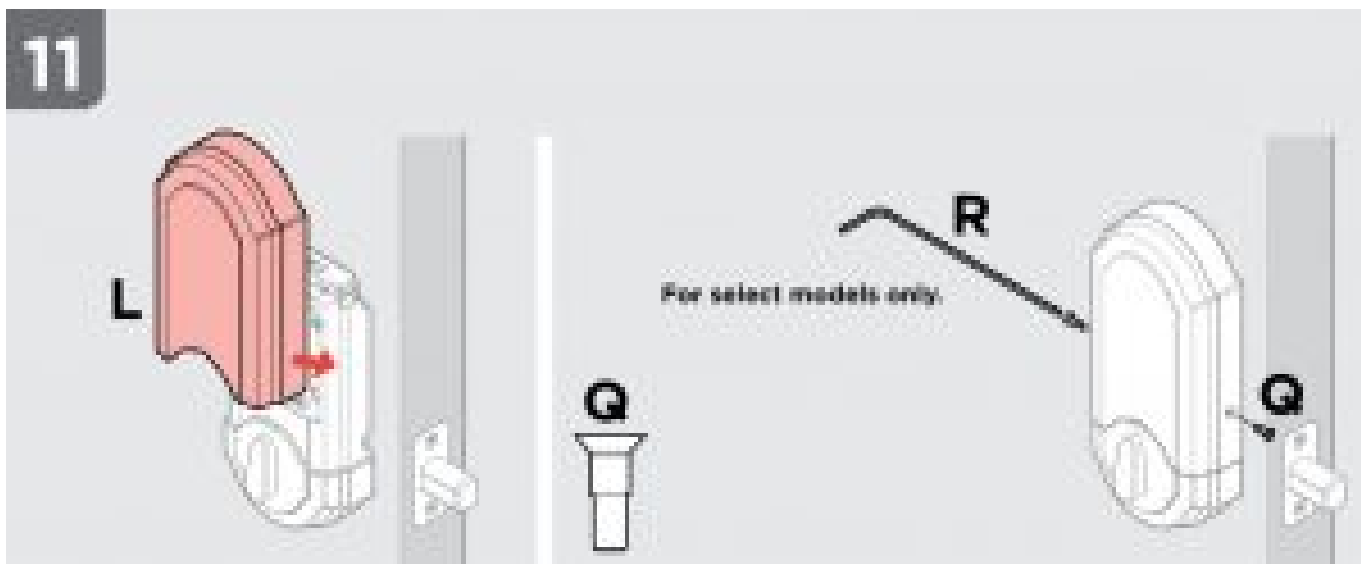
9



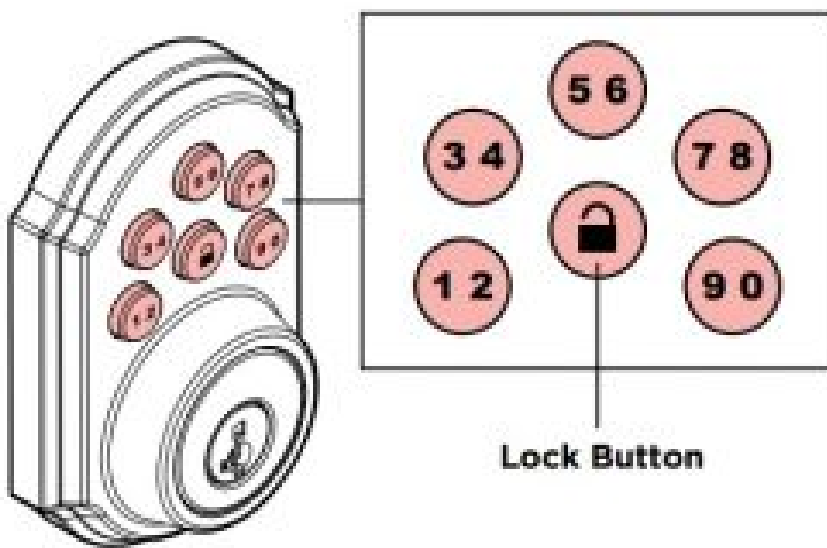
Push excess cable into interior housing (J).



(1) Hold LOCK button on keypad while (2) inserting the battery pack into the interior. The lock will extend & retract deadbolt latch. Two beeps will sound in approximately 30 seconds to confirm successful installation.

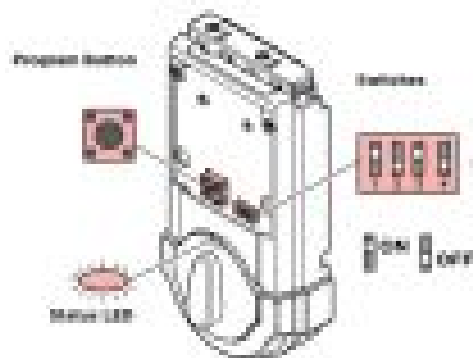


Keypad



Lock Button

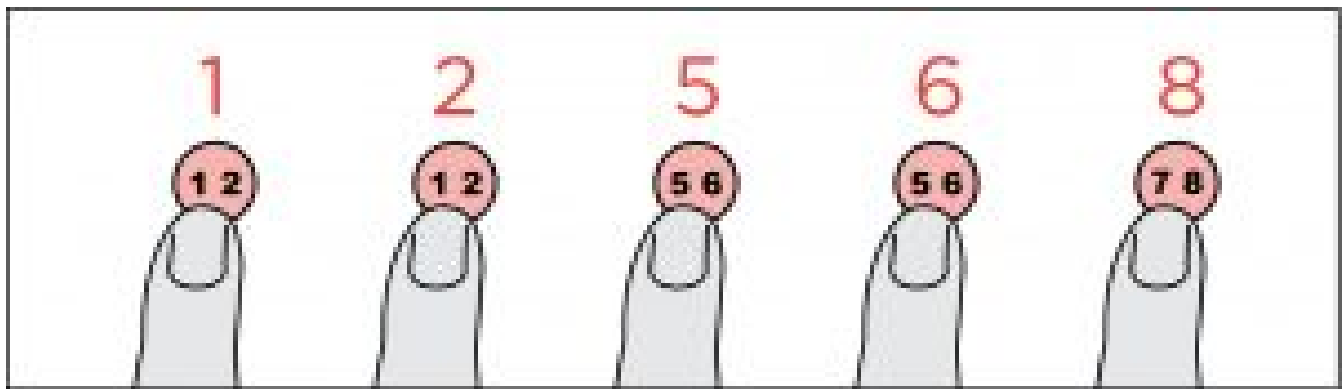
Program Button



1. Over lock status LED flashes every 8 seconds.
2. Auto Lock overrides door 90 seconds after unlocking. OFF position is factory default.
3. Beeping sound enabled. When disabled, keypad buttons light red or amber when pressed.
4. Polaris Feature (not used)

How the keypad works

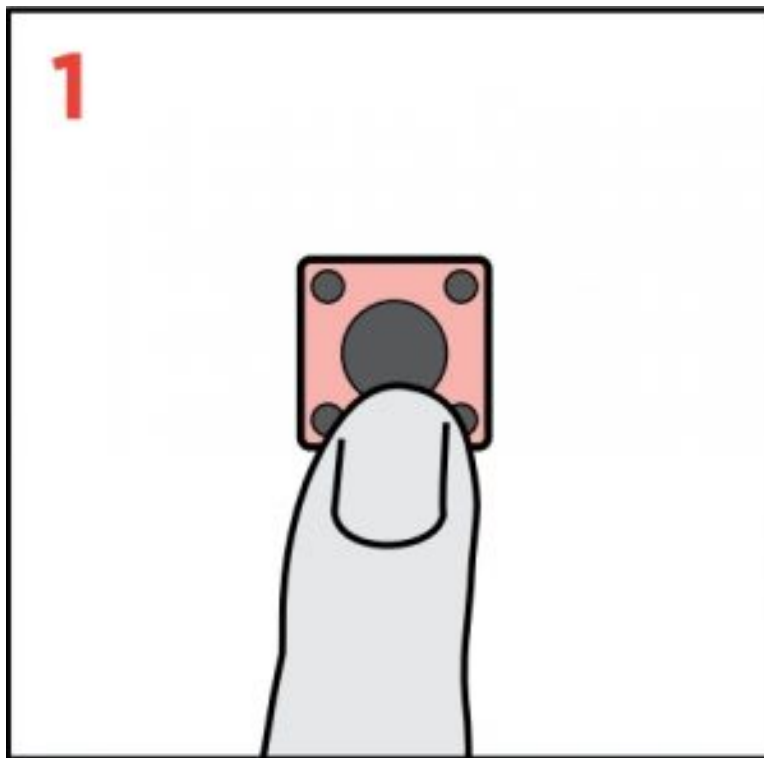
Each button represents two numbers (i.e. 1 and 2 for the first button). You only need to push the button once to get either 1 or 2. For example: If your code is 1-2-5-6-8,



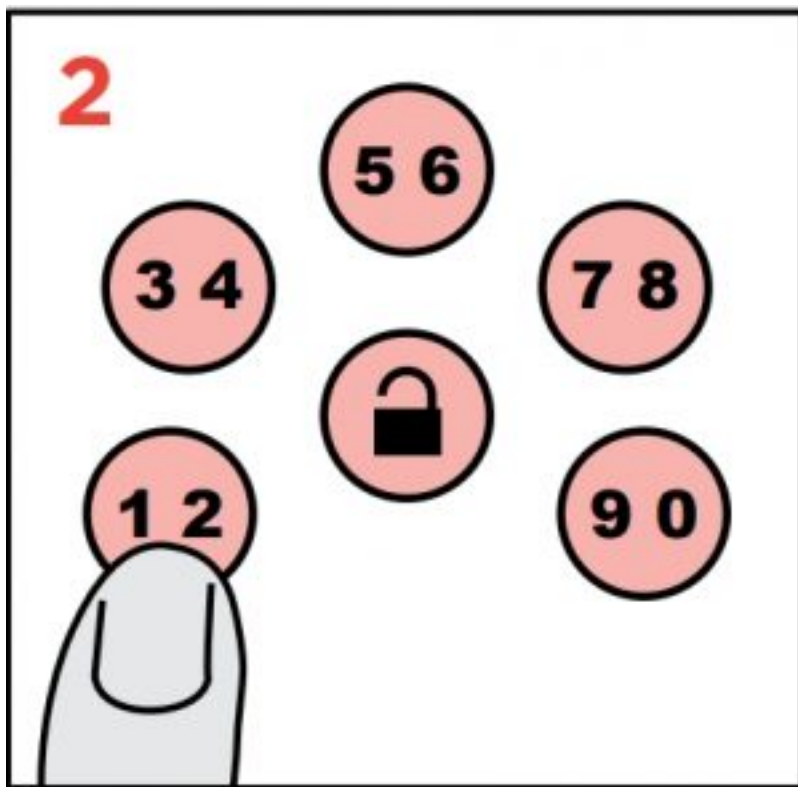
User Codes

Adding User Codes

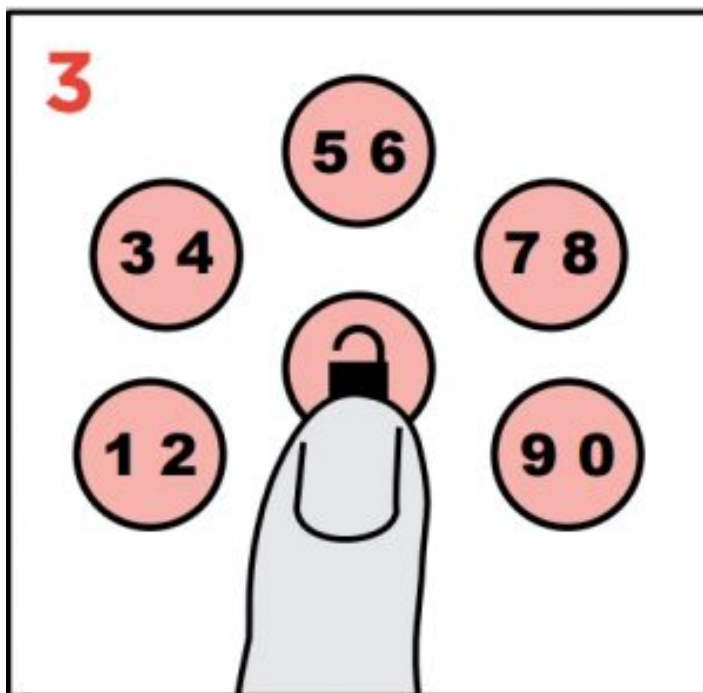
A total of 8 User Codes (UC) may be programmed.



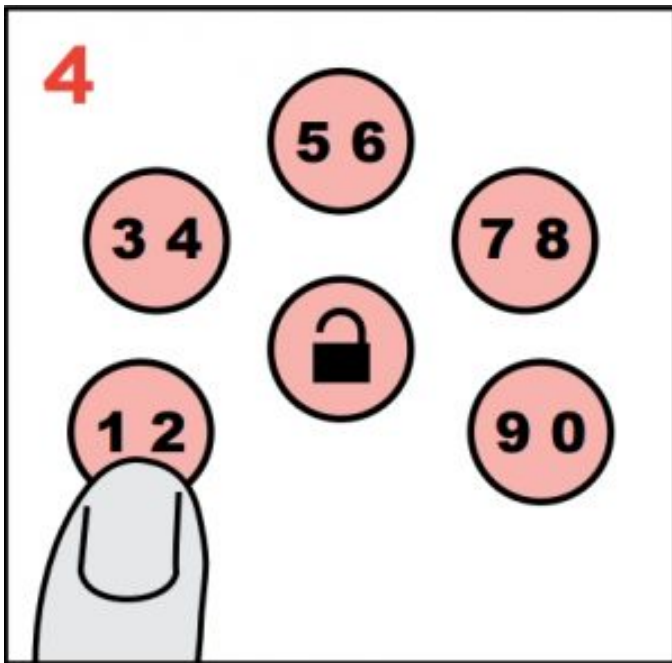
Press the Program Button the number of times that corresponds to the UC position being programmed.
Example: If programming the third code, press the button three times.



Enter 4 to 8 Digit Code



Press Lock Button



Test code. If the code does not work, repeat steps 1-3.

Note: During programming, if no button is pressed for 5 seconds, the system will time out, and you will need to restart the procedure.

Keep track of the person and code assigned to each UC position.

Deleting A Single User Code

In order to delete a single UC, you must override the code by programming a new code in the same position. Test the old code to make sure it is inactive.

CAUTION: Prevent unauthorized entry. Since anyone with access to the back panel can change the user codes, you must restrict access to the back panel and routinely check the user codes to ensure they have not been altered without your knowledge.

Contents

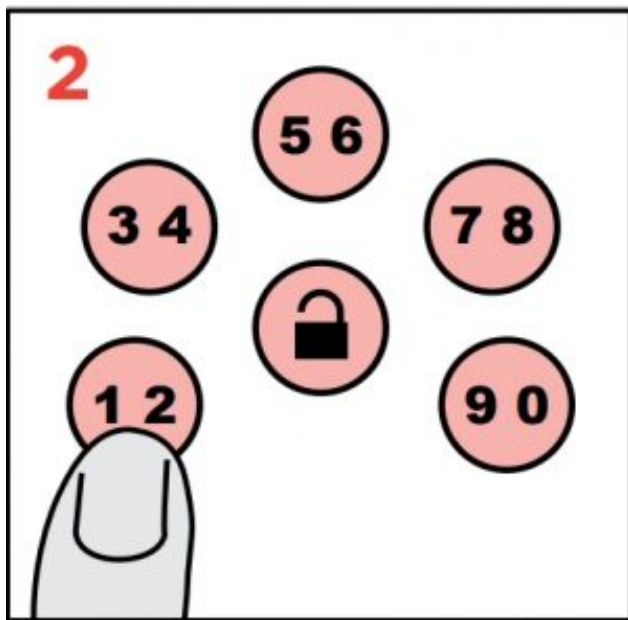
[1 Normal Operation](#)

[2 Keypad Warnings](#)

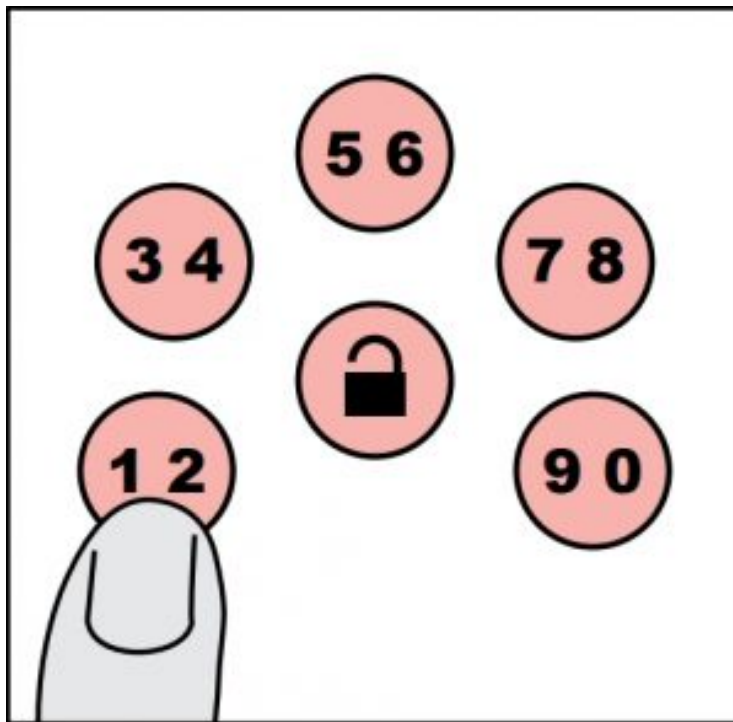
[3 Related Posts](#)

Normal Operation

Unlocking the door

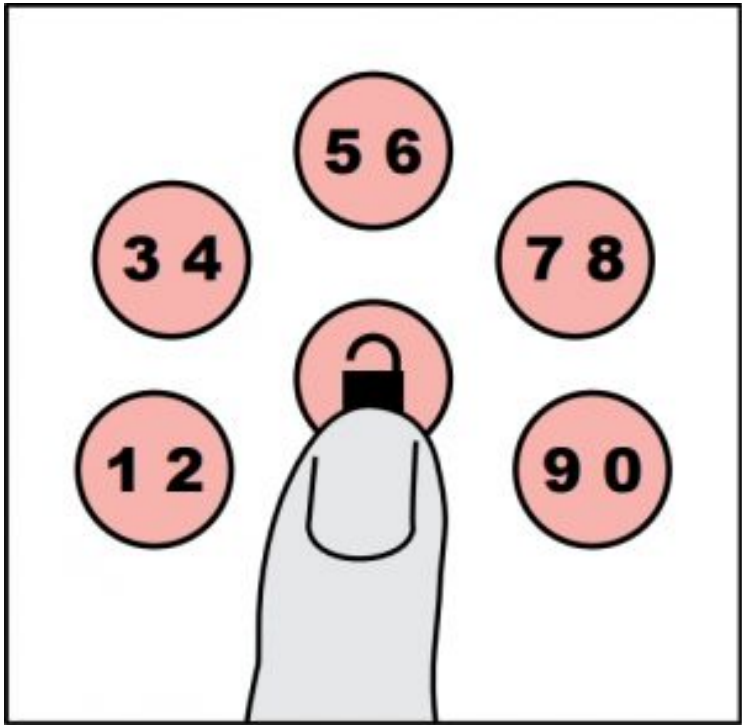


Optional: Press Lock Button to light up keypad at night.



Enter 4 to 8 Digit Code

Locking the door



Press Lock Button

If three incorrect codes are entered consecutively, the keypad will lockout for 60 seconds, after which you may try the code again.

Keypad Warnings

Warning Advertencia Avertissement	Reason Razón Raison pour	Solution Solución Solution
Keypad flashes red with fast beeping sound (If switch #3 is on) El teclado numérico proyecta una luz roja con un pitido rápido (en caso de que el interruptor N° 3 se encuentre encendido) Le clavier clignote en rouge avec un signal sonore rapide (si le bouton #3 est sur ON)	Low battery Batería baja Batterie faible	Replace battery Reemplazar la batería Remplacer la batterie
	Door not locked Puerta no cerrada Porte non verrouillée	Relock door Cierre la puerta de nuevo Verrouiller la porte à nouveau
Keypad flashes red with slow beeping sound (If switch #3 is on) El teclado numérico proyecta una luz roja con un pitido lento (en caso de que el interruptor N° 3 se encuentre encendido) Le clavier clignote en rouge avec un signal sonore lent (si le bouton #3 est sur ON)	Incorrect codes entered Se ingresaron códigos incorrectos Codes entrés incorrects	Re-enter code after 60 second keypad lockout Reingresar el código después de 60 segundos de bloqueo del teclado Entrer le code de nouveau au bout de 60 secondes de verrouillage du clavier

Status LED Color

Status LED Color: **Lock Status:**

blinking green: **Unlocked:**

blinking amber: **Locked:**

blinking red: **Low Battery:**

Will still blink red for low battery when switch # 1 is of:



WARNING: This Manufacturer advises that no lock can provide complete security by itself. This lock may be defeated by forcible or technical means, or evaded by entry elsewhere on the property. No lock can substitute for caution, awareness of your environment, and common sense. Builder's hardware is available in multiple performance grades to suit the application. In order to enhance security and reduce risk, you should consult a qualified locksmith or other security professional.

For assistance or warranty information:

Kwikset product

1-800-327-5625, **USA & CANADA**

or visit www.kwikset.com

Weiser product

USA: 1-800-327-5625

CANADA: 1-800-501-9471

or visit www.weiserlock.com

Smart Code Touchpad Electronic Deadbolt Quick Installation Guide – [Download \[optimized\]](#)

Smart Code Touchpad Electronic Deadbolt Quick Installation Guide – [Download](#)