




smartcell SC-51-0100-0001-99 Fire Manual Call Point Installation Guide

[Home](#) » [smartcell](#) » smartcell SC-51-0100-0001-99 Fire Manual Call Point Installation Guide 

Contents

- [1 smartcell SC-51-0100-0001-99 Fire Manual Call Point](#)
- [2 Pre-installation](#)
- [3 Components](#)
- [4 Remove mounting plate](#)
- [5 Fix mounting plate](#)
- [6 Fit batteries](#)
- [7 Configuration](#)
- [8 Completing the installation](#)
- [9 Optional breakable tag fitting](#)
- [10 Device unlocking](#)
- [11 Specification](#)
- [12 Regulatory information](#)
- [13 Documents / Resources](#)
 - [13.1 References](#)
- [14 Related Posts](#)

SmartCell

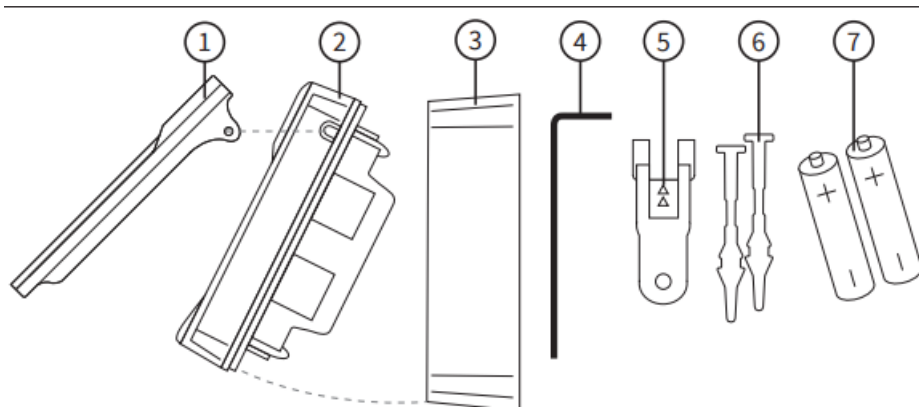
smartcell SC-51-0100-0001-99 Fire Manual Call Point



Pre-installation

- Installation must conform to applicable local installation codes and should only be installed by a fully trained competent person.
- This device contains electronics that may be susceptible to damage from Electrostatic Discharge (ESD). Take appropriate precautions when handling electronic boards.
- The use of a non-metallic spacer should be considered if mounting the device on to a metal surface.
- Fit the breakable tag after installation and testing of the device.
- To ensure correct operation, products must be used within the specified environmental operating conditions.

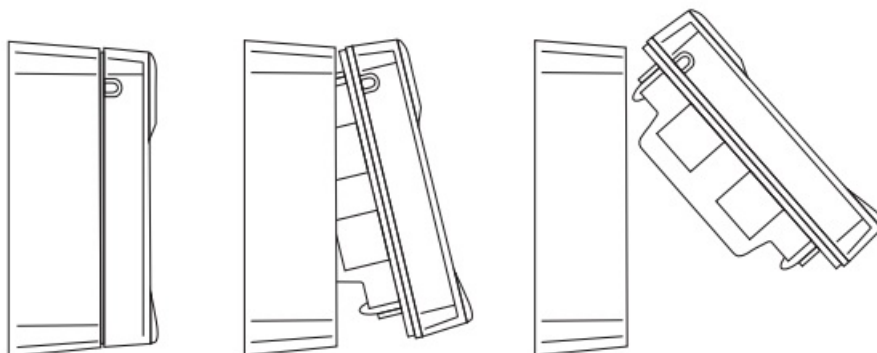
Components



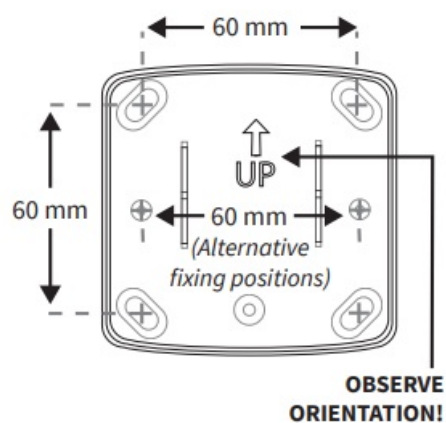
1. Transparent cover
2. Fire manual call point
3. Mounting plate
4. Allen key
5. Reset key
6. Breakable tags Batteries
7. (Not included in some regions*)

Remove mounting plate

- Carefully unclip the two sections, observing the hinged connection at the top of the device.



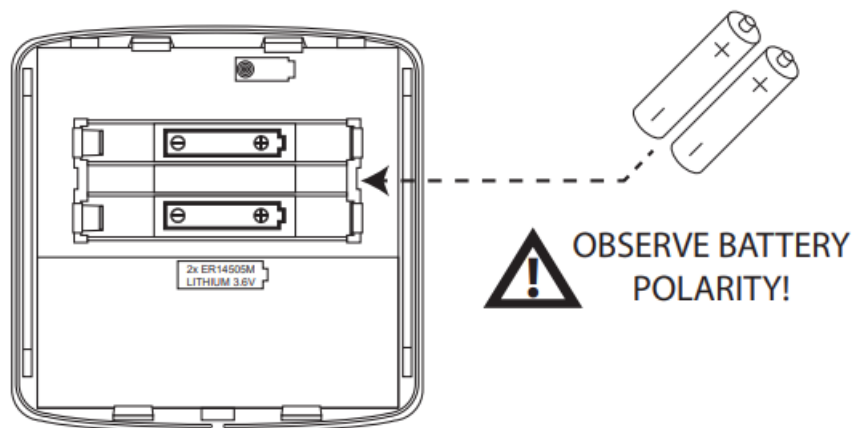
Fix mounting plate



- When fixing to the wall, all four fixing positions must be used to ensure a firm fixing.
- 2x alternative fixing positions are also available for fixing to existing electrical mounting boxes.
- Observe the orientation marking as shown.
- Use suitable fasteners and fixings.

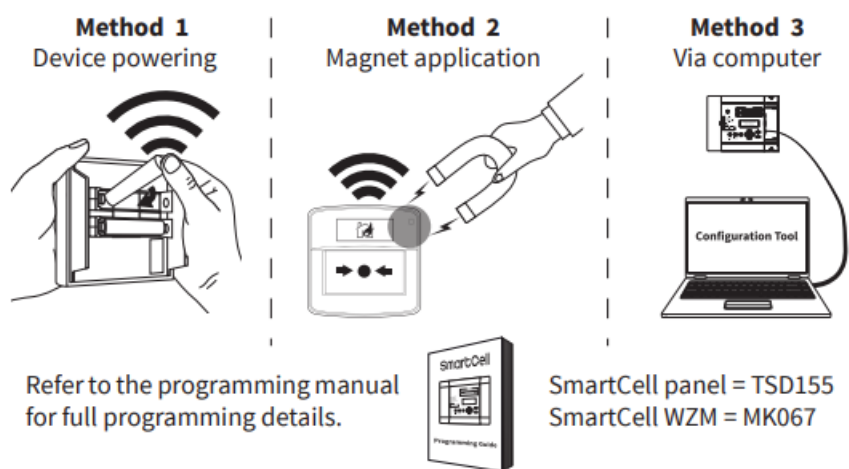
Fit batteries

- When fitting / replacing batteries, observe correct polarity, using only specified batteries.



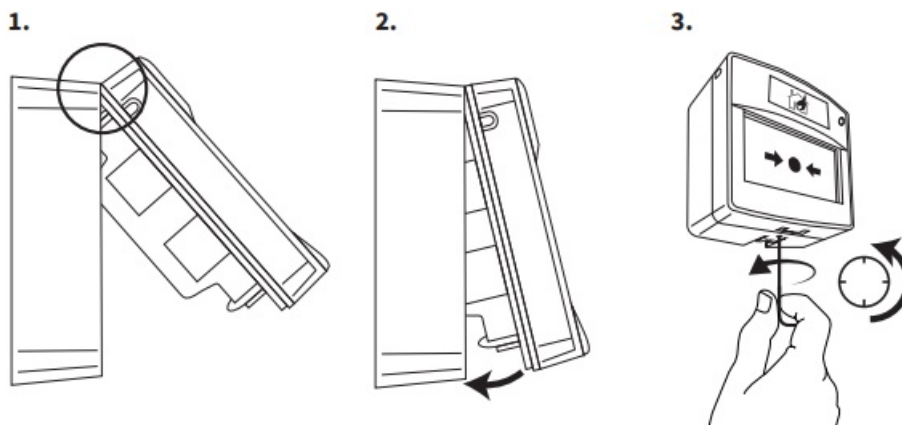
Configuration

The device must now be added (programmed) to the control panel.



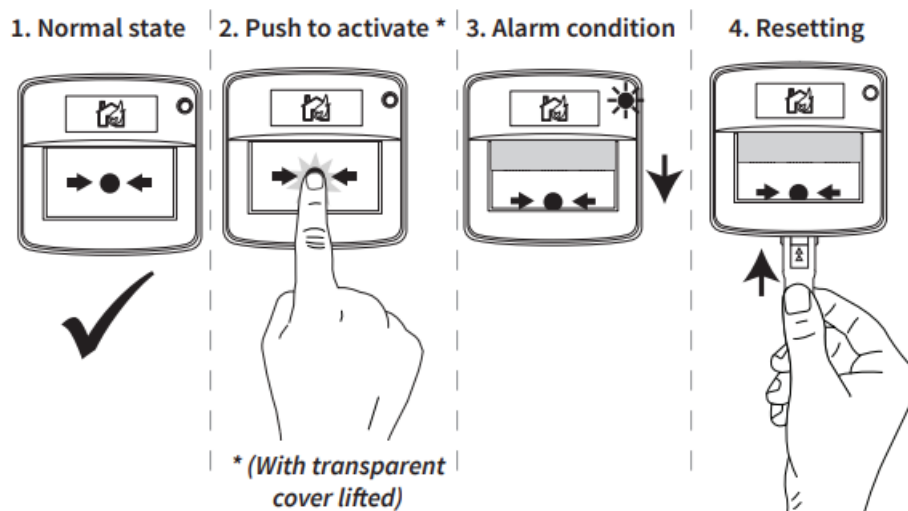
Completing the installation

- Reassemble the unit, observing the hinged connection as shown.
- Lock the device, by turning the Allen key ANTI-CLOCKWISE, until the screw is flush with the casework.



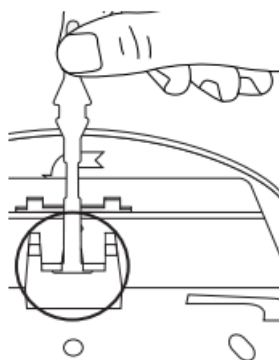
Testing and resetting

Test once added (programmed) to the system.

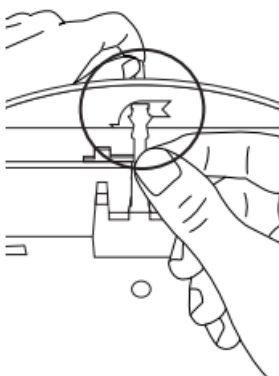


Optional breakable tag fitting

1. Locate the end of the tag under the retaining clip as shown.



2. Pull the tag through the cavity, until the tag is secure.

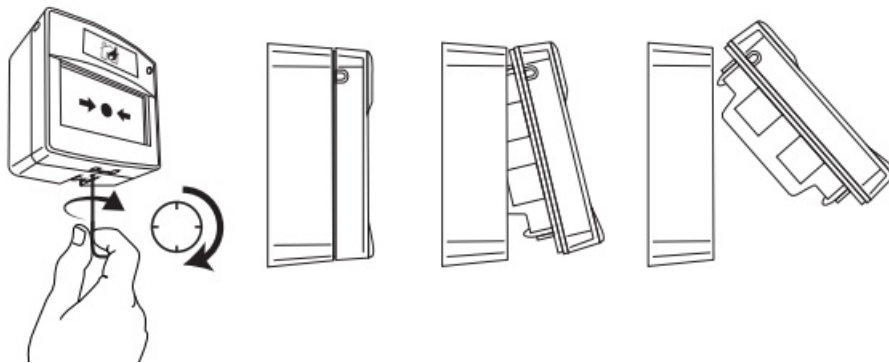


3. Carefully remove excess using cutters.



Device unlocking

- If the device is locked, turn the Allen key **CLOCKWISE** to release the locking mechanism.
- Once unlocked, carefully unclip the two sections.



Specification

- **Operating temperature** -10 to +55 °C
- **Storage temperature :**
 - **With batteries** -10 to +30 °C
 - **Without batteries** -10 to +55 °C
- **Humidity** 0 to 95% non-condensing
- **Location** Type A: for indoor use
- **Supply** 2 x ER14505M 3.6 V lithium thionyl chloride batteries (Fanso or Titus)
- **Operating voltage** 2.7 to 3.65 VDC
- **Operating frequency** 868MHz
- **Output transmitter power** 14 dBm / 25 mW
- **Signalling protocol** X5
- **Dimensions (W x H x D)** 92 x 97 x 47 mm

CAUTION!

- This is a life-safety product. Only use manufacturer-approved battery types. Failure to do so may result in damage to the product.
- DO NOT mix batteries of different type or age.
- When replacing batteries; remove all old batteries before fitting replacements.

Regulatory information

- Manufacturer Carrier Manufacturing Polska Sp. Z o.o. Ul. Kolejowa 24. 39-100 Ropczyce, Poland
- Year of manufacture See device serial number label
- Certification
- Certification body
- CPR DoP 0359-CPR-00266

Approved to

- **EN54-11:2001.** Incorporating amendment no. 1 and corrigendum no. 1. Fire detection and fire alarm systems. Part 11: manual call points.
- **EN54-13:2005.** Fire detection and fire alarm systems. Part 13: Compatibility assessment of system components.
- **EN54-25:2008.** Incorporating corrigenda September 2010 and march 2012. Fire detection and fire alarm systems. Part 25: components using radio links.

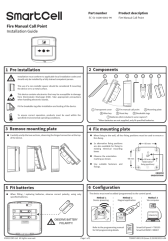
European Union directives

EMS declares that the radio equipment type SmartCell Fire Manual Call Point is in compliance with Directive 2014/53/EU. The full text of the EU declaration of conformity is available at the following internet address:
www.mysmartcell.com

2012/19/EC (WEEE directive): Products marked with this symbol cannot be disposed of as unsorted municipal waste in the European Union. For proper recycling, return this product to your local supplier upon purchase of equivalent new equipment, or dispose of it at designated collection points. For more information see www.recyclethis.info Dispose of your batteries in an environmentally friendly manner according to your local regulations.

©2021 EMS Ltd. All rights reserved. TSD087-0001-99 (Issue 3) 25/08/2021 AJM

Documents / Resources

	<p>smartcell SC-51-0100-0001-99 Fire Manual Call Point [pdf] Installation Guide SC-51-0100-0001-99 Fire Manual Call Point, SC-51-0100-0001-99, Fire Manual Call Point, Call Point, Point</p>
---	---

References

-  [My SmartCell | A New Innovation In Wireless Fire Detection](#)
-  [HOME](#)