



Smart710 Tech Note Instruction Manual

[Home](#) » [Smart](#) » Smart710 Tech Note Instruction Manual 

Smart710 Tech Note



Contents

- [1 Introduction](#)
- [2 Highlights](#)
- [3 JSmart710 – Technical Data](#)
- [4 Dimension](#)
- [5 Ordering Information](#)
- [6 Customers Support](#)
- [7 Documents / Resources](#)
 - [7.1 References](#)
- [8 Related Posts](#)

Introduction

- Full IP protection; ideal for mounting-arm installation
- Includes environment and motion sensors
- 10.1" TFT color display, resolution 1280×800 pixel, 16M colors, dimmable backlight
- PCAP Touchscreen Multitouch
- 10/100 Ethernet port PoE
- Wi-Fi Connection

Highlights

JSmart 710 is the ideal product for field installation in critical areas. High-resolution 10.1" display with multitouch

PCAP touchscreen with a robust glass front; touchscreen/display bonding for fidget optical performance.

Power-over-Ethernet (PoE) for maximum simplicity of connection using standard CAT5 wiring.

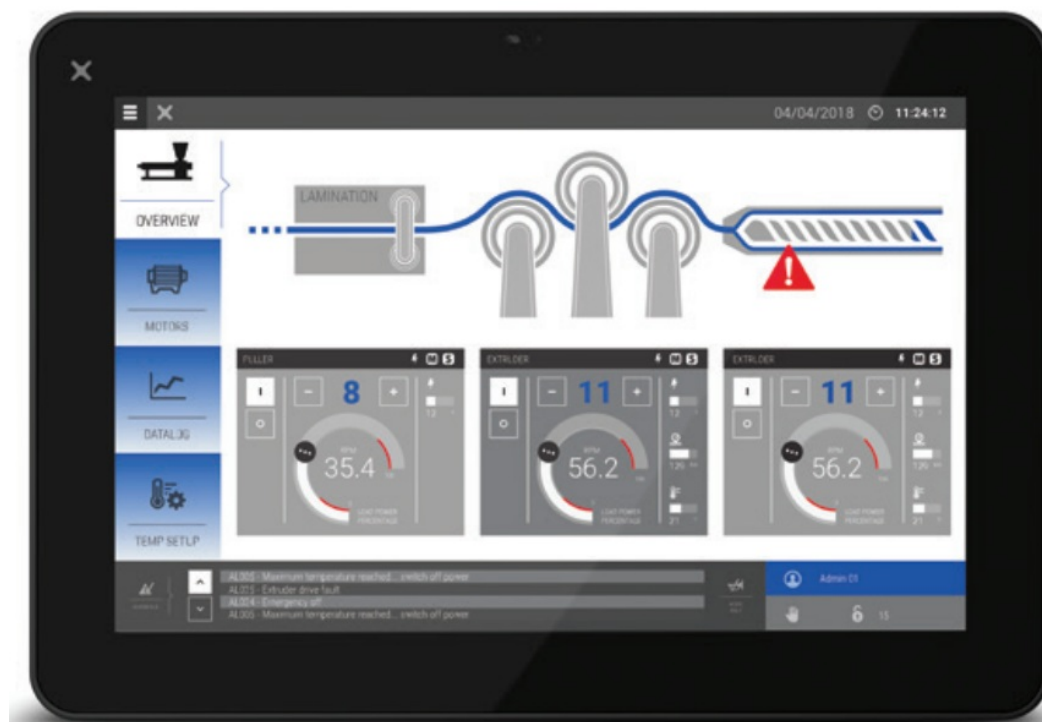
The availability of a Wi-Fi interface enhances the device integration.

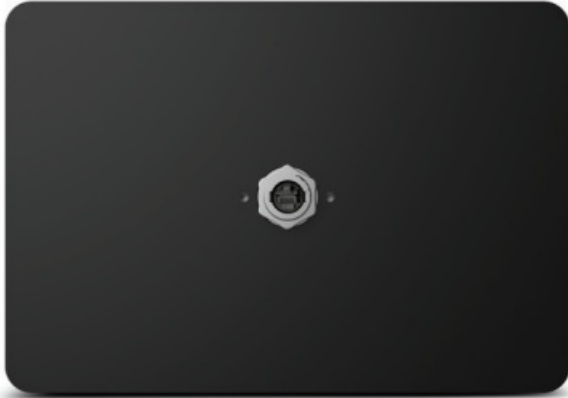
Full IP protection with the use of dedicated connectors for the maximum flexibility of installation, from mounting arm to a simple M22 hole. The product includes a full set of environment and motion sensors to make this device a true IIoT edge device for Industry 4.0 applications.

The JSmart product family has been optimized for use as an embedded browser or as a JMobile HMI device.

- Performing HTML5-compatible browser with graphic accelerator
- JMobile runtime with OPC UA Server and Client
- Optional CODESYS V3 PLC for integrated HMI and control applications
- Open platform for Linux applications
- Built-in sensors (temperature and acceleration)

JSmart710 – Technical Data

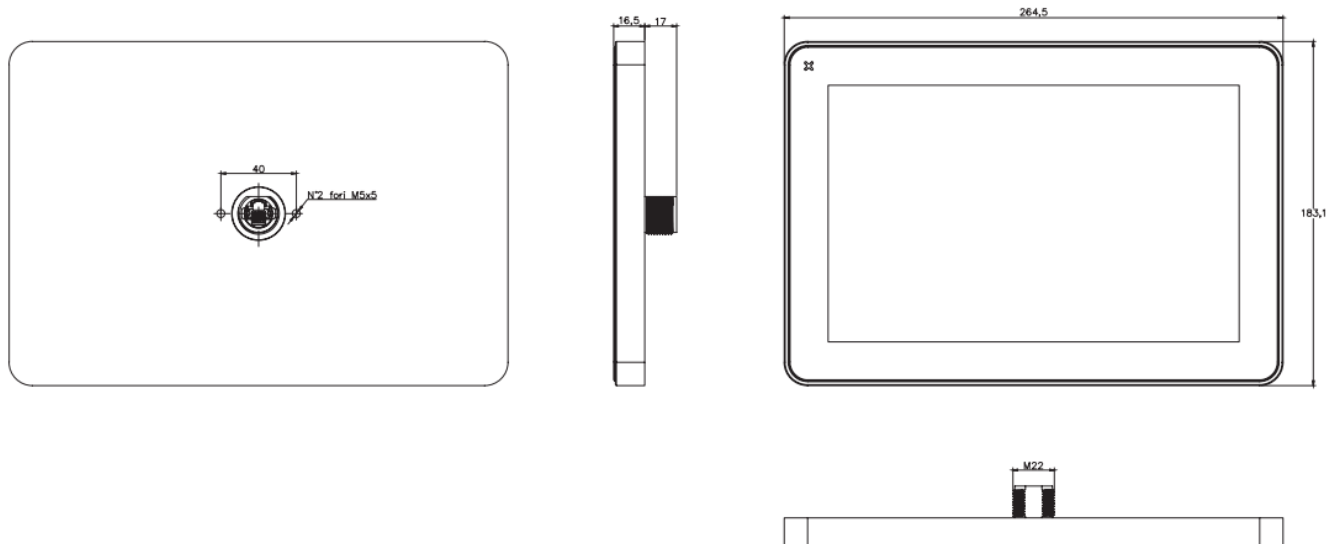




System Resources	
Display – Colors	10.1” TFT – 16M
Resolution	1280×800
Brightness	400 cd/m2 typ.
Dimming	to 0%
Touchscreen	Projected Capacitive – Multitouch
CPU	32-bit RISC dual core – 800 MHz
Operating system	Linux RT
Flash	4 GB
RAM	1 GB
FRAM	64 KB
RTClock, RTC Back-up	Yes
Interface	
Ethernet port	10/100 PoE

USB port	1 (Host V2.0, max. 50 mA, available with special cable)
LED	1 RGB
Sensors	Temperature, 3-Axis Accelerometer
Wi-Fi	IEEE 802.11a/b/g
Buzzer	Yes
Ratings	
Power supply	IEEE 802.3af PoE
Power Consumption	12 W
Battery	Yes (rechargeable)
Environment Conditions	
Operating Temp	-20° to +55° C (vertical installation)
Storage Temp	-30°C to +80°C
Operating / Storage Humidity	5-85% RH, non-condensing
Protection Class	IP67 (requires appropriate accessories and cables) – Type: 1, 12, 4x
Dimensions and Weights	
Faceplate LxH	264.5×183.1 mm (10.41×7.20")
Depth D+T+T	16.5 mm (0.06")
Weight	1.2 Kg
Approvals	
CE	Radio Equipment Directive 2014/53/EU (RED)
UL	cULus: UL61010-1 / UL61010-2-201
UL	cULus: Class 1 Div 2
DNV-GL	Yes
RCM	Yes

Dimension



Ordering Information

Model	Part Number	Description
JSmart710	+JS710BC1U5 P1	HMI 10" TFT, 1280×800, PCAP Touch, 4GB Flash memory, PoE Ethernet + Wi-Fi , JMobile runtime

Customers Support

ptn0611 – Ver. 1.6
© 2019 EXOR International S.p.A. All rights reserved

exorint.com

Logo

Documents / Resources

	SMART Smart710 Tech Note [pdf] Instruction Manual Smart710 Tech Note, Smart710 Tech Note, Tech Note, Note
--	--

References

- EXOR [EXOR International | Industrial Automation](#)