

# SMART

## SMART2110

### SMART WI-FI MODULE KIT FOR SHUTTERS



### User Guide

#### Contents [ [hide](#) ]

- [1 SMART2110 Smart Wi-Fi Module Kit For Shutters](#)
- [2 Specifications](#)
- [3 Installation](#)
- [4 REMOTE CONTROL ASSOCIATION](#)
- [5 OPTIONAL: Installing the app](#)
- [6 Documents / Resources](#)
  - [6.1 References](#)

## SMART2110 Smart Wi-Fi Module Kit For Shutters

Transform a traditional shutter button into a smart solution. It can be installed

in a 503 box or DIN rail (support included), thanks to its small size. Supports a maximum load up to 2A (500W). Manage through the app: opening, closing, time schedules, and group controls (in the case of multiple modules). Furthermore, on the module, there is an input for the connection of a traditional button, which, together with the included remote control, allows you to conveniently manage the shutters locally even in the absence of Wi-Fi. The device can be controlled via app, Google Home and Alexa voice assistants, via a wired button, and supplied remote control.

**Specifications**

Power supply:	100-250Vac
Max. load:	500 W
Max. current:	2 A
Outputs:	2
Connection:	Screw terminals
Frequency:	Wi-Fi 2,4GHz + RF
Dimensions:	52 x 47 x 18mm
Weight:	40 g

**Installation**

**ATTENTION!** Installation must be carried out by a qualified electrician in accordance with local regulations. The module works with a 2.4GHz Wi-fi network. The 5GHz band is not compatible.



then press the STOP “II” button on the remote control

**RESET:** Press the button on the module for more than 10 seconds to reset the WI-FI (the module rings BEEP – BEEP). Press the button 10 times to reset the memory of the associated remote controls.

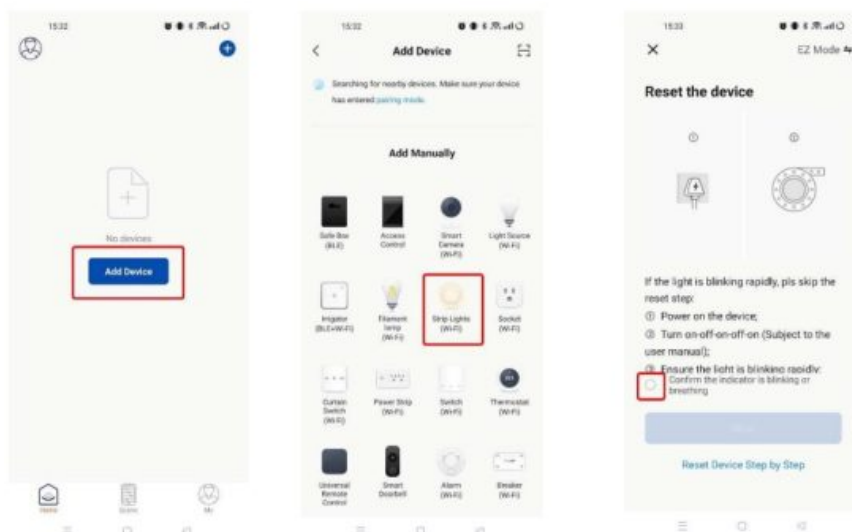
## OPTIONAL: Installing the app

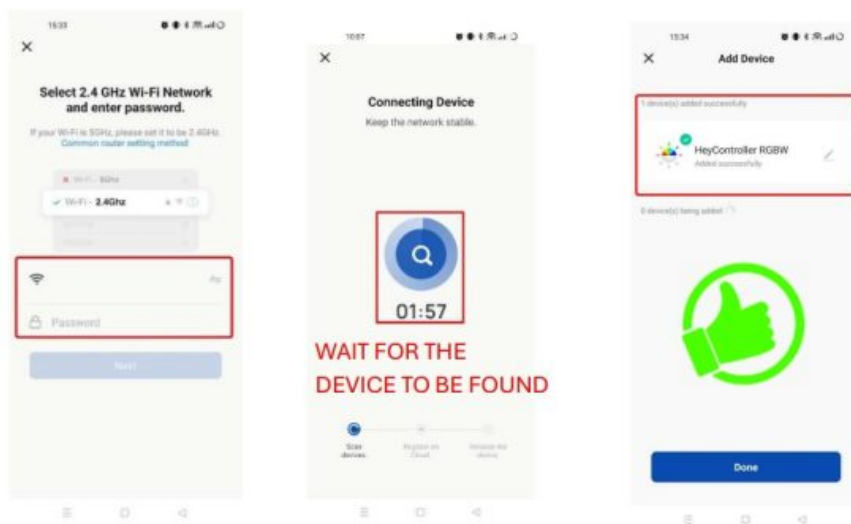
1. Scan the QR CODE to download the HeySmart app and register an account with EMAIL and PASSWORD
2. Connect your smartphone to the 2.4GHz WI-FI router to which the controller will also connect.
3. Open the app and follow the wizard.



<https://a.smart321.com/konelcoheysmart>

**NOTE:** If this doesn't work, make sure the WI-FI signal is 2.4GHz and that the name and password do not exceed 16 characters and/or have no special symbols (! # € % & etc...).





**To all residents of the European Union**

### **Important environmental information about this product**

This symbol on the device or the package indicates that disposal of the device after its lifecycle could harm the environment. Do not dispose of the unit (or batteries) as unsorted municipal waste; it should be taken to a specialized company for recycling.

This device should be returned to your distributor or to a local recycling service. Respect the local environmental rules.

**If in doubt, contact your local waste disposal authorities.**



Made in China

The Manufacturer, KON.EL.CO SpA-Piazza Don E. Mapelli, 75-20099-Seste S. Giovanni-MI-Italy, declares that this radio equipment complies with Directive 2014/53/EU. The full text of the EU Declaration of Conformity is available at the following internet address: [www.gbconline.it](http://www.gbconline.it)

Use this device with original accessories only. Velleman Group NV cannot be held responsible in the event of damage or injury resulting from (incorrect) use of this device. For more info concerning this product and the latest version of this manual, please visit our website [www.velleman.eu](http://www.velleman.eu). The information in this manual is subject to change without prior notice.

© **COPYRIGHT NOTICE**


The copyright to this manual is owned by Velleman Group NV. All worldwide rights reserved. No part of this manual may be copied, reproduced, translated, or reduced to any electronic medium or otherwise without the prior written consent of the copyright holder.

V1.0 – 08/08/2025

©Velleman Group nv

**S M A R T**

**Documents / Resources**

	<a href="#">SMART SMART2110 Smart Wi-Fi Module Kit For Shutters [pdf]</a> User Guide SMART2110, SMART2110 Smart Wi-Fi Module Kit For Shutters, Smart Wi-Fi Module Kit For Shutters, Wi-Fi Module Kit For Shutters, Module Kit For Shutters
--	---

**References**

- [User Manual](#)

Smart

Module Kit For Shutters, Smart, Smart Wi-Fi Module Kit For Shutters, SMART2110, SMART2110 Smart Wi-Fi Module Kit For Shutters, Wi-Fi Module Kit For Shutters

**Leave a comment**

Your email address will not be published. Required fields are marked \*

Comment \*

Name

Email

Website

☐ Save my name, email, and website in this browser for the next time I comment.

**Post Comment**

**Search:**

e.g. whirlpool wrf535swhz

**Search**

[Manuals+](#) | [Upload](#) | [Deep Search](#) | [Privacy Policy](#) | [@manuals.plus](#) | [YouTube](#)

This website is an independent publication and is neither affiliated with nor endorsed by any of the trademark owners. The "Bluetooth®" word mark and logos are registered trademarks owned by Bluetooth SIG, Inc. The "Wi-Fi®" word mark and logos are registered trademarks owned by the Wi-Fi Alliance. Any use of these marks on this website does not imply any affiliation with or endorsement.