




SMART TECH BLE-01 Bluetooth Anti Loss Device Instructions

[Home](#) » [SMART TECH](#) » SMART TECH BLE-01 Bluetooth Anti Loss Device Instructions 

Contents

- [1 SMART TECH BLE-01 Bluetooth Anti Loss Device](#)
- [2 Instructions](#)
- [3 APP Download Method](#)
- [4 Use mode](#)
- [5 Camera](#)
- [6 Location](#)
- [7 Product specification](#)
 - [7.1 Help](#)
- [8 Documents / Resources](#)
 - [8.1 References](#)
- [9 Related Posts](#)

SMART

SMART TECH BLE-01 Bluetooth Anti Loss Device



Instructions

- Thanks for choosing Bluetooth anti-loss device
- This device is a Bluetooth 4.0 based product with low power consumption. It is able to find easily lost items like key, handbags, etc and avoid them to lose again by using a free APP on a mobile device, even you can put this device on a child to keep him or her in the safe range you set with Mobile APP or hang ditto a pet, which you won't worry it going lost.

APP Download Method

App name to suit this device is Kind elf

1. For iOS user, they can search "Kind elf" from APP Store then download and install it.
2. For Android user, they can search "Kind elf" from Google play then download and install it. Users in mainland China can download it from Map or other Mobile APP market.

All screenshots used in user manual are from iPhone X. Allowing system location, microphone and camera all access able. Android users are subject to practice, phone bluetooth opened before using.

Use mode

- **Switching/off**
 - **Switch on:** press button for 3 seconds then you will hear a "Di" sound for twice and indicator starts to

flash all the time.

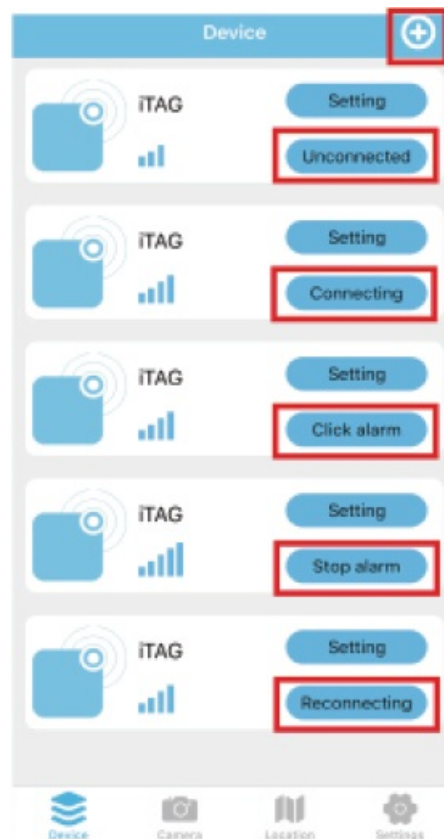
- **Switch off**: press button for 4 seconds then you will hear that “Di” sound for once only and indicator flashing fast to go out.

- **Device**

- Open APP into the “Device” interface as below.

Click “EB”. below graphic signs appeared.

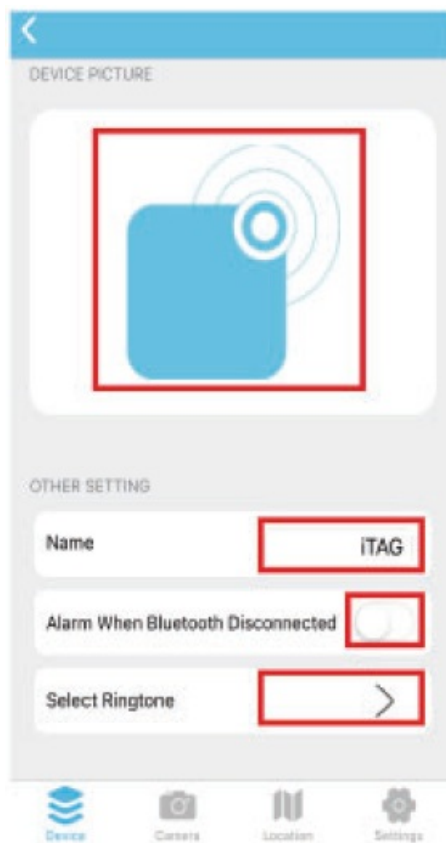
- A. Click “Unconnected”, as graphic sign .
- B. Appear “Connecting”, as graphic sign.
- C. After connected as graphic sign.



- D: Click “Click alarm”, as graphic sign. The device starts to make sound of “Di Di” all the time and will stop “DiDi” when clicking “Stop alarm” again. Double click of bluetooth device button, an alarm ring pre-set up will be happened and it will stop once click of that button again.

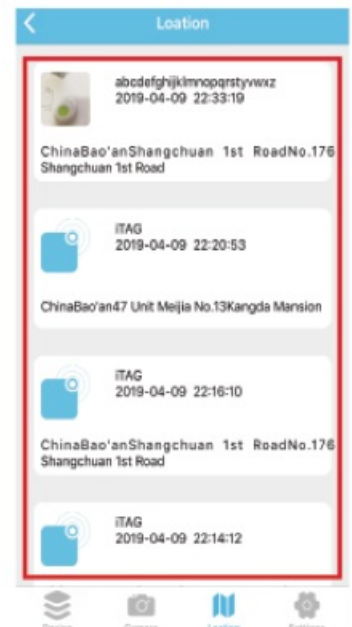
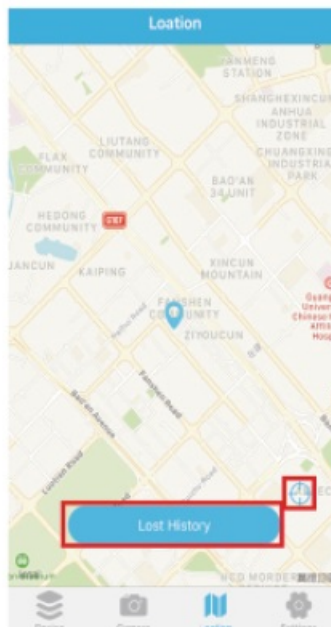
Click “Setting”, as graphic sign.

- Click graphic signs to change the device picture as picture.
- Change the device name as graphic signs.
- Alarm when Bluetooth Disconnected” default in closed, can be opened by manual, otherwise smart phone won’t alarm when it disconnects with bluetooth anti-lost device, recommend to open as graphic signs.
- Click on “Select Ringtone” the right side to enter the ringtone interface, select the ringtone type as graphic sign.



Camera

With camera function, single click on the device to have fun of selfie, and switch between front and rear camera freely.

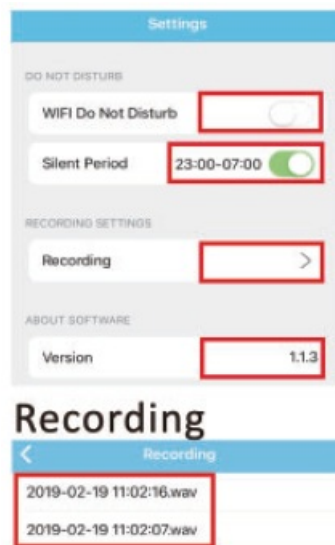


Location

- The device will work with positioning function when it gets disconnected with smartphone, which will keep the exact positioning location when disconnecting and is able to find the history of last seen position. Turning on GPS and keep smart phone connected with internet, otherwise map not updated.

Settings

- **WIFI Do Not Disturb:** Default in closed, but in a Wifi covering area when opened to get connected with a smart phone, the smart phone won't ring when disconnecting.
- **Silent Period:** Default in opened, set up period from 23:00PM to 07:00AM next day, non-interference can be set up closed or reset up the time period.
- **Recording:** Get into below interface to use voice recorder, single click on button to start voice recording and click the button again to stop and recorded file will saved in wav format.
- Default in closed ,click on the right to open.
- Default in opened, click on the right to close or reset the Silent period.
- Click on the right side to enter the recording interface.
- Software Version.



- Enter the recording interface, click the button to start recording, click the button again, stop recording, and automatically generate a recording document.

Product specification

1. **Supported 105 and Android system:** Recommended iOS version 11 and above; The Android system needs 8.0 or above, and the phone needs to support the Bluetooth 4.0 standard.
 2. Support Bluetooth Low Energy (BLE), support two-way alarm.
 3. **Frequency range:** 2.402-2.480GHz.
- **Receiving sensitivity:** – 94 dBm
 - **Operating environment:** – 20 -70 'C
 - **Operating voltage:**2. 7-3.2V Standby
 - **current:** less than 3uA.

FCC Warning

- This equipment has been tested and found to comply with the limits for a Class B digital device, pursuant to part 15 of the FCC Rules.
- These limits are designed to provide reasonable protection against harmful interference in a residential

installation.

- This equipment generates, uses and can radiate radio frequency energy and, if not installed and used in accordance with the instructions, may cause harmful interference to radio communications. However, there is no guarantee that interference will not occur in a particular installation.
- If this equipment does cause harmful interference to radio or television reception, which can be determined by turning the equipment off and on, the user is encouraged to try to correct the interference by one or more of the following measures

Reorient or relocate the receiving antenna

- Increase the separation between the equipment and receiver.
- Connect the equipment into an outlet on a circuit different from
- Consult the dealer or an experienced radio/TV technician for help. Caution: Any changes or modifications to this device not explicitly approved by manufacturer could void your authority to operate this equipment

This device complies with part 15 of the FCC Rules. Operation is subject to the following two conditions

1. This device may not cause harmful interference, and
 2. This device must accept any interference received, including interference that may cause undesired operation.
- The device has been evaluated to meet general RF exposure requirement. The device can be used in portable exposure condition without restriction.

Help

- Why can't the anti-lost device connect to smart devices (Mobile phones, tablets, etc)?

The Working distance of the device?

- The anti-lost device is a personal communication consumer product, it belongs to the Class 2 standard, and the general distance is 12 – 30 meters (without any barriers)

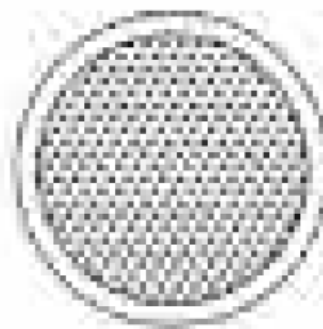
Why is the device alarming frequently at home ?

- Due to the poor penetration of the Bluetooth standard to the spacers, if there are more load-bearing walls in the actual living room, the anti-lost device will be frequently alarmed. It is recommended that the user can refer to the help point 2 to optimize the experience. If you are sensitive to this requirement, it is recommended to consider it. Please be cautious to purchase such products.

How to distinguish the positive and negative of the button battery?

- (If the accessory is not a button battery, skip it) See the diagram.

Positive



Negative

- **Key points:** Some of the information in this manual is based on network information. If there is any dispute or objection to the citation, please refer to the professional information. This description is only for how the APP is used, and does not bear the losses or legal liabilities caused by other misunderstandings.

Documents / Resources



[SMART TECH BLE-01 Bluetooth Anti Loss Device](#) [pdf] Instructions
BLE-01, BLE-01 Bluetooth Anti Loss Device, Bluetooth Anti Loss Device, Anti Loss Device, Loss Device, Device

References

- [User Manual](#)