



SMART POINT SPSLEDLTS-30 Smart Indoor LED String Lights User Manual

[Home](#) » [SMART POINT](#) » SMART POINT SPSLEDLTS-30 Smart Indoor LED String Lights User Manual 

SMART POINT SPSLEDLTS-30 Smart Indoor LED String Lights User Manual



Contents

- [1 FEATURES](#)
- [2 DOWNLOAD APP](#)
- [3 REGISTRATION AND LOGIN](#)
- [4 ADD DEVICE](#)
- [5 CONTROLLING THE LIGHTS](#)
- [6 Remote Control](#)
- [7 GROUPING MULTIPLE LIGHTS TOGETHER](#)
- [8 PUSH NOTIFICATIONS](#)
- [9 REMOVE A DEVICE / RECONNECTING TO A NEW WIFI NETWORK](#)
- [10 How to control the String Lights with Amazon Alexa](#)
- [11 How to control the String Lights with Google Assistant](#)
- [12 SPECIFICATIONS](#)
- [13 FCC Statement](#)
- [14 WARRANTY INFORMATION](#)
- [15 Documents / Resources](#)
 - [15.1 References](#)
- [16 Related Posts](#)

FEATURES

- Wi-Fi remote controlled
- Changes to 16 million colors or white
- Dimmable & Programmable with Schedule
- App and Voice Control
- Works with Hey Google or Amazon Alexa
- Syncs with music
- Can be controlled with remote control
- Pre-programmed color changing modes



Please note that these lights cannot be cut!

Items included in package:

Smart String Lights, Remote Control, USB Adapter, User Manual and Adhesive Strip.

DOWNLOAD APP

1. Android™: download “Smart point Home” app on Google Play.



2. iPhone: download “Smart point Home” app from the App Store.

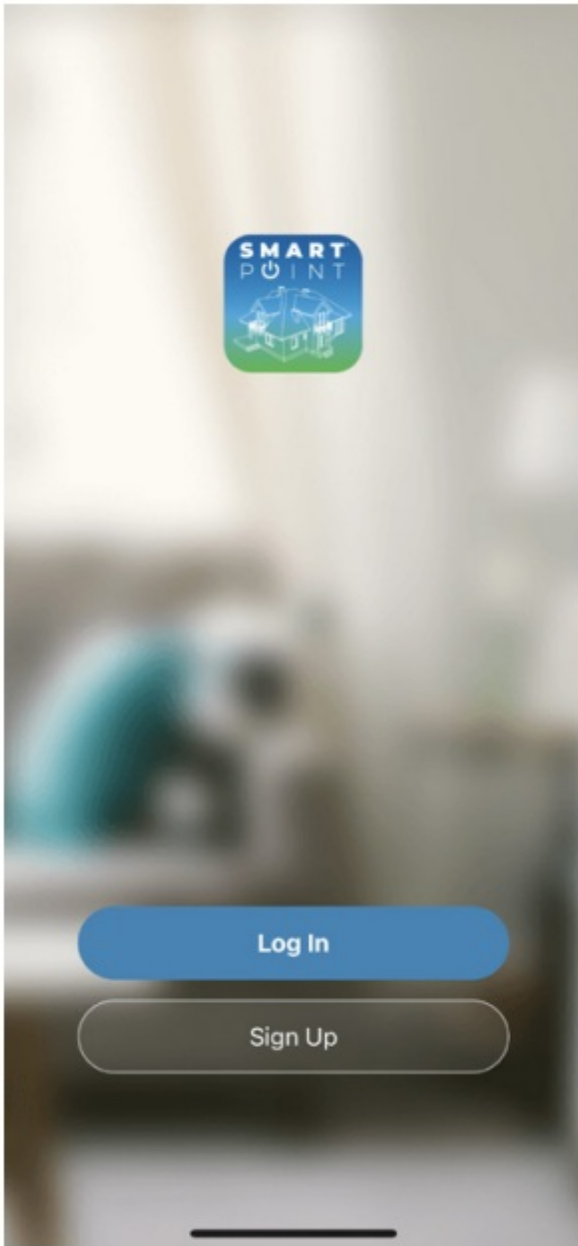


Smart point Home



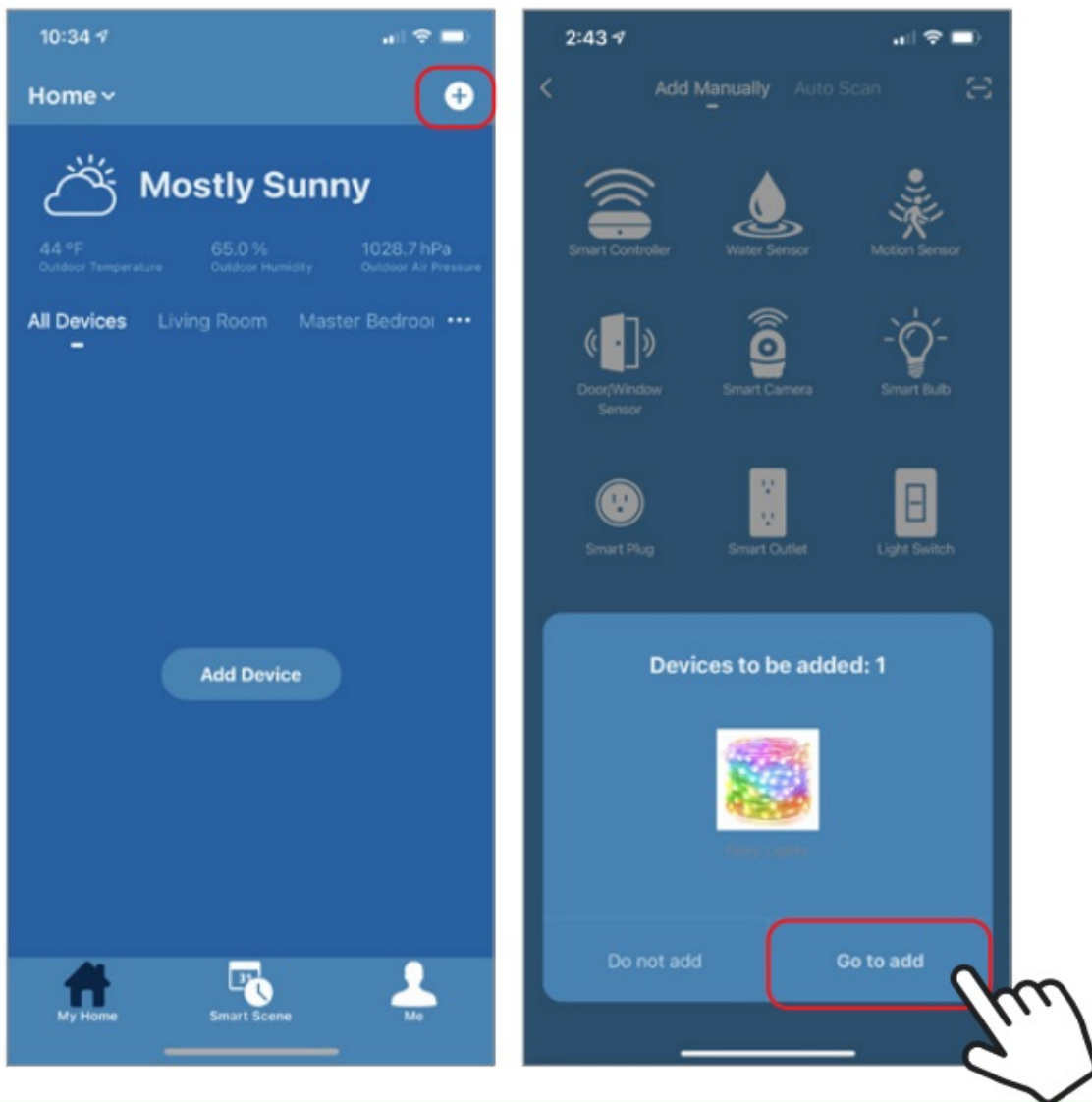
REGISTRATION AND LOGIN

1. Run the “Smartpoint Home” app from your smart phone.
2. Sign up and login.

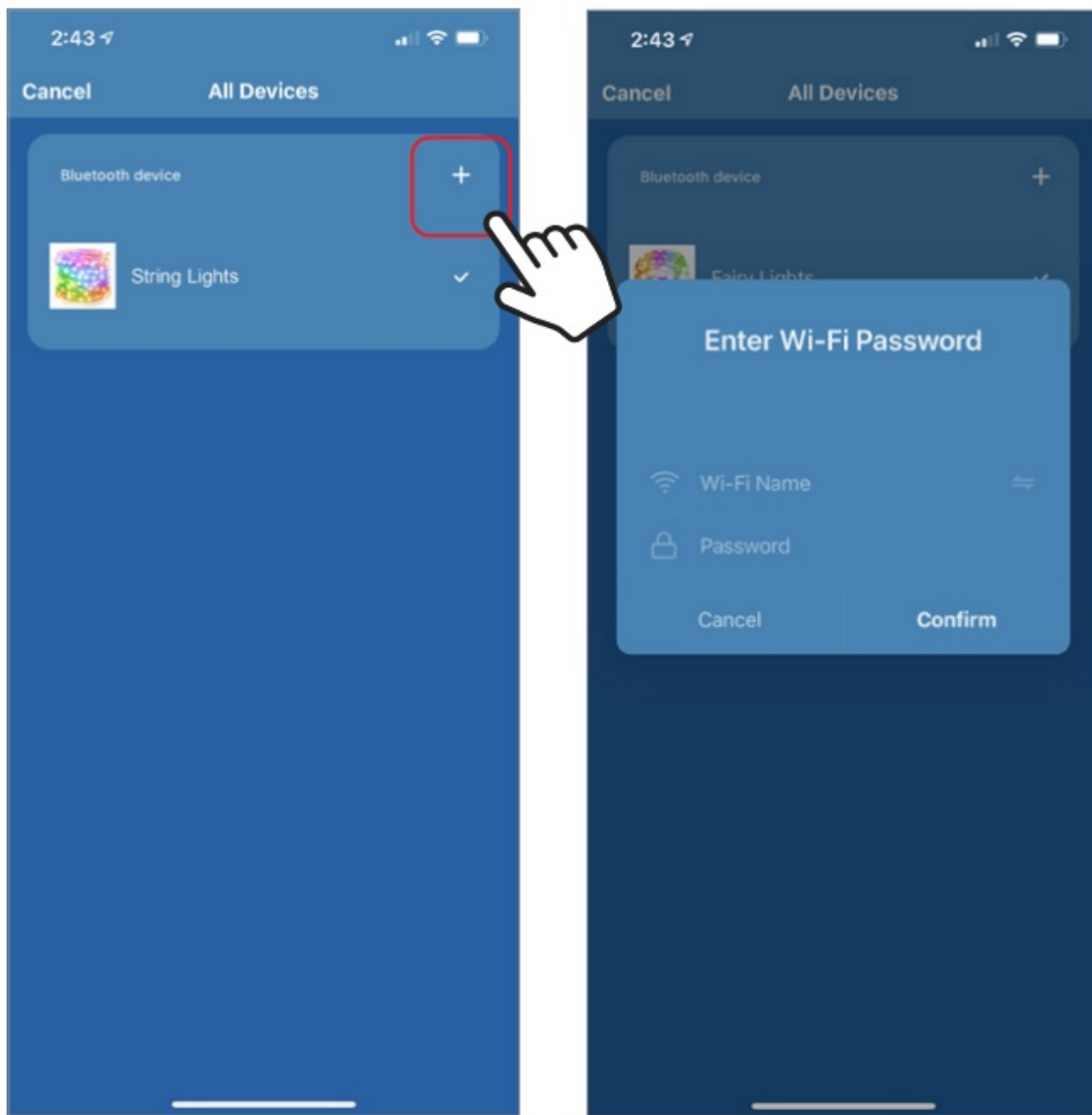


ADD DEVICE

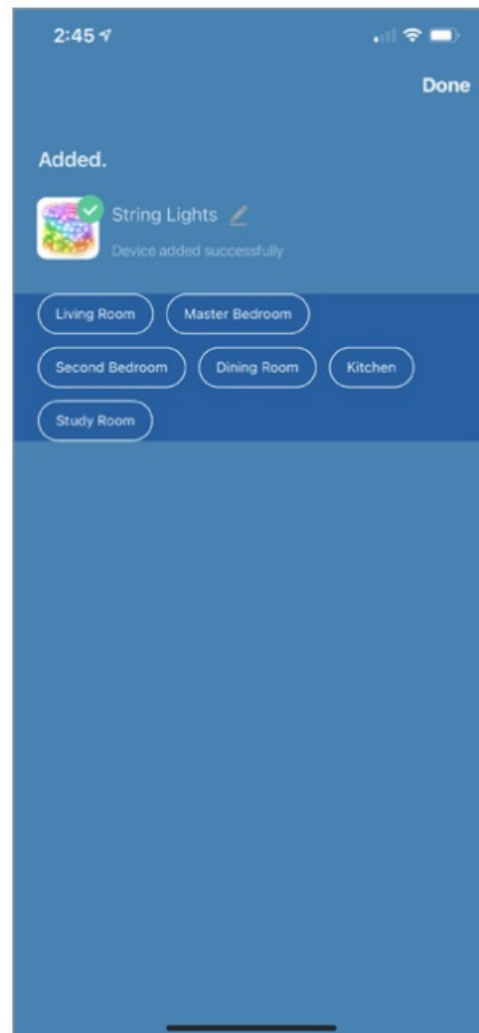
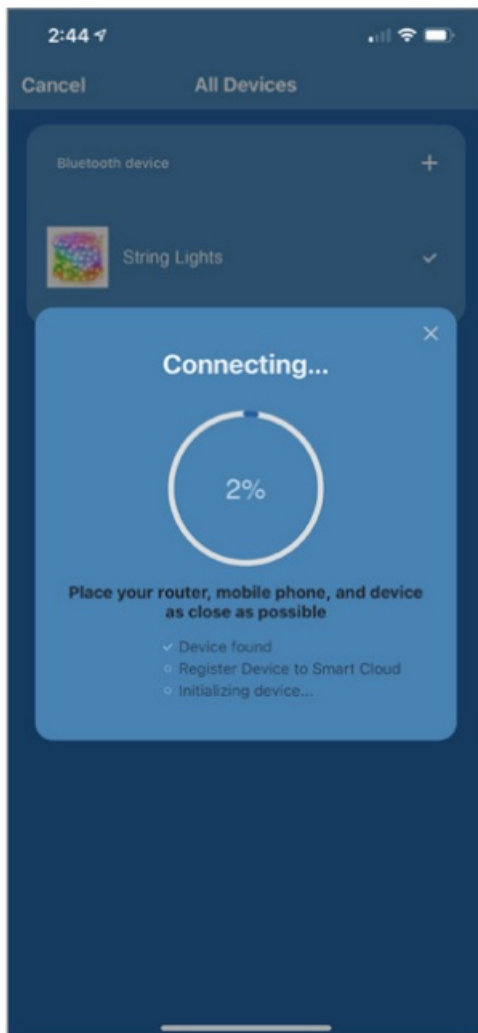
1. Plug lights into a USB port. Then press and hold reset button on the cord for 4-6 seconds and let go. The lights will then begin to blink rapidly.
2. Make sure phone is connected to your Wi-Fi network and that it is a 2.4GHz network.
3. Press the (+) symbol in the top right corner of the app and when device window pops up press “Go to add”.



4. On the next screen press the “+” symbol to begin adding the String Lights.
5. Make sure phone is connected to the Wi-Fi network that the device will be connected to. Enter your password for the Wi-Fi network.



6. Connecting process will begin. Do not unplug String Lights while connecting. Wait for connection process to complete.
7. Once device has been successfully added, name the device what you would like it to be called in the app. The String Lights are ready for use.



CONTROLLING THE LIGHTS

There are three modes for the String Lights.

Dimmer, Scene and Music modes. All of these modes can be found at the bottom of the app screen when the lights are selected.

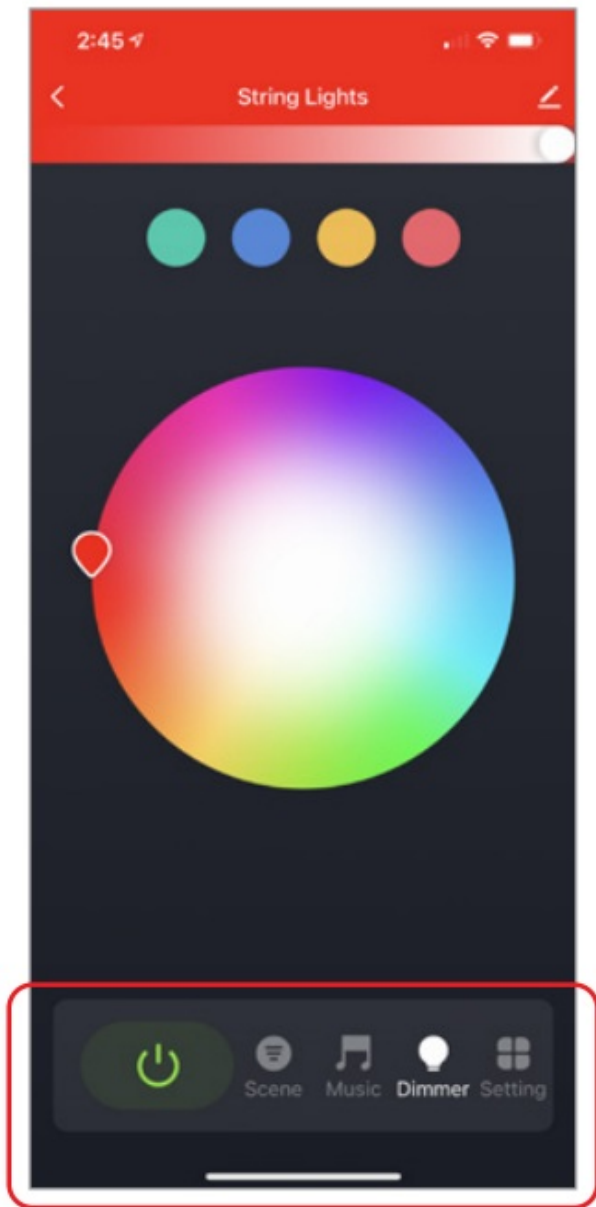
Dimmer mode lets you pick the brightness and color of the lights. To make the light white click on the white part of the color wheel or use the remote control and press “W”

Scene mode has preprogrammed color settings to pick from.

Music mode changes light to the rhythm of music.

The bottom right has an on/off switch for the lights.

You can also **set a schedule or timer** for your String Lights at the bottom right of the app screen.



Remote Control

Lights can also be controlled with **controller box**.

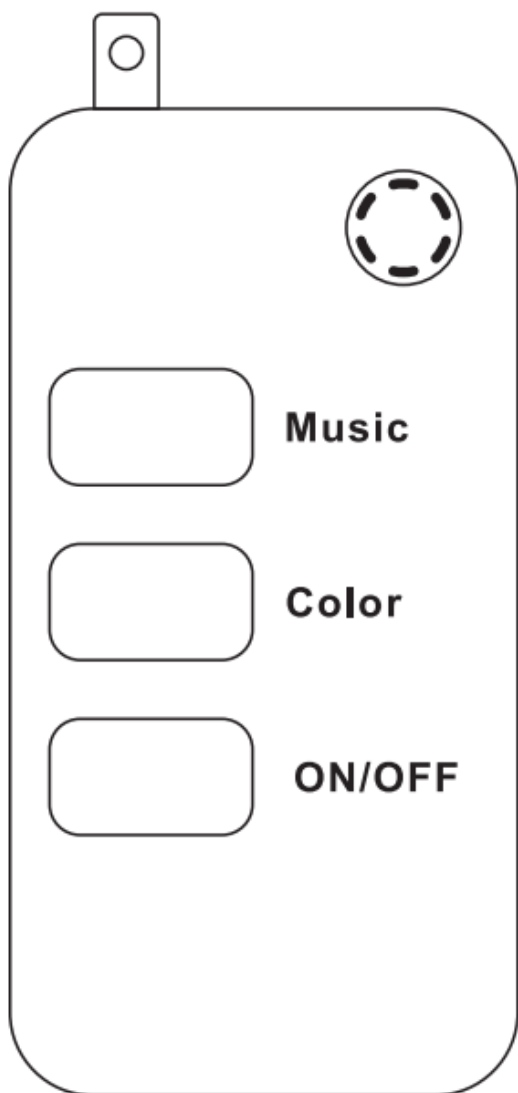
Music Button: Short press to enter music sync mode.
You can cycle between 4 music modes.

Color Button: Short press to switch to 20 different preprogrammed scene modes.

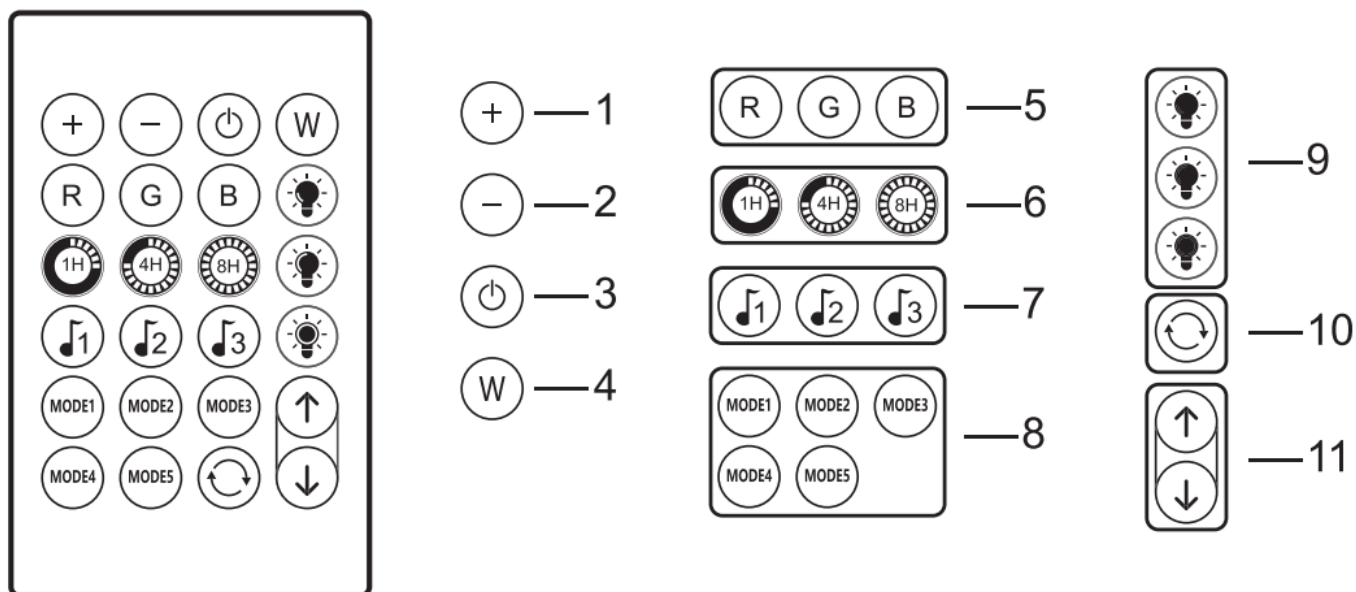
On/Off : Short press to turn on/off LED lights.

Long press for 5 seconds to put in network set up mode.

There is also an included adhesive strip to secure the controller box to a smooth, flat surface.



Lights can also be controlled with **Remote Control**.
(remove clear plastic tab to use remote control)



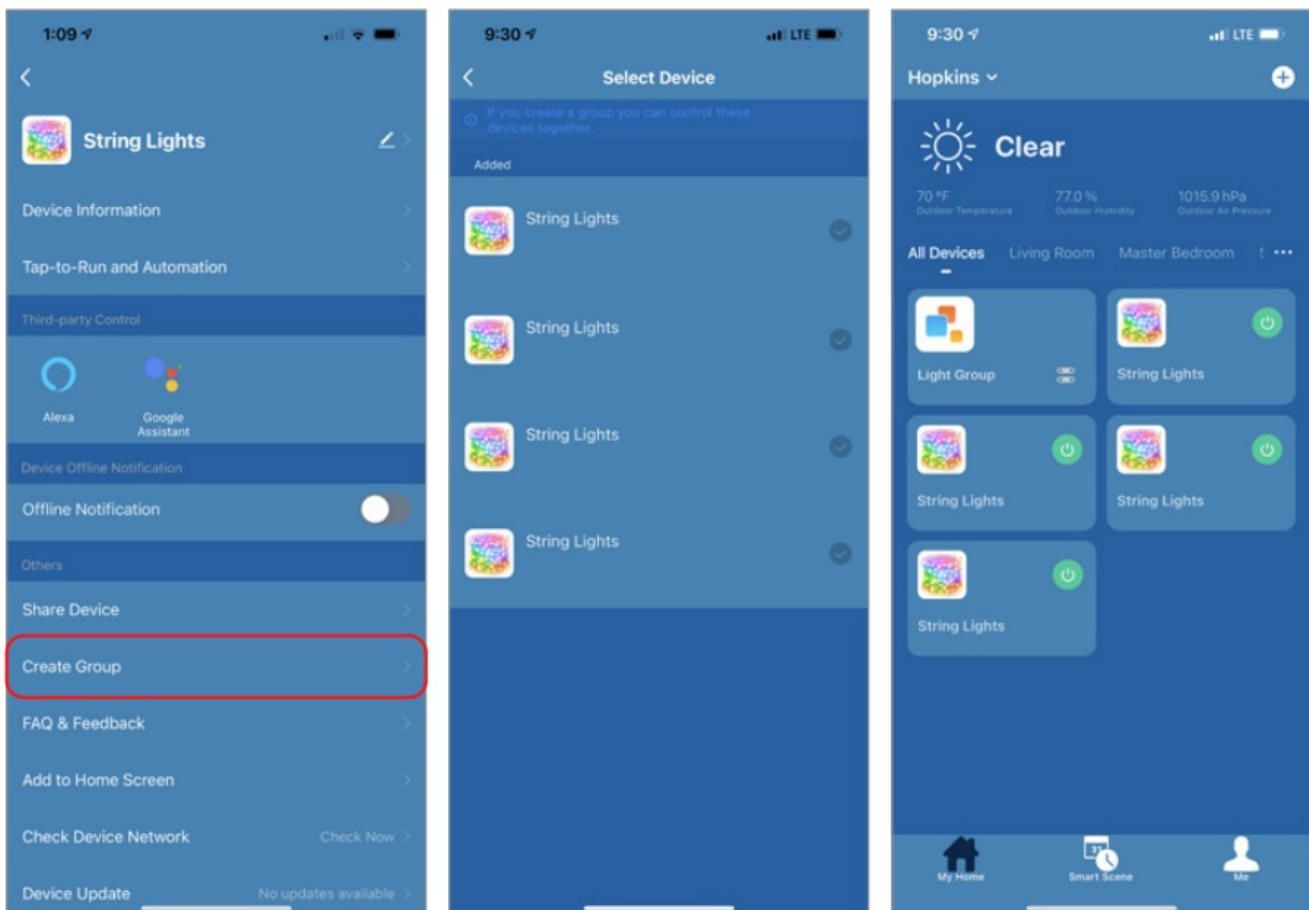
1. Increases LED brightness adjustment
2. Decreases LED brightness adjustment
3. On/Off button
4. LED white button (switch between cold & warm)

5. LED color buttons (red, green and blue)
6. Timing function on/off: 1 hour, 4 hours, 8 hours
7. 3 music modes
8. 5 fixed color rich modes
9. Brightness button: 25%, 50%, 100%
10. Cycles through 20 preprogrammed modes
(Automatically switches every 30 seconds)
11. In static mode these buttons cycle through different colors. In dynamic mode these buttons cycle through preprogrammed modes

GROUPING MULTIPLE LIGHTS TOGETHER

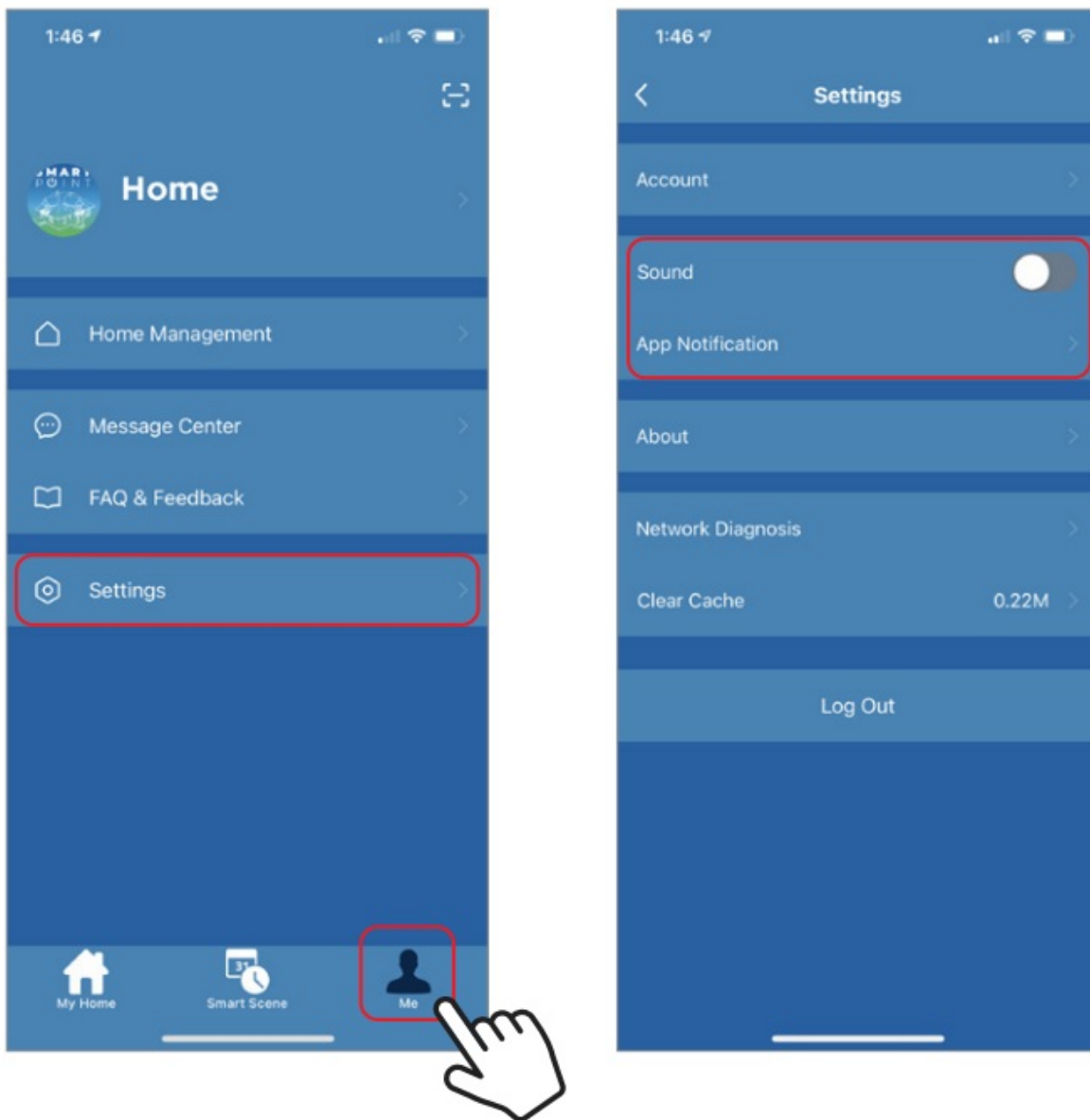
If you have multiple string lights you can group them into one group so you can control all of the settings of all the lights at the same time.

To group multiple lights together be sure to add all of the lights to your Smartpoint Home App. Then select one of the lights and press the settings button in the top right hand corner. Then press “Create Group”. After that, select the lights you want to add to the group and press “Save”. Next, name the group and then press save. The group will now show up on the home screen of your app. When you click on the group, whatever settings you save in the group applies to all of the lights in the group.



PUSH NOTIFICATIONS

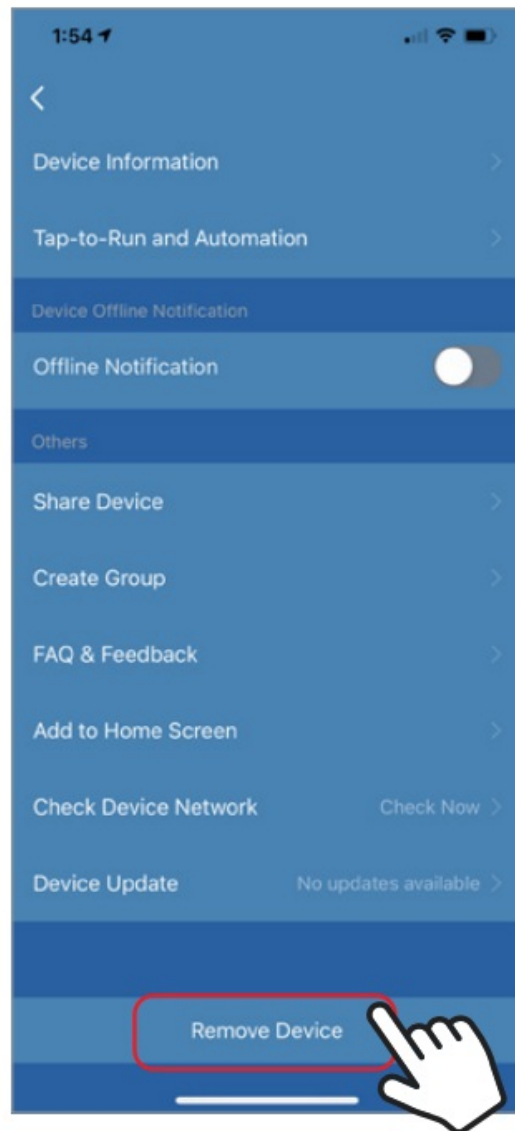
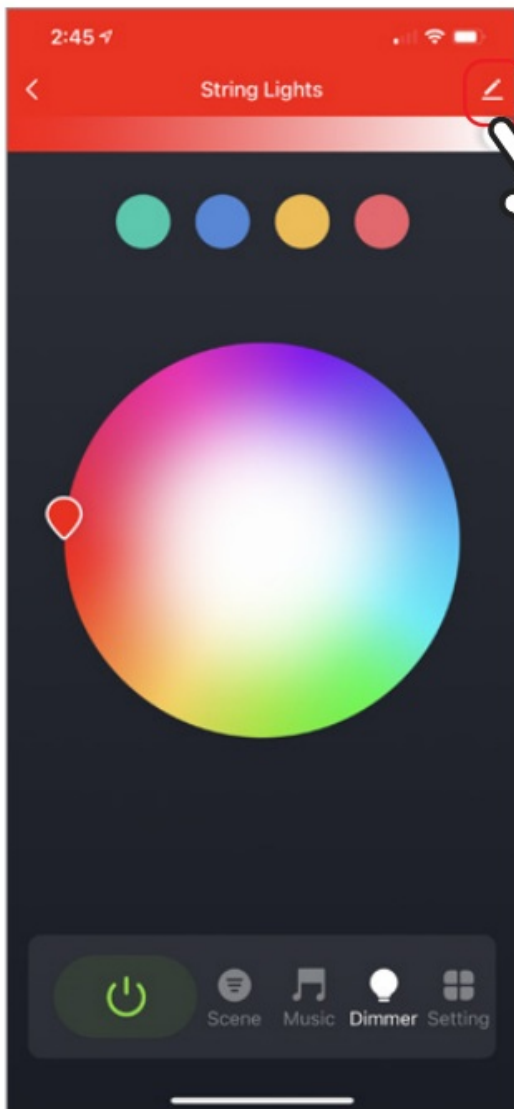
1. You can turn on/off notifications for all devices connected to app by clicking on the “Me” button at the bottom right of the screen.
2. Then click on "Settings" button. From there you can turn access notification settings.



REMOVE A DEVICE / RECONNECTING TO A NEW WIFI NETWORK

If you need to change the WIFI network that your device is connected to, delete the device from the Brookstone Smart App and then start the set up process again when you are connected to the new WIFI Network.

1. From the home screen, click on the device you would like to remove.
2. Then click on the edit symbol on the top right of the screen.
3. From there you would then click the "Remove Device" button at the bottom of the screen.

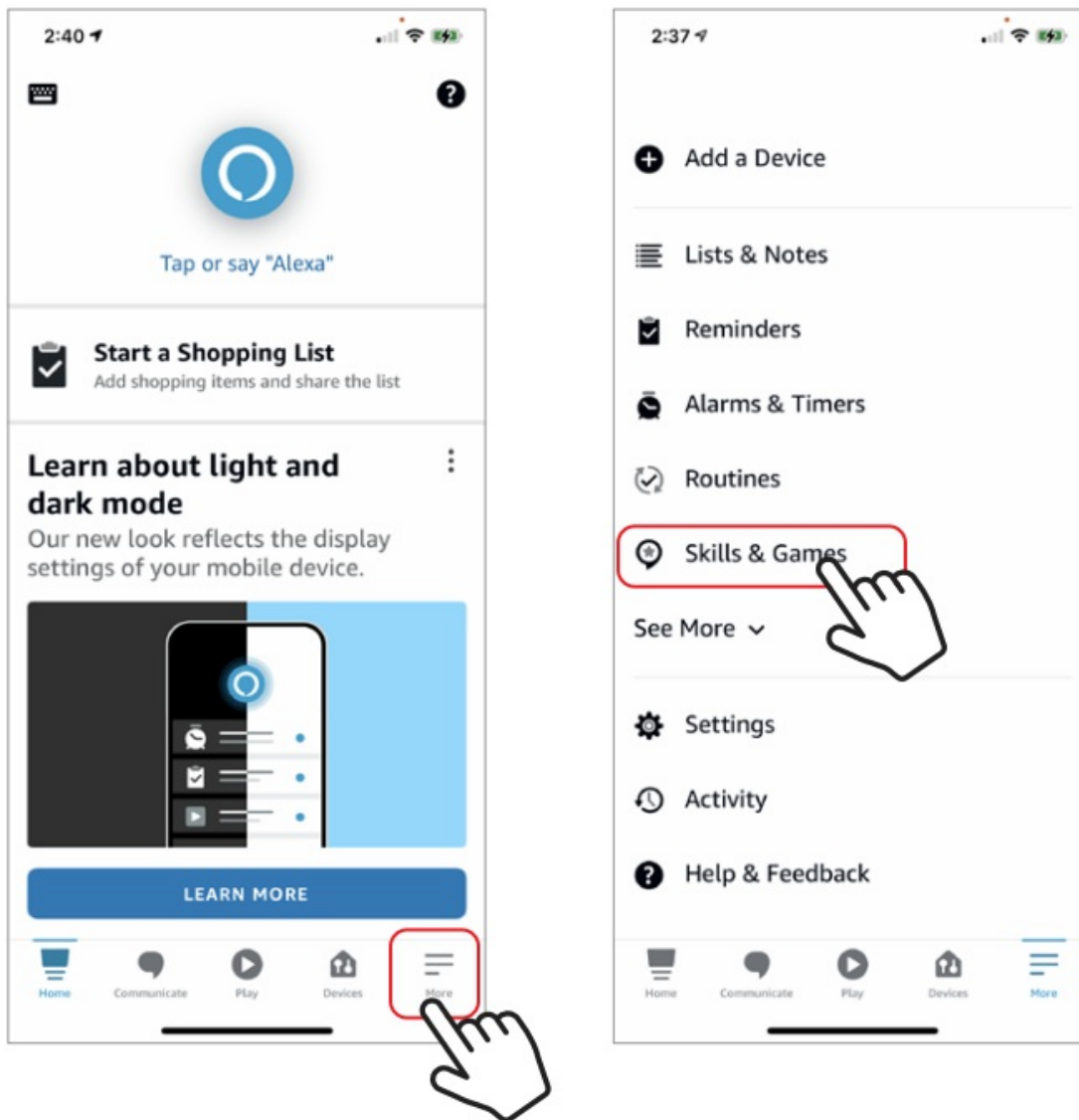


How to control the String Lights with Amazon Alexa

Please make sure that your Alexa app is connected to your Amazon Echo and both work together successfully on your Wi-Fi home network.

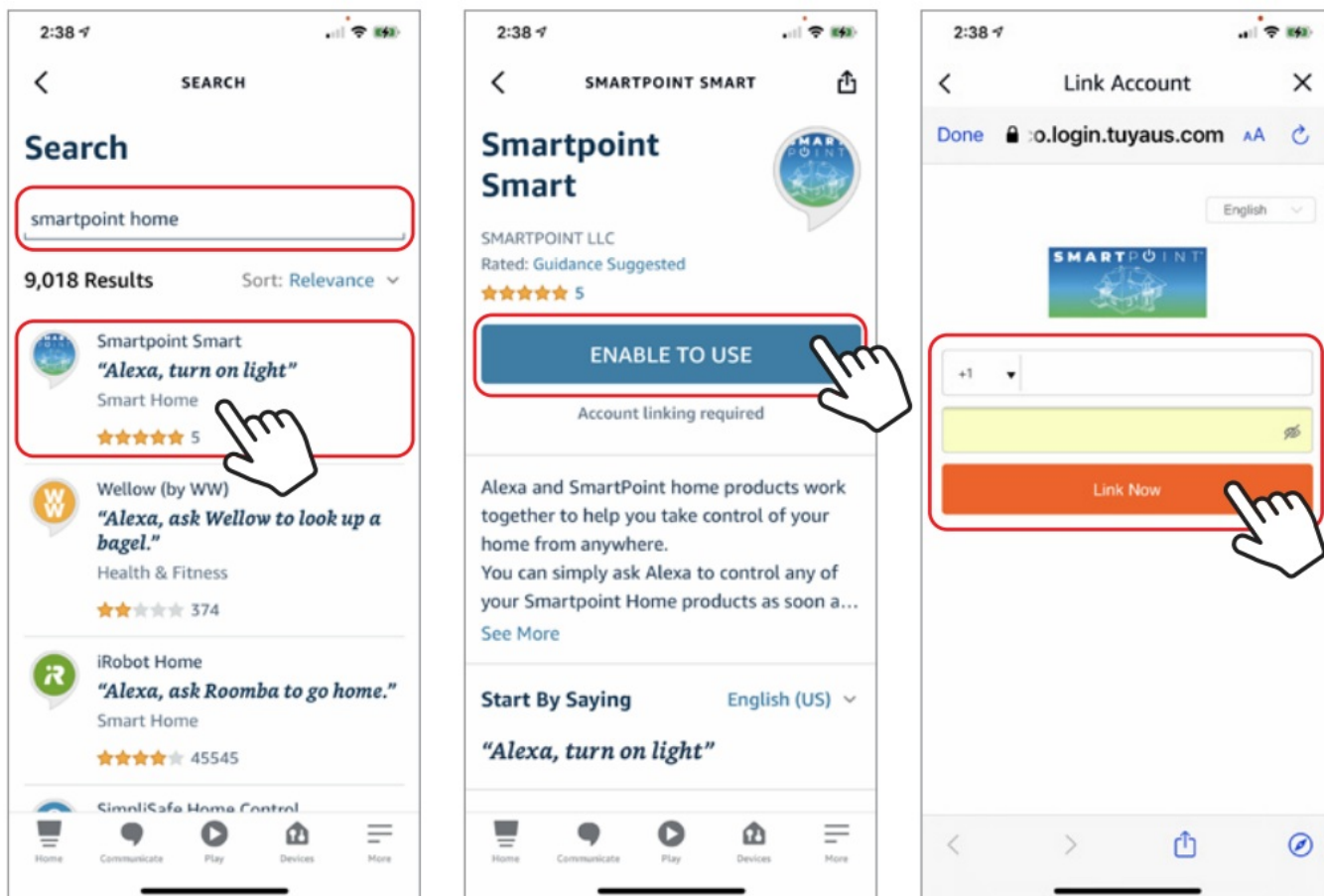


Step A. Log into your Alexa app, tap bottom right corner, and then tap “Skills & Games”.

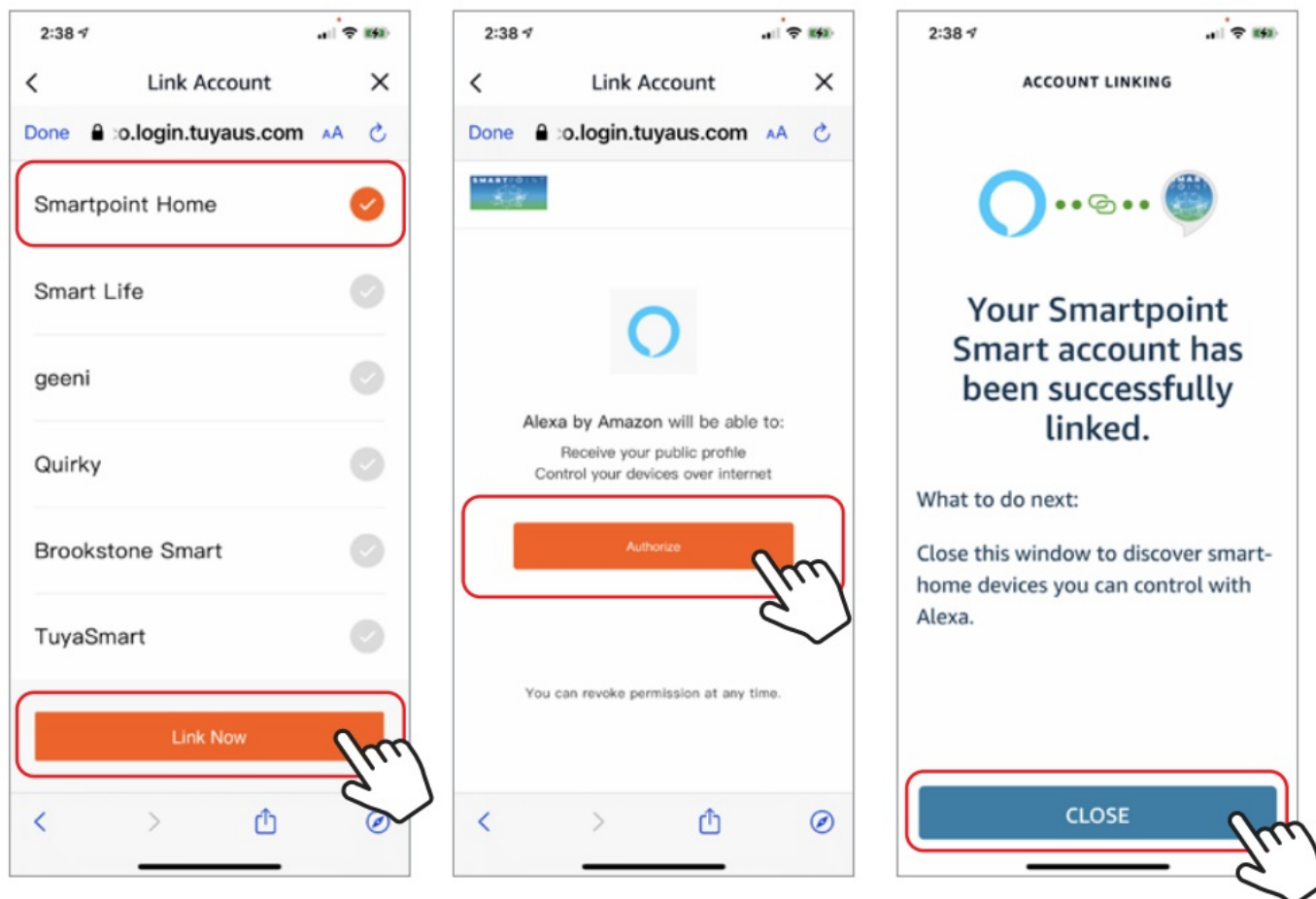


Step B. Type “Smartpoint Home”, find “Smartpoint Home” app in the search results and tap and then tap “enable to use”.

Step C. Enter your account info for the “Smartpoint Home” app, tap “Link Now”, then tap “Smartpoint Home” and tap “Link Now” again. On the next page press “Authorize” to link Smartpoint Home account to Alexa.



Step D. Once your Smartpoint Home account is successfully linked to Alexa, the next page will pop up. Tap "Close" at the bottom and then tap "Discover Devices" on the next page at the bottom right.

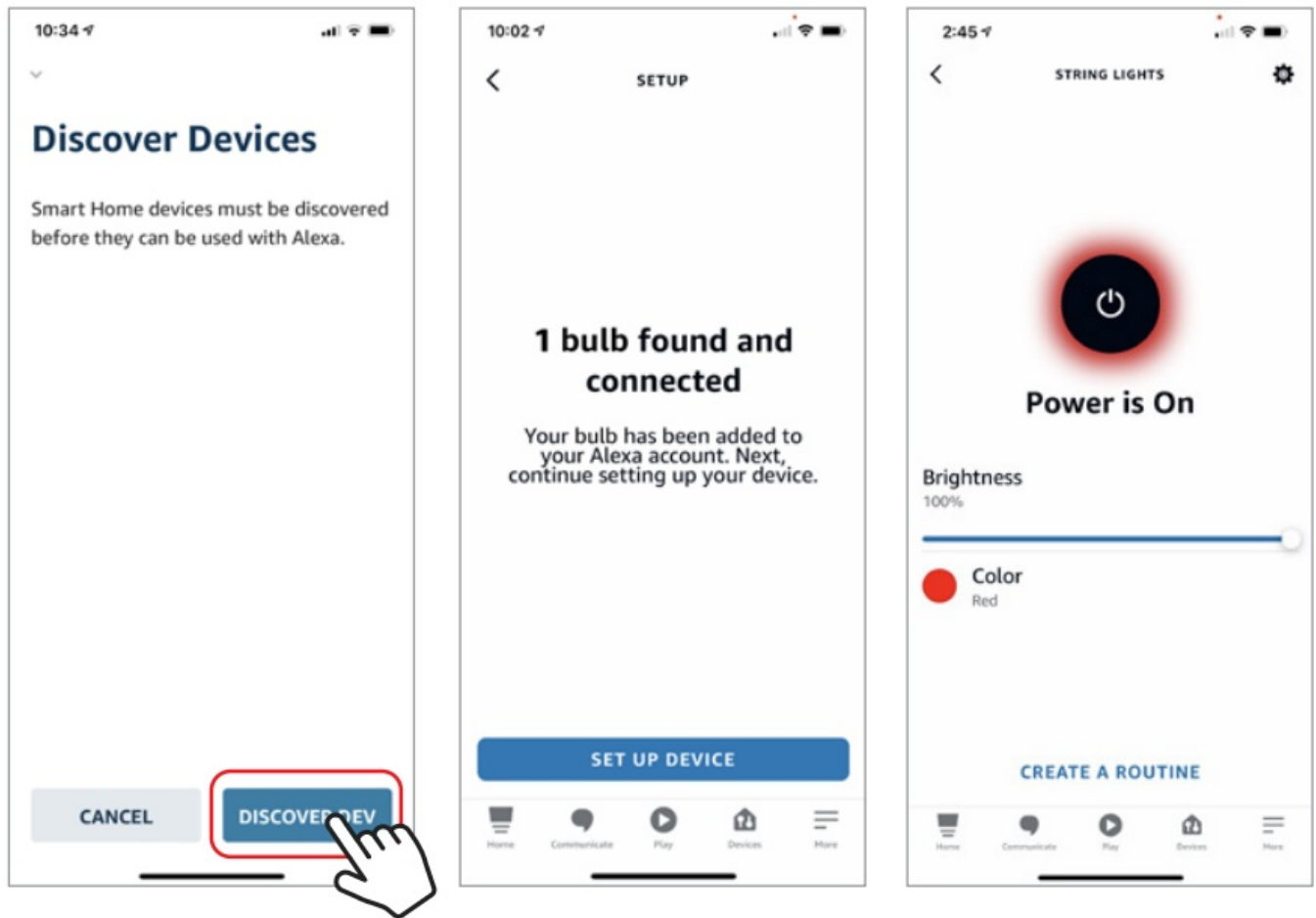


Step E. Wait a few seconds for Alexa to detect the String Lights from the Smartpoint Home app and you will find

the device named “String Lights” has been paired to Alexa app from “Smartpoint Home” app. Follow the on-screen instructions to further set up the device.

The bulb will be named whatever you named it in the Smartpoint Home App.

After Step E is done, you can now control the String Lights with Alexa app from the devices page.



Step F. Now you are able to control the String Lights via Amazon Alexa with your voice.

Try these commands and see what happens by asking Alexa:

- Alexa, turn on “String Lights”
- Alexa, turn off “String Lights”

Note: The device name is the one you give to the String Lights on “Smartpoint Home” app. Let’s name it “Living Room”.

For example, now you can say:

- “Alexa, make the Living Room Blue”,
- “Alexa, make the Living Room Red”, etc.

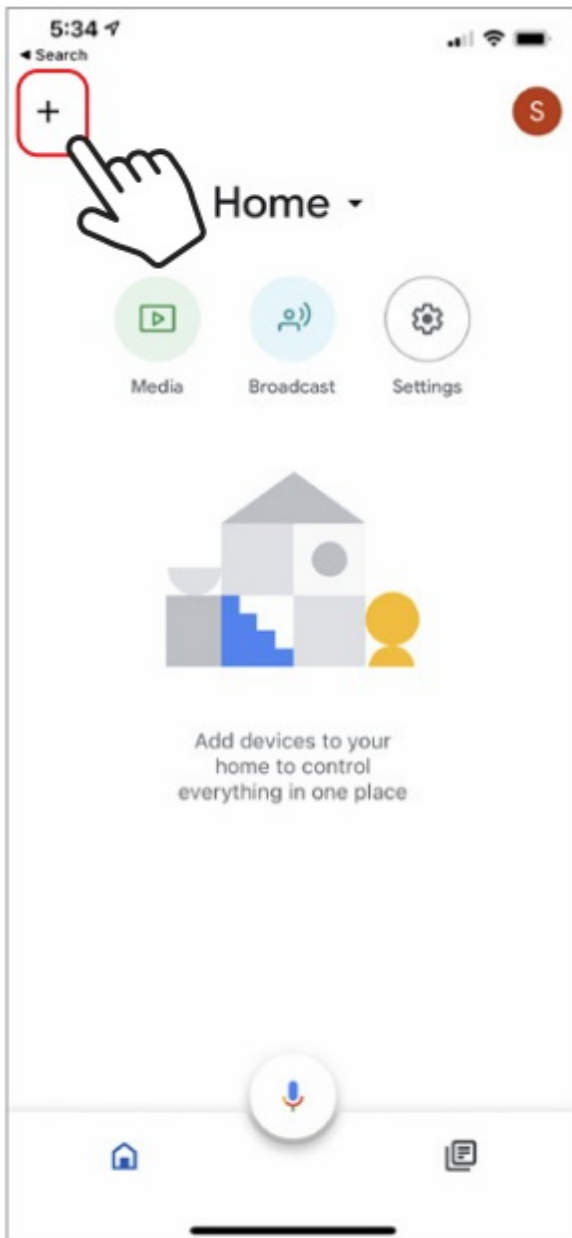
Any device you connect to the Smartpoint Home App should automatically be added to Alexa. If it does not add automatically, ask Alexa to discover devices.

How to control the String Lights with Google Assistant

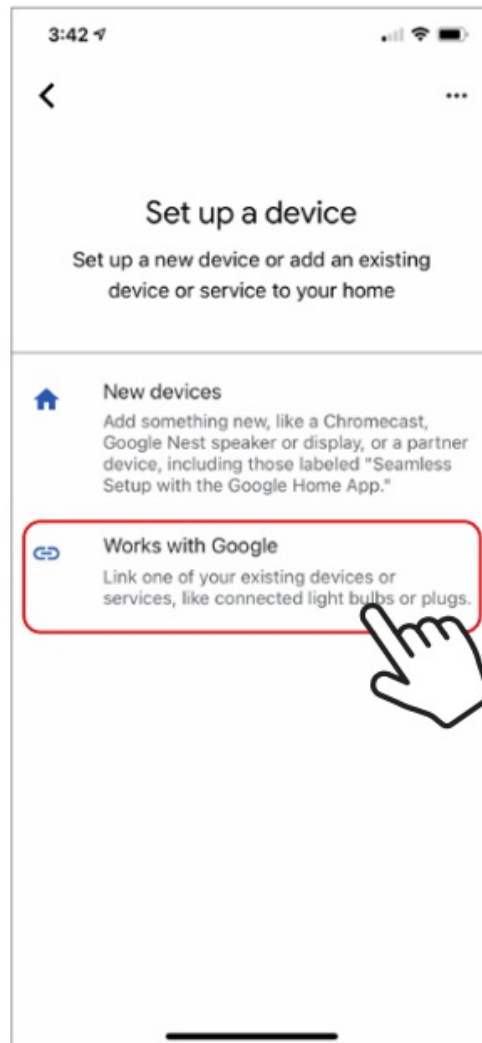
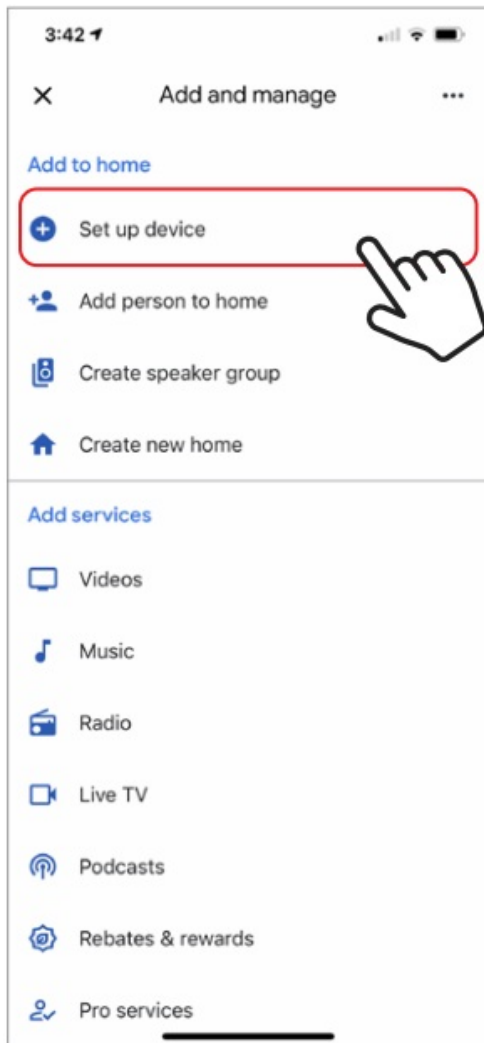
1. Pair String Lights with Smartpoint Home App and name it with an easily recognizable name.
2. Download the Google Home App and register and log in with your Google Account info.



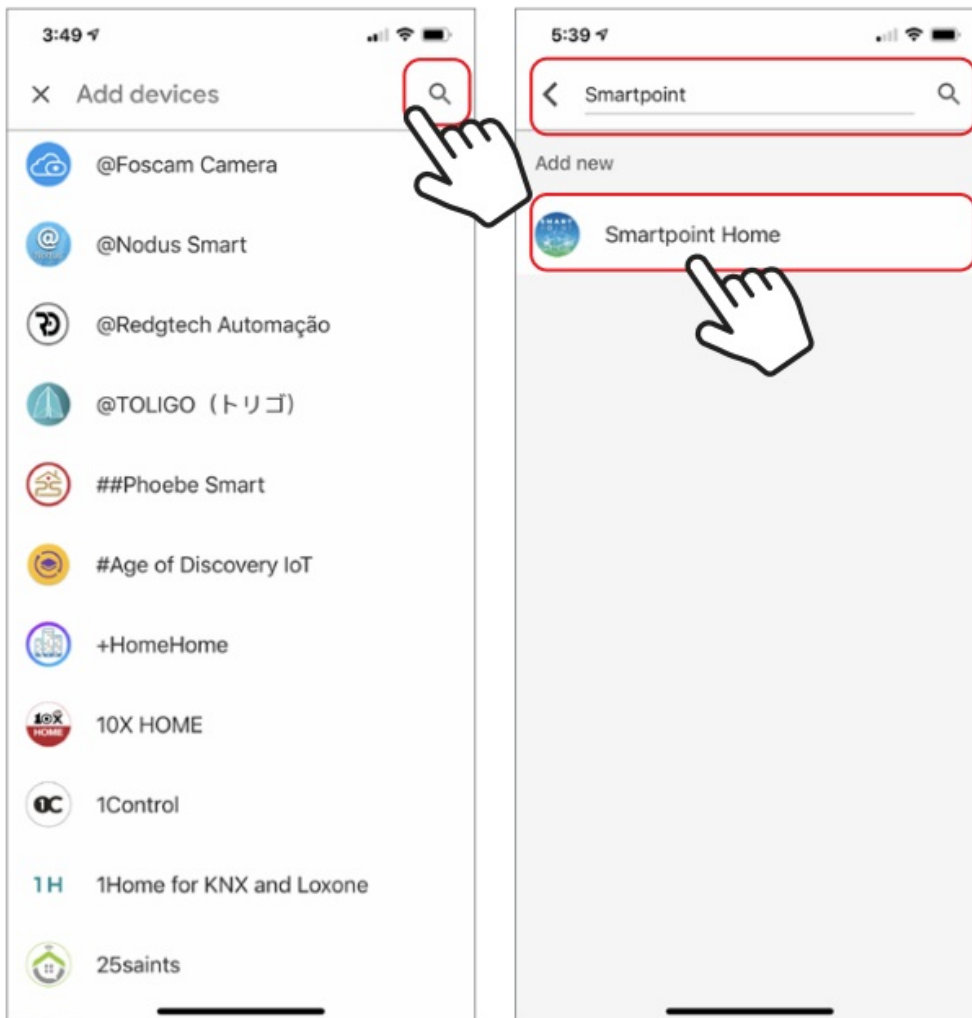
Step A. Once you are logged into your Google Home App, press the (+) icon in the top left hand corner.



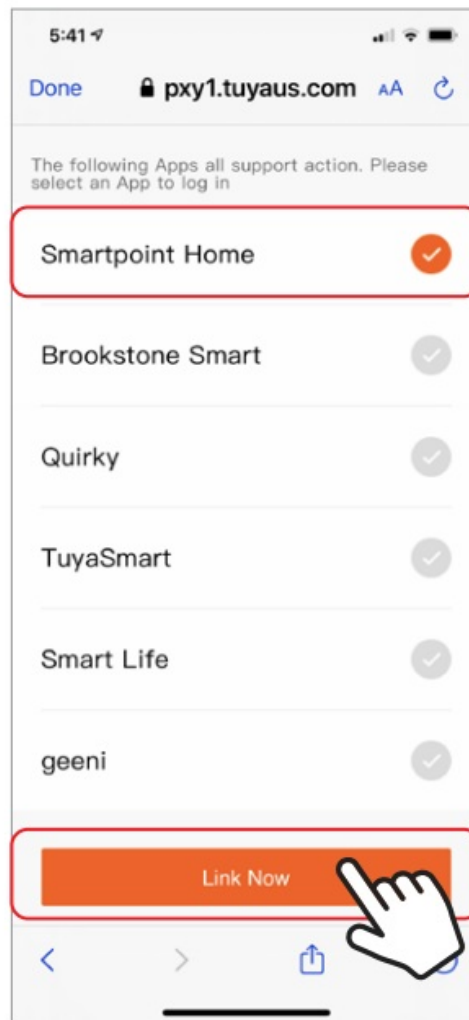
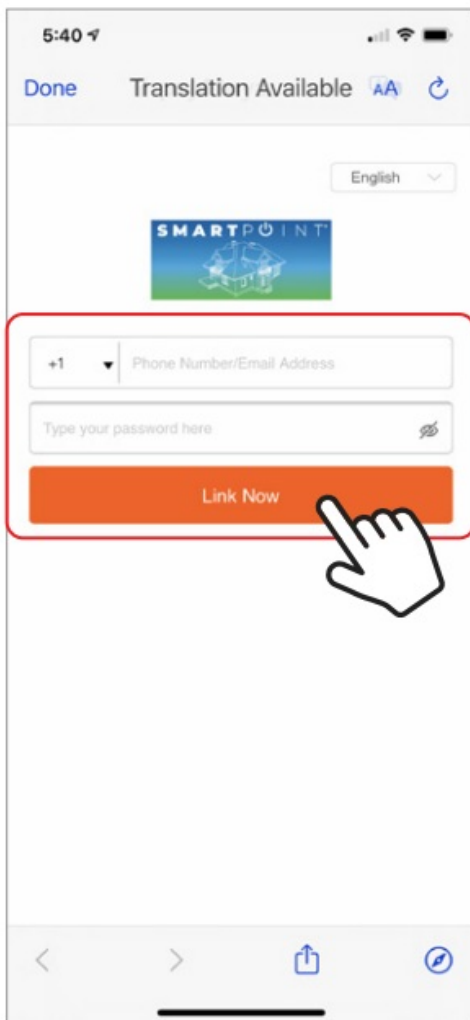
Step B. On the next page press "Set up device", and then on the page after that select "Works with Google".



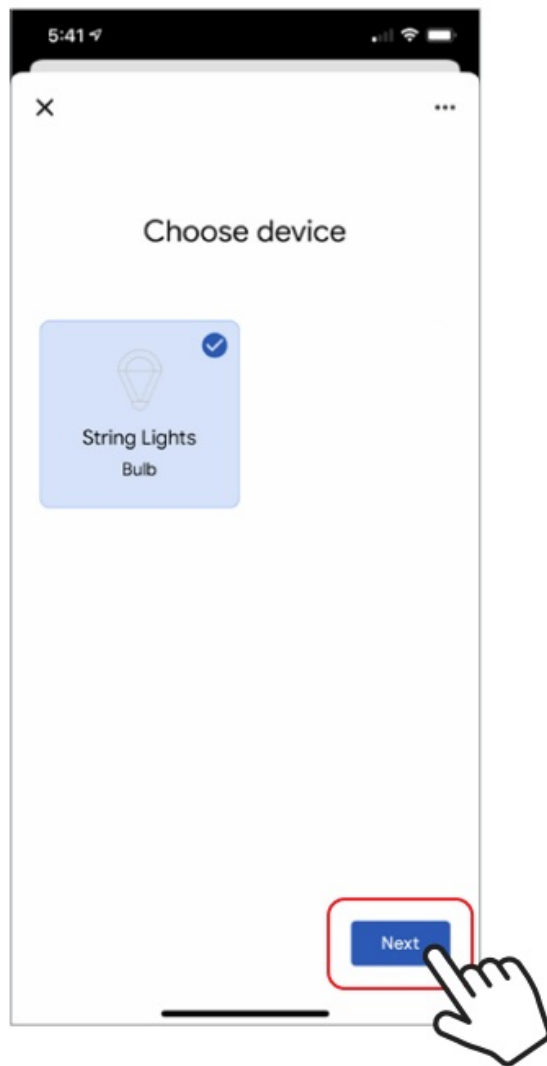
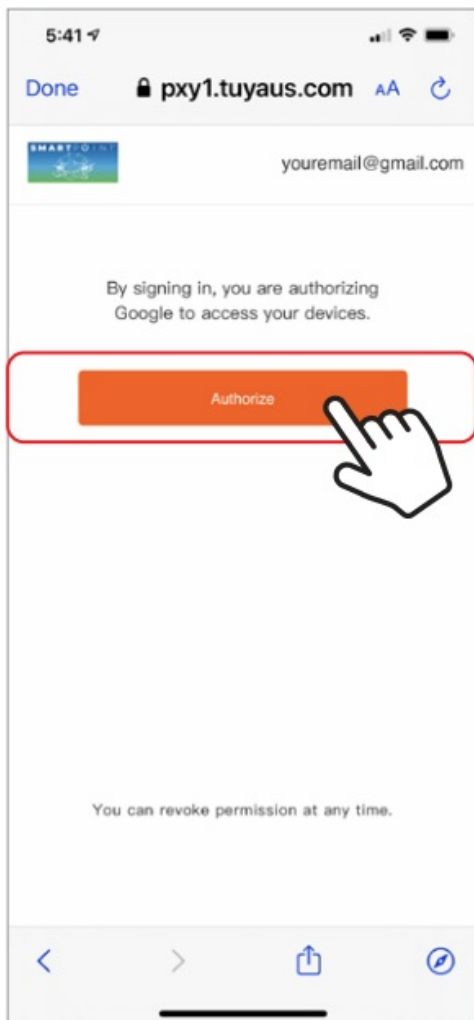
Step C. Press the magnifying glass icon to type in the app you would like to link to your Google Home account. In this case, type in "Smartpoint Home" and then select it from the list below.



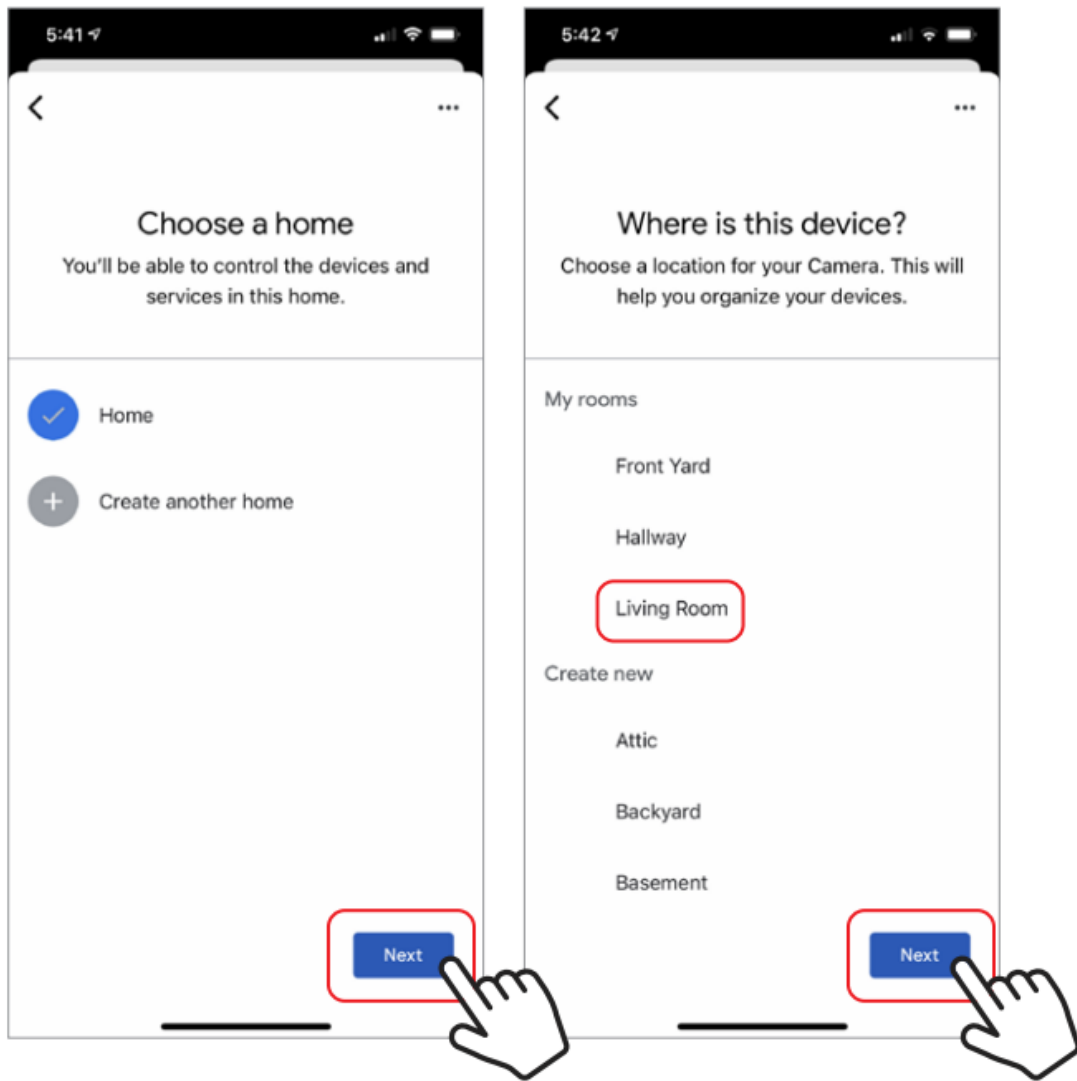
Step D. Enter your account info for the “Smartpoint Home” app, tap “Link Now”. On the next page select the correct app to link and then press “Link Now” again.



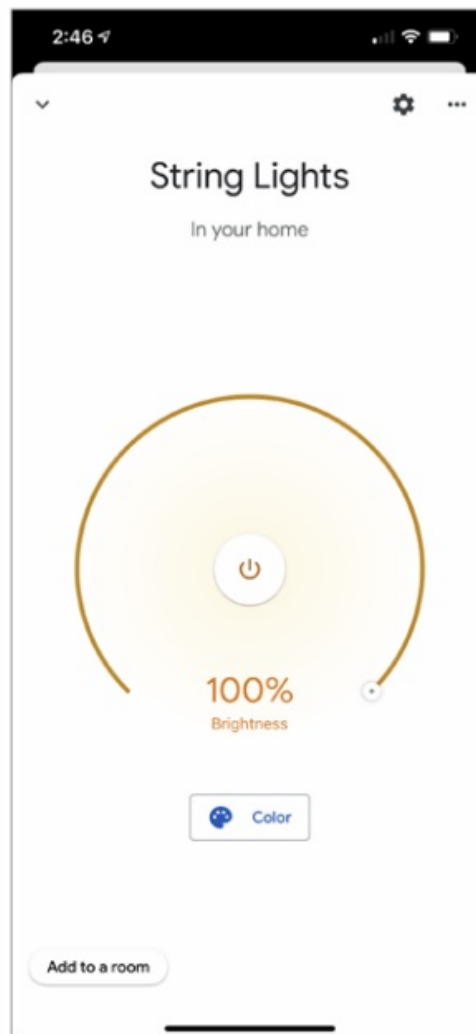
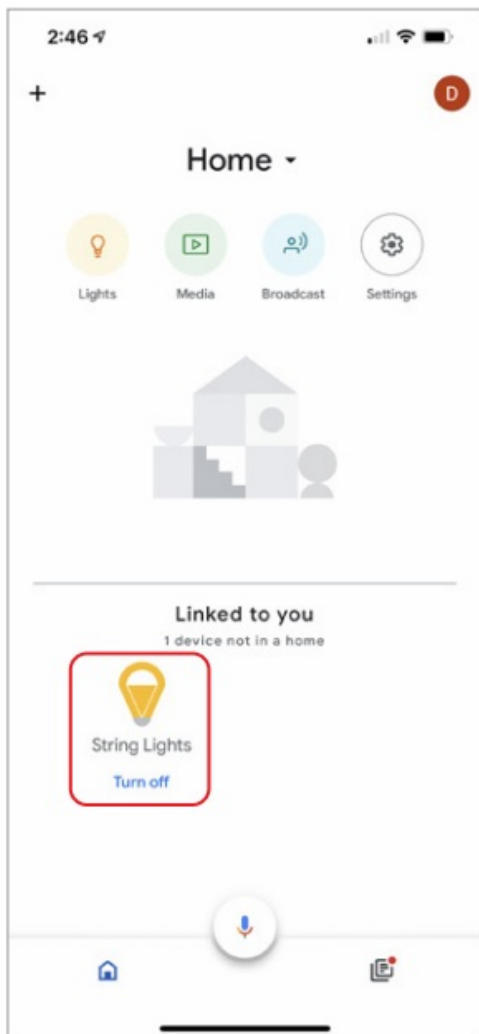
Step E. Tap “Authorize” on the next page to link your Smartpoint Home Account with Google Assistant. After that you will see any devices that are connected to your Smartpoint Home App. Choose the device you would like to add to the Google Home App and press “Next”.



Step F. Select the home you would like the device to be linked to and then select which room you would like the assign it to.



Step G. Your device is now linked to your Google Home App. You can now control it through the Google Home App on your phone or through a Google Assistant-enabled speaker.



Step H. You also are able to control the String Lights via Google Assistant with your voice.

Just start with “Hey Google”.

“Turn on String Lights”

“Turn off String Lights”

Note: The device name is the one you give to the lights on the “Smartpoint Home” App . Let’s name it “Living Room”.

For example:

“Turn on Living Room”

“Turn off Living Room”

SPECIFICATIONS

- **Model:** SPSLEDLTS-30
- **Color:** RGBW
- **Power supply:** USB
- **Input Voltage:** 5V 2A
- **Control method:** Remote/Phone App/Control Box
- **Operating Temperature:** -13°F – 140°F
- **Wireless type:** Wi-Fi 2.4GHz

- **Wireless Standard:** IEEE 802.11b/g/n

FCC Statement

This device complies with Part 15 of the FCC Rules. Operation is subject to the following two conditions:

1. This device may not cause harmful interference, and
2. This device must accept any interference received, including interference that may cause undesired operation.

Caution: The user is cautioned that changes or modifications not expressly approved by the party responsible for compliance could void the user's authority to operate the equipment.

Note: This equipment has been tested and found to comply with the limits for a Class B digital device, pursuant to part 15 of the FCC Rules. These limits are designed to provide reasonable protection against harmful interference in a residential installation. This equipment generates uses and can radiate radio frequency energy and, if not installed and used in accordance with the instructions, may cause harmful interference to radio communications. However, there is no guarantee that interference will not occur in a particular installation. If this equipment does cause harmful interference to radio or television reception, which can be determined by turning the equipment off and on, the user is encouraged to try to correct the interference by one or more of the following measures:

- Reorient or relocate the receiving antenna.
- Increase the separation between the equipment and receiver.
- Connect the equipment into an outlet on a circuit different from that to which the receiver is connected.
- Consult the dealer or an experienced radio/TV technician for help.

This equipment complies with FCC radiation exposure limits set forth for an uncontrolled environment. This equipment should be installed and operated with a minimum distance of 20cm between the radiator and any part of your body.

For more products please visit www.smartpointco.com



FCC ID: 2AKBP-MSL8V2

WARRANTY INFORMATION

One Year Limited Warranty.

Customer Service: help@smartpointco.com

Manufactured, marketed and distributed by Smart point LLC, under license.

Amazon, Alexa and all related logos are trademarks of Amazon.com, Inc. or its affiliates.

Google, Android, Google Play and Google Home are trademarks of Google LLC.

App Store® is a registered trademark of Apple, Inc.


All trademarks and registered trademarks are property of their respective owners.

©Smartpoint LLC,



250 Liberty Street, Suite 1A

Metuchen, NJ 08840

Documents / Resources

	<p>SMART POINT SPSLEDLTS-30 Smart Indoor LED String Lights [pdf] User Manual SPSLEDLTS-30, Smart Indoor LED String Lights, SPSLEDLTS-30 Smart Indoor LED String Lights</p>
---	---

References

-  [Amazon.com. Spend less. Smile more.](#)
-  [Smartpoint LLC](#)