



---

# Smart Lock 01-3 Life Std Smart Door Lock Instruction Manual

June 3,  
2025

## Contents [ [hide](#) ]

### 1 Smart Lock Manual

#### 1.1 Packing List

#### 1.2 Door Preparation

#### 1.3 Installation Diagram

#### 1.4 Product Profile

#### 1.5 Features

#### 1.6 App Operation Guide

##### 1.6.1 Pair the Lock with Tuya App

###### 1.6.1.1 1. Tuya App Installation and Account Registration

###### 1.6.1.2 2. Pair the lock

##### 1.6.2 Lock's Operation on App

###### 1.6.2.1 1. Member Management

###### 1.6.2.2 2. Settings

###### 1.6.2.3 3. Unlocking Records

##### 1.6.3 Operation Instructions

###### 1.6.3.1 1. UNLOCK

###### 1.6.3.2 2. LOCK

##### 1.6.4 Reset (System initialization)

### 2 Documents / Resources

#### 2.1 References

# Smart Lock Manual



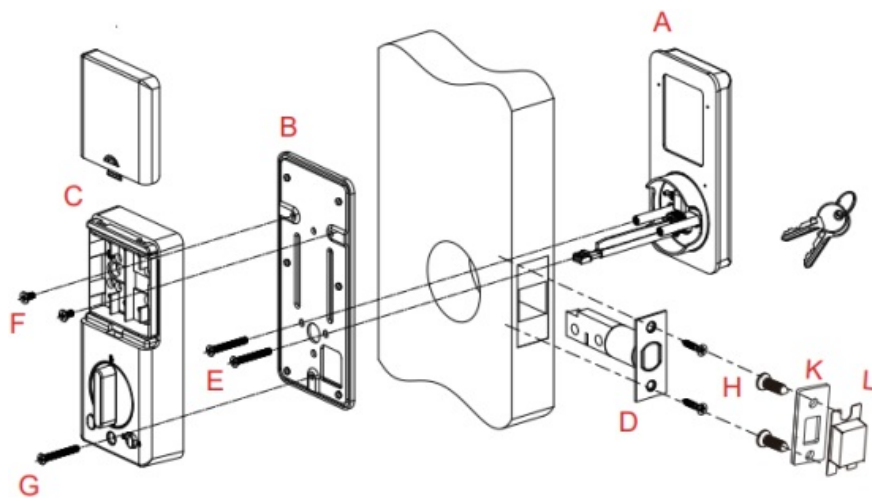
Note:

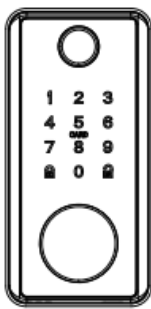

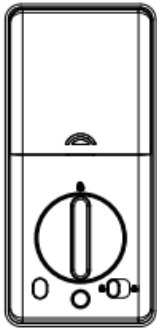
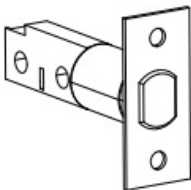


1. This lock is equipped with mechanical keys for manual unlocking. Take out mechanical keys from the package and keep them in a safe place and always have access to them.
2. To power on the lock, four alkaline AA batteries (not included) are required. Non-alkaline and rechargeable batteries ARE NOT RECOMMENDED.
3. This lock is used outdoors and indoors, it is designed to be exposed to direct sunlight or rain. The waterproof rating: IP54.
4. Keep your fingers clean when using this lock.

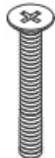


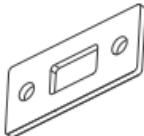
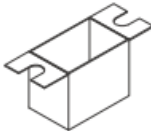
Please read this manual before operating your Smart Lock, and keep it for further reference.

## Packing List

---



<p><b>A</b></p>  <p>Front panel 1 Piece</p>	<p><b>B</b></p>  <p>Mounting plate 1 Piece</p>	<p><b>C</b></p>  <p>Back panel 1 Piece</p>
<p><b>D</b></p>  <p>Deadbolt 1 Piece</p>	<p><b>E</b></p>  <p>M4 x 30mm 2 Piece</p>	<p><b>F</b></p>  <p>M4 x 8mm 2 Piece</p>

<p><b>G</b></p>  <p>Black color M4 x 30mm 2 Piece</p>	<p><b>H</b></p>  <p>M4 x 25mm 4 Piece</p>	<p><b>J</b></p>  <p>Mechanical keys 2 Piece</p>
<p><b>K</b></p>  <p>Strike plate 1 Piece</p>	<p><b>L</b></p>  <p>Latch holding box 1 Piece</p>	

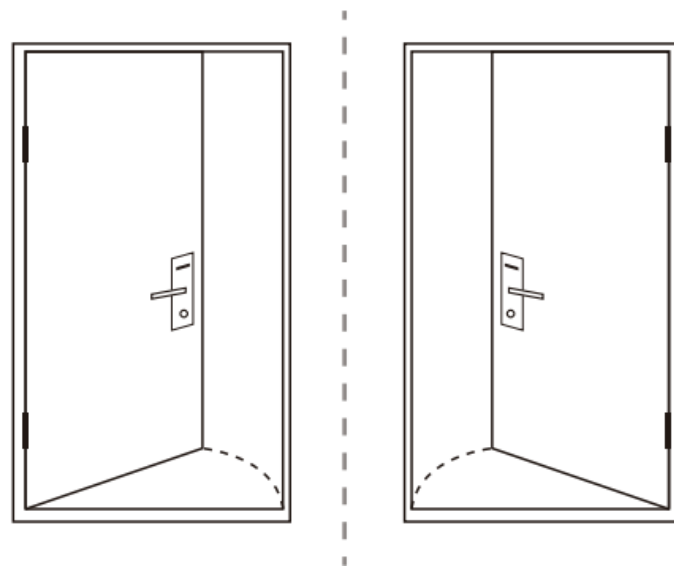
## Door Preparation

---

1. Check door thickness and Door Frame.

- Door frame  $\geq$  (110mm)
- Door thickness: (38-48mm)

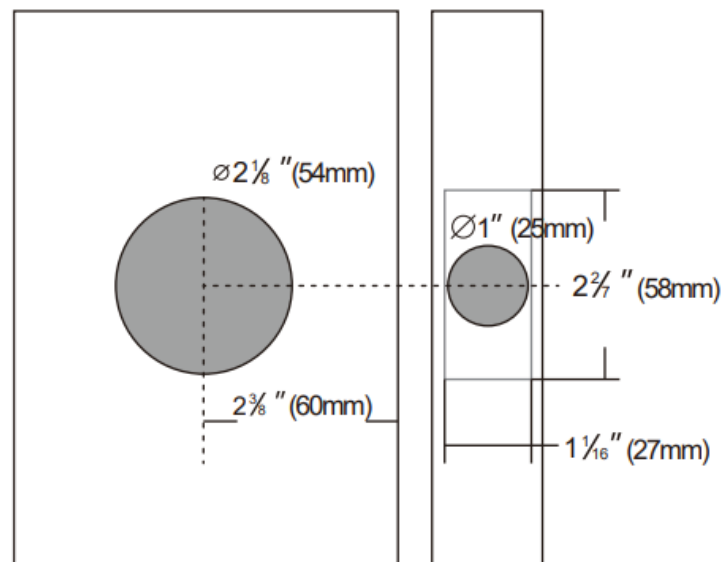
2. Check door open direction.



Left open

Right open

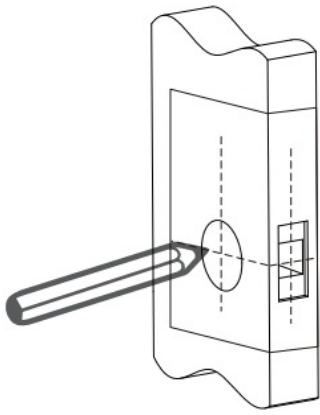
Door drill hole map



## Installation Diagram

---

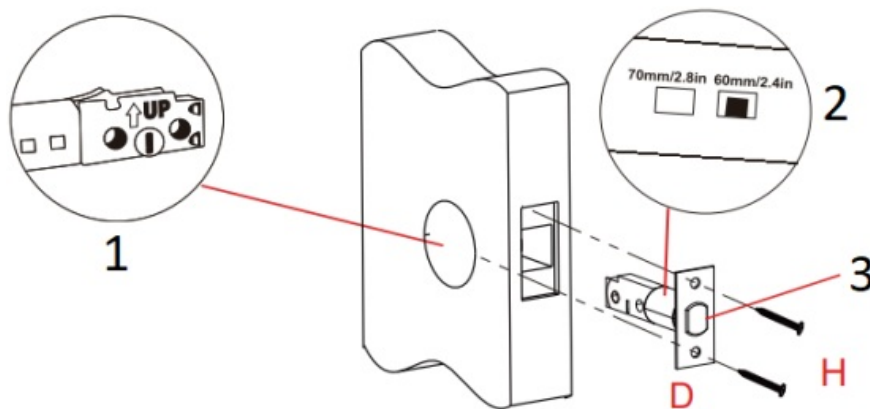
### Step 1 Drilling holes



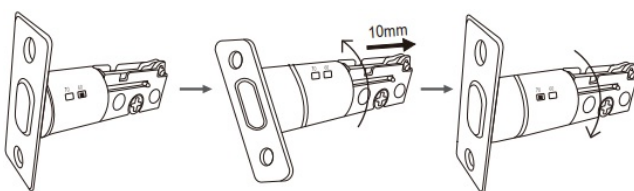
• Note:

- 1) Check the required backset (60mm or 70mm).
- 2) Align the template along the vertical center line of the deadbolt(D) at the desired height, and tape it to the door.
- 3) Mark the holes first, then start drilling.

**Step 2** Install the deadbolt (D)

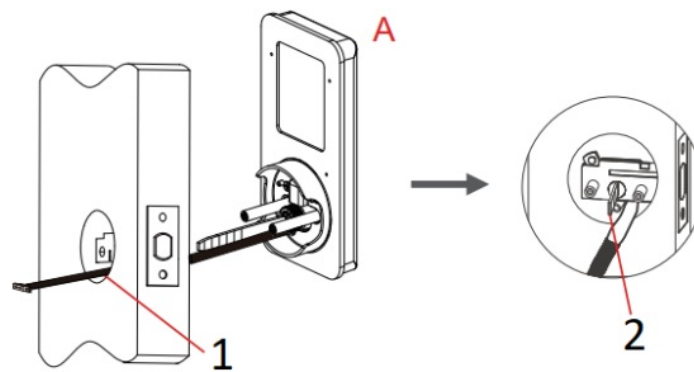


1. • Check that the **UP** mark is facing upwards before inserting the deadbolt into the hole.
2. • The deadbolt has Two backset options: 60mm(2.4in) or 70mm (2.8in), you can adjust it according to the door hole.
3. • DO NOT Push the latch out during installation.



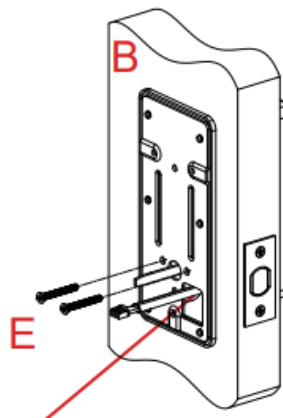
Note: To change deadbolt from 60mm to 70mm, twist the barrel clockwise, pull it out, and then twist anti clockwise to lock into the 70mm position.

### Step 3 Install front panel (A)

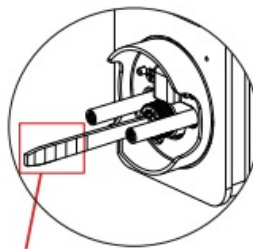


1. • The cable goes underneath the deadbolt.
2. • Keep the spindle vertical.

### Step 4 install mounting plate (B)

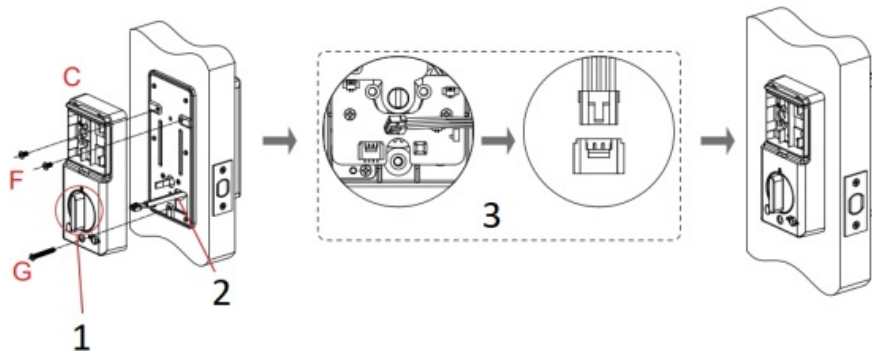


- Note: The cable goes through the notch on the lower right part of the mounting plate.



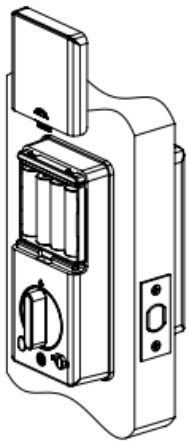
- The spindle can be cut if necessary for thinner doors.

### Step 5 Connect the cable and install back panel(C)

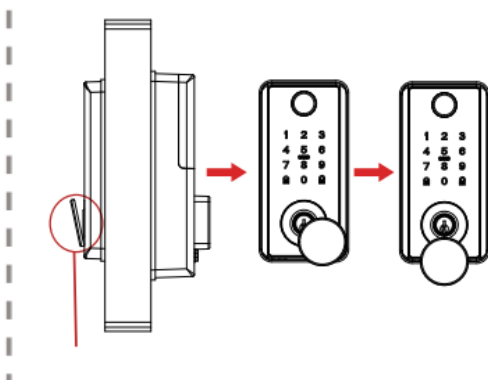


1. Note: Keep the knob **VERTICAL** when installing back panel.
2. Tuck overlong cable into the door.
3. Connect the cable

### Step 6 Install 4 AA Alkaline batteries and test the lock manually



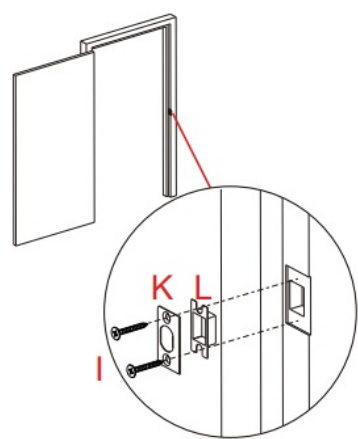
- Install 4 x AA Alkaline batteries. After installing batteries, the lock will automatically recognize left or right opening to match the door. You don't need to manually set the left or right opening for the lock on app or through other ways.  
Test the lock manually by rotating the knob on back panel or using mechanical key to confirm smooth unlocking/locking before using the lock.



Open the cover of key hole, insert the key to test the lock.



**Step 7** Mark and drill holes for strike plate



**Product Profile**

Material	Aluminum	
Door Thickness	38mm~48mm	
Working Temperature	-30℃~70℃	
Working Power Consumption	<250mA	
Model NO.	2404C	
Code Length	6~10 digits	
Working Humidity	20%~80%RH	
Static Power Consumption	<60uA	
Power Supply	6V (4 x AA Alkaline Batteries not included)	
Unlocking Methods	Fingerprint, App, Card, Passcode & Mechanical Key	
User Capacity	150 passcode users, 100 card users, 100 fingerprint users	
	Front	68(W) x 139(H) x 16(D) mm

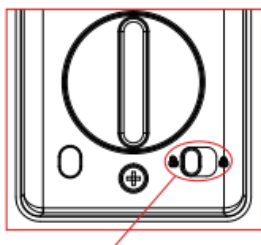
Product Dimension	Back	74(W) x 160(H) x 44(D) mm
-------------------	------	---------------------------

★ All specifications are subject to change without notice. All rights reserved.

## Features

---

- **Lock's Administrator:** After pairing the lock with Tuya App on your phone, your phone becomes the administrator of the lock.
- **Bluetooth Key:** After pairing the lock, turn on Bluetooth on your phone, open App, unlock the lock via your phone. (The phone should be within 10 meters from the door lock)
- **Authorized Remote Passcode:** Administrator can from anywhere remotely send permanent or temporary passwords to others.
- **Randomizer:** Before you enter your passcode, you can push some random numbers to prevent the passcode from being inferred based on the fingerprints on the frequently pushed numbers and from being seen by anyone nearby.
- **Auto-lock:** The lock is auto-lock for default. It'll lock automatically 10 seconds after unlocking. You can refer to "Auto-lock & Passage Mode" on page 11 to know more about this function.
- **Low Power Consumption:** 4 x AA alkaline batteries can be unlocked about 8000 times (About 12 months).
- **Low Power Alarm:** When batteries power is low, the lock will emit an alarm sound. The App interface will display the real-time power level. When the battery is dead, you can use a Type-C cable to connect a backup battery or a mechanical key to temporarily unlock the lock.
- **Real Time Record:** You can check unlock records on your App.
- **Anti-lock:** There is a Anti-lock switch below the knob on back panel. When anti-lock is enabled, all fingerprint/card/password will be invalid. Mechanical key and App can still be used to unlock.



Slide to :Anti-lock enable

Slide to :Anti-lock disable

## App Operation Guide

---

**Important reminder: Pls pair the lock with Tuya App before using the lock.**

Under initialization mode, the lock can be unlocked by any fingerprint/card or initial code 123456.

### Pair the Lock with Tuya App

#### 1. Tuya App Installation and Account Registration

1.1. Scan the QR code to download, or search the “**Tuya Smart**” App from Google play store or Apple store on your phone.

1.2. Install and register an Tuya account with your phone number or email.

Note: If you have already registered an Tuya account, just log in with this account.



Scan the QR code to download the App

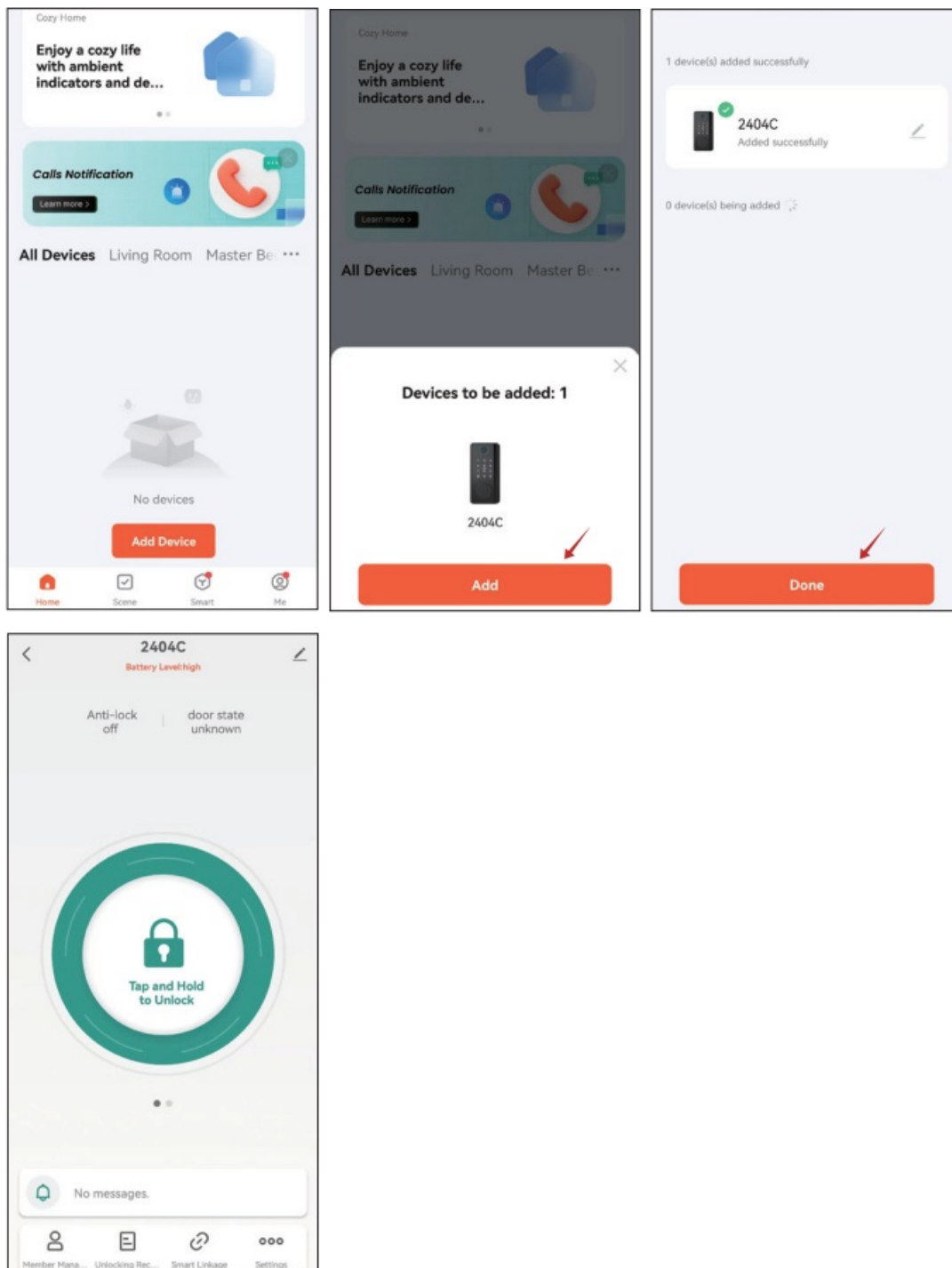
#### 2. Pair the lock

2.1. Turn on the Bluetooth on your phone.

2.2. Open Tuya Smart App, touch the screen of lock to activate the keyboard.

2.3. App will automatically search and display device that can be added within about 10 seconds.

When you see the device(named “2404C”), click “Add”, and then click “Done”, the lock will be added successfully. You can rename the lock




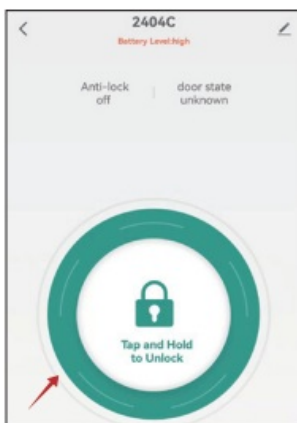
**Note:**

- After successfully pairing, you can set fingerprint / card / password on Tuya App.
- If you do not find the lock on App when pairing, you can reset the lock first (please see “Reset (System initialization)” on page 12).
- Once your phone App connects the lock , the lock will not be able to link to other accounts, unless you disconnect the lock from your App.

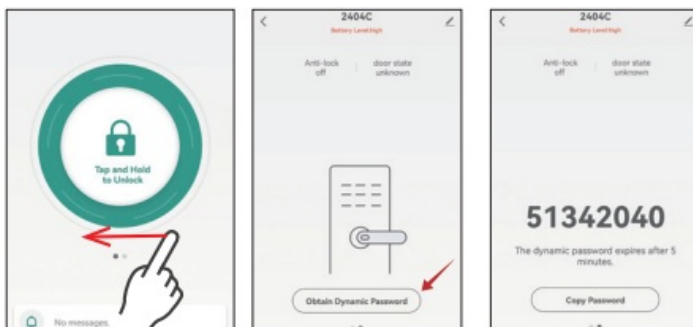
You can also add the lock manually: Turn on the Bluetooth on your phone – Open Tuya App – click “Add device” – “Camera & Lock” – click the icon “Lock(BLE)” – “Next” – touch to activate the lock’s keyboard, App will search and add the lock automatically – finally click “Done”.


## Lock’s Operation on App

Tap and hold the icon  to unlock or swipe left to obtain Dynamic Password on the lock’s interface to unlock.



Swipe left to obtain dynamic password

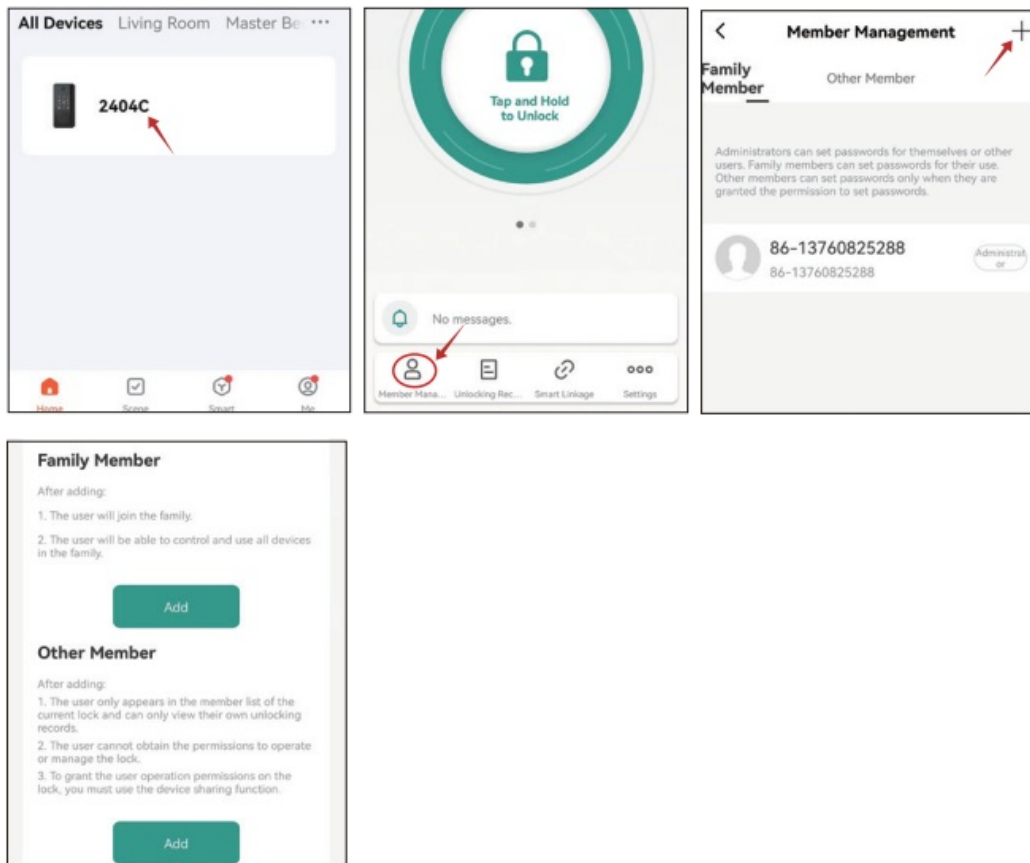


Note: When you unlock the lock with password, please press  key after entering the password.

### 1. Member Management

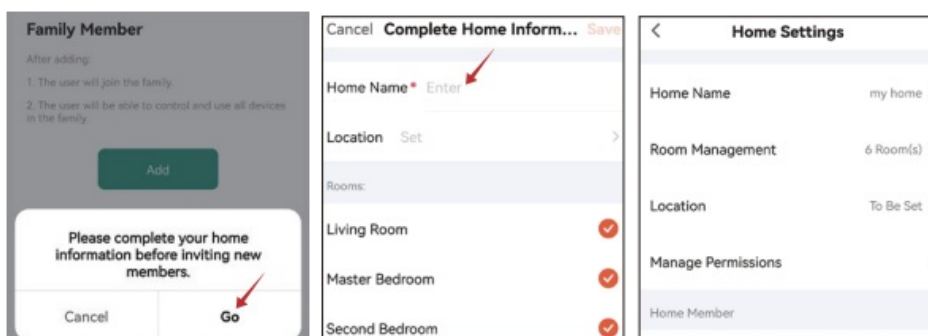
If you set your own fingerprint/card/password for unlocking, you can skip “Member Management” and refer to “Setting” on page 9 to directly set for yourself.

There are Family Member and Other Member in Member Management.

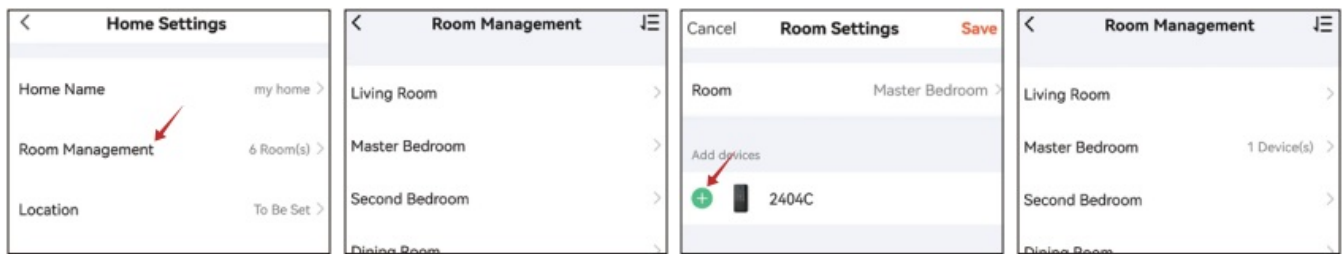


## 1.1. Family Member

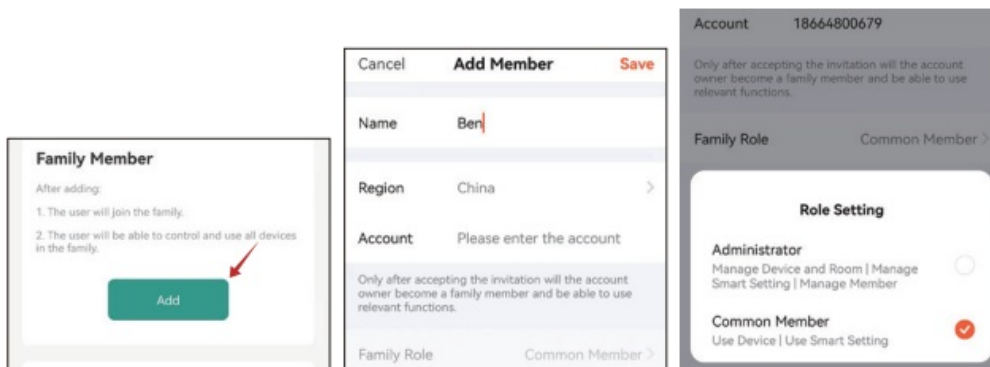
You can add family member as **Administrator** or **Common Member**. You should complete home information before adding family members.



You can add the lock to corresponding room.



Add Family Member as below, after completing home information. Family member can be added as **Administrator** or **Common member** for family role. The role can be select when you enter member's account. Once added, the permission of family member is permanent until they are removed.

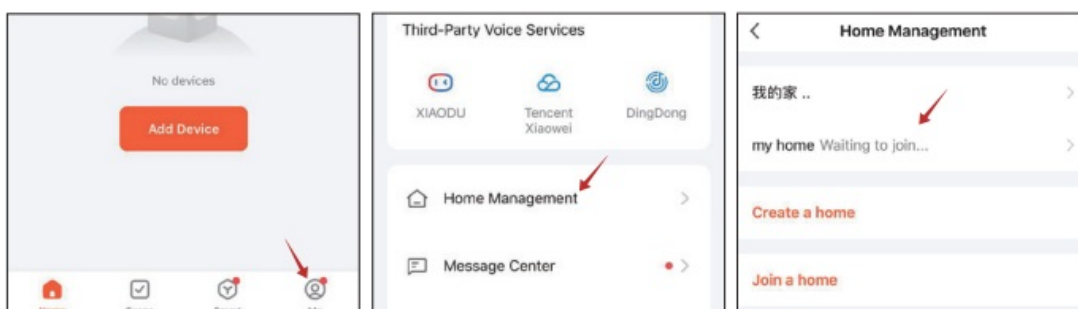


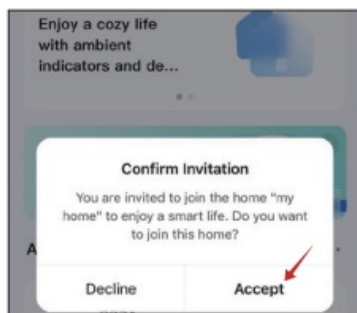
– **Administrator:** manage device and room, manage smart setting, manage member. If family member is set as administrator, this administrator need to have a Tuya account.

Administrators can set fingerprint for themselves, common members or other members.

-**Common Member:** only use device, use smart setting. Common members don't need to have Tuya account.

-When binding Tuya account of family member (administrator or common member), an invitation will be sent to the Tuya account, the account will become family member and be able to use relevant App functions of this lock after accepting the invitation(accept the invitation as below) .

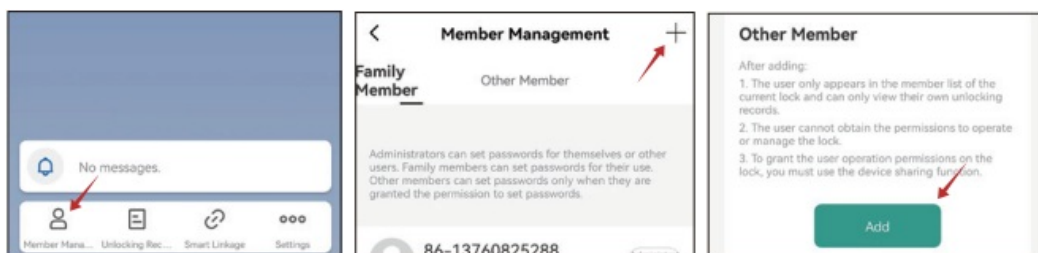




## 1.2. Other Member (for example, visitor)

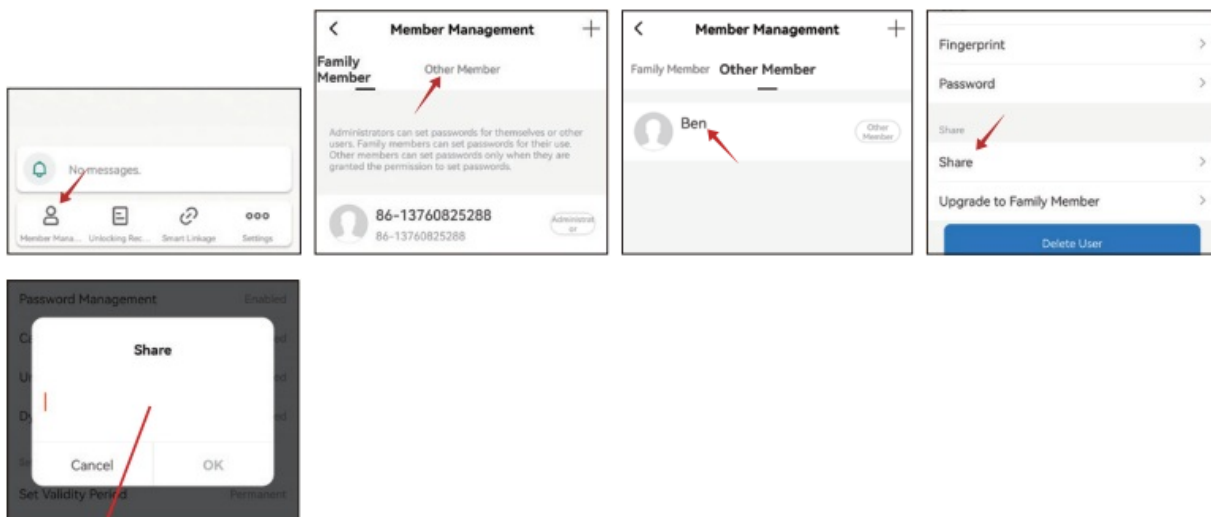
-Other members don't need to have Tuya account. They can unlock the lock via fingerprint/card/password or mobile phone after obtaining the permissions from administrator.

-Validity: valid period of permission can be set to be permanent or timed by Administrator.



If the member has Tuya account, the account can be bound by administrator to use share function.

The member can unlock the lock via App or set his/her own fingerprint/card/password on App.

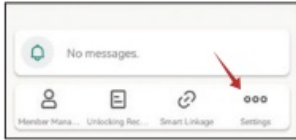




1. Enter member's Tuya account

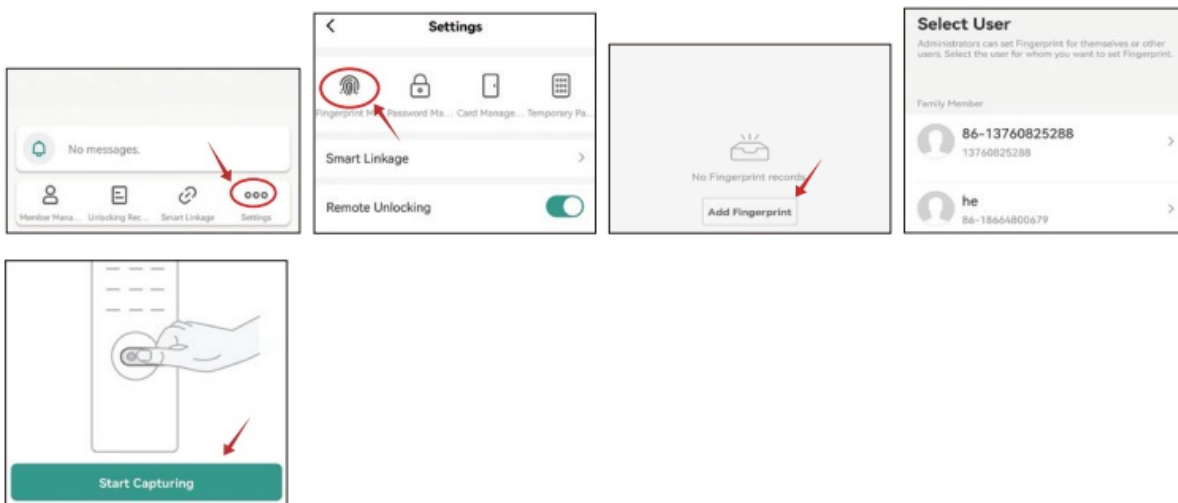
## 2. Settings

Fingerprint/card/password for unlocking, passage mode, and lock's volume can be set here.



### 2.1. Fingerprint Setting

Set fingerprint by following steps: Fingerprint Management – Add Fingerprint – Select User – Start Capturing – Place finger on recognition area of lock (need to repeat several times) Name it & click Done



#### Warm tips:

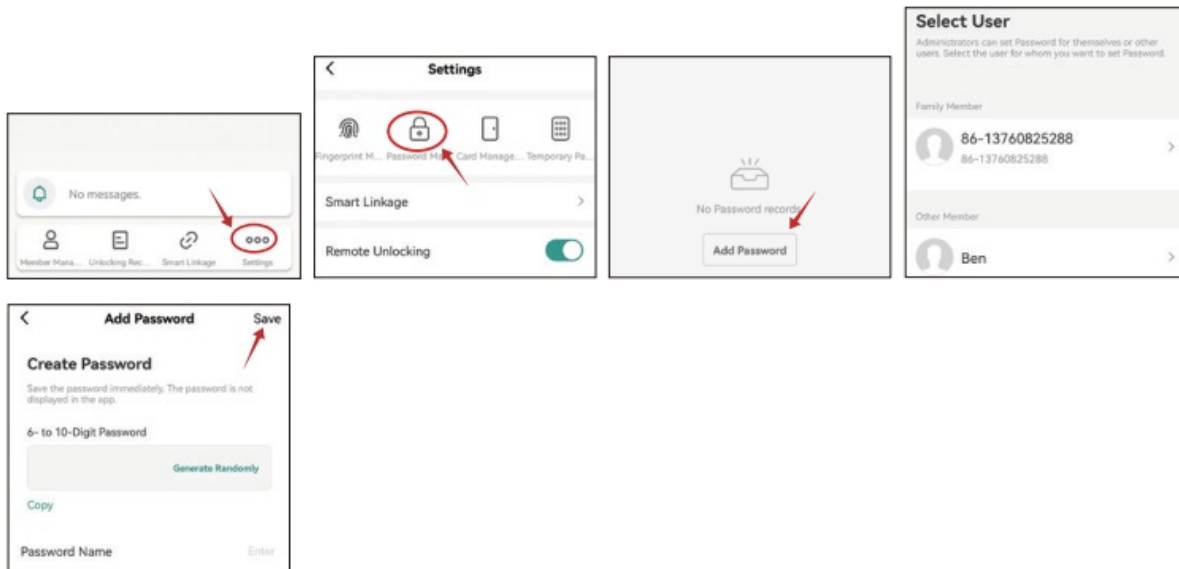
Please record multiple fingerprint angles as the picture shown, so that the recognition flexibility will be increased by more than 99.9%.

Notes:

1. Use the belly of fingers to record, not fingertip.
2. The same fingerprint need to be scanned from multiple angles.
3. The same user can scan multiple fingerprints.
4. Please keep your fingers clean and not too dry or wet.

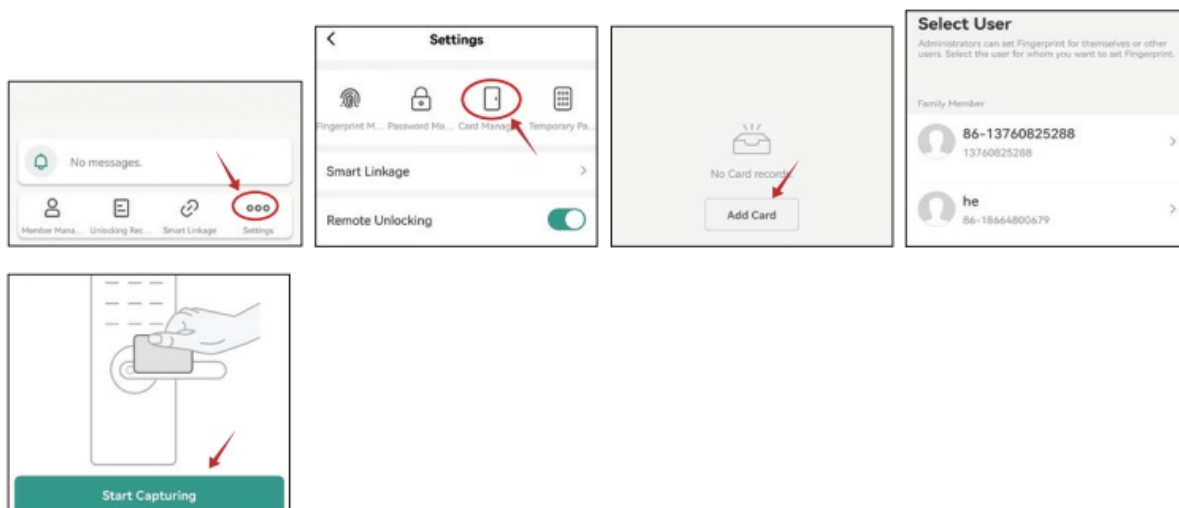
## 2.2. Password Setting

Set password by following steps: Password Management – Add Password – Select User – Create Password(6-10 digit) – Name it & click Save



## 2.3. Card Setting

Set card by following steps: Card Management – Add Card – Select User – Start Capturing – place the card on lock's keyboard – Name it & click Save



## 2.4. Temporary Password

– Online Password (Need to be near the lock when setting)

Bluetooth should be turn on when you set the online password. The password can be customized or random password.

One-Time Password: The password can be used only once before it expires.

Periodic Password: The password can be used multiple times before it expires.

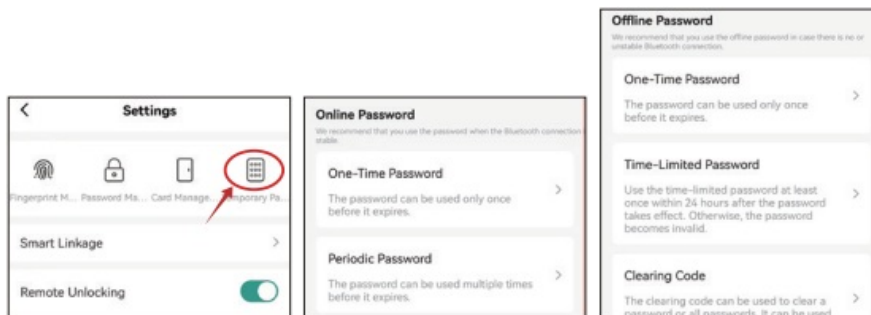
– Offline Password (Need not be near the lock when setting)

Bluetooth does not need to be turned on when you set the offline password. The password will be created randomly.

One-Time Password: The password can be used only once before it expires.

Time-Limited Password: The password should be use at least once within 24 hours after it takes effect. Otherwise, the password will becomes invalid.

Clearing Code: It can clear a password or all passwords. It can only be used once.



## 2.5. Auto-lock & Passage Mode

-The lock is auto-lock for default. It will lock automatically 10 seconds after unlocking.

-Passage mode, the lock will not lock automatically after unlocking when passage mode is on.

Passage mode will be enable when “automatic lock switch” is turned off.



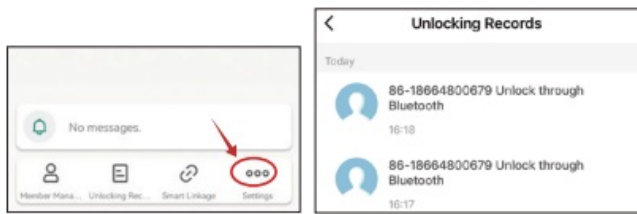
## 2.6. Lock's volume

There are 4 grades of volume: High(for default) / Normal / Low / Mute.





### 3. Unlocking Records

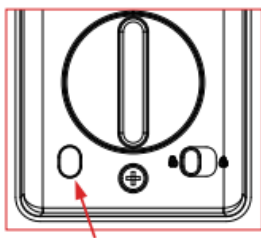
To view unlocking records.(Need to be near the lock)



## Operation Instructions

### 1. UNLOCK




- 1.1. Via Tuya App: Tap and hold the icon  on App to unlock.(Need to be near the lock)
- 1.2. Via fingerprint: Place a valid fingerprint on fingerprint reader to unlock.
- 1.3. Via card: Place a valid card on middle of lock's keyboard to unlock.
- 1.4. Via password: Enter password and press  on lock's keyboard to unlock.
- 1.5. Via knob: Manually twist the knob on back panel to unlock.
- 1.6. Via reset button: Short press the reset button on back panel to unlock.
- 1.7. Via key: Open the cover of keyhole on the front panel, then insert the key to unlock.



Reset button

### 2. LOCK

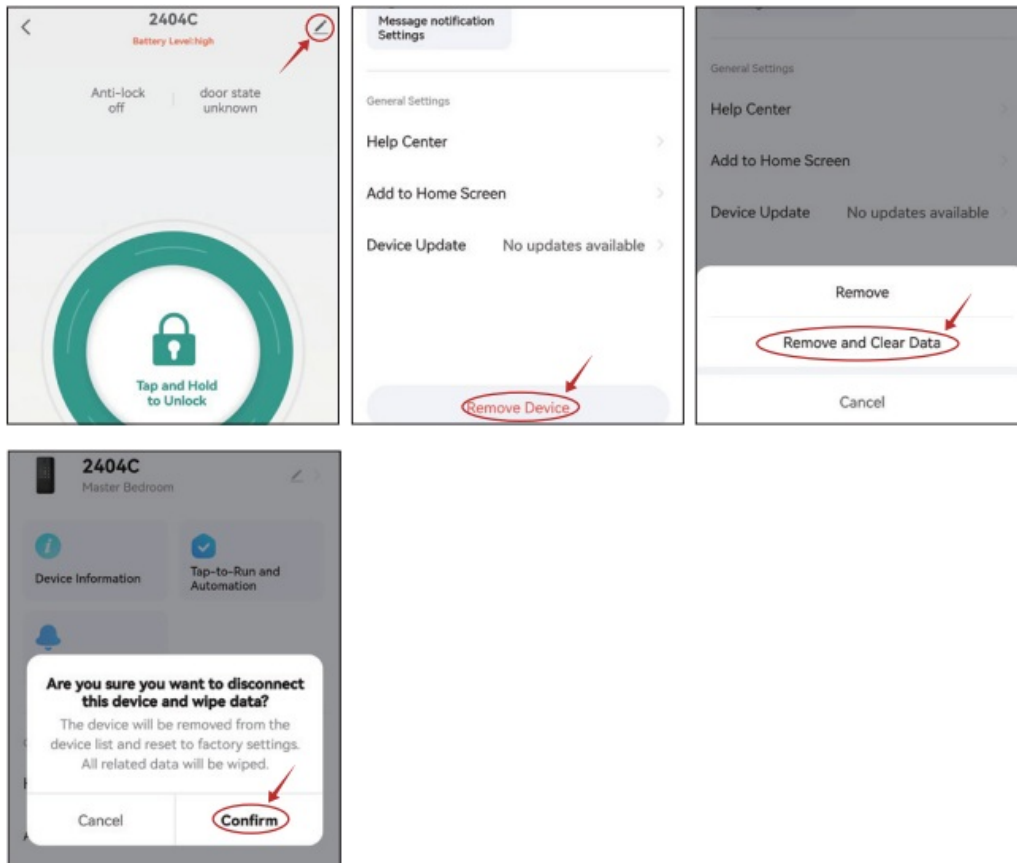
The lock is auto-lock for default, it will lock automatically 10 seconds after unlock. You can quickly close the lock by any of following methods when auto-lock is turned off.

- 2.1. Via Tuya App: Tap and hold the icon  on App to lock.(Need to be near the lock)
- 2.2. Via  key: Short press the  key on lock's keyboard to lock.
- 2.3. Via knob: Manually twist the knob on back panel to lock.
- 2.4. Via reset button: Short press the reset button on back panel to lock.
- 2.5. Via key: Open the cover of keyhole on the front panel, then insert the key to lock.

## Reset (System initialization)

### Method 1:

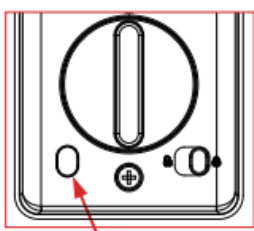
If the lock has been paired with App, just remove the lock from your phone App, then the voice prompts “initialize successfully”. (Your phone should be near the lock.)



### Method 2:

The lock can be reset on the lock by following steps.

1. Remove one of the batteries.
2. Keep pressing the reset button without releasing, and put the battery back.
3. When hearing four consecutive beeps, release your finger from reset button, then the voice prompts “initialize successfully”.



Reset button


(on back panel below the knob)

Note:

-All of the fingerprint / password / card / App users will be deleted after reset. The lock will be restored to initialization mode, and can be unlocked by any fingerprint/card or code 123456.

-If you have already paired the lock with Tuya App, when you reset the lock by method 2, you need to remove the lock on App before you pair it again.

## Documents / Resources

	<a href="#">Smart Lock 01-3 Life Std Smart Door Lock [pdf]</a> Instruction Manual 01-3 Life Std Smart Door Lock, 01-3, Life Std Smart Door Lock, Smart Door Lock, Door Lock
---	--

## References

- [User Manual](#)

SMART LOCK

01-3, 01-3 Life Std Smart Door Lock, Door Lock, Life Std Smart Door Lock, Smart Door Lock, Smart Lock

## Leave a comment

Your email address will not be published. Required fields are marked \*

Comment \*

Name

Email

Website

☐ Save my name, email, and website in this browser for the next time I comment.

Post Comment

Search:

e.g. whirlpool wrf535swhz

Search

[Manuals+](#) | [Upload](#) | [Deep Search](#) | [Privacy Policy](#) | [@manuals.plus](#) | [YouTube](#)

This website is an independent publication and is neither affiliated with nor endorsed by any of the trademark owners. The "Bluetooth®" word mark and logos are registered trademarks owned by Bluetooth SIG, Inc. The "Wi-Fi®" word mark and logos are registered trademarks owned by the Wi-Fi Alliance. Any use of these marks on this website does not imply any affiliation with or endorsement.