



Smart Life Echo To Control Smart Devices App User Guide

Smart Life Echo To Control Smart Devices App User Guide

[Home](#) » [Smart Life](#) » Smart Life Echo To Control Smart Devices App User Guide 

Smart Life Echo To Control Smart Devices App



Smart Life Echo To Control Smart Devices App User Guide

Contents

- [1 What you need to get started](#)
- [2 Add devices in Smartlife-SmarHome \(Refer to App Instruction\)](#)
- [3 Setup Amazon Echo and enable Smartlife-SmarHome Skill](#)
- [4 Control your smart devices through Echo](#)
- [5 Documents / Resources](#)
 - [5.1 References](#)
- [6 Related Posts](#)

What you need to get started

Before using Echo to control your smart devices, make sure you meet the following conditions.

- Stable Wi-Fi network which could access to Amazon server. (For mainland China users)
- An Echo device, including Echo, Echo Tap, or Echo Dot.
- An Amazon account. (If you don't have one, sign up first)o
- Smartlife-SmarHome app and a related account.
- Make sure there's at least one device under your Smartlife-SmarHome account, and the device's name could be easily recognized by Echo.

Add devices in Smartlife-SmarHome (Refer to App Instruction)

You can skip this part if you've already add some devices to your SmartLife-SmarHome account, and in the meantime the devices' name are easily recognized.

Download Smartlife-SmarHome (Refer to App Instruction)

You can scan the QR code below to download the Smartlife-SmarHome app:

You can also search "Smartlife-SmarHome" in either App Store or Google Play to install the app.



SmartLife-SmarHome



Register a Smartlife-SmartHome account and sign in the app (Refer to App Instruction)

Open the Smartlife-SmartHome app, tap “Register” to register an account, then sign in the app.

Add device and change device’s name (Refer to App Instruction)

Sign in with the Smartlife-SmartHome account, add the device, then change device name to a easily recognized word or phrase, like” Air conditioner or Dehumidifier”.

Setup Amazon Echo and enable Smartlife-SmartHome Skill

- We suggest using web for configuration in mainland China since Alexa app is not available here.
- User can configure Echo through web or Alexa app.
- Web configuration link: <http://alexa.amazon.com/spa/index.html>
- Download Alexa app: [Alexa Alexa](#)
- iOS version download: [App Store](#)
- Android version download: [Google Play](#)
- We take app configuration as an example. Configuration through web and app are basically the same.

Set up Echo with Alexa app

You can skip this part if your Echo is already set up.

1. Make sure your Echo device is energized.
2. Make sure there’s a stable Wi-Fi network which could access to Amazon server.
3. Follow the Alexa App guider to set up Echo with Alexa **Fig 01**

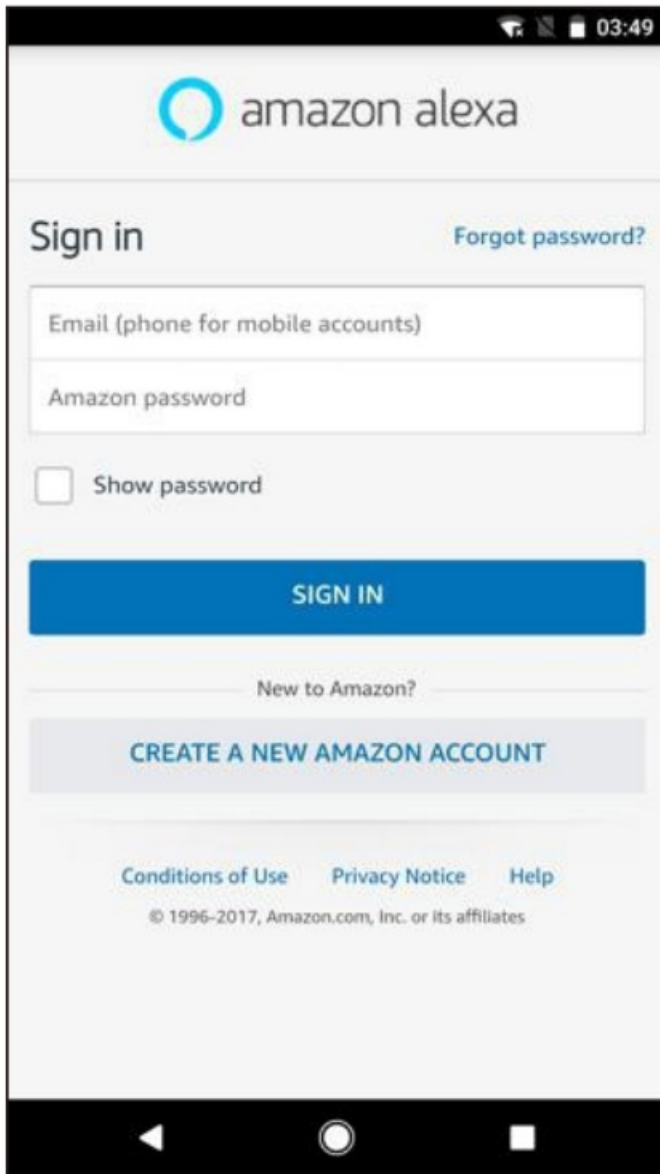


Fig.01

Link Smartlife-SmartHome account to Echo

1. Tap "Skills" in the hamburger menu, then search "Smartlife-SmartHome ". Select "Smartlife-SmartHome" and tap "ENABLE" to enable the Skill. **(Fig.02)**

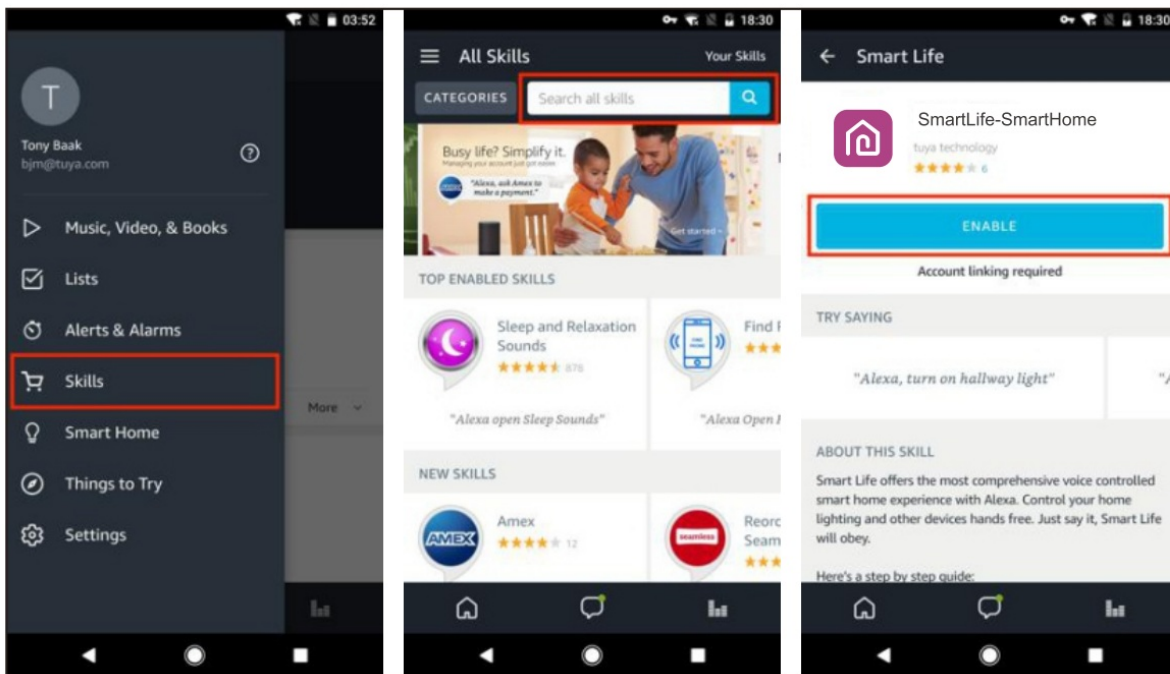


Fig.02

- You will be redirected to the account link page. Type in your Smart Life account and password, don't forget to select the country/region where your account belongs to. Then tap "Link Now" to link your Smartlife-SmartHome account. The country/region, the account, and the password must match with the exact content in Step 2.2 when you registered the account. When "Alexa has been successfully linked with Smart Life" shows up, tap K on the top left corner. (Fig.03)

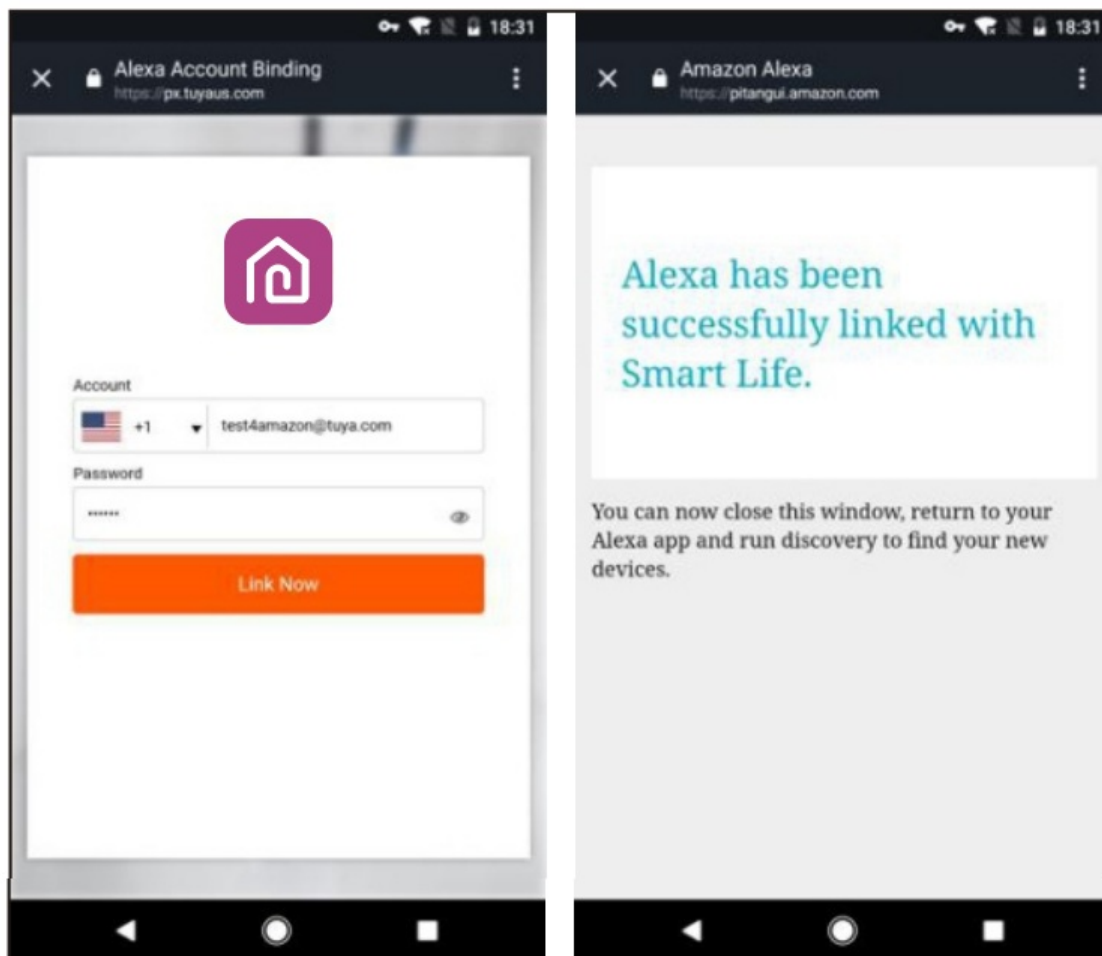


Fig.03

Control your smart devices through Echo

Discover devices

Echo needs to discover your smart devices before it controls them. You can say “Alexa, discover devices” to Echo. Echo will discover devices which have already been added in the Smart Life app. You can also tap “DISCOVER” to discover the smart devices. Discovered devices will be shown in the list. (Fig.04)

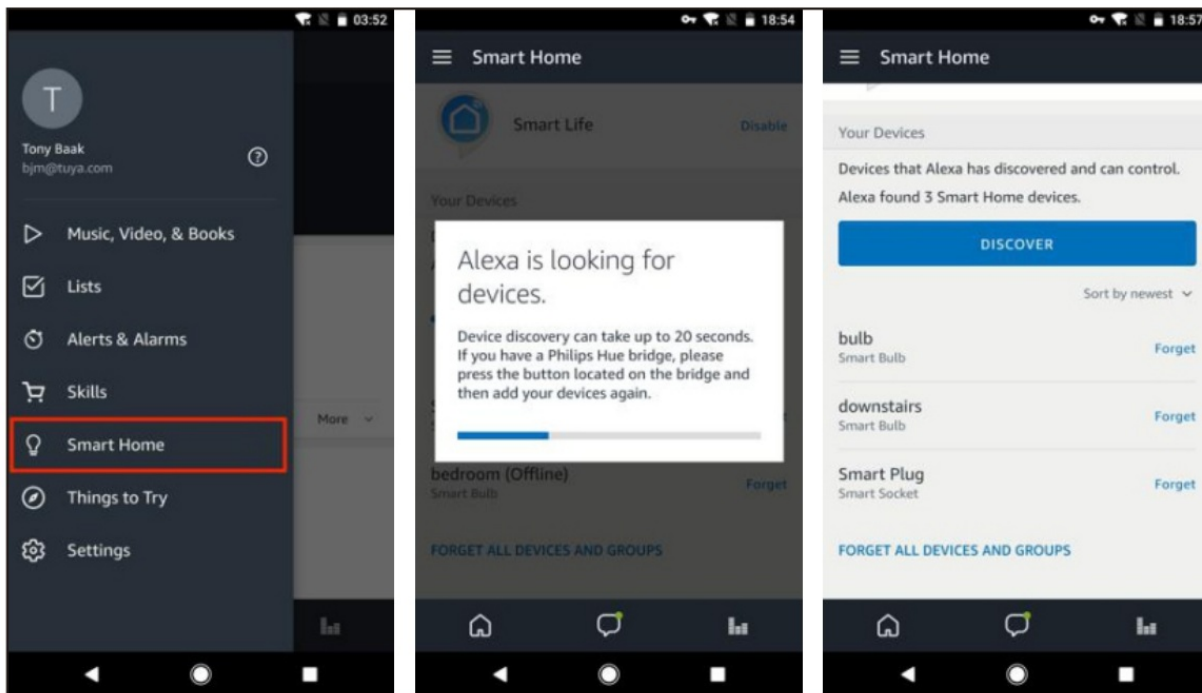


Fig.04

Note: every time you change the device's name on Smart Life app, Echo must re-discover before you control them.

VOICE COMMAND FUNCTION	Example If the device name is “HOME PAC”	Note
TURN ON	“Alexa, turn on <HOME PAC>”	
TURN OFF	“Alexa, turn off <HOME PAC>”	
SET MODE	“Alexa, set <HOME PAC> to <cool mode>”	
SET MODE	“Alexa, set <HOME PAC> to <HEAT mode>”	Only for cooling and heating model
SET TEMP.	“Alexa, set the <HOME PAC> temperature to eighty.”	Need set the temperature unit is °F on ALXEA app. Temp. range is: cool mode: 64°F-90°F heat mode: 55°F -81° F

You can also set up groups in Alexa app. Tap “CREATE GROUP”, give your group a name like “my smart lights”, select devices to add them in this group, then tap “SAVE”. (Fig. 05)

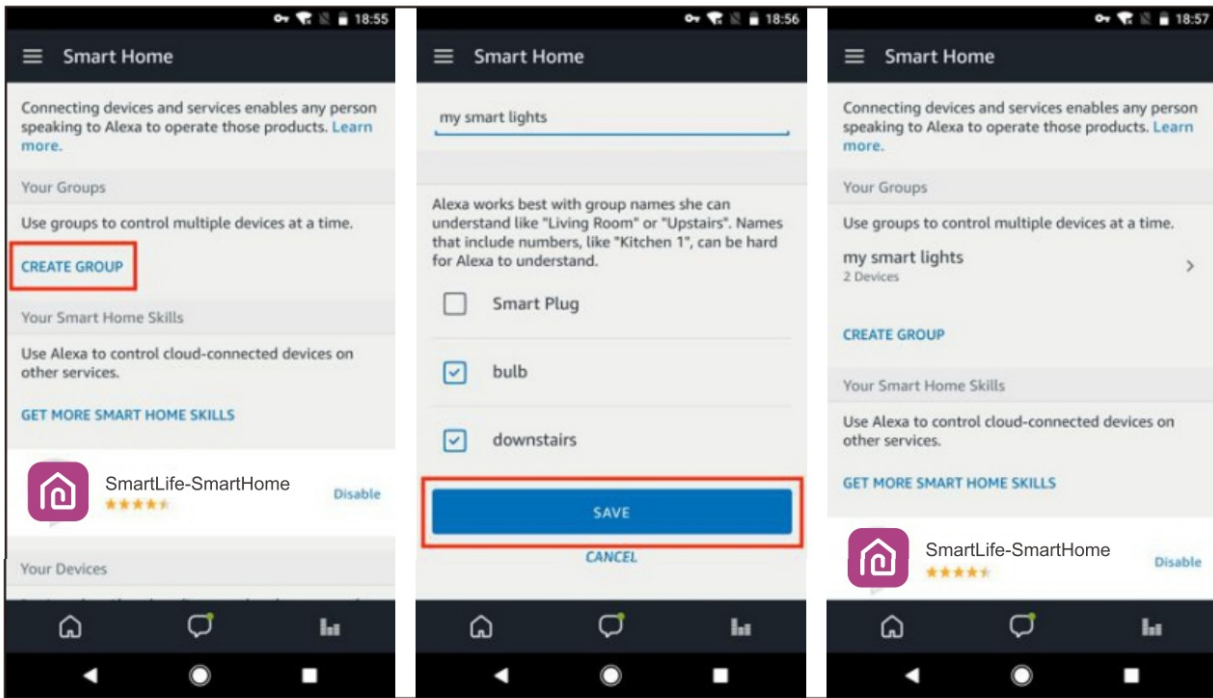


Fig.05

Now you can control your devices by group. Try saying "Alexa, turn on my Air conditioner", all the Air conditioner are turned on!

Documents / Resources

<p>Quick Guide of Using Amazon Echo to Control Smart Devices</p> <p>1. What you need to get started</p> <ul style="list-style-type: none"> 1. Amazon Echo (2nd generation) or later 2. Amazon Echo (2nd generation) or later 3. Amazon Echo (2nd generation) or later <p>2. Add devices to SmartLife-SmartHome (Refer to App Instructions)</p> <p>3. Set up Amazon Echo and enable SmartLife-SmartHome (202)</p>	<p>Smart Life Echo To Control Smart Devices App [pdf] User Guide</p> <p>12000 BTU ASHRAE, 8000 BTU SACC, New 2023 Model, Echo To Control Smart Devices App, Control Smart Devices App, Smart Devices App, Devices App, App</p>
---	--

References

- [User Manual](#)