



Smart Kit EU-OSK105 WiFi Remote Programming User Manual

[Home](#) » [Smart Kit](#) » Smart Kit EU-OSK105 WiFi Remote Programming User Manual 

Contents

- [1 Smart Kit EU-OSK105 WiFi Remote Programming](#)
- [2 Product Information](#)
- [3 SPECIFICATION](#)
- [4 PRECAUTIONS](#)
- [5 DOWNLOAD AND INSTALL APP](#)
- [6 NETWORK CONFIGURATION](#)
- [7 HOW TO USE APP](#)
- [8 SPECIAL FUNCTIONS](#)
- [9 Documents / Resources](#)
 - [9.1 References](#)
- [10 Related Posts](#)

SMARTKIT

Smart Kit EU-OSK105 WiFi Remote Programming



Product Information

Specifications

- Model: EU-OSK105, US-OSK105, EU-OSK106, US-OSK106, EU-OSK109, US-OSK109
- Antenna Type: Printed PCB Antenna
- Frequency Band: 2400-2483.5MHz
- Operation Temperature: 0°C~45°C / 32°F~113°F
- Operation Humidity: 10%~85%
- Power Input: DC 5V/500mA
- Maximum TX Power: [specification missing]

Precautions

Please read the following precautions before installing or connecting your Smart Kit (Wireless module):

1. Ensure that the power is turned off before installation.
2. Do not install the Smart Kit in a location exposed to direct sunlight or extreme temperatures.
3. Keep the Smart Kit away from water, moisture, and other liquids.
4. Do not disassemble or modify the Smart Kit.
5. Do not drop or subject the Smart Kit to strong impacts.
6. Only use the provided power input to avoid damage to the Smart Kit.

Download and Install App

To use the Smart Kit, you need to download and install the accompanying app. Follow the steps below:

1. Visit the app store on your mobile device.
2. Search for “Smart Kit App” and download the app.
3. Once downloaded, open the app and follow the on-screen instructions to complete the installation.

Install the Smart Kit

Follow the steps below to install the Smart Kit:

1. Ensure that the power is turned off.

2. Locate a suitable location to install the Smart Kit. It should be within range of your Wi-Fi network.
3. Connect the Smart Kit to a power source using the provided power input.
4. Wait for the Smart Kit to power on and initialize.

User Registration

To use the Smart Kit, you need to register an account. Follow the steps below:

1. Open the installed Smart Kit app on your mobile device.
2. Tap on the "Register" button.
3. Enter your personal information and create a username and password for your account.
4. Tap on the "Register" or "Sign Up" button to complete the registration process.

Network Configuration

To configure the network settings for your Smart Kit, follow the steps below:

1. Make sure your mobile device is connected to the same Wi-Fi network you want to connect the Smart Kit to.
2. Open the Smart Kit app on your mobile device.
3. Tap on the "Settings" or "Configuration" option.
4. Select "Network" or a similar option.
5. Follow the on-screen instructions to connect the Smart Kit to your Wi-Fi network.

How to Use App

Once the Smart Kit is installed and connected, you can use the app to control and manage it. Follow the steps below:

1. Open the installed Smart Kit app on your mobile device.
2. Log in to your registered account.
3. Explore the app's features and options to control and configure the Smart Kit.
4. Refer to the app's user manual or help section for more detailed instructions on specific functions.

Special Functions

The Smart Kit offers special functions that enhance its capabilities. Refer to the app's user manual or help section for detailed instructions on how to utilize these functions.

FAQ's

How do I reset the Smart Kit to factory settings?

To reset the Smart Kit to factory settings, locate the reset button on the device and press and hold it for 10 seconds until the LED indicators flash.

Can I control multiple Smart Kits with a single app?

Yes, you can control multiple Smart Kits using a single app. Make sure each Smart Kit is connected to the same Wi-Fi network as your mobile device.

IMPORTANT NOTE:

Read the manual carefully before installing or connecting your Smart kit(Wireless module). Make sure to save this manual for future reference.

DECLARATION OF CONFORMITY

Hereby, we declare that this Smart kit is in compliance with the essential requirements and other relevant provisions of Directive 2014/53/EU. A copy of the full DoC is attached. (European Union products only)

SPECIFICATION

- **Model:** EU-OSK105,US-OSK105, EU-OSK106, US-OSK106,EU-OSK109, US-OSK109
- **Antenna Type:** Printed PCB Antenna
- **Standard:** IEEE 802. 11b/g/n
- **Frequency Band:** 2400-2483.5MHz
- **Operation Temperature:**0°C~45°C/32°F~113°F
- **Operation Humidity:** 10%~85%
- **Power Input:** DC 5V/300mA
- **Maximum TX Power:** <20dBm

PRECAUTIONS

Applicable system:

- iOS, Android. (Suggest: iOS 8.0 or later, Android 4.4 or later)
 - Please keep you APP up to date with the latest version.
 - Due to special situation maybe occurred, we explicitly claims below: Not all of the Android and iOS system are compatible with APP. We will not be responsible for any issue as a result of the incompatibility.

- **Wireless safety strategy**

Smart kit only support WPA-PSK/WPA2-PSK encryption and none encryption. WPA-PSK/WPA2-PSK encryption is recommended.

- **Cautions**

- Due to different network situation, control process may return time-out sometimes. If this situation occurs, the display between board and App may not be the same, please do not feel confused.
- Smart Phone camera needs to be 5 million pixels or above to make sure scan QR code well.
- Due to different network situation, sometimes, request time-out could happen, thus, it is necessary to do network configuration again.
- The APP system is subject to update without prior notice for product function improvement. The actual network configuration process may be slightly different from the manual, the actual process shall prevail.
- Please Check The Service Website For More information.

DOWNLOAD AND INSTALL APP

CAUTION: The following QR Code is only available for downloading APP. It is totally different with the QR code packed with SMART KIT.



Android



iOS

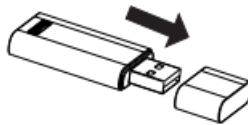
- Android Phone users: scan Android QR code or go to google play, search `NetHome Plus` app and download it.
- iOS users: scan iOS QR code or go to APP Store, search `NetHome Plus` app and download it.

INSTALL THE SMART KIT

(wireless module)

Note: Illustrations in this manual are for explanatory purposes. The actual shape of your indoor unit may be slightly different. The actual shape shall prevail.

1. Remove the protective cap of the smart kit.



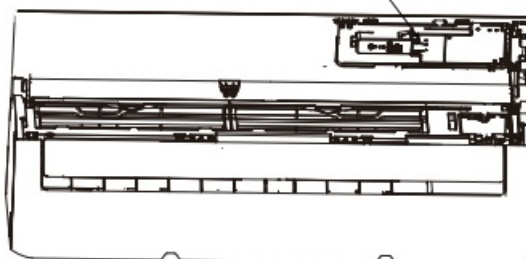
2. Open the front panel and insert the smart kit into the reserved interface(For model A).



Model A

Open the front panel, unscrew the display cover and remove it, then insert the smart kit into the reserved interface(For model B). Reinstall the display cover.

Remove the screw



Model B

WARNING: This interface is only compatible with SMART KIT(Wireless module) provided by the manufacturer. For the smart device access, replacement, maintenance operations must be carried out by professional staff.

3. Attach the QR code packed with SMART KIT to the side panel of the machine or other convenient location,

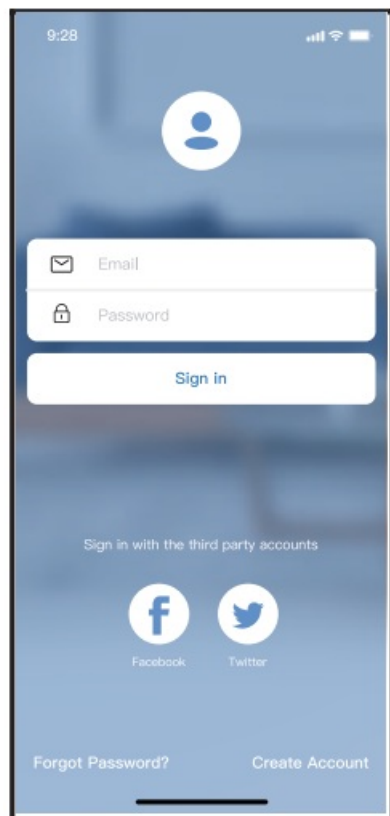
ensure it is convenience to be scanned by the mobile phone.

Kindly remind: It is better to reserve the other two QR Code in a safe place or take a picture and save it in your own phone.

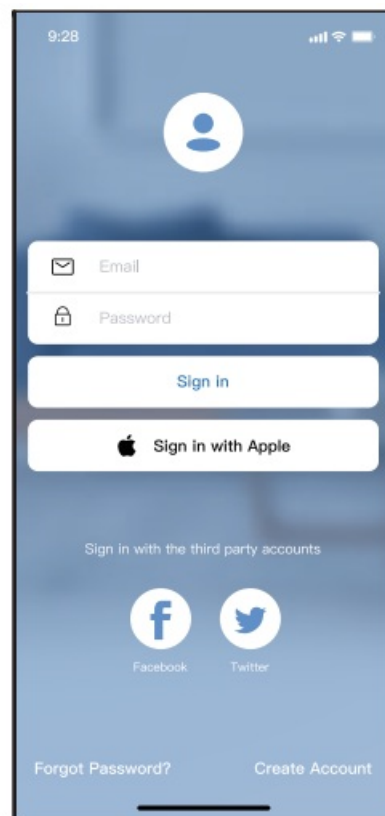
USER REGISTRATION

Please ensure your mobile device is connected to Wireless router. Also, the Wireless router has already connected to Internet before doing user registration and network configuration. It is better to log in your email box and active your registration account by clicking link in case you forget the password. You can log in with the third party accounts.

1. Click "Create Account"



Android



iOS

2. Enter your email address and password, and then click "Register"

9:41

Create Account

Enter your Email address

Password

Confirm Password

Password need 6-20 characters, must contain letters and numbers.

Register

☐ I have read and agree to the terms and privacy

NETWORK CONFIGURATION

Cautions

- It is necessary to forget any other around network and make sure the Android or iOS device just connect to the Wireless network you want to configure.
- Make sure the Android or iOS device Wireless function works well and can be connected back to your original Wireless network automatically.

Kindly reminder:

User must finish all the steps in 8 minutes after powering on air conditioner, otherwise, you need to power on it again.

Using Android or iOS device to do network configuration

1. Make sure your mobile device has already been connect to the Wireless network which you want to use. Also, you need to forget other irrelevant Wireless networks in case it influences your configuration process.
2. Disconnect the power supply of air conditioner.
3. Connect the power supply of AC, and continuously press the "LED DISPLAY" or "DO NOT DISTURB" button seven times in 10 seconds.
4. When the unit displays "AP", it means that the air conditioner wireless has already entered into "AP" Mode.

Note:

There are two ways to finish the network configuration:

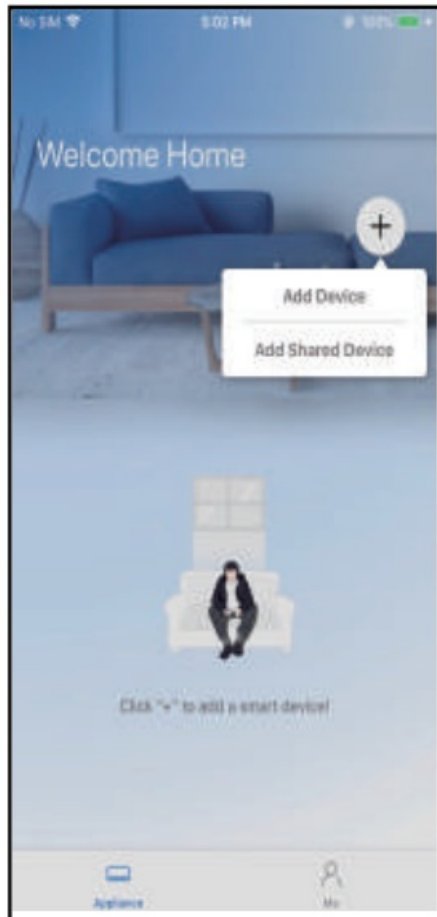
- Network configuration by Bluetooth scan

- Network configuration by select appliance type

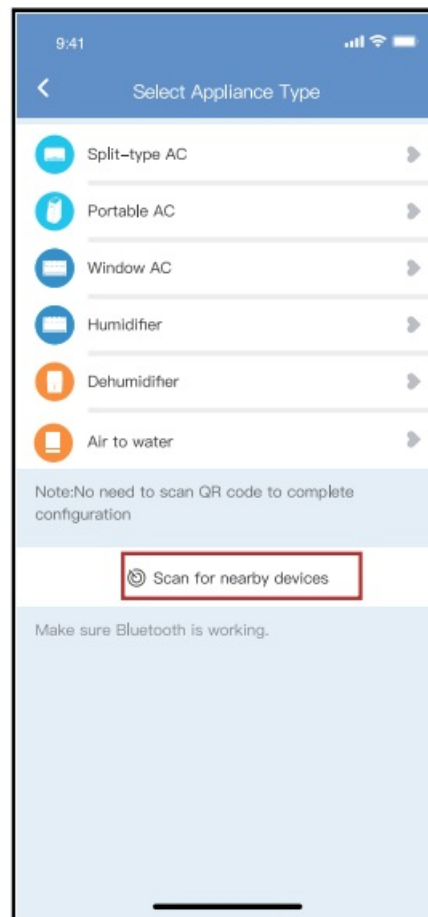
Network configuration by Bluetooth scan

Note: Make sure the bluetooth of your mobile device is working.

1. Press “ + Add Device ”
2. Press “Scan for nearby devices”

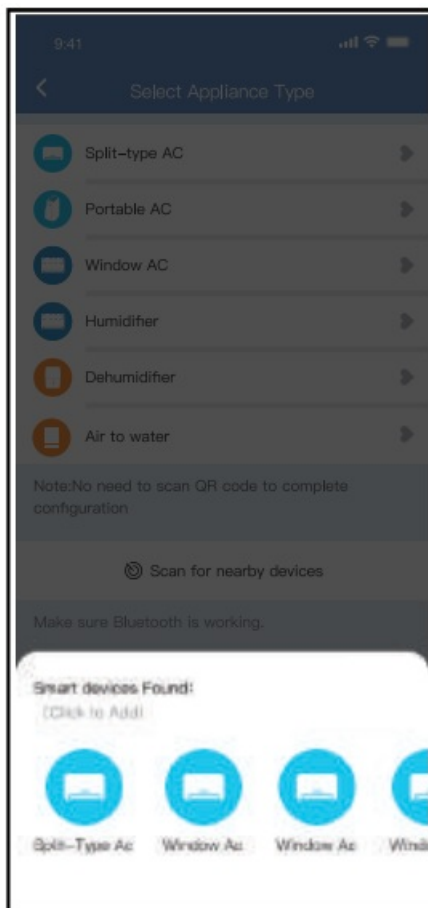


①

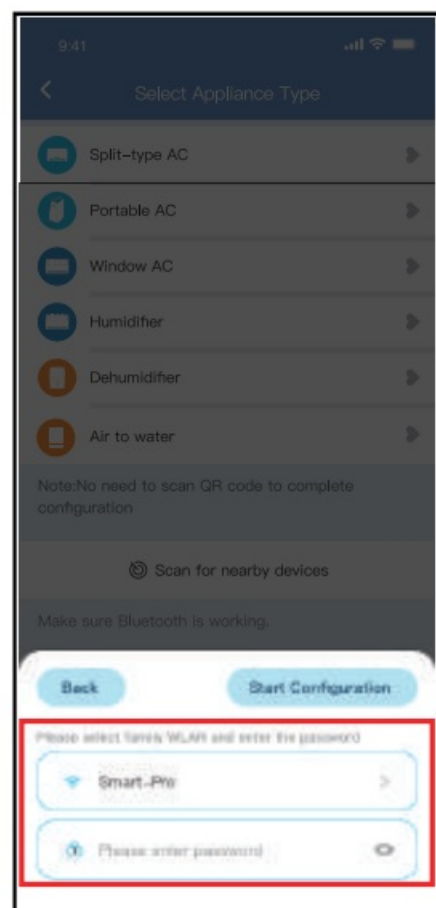


②

3. Wait smart devices to find, then click to add it
4. Select home Wireless, enter the password



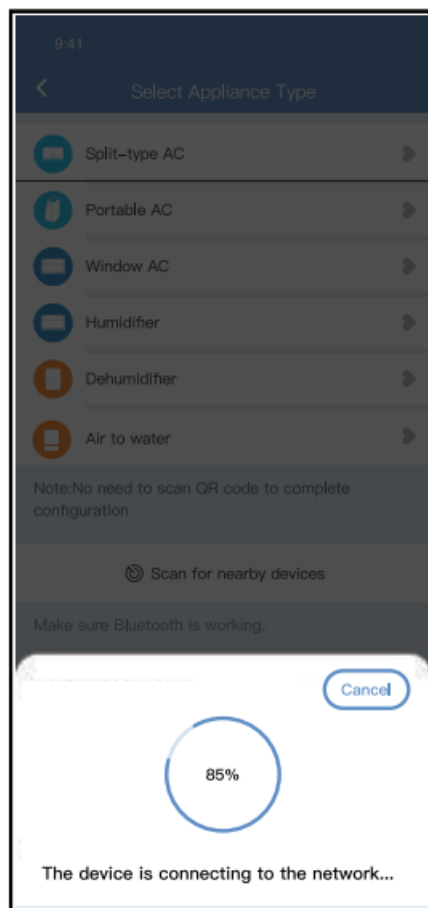
③



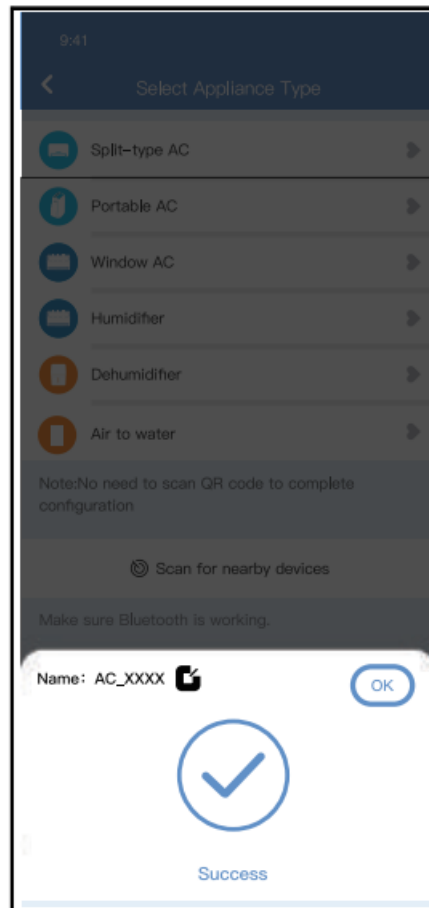
④

5. Wait connecting to the network

6. Configuration Success, you can modify the default name.

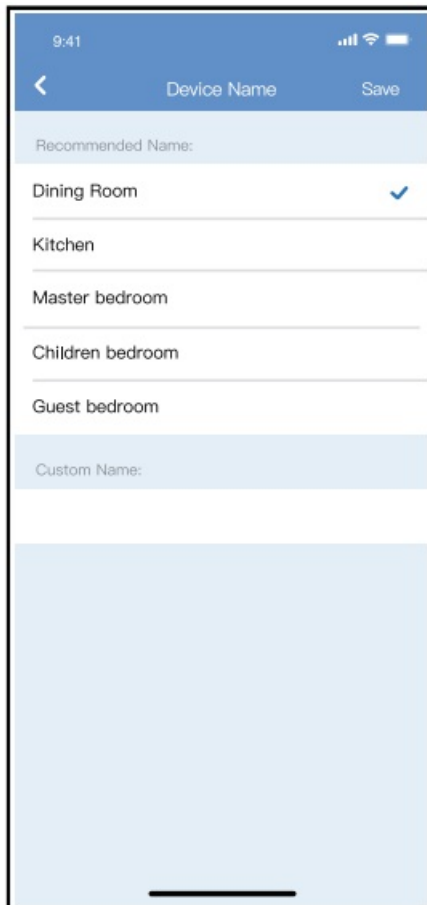


⑤

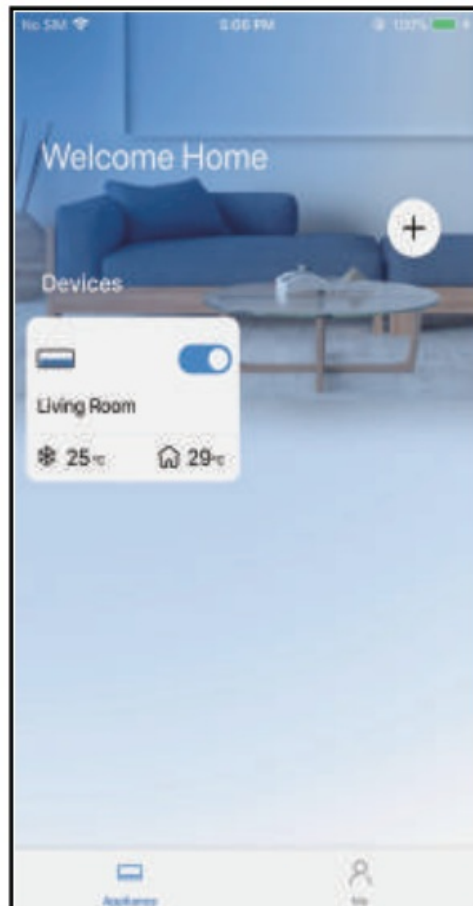


⑥

7. You can choose an existing name or customize a new name.
8. Bluetooth network configuration is successful, now you can see the device in the list.



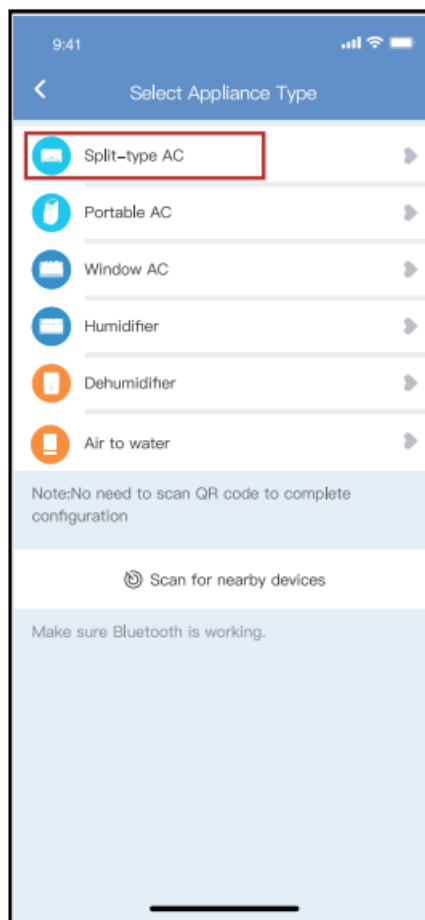
⑦



⑧

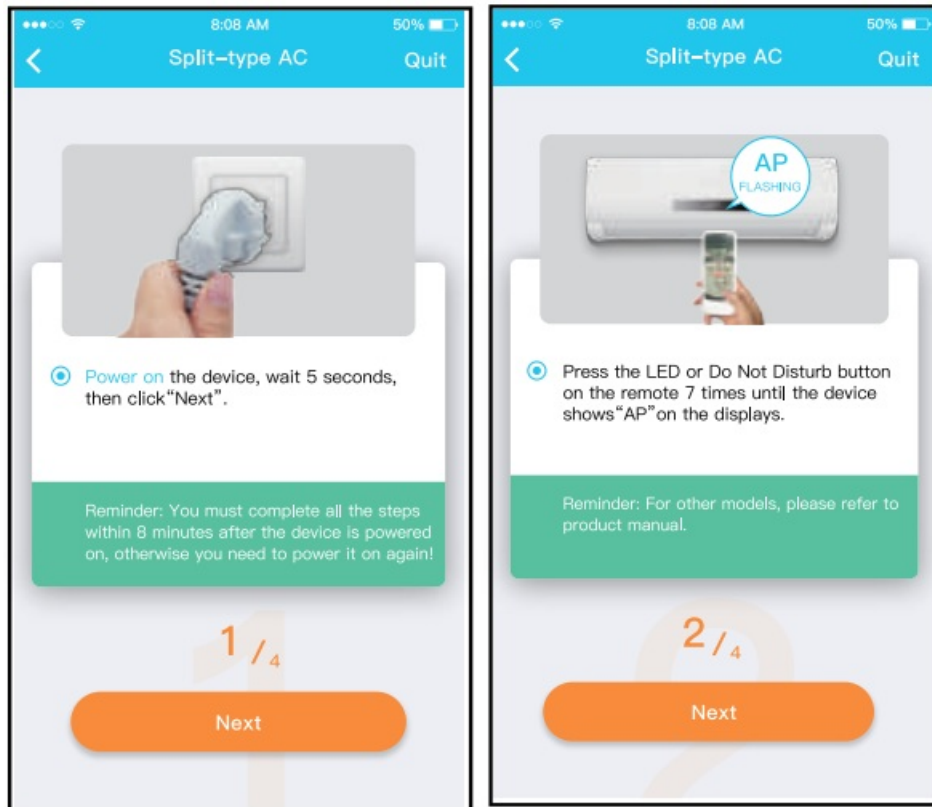
Network configuration by select appliance type :

1. If the bluetooth network cofiguration is failure, please select the appliance type.



①

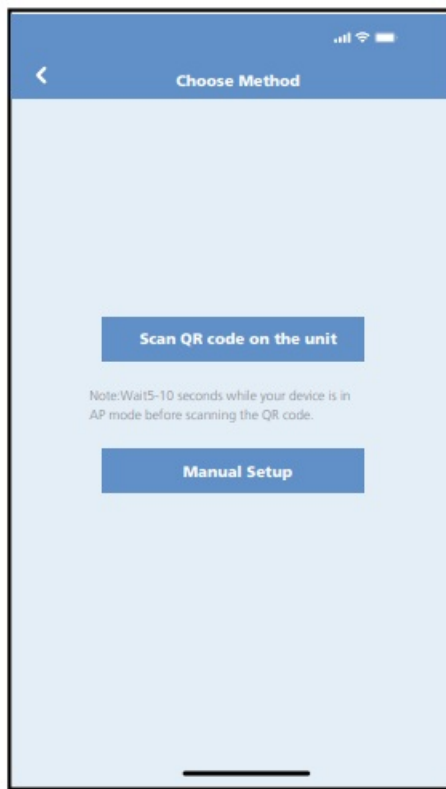
2. Please follow the above steps to enter "AP" mode.



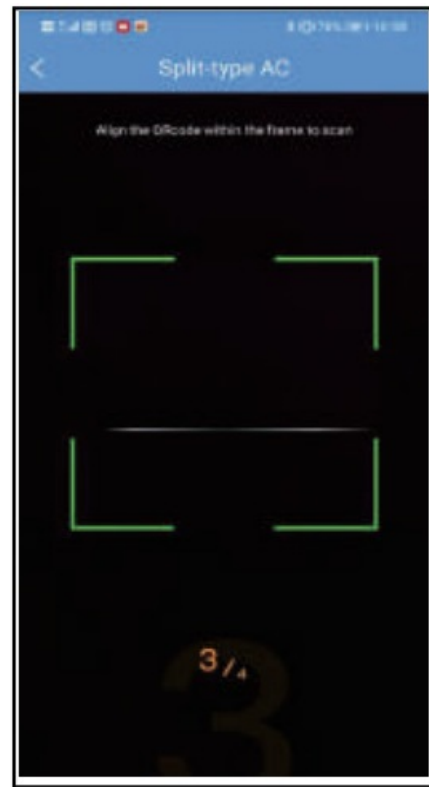
②

3. Choose the network configuration method.

4. Choose the "Scan the QR code" method.



③



④

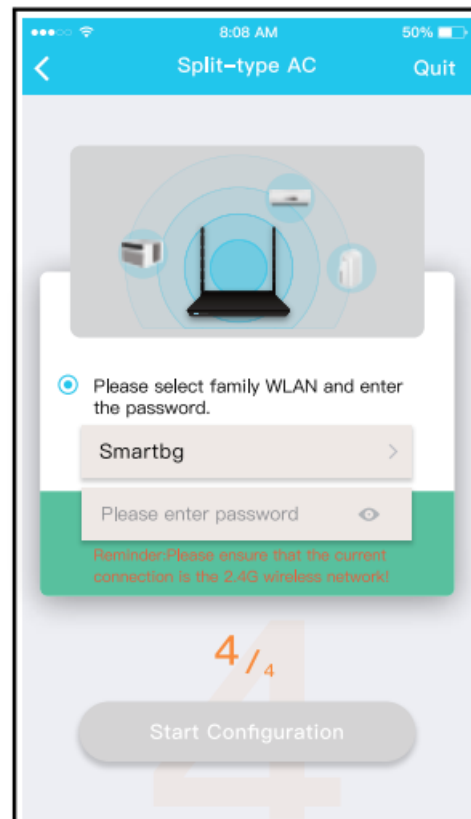
NOTE: Steps 3 and 4 are applicable to Android system only. iOS system does not need these two steps.

5. When choose the "Manual Setup" method(Android). Connect to the wireless network(iOS)

6. Please enter password



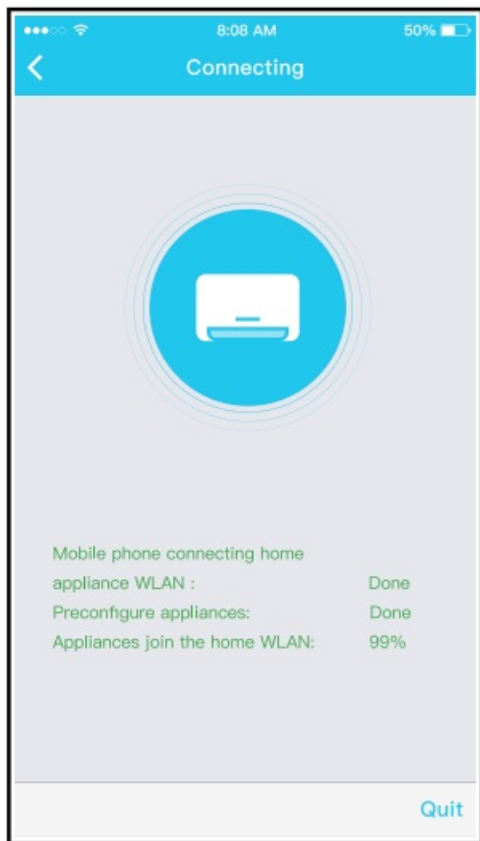
⑤



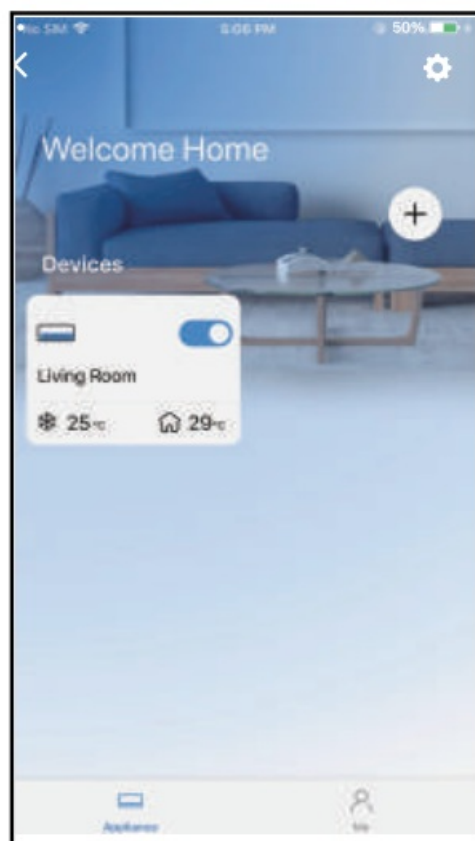
⑥

7. Network configuration is successful

8. Configuration Success, you can see the device in the list.



⑦



⑧

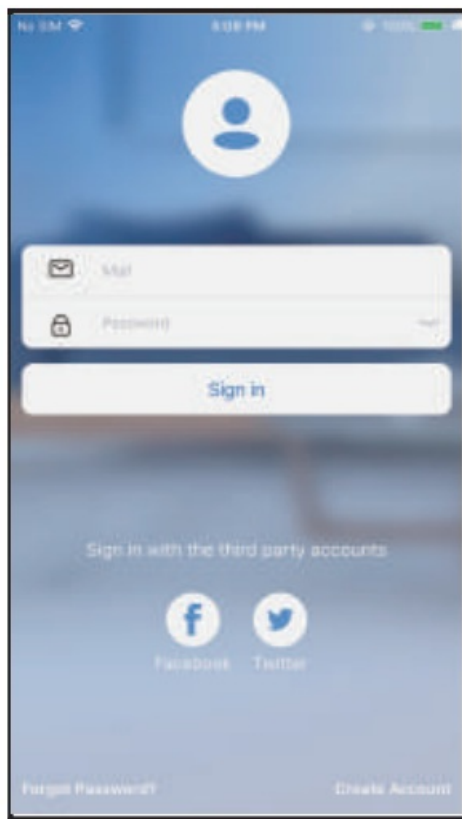
NOTE:

When finishing network configuration, APP will display success cue words on the screen. Due to different internet environment, it is possible that the device status still display "offline". If this situation occurs, it is necessary to pull and refresh the device list on the APP and make sure the device status become "online". Alternatively, user can turn off the AC power and turn on it again, the device status will become "online" after few minutes.

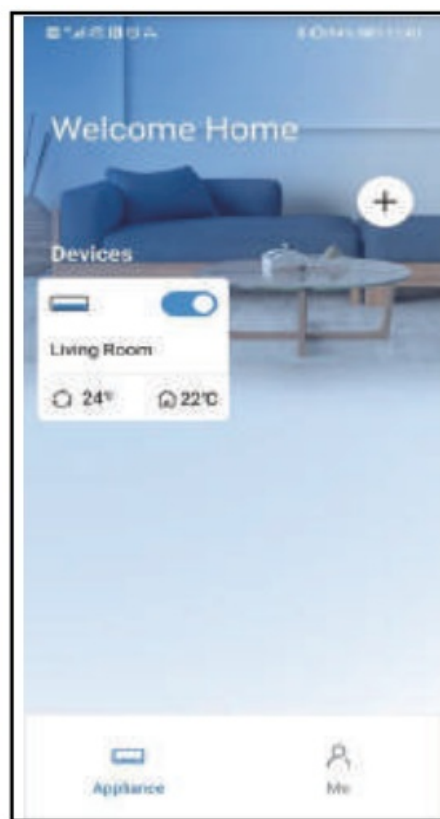
HOW TO USE APP

Please ensure both your mobile device and air conditioner are connected to the Internet before using app to control the air conditioner via internet, please follow the next steps:

1. Click "Sign in"
2. Choose the air conditioner.

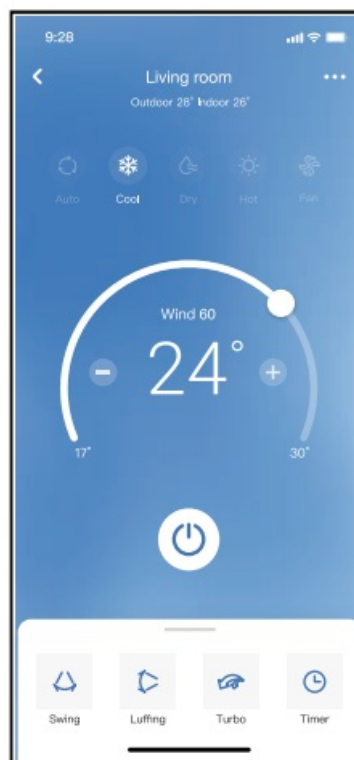


①



②

3. Thus, user can control air conditioners on/off status, operation mode, temperature, fan speed and so on.



③

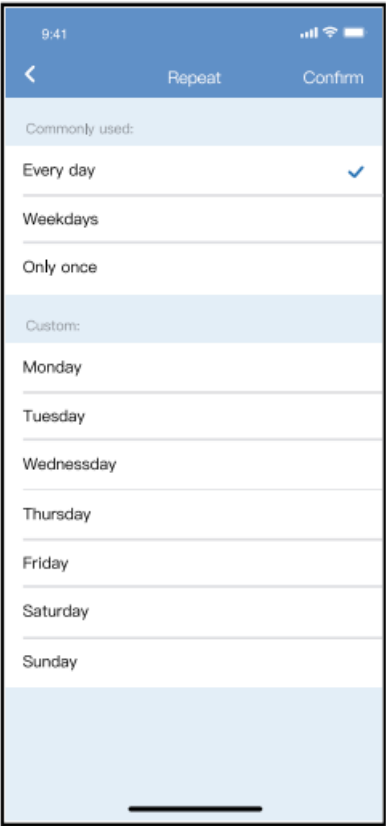
NOTE:

Not all the function of the APP is available on air conditioner. For example: ECO, Turbo, Swing function, please check the user manual to find more information.

SPECIAL FUNCTIONS

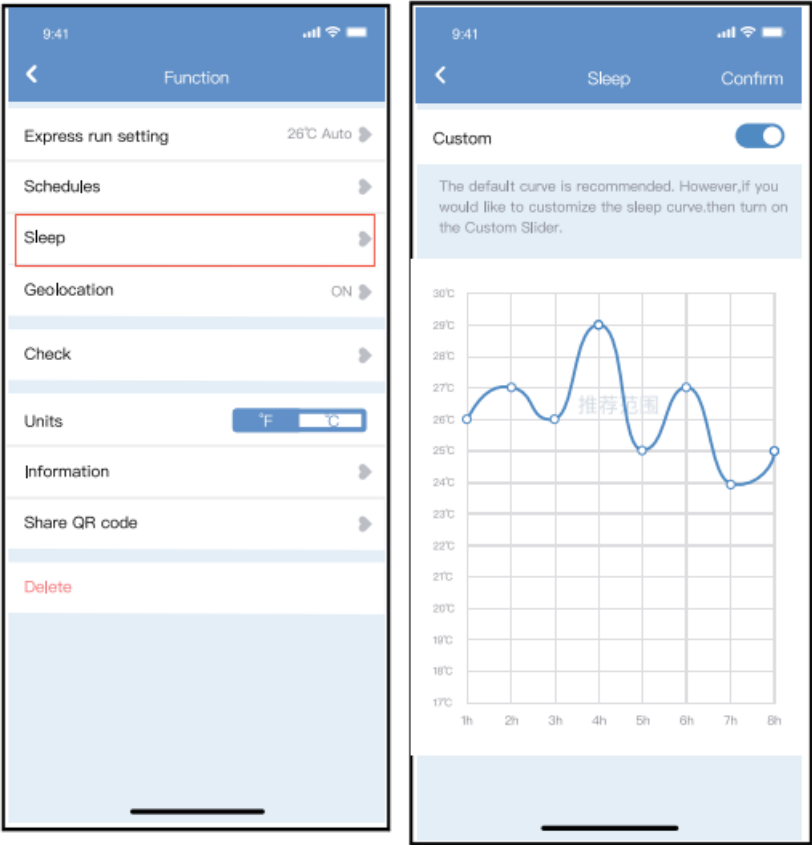
Schedule

Weekly, user can make an appointment to turn on or off AC on a specific time. User also can choose circulation to keep the AC under schedule control every week.



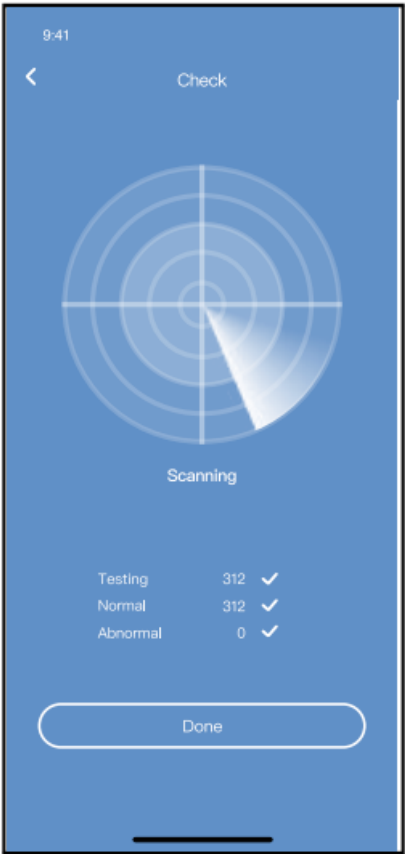
Sleep

User can customize their own comfortable sleep by setting a target temperature.



Check

Users can simply check the AC running status with this function. When finishing this procedure, it can display the normal items, abnormal items, and detail information.



Share Device

The air conditioner can be controlled by multi-users at the same time by Share Device function.

1. Click "Shared QR code"
2. QR code display.

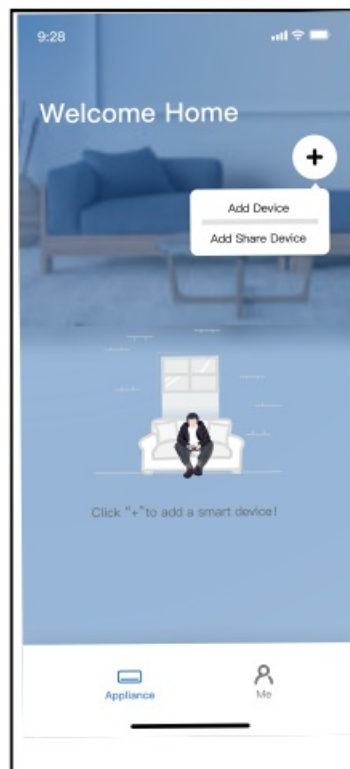


①

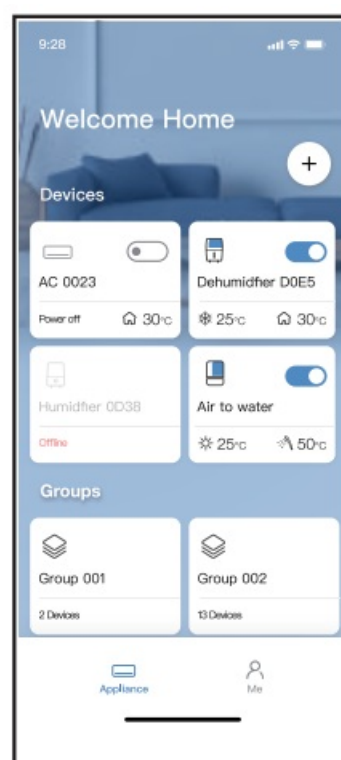


②

3. The other users must log in Nethome Plus app first, then click Add Share Device on their own mobile, then ask them to scan the QR code.
4. Now the others can add the shared device.



③



④

CAUTIONS:

Wireless module models: US-OSK105, EU-OSK105
FCC ID:2AS2HMZNA21
IC:24951-MZNA21
Wireless module models: US-OSK106, EU-OSK106
FCC ID:2AS2HMZNA22
IC:24951-MZNA22
Wireless module models: US-OSK109,EU-OSK109
FCC ID: 2AS2HMZNA23
IC: 24951-MZNA23

This device complies with Part 15 of the FCC Rules and it contains licence-exempt transmitter(s)/receiver(s) that comply with Innovation, Science and Economic Development Canada's licence-exempt RSS(s).

Operation is subject to the following two conditions:

1. This device may not cause harmful interference; and
2. This device must accept any interference, including interference that may cause undesired operation of the device.

Only operate the device in accordance with the instructions supplied. Changes or modifications to this unit not expressly approved by the party responsible for compliance could void the user's authority to operate the equipment. This device complies with FCC radiation exposure limits set forth for an uncontrolled environment. In order to avoid the possibility of exceeding the FCC radio frequency exposure limits, human proximity to the antenna shall not be less than 20cm (8 inches) during normal operation.

In Canada:

CAN ICES-3(B)/NMB-3(B)

NOTE: This equipment has been tested and found to comply with the limits for a Class B digital device, pursuant to part 15 of the FCC Rules. These limits are designed to provide reasonable protection against harmful interference in a residential installation. This equipment generates, uses and can radiate radio frequency energy and, if not installed and used in accordance with the instructions, may cause harmful interference to radio communications. However, there is no guarantee that interference will not occur in a particular installation. If this equipment does cause harmful interference to radio or television reception, which can be determined by turning the equipment off and on, the user is encouraged to try to correct the interference by one or more of the following measures:

- Reorient or relocate the receiving antenna.
- Increase the separation between the equipment and the receiver.
- Connect the equipment to an outlet on a circuit different from that to which the receiver is connected.
- Consult the dealer or an experienced radio/TV technician for help.

The company will not be liable for any issues and problems caused by the Internet, Wireless Router and Smart Devices. Please contact the original provider to get further help.

CS374-APP(OSK105-OEM) 16110800000529 20230515

<div>USER MANUAL OF SMART KIT</div> <div>IMPORTANT NOTE: Read the manual carefully before installing or connecting your SmartKit(Wireless module). Make sure to save this manual for future reference.</div>	<div>Smart Kit EU-OSK105 WiFi Remote Programming [pdf] User Manual</div> <div>EU-OSK105 WiFi Remote Programming, EU-OSK105, WiFi Remote Programming, Remote Programming</div>
--	---

References

- [User Manual](#)