

Smart Keyless DS02-QT-03 Fingerprint Door Lock with App Control



Smart Keyless DS02-QT-03 Fingerprint Door Lock with App Control Instruction Manual

[Home](#) » [Smart Keyless](#) » Smart Keyless DS02-QT-03 Fingerprint Door Lock with App Control Instruction Manual



Contents

- 1 Smart Keyless DS02-QT-03 Fingerprint Door Lock with App Control
- 2 PRODUCT PROFILE
- 3 Specifications
- 4 FEATURES
- 5 PACKING LIST
- 6 INSTALLATION DIAGRAM
- 7 DOOR PREPARATION
- 8 INSTALLATION INSTRUCTION
- 9 PAIR THE LOCK WITH THE TUYA APP
- 10 FUNCTIONAL SETTINGS
- 11 FCC STATEMENT
- 12 Documents / Resources
 - 12.1 References

Smart Keyless

Smart Keyless DS02-QT-03 Fingerprint Door Lock with App Control



Note

1. This lock is equipped with mechanical keys for manual unlocking. Remove mechanical keys from the package keep them in a safe place and always have access to them.
2. To power on the lock, 4 x AAA Alkaline batteries (not included) are required.
3. This lock is used outdoors and indoors.
4. Keep your fingers clean when using this lock.

If you have any questions about the installation and usage process, please contact us by mail:
service_lock@outlook.com.

Please read this manual before operating the smart lock, and keep it for further reference. Scan the QR code to watch the INSTALLATION VIDEO.



PRODUCT PROFILE

App Control Door Lock via Bluetooth

- This smart lock uses the latest technology to make your life easier.
- It can be operated via bluetooth using the mobileApp, it's suited for Homes, Apartments, Offices, Airbnbs, Motels, Holiday Homes, etc.

Specifications

| | | | |
|---|---|--------------------------|------------|
| Material | Zinc Alloy | Model No. | DS02-QT-03 |
| Door thickness | 34mm-55mm | Part No. | G100 |
| Working Temperature | -15°C~70°C | Working Humidity | 20%~80%RH |
| Working Power Consumption | 250mA | Static Power Consumption | 85uA |
| Power Supply | 6V (4 x AAA Alkaline Batteries, Not included) | | |
| Unlocking Methods | App, Fingerprint, Mechanical Key | | |
| User Capacity | 50 fingerprint users | | |
| Product Dimension | 7.25X2.75X2.75 in | | |
| * All specifications are subject to change without notice. All rights reserved. | | | |

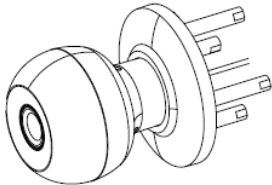

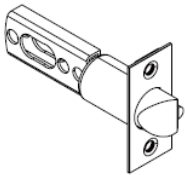
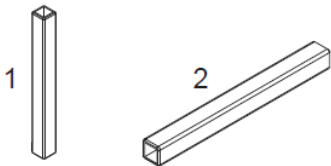
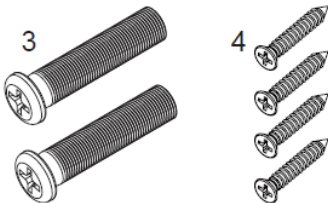
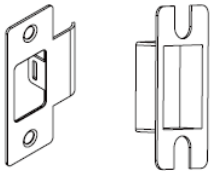

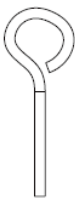
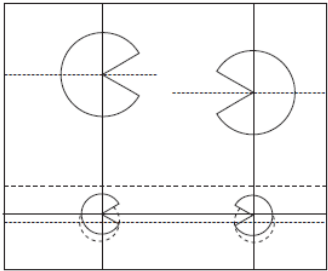
FEATURES

- **Three Ways to Unlock:** App, Fingerprint, Mechanical Key.
- **Idling lock handle design:** When the door is locked, the clutch is in an idle position, and the front handle will be turned. However, the door will remain locked.
- **Keyboard Locked:** After 10 times failed fingerprint attempts, fingerprint recognition will stop working for 1 minute. Key and App Unlock can be used to unlock in this state.
- **Low power warning:** If the batteries are running low (lower than 4.8V or 20% of battery level), The lock will indicate that the battery is low, please replace the battery when unlocking. You can also check your battery level on the App.
- **Emergency Power Supply:** There is a Type-C interface equipped on the bottom of the front handle to unlock the lock temporarily by connecting the power bank with a Type-C cable. Please use a 5V/2A or higher power

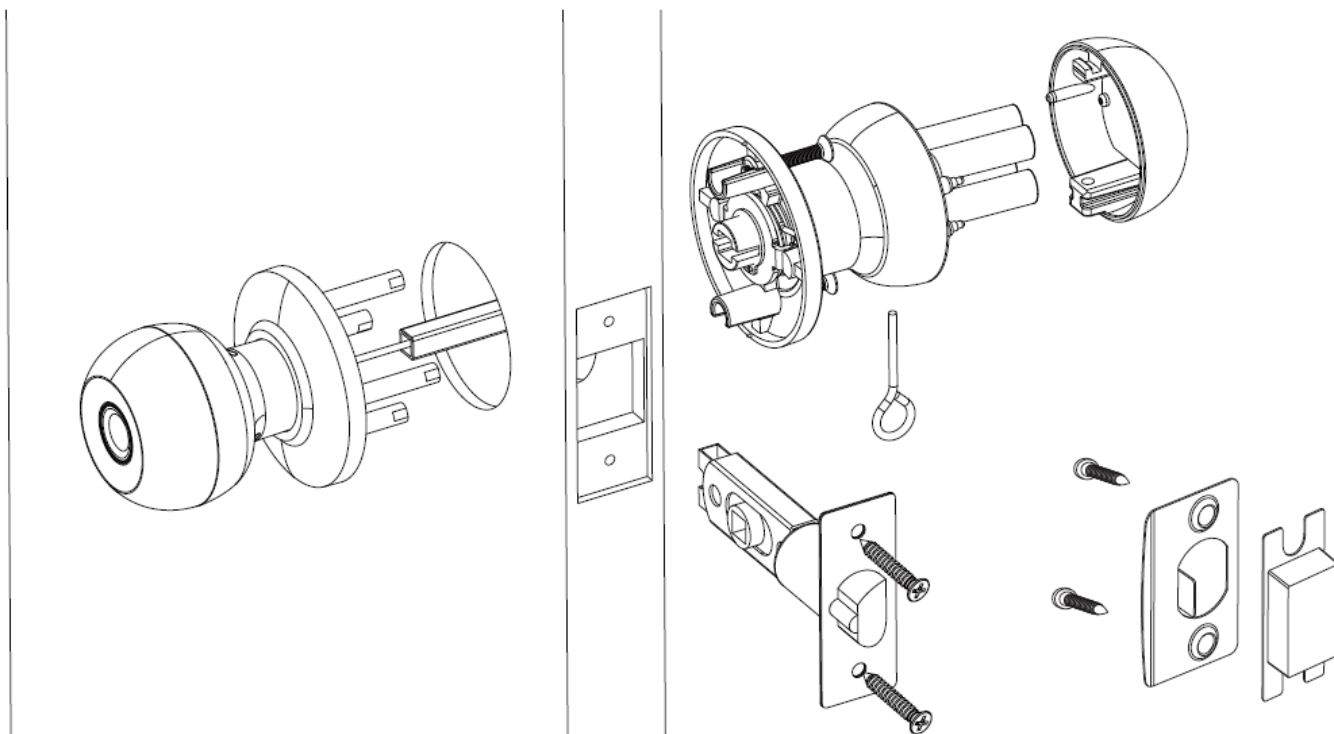
bank for power supply.

- **Real-Time Record:** You can check to unlock records on your App.
- **Fingerprint indicator light (breathing light):** When adding fingerprints, the breathing light is blue. When unlocking with fingerprints successfully, the breathing light is green, and when unlocking with fingerprints fails, the breathing light is red.

PACKING LIST

| | | |
|--|--|--|
| A  Exterior knob with Fingerprint | B  Interior knob with Reset button | C  Latch Bolt |
| D  Square rod D-1. 64mm for door thickness 34~44mm D-2. 75mm for door thickness 44~55mm | E  Screws E-3. Connect the Interior knob E-4. Connect the latch bolt and strike plate | F  Strike plate & Plastic box |
| G  Backup Keys | H  Pin | I  Locator Card |

INSTALLATION DIAGRAM

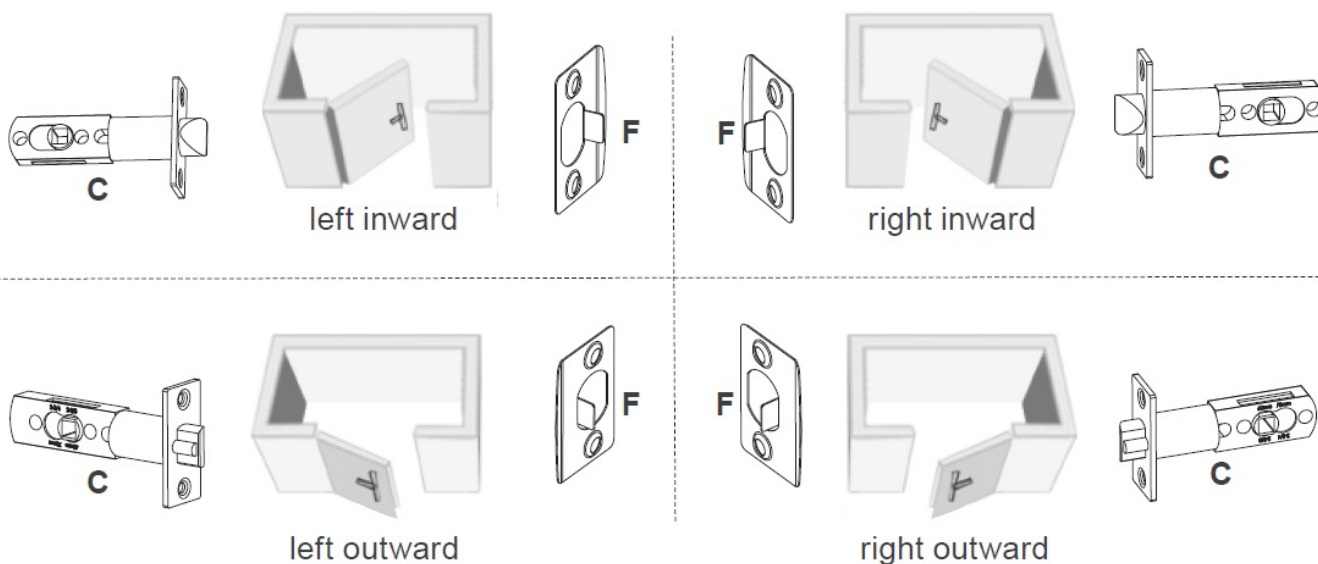


DOOR PREPARATION

Check door thickness

- Door thickness: 34~55mm

Check the door open direction



Note: Please refer to the above picture to adjust the direction of the strike plate (F) and latch (C).

Warning

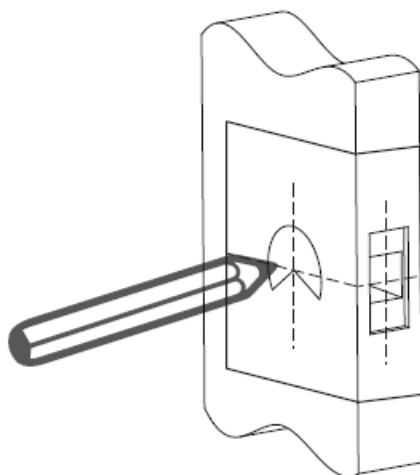
This manufacturer advises that no lock can provide complete security by itself, this lock may be defeated by forcible or technical means or evaded by entering elsewhere of the house. No lock can substitute for caution, awareness of your environment, and common sense. Builder's hardware is available in multiple performance grades to suit the application. To enhance security and reduce risk, you should consult a qualified technician or other security professional.

INSTALLATION INSTRUCTION

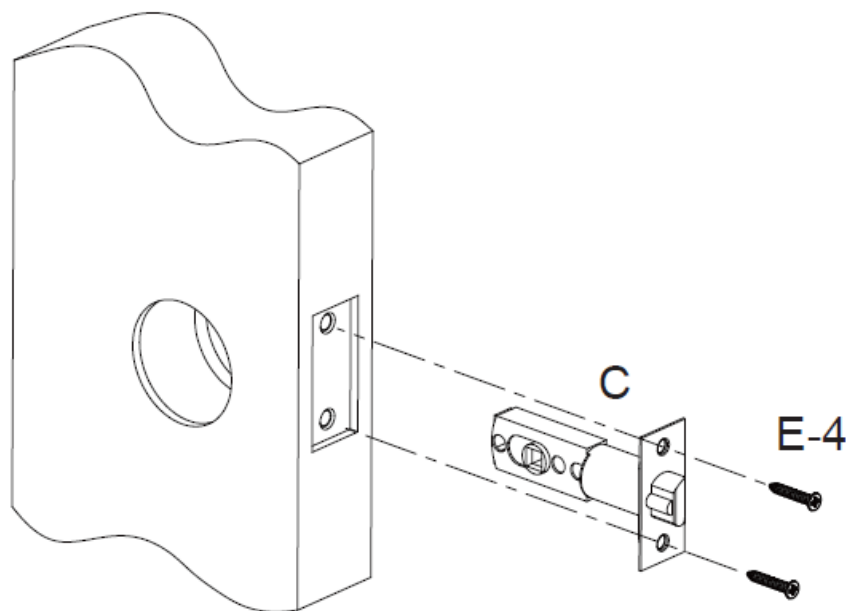
Step 1: Drill the holes according to the Locator Card(I) for the new door.

Note:

1. Check the required backset 2-3/8"(60mm) or 2-3/4"(70mm).
2. Align the template along the vertical centre line of the single latch (C) at the desired height, and tape it to the door.
3. Mark the holes first, then start drilling.



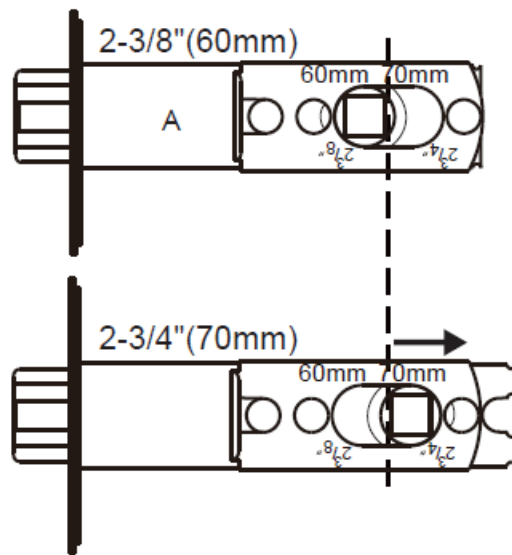
Step 2: Install the single latch (C) with screws (E-4)



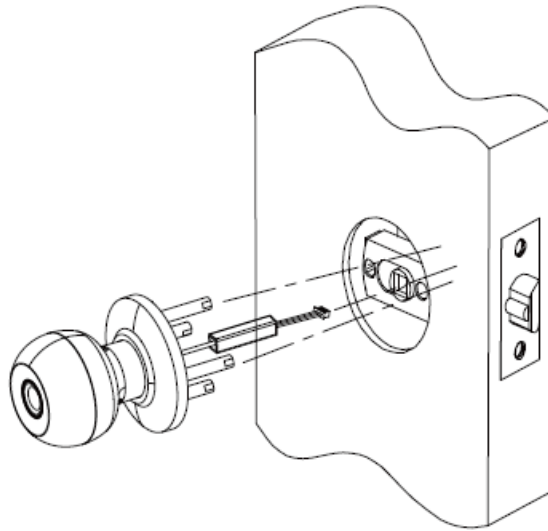
Note:

The single latch has TWO backset options: 2-3/8"(60mm) and 2-3/4"(70mm).

To change from 2-3/8"(60mm) to 2-3/4"(70mm), hold the square hole of the single latch and move it towards 2-3/4"(70mm) taking care not to tilt the square hole.

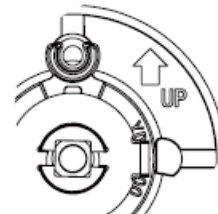
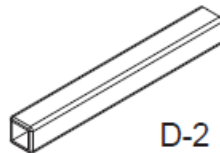


Step 3: Exterior knob with Fingerprint (A)



1. Install appropriate square rods according to the thickness of the door

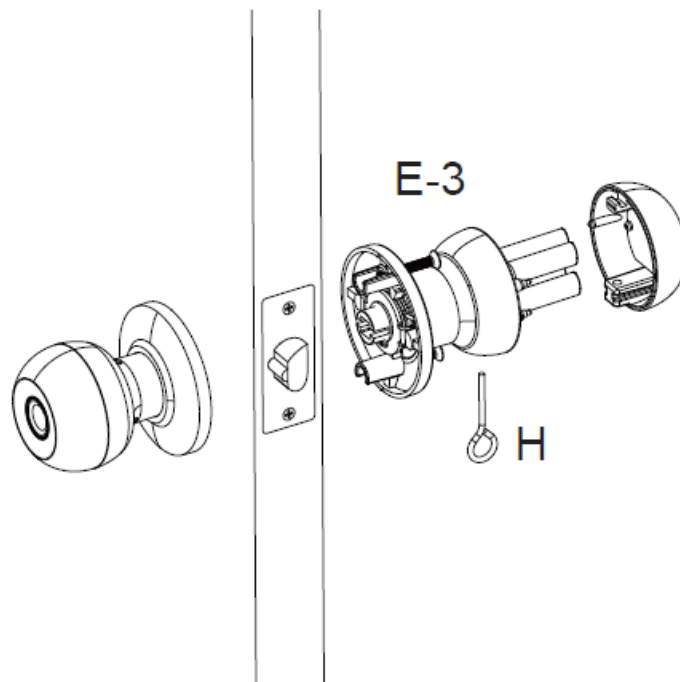
- D-1. Square rods of 64mm for door thickness 34~44mm
- D-2. Square rods of 75mm for door thickness 44~55mm



2. Please follow the "UP" sign on the inside of the lock on the handle, note that the keyhole and Type-C interface are facing downwards.

Step 4: Interior knob with Reset button(B)

Please follow the "UP" sign on the inside of the lock on the handle



1. Open the battery cover with Pin (H)
2. The cable goes through the hole in the back handle.
3. Fasten the lock with screws (E-3)
4. Connect the cable to the interface which is on the cover of the back handle. (Refer to Image 01)
5. Install 4 x AAA Alkaline batteries (Not included)
6. Install the battery cover with Pin (H)

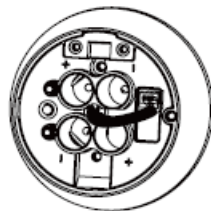
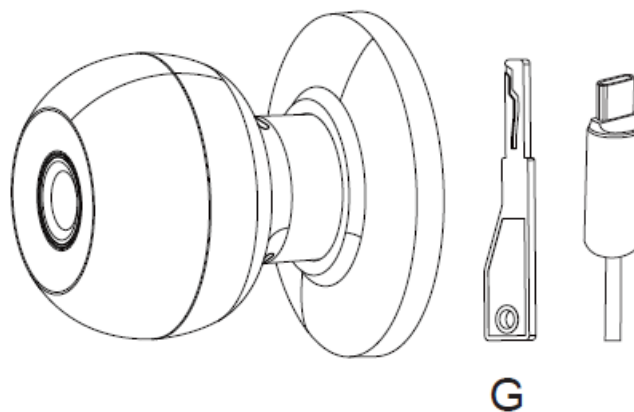


Image 01

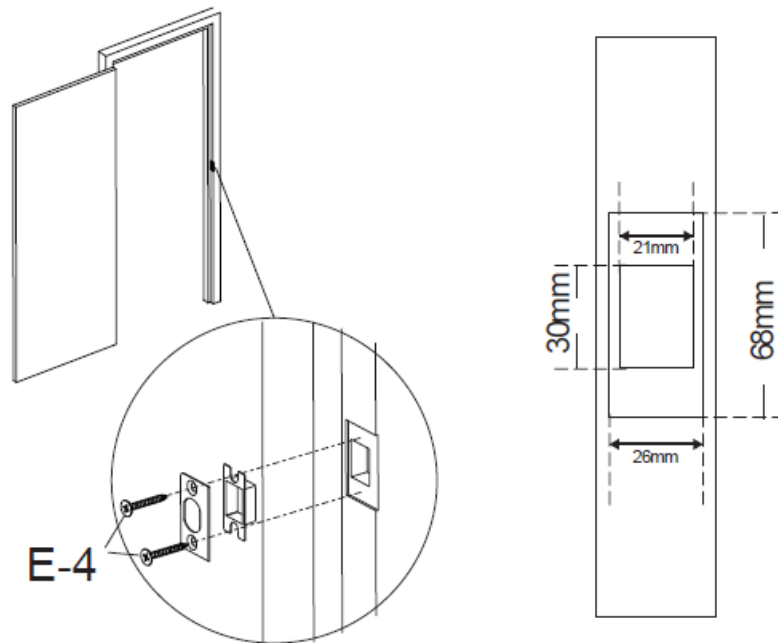
Step 5: Test the lock

1. Insert the Backup key(G) and turn 45°, then rotate the front handle to test the lock.
2. Insert the Type-C emergency power supply to test the lock



Step 6: Install Strike plate & Plastic box (F)

- Drill the holes according to needed size



PAIR THE LOCK WITH THE TUYA APP

App Operation Guide

We recommend using the app because it's easier to set up and more convenient for future use.

Create an Account

- Android: Search Smart Life on Google Play.
- IOS: Search Smart Life on the App Store.
- OR: Scan the QR code below to download the Smart Life App
- Sign up and log into your account with an email address.

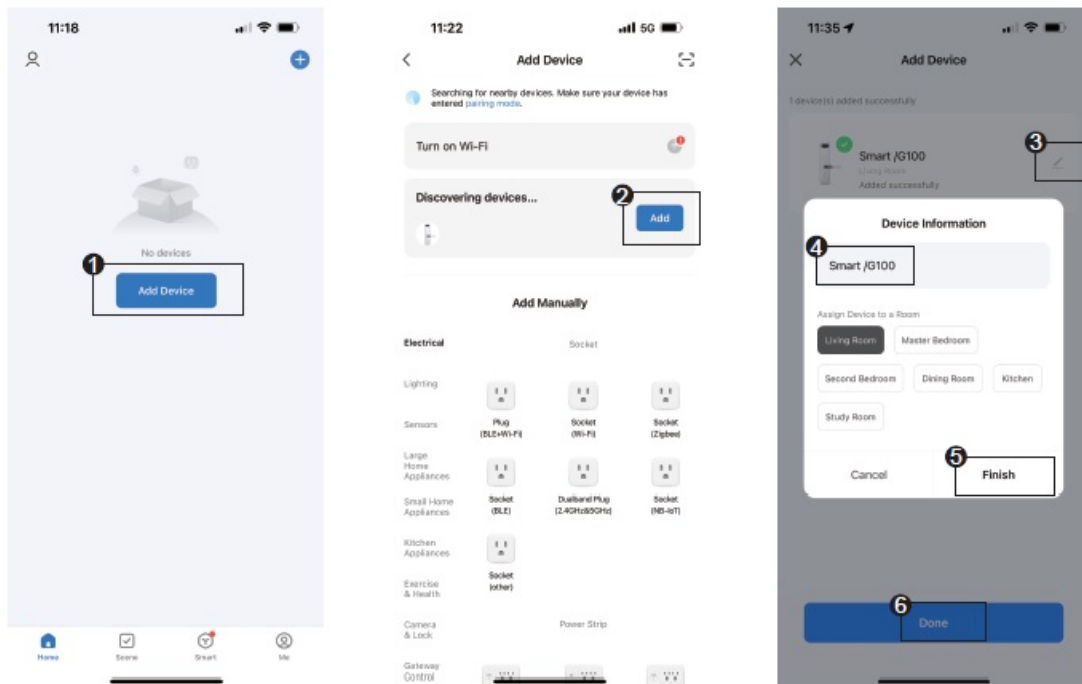


Pair Your Phone with the Smart Lock

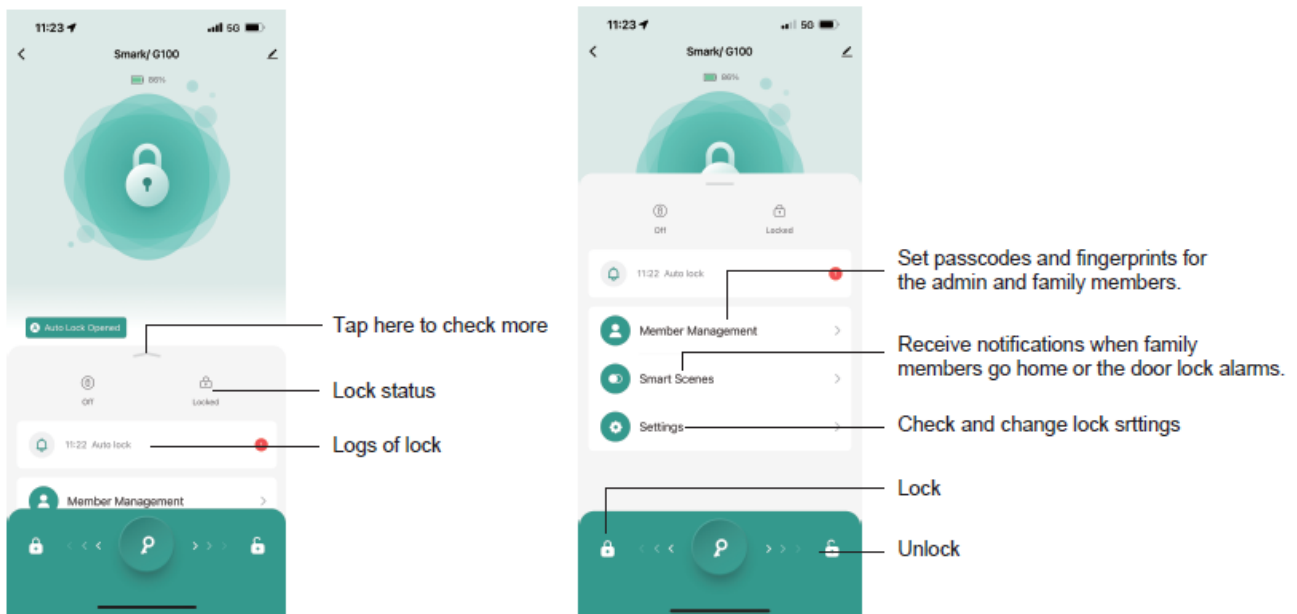
Step 1: Turn on Bluetooth, and press the reset button to wake up the lock, you will hear a voice prompt "Please add Bluetooth Administrator". If not, please reset the lock. Tap Add Device.

Step 2: Add the lock discovered

Step 3: Name the lock and Tap Done.

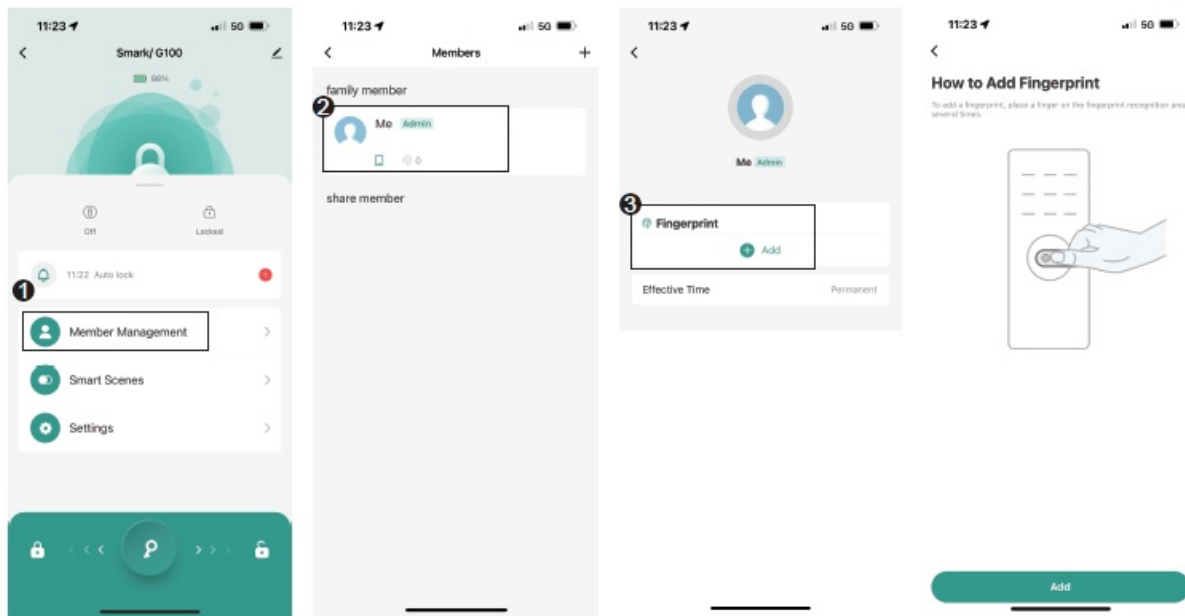


APP Homepage Overview



Set Fingerprints (up to 50 pcs)

- Tap Member Management – Admin – Add Fingerprint – Follow the on-screen instructions to add a fingerprint.

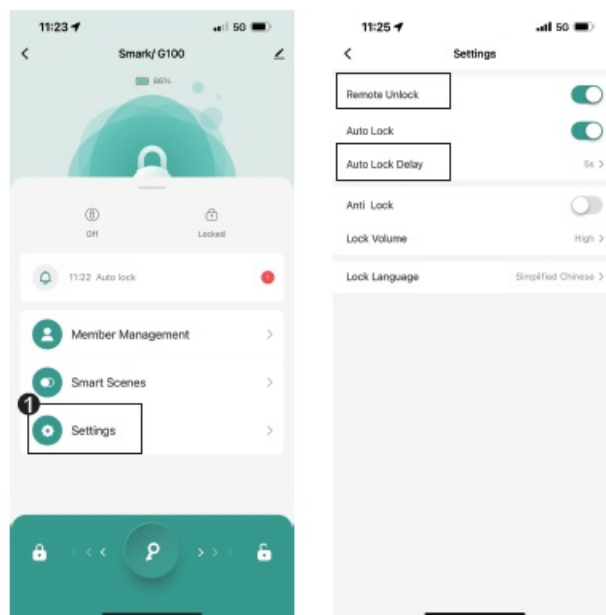


For the lock to better recognize your fingerprints:

1. Make sure the fingerprint sensor and your finger are clean and dry.
2. Place your finger on the fingerprint sensor. Move your finger around to capture different parts of it.

Auto Lock

- Settings→Auto Lock Delay (Change the interval time as needed)
- Settings→Remote Unlock
- **Note:** By default, The lock is set to automatically lock after 5 seconds.



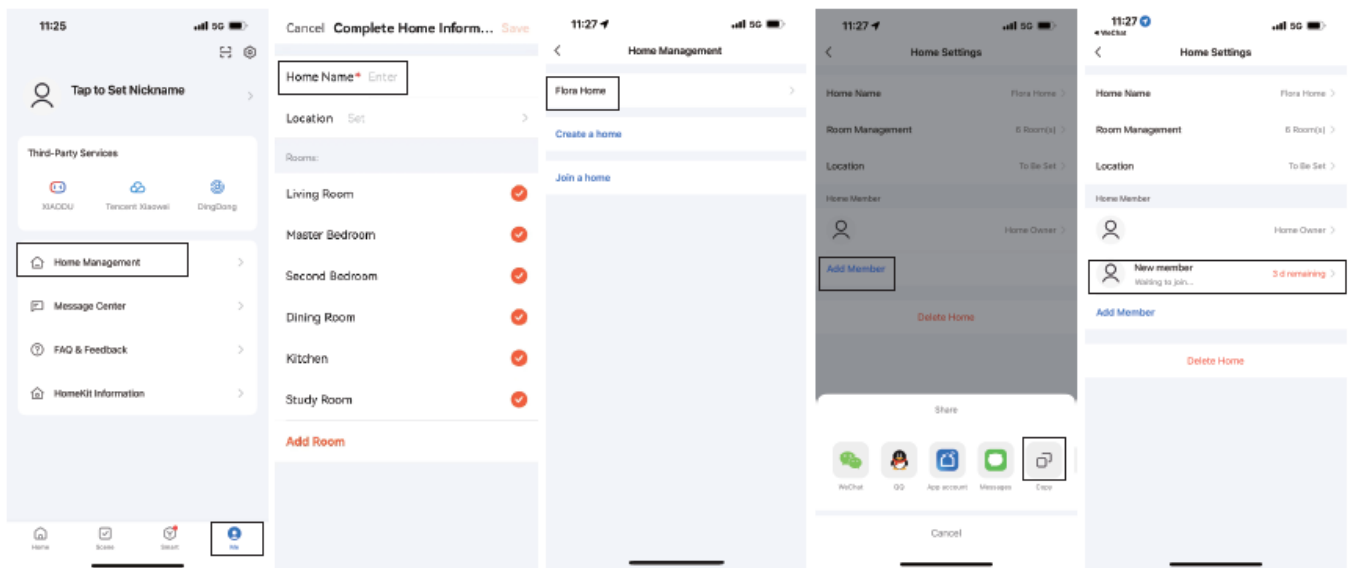
Add Member

1. The homeowner taps Me→Home Management your home or Your Home→Add Member→Tap Copy/Messages →Send the invitation code to the recipient.
2. The recipient taps Me→Home Management a Home and enters the invitation code.

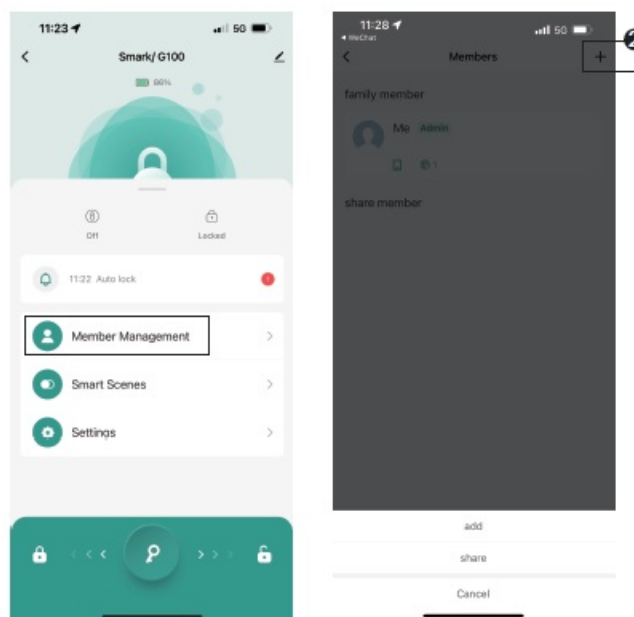
Once the recipient is a home member, you can change the family role of the recipient.

Common member: Use device, use smart setting.

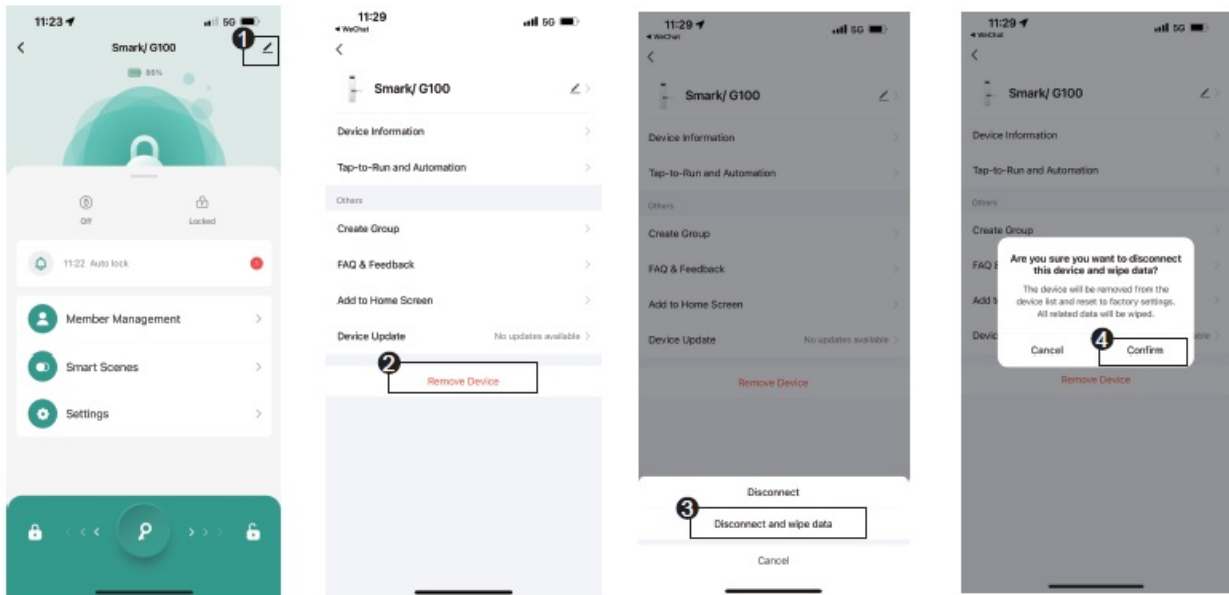
Administrator: Manage device and room, manage smart setting, manage member.t.



Or add it directly on this page



Restore Factory Setting with APP



FUNCTIONAL SETTINGS

Administrator Settings

1. Press the fingerprint reader to awaken the door lock. Within 10 seconds, press the button three times briefly to prompt for user input. Once finished, it will request user information again. If there's no operation within 10 seconds, the setup will end.

Note: Only the first input is for the administrator.

2. Follow the instructions to add administrator information on the app. Please refer to Article 7.4.

Add users' fingerprint

1. After adding the administrator, you can add new user information. under unlocking state, press the button three times briefly within 5 seconds to prompt for user input. Once finished, it will request user information again. If there's no operation within 10 seconds, the setup will be terminated.
2. Follow the instructions to add users' fingerprint on the app. Please refer to Article 7.4

Passage Mode

- ON: Setting via lock: Under unlocking state, long press the button for 2s.
- OFF: Shortly press the button for ≤1s and unlock by fingerprint once to turn Passage Mode off or unlock via APP.

Privacy Mode

ON: Setting via lock: Under locking state, long press the button for 2s.

OFF:

1. Shortly press the button to turn it off;
2. Unlock via APP to turn it off;
3. Unlock the door by administrator's fingerprint once.

Restore Factory Settings

1. Long press the button for 5s within 20s after re-powering up, touch the fingerprint sensor, the initialization is successful.
2. Setting via APP: Remove the device from the APP and clear the data.

FCC STATEMENT

This equipment has been tested and found to comply with the limits for a Class B digital device, pursuant to part 15 of the FCC Rules. These limits are designed to provide reasonable protection against harmful interference in a residential installation.

This equipment generates, uses and can radiate radio frequency energy and, if not installed and used in accordance with the instructions, may cause harmful interference to radio communications.

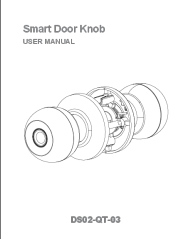
However, there is no guarantee that interference will not occur in a particular installation.

If this equipment does cause harmful interference to radio or television reception, which can be determined by turning the equipment off and on, the user is encouraged to try to correct the interference by one or more of the following measures:

1. Reorient or relocate the receiving antenna.
2. Increase the separation between the equipment and receiver.
3. Connect the equipment into an outlet on a circuit different from that to which the receiver is connected.
4. Consult the dealer or an experienced radio/TV technician for help.

Caution: Any changes and modifications that are not approved by the manufacturer may result in the loss of your permission to operate the device. Restore your lock to factory settings and delete all smart phones and fobs.

Documents / Resources

| | |
|---|--|
|  | <p>Smart Keyless DS02-QT-03 Fingerprint Door Lock with App Control [pdf] Instruction Manual</p> <p>DS02-QT-03 Fingerprint Door Lock with App Control, DS02-QT-03, Fingerprint Door Lock with App Control, Door Lock with App Control, Lock with App Control, App Control</p> |
|---|--|

References

- [User Manual](#)

[Manuals+](#), [Privacy Policy](#)

This website is an independent publication and is neither affiliated with nor endorsed by any of the trademark owners. The "Bluetooth®" word mark and logos are registered trademarks owned by Bluetooth SIG, Inc. The "Wi-Fi®" word mark and logos are registered trademarks owned by the Wi-Fi Alliance. Any use of these marks on this website does not imply any affiliation with or endorsement.