



Smart IR Universal Remote Control User Manual

[Home](#) » [Smart IR](#) » Smart IR Universal Remote Control User Manual

Smart IR Universal Remote Control



Contents [[hide](#)]

[1 Product View](#)

[2 Product installation instructions](#)

[3 Install “Smart Life” App](#)

[4 Connect your Smart IR Controller to your home wifi via “smart Life” Add New Device](#)

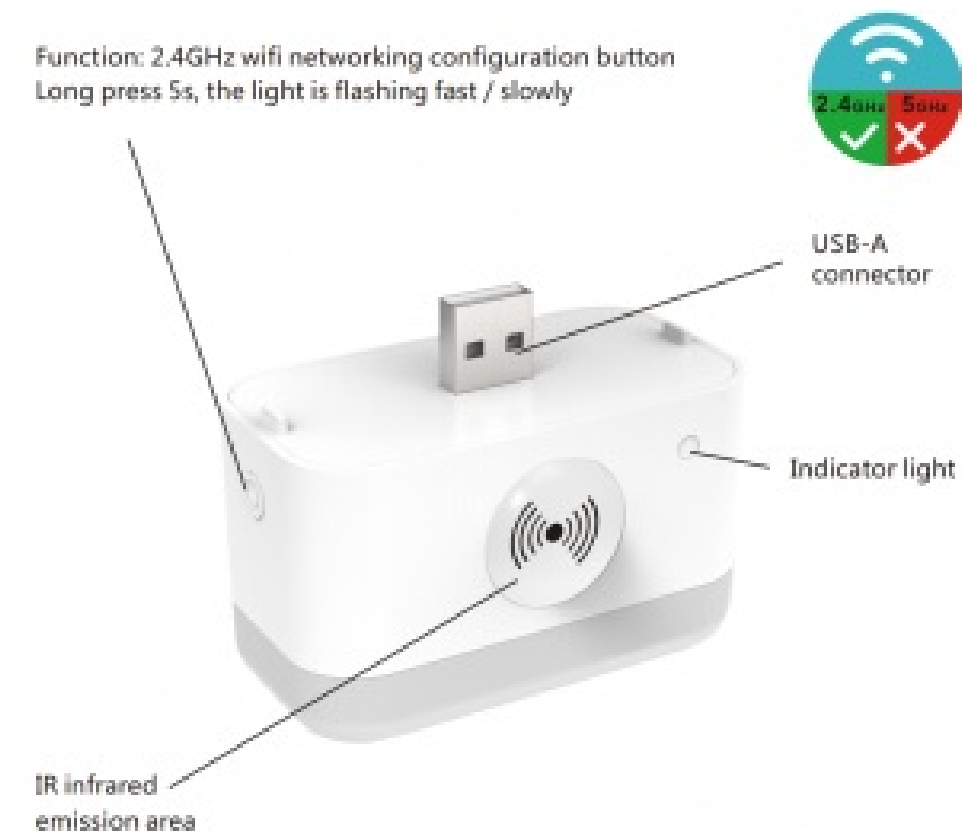
[5 Connect your Smart IR Controller to Alexa](#)

[6 Start to enter this website to see the operation video](#)

[7 Documents / Resources](#)

[8 Related Posts](#)

Product View



Product installation instructions

1. Plug the Smart IR Controller USB-A into Alexa Flex USB or DC 5V 1A power supply
2. APP distribution network press and hold the key for 5 seconds to make the light flash fast/slowly

Install “Smart Life” App

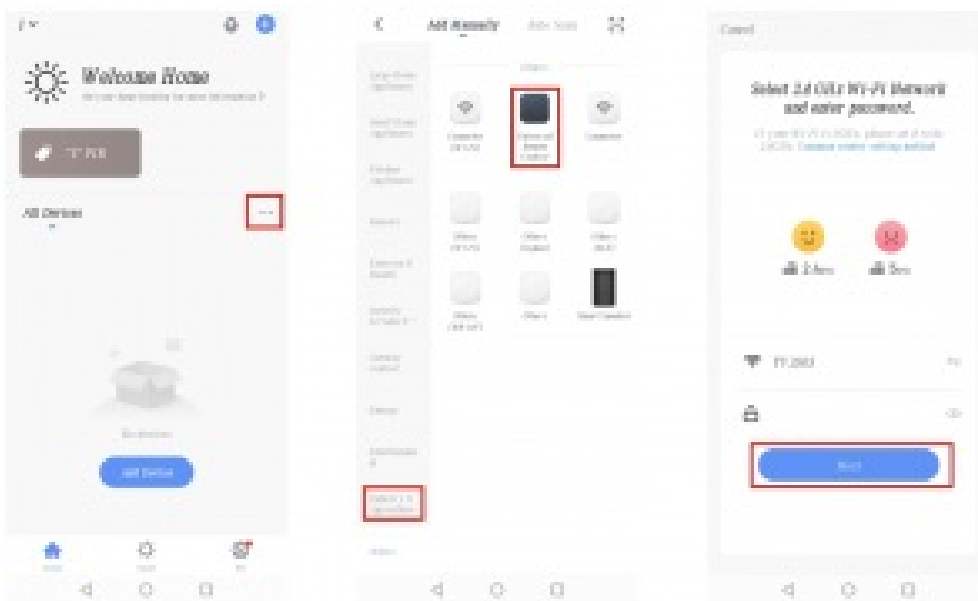
Use your mobile phone to scan the QR code below, or search for “Smart Life” in the Apple Store or Google Play to download and install. Enter your account name and password to log in. Please sign up for an account first if you don't have an account .You can use your mobile phone number or email address with your account name.

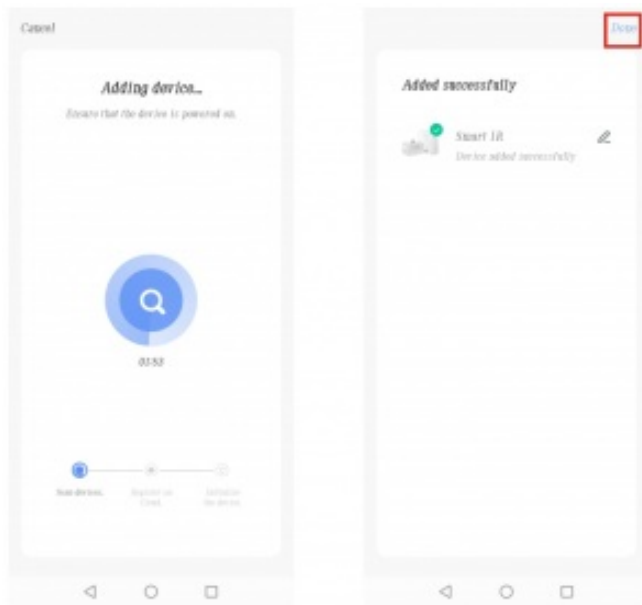


Android 4.4 / iOS 8.0 Above

Connect your Smart IR Controller to your home wifi via “smart Life” Add New Device

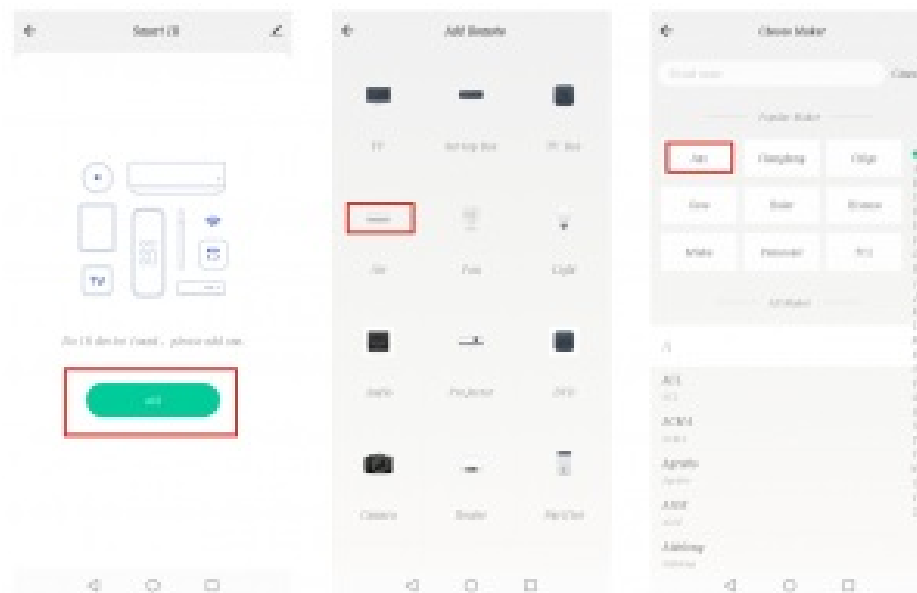
1. Connect your phone to your local wifi 2.4GHz.
2. Press the button for 5 seconds to make the blue light flash quickly. Make sure that the button indicator flashes quickly, the factory default mode is quick flashing. (How to restore the factory settings: long press the button for 5 seconds until the indicator light flashes quickly.)
3. Press “+” in the App’s home page, then select the device type of wifi 2.4GHz version.
4. Select wifi 2.4GHz and enter the correct password. Wait for the configuration to succeed after confirmation.

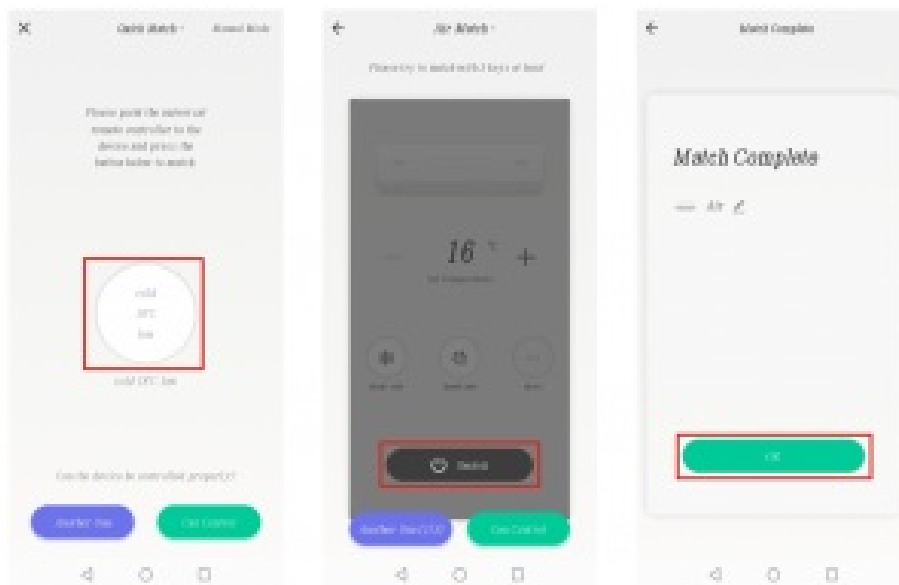




Connect your Smart IR Controller to Alexa

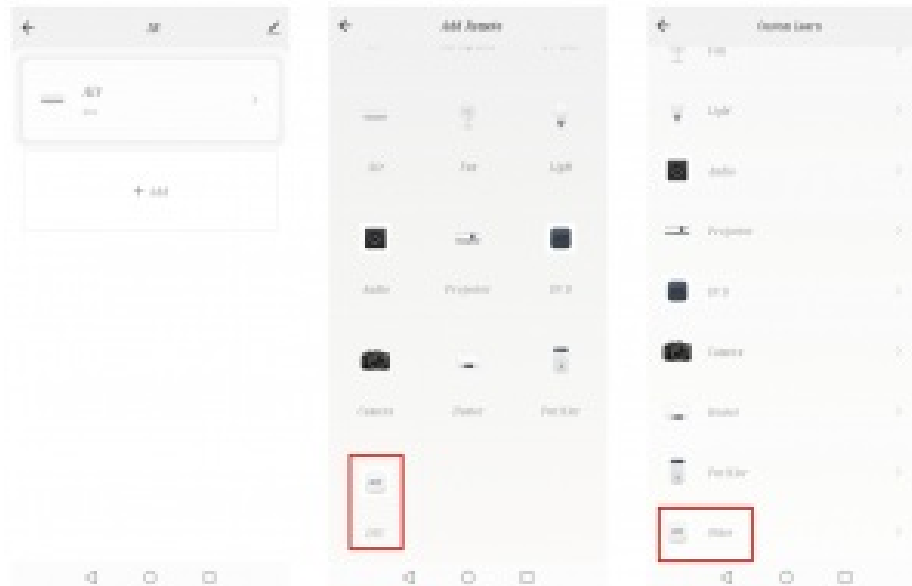
1. Click on the homepage on “Amazon Alexa” App, select “Skills” and search for “Smart Life”. Select “Smart Life” and click “Enable Skills” to enable Smart Life skills.
2. You will be redirected to the account link page. Enter your Smart Life account and password, and don’t forget to choose the country to which your account belongs. Then click on “Link Now” to link to your Smart Life account. You can leave this page when “Alexa has successfully linked to Smart Life” is displayed. (Note: If you have previously linked your Smart Life account, you can use it directly or by clicking “Disable Skills” to delete it.)

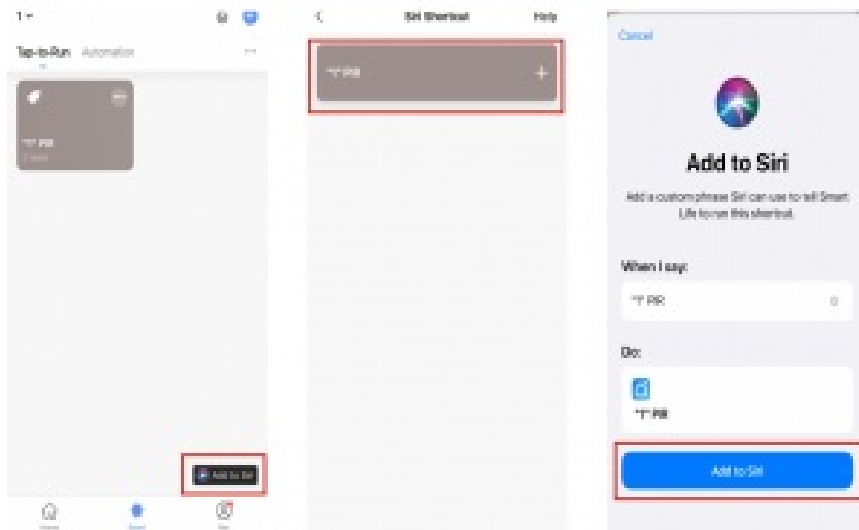




Start to enter this website to see the operation video

1. Remote control on "Smart Life" App After successful configuration by step 4, you can control the wifi 2.4GHz Smart IR Controller on the app.
2. Remote Controller Path DIY Learning: If you cannot find the corresponding IR device brand or model on APP data base, the programmable DIY function allows it to copy the same function from the original remote controller. Widely applicable for most of devices with IR function, such as TV, air conditioning, fan, heater, etc.
3. Voice Control





1) Alexa/Google (Note: Every time you change the device name on the Smart Life App, Echo must rediscover the device before the control.)

Alexa, turn on the tv: Google, turn on the tv

Alexa, turn off the tv: Google, turn off the tv

Alexa, turn on next channel: Google, turn on next channel

Alexa, air conditioning adjusted to 23°: Google, air conditioning adjusted to 23°

Alexa, turn on air conditioning: Google, turn on air conditioning

Alexa, turn off air conditioning: Google, turn off air conditioning

2) Siri

a. Enter Smart Life App

b. In the “Smart” interface, click “+” in the upper right corner

c. Click “Start Click to Run”

d. Set Smart IR Controller on / off

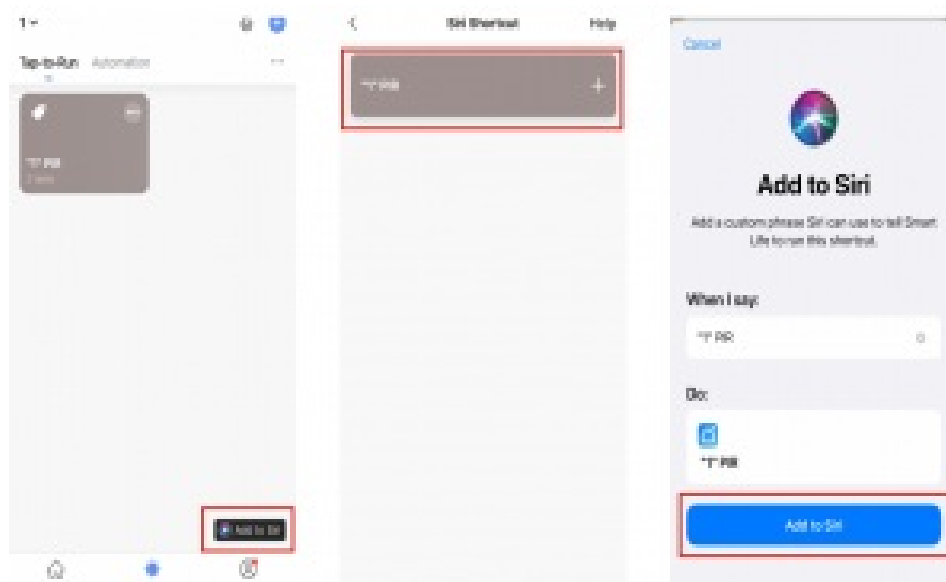
e. Name and set

f. Click “add to Siri” in the lower right corner of “Scene”

g. Set Siri password

h. Finish Advantages: You can set any command.

Example: hi Siri I’m home (the Smart IR Controller will be turned on)





[Smart IR Universal Remote Control](#) [pdf] User Manual
Smart IR Controller, Universal Remote Control