



smart home DC307A Emitter Control System Instruction Manual

[Home](#) » [Smart Home](#) » smart home DC307A Emitter Control System Instruction Manual 

Contents

- 1 smart home DC307A Emitter Control System
- 2 FEATURES
- 3 Matchable R Tubular Motor Set up
- 4 Matchable DC227/DC228 Tubular Motor Set up
- 5 Product Specifications:
- 6 Frequently Asked Questions (FAQ):
 - 6.1 Q: Are the remote controls interchangeable between models?
 - 6.2 Q: What should I do if the remote control does not operate the motor?
 - 6.3 Q: Can I use rechargeable batteries in the remote control?
- 7 Documents / Resources
 - 7.1 References

smart home DC307A Emitter Control System

INSTRUCTION MANUAL

DC307A; DC313

FEATURES

- Input vottage: 3V(CR2430)
- Transmitting friquency: 433.92MHz

- Transmitting 20 milliwatt
- Operating temperature: -20C to 55C
- Transms.slom di mince: 200 meten open offk:e 3li ~non two walls

Transmitter: You can choose single channel (0c30s(A/6)), five channels(cs0s4/G/e)), Each indicator light means one control channel. Press “channel choose” button P1-(indicator move left side) or P1+(indicator move right side) to change the channel. On the analogy of this, loose finger when the indicator light move to suitable channel that you select effective channel. All indicator lights flash that means all channels is effective(group control state).

Transmitter: You can choose nine channels (0c307(4/G)), fifteen channels(0c313(4/G/E)), One number of LCD screen means one control channel. Press“channel choose”button P1-(number descending) or P1+(number increasing) to change the channel, On the analogy of this,loose finger when the indicator light move to suitable channel that you select effective channel.

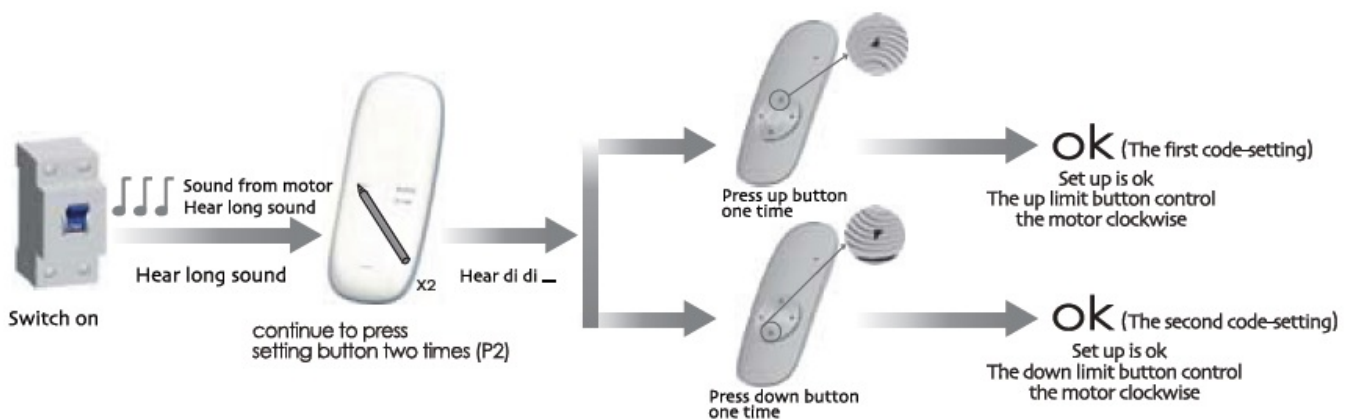
If LCD screen number show o that means all channels if effective(group control state).

HB Notice: transmitter Do not exposed to moisture and strike, so as not to affect life.

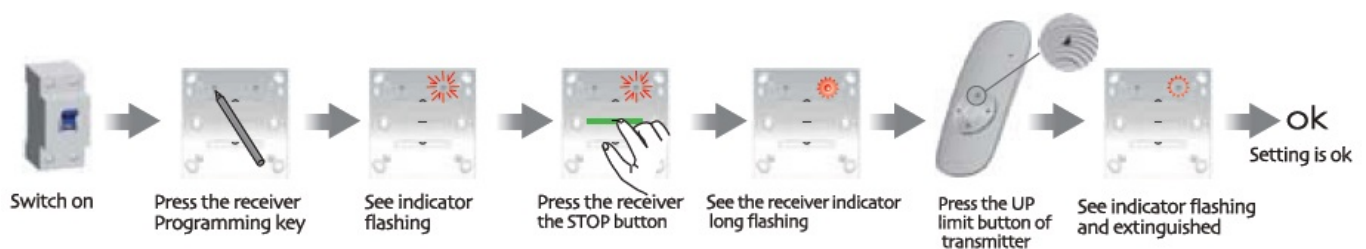
When you use transmitter, if found emission distance obviously short or less sensitive, please change another same new battery. Please have batteries for recycling.

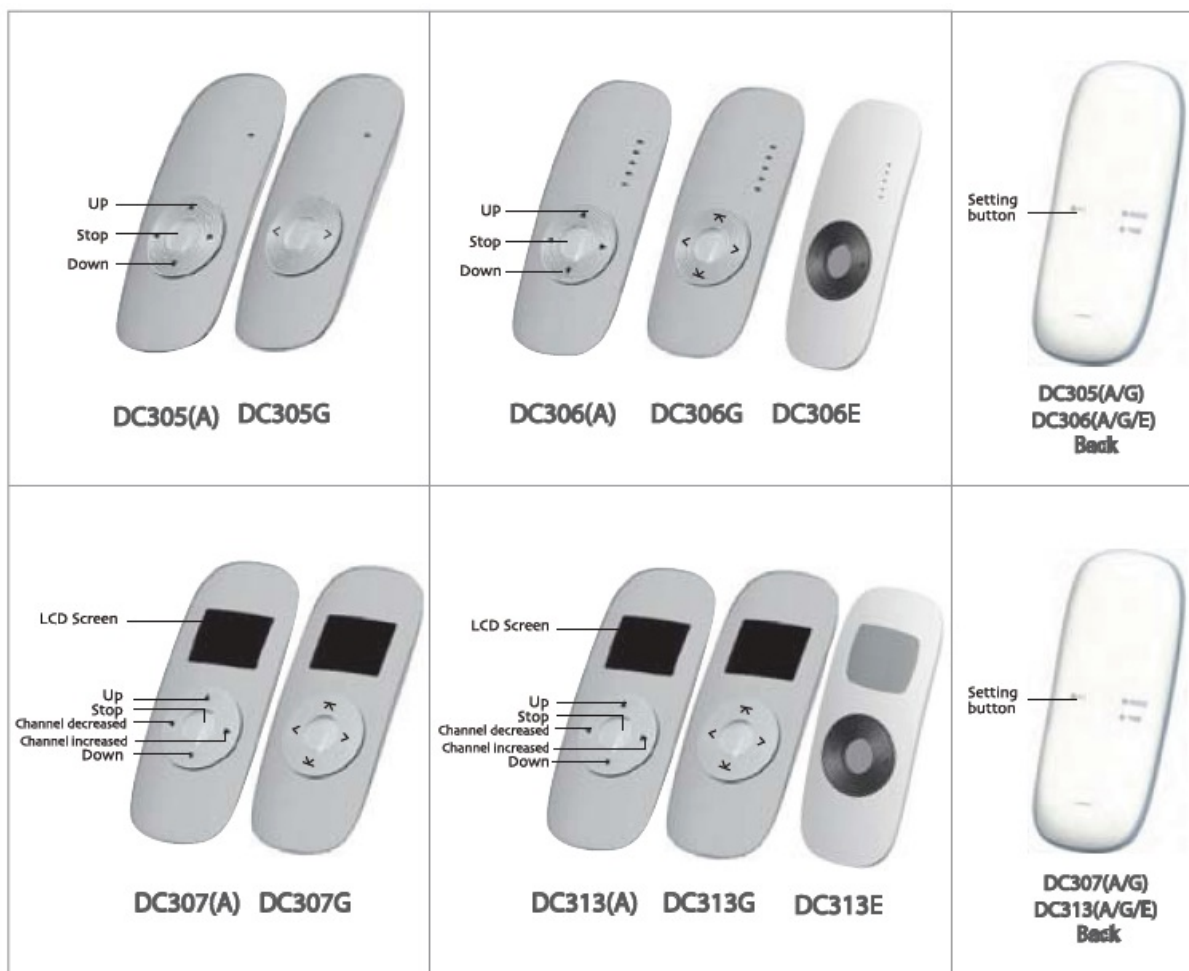
Matchable R Tubular Motor Set up

Delet all the dates and the new emitter has been programmed



Matchable DC227/DC228 Tubular Motor Set up





DC305G DC306G DC306E DC307G DC313G DC313E and DC305(A) DC306(A) DC307(A) DC313(A) have different button mark, but the function is the same.

Caution:

This device complies with Part 15 of the FCC. Operation is subject to the following two conditions:

- (1) this device may not cause harmful interference,
- (2) this device must accept any interference received, including interference that may cause undesired operation.

Any changes or modifications not expressly approved by the party responsible for compliance could void the users authority to operate the equipment.

NOTE: This equipment has been tested and found to comply with the limits for a Class B digital device, pursuant to part 15 of the FCC Rules. These limits are designed to provide reasonable protection against harmful interference in a residential installation. This equipment generates, uses and can radiate radio frequency energy and, if not installed and used in accordance with the instructions, may cause harmful interference to radio communications. However, there is no guarantee that interference will not occur in a particular installation. If this equipment does cause harmful interference to radio or television reception, which can be determined by turning the equipment off and on, the user is encouraged to try to correct the interference by one or more of the following measures:

- Increase the separation between the equipment and receiver.
- Connect the equipment into an outlet on a circuit different from that to which the receiver is connected.
- Consult the dealer or an experienced radio/TV technician for help.

Product Specifications:

- Frequency: 433.92MHz
- Models: DC305(A/G), DC307(A/G), DC306(A/G/E), DC313(A/G/E)
- Power Source: 3V (CR2430 battery)
- Emitter Specification: 5
- Compatible with DC227/DC228 Tubular Motor and DC136 Tubular Motor

Frequently Asked Questions (FAQ):

Q: Are the remote controls interchangeable between models?

A: Yes, the remotes are interchangeable as long as they have similar functions, despite having different button marks.

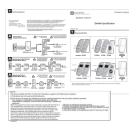
Q: What should I do if the remote control does not operate the motor?

A: Check the battery level and replace it if necessary. Ensure that the remote is properly paired with the compatible tubular motor.

Q: Can I use rechargeable batteries in the remote control?

A: It is recommended to use a fresh CR2430 battery for optimal performance. Rechargeable batteries may not provide sufficient power.

Documents / Resources

	<p>smart home DC307A Emitter Control System [pdf] Instruction Manual DC307A, DC307A Emitter Control System, Emitter Control System, Control System, System</p>
-------------------------------------------------------------------------------------	------------------------------------------------------------------------------------------------------------------------------------------------------------------------------------

References

- [User Manual](#)

[Manuals+.](#) [Privacy Policy](#)

This website is an independent publication and is neither affiliated with nor endorsed by any of the trademark owners. The "Bluetooth®" word mark and logos are registered trademarks owned by Bluetooth SIG, Inc. The "Wi-Fi®" word mark and logos are registered trademarks owned by the Wi-Fi Alliance. Any use of these marks on this website does not imply any affiliation with or endorsement.