



smart access technology 1 Rotary Lock System Installation Guide

[Home](#) » [smart access technology](#) » smart access technology 1 Rotary Lock System Installation Guide 

Contents

- [1 smart access technology 1 Rotary Lock System](#)
- [2 Introduction](#)
- [3 Electrical connections](#)
- [4 Verifying Power](#)
- [5 Installation on Furniture](#)
- [6 Sample of Installation](#)
- [7 Documents / Resources](#)
- [8 Related Posts](#)



smart access technology 1 Rotary Lock System



Introduction

The Smart Access system lets you control a series of locks via your smartphone or computer using Bluetooth and Wi-Fi (WiFi with Alexa connectivity coming soon). Please register your device and sign up for email notifications so we can let you know when that feature is available).

This manual will cover how to set up your system, from electrical connections to the installation of furniture.

Note: It is recommended to set up the system on a work surface before installing in a cabinet or drawer.

Download the app, register at least two fingerprints and test the system with the app and finger-touch sensor.

When you are comfortable with the operation and you are familiar with it proceed to installation.

Electrical connections

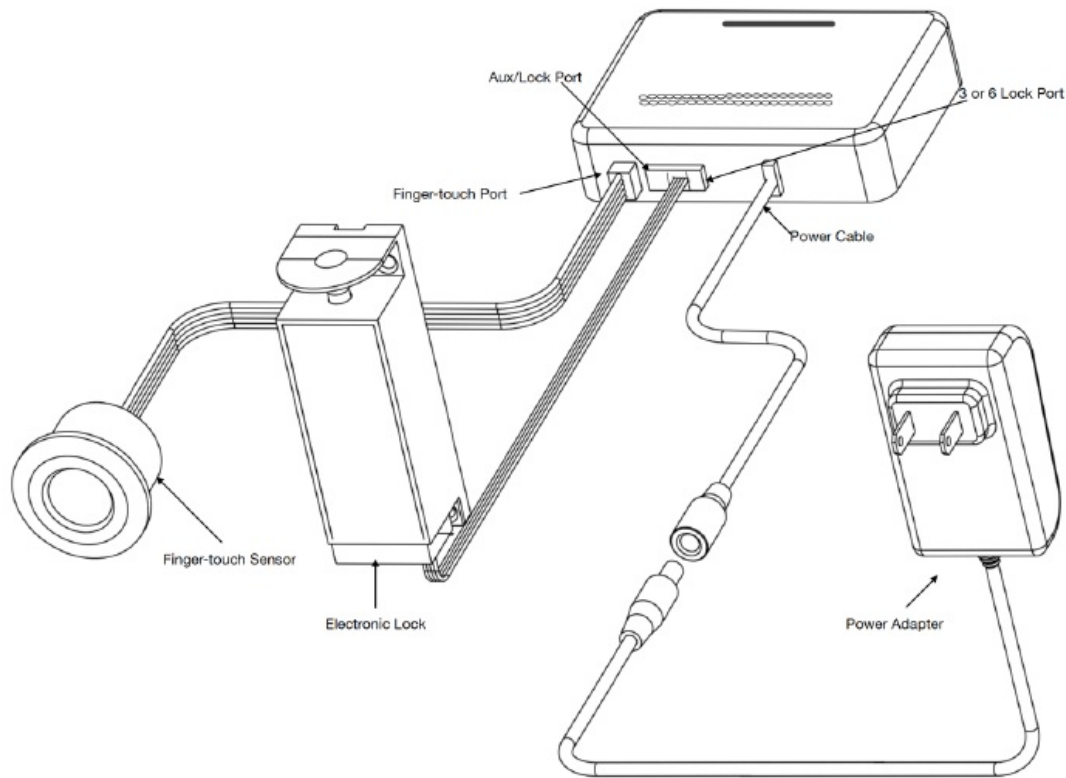
The first step to using your new Smart Access device is to connect the external peripherals as shown below. Each connection has its own specially shaped connector.

The first 4-pin connection (to the right of the finger-touch sensor) can be utilized for an accessory (Aux/Lock Port) such as a light. The other 4-pin connections are intended for locks. However, all 4-pin connectors can be used interchangeably for either an accessory or a lock without restriction (Currently all 4-pin connectors are controlled through the finger-touch sensor).

Connect Finger-touch sensor and locks to the electronic controller. If you do not intend to utilize all lock ports leave the spare connectors plugged in to the controller to protect the pin ports from damage and dust.

Make sure everything is properly connected before plugging in the power adapter to an outlet.

The Finger-touch sensor must be connected to the electronic controller prior to connecting the power adapter to an outlet.



Verifying Power

A blue light will shine from the electronic controller case immediately after power is applied from the power supply. 1-2 seconds later the finger-touch sensor will quickly flash purple, indicating the system is operating normally.

Note: The finger-touch sensor is required to do a full password reset so it is recommended to store at least two fingerprints during the initial setup. For security reasons only the first three fingerprints recorded have access to do a password reset.



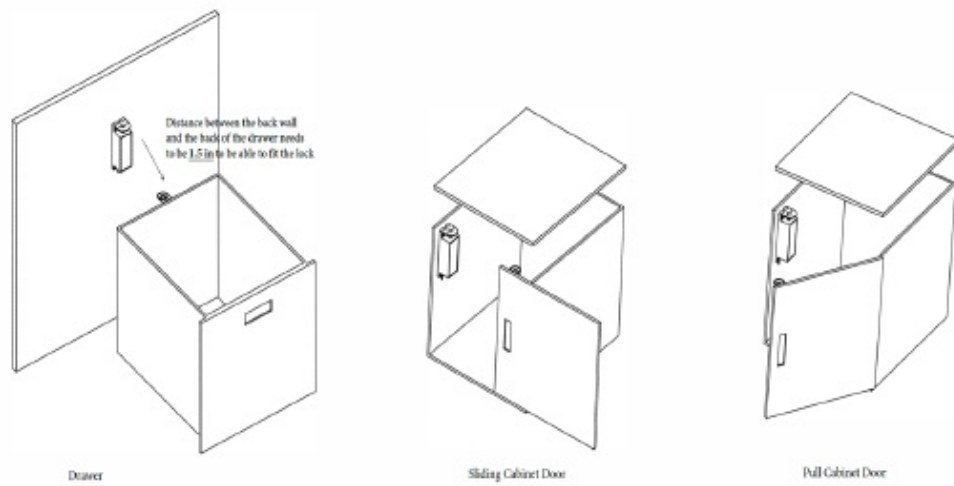
Installation on Furniture

The system can be installed on all types of furniture with doors or drawers that are in close proximity to a power outlet.

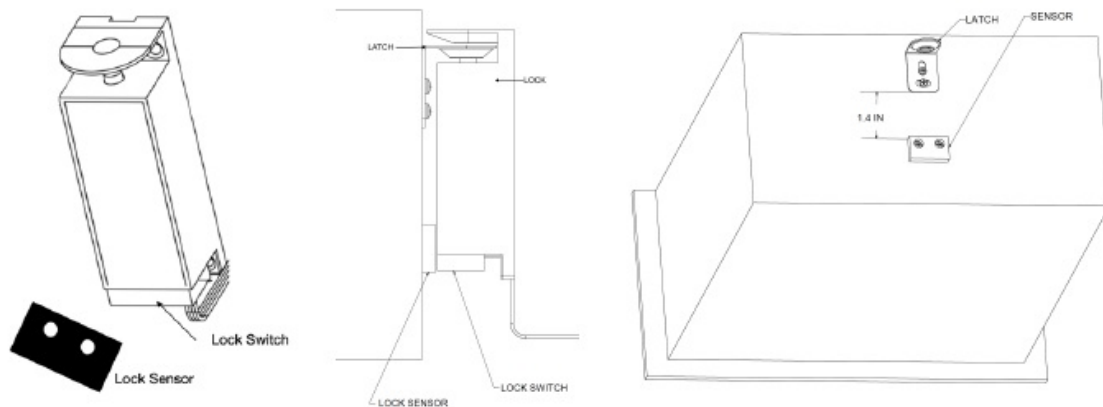
For metal, please make sure you are installing the appropriate Electronic Controller Model with the external antenna designed for metal furniture and cabinetry. Please contact us for more information.

Note: It is recommended to have a professional install the Smart Access System.

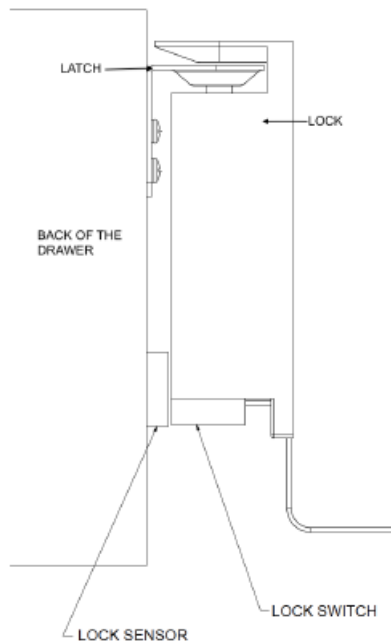
If the locks are going to be installed on the back of a drawer it is very important to make sure there is **1.5 inches** between the back of the drawer and the back wall so that there is enough space to fit the lock. Shims can be fabricated to create the proper spacing if needed. For sliding cabinet doors and pull cabinet doors you can use the template provided with each lock.



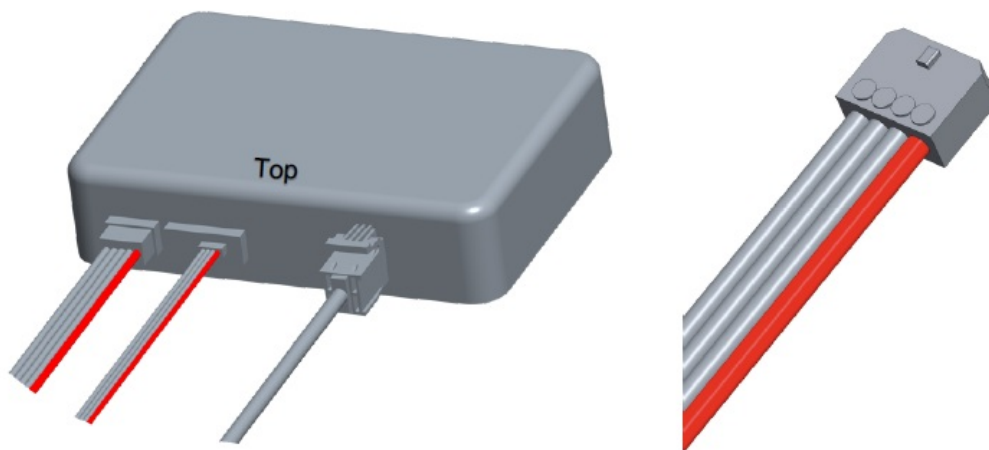
The sensor for the lock switch needs to be placed below the latch at the same level (right in front) of the switch on the lock with a distance of 1.4 in between the bottom of the latch and the top of the sensor. The switch is responsible for activating the audible alarm and sending notifications if the door is left open or forced open.



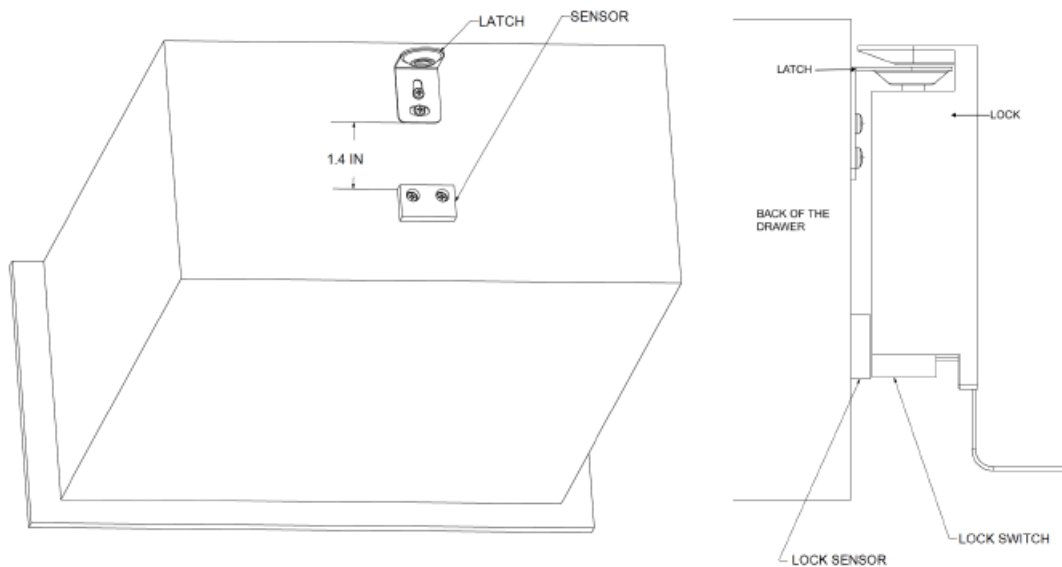
1. Identify the location where the Electronic controller will be installed and mount it.
2. Identify the location where you want to install the finger-touch sensor.
3. Drill a pilot hole with a 3/16 or 5mm drill bit then use a 25mm drill bit to install the finger-touch sensor.
Depending on the material thickness it may be required to drill a flat bottom hole from the back of the wall or inside of the cabinet using a flat bottom hole drill bit of approx. 35mm in order to put the nut on the finger-touch sensor to hold it secure and in place.
4. Measure the length of the wire needed to go from the finger-touch sensor location to the electronic controller.
The standard wire length for the finger-touch sensor is 36". If a longer wire is required please contact customer support.
5. Identify the location where locks will be installed and measure the distance of the locks to the electronic controller. The standard wire length for the locks is 24". If a longer wire is required please contact customer support. Make sure you consider the height of the back of the drawer and confirm both latch and sensor will fit. Adjust location of the lock accordingly so that the lock sensor can be installed right on the front of the lock switch. You may use the provided double-sided sticky tapes to position the lock, latch, and sensor.



6. Cut the extra wire length with wire cutters (we recommend leaving an extra inch).
7. Use the spare connectors on the recently cut wire by squeezing the connector with a pair of pliers. Make sure that the wire is exactly in the same position as it was on the connector that was cut (**red wire on the right when connected to the controller**).

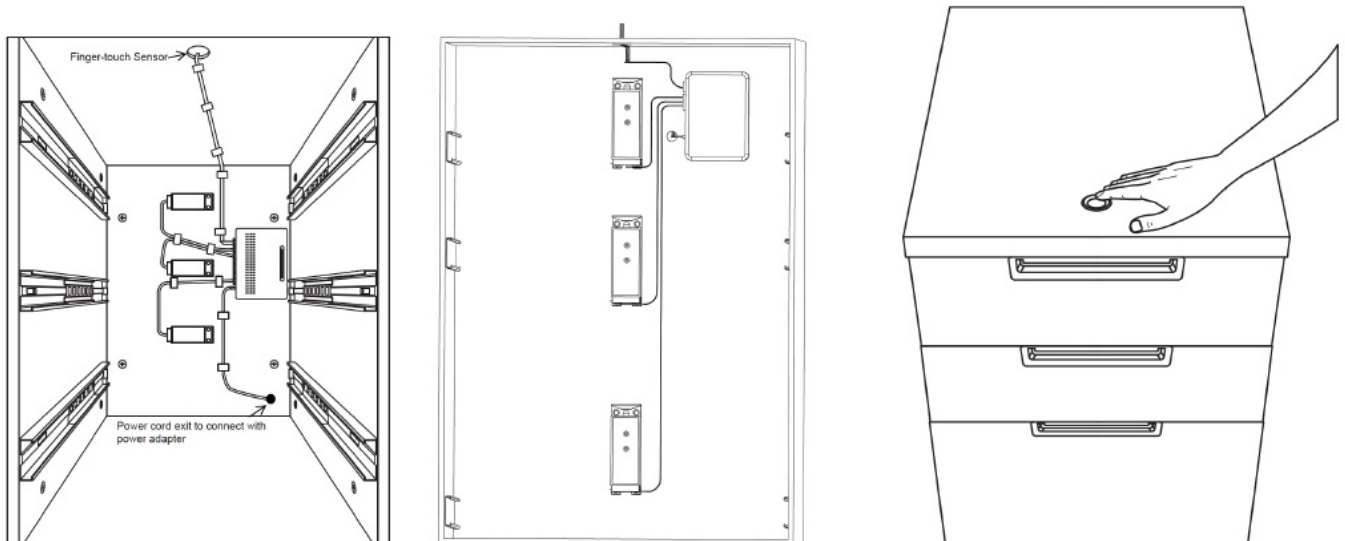


8. Use 3M adhesive cable clips to rout the wire along the walls. (We recommend using the screws provided with the cable clips, over time adhesive tape may come off and cause wire or system damage). For a tighter fit, you can use the provided foam.
9. When possible, drill a small hole to allow the power cord to exit the cabinet to be externally connected to the power adapter.
Note: It is recommended to allow access to the power cord so that in the event there is a power outage the electronic controller can receive power using the USB cable provided and an external cell phone power bank.
10. Plug the power adapter into the wall and test the system with both the app and the finger-touch sensor.
11. After the Electronic Controller, Finger-touch sensor, and locks have been installed, install the latch and the sensor on the door or drawer. (You may use the guide sticker for positioning and location on the slide and pull cabinet doors. You may also use the provided double-sided sticky tape to help position the latch and sensor).





12. Make sure the latch is properly aligned with the lock and the sensor is properly aligned with the switch.

Sample of Installation



Documents / Resources

 System Installation Manual 	smart access technology 1 Rotary Lock System [pdf] Installation Guide 1 Rotary Lock System, Lock System
---	--