



C2240MUS
Omnidirectional CCTV
Gateway



SmallRig RS 2 Focus Control Handle Instruction Manual

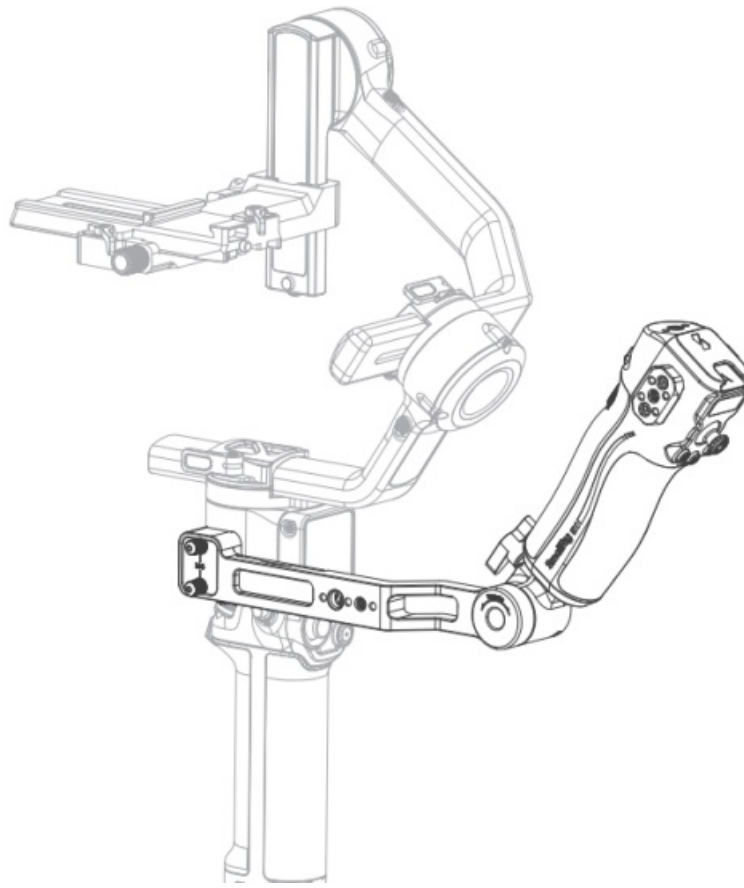
[Home](#) » [SmallRig](#) » SmallRig RS 2 Focus Control Handle Instruction Manual 

Contents

- [1 SmallRig RS 2 Focus Control Handle](#)
- [2 Operating Instruction](#)
- [3 In the Box](#)
- [4 Compatibility](#)
- [5 Product Dimension](#)
- [6 Product Details](#)
- [7 Product Function](#)
- [8 Product Use](#)
- [9 Specifications](#)
- [10 CONTACT](#)
- [11 Documents / Resources](#)
 - [11.1 References](#)
- [12 Related Posts](#)

SmallRig

SmallRig RS 2 Focus Control Handle



Operating Instruction

- Thank you for purchasing SmallRig's product.
- Please read this Operating Instruction carefully.
- Please follow the safety warnings.

Warning

- Please keep the product dry and avoid contact with water or other liquids.
- Do not use the product in high temperature, humid, or dusty environments.
- Keep the product away from flammable materials and avoid prolonged use.
- If any damage is found on the product, please stop using it immediately and contact the after-sales service department for repair or replacement.



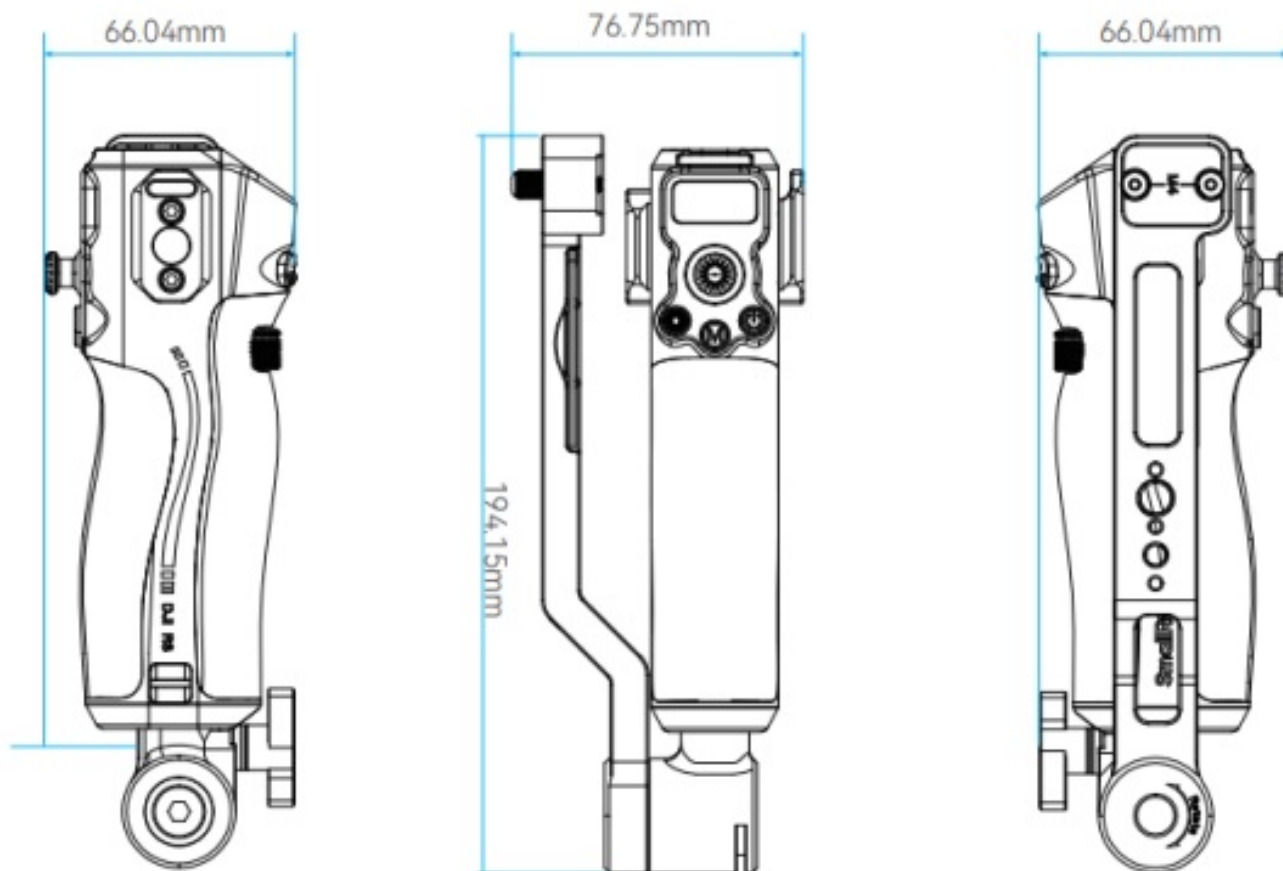
Do not disassemble the product. If you suspect there is any problem with the product, please contact the purchasing platform to apply for after-sales processing; Only by connecting the slider on the left side of the DJI stabilizer and tightening the knob with a wrench can the product control the DJI stabilizer correctly; This product is dedicated to controlling DJI RS 2 / RS 3 Pro / RS 4 / RS 4 Pro stabilizer.

In the Box

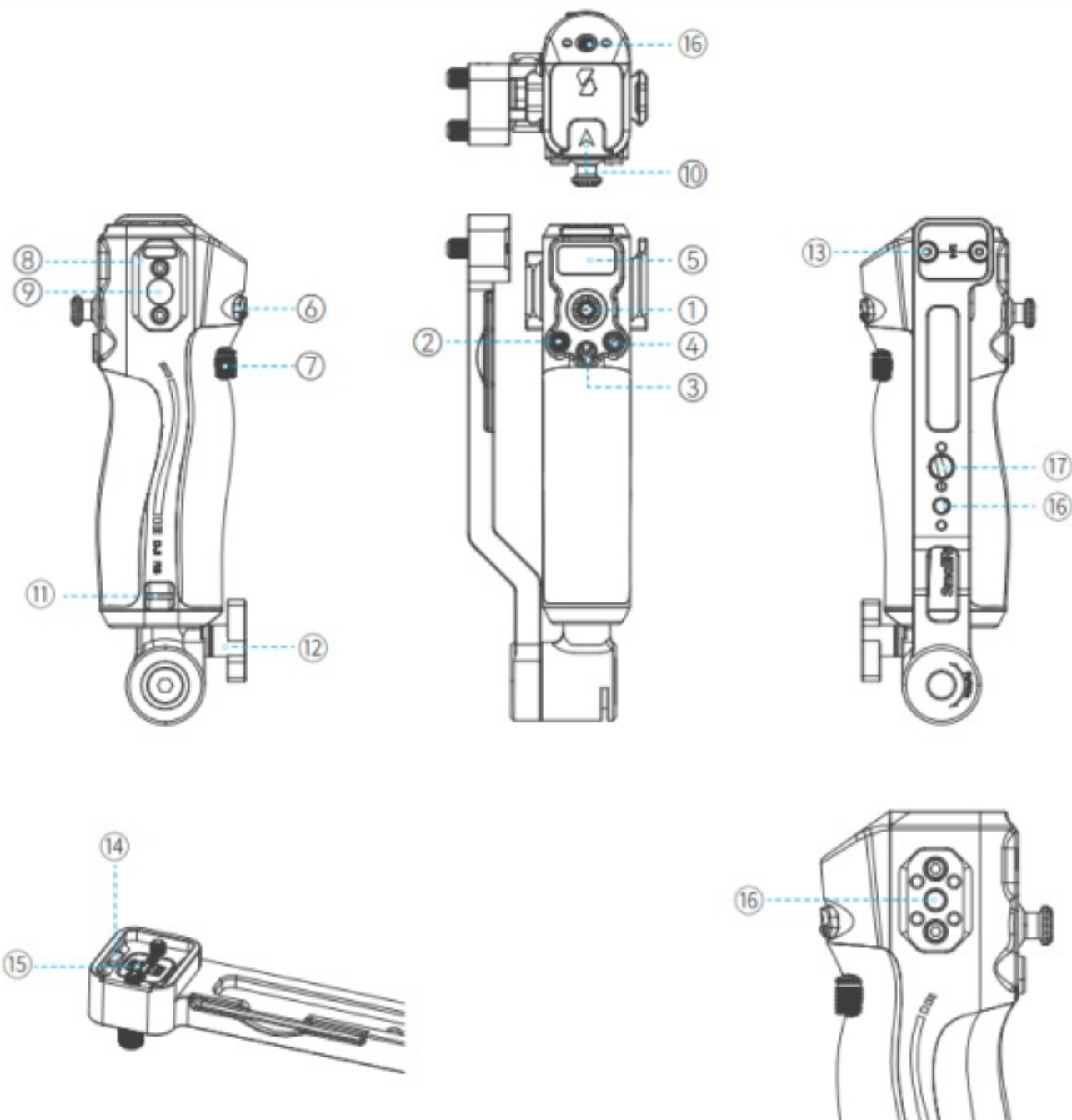
- Stabilizer and coke pot handle × 1
- Guarantee Card × 1

Compatibility

Product Dimension



Product Details



1. Joystick
2. Record button
3. Mode Switching
4. Sleep Mode
5. Display
6. Trigger Button
7. Scroll Wheel
8. Sliders
9. QD interface
10. Cold shoe mount
11. Wrist strap hole
12. Locking knob
13. M4 anti-slip screw
14. Limit column

15. Pin
16. 1/4"-20 positioning hole
17. 3/8"-16 positioning hole

Product Function

1. **Joystick:** Push the joystick up and down to control the gimbal's pitch axis movement, and push the joystick left and right to control the gimbal's translation axis movement. Joystick calibration method: [Press the trigger button three times in a row, and keep pressing the fourth time. The calibration icon will be displayed on the



screen . Then the joystick will rotate more than 6 circles at the extreme position and stop. The joystick will stay in the middle position for 20 seconds without any operation, waiting for the calibration to complete. If














the calibration fails, the calibration error will be displayed and recalibration is required. If the calibration is successful, it will not be displayed.

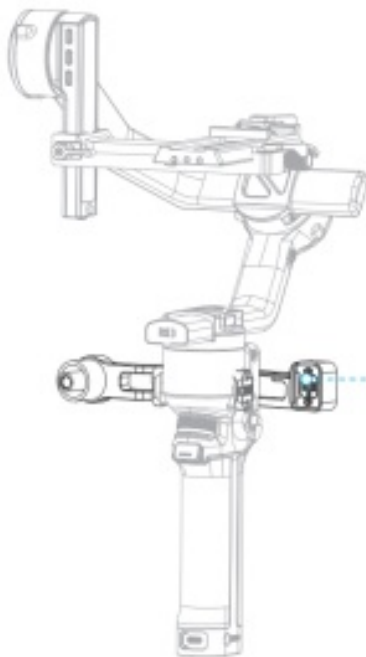
2. **Recording/Photographing Button:** This button has two strokes. Pressing it lightly (the first stroke) controls the camera to autofocus, and pressing it hard (the second stroke) controls the camera to start recording. After the recording starts, the recording time is displayed. Pressing it again stops recording, and pressing it hard and long controls the camera to take photos.
3. **Mode switch (M key):** Single-click to switch modes, double-click to enter/exit vertical shooting mode (RS 4 /RS 4 Pro does not have this function), triple-click to enter/exit 360° rotation mode, long-press the M button to enter/release to exit sports mode, and double-click the trigger button while long-pressing M to lock (exit lock) sports mode.
4. **Sleep mode:** Single or double-click the power button to enter /exit sleep mode.
5. **Display screen:** Displays the current mode of the controller. The screen lights up to indicate a normal connection.
6. **Trigger button (return to center/lock):** Single click: install DJI LiDAR focus rangefinder or Ronin image transmission and turn on, turn on or off ActiveTrack; Double click: return the gimbal to center; Triple click: enter selfie mode; Long press: lock the gimbal's three axes; Long press the trigger button and click the M button to lock or exit the lock gimbal (lock without pressing the trigger button).
7. **Scroll wheel:** The default function is to control focus/zoom by wire. You can change the settings on the touch screen of the DJI RS 2 / RS 3 Pro / RS 4 / RS 4 Pro stabilizer. You can set it to focus motor, control focus/zoom by wire, adjust the camera ISO, aperture, shutter speed, and control the roll axis, pan axis or pitch axis. You can change the corresponding scroll wheel speed, smoothness, and forward and reverse direction according to the settings on the touch screen;
8. **Slide bar:** The side slide bar can be expanded with focus wheel, mobile phone holder, monitor and other equipment.
9. **QD interface:** There is a QD interface on the right slider, which can be used to connect the stabilizer shoulder strap 4118.
10. **Cold shoe mount:** 2905B can be used to connect a 5-inch monitor. The interface can only bear 1kg and cannot be overloaded.
11. **Wrist strap hole:** PAC2456B can be used to make holding more comfortable and safer.
12. **Locking knob:** After loosening the knob, control the angle of the handle.

13. **M4 anti-slip screw:** must be connected to the left slider of the stabilizer.
14. **Limit column:** The limit column must correspond to the Nato interface on the DJI stabilizer, otherwise the stabilizer cannot be controlled.
15. **Pin:** Do not be too violent during disassembly or assembly, otherwise the Pin interface will be damaged.

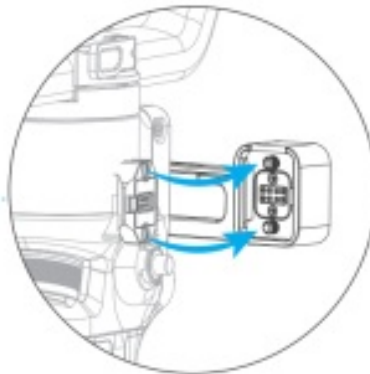
Icons

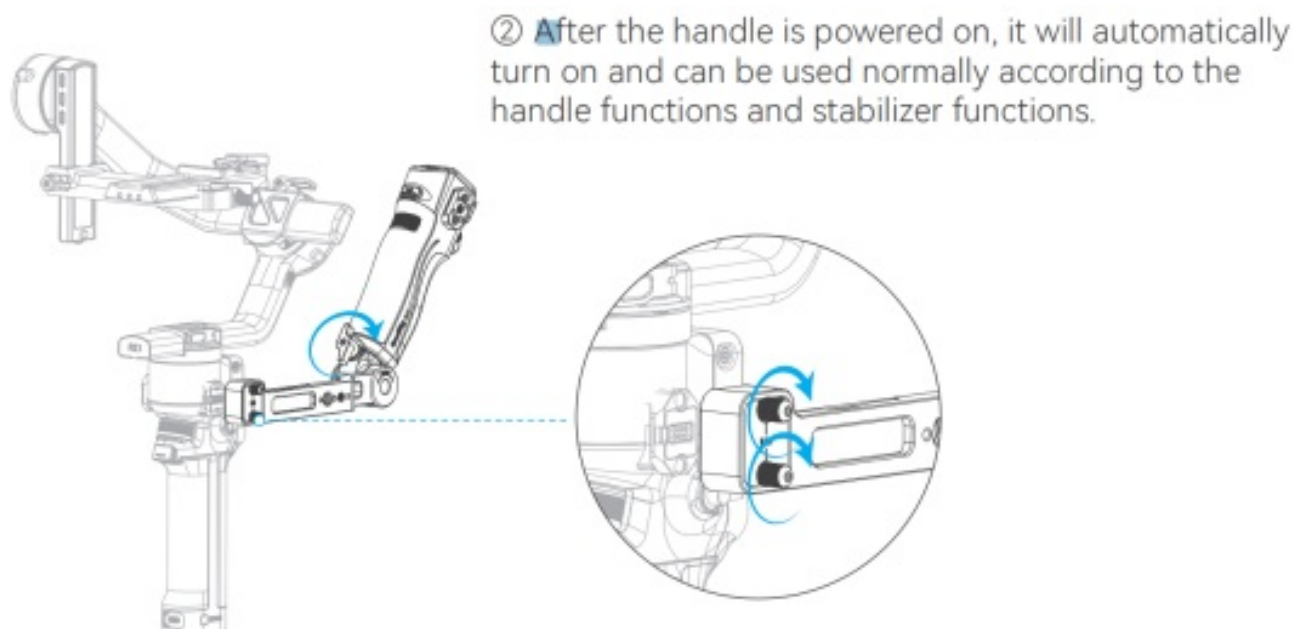
- ① " M1 ", " M2 ", " M3 ": Mode indicator, displayed after the stabilizer enters sleep mode "  "
- ② "  " Icon means connected, "  " icon means connection failed;
- ③ "  " 360 degree rotation mode;
- ④ "  " Vertical shooting mode;
- ⑤ "  " Lock Mode;
- ⑥ "  ", "  " Displayed when entering joystick calibration, "  " and displayed when operating the joystick after calibration fail; 
- ⑦ "  " Press on/off for a long time.

Product Use



- ① On the left side of the stabilizer, tighten the handle connecting arm with the screw and the mounting knob must be tightened.





Specifications

Product size	194 × 76.8 × 66.5mm / 7.6 × 3.0 × 2.6in
Product weight	380.0 ± 5.0g / 13.4 ± 0.2oz
Material	Aluminum alloy, Plastic
Recommended charging ambient temperature	5°C - 40°C / 41°F - 104°F
Rated power	0.5W
Maximum allowable input current	≤ 1A
Allowable input voltage range	9V-17V

CONTACT

Manufacturer Email: support@smallrig.com

Manufacturer: Shenzhen Leqi Innovation Co., Ltd.

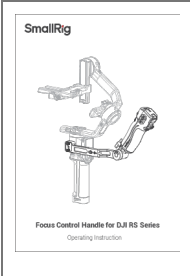
Add: Rooms 101, 701, 901, Building 4, Gonglianfuji Innovation Park, No. 58, Ping'an Road, Dafu Community, Guanlan Street, Longhua District, Shenzhen, Guangdong, China.

Consignor: Shenzhen LC Co., Ltd.

Add: Room 201, Building 4, Gonglianfuji Innovation Park, No. 58, Ping'an Road, Dafu Community, Guanlan Street, Longhua District, Shenzhen, Guangdong, China.



Documents / Resources

	<p>SmallRig RS 2 Focus Control Handle [pdf] Instruction Manual</p> <p>RS 2, RS 3 Pro, RS 4, RS 4 Pro, RS 2 Focus Control Handle, RS 2, Focus Control Handle, Control Handle, Handle</p>
---	---

References

- [User Manual](#)

[Manuals+](#), [Privacy Policy](#)

This website is an independent publication and is neither affiliated with nor endorsed by any of the trademark owners. The "Bluetooth®" word mark and logos are registered trademarks owned by Bluetooth SIG, Inc. The "Wi-Fi®" word mark and logos are registered trademarks owned by the Wi-Fi Alliance. Any use of these marks on this website does not imply any affiliation with or endorsement.