

SmallRig
LQ-P1367-18 ARRI
Locating Side Handle



SmallRig LQ-P1367-18 ARRI Locating Side Handle Instruction Manual

[Home](#) » [SmallRig](#) » SmallRig LQ-P1367-18 ARRI Locating Side Handle Instruction Manual 

Contents

- [1 SmallRig LQ-P1367-18 ARRI Locating Side Handle](#)
- [2 Product Usage Instructions](#)
- [3 Installation Instruction](#)
- [4 Service & Warranty](#)
- [5 CONTACT](#)
- [6 FAQ](#)
- [7 Documents / Resources](#)
 - [7.1 References](#)
- [8 Related Posts](#)

SmallRig

SmallRig LQ-P1367-18 ARRI Locating Side Handle

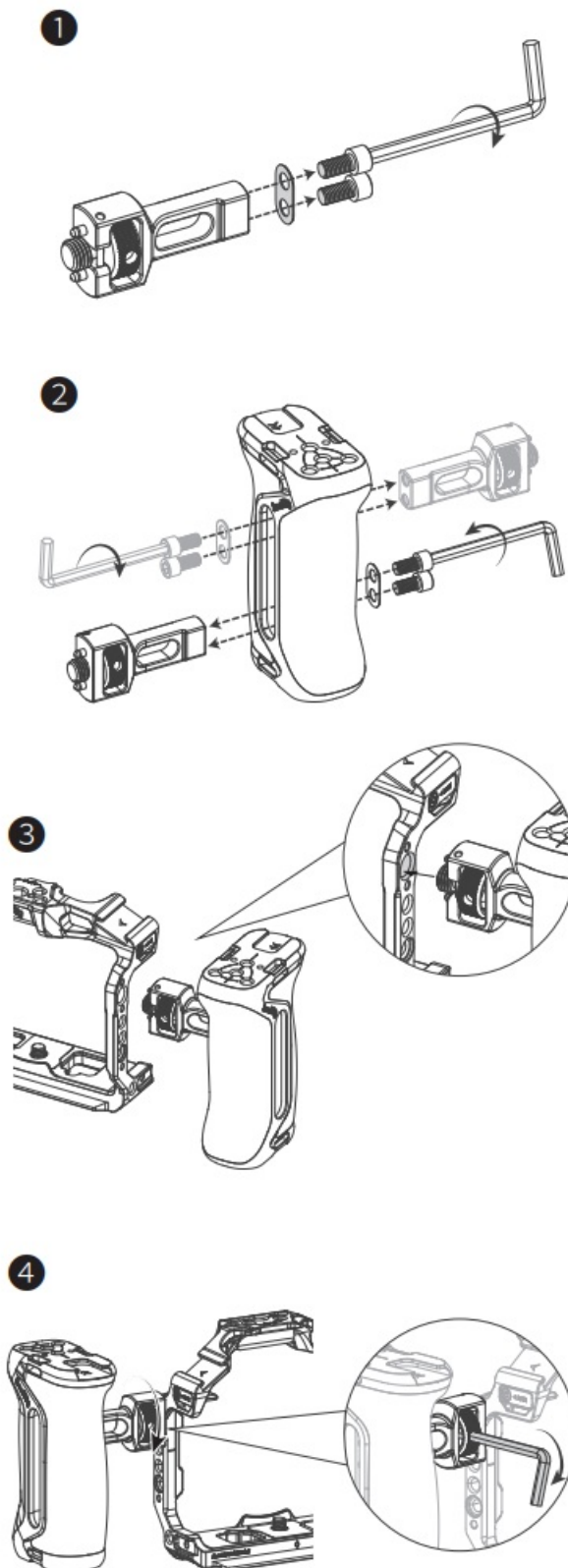


Product Usage Instructions

- Locate the mounting points on your camera or rig where the side handle can be attached.
- Align the ARRI Locating Side Handle with the mounting points.
- Securely fasten the handle using the provided screws or mounting mechanism.
- Once installed, the ARRI Locating Side Handle can be used for stabilizing your camera rig and providing additional grip for easier handling during shooting.
- Regularly check the tightness of the handle to ensure it remains secure during use. Clean the handle with a soft, damp cloth if needed.

Thank you for purchasing SmallRig's product.

Installation Instruction



Service & Warranty

Please keep your original receipt and guarantee card. Be sure the dealer has written on it the date of purchase and the SN of the product. These are required for warranty service.

After-sales Warranty Terms

SmallRig products are entitled to warranty services as of the date of payment.

- Electronic products except V mount battery): 1-year warranty.
- V mount battery: 2-year warranty.
- Non-electronic products: 2-year warranty.

Note: In case of any conflict between our warranty period policy and applicable laws and regulations of the country/region where the products are sold, the latter shall prevail.

This Warranty Does Not Cover

- 1. If users fail to adhere to the “Operating Instruction” or any “Warnings” stated in the user manual, resulting in a quality failure, it falls outside the scope of warranty coverage.
- 2. The product identification or SN label is removed or defaced in any way.
- 3. Product damage caused by problems not attributable to the quality of the products such as improper use of the products.
- 4. Product damage caused by unauthorized modification, disassembly, repair, and other acts.
- 5. Product damage caused by fires, floods, lightning, and other force majeure factors.

Warranty Mode

For the products within the scope of warranty, SmallRig will repair or replace them on the basis of specific failures; the repaired/replaced products/parts are entitled to the remaining part of the original warranty period.

Guarantee Card

ID No.	
Item Name	
Purchase Date	
User Name	
Mobile	
Address	
Receipt	

CONTACT

You’re advised to contact the online customer service personnel of the corresponding shopping platform and submit a repair service application.

- You may also apply for repair service through SmallRig’s service email.
- Service Email: support@smallrig.com

EC

REP

Prolinx GmbH

- Brehmstr.56,40239 Duesseldorf Germany eu@eulinx.eu




- **Prolinx Global LTD**

- 27 Old Gloucester Street London, WC1N3AX, UK eu@eulinx.eu
- Manufacturer: Shenzhen Leqi Innovation Co., Ltd.
- Add: Rooms 103, 501, and 601, Building 5, Fenghe Industrial Park, Nos. 1301-50 Guanguang Road, Longhua District, Shenzhen, Guangdong, China.
- **Consignor: Shenzhen LC Co., Ltd.**
- Add: Rooms 602, Building 5, Fenghe Industrial Park, No. 1301-50 Guanguang Road, Xinlan Community, Guanlan Street, Longhua District, Shenzhen, Guangdong, China.

FAQ

- **Q:** What should I do if the handle becomes loose?
- **A:** Check the mounting screws and ensure they are tightened securely. If the handle continues to loosen, contact customer support for assistance.
- **Q:** Can I use this handle with any camera?
- **A:** The compatibility of the handle may very depending on the camera model. Please refer to the product specifications or contact the manufacturer for compatibility information.

Documents / Resources

	<p>SmallRig LQ-P1367-18 ARRI Locating Side Handle [pdf] Instruction Manual 1725357355478, LQ-P1367-18 ARRI Locating Side Handle, LQ-P1367-18, ARRI Locating Side Handle, Locating Side Handle, Side Handle, Handle</p>
---	--

References

- [User Manual](#)

Manuals+ Privacy Policy

This website is an independent publication and is neither affiliated with nor endorsed by any of the trademark owners. The "Bluetooth®" word mark and logos are registered trademarks owned by Bluetooth SIG, Inc. The "Wi-Fi®" word mark and logos are registered trademarks owned by the Wi-Fi Alliance. Any use of these marks on this website does not imply any affiliation with or endorsement.