



SMAJAYU Signature Pad USB Signature Capture Pads Instructions

[Home](#) » [SMAJAYU](#) » SMAJAYU Signature Pad USB Signature Capture Pads Instructions 

Contents

- [1 SMAJAYU Signature Pad USB Signature Capture Pads](#)
- [2 Operation Instruction](#)
- [3 Toolbar button Introduction](#)
- [4 Signature](#)
- [5 Firmware update](#)
- [6 CONTACT](#)
- [7 Documents / Resources](#)
 - [7.1 References](#)



SMAJAYU Signature Pad USB Signature Capture Pads



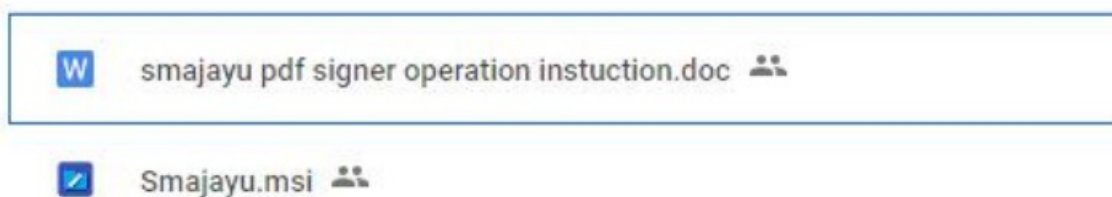
Operation Instruction

Preparation before signing

- SMAJAYU signature pad and PDF signer tool only work with PCs with WIN 7, WIN 8, WIN 10, WIN 11 OS, 32bit & 64bit.
- Not compatible with Apple PC currently.
- There are options for PDF signer, excel signer and Word signer.
- **Signature Pad Operation Video:** https://www.amazon.com/vdp/0c2c9ccd11624880a3c43c6c467ae6b0?ref=dp_vse_ibvc2.

1. **Step1:** Download Smajayu PDF Signer.msi from the Download Link (we keep the latest signer in this link, you can re-download if it is updated):

- <https://www.dropbox.com/scl/fo/8gireb2tn80j73xqrtikk/h?rlkey=fj9ku0ng7zqnhrmcq5wfyga6j&di=0>.



- then double-click to run. Click "Next" -> "Next" -> "Install" -> "Finish" to install.

2. **Step 2:** Connect the Signature pad to your PC by USB port. After Display flash, the firmware version, finally pad will go to sleep mode till draw on signer.

- **Tips:** If the pad is stuck at startup, please re-plug the USB or change a USB port to restart the pad. The

device may restart 1~4 times, please wait for the restart to complete before signing.



Plug PAD USB to PC



Display logo



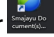
Display version
Version number interface



**Pad will wake up
when draw signing
area on Signer**



3. Step 3:

1. Run Smajayu documents Signer then select pdf signer  as a new user to generate a certificate on PC (important for new users, refer to PDF SIGNER: Toolbar button introduction:
2. "Generate Certificate")

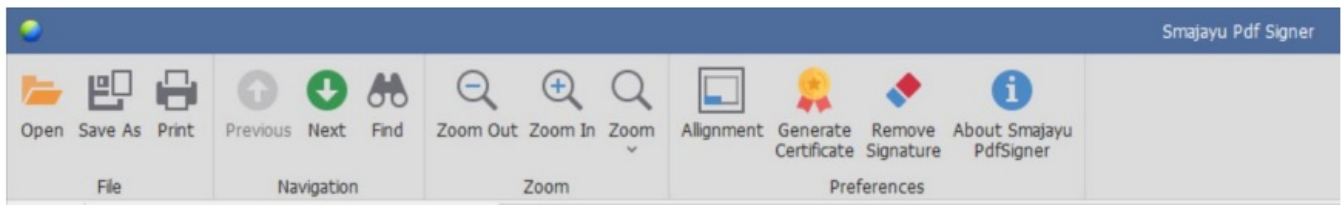


4. Step 4: Open the PDF file that you want to sign.



Toolbar button Introduction

PDF SIGNER Toolbar button introduction:



1. “Alignment”

- If the signature is out of order or cannot be written when signing on the signature pad, alignment is required.
- For details, please refer to “3. Alignment”. (Suggest new user to do Alignment for the pad, it is an important solution to solve problems when writing on the pad)

2. “Generate Certificate”

- Please click the “generate certificate” button.
- Then enter the certificate information, click “save” to generate your certificate if it is first time install Smajayu Documents Signer on the PC.
- This means you can create your certificate for your signature with encryption. Please note the validity period of the certificate. After this time the certificate will not be available, please re-generate a new certificate.



Personal Digital Signature Certificate

First and Last Name

Certificate name (must be set)

Password(Optional)

Confirm Passowrd(Optional)

Validity (In Month)

Set the validity period of the certificate

Company Name(Optional)

Country(Optional)

State/Province(Optional)

Save Options

☒ Save in Smajayu Pdf Signer

☐ Save in Smajayu Pdf Signer and Windows Store Certificate

Save

Cancel

3. “Remove Signature”

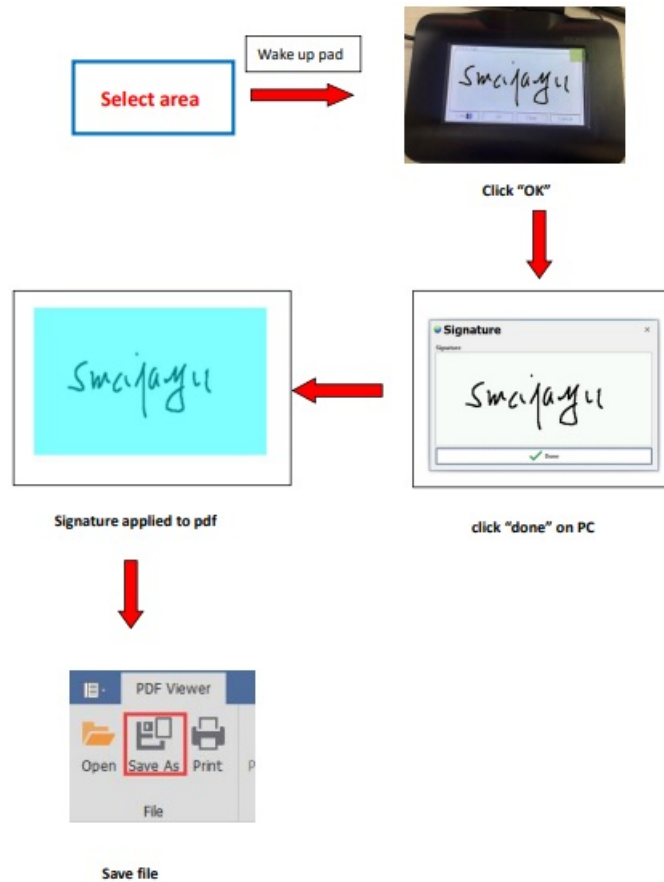
- Clicking the “Remove Signature” button will clear the signature from the document

Signature

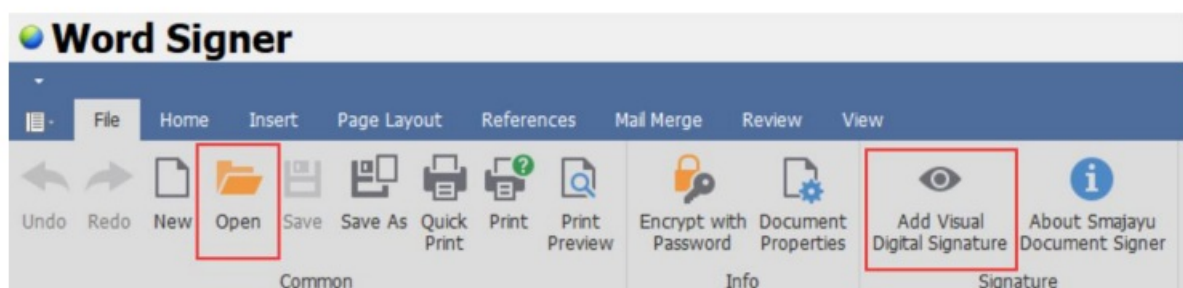
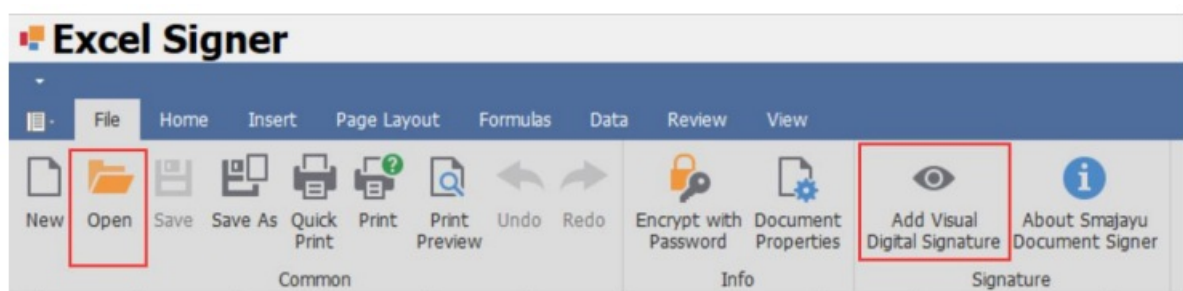
- **Step 1:** Draw a rectangle for signature area on pdf.
- **Step 2:** The signature pad will be woke-up for signing. After writing on pad, click the “OK” button on the pad to submit the signature to the PC.(If can’t writing on pad, please Alignemnt pad first, refer to Item 3.Alignment)

- **Step 3:** Click “Done” to apply the signature to the document.

- **Step 4:** If you want to re-sign, please click remove signature on tool (Remove Signature)
- **Step 5:** Click “Save as” or press “ctrl+s” to save the signed file.



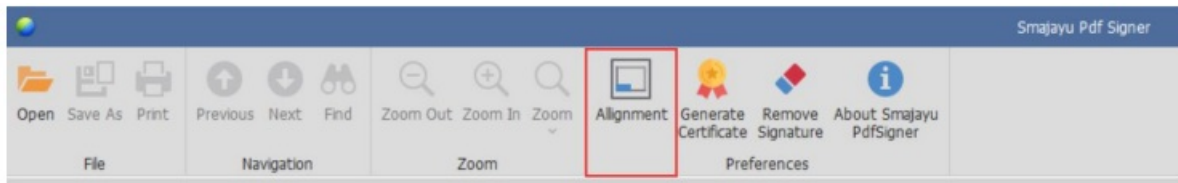
If you want to sign word file or excel file, run the word signer or excel signer. And open the documents you want to sign then click add "Visual digital signature", it will transfer to pdf signer to sign and save as pdf file.




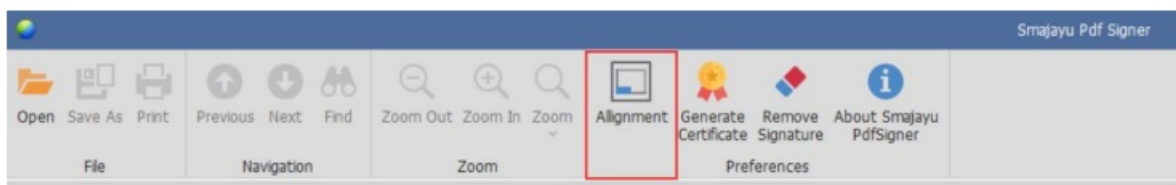
Tips:

1. The signature pad should be connected to PC Before start to draw the signing area.
2. Try not to disconnect the USB during the signing process, otherwise Signer will be stuck. If stuck, stop the application and restart to run the signer.
3. If the sign pen out of control during writing on pad, or when writing on the pad is not in order, please kindly Calibrate the pad following in “3.Alignment”

Alignment



- **Step1:** PAD is connected with PC.
- **Step2:** Run pdf signer
- **Step 3:** Click “Alignment”. The signature pad will enter the Alignment interface, then start tapping the cursor  on screen in order(left-top->right-top->right-down->left-down->center) to calibrate.



click “Alignment”



restart



click the dots on the pad

- **Note:** Need to click the four corners and the centre of the screen in order, all five points must be clicked. If you miss one point, the signature handwriting will still be messy after alignment, then try re-alignment.


Firmware update

If the signature pad does not boot properly, you can try to update the firmware. **See the link for details:** <https://drive.google.com/drive/folders/1qj5lett5n0YxZ3jWzflCK5AW5N=AEfHm?usp=sharing>
You can refer to the documentation or video in the link to update the firmware.

CONTACT

- SMAJAYU(SHENZHEN)CO.,LTD
 - **ADD:** Room 311, F3 Shahe Xili, No2-2 North of Xili, Xili Town, Nanshan District, Shenzhen, China,518055.
 - **EMAIL:** support@smajayu.com; tech@smajayu.com; sales@smajayu.com;
 - **TEL:**+86-755-86596731, +86-13823325452
-

Documents / Resources

	<p>SMAJAYU Signature Pad USB Signature Capture Pads [pdf] Instructions Signature Pad USB Signature Capture Pads, Signature Pad, USB Signature Capture Pads, Signature Capture Pads, Capture Pads</p>
---	--

References

- [User Manual](#)