



# SM Tek Group GS10 Boost Plus Wireless Charger User Manual

[Home](#) » [SM Tek Group](#) » SM Tek Group GS10 Boost Plus Wireless Charger User Manual 

## Contents

- [1 SM Tek Group GS10 Boost Plus Wireless Charger](#)
- [2 INTRODUCTION](#)
- [3 PACKAGE CONTENTS](#)
- [4 HOWTOUSE](#)
- [5 PRODUCT OVERVIEW](#)
- [6 SPECIFICATIONS & FEATURES](#)
- [7 CARE AND SAFETY](#)
  - [7.1 BATTERY DISPOSAL](#)
- [8 Documents / Resources](#)
- [9 Related Posts](#)



**SM Tek Group GS10 Boost Plus Wireless Charger**



## INTRODUCTION

Talk about futuristic technology! This wireless charging pad will eliminate chunky wires in your bag, on your table or at your desk. Just plug the pad in, and slap your phone on top! Immediately your phone should begin to charge and its just that easy!

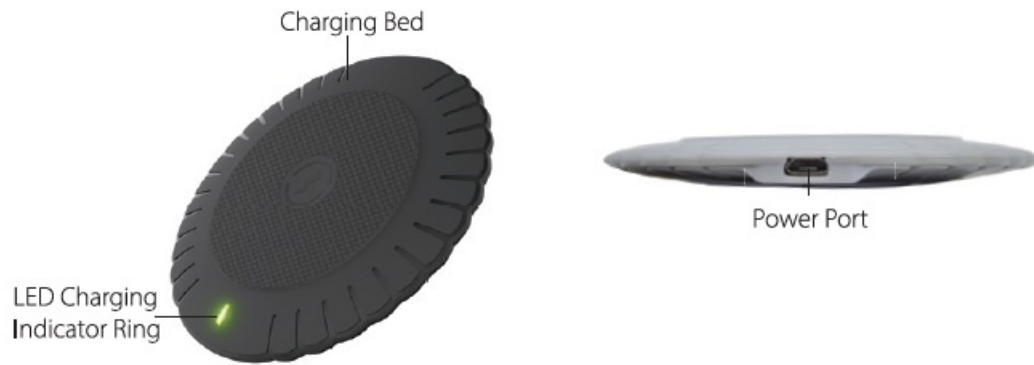
## PACKAGE CONTENTS

- 1x Charging Pad
- 1x USB Cable

## HOWTOUSE

1. Unbox everything and make sure you have all contents
2. Next you're going to plug the wire into the port on the pad
3. After that all you need to do is put your phone on top
4. Make sure the screen is face up
5. Red Light will appear while it is plugged in and once a phone is charging the light will turn Blue
6. Enjoy!

## PRODUCT OVERVIEW



## SPECIFICATIONS & FEATURES

- Charger is approx 3.75in diameter and .35in thick
- Input: DC9V/5V
- Output: 10W/5W
- Charge Distance 4-10mm
- Compatible with QI Devices

## CARE AND SAFETY

- Do not use this unit for anything other than its intended use.
- Keep the unit away from heat source, direct sunlight, humidity, water or any other liquid.
- Do not expose the device to extremely high or low temperatures, as it may damage the battery.
- Do not operate the unit if it has been wet or moist to prevent against electric shock and/or injury to yourself and damage to the unit.
- Do not use the unit if it has been dropped or damaged in any way.
- Repairs to electrical equipment should only be performed by a qualified electrician. Improper repairs may place the user at serious risk.
- Keep the unit out of reach of children.
- This unit is not a toy.

## BATTERY DISPOSAL

This product contains a lithium polymer battery. Lithium polymer batteries are environmentally safe when fully discharged. Please refer to your local and state laws for battery disposal procedures.

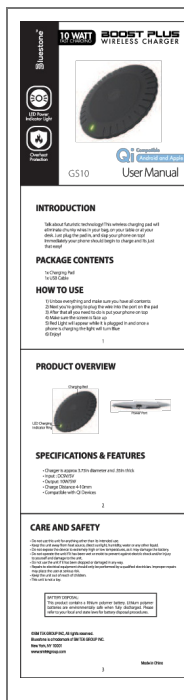
SM TEK GROUP INC, All rights reserved.

Bluestone is a trademark of SM TEK GROUP INC.

New York, NY 10001

[www.smtelgroup.com](http://www.smtelgroup.com)

## Documents / Resources



## [SM Tek Group GS10 Boost Plus Wireless Charger \[pdf\] User Manual](#)

### GS10 Boost Plus Wireless Charger, GS10, Boost Plus Wireless Charger